



Kodak

The Digitized Kodak Catalog Project (1886 - 1941): A Very Brief History

Most camera collectors at some point in their collecting careers pass through a Kodak phase - some never come out of it. And if there ever was one name that came to be associated with both cameras and collecting, it was Kodak.

George Eastman received his first patent (for coating dry plates) and bought his first manufacturing facility in 1880, and in 1881 he started the Eastman Dry Plate Company. In 1886 he received a patent for the near-mythical Eastman Detective Camera, but it wasn't until 1888 that the first camera bearing the name "Kodak" was introduced.

One of the nice things about collecting Kodak is that the product line is pretty well known, and because the company produced annual catalogs for many years, collectors can be reasonably sure of what they're looking at, when it was made, the variations and so on - presuming that they have access to either the appropriate catalog, or a number of the many books which document Kodak, each to some greater or lesser extent.

But what would be really nice would be to have a complete set of Kodak catalogs in an easily accessible form and readily available. And since the advent of portable computing devices (PC, Macintosh, etc.) that's been possible - except for the difficulty of assembling a complete set of Kodak catalogs in one spot and then scanning them and making the results available.

The idea of digitizing a complete set of Kodak catalogs has kicked around the collecting community for many years. It's been proposed on a number of online forums, during meetings of various photohistory groups, and for years there have been many incomplete "Kodak CDs" on eBay but at best, they only contained a few catalogs - whatever the owner had available. But assembling a complete set of catalogs, then scanning and processing perhaps 3,000 to 4,000 pages, was a daunting task - if not completely overwhelming - and nothing ever came of it.

Until now.

In early 2010, the idea came up again, but this time we - "we" as in "the collecting community" - were lucky. A number of collectors were willing to loan their catalogs to this project and a couple of insane - wait, let's call them "dedicated" - dedicated enthusiasts - neither of whom collected Kodak, but both of whom enjoyed the challenge of such a project - were willing to put in the time and effort to scan and pull together the entire set of catalogs into a full-blown Kodak Catalog Digital Library.

Our initial objective was to include just the annual amateur catalogs, but it turns out that many cameras only appear in certain professional and specialty catalogs. We included as many of those as we could obtain so that almost every Kodak camera made in the US, Canada and Europe, would be documented - at least up to about 1941. After that, it becomes much more difficult as Kodak stopped producing annual catalogs as their product line became increasingly more diversified.

However, even with the additional "non-amateur" catalogs, we weren't completely successful in illustrating "every" camera Kodak ever made. There are an elusive few that might appear in specialty catalogs that we simply couldn't track down. If you can't find one of those odd cameras, that's no doubt why. We may do a revision at some point in the future if someone is willing to loan us a catalog that includes a camera that isn't already recorded.

In this project, a total of 67 catalogs were used from 1886 through 1941 including a number of professional and dealer catalogs, and in some years, two or even three different catalogs to cover all the bases. With the cooperation of a number of dedicated collectors, we were able to pull together all those catalogs and in June 2010, the project started in earnest.

By November 2010, we had scanned everything we needed and eventually all 67 catalogs were then reassembled as image folders and converted to the universally accepted PDF format and finally, converted into individually searchable PDFs which could then be searched globally as a collection.

For those of you interested in the statistics: about 200 hours of scanning time (we never want to hear that sound again), 67 catalogs and 3,908 page scans - which generated 7,917 original and processed images - and 11.4 GB of disk space. Additionally, another 100+ hours of technical development time was needed to convert the digital catalogues into a fully searchable "knowledgebase" that could be launched from most any standard web browser.

The overwhelming number of catalogs was loaned to us by that most remarkable of Kodak collectors, Charlie Kamerman of Eagle Creek, Oregon. Without Charlie, it's very doubtful that this project could even have been attempted.

But as it turned out, even Charlie didn't have all the publications that were needed, but he was able to track down the five that he lacked and was able to secure either a copy or high resolution images that we could work with. And so, our thanks to the contributors of the catalogs and scans that we used:

Charlie Kamerman for the vast majority of catalogs used and all his help,
Steve Shoet for loaning a variety of test catalogs,
Ryerson University (Toronto) for the 1886 Eastman Catalog
George Layne for the 1890 New Kodaks Catalog,
Mike Kessler for the 1891 Dealer Display Catalog,
Ralph London for the 1893 UK Catalog,
Michael Pritchard for the 1897 UK Catalog.

The digital side of the project - also known as "all of the work" - was done by Rob Niederman of Medina, Minnesota, and Milan Zahorcak of Tualatin, Oregon. Remarkably we're still friends and in a few years, we'll probably be able to talk about this project rationally.

And there you have it, a more-or-less done deal. We're fairly sure that it isn't quite perfect, and expect there will be some carping about something or other; but all-in-all, we believe this to be a pretty good product and can now move on to something else.

Our thanks to all of those involved.

Rob Niederman
Milan Zahorcak

Fall, 2011

Harde Louise Miller $\frac{160}{179}$

A Catalogue

OF

KODAKS

AND

Kodak Supplies

1903

EASTMAN KODAK CO.,

Rochester, N. Y., U. S. A.

ISSUED AS AN ADVERTISEMENT
BY THE KODAK PRESS, FROM
ROCHESTER, THE HOME OF THE KODAK

Progress.

The Dark-Room is abolished.

Each year during the past two decades has marked an advance in the simplifying of photography. During some of these years the improvements have, perhaps, been of minor importance—in others the progress has been epoch-making. Those years which brought forth improvements that, in a measure, did away with the necessity for a dark-room, were the years which marked the greatest increase in interest in amateur photography. It was the Kodak, the daylight loading Film Cartridge, and the Daylight Development Papers, which, up to the year just closed, did most to free the amateur from the inconveniences and discomforts of the dark-room. The years in which they were introduced showed a decided advance in photographic progress. Whatever helped the amateur to work in broad daylight, and released him from the stuffy dark-room, increased his interest in the art, reduced the number of his mistakes and helped him to better results. But the dark-room still held full sway in one particular—it was an essential in development; until deposed by the advent of the Kodak Developing Machine.

It was in August last that this machine was placed upon the market. Already there are thousands in successful operation. The introduction of the machine seemingly required a revolution in all the theories of development. It meant that the operator was to work by the watch, instead of by frequent examinations of his negatives. We were ourselves doubtful at first, and did not offer the machines to the public until exhaustive experiment had removed every atom of our skepticism.

It was for its convenience, and with the idea that the machine would give the novice fully as good results as the old methods, that we began our preparations for its manufacture. Before it was fairly ready for introduction our own continued experiments had proven that, even in experienced hands, it would give far better results than the old method, and the experience of our customers has fully confirmed our opinion.

Thus has the Kodak system been completed. Step by step amateur photography has been made easier, until now our old phrase, *You press the button, we do the rest*, has been changed to read:

*You press the button,
then do the rest.*

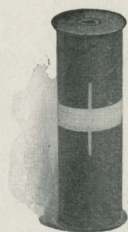
EASTMAN KODAK CO.

Rochester, N. Y.

THE KODAK SYSTEM

UPON the Kodak Film Cartridge is based the success of the Kodak system. It enables the amateur to load and unload his instrument and finish his negatives—all without the use of a dark-room. He may load for two, four, six or twelve exposures, as desired, and, as the cartridges weigh only two or three ounces each, almost any quantity of exposures may be carried without inconvenience.

A wooden spool with a flange on each end, between which flanges is wound a long strip of black paper, is the simple principle of the Film Cartridge. Attached to the inner side of the black paper is a strip of film—the film strip, however, is several inches shorter than the paper strip, and when all is wound on the spool no light can touch the film. To load the Kodak we insert this cartridge (spooled paper and film) in a recess in the camera, and by breaking a gummed sticker we free one end of the black paper. A pull on the paper revolves the spool upon its axis and the paper is drawn across the rollers at back of camera and threaded into another spool, called the winding reel. The film is still hidden beneath several thicknesses of the heavy black paper, and no light has touched it. We now close the Kodak and turn the winding key until the figure 1 (which is in white on the black paper) appears before the red window in the

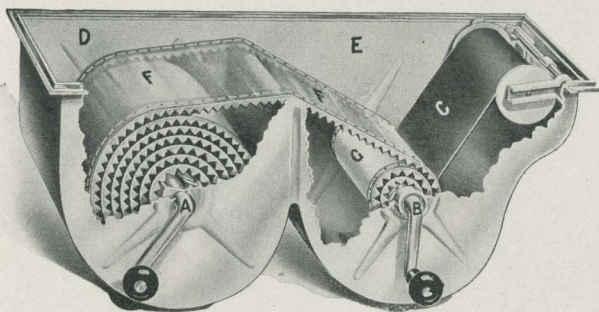


back of camera. This means that the extra thicknesses of black paper have been wound onto the reel and that the film is in position for the picture-taking to begin.



After the exposure has been made, two or three more turns of the key bring figure 2 into view and we are ready for the next exposure.

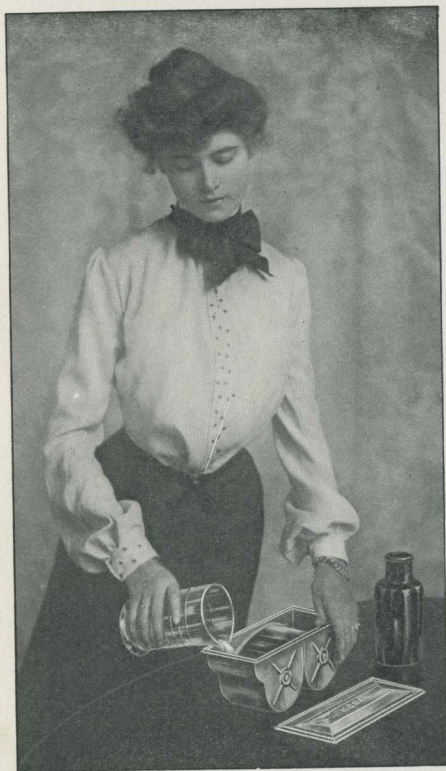
When all the exposures on the roll have been made, the key is given a dozen extra turns, thus again giving several extra wrappings of black paper around the film. The Kodak is opened; the end of the black paper is fastened down with a gummed sticker provided for the purpose, and the exposed cartridge is removed *in daylight* without danger of injury. It is all very simple and easy—easier to do when one has the Kodak before him, than to read about.



Kodak Developing Machine.

The film may now be developed in the old way, in the dark-room, or by the improved method, in the Kodak Developing Machine. In the latter case the cartridge is inserted in the machine so that the black paper will lead from the top, as shown in cut, the transparent apron (F-F) having first been wound onto Arbor "A". The gummed sticker, which holds down the end of black paper, is then broken, the paper pulled out and the end attached to Arbor "B" by slipping under the wire

guard. Arbor "B" is now turned to the right until the word "Stop" appears on top of cartridge. The developer is poured into compartment "E"; the end of Apron (F-F) is hooked onto Arbor "B", and the



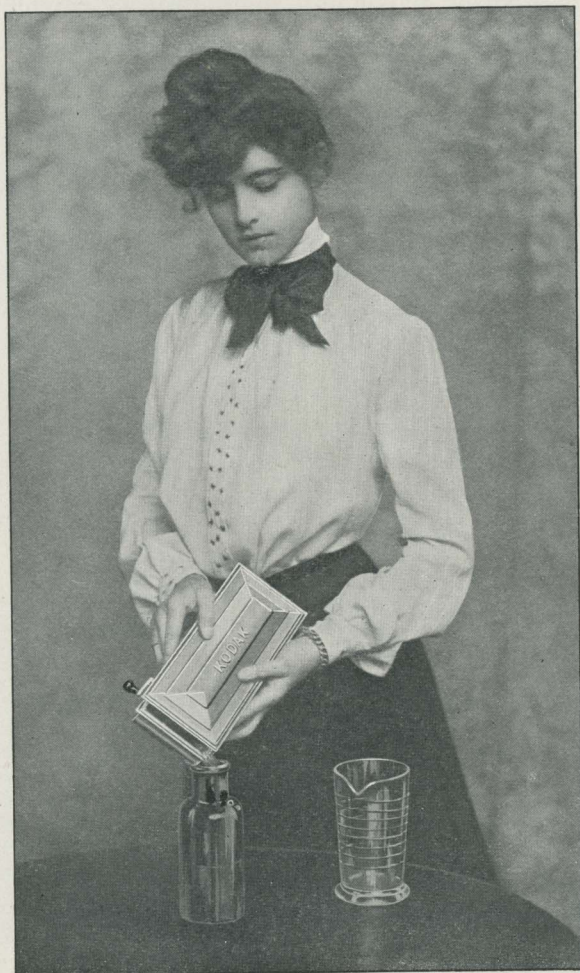
The Developer is Poured In.

top put on machine. The operator now turns handle to the right, slowly and evenly, until the time of development—about four minutes—has expired. The film (G) winds up inside of apron, but with the face not touching it, thus allowing free action of the developer. As the handle turns freely and easily, this operation is not at all wearisome.

The cover is then removed from the machine, the developer poured off, the fixing solution poured in, the cover replaced, and the handle again turned for about five minutes, when the fixing will be complete. After fixing, the cover is again removed, the fixing solution poured off, and, after rinsing in two waters, the film is removed

then do the rest.

9



The Developer is Poured Off.

You press the button—

from machine by taking hold of either the apron or the end of black paper and pulling out of machine, the film being taken hold of when it appears and pulled free from the black paper.



It Gives Better Results than the Old Method.

Nothing now remains to be done, except to wash the film to free it from Hypo (fixing solution); wipe it

with a soft cloth and pin it up to dry. As soon as dry, the negatives are cut apart and are ready for the print-making to begin.

The machine may be used again immediately. Simply rinse well and wind the apron back onto "Arbor A". All is now ready for the next roll of exposures.

From a physical standpoint the machine gives better results than can be obtained by hand, because it does away with the possibility of foreign substances in the developer settling on the negative and making spots; it does away with the possibility of defacing the negative with finger-marks, and it prevents the corners of one negative from scratching the face of another. Chemically, the advantages are boundless. In abolishing the dark-room it also abolishes the dark-room lamp. Every experienced photographer knows that in cases of prolonged development the fog from this lamp often becomes serious. The beginner is especially prone to fogging his negatives by examining them too close to the ruby light. He is unable, perhaps, to judge just how far development has proceeded, and in his anxiety to stop at precisely the right point, he holds them too frequently in front of the lamp and too close to it. He not only strains his eyes and his nerves, but, alas, he often spoils what would, but for his anxiety, have proven a good negative. In the Developing Machine, the negative being in absolute darkness, there is nothing to fog it.

In the Kodak Developing Machine both the film and the developer are in constant motion—the result is quick action and a brilliant snappiness in the negative that cannot be equaled under the old conditions.

CORRECT IN THEORY AND IN PRACTICE.

Though but a few months in the hands of the public, the uniformly successful results obtained by our customers in the use of the Kodak Developing Machine have demonstrated not only its convenience, but the superiority of the results which can be obtained by its use.

When we first experimented with it, we ourselves doubted its ability to successfully develop a roll of film which contained both snap-shots and time exposures. But it worked—even under the most adverse circumstances. The more we tried it, the more exhaustive and extended our tests became, the greater our confidence in it became. It routed our skepticism. Knowing that its failure would be an enormous injury to our film and Kodak business, we did not place it upon the market until we had made doubly sure that it would do its work well, even in the hands of the novice. We have not been disappointed.

And, after all, it should not be considered so revolutionary in principle. The most careful thinkers and experimenters prove that the time method is the only proper method for development. They demonstrate, indeed, that the operator has little control of a negative after all the tones have appeared. In commenting on this feature of development, Mr. Alfred Watkins says: "Probably nine-tenths of the rollable films developed in the last year or two have been developed without cutting up the roll at all, perhaps, in most cases, on account of ease and simplicity, without knowledge that it was the theoretically correct proceeding. * * * The influence of time is quite sufficient for all control required."

Messrs. Hurter and Driffield have proven that under and over exposures should receive the same time of development, in order to receive the same contrast: "The over-exposed negative utilizes the upper tones of the series, and is denser throughout. The under-exposed negative utilizes the lower tones of the series, and is thin throughout; but, except where they fringe on the extreme tones which are under or over the range of the plate, both negatives give prints of much the same detail and steepness of gradation."

This comment is quite in line with that of Mr. Charles I. Berg, who wrote regarding the Kodak Developing Machine: "What matters it if one negative be carried a little further than another? This can readily be taken care of in the printing."

Mr. Rudolf Eickemeyer, Jr., one of America's most progressive photographers, viewed the machine from much the same standpoint, his comment being: "The new device has reduced the whole question of development to one of a simple handling of material. The time and developer being fixed, the amateur can, in development, bring out all that the exposure is capable of yielding."

Miss Zaida Ben Yusuf, in her comment on the machine, practically concedes that the old methods were wrong—that the traditions of the dark-room had outlived their usefulness: "More traditions shattered! The machine is really wonderful. I could not believe that such uniform results could be obtained after such a wide difference in timing exposures on one strip of film, until I saw it demonstrated."

Alfred Stieglitz, Col. Theo. C. Marceau, J. Craig

Annan, Edward W. Newcomb, F. Dundas Todd and Francois Voitier are among other world-famous photographic workers who have given endorsement to the machine, and from amateurs who have given it practical tests we have enough testimonials to fill this little book.

The Kodak Developing Machine is the master stroke in the completion of the Kodak system. It makes photography as an open book.

AFTER THE NEGATIVE.

From loading the camera to finishing the negative, then, the dark-room is not only done away with, but the results obtained are better than by the old processes. The printing? That may be done by any one of half-a-dozen processes, which are simple in the extreme—some using daylight for printing, some using either daylight or artificial light, and none requiring a dark-room for any part of the work.

Now, indeed, the amateur can get pleasure from every step, and enjoy to the full the Witchery of Kodakery.

THE KODAKS THEMSELVES.

ALL Kodaks load in daylight with light-proof film cartridges. And one may load for a few exposures at home, or with a dozen for a day's outing—to say nothing of the extra cartridges that may be carried in the pocket without inconvenience. The $3\frac{1}{2} \times 3\frac{1}{2}$, $3\frac{1}{4} \times 4\frac{1}{4}$, 4×5 and 5×7 Kodak cartridges are made for two, four, six or twelve exposures; the smaller cartridges are made for six exposures and twelve exposures only.

This wide variety in the capacity of the cartridges enables one to load for approximately the number of exposures that he expects to make, thereby using his film economically and conveniently.

And the same simplicity that characterizes the cartridge system prevails in the operation of the Kodak. It is this simplicity, combined with the use of the best materials and the most careful workmanship, that has made "Kodak" a synonym for all that is best in camera construction.

In the matter of lenses and shutters the utmost care is used. Our shutters are simple in principle, are accurately made and carefully assembled under the most rigid inspection. All lenses used in our instruments are chosen with direct reference to the work that is expected of them. Not only do we exercise the utmost care in selecting for each camera the proper type of lens, a lens of the proper focal length, and a speed that will give the

best results with the shutter to be used, but each lens is given individual inspection, and, when fitted in the camera, is focused on the ground glass *and the results examined under the microscope by our own experts.* Any lens that fails to come up to our high standard is unhesitatingly discarded.

It is, no doubt, to this determination to supply our customers with apparatus of the very highest grade that the continued Kodak success is due. It is not to our advantage to build cameras at the lowest possible cost limit in order to make a large immediate profit, but to build them so well that our customers will receive the highest satisfaction in their use and thus become steady consumers of our other products. Our customers' interests are our own.

Though all use film cartridges and retain their simplicity, there are several styles of Kodaks which may be used with glass plates when desired. All Kodaks (except the Panoram) are adapted to both time exposures and snap-shots, to flash-light work and to portraiture, even the smallest instruments being adapted to the making of bust portraits by the simple means of the Kodak Portrait Attachment. Indeed, though free from confusing technicalities, the Kodak covers the whole field. It appeals to the novice by its simplicity, and to the advanced amateur by reason of its adaptability to all the conditions which he is likely to encounter in the pursuit of his photographic pleasures.

FILM QUALITY.

PROBABLY not one person in ten thousand realizes the difficulties encountered in the manufacture of sensitized photographic goods. The slightest variation in the purity of one's chemicals, in the temperature, in the moisture in the air, has its effect on the quality of a substance which is so delicate that its whole nature can be changed by exposure to light for the hundredth part of a second.

Only the greatest experience, the most perfect facilities and the most expert chemists can be employed if one is to turn out a film of the highest quality. We have all these, and it was a dozen years ago that we passed through the experimental stage in the manufacture of transparent film. Year by year the quality of our product improved, until Eastman's Transparent Films became equal in quality to glass plates. No manufacturer of such a delicate substance can hope to reach perfection except by this slow process. He must necessarily learn by his mistakes. "As good as plates" has not, however, been the mark at which we aimed. To shoot higher and make a film that was "better than plates"—such was our ambition. And we have succeeded.

Under the conditions which the amateur ordinarily encounters, film will give better results than glass plates. The plate manufacturer prepares his emulsion with direct reference to the soft and perfectly regulated light

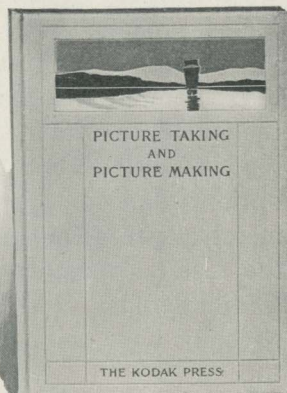
in the professional studio. The amateur is to him a secondary consideration. With us, so far as film is concerned, the conditions are reversed. We prepare film emulsion to give the best possible results under the harsh conditions of lighting which the amateur encounters. Film has the additional advantage of its non-halation properties.

Nor is this all. Our film allows the utmost latitude in exposure. "Latitude" is, perhaps, a term which, to the novice, needs some explanation in its application to photography. Suppose the correct exposure in a given case to be, say, three minutes. Suppose, further, that the amateur gives an exposure of one minute, and on another section of film (all other conditions remaining the same) an exposure of six minutes, and upon development finds that both his negatives will yield good prints. It would then be said that the film had great latitude; *i. e.*, it would give good results under a wide variation of timing. It is this quality that makes film particularly valuable to the beginner, because it lessens to so great a degree the chances of his spoiling his negatives by error in timing the exposures.

For all, except studio use, Eastman's Transparent Film is better than plates, which is another reason for the continued increase in the Kodak popularity.

HOW WE HELP.

NOT being mere manufacturers of cameras, we do not lose interest in a customer the moment we have sold him a Kodak. It is to our interest to make him an enthusiastic devotee of photography, and we, therefore, help him in every way to get good pictures. We furnish the most explicit instructions with each instrument—instructions that are fully illustrated, and carefully written in terms that the novice can understand. And for his further benefit we offer the services of the Kodak Correspondence School of Photography. There's a nominal charge of one dollar for this service, intended to partially cover the cost of text books and postage. The text books include a cloth-bound copy of "Picture Taking and Picture Making" and seven supplementary booklets, covering: Exposure and Development, Printing-Out Papers, Development Papers, Out-Door Photography, Portraiture and Interiors, Platinum Printing, Bromide Enlarging and Lantern Slide Making. The greatest value in the course, however, lies in the individual criticism given to the work by competent instructors. Film negatives



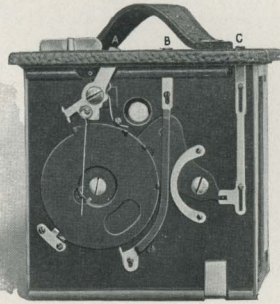
and unmounted prints can be so readily sent by mail that the instructors are able to come into the closest touch with their pupils, and point out their errors; are able to help them over the hard places, and tell them where and why they fail.

It is only because it is worth while for us to increase the interest in photography, that we can afford to offer the advantages of this course for so trifling a sum. One of our pupils writes: "Volumes of reading would not so well help to overcome some fault as to have my good teacher point his finger right at the spot and say: 'There, that's the trouble.' How you can afford it all is a mystery to me; a mystery that, perhaps, I should not be too curious to solve, so long as I may have the benefit."

AT YOUR OPTION.

IN the pages that follow, the Kodak line is described in detail. We only ask that in scanning them you bear in mind that no matter whether you decide upon the purchase of No. 1 Brownie, or a No. 5 Cartridge Kodak with the most elaborate equipment, it is at your option to accomplish every step of the work, or to merely "press the button" and let someone else "do the rest." In either case you can readily master the simple details. The Kodak and the Kodak Developing Machine have made every step easy.

EASTMAN KODAK CO.



Eastman's Improved Rotary Shutter.

THE simplicity and absolute reliability of our Rotary Shutter was one of the features which gave to the original Bulls-Eye, and to the Pocket Kodak, their immense popularity. It is always set. Snap-shots are made by simply pushing the lever "A" alternately to the right or left, thus revolving the metal disc and making the exposure as the opening in disc passes the lens. If, by chance, the lever be pushed in the wrong direction it will simply remain unmoved, and no click will be heard.

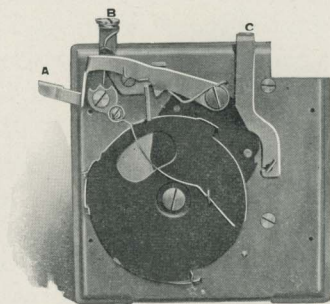
For time exposures the Kodaker simply pulls up the slide "B," and then pushes the lever "A" in one direction to open, and in the opposite direction to close the shutter. It will be seen that when the slide "B" is pulled out the shutter strikes as it passes the lens, stopping half way across, with the opening over the lens.

The lever "C" controls the stops, of which there are three.

Made with special machinery, by skilled mechanics, this simple mechanism makes an ideal shutter for the hand camera.

The Eastman Rotary Shutter is used on the No. 2 and No. 4 Bulls-Eye and the No. 2 Flexo Kodaks.

This shutter is also used on the Brownie Cameras; the No. 1 Brownies, however, have but one stop.



Eastman Automatic Shutter.

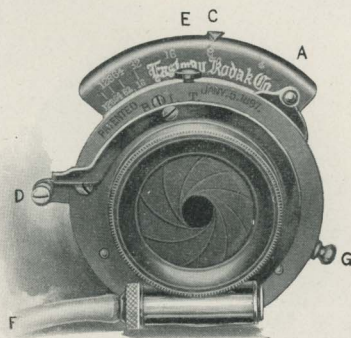
TO make a snap-shot: press down lever "B." To make a time exposure: press down lever "A" once to open, and again to close the shutter. That's all there is to operating the Eastman Automatic Shutter. It is always set.

The lever "C" operates the stops, of which there are three.

Not only are these shutters made with the finest special machinery, and with the utmost care, but they are given a thorough and practical test by experienced inspectors. In fact, all of our shutters are subjected to the most rigid inspection before shipment, as a guarantee that every part is perfect, and that no error of adjustment has been made in assembling.

The Eastman Automatic Shutter has been used for some years on the Folding Pocket Kodak series, being employed exclusively on the fixed focus cameras of that type, and the extraordinary popularity of these instruments is due, in no small degree, to the simplicity and certainty of this shutter.

The Eastman Automatic Shutter is used on the Folding Pocket Kodaks No. 0, No. 1, No. 1A, No. 2 and No. 3.



Eastman Triple Action Shutter.

THIS is a shutter with a wide range of action, built with the accuracy of a watch, yet simple, strong, reliable and far more compact than other shutters of similar capabilities.

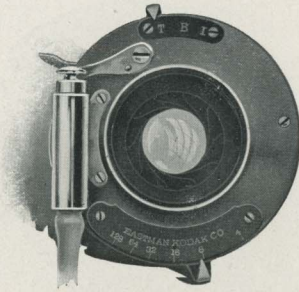
For snap-shots: place lever "E" at point "I," and set shutter by turning lever "A" to left to limit of motion. Expose by pressing bulb attached to tube "F," or by touching release "D." There are three speeds for instantaneous exposures, which are regulated by moving the lever "G."

For time exposures: place lever "E" at point "T," and set shutter by turning lever "A" to left to limit of motion. Press bulb (or release "D") once to open and again to close shutter.

For short time exposure: place lever "E" at "B," and set shutter by moving "A" to left to limit of motion. Press bulb (or finger release "D") to open shutter and release it to close shutter. The shutter remains open as long as the bulb remains under pressure, and closes the instant it is released.

The stops are operated by moving lever "C" and range from U. S. 4 to U. S. 128.

As furnished with the No. 3, 4 and 5 Cartridge Kodaks, and No. 4 Bullet Special (Model C) Kodaks, this shutter is fitted with pneumatic release operated by bulb. With the No. 2 and No. 4 Bulls-Eye Special and the No. 2 Bullet Special Kodaks it is operated by levers, those for setting the shutter and making the exposure *working from the outside of camera*, so that the front does not have to be opened except to change the adjustment.



F. P. K. Automatic Shutter.

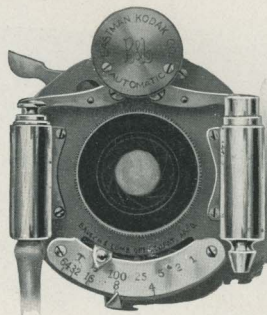
THIS is a wonderfully simple and convenient little shutter of the highest grade, and is perfectly adapted to use on the Folding Pocket Kodak No. 3A, for which it is especially made.

It is always set; a single pressure of the bulb or finger release giving instantaneous exposures of $\frac{1}{30}$ of a second. It has, also, the "bulb" exposure, by which the shutter opens when the bulb (or finger release) is pressed, and closes when it is released. Time exposures are made by pressing the bulb (or finger release) once to open and again to close the shutter.

It has iris diaphragm stops, with graduated scale for Nos. 4, 8, 16, 32, 64 and 128.

It is neat in appearance, perfect in action, and admirably adapted to use on the superb little instrument with which it is listed.

In the equipment of a camera an important point is to not only have each part excellent in itself, but have it work in harmony with every other part. There is no object in having a lens of great speed unless the shutter used will permit the utilizing of that speed. The F. P. K. Automatic shutter is in perfect harmony with the Rapid Rectilinear lenses with which it is equipped.

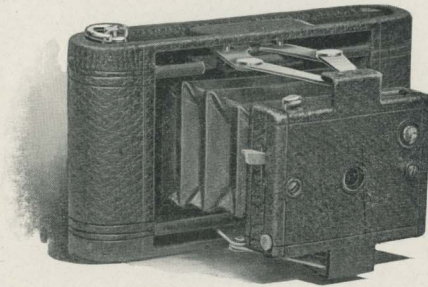


B. & L. Automatic Shutter.

THIS is a shutter of the highest grade, and is one which we have selected, after the most careful tests, for use where special lens and shutter equipments are desired. It will be furnished (extra) with the Nos. 3, 4 and 5 Cartridge Kodaks, or with the No. 3 or No. 3A Folding Pocket Kodaks, and is included also in the regular equipment of the No. 3 Folding Pocket Kodak de Luxe at no extra charge.

The B. & L. Automatic Shutter is always set, and is operated by a pressure of the bulb or by touching the trigger. It gives automatic exposures from $\frac{1}{1000}$ of a second to one second; it has the "bulb" exposure, by which the shutter opens when the bulb is pressed and closes when the pressure is released, and has the time action, one pressure of the bulb opening and another pressure closing the shutter. It is fitted with iris diaphragm stops, with scale for openings Nos. 3, 4, 8, 16, 32, 64 and 128.

This shutter is especially recommended for use with the Bausch & Lomb *Plastigmat* lenses and the Goerz *Anastigmat*, listed on page 52, as it permits working them with the full opening and with a variety of automatic exposure adapted to all conditions of light.



No. 0 Folding Pocket Kodak.

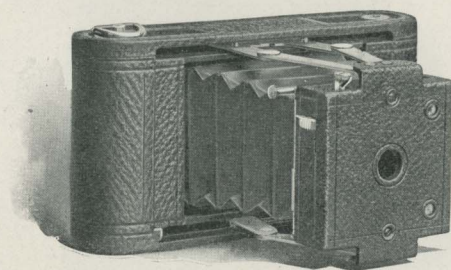
THE smallest of the Pocket Kodak series, which means the most compact of all cameras, this little instrument particularly appeals to those who want a camera to carry on their outings, which shall make excellent negatives, yet in no wise be in the way. It will slip into an inside pocket as readily as a wallet; is always ready when wanted. Can be carried without inconvenience when one is engaged in the most strenuous of out-door sports.

It is but $3\frac{1}{8}$ inches wide, $1\frac{3}{8}$ inches thick and $5\frac{5}{8}$ inches long, and weighs but 12 ounces, yet makes pictures $1\frac{5}{8} \times 2\frac{1}{2}$ inches, or more than a third larger than the original Pocket Kodak. It has a meniscus lens of 3 inch fixed focus and perfect covering power, has the Eastman Automatic Shutter and set of three stops described on page 22, is fitted with brilliant finder and loads in daylight for six or for twelve exposures.

Made of aluminum, covered with fine black seal grain leather and has nicked fittings. As dainty as a lady's purse.

THE PRICE.—

No. 0 Folding Pocket Kodak, for pictures $1\frac{5}{8} \times 2\frac{1}{2}$, not loaded,	\$6.00
Transparent Film Cartridge, 12 exposures, $1\frac{5}{8} \times 2\frac{1}{2}$,25
Do., 6 exposures,15
Kodak Portrait Attachment,50
Black Sole Leather Carrying Case, with shoulder strap,	1.00



No. 1 Folding Pocket Kodak.

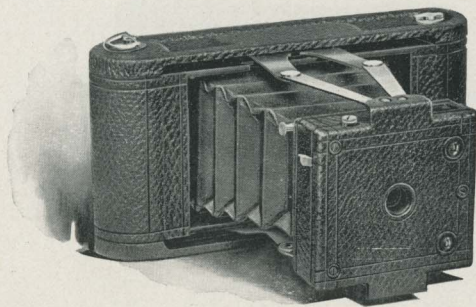
NO camera was ever more enthusiastically received than the No. 1 Folding Pocket Kodak, which was the original of our Folding Pocket series, and it has continued long in its popularity. Very small and compact, yet yielding pictures of a satisfactory size and of wonderful quality, it fully deserves the success which has attended it.

The lenses used in these instruments are meniscus achromatic, have a fixed focus of 4 inches and are most carefully tested by our own inspector. These cameras have the Eastman Automatic shutters with a set of three stops, described on page 22, have two brilliant finders, one for vertical and one for horizontal exposures, and have a capacity for 12 exposures, $2\frac{1}{4} \times 3\frac{1}{4}$, yet measure only $1\frac{5}{8} \times 3\frac{1}{2} \times 6\frac{3}{4}$ inches, and weigh but 15 ounces.

Made of aluminum, covered with fine black seal grain leather, and have nicked fittings.

THE PRICE.

No. 1 Folding Pocket Kodak, for pictures $2\frac{1}{4} \times 3\frac{1}{4}$ inches with achromatic lens, not loaded,	\$10.00
Transparent Film Cartridge, 12 exposures, $2\frac{1}{4} \times 3\frac{1}{4}$,40
Do., 6 exposures,20
Kodak Portrait Attachment,50
Black Sole Leather Carrying Case, with shoulder strap,	1.25



Folding Pocket Kodak No. 1A.

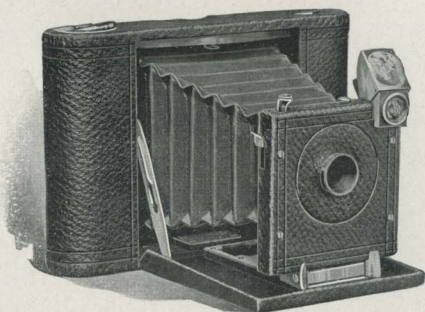
A UNIQUE feature of this instrument is the artistic shape of the pictures which it makes. Their size, $2\frac{1}{2} \times 4\frac{1}{4}$, is particularly adapted to broad landscape views where the instrument is used horizontally, and to portraiture (especially full length figures) where it is used vertically. The No. 1A is, nevertheless, wonderfully light and compact.

The lens is meniscus achromatic with a fixed focus of 5 inches, the shutter is the Eastman Automatic described on page 22, and is equipped with a set of three stops. It has two finders, one for vertical and one for horizontal exposures, and a capacity of 12 exposures without reloading. The size, $1\frac{3}{4} \times 3\frac{7}{8} \times 7\frac{3}{4}$ inches, is marvelously small for an instrument of such great capabilities, and the weight is but 18 ounces.

Made of aluminum, covered with fine black seal grain leather and has nickeled fittings.

THE PRICE.

Folding Pocket Kodak No. 1A, for pictures $2\frac{1}{2} \times 4\frac{1}{4}$ inches, with achromatic lens, not loaded,	\$12.00
Transparent Film Cartridge, 12 exposures, $2\frac{1}{2} \times 4\frac{1}{4}$,50
Do., 6 exposures,25
Kodak Portrait Attachment,50
Black Sole Leather Carrying Case, with shoulder strap,	1.25



No. 2 Folding Pocket Kodak.

THAT the $3\frac{1}{2} \times 3\frac{1}{2}$ size has long been a popular one with amateurs is shown by the enormous sale of the $3\frac{1}{2} \times 3\frac{1}{2}$ Bulls-Eye Kodaks. Furthermore, it is the largest size with which a fixed focus lens can be properly used, and it thus appeals to the many amateurs who do not wish to be bothered with a focusing scale—yet desire the largest possible picture. A Folding Pocket Kodak which will make $3\frac{1}{2} \times 3\frac{1}{2}$ pictures is, therefore, a most desirable instrument.

The No. 2 Folding Pocket Kodaks have a capacity of 12 exposures, $3\frac{1}{2} \times 3\frac{1}{2}$, yet measure but $1\frac{1}{2} \times 4\frac{1}{2} \times 6\frac{3}{4}$ inches, and weigh 17 ounces. They have meniscus achromatic lenses of great depth and speed and with a fixed focus of $4\frac{1}{2}$ inches. They have the Eastman automatic shutter described on page 22, have sets of three stops, brilliant finder, and socket for tripod screw. They are made of aluminum, have the finest black seal grain cover, have handsomely nickeled fittings and are at once strong, dainty and durable.

THE PRICE.

No. 2 Folding Pocket Kodak, for pictures $3\frac{1}{2} \times 3\frac{1}{2}$ inches, with achromatic lens, not loaded.	\$15 00
Transparent Film Cartridge, 12 exposures, $3\frac{1}{2} \times 3\frac{1}{2}$.	.60
Do., 6 exposures.	.20
Do., "Double-Two" Cartridge (4 exposures).	.50
Kodak Portrait Attachment.	1.25
Black Sole Leather Carrying Case, with shoulder strap.	

No. 3 Folding Pocket Kodak.

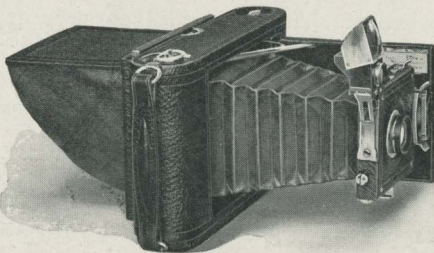
TO its combination of perfect simplicity and compactness, with adaptability to a wide range of work, the wonderful success of this instrument is due. It has the capacity of cameras of triple its bulk, loading for 12 pictures $3\frac{1}{4} \times 4\frac{1}{4}$ inches, yet it weighs only 22 ounces and measures but $1\frac{5}{8} \times 4\frac{1}{2} \times 7\frac{1}{2}$ inches.



It is fitted with double combination lenses, which are strictly rectilinear and very rapid. It has our Automatic shutter, described on page 22, has a focusing scale, set of three stops, tripod sockets for both vertical and horizontal exposures, and a brilliant reversible finder with hood.

Made of aluminum, covered with the finest black seal grain leather, and with nicked fittings, the No. 3 Folding Pocket Kodak is light, strong and handsome. A desirable feature is the size, $3\frac{1}{4} \times 4\frac{1}{4}$, which adapts the negatives to the making of lantern slides by contact. Indeed, it is the ideal camera for those who demand the highest excellence in camera construction, yet desire a pocket instrument.

By the use of a simple Adapter these instruments may be readily used with glass dry plates. This attachment is simply an extra back for the camera, taking the place of the regular back, and can be placed in position in a few seconds. It has a ground glass for focusing and focusing shade and with it are used single aluminum plate holders, which are very light, yet safe.

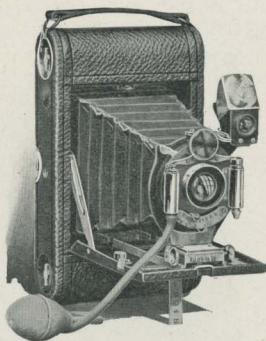


Showing No. 3 Folding Pocket Kodak with Plate Attachment, and with Focusing Shade Raised.

No. 3 FOLDING POCKET KODAK—Continued.

THE PRICE.

No. 3 Folding Pocket Kodak, for pictures 3¼ x 4¼ inches, with Rapid Rectilinear lens, and Eastman Automatic shutter, not loaded,	\$17.50
Do., with R. R. lens, speed f. 8, and B. & L. Automatic shutter (see page 25),	25.00
Glass Plate Adapter, with ground glass,	3.50
Single Glass Plate Holders, 3¼ x 4¼, each, Transparent Film Cartridge, 12 exposures, 3¼ x 4¼,50
Do., 6 exposures,70
Do., "Double-Two" Cartridge, 4 exposures, Kodak Portrait Attachment,35
Black Sole Leather Carrying Case, with shoulder strap,25
	.50
	1.25



No. 3 Folding Pocket Kodak
with B. & L. Auto-
matic Shutter.

No. 3 Folding Pocket Kodak De Luxe.

THIS superb instrument is similar in construction to the No. 3 Folding Pocket Kodak described above, but is equipped with the Bausch & Lomb Plastigmat lens No. 1, speed f. 6.8, which has a focal length of 5 inches, and is fully guaranteed as an anastigmatic lens of the most perfect type, and has the B. & L. Automatic shutter, shown on page 25. The covering is of selected Persian morocco, a leather with a beautiful natural pattern in soft brown tints; the bellows are covered with brown silk; on each instrument is a solid silver name plate, and with each one is included a hand sewed carrying case of Persian morocco, with silver trimmings.

For a gift it has the special charm of individuality and elegance. The donor will have the satisfaction of knowing that he has given an instrument that has no equal in beauty of finish and design, and no superior in equipment.

THE PRICE.

No. 3 Folding Pocket Kodak de Luxe, for pictures 3¼ x 4¼ inches, with No. 1 Plastigmat lens, B. & L. Automatic shutter, with Carrying Case, not loaded,	\$75.00
Transparent Film Cartridge, 12 exposures, 3¼ x 4¼,70
Do., 6 exposures,35
Do., "Double-Two" Cartridge, 4 exposures,25

Folding Pocket Kodak No. 3A.

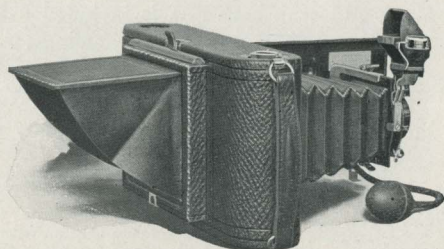
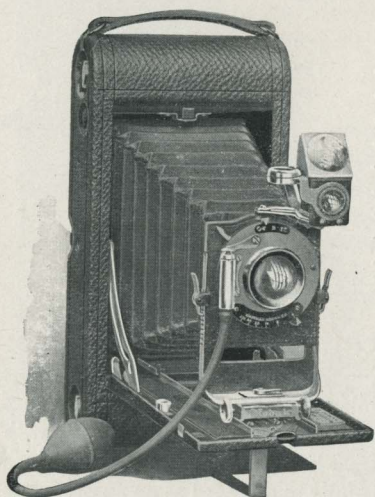
IN this instrument is the highest achievement in the evolution of pocket photography. Carried in a top coat pocket, or in a case, it is flat, unobtrusive, out of the way. Yet the size and shape of the

pictures which it takes, $3\frac{1}{4} \times 5\frac{1}{2}$, is such as to commend it to the most ambitious amateurs, and the instrument has all of the really practical features found in cameras of three times its bulk. While embodying several features not heretofore found in pocket instruments, the Kodak Simplicity is fully maintained, and the merest novice can operate it with perfect success with no further instructions than those contained in the illustrated Manual which accompanies each instrument.

The Folding Pocket Kodaks have done much to demonstrate that bulky apparatus is not neces-

sary, even in serious work. This latest addition to the series will still further prove the practical value of pocket instruments.

The lenses furnished with the regular equipment are rapid rectangular and are selected and tested with the utmost care. They have focal length of $6\frac{1}{2}$ inches and a speed of $f. 8$, covering fully with this opening. The shutter is the new F. P. K. Automatic, fully described on page 24, and is capable of giving the full working value of the lens. A new feature, as



Folding Pocket Kodak No. 3A: Showing Plate Adapter with Focusing Shade Raised.

FOLDING POCKET KODAK No. 3A—Continued.

applied to pocket instruments, is the rising, falling and sliding front. There are tripod sockets for both vertical and horizontal exposures, a brilliant reversible finder, a spirit level, reversing with the finder, and thus of value for either upright or horizontal pictures, and focusing scale.

The elongated shape of the pictures taken with this instrument makes them particularly attractive. For landscape work they are almost panoramic in effect, while for three-quarter and full length portraits they could not be improved upon. The field of pocket photography is greatly widened by the introduction of this instrument.

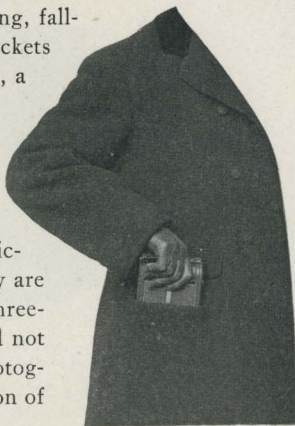
Considering the size of the pictures and its wide capabilities the compactness of the camera is remarkable, the measurements being $1\frac{7}{8} \times 4\frac{3}{4} \times 9\frac{1}{2}$ inches, and the weight, loaded for 6 exposures $3\frac{1}{4} \times 5\frac{1}{2}$ inches, only 41 ounces. Made of aluminum, covered with the finest seal grain leather, and with full nickel fittings, the Folding Pocket Kodak No. 3A is as strong, as durable and as handsome as it is efficient.

By the use of a simple adapter (extra) these Kodaks may be used with glass plates, taking the standard size, $3\frac{1}{4} \times 4\frac{1}{4}$. This attachment is simply an extra back for the camera, taking the place of the regular back, and can be placed in position in a few seconds. It has a ground glass for focusing and focusing shade, and with it are used single aluminum plate holders which are very light, yet safe.

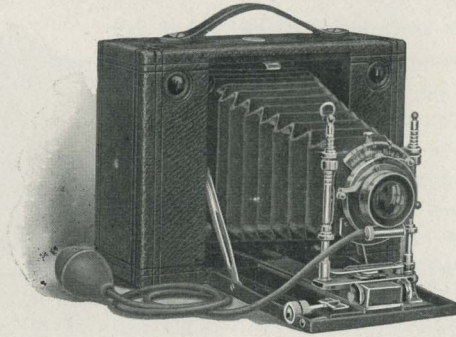
Ready about May 15th.

THE PRICE.

Folding Pocket Kodak No. 3A, for pictures $3\frac{1}{4} \times 5\frac{1}{2}$ inches, with Rapid Rectilinear Lens, speed <i>f</i> . 8, and F. P. K. Automatic Shutter,	\$20.00
Do., with B. & L. Automatic Shutter (see page 25),	27.50
Black Sole Leather Carrying Case, with strap,	1.50
Glass Plate Adapter, with Ground Glass,	3.50
Single Glass Plate Holders, $3\frac{1}{4} \times 4\frac{1}{4}$, each,50
Transparent Film Cartridge, 6 exposures, $3\frac{1}{4} \times 5\frac{1}{2}$,40
Do., "Double-Two" Cartridge (4 exposures),30



They will go in a Top-Coat Pocket.

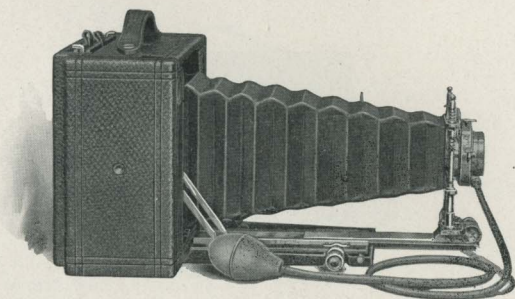


Cartridge Kodaks.

KODAK simplicity is combined in these cameras with the widest capabilities. Whether one wishes to make a snap-shot, or make an enlargement from one of his own negatives, they will accomplish the work perfectly. By their great scope they open practically the entire field of photography to the amateur.

Strength and lightness are secured in the Cartridge Kodaks by a judicious combination of aluminum and hard wood—the latter being treated to a secret process of our own by which it resists atmospheric changes to a remarkable degree. We have ourselves been surprised at the rough usage and severe climatic changes which these instruments have withstood in Cuba, China, the Philippines and South Africa, and, with the increased use of aluminum in the new models, these instruments are even stronger than were the earlier designs. No other camera of equal capabilities can so well withstand the rough usage of travel.

The lenses furnished in the regular equipment are strictly rectilinear and very rapid, having a working speed of $f. 8$. They do not, therefore, require the most favorable conditions, but enable the operator to secure good instantaneous pictures under circumstances where such pictures would be impossible with a less powerful lens. Our system of inspection insures a perfect lens with every instrument.



CARTRIDGE KODAKS—*Continued.*

Wide angle lenses, the cells of which fit the regular shutter, and which are easily attached, can be supplied at a very reasonable extra charge, or, if desired, the instruments may be given a special lens and shutter equipment. See page 52.

The Eastman Triple Action shutters furnished with the Cartridge Kodaks are accurate and reliable; meet every requirement of the most advanced amateurs, and have iris diaphragm stops from No. 4 to No. 128. They are described in detail on page 23.

The new Cartridge Kodaks have an improved rising front which locks automatically, and also an improved side slide (rising when used for horizontal pictures) and have aluminum leather covered front boards of great strength, but which are nevertheless light, and are very neat in appearance.

The glass plate attachments which are supplied (extra) for these instruments are in no way "trappy" and are attached by simply removing the back and replacing with glass plate attachment, an operation requiring but a few seconds. With plates the instrument may be focused, either on the ground glass or by the focusing scale.

An extra extension to bellows, operated by means of rack and pinion, permits the photographing of objects at a distance of only 18 inches from the lens, and also permits of the advantageous use of a telephoto attachment. With the extra extension the ground glass is, of course, to be employed in focusing.



CARTRIDGE KODAKS—*Continued.*

The Cartridge Kodaks are so constructed as to make them practical enlarging cameras, for which purpose they are particularly convenient. These instruments will make enlargements of any size, being limited only in the negatives which they will "cover." The No. 3, for instance, will make enlargements from $3\frac{1}{4} \times 4\frac{1}{4}$, or from any smaller negatives, the No. 4 from 4×5 or smaller, and the No. 5 from 5×7 or smaller.

The No. 3 Cartridge Kodaks appeal strongly to lantern slide workers, as they make pictures of the proper size for making lantern slides by contact, at the same time having that optical perfection so necessary to the lanternist. Absolute sharpness is, of course, a first essential in lantern slides, for the reason that any imperfection in the slide will be magnified many times when projected on the screen. The No. 3 Cartridge Kodak has no superior for this work.

The Cartridge Kodaks have brilliant finders, and tripod sockets for both vertical and horizontal exposures, have our patent non-collapsing bellows and are covered with the finest seal grain leather. The richness of the leather and the polished mahogany set off the nicked fittings in brilliant contrast, while the correct proportioning of all the parts gives an instrument which satisfies the eye in every detail. In design, construction and finish they more than meet the demands of the most exacting experts—they leave nothing to be desired.

No. 3 CARTRIDGE KODAK.

FILM AND PLATES.

For rectangular pictures, $4\frac{1}{4} \times 3\frac{1}{4}$ inches; capacity, 12 exposures without reloading; size, closed, $3\frac{1}{4} \times 5\frac{3}{4} \times 7\frac{1}{2}$ inches; weight, 2 lbs., 12 ozs.; length of focus of lens, 6 inches.

No. 3 Cartridge Kodak, Rapid Rectilinear lens, Eastman Triple Action Pneumatic shutter, not loaded,	\$20.00
Transparent Film Cartridge, 12 exposures, $4\frac{1}{4} \times 3\frac{1}{4}$,70
Do., 6 exposures,35
Do., "Double-Two" Cartridge, 4 exposures,25
Glass Plate Adapter, with ground glass,	2.00
Double Plate Holders, each,	1.00

No. 4 CARTRIDGE KODAK.

FILM AND PLATES.

For rectangular pictures, 5 x 4 inches; capacity, 12 exposures without reloading; size of camera, $3\frac{1}{4} \times 6\frac{3}{8} \times 8\frac{1}{4}$ inches; weight, 3 lbs., 2 ozs.; length of focus of lens, $6\frac{1}{2}$ inches.

No. 4 Cartridge Kodak, with Rapid Rectilinear lens and Eastman Triple Action Pneumatic shutter, not loaded,	\$25.00
Transparent Film Cartridge, 12 exposures, 5 x 4,90
Do., 6 exposures,45
Do., "Double-Two" Cartridge, 4 exposures,30
Glass Plate Adapter, with ground glass,	2.50
Double Glass Plate Holders, each,	1.00

No. 5 CARTRIDGE KODAK.

FILM AND PLATES

For rectangular pictures, 7 x 5 inches; capacity, 12 exposures without reloading; size of camera, $3\frac{3}{8} \times 8\frac{1}{2} \times 10$ inches; weight, 4 lbs., 8 ozs.; length of focus of lens, $8\frac{1}{2}$ inches.

No. 5 Cartridge Kodak, with Rapid Rectilinear lens and Eastman Triple Action Pneumatic shutter, not loaded,	\$35.00
Transparent Film Cartridge, 12 exposures, 7 x 5,	1.60
Do., 6 exposures,80
Do., "Double-Two" Cartridge, 4 exposures,55
Glass Plate Adapter, with ground glass,	3.00
Double Glass Plate Holders, each,	1.25



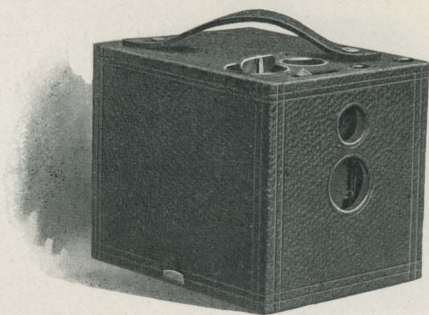
No. 2 Flexo Kodak.

THE steadily increasing popularity of this instrument is conclusive evidence of its worth. It is simple in construction, but it stands the supreme test—it makes good pictures. Without exception it is the most reliable and efficient \$5.00 camera ever offered.

The No. 2 Flexo is in every respect a well made instrument, and is fitted with fixed focus achromatic lens, set of three stops, finder, socket for tripod screw and our improved rotary shutter described on page 21. It has a capacity of 12 exposures without reloading, making pictures $3\frac{1}{2} \times 3\frac{1}{2}$ inches, measures $4\frac{3}{8} \times 4\frac{3}{8} \times 5\frac{7}{8}$ inches, and weighs 19 ounces. It is covered with fine grain leather and is handsomely finished. The Flexo, like the other Kodaks, is complete—ready for use, the price including every requisite for taking pictures, except the film, whereas the price of most of the so-called five dollar plate cameras includes but one holder, and a further expenditure of \$2.00 or \$3.00 is called for to supply the necessary number of holders.

THE PRICE.

No. 2 Flexo Kodak, for pictures $3\frac{1}{2} \times 3\frac{1}{2}$ inches, with achromatic lens, not loaded,	\$5.00
Transparent Film Cartridge, 12 exposures, $3\frac{1}{2} \times 3\frac{1}{2}$,	.60
Do., 6 exposures,	.30
Do., "Double-Two" Cartridge (4 exposures),	.20
Kodak Portrait Attachment,	.50
Black Sole Leather Carrying Case, with shoulder strap,	1.25



No. 2 Bulls-Eye Kodak.

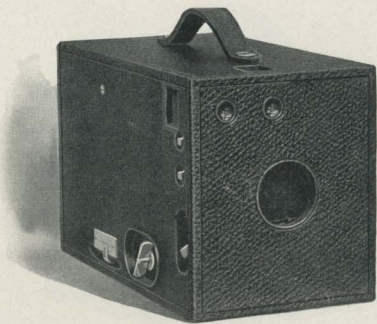
IT was this instrument that first popularized the cartridge system. For ten years its simple and practical excellence has maintained it as the leader among box form cameras. Since the earlier models great improvements have, of course, been made, but in none of them has there been any sacrifice of the simplicity in operation.

The No. 2 Bulls-Eye has a capacity for 12 pictures, $3\frac{1}{2} \times 3\frac{1}{2}$ inches, measures $4\frac{1}{2} \times 4\frac{5}{8} \times 5\frac{3}{4}$ inches, and weighs 22 ounces. It has a meniscus achromatic lens with fixed focus of $4\frac{1}{2}$ inches, the Eastman rotary shutter, described on page 21, set of three stops, brilliant finder, socket for tripod screw. The No. 2 Bulls-Eyes are covered with the finest seal grain leather, have nickeled fittings and are handsomely finished.

THE PRICE.

No. 2 Bulls-Eye Kodak, for pictures $3\frac{1}{2} \times 3\frac{1}{2}$ inches, fitted with meniscus achromatic lens, not loaded,	\$8.00
No. 2 Bulls-Eye Special Kodak, for pictures $3\frac{1}{2} \times 3\frac{1}{2}$ inches, Rapid Rectilinear lens, $5\frac{3}{8}$ inch focus, Eastman Triple Action Shutter, (see page 23), not loaded,	15.00
Transparent Film Cartridge, 12 exposures, $3\frac{1}{2} \times 3\frac{1}{2}$,	.60
Do., 6 exposures,	.30
Do., "Double-Two" Cartridge (4 exposures),	.20
Kodak Portrait Attachment,	.50
Black Sole Leather Carrying Case, with shoulder strap,	1.25

You press the button—



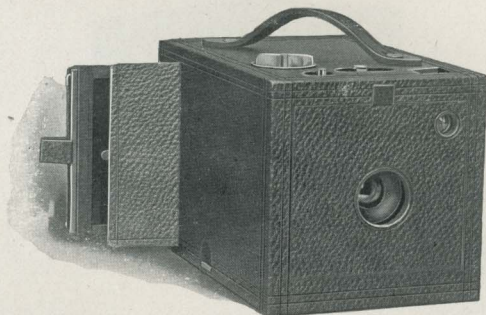
No. 4 Bulls-Eye Kodak.

THIS instrument is a simple and practical camera of the box form, making pictures of the popular 4 x 5 size. It is well made in every particular and is splendidly equipped.

The No. 4 Bulls-Eye has an achromatic lens of superior quality and with a focus of $6\frac{1}{4}$ inches. It has the Eastman rotary shutter, described on page 21, focusing scale, set of three stops, two brilliant finders, one for vertical and one for horizontal exposures, and is provided with two tripod sockets, one for vertical and one for horizontal exposures. It has a capacity of 12 exposures, 4 x 5, measures $5 \times 5\frac{7}{8} \times 9\frac{1}{4}$ inches, and weighs 2 pounds, 10 ounces. It has a handsome finish, nickel fittings, and is covered with fine seal grain leather.

THE PRICE.

No. 4 Bulls-Eye Kodak, for pictures 4 x 5 inches, fitted with achromatic lens, not loaded,	\$12.00
No. 4 Bulls-Eye Special Kodak, for pictures 4 x 5 inches, fitted with Rapid Rectilinear lens, speed <i>f.</i> 8; $6\frac{1}{2}$ inch focus, Eastman Triple Action Shutter (see page 23), not loaded,	20.00
Transparent Film Cartridge, 12 exposures, 4 x 5,90
Do., 6 exposures,45
Do., "Double-Two" Cartridge (4 exposures),30
Black Sole Leather Carrying Case, with shoulder strap,	2.00



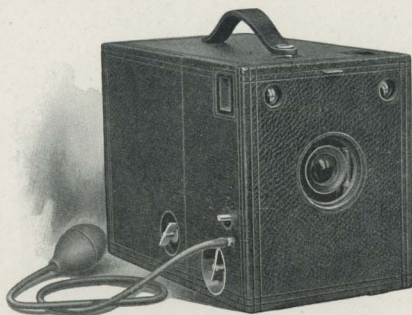
No. 2 Bullet Special Kodak.

THIS is an instrument of wide capabilities and the finest optical quality, yet it is simple and inexpensive. The No. 2 Bullet Special Kodak has a capacity of 12 exposures, $3\frac{1}{2} \times 3\frac{1}{2}$, when used with film, or may be used (with double plate holder) with $3\frac{3}{4} \times 3\frac{1}{2}$ glass plates. It has the finest Rapid Rectilinear lenses and the Eastman Triple Action shutter, described on page 23. The lens has a fixed focus of $5\frac{3}{8}$ inches, and is equipped with iris diaphragm stops, graduated for Nos. 4, 8, 16, 32, 64 and 128.

Size of camera, $4\frac{3}{4} \times 4\frac{3}{4} \times 7\frac{1}{2}$ inches; weight, 2 lbs., 2 ozs. Fitted with square, brilliant finder, socket for tripod screw, and covered with fine black morocco, nickel fittings and beautiful finish. In every respect a superior instrument.

THE PRICE.

No. 2 Bullet Special Kodak, for pictures $3\frac{1}{2} \times 3\frac{1}{2}$ inches, with Rapid Rectilinear lens, not loaded,	\$18.00
Transparent Film Cartridge, 12 exposures, $3\frac{1}{2} \times 3\frac{1}{2}$,60
Do., 6 exposures,30
Do., "Double-Two" Cartridge (4 exposures),20
Double Plate Holders, $3\frac{3}{4} \times 3\frac{1}{2}$, each,	1.00
Kodak Portrait Attachment,50
Black Sole Leather Carrying Case, with shoulder strap,	1.25



No. 4 Bullet Special Kodak.

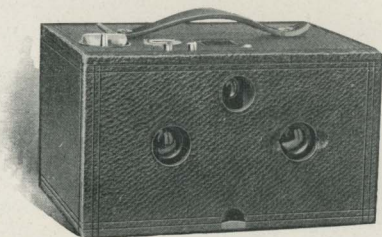
THIS is unquestionably the finest box form camera manufactured. It is of the highest grade in every detail and is a compact and convenient instrument, whether used with cartridge films or glass plates. With films it has a capacity of 12 exposures, 4 x 5, or it takes 4 x 5 double plate holders. Equipped with 6½ inch focus Rapid Rectilinear lenses, with speed of *f*. 8, and with the Eastman Triple Action shutter, described on page 23, adapted to use with bulb or finger release. Has brilliant finders and tripod sockets for both vertical and horizontal exposures, and has carefully adjusted focusing scale, and iris diaphragm stops graduated for Nos. 4, 8, 16, 32, 64 and 128. When used with plates, may be focused on the ground glass if desired.

Former models of the No. 4 Bullet Special used roll holder cartridges. The model C uses Kodak Cartridges of either "Double-Two," 6 or 12 exposures. Be sure, therefore, to specify "Model C" when ordering film for this Kodak.

THE PRICE.

No. 4 Bullet Special Kodak, for pictures 4 x 5 inches, Model C, with Rapid Rectilinear lens, speed <i>f</i> . 8, not loaded,	\$22.50
*Transparent Film Cartridge, 12 exposures, 4 x 5,90
*Do., 6 exposures,45
*Do., "Double-Two" Cartridge (4 exposures),30
*Double Plate Holders, 4 x 5, each,	1.00
*Black Sole Leather Carrying Case, with shoulder strap,	2.25

*Be sure and specify Model C when ordering.



The No. 2 Stereo Kodak.

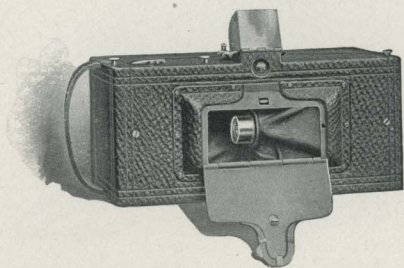
THESE instruments may be said to resemble in model the well known Bulls-Eye cameras, but are equipped with twin Rapid Rectilinear lenses and a modification of our Automatic shutter. They use the standard size No. 2 Kodak Cartridges which may be obtained the world over, and they may be loaded for one, two, three or six stereoscopic pictures. By a simple blind, which cuts off the light from one of the lenses, they may also be used for single exposures, in which case the pictures are the same in size as those made with a No. 2 Bulls-Eye Kodak, $3\frac{1}{2} \times 3\frac{1}{2}$ inches.

The Stereo Kodaks have sets of three stops, square, brilliant finder, spirit level, socket for tripod screw, are covered with fine seal grain leather and have nickeled fittings. They are simple and accurate and they give correct stereoscopic effects.

The No. 2 Stereo Kodaks make the standard size ($3\frac{1}{4} \times 6$) stereoscopic pictures, having a capacity for 6 stereoscopic or twelve single exposures without reloading. Size of Kodak, $4\frac{3}{4} \times 6 \times 8\frac{1}{8}$ inches; weight, 2 lbs., 3 ozs. Length of focus of lenses, $4\frac{3}{4}$ inches.

THE PRICE.

No. 2 Stereo Kodak, fitted with pair of Rapid Rectilinear lenses, not loaded, . . .	\$15.00
Transparent Film Cartridge, 6 stereo exposures (regular No. 2 Bulls-Eye 12 ex. cart.),60
Do., 3 exposures (No. 2 B.-E. 6 ex. cart.),30
Do., 2 exposures (No. 2 B.-E. "Double-Two" cart.),20
Black Sole Leather Carrying Case, with shoulder strap, . . .	2.00



The Panoram-Kodaks.

NO mechanism has yet been made that would accomplish every kind of work. The bicycle cannot draw an express train, nor can the giant express locomotive follow the sinuous windings of a cycle path. No one camera can occupy every niche in the house of photography. The Panoram-Kodaks occupy a niche of their own. For certain work they are unequalled; they open up a new phase in picture taking. They widen the scope and interest in landscape work. Pictures of broad landscapes, river and marine views, made with these instruments, have a breadth and beauty not attainable with the ordinary camera. Vertical pictures of high waterfalls and mountain peaks, as well as horizontal pictures, give most delightful effects, while the great speed of the swinging lens and shutter, combined with the wide scope of view, make them unequalled in the taking of out-door group pictures, the subjects in such cases being arranged in a semi-circle and all at an equal distance from the Kodak.

These instruments have carefully tested achromatic lenses, improved two-speed shutters, spirit levels, brilliant finders, which show the sky and foreground, and by means of which the entire view may be

THE PANORAM-KODAKS—Continued.

examined by simply swinging the camera, before exposure, so as to take in the full scope of view, as indicated by the V shaped lines on top of camera. The Panoram-Kodaks are covered with the finest black morocco, have nicked fittings and are beautifully finished.

These instruments are, of course, not intended for taking timed exposures or interiors.

No. 1 PANORAM-KODAK.

USES No. 1 FOLDING POCKET KODAK CARTRIDGES.

For pictures, 2 1/4 x 7 inches; capacity, 6 exposures without reloading; size of camera, 3 3/8 x 4 1/4 x 7 3/8 inches; weight, 24 ounces; length of focus of lens, 3 9/16 inches; angle of view, 112°.

No. 1 Panoram-Kodak, not loaded,	\$10.00
Transparent Film Cartridge, 6 exposures, 2 1/4 x 7 (regular No. 1 Folding Pocket Kodak Cartridge),40
Do., 3 exposures,20
Black Sole Leather Carrying Case, with shoulder strap,	1.75

No. 4 PANORAM-KODAK.

USES No. 4 BULLS-EYE FILM CARTRIDGES.

For pictures, 3 1/2 x 12 inches; capacity, 5 exposures without reloading; size of camera, 4 3/4 x 5 1/2 x 10 1/8 inches; weight, 2 lbs., 14 ozs.; length of focus of lens, 5 inches; angle of view, 142°.

No. 4 Panoram-Kodak, not loaded,	\$20.00
Transparent Film Cartridge, 5 exposures, 3 1/2 x 12 (regular No. 4 Bulls-Eye Cartridges),90
Do., 2 exposures,45
Black Sole Leather Carrying Case, with shoulder strap,	2.00

You press the button—



No. 1 Brownie Camera.

THE Brownie Cameras have not only proven themselves to be wonderfully reliable and accurate little instruments, but have demonstrated that photography—as simplified by the Cartridge system—is readily within the grasp of the school boy and the school girl.

The No. 1 Brownie Cameras make pictures $2\frac{1}{4} \times 2\frac{1}{4}$ inches, loading in daylight for six exposures. They have $3\frac{1}{4}$ inch focus meniscus lenses, and the Eastman Rotary shutter, described on page 21, the shutter, however, having one stop only. These instruments measure $3 \times 3\frac{1}{8} \times 4\frac{7}{8}$ inches and weigh 8 ounces.

V shaped lines on top of camera give the scope of view, and the novice will soon be able to judge accurately by them just what will appear in the picture, or a Brownie finder (detachable) may be provided for only 25 cents.

The Brownie finder can be attached or detached in an instant, a metal clamp clasping the top of camera and holding it securely in position.

The Brownies are strongly made, are covered with imitation leather and have nicked fittings.

Forty-four page instruction book free with every instrument.

THE PRICE.

No. 1 Brownie Camera, for $2\frac{1}{4} \times 2\frac{1}{4}$ pictures,	\$1.00
Transparent Film Cartridge, 6 exposures, $2\frac{1}{4} \times 2\frac{1}{4}$,15
Brownie Finder, detachable,25
No. 1 Brownie Carrying Case, holds camera and finder,50
No. 1 Brownie Developing and Printing Outfit, including Dekko Paper for 24 prints,75



No. 2 Brownie Camera.

THE marvelously good work which has been accomplished by boys and girls with the No. 1 Brownie accounts for the fact that no other camera ever had so large a sale in so short a time. They were not only cheap in price, but they were simple to operate, and *they made good pictures*. In the No. 2 we have extended the Brownie idea to a camera which makes pictures $2\frac{1}{4} \times 3\frac{1}{4}$ inches. It has the Eastman Rotary shutter and set of three stops described on page 21, has a fine meniscus lens of $4\frac{1}{2}$ inch focus, has two finders, one for vertical and one for horizontal exposures, and has a capacity of six exposures without reloading.

The No. 2 Brownie Cameras measure $3\frac{1}{4} \times 4 \times 5\frac{5}{8}$ inches; weigh 13 ounces; are covered with fine imitation leather; have handsomely nickered fittings, and are well made in every particular.

These little instruments may, if desired, be fitted with the Kodak Portrait Attachment described on page 50, by means of which they will make large bust photographs.

THE PRICE.

No. 2 Brownie Camera, for $2\frac{1}{4} \times 3\frac{1}{4}$ pictures,	\$2.00
Transparent Film Cartridge, for 6 exposures, $2\frac{1}{4} \times 3\frac{1}{4}$,20
No. 2 Brownie Carrying Case, with shoulder strap,75
No. 2 Brownie Portrait Attachment,50
A B C Developing and Printing Outfit, see page 56,	1.50



Kodak Developing Machines.

THE Kodak Developing Machines are made by special machinery with such care as to insure their working perfectly. Constructed of brass and then fully nickeled, they are durable and handsome instruments. The Kodak Developing Machines may be readily packed in the traveler's trunk or suit case, or the Style A, E and H machines may be carried as hand baggage in their handsome wooden cases.

An outline of the operation of machine, and what it will accomplish, is given on pages 5 to 14.

Any Roll Holder Cartridges, except the No. 4 Horizontal (4-inch spool) and the No. 5, may also be developed in the Kodak Developing Machine.

THE PRICE.

STYLE A KODAK DEVELOPING MACHINE. For use with No. 0, No. 1 and No. 1A Folding Pocket Kodak, No. 1 Panoram-Kodak and No. 1 and No. 2 Brownie cartridges (price includes a handsomely finished wooden carrying case, with leather handle),	\$6.00
STYLE E KODAK DEVELOPING MACHINE. For use with Kodak and Brownie cartridges of all sizes up to and including 4 x 5 (price includes a handsomely finished wooden carrying case, with leather handle),	7.50
STYLE H KODAK DEVELOPING MACHINE. For use with No. 5 Cartridge Kodak Films or any smaller size (price includes a handsomely finished wooden carrying case with leather handle),	10.00
THE "BROWNIE" KODAK DEVELOPING MACHINE. For use with No. 1 and No. 2 Brownie cartridges (packed in neat wooden box),	2.00

Kodak Developing Machine Sundries.

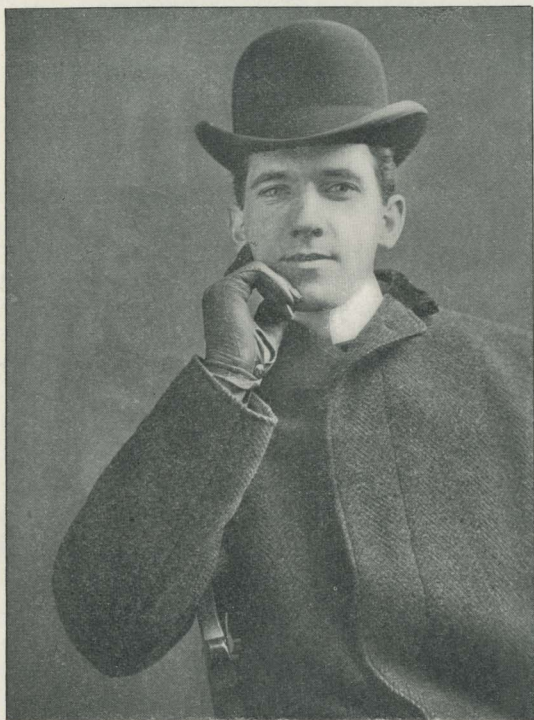
POOOR chemicals are responsible for more photographic failures than poor plates or poor films. Inasmuch as the operator of the Kodak Developing Machine cannot see his results until development is complete, it is of the utmost importance that his chemicals be *right*. The Developing Powders and Fixing Powders which we put up for use with the machine are tested with our film and with the machine. They are known to be right. If you use anything else you are experimenting.

Too great stress can hardly be put upon this question of using pure and properly prepared chemicals. There are many cheap developers on the market which should be avoided if you expect to get the best possible results in your negatives. The manufacturer of a film, a plate or a paper best knows how to make a developer to work with his product, and, furthermore, he is directly interested in having his customers obtain perfect results. Naturally, therefore, he uses unusual care in the preparation of developer for his products. You cannot secure the best results if you use the cheap substitutes put up by concerns not directly interested in the films, the plates or the papers that you use.

THE PRICE.

Kodak Developing Outfits, for use with Kodak Developing Machine, including ½ dozen Developer Powders, ½ dozen Fixing Powders, 2 Graduates, Stirring Rod, Glycerine and Squeegee:

"A" for use with Style A Machine,	\$1.25
"E" for use with Style E Machine,	1.60
"H" for use with Style H Machine,	2.00
"Brownie" for use with Brownie Machine,75
Kodak Developer Powders for Style A Machine, per package of ½ dozen,20
Do., for Style E Machine,30
Do., for Style H Machine,40
Do., for Brownie Machine,15
Kodak Fixing Powders for Style A Machine, each,05
Do., for Style E Machine,07
Do., for Style H Machine,10
Kodak Fixing Powders for Brownie Machine, per package of ½ doz. powders,10

Kodak Portrait Attachments.

Made with No. 3 Folding Pocket Kodak and Portrait Attachment.—Exact Size.

MAKING portraits isn't the trouble that it once was. A fifty cent attachment on a tiny Kodak or Brownie will enable one to make good sized head and shoulder pictures—and the quality of the work that may be done with these attachments is the very best. Portraiture is one of the most enjoyable phases of amateur photography, for good home pictures of one's friends have an ever increasing



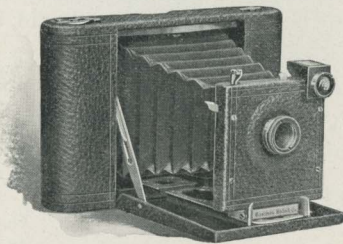
Kodak Portrait Attachment for No. 2 Bulls-Eye.

interest and charm. By the use of the Kodak Portrait Attachment any one of the cameras named below will make head and shoulder pictures equaling in size an ordinary mantello photograph. These attachments are simply extra lenses, which slip on over the lens hood or are inserted in the opening in the front board of camera, as the case may be.

KODAK PORTRAIT ATTACHMENTS—Continued.

They in no way affect the operation of the Kodak, except that they make it cut sharp at a distance of three and one-half feet, and, consequently, throw more distant objects out of focus. They are, therefore, to be used for bust portrait work only.

Kodak Portrait Attachments are made for the following instruments :



No. 2 Folding Pocket Kodak with Portrait Attachment.

- No. 0 Folding Pocket Kodaks,
- No. 1 Folding Pocket Kodaks,
- No. 1A Folding Pocket Kodaks,
- No. 2 Folding Pocket Kodaks,
- No. 3 Folding Pocket Kodaks,*
- No. 2 Bulls-Eye Kodaks, No. 2 Bulls-Eye Special Kodaks, No. 2 Bullet Special Kodaks, No. 2 Flexo Kodaks, No. 2 Brownie Cameras.

Price of attachment to fit either of above instruments, 50 cents.

Be sure and give exact designation of instrument when ordering.

*If camera has special shutter, give exact designation in ordering.

Wide Angle Lenses.

CARTRIDGE Kodaks may be fitted with our Wide Angle Kodak lenses at a trifling cost. These lenses are mounted in cells to fit any of the shutters listed with these instruments, and are, therefore, interchangeable with the longer focus lenses furnished with the Cartridge Kodaks. The W. A. Kodak lenses are rectilinear, have a speed of f. 16 and are carefully tested. With each one we furnish a leather case and a properly graduated focusing scale for attaching to the camera bed.

In ordering give size (No.) of Kodak and specify shutter, lens is to be used with.

THE PRICE.

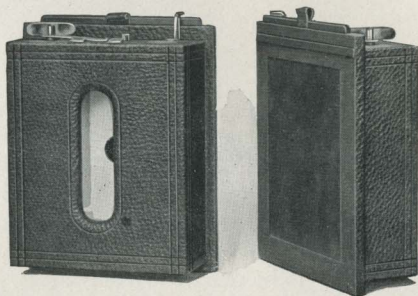
No. 3 (3 1/4 x 4 1/4)	Wide Angle Kodak Lens, equivalent focus, 3 1/2 inches, speed f. 16,	\$5.00
No. 4 (4 x 5)	Wide Angle Kodak Lens, equivalent focus, 4 1/2 inches, speed f. 16,	5.00
No. 5 (5 x 7)	Wide Angle Kodak Lens, equivalent focus, 5 1/2 inches, speed f. 16,	7.50

Special Lens and Shutter Equipments.

IN place of the excellent regular equipment with which we furnish the Cartridge Kodaks, the No. 3 and the No. 3A Folding Pocket Kodaks, these instruments can be equipped with Bausch & Lomb Plastigmat lenses, or with the Series III. Goerz Anastigmat lenses, if the customer so desires.

THE PRICE.

No. 3 Folding Pocket Kodak, Bausch & Lomb Plastigmat lens No. 1, speed <i>f.</i> 6.8 and B. & L. Automatic Shutter,	\$57.00
Do., with Volute Shutter,	64.00
Do., Goerz No. 0 Series III. Anastigmat lens, speed <i>f.</i> 6.8 and B. & L. Automatic Shutter,	60.50
Do., with Volute Shutter,	67.50
No. 3A Folding Pocket Kodak, Bausch & Lomb Plastigmat lens No. 2, speed <i>f.</i> 6.8 and B. & L. Automatic Shutter,	65.00
Do., with Volute Shutter,	72.00
Do., with Goerz No. 1, Series III. Anastigmat lens, speed <i>f.</i> 6.8 and B. & L. Automatic Shutter,	70.00
Do., with Volute Shutter,	77.00
No. 3 Cartridge Kodak, Bausch & Lomb Plastigmat lens No. 1, speed <i>f.</i> 6.8 and B. & L. Automatic Shutter,	57.00
Do., with Volute Shutter,	66.00
Do., with Goerz No. 0, Series III. Anastigmat lens, speed <i>f.</i> 6.8 and B. & L. Automatic Shutter,	60.50
Do., with Volute Shutter,	69.50
No. 4 Cartridge Kodak, Bausch & Lomb Plastigmat lens No. 2, speed <i>f.</i> 6.8 and B. & L. Automatic Shutter,	67.50
Do., with Volute Shutter,	76.50
Do., Goerz No. 1, Series III. Anastigmat lens, speed <i>f.</i> 6.8 and B. & L. Automatic Shutter,	72.50
Do., with Volute Shutter,	81.50
No. 5 Cartridge Kodak, Bausch & Lomb Plastigmat lens No. 3, speed <i>f.</i> 6.8 and B. & L. Automatic Shutter,	84.50
Do., with Volute Shutter,	93.50
Do., with Goerz No. 3, Series III. Anastigmat lens, speed <i>f.</i> 6.8 and B. & L. Automatic Shutter,	99.00
Do., with Goerz No. 2, Series III. Anastigmat lens, speed <i>f.</i> 6.8 and Volute Shutter,	97.00



Cartridge Roll Holders.

BY means of the Cartridge Roll Holders those having plate cameras can avail themselves of many of the advantages of the Kodak system at slight expense. They can be fitted to any ordinary camera by an intelligent cabinet maker, or we will do the fitting for a small charge, varying, of course, according to the camera and the work necessary.

The Cartridge Roll Holders load in daylight and are well made of hard wood, with fine seal grain leather covering (except No. 4 horizontal, which is hard wood finish), have nickel fittings, and are handsomely finished.

SPECIAL SPOOLS FOR CARTRIDGE ROLL HOLDERS.

In ordering cartridges, be sure and state that they are for Cartridge Roll Holder, giving length of spool and size of roll holder, as the film and paper are wound differently from those used in the Bullets, Bulls-Eyes, etc. Kodak spools will not fit Cartridge Roll Holders.

THE PRICE.

No. 3 Vertical, for 4¼ x 3¾ pictures, 4¼ inch spool,	\$5.00
No. 4 (4 x 5) Cartridge Roll Holders (specify whether vertical or horizontal),	5.00
No. 5 Vertical Cartridge Roll Holders, 7 inch spool,	6.50

TRANSPARENT FILM CARTRIDGES.

4¼ inch, for No. 3 Cartridge Roll Holder, 12 exposures,70
4 inch, for No. 4 Horizontal Cartridge Roll Holder, 12 exposures,90
5 inch, for No. 4 Vertical Cartridge Roll Holder, 12 exposures,90
7 inch, for No. 5 Cartridge Roll Holder, 12 exposures,	1.60

Tripods.

EASTMAN FOLDING HEAD TRIPOD.

For 4 x 5 Cameras or Smaller.

BY the simplest device, all the inconveniences of the old fashioned tripod have been overcome. Other tripods are either awkwardly bulky when closed or else the head has to be removed from the legs. In this new tripod the head itself folds, and the tripod then makes a compact, rectangular package. There are no loose parts. There is no complicated mechanism.

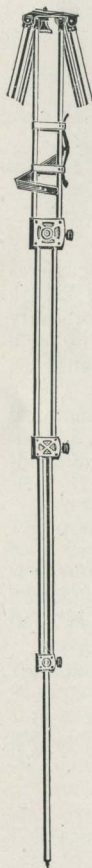
The accompanying illustration shows the working in detail. The brass plate upon which the camera rests is covered with leather, thus protecting the instrument. All of the parts being accurately made, this tripod is exceedingly rigid, in spite of its small size and light weight. The wooden parts are of selected maple, handsomely finished.

Folds in four sections; has leather handle for carrying. Length, folded, 17 inches; length, extended, 52 ½ inches; weight, 25 ounces.

Price, \$3.50
Black Sole Leather Carrying Case, 1.50



Showing Head Folded and Tripod Closed for Carrying.



Showing Head Unfolded Ready to Receive Camera.

TRIPODS—Continued.

THE BULLS-EYE TRIPOD.—Two Sections.

An aluminum revolving head holds the socket screw and seats it in place in camera when turned, thus doing away with tripod screw. Made of spruce, with brass fittings. Leather handle for carrying. For 4 x 5 camera or smaller.

Price, \$1.50

EASTMAN'S FEATHER TRIPOD.—Four Sections.

An aluminum revolving head holds the socket screw and seats it in place in camera when turned, thus doing away with tripod screw. Legs fold in four sections. Length, closed, 14½ inches. Weight, in spruce, 17½ ounces; cherry, 20½ ounces. Brass fittings, superb finish. For 4 x 5 cameras or smaller.

Eastman's Feather Tripod, Spruce,	\$3.00
Do., Cherry,	3.25
Do., Mahogany finish,	3.50
Black Sole Leather Carrying Case,	1.50

THE EASTMAN TRIPOD.—Three Sections.

No. 1, Spruce, for cameras up to 6½ x 8½; weight, 1 lb., 10 oz.,	\$2.25
No. 1, Maple, for cameras up to 6½ x 8½; weight, 2 lbs., 2 oz.,	2.25

NOTE—When kind of wood is not specified, we will furnish in maple.

THE VICTOR TRIPOD.—Two Sections.

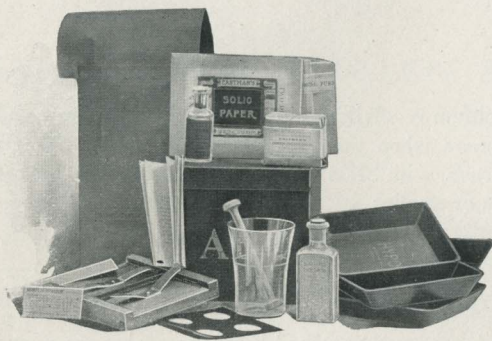
No. 1, Spruce, for cameras up to 6½ x 8½; weight, 1 lb., 11 ozs.,	\$1.50
No. 1, Maple, for cameras up to 6½ x 8½; weight, 2 lbs., 3 ozs.,	1.50

NOTE—When kind of wood is not specified, we will furnish in maple.

THE FLEXO TRIPOD.—Two Sections.

Has a fixed, non-detachable head. Only clear straight-grained wood is used in its construction. The metal work is of brass and all parts are carefully and accurately made.

Price, \$1.00



Developing and Printing Outfits.

EASTMAN'S A B C DEVELOPING AND PRINTING OUTFIT includes every requisite for developing, printing and finishing 24 4 x 5, 2 1/2 x 4 1/4, or 3 1/4 x 4 1/4, or 96 1 5/8 x 2 1/2 pictures.

1 Eastman Improved Candle Lamp, \$0.25	1/2 lb. Hyposulphite Soda,	\$0.07
1 4 x 5 Printing Frame,	1/2 oz. Bromide Potassium,10
" Glass for do.,	2 doz. 4 x 5 Solio Paper,25
1 Glass Beaker,	2 ozs. Solio Toning Solution,15
1 Stirring Rod,	1 oz. Glycerine,05
4 4 1/2 x 5 1/2 Developing Trays,	Instruction Book,10
1/2 doz. Developing Powders,		
		\$2.09

Price, complete, neatly packed, \$1.50

EASTMAN'S BULLS-EYE DEVELOPING AND PRINTING OUTFIT, complete, for developing and printing 12 pictures 3 1/2 x 3 1/2. Similar to above outfit, but containing 1 dozen 3 1/2 x 3 1/2 Solio paper and smaller quantities of chemicals.

Price, complete, neatly packed, \$1.00

SPECIAL 5 x 7 DEVELOPING AND PRINTING OUTFIT, complete, for developing and printing 24 pictures 5 x 7.

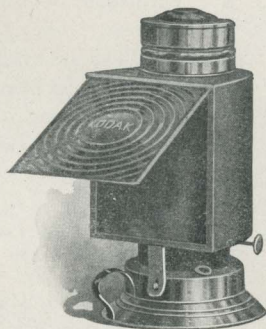
Price, complete, neatly packed, \$2.00

BROWNIE DEVELOPING AND PRINTING OUTFIT, complete, for developing 24 pictures 2 1/4 x 2 1/4 and Printing on Dekko Paper,75

NOTE—These outfits cannot be shipped by mail.

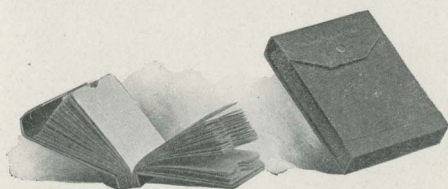
Eastman's Kodak Dark-Room Lamp.

THIS lamp is well made and safe. It is equipped with improved burner carrying extra broad wick, and has new ventilating top, ensuring a bright, steady flame. It is the safest dark-room lamp made, being fitted with both ruby and orange glass. The flame can be controlled from the outside, and it is fitted with adjustable shield to protect the eyes from the light and throw it directly on the work.



No. 1 Improved Kodak Dark-Room Lamps, 1 in. wick, each, \$1.50
 No. 2, do., 5/8 in. wick, each, 1.00

Eastman's Film Negative Albums.



HOW to preserve film negatives is a question that has been successfully answered by the introduction of Eastman's Film Negative Albums. Each album contains 100

pockets made of strong paper and consecutively numbered from 1 to 100, and an index on white paper, ruled and numbered for 100 entries. They thus provide a perfectly safe means of keeping the negatives in such a way that the one desired can always be instantly found.

PRICE.

Eastman's Negative Albums for 100 negatives 3 1/2 x 3 1/2, or smaller, . . . \$.75
 Eastman's Negative Albums for 100 negatives 3 1/4 x 4 1/4, or 4 x 5, . . . 1.00
 Eastman's Negative Albums for 100 negatives 5 x 7, or smaller, . . . 1.50

Kodak Albums

THESE albums are intended for those who want a good, substantial, permanent book for preserving pictures of more than passing interest. They are, therefore, well made and substantially covered. They are made on the loose leaf, lace system and have plain gray leaves, of good heavy stock, 20 leaves to the album. There is no printing on the leaves. The covers are of cloth in a delicate gray tint with the title "The Kodak Book" printed in gold leaf.

PRICE LIST.

- No. 101.** Size of leaf 5 x 6½, 5 inches at back, 20 leaves. Capacity, 40, 4 x 5; 40, 3¼ x 5½; 160, 1½ x 2; 80, 2¼ x 2¼; 80, 1½ x 2½; 40, 3¼ x 4¼; or 40, 3½ x 3½ prints, \$1.00
- No. 102.** Size of leaf 6 x 5, 6 inches at back, 20 leaves. Capacity, 80, 1½ x 2½; 80, 2¼ x 3¼; 80, 2¼ x 2¼; 120, 1½ x 2; or 40, 3½ x 3½ prints, 1.00
- No. 103.** Size of leaf 7 x 6, 7 inches at back, 20 leaves. Capacity, 80, 2½ x 4¼; 160, 1½ x 2 prints. Also appropriate for Brownies or No. 1 Folding Pocket Kodak prints, 1.10
- No. 104.** Size of leaf 9¼ x 6½, 9¼ inches at back, 20 leaves. Capacity, 80, 4 x 5; 80, 3¼ x 5½; 80, 3¼ x 4¼; 120, 2½ x 4¼; 240, 1½ x 2½; or 80, 3½ x 3½ prints, 1.25
- No. 105.** Size of leaf 6½ x 9, 6 inches at back, 20 leaves. Capacity, 40, 5 x 7; or 80 No. 1 Panoram-Kodak Prints, 1.25

"Picture Taking and Picture Making."

A SIMPLE and practical book for the beginner, yet full of "meat" for the advanced amateur. There are four valuable contributed articles: "Platinum Printing," by Alfred Stieglitz; "The Gum Bi-Chromate Process," by M. Robert Demachy; "Sensitizing and Use of Plain Papers," by Bernard Alfieri, and "Carbon Printing," by James A. Sinclair.

See cut on page 19.

Printed on heavy coated paper, beautifully illustrated, 120 pages, cardboard covers, \$.50
Cloth bound, 1.00

Eastman's Photographic Papers.

SOLIO PAPER.

A rapid, glossy printing-out paper.

Size.	Per Pkg. 2 doz.	½ Gross.	Gross.
2½ x 2½,	\$.20	\$.60	\$1.00
2¼ x 3¼,	.20	.60	1.00
2½ x 4¼,	.20	.60	1.00
3½ x 3½,	.20	.60	1.15
3¼ x 4¼,	.20	.60	1.15
3¼ x 5½,	.25	.70	1.25
4 x 5,	.25	.70	1.25
3¼ x 6 (Stereo),	.25	.70	1.25
2¼ x 7 (No. 1 Panoram-Kodak),	.25	.70	1.25
	Per Doz.		
5 x 7,	.30	1.60	2.65
3½ x 12 (No. 4 Panoram-Kodak),	.35	2.00	3.50

SECONDS.—4 x 5 (trimmed) seconds, \$1.00 per gross.

SOLIO Combined Toning and Fixing Sol., per 8 oz. bottle, 50 cts.

Do., 4 oz. bottle (20 cts. extra, postpaid), 30 cts.

DEKKO PAPER.

A quick printing development paper, printing by either artificial light or daylight, and developing in subdued daylight or subdued artificial light. No dark-room required. Beautiful platinum-like effects.

Size.	Doz.	½ Gross.	Gross
2¼ x 3¼,	\$.15	\$.60	\$1.00
2½ x 4¼,	.15	.70	1.25
3½ x 3½,	.15	.80	1.50
3¼ x 4¼,	.15	.80	1.50
3¼ x 5½,	.15	.80	1.50
4 x 5,	.25	1.10	2.00
3¼ x 6 (Stereo),	.25	1.10	2.00
2¼ x 7 (No. 1 Panoram-Kodak),	.15	.80	1.50
5 x 7,	.35	2.00	3.50
3½ x 12 (No. 4 Panoram-Kodak),	.45	2.50	4.50

Brownie Dekko, one grade only, per pkg. 2 doz., 2¼ x 2¼, 15 cts.

MADE IN FOUR GRADES.

Carbon Matte,

Plain Matte,

Egg-Shell Matte,

Rough Matte.

Eastman's Dekko Developer Powders, per dozen,	\$.50
Do., per half dozen,	.25
Do., per pkg., 5 powders in hermetically sealed glass tubes,	.25

EASTMAN'S PHOTOGRAPHIC PAPERS—Cont.**EASTMAN'S SEPIA PAPER.***Packed in air-tight, sealed tubes.*

As simple to handle and much quicker than Blue Print paper. Especially desirable with negatives giving broad sketchy effects.

	2 Doz.		2 Doz.
2½ x 2½,	\$.15	4 x 5,	\$.20
2¼ x 3¼,15	3¼ x 6 (Stereo),20
2½ x 4¼,15	2¼ x 7,20
3½ x 3½,15		1 Doz.
3¼ x 4¼,15	5 x 7,20
3¼ x 5½,20	3½ x 12,20

EASTMAN'S "FERRO-PRUSSATE" PAPER.*Packed in air-tight, sealed tubes.*

This is not a cheap commercial "Blue Print" paper, but a paper made purposely for printing from the finest negatives with a view to retaining all their delicacy and detail.

Size.	Price per 2 doz.	Size.	Price per 2 doz.
2½ x 2½,	\$.16	3¼ x 5½,	\$.20
2¼ x 3¼,16	3¼ x 6 (Stereo),20
2½ x 4¼,16	2¼ x 7,20
3½ x 3½,16	5 x 7,35
3¼ x 4¼,16	3½ x 12,40
4 x 5,20		

EASTMAN'S W. D. PLATINUM PAPER.*Packed in air-tight, sealed tubes.*

A pure platinum paper, requiring only water development, without chemicals. Clears in water and acid. Simple to handle, yet produces effects equal in beauty to any photographic process.

Two Grades—"Smooth" and "Rough."

Size.	Price per Doz.	Size.	Price per Doz.
2¼ x 3¼,	\$.15	3¼ x 5½,	\$.30
2½ x 4¼,20	3¼ x 6 (Stereo),35
3½ x 3½,20	2½ x 7,30
3¼ x 4¼,25	5 x 7,60
4 x 5,35	3½ x 12,70

EASTMAN'S PHOTOGRAPHIC PAPERS—Cont.

EASTMAN'S PERMANENT BROMIDE PAPERS.

The amateur can readily make enlargements from his own negatives by the use of Eastman's Bromide Paper and the Bulls-Eye Enlarging Camera described below, or can improvise an enlarging apparatus. Illustrated Booklet, "Bromide Enlarging with a Kodak," 10c.

ROYAL, STANDARD, PLATINO, ENAMELED AND MATTE-ENAMEL.

PRICE LIST.

Size.	Per Doz.	Size.	Per Doz.
2 1/4 x 3 1/4	\$.15	8 x 10,	\$.80
3 1/4 x 4 1/415	10 x 12,	1.20
3 1/4 x 5 1/215	11 x 14,	1.60
4 x 5,25	14 x 17,	2.40
3 1/4 x 6 (Stereo),25	16 x 20,	3.20
5 x 7,35	18 x 22,	4.00
5 x 8,40	20 x 24,	4.80
6 1/2 x 8 1/2,60		

Other sizes in proportion.

Two Grades—Hard and Soft.

The Bromide Papers (except Royal) are made in two grades, "Hard" and "Soft." The "Hard" paper should be used for printing or enlarging by sunlight, while the "Soft" paper should be used for work with artificial light.

"Standard" is furnished in three weights: A, thin smooth—B, heavy smooth—C, heavy rough.

"Platino" is furnished in A, thin smooth, or C, heavy rough.

The "Royal" is furnished in "smooth" or "rough."

BULLS-EYE ENLARGING CAMERAS.

The Bulls-Eye Enlarging Camera is adapted to making 4 x 5 Bromide enlargements from 1 1/2 x 2 negatives, and 6 1/2 x 8 1/2 enlargements from 2 1/4 x 3 1/4 and 3 1/2 x 3 1/2 negatives.

Bulls-Eye Enlarging Camera, with single holder for paper,	\$6.00
Extra inside Kit to hold 4 x 5 paper,35

EASTMAN'S EMBOSSING BOARDS.

For giving plate sunk centers with 2 1/4 x 3 1/4, 2 1/2 x 4 1/4, 3 1/2 x 3 1/2, 3 1/4 x 4 1/4, 4 x 5 and 5 x 7 unmounted prints on matte surface papers. These boards provide in each case for suitable margin.

Price, each, for 3 1/4 x 4 1/4 or smaller,	\$.10
Price, each, for 4 x 5 or 5 x 7,15

When ordering always give size of prints to be used with.

Velox Paper.*Manufactured by Nepera Division.*

Velox prints in any light and requires no dark-room for development. Richness of the blacks and simplicity of manipulation, are Velox characteristics.

Velox is made in two varieties, "Regular" and "Special," each of which is made in a number of different surfaces which adapt the paper to negatives of different qualities.

The "Special" papers give softer results than the "Regular" papers, and are intended for negatives which have plenty of contrast, or even too much. With negatives which are deficient in contrast do not use the special papers. Instead of doing so, make your prints on the regular papers, which will tend to give more contrast to the weaker negatives. A negative must be judged by its contrast, not by its being thick or thin.

Size.	Doz.	½ Gross.	Gross.
2¼ x 3¼,	\$.15	\$.60	\$1.00
2½ x 4¼,15	.70	1.25
3½ x 3½,15	.80	1.50
3¼ x 4¼,15	.80	1.50
3¼ x 5½,15	.80	1.50
4 x 5,25	1.10	2.00
3¼ x 6 (Stereo),25	1.10	2.00
2¼ x 7 (No. 1 Panoram-Kodak),15	.80	1.50
5 x 7,35	2.00	3.50
3½ x 12 (No. 4 Panoram-Kodak),45	2.50	4.50

In "**Regular**" Velox.—"Carbon." Matt surface. For average negatives. "Rough." Rougher surface than "Carbon." For negatives which will give broad effects. "Glossy." For fine detail.

In "**Special**" Velox.—"Special Carbon." Same surface as "Regular Carbon." For same class of negatives as "Special Portrait," but having the Carbon tint.

"Special Portrait." Half Matt. For negatives with plenty of contrast and fine detail; particularly adapted for portrait work.

"Special Rough." Same as "Regular Rough" in effect but better for use with contrasty negatives. Where negatives are adapted for rough platinum it will give almost identical results.

"Special Glossy." For fine detail, the same as "Regular Glossy," but for contrasty negatives.

VELOX PAPER—Continued.

DOUBLE WEIGHT VELOX.

The Special Rough Velox may be had in Double Weight. This paper requires no mount and should be printed under a mat, thus giving white margin, with effect of a mounted photograph.

Price, 25 per cent. higher than above list.

VELOX POSTAL CARDS

may be sent through the mails by affixing stamp on the address side. Sensitized on the back and have a surface suitable for writing upon. They make delightful souvenirs for travelers to send to their friends. Owing to the ease of manipulation, one may readily print on Velox postal cards in the evening at one's hotel, and the following morning they may be written upon and mailed. They are especially advantageous in this respect to the touring amateur who has taken along his Kodak and Developing Machine.

PRICE.

Per doz.,	\$.20
Per gross,	2.00

VELOX DEVELOPERS.

PRICE.

Nepera Metol-Quinol Tubes, per box containing 5 tubes,	\$.75
Nepera Acid Fixing Powders, per box,15
Velox Amateur Printer (for gas or incandescent light),	2.00

EASTMAN'S ADJUSTABLE MASK PRINTING FRAME.

By means of flexible opaque masks, which are mounted on rollers at each edge of frame, the printing opening may be adjusted to any size or to any place on the negative. Does away entirely with the necessity of cutting opaque masks where white margin prints are wanted. Especially convenient in printing Velox postals.

May be used with 6½ x 8½ plate negatives or with film negatives of any smaller size. Splendidly made of hard wood and polished brass.

Price,	\$2.50
------------------	--------

Compliments of the Digitized Kodak Catalog Project: 1886 - 1941

Plates, Chemicals, Frames.

EASTMAN'S DRY PLATES.

Extra Rapid for Instantaneous Work.

	Per Doz.
3¼ x 3½ inches (for No. 2 Bullet and Bullet Special),	\$.35
3½ x 3½ inches,35
3¼ x 4¼ inches,45
4 x 5 inches,65
5 x 7 inches,	1.10

EASTMAN'S DOUBLE COATED NON-HALATION PLATES.

3¼ x 4¼ inches, per doz.,	\$.55
4 x 5 inches, per doz.,80
5 x 7 inches, per doz.,	1.40

LANTERN SLIDE PLATES, ETC.

Plates for making Lantern Slides, per dozen,	\$.70
Cover Glass for Lantern Slides, per dozen,35

CHEMICALS.

For Developing Machine Chemicals see page 49.

Eastman's Hydrochinon Developer Powders, per dozen,	\$.50
Do., per half dozen,25
Do., per pkg. 5 powders in sealed glass tubes,25
Eastman's Pyro Developer Powders, per dozen,50
Do., per half dozen,25
Do., per pkg. 5 powders in sealed glass tubes,25
Eastman's Dekko Developer Powders, per dozen,50
Do., per half dozen,25
Do., per pkg. 5 powders in sealed glass tubes,25
Hypo-Sulphite of Soda, pulverized, per pound,10
Bromide Potassium, per ounce,15
Citric Acid, 4 ounce bottle,30
Solio Toning Solution, per 8 ounce bottle,50
Solio Toning Solution in 4 ounce bottles as follows: 4 ounces Toning Solution (2oc. extra postpaid),30
Solio Hardener, per 8 ounce bottle,35

PRINTING FRAMES.

Eastman's 3½ x 3½, opens two-thirds,	\$.25
" 3¼ x 4¼, opens two-thirds,25
" 4 x 5, opens two-thirds,25
" 5 x 7, opens two-thirds,35
" 3½ x 12, for No. 4 Panoram-Kodak, opens in 3 sections,75
" 2¼ x 7, for No. 1 Panoram-Kodak, opens in 2 sections,30
Flexo Printing Frame, 4 x 5, opens two-thirds,20
Special Brownie Frame, for 2¼ x 2¼ Developing Paper only,10

EASTMAN'S FLASH SHEETS.

"Most Like Daylight."

The softest, cleanest flash medium, giving a broad, soft light. As these sheets are not instantaneous, they give the effect of a short time exposure under a slightly subdued light—not the glare of the ordinary flash-powder. They do not startle the subject, nor give a staring effect to the eyes.

PRICE.

No. 1, per pkg. of half doz. sheets,	\$.25
No. 2, per pkg. of half doz. sheets,40
No. 3, per pkg. of half doz. sheets,60

EASTMAN'S FILM CUTTING BOARDS.

For cutting up Cartridge Films for development. Hold paper and film securely. Simple and accurate. For Kodak Cartridges only.

Any Kodak size (except No. 3 A) up to and including 4 x 5.*	\$.25
5 x 7, for No. 5 Cartridge Kodak Spools,35

*Give exact designation of your instrument when ordering.

TRAYS.

Paper Developing Trays, for 4 x 5, each,	\$.10
Paper Developing Trays, for 5 x 7, each,15
Hard Rubber Trays, for 4 x 5, each,27
Hard Rubber Trays, for 5 x 7, each,56
"Bulls-Eye" Composition Trays, for 3 1/2 x 3 1/2, each,10
"Bulls-Eye" Composition Trays, for 4 x 5, each,12
"Bulls-Eye" Composition Trays, for 5 x 7, each,30
"Bulls-Eye" Composition Trays, 3 x 8 1/2,22
"Bulls-Eye" Composition Trays, 4 1/2 x 14,50

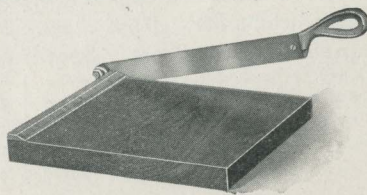
SPECIAL FERROTYPED PLATES.

10 x 14, Ferrotyped Plates, Light, each,	\$.15
10 x 14, Ferrotyped Plates, Heavy, each,20
18 x 24, Ferrotyped Plates, Heavy, each,75

KODAK TRIMMING BOARDS.

Made of hard wood, with natural finish, have fine quality steel blades and are fitted with rule.

No. 1, Capacity, 5 x 5 inches, \$.40
No. 2, Capacity, 7 x 7 inches, .60
Transparent Trimming Gauge, for either size, extra, .20



Kodak Mounts.**SERIES L, M, N, O.**

Plain felt surface. Square edges. L, Scotch Gray; M, Ivy Green; N, Carbon Black; O, Royal Brown.

For Prints.	Size Outside	Per 100.	Per Doz.	For Prints.	Size Outside.	Per 100.	Per Doz.
2¼ x 2¼	3¾ x 3¾	\$.20	\$.05	3½ x 3½	5 x 5	\$.50	\$ 1.10
1½ x 2	2½ x 3¾	.20	.05	3¼ x 4¼	4¾ x 5¾	.65	.10
1¾ x 2½	3¼ x 4	.30	.05	4 x 5	5½ x 6½	.65	.10
2¼ x 3¼	4 x 5	.40	.05	5 x 7	7 x 9	1.00	.15
2½ x 4¼	4¼ x 6	.50	.10				

SERIES H, I, J, K.

Plain felt surface. Beveled edges. H, Scotch Gray; I, Ivy Green; J, Carbon Black; K, Royal Brown.

For Prints.	Size Outside.	Per 100.	Per Doz.	For Prints.	Size Outside.	Per 100.	Per Doz.
1½ x 2	2½ x 3¾	\$.30	\$.05	3¼ x 4¼	4¾ x 5¾	\$.80	\$.15
1¾ x 2½	3¼ x 4	.55	.10	4 x 5	5½ x 6½	.90	.15
2¼ x 3¼	4 x 5	.55	.10	5 x 7	7 x 9	1.75	.25
2½ x 4¼	4¼ x 6	.80	.15	2¼ x 7	4 x 8¾	.90	.15
3½ x 3½	5 x 5	.80	.15	3½ x 12	5½ x 13¾	1.75	.25

BISMARCK.

Plate centre. Full embossed ornamental border design. Square edges. Furnished in Sage Green, Ash Gray or White. Specify color in order.

For Prints.	Size Outside.	Per 100.	Per Doz.	For Prints.	Size Outside.	Per 100.	Per Doz.
2¼ x 2¼	3¾ x 3¾	\$.40	\$.10	3½ x 3½	5 x 5	\$.65	\$.10
1½ x 2	3¾ x 3¾	.30	.05	3¼ x 4¼	4½ x 5½	.65	.10
1¾ x 2½	3 x 3¾	.35	.10	3¼ x 5½	5 x 7¼	.95	.15
2¼ x 3¼	3¾ x 4¾	.50	.10	4 x 5	5 ¹ / ₁₆ x 6 ¹ / ₁₆	.85	.15
2½ x 4¼	4 x 5¾	.45	.10	5 x 7	7 x 9	1.50	.25

WELLINGTON.

Narrow embossed ornamental design surrounding print. Three-quarter inch border. Bevel edges. Furnished in Olive Brown, Scotch Gray and Egyptian Black. Specify color in order.

For Prints.	Size Outside.	Per 100.	Per Doz.	For Prints.	Size Outside.	Per 100.	Per Doz.
1½ x 2	3¾ x 3¾	\$.40	\$.05	3¼ x 4¼	5 x 6	\$.90	\$.15
1¾ x 2½	3½ x 4	.50	.10	3¼ x 5½	5¼ x 7½	1.10	.20
2¼ x 3¼	4 x 5	.75	.10	4 x 5	5 ⁵ / ₁₆ x 6¾	1.00	.15
2½ x 4¼	4 x 6	.85	.15	5 x 7	7 x 9	1.75	.25
3½ x 3½	5 x 5	.85	.15				

KODAK MOUNTS—Continued.

WASHINGTON.

Narrow embossed dark brown design surrounding print. Three-quarter inch border. Bevel edges. Furnished in Queen's Gray only.

For Prints.	Size Outside.	Per 100.	Per Doz.	For Prints.	Size Outside.	Per 100.	Per Doz.
1 5/8 x 2 1/2	3 1/8 x 4	\$1.00	\$.15	3 1/4 x 4 1/4	5 x 6	\$1.25	\$.20
2 1/4 x 3 1/4	4 x 5	1.10	.15	3 1/4 x 5 1/2	5 x 7 1/4	1.40	.20
2 1/2 x 4 1/4	4 x 6	1.15	.20	4 x 5	5 5/10 x 6 3/8	1.35	.20
3 1/2 x 3 3/4	5 x 5	1.15	.20	5 x 7	7 x 9	2.75	.40

NAPOLEON.

Plain egg-shell surface, plate sunk center, wide margin, thin mount. Very artistic. Prints should be glued by corners or edges only. Furnished in Cream White and Black. Specify color in order.

For Prints.	Size Outside.	Per 100.	Per Doz.	For Prints.	Size Outside.	Per 100.	Per Doz.
1 5/8 x 2 1/2	4 3/8 x 5 1/2	\$1.10	\$.15	3 1/4 x 4 1/4	6 x 7 1/4	\$1.65	\$.25
2 1/4 x 3 1/4	5 1/4 x 6 1/4	1.30	.20	3 1/4 x 5 1/2	6 x 8 1/2	2.00	.30
2 1/2 x 4 1/4	5 1/2 x 7 1/4	1.50	.25	4 x 5	9 x 8	2.20	.35
3 1/2 x 3 3/4	6 1/2 x 6 1/2	1.60	.25	5 x 7	10 x 12	3.50	.50

KAISER.

A plain mount except for a simple beading surrounding print. Wide margins. Extra heavy stock. Beveled edges. Simple and handsome. Furnished in Cream White, Dawn Gray and Jet Black. Specify color in order.

For Prints.	Size Outside.	Per 100.	Per Doz.	For Prints.	Size Outside.	Per 100.	Per Doz.
1 5/8 x 2 1/2	4 5/8 x 5 1/2	\$2.00	\$.30	3 1/4 x 4 1/4	6 x 7 1/4	\$2.30	\$.35
2 1/4 x 3 1/4	5 1/4 x 6 1/4	2.20	.35	3 1/4 x 5 1/2	6 x 8 1/2	3.10	.45
2 1/2 x 4 1/4	5 1/2 x 7 1/4	2.30	.35	4 x 5	7 x 9	3.30	.50
3 1/2 x 3 3/4	6 1/2 x 8 1/2	2.30	.35	5 x 7	8 x 10	4.40	.70

Sundries.

Eastman's Photo Paste, per 3 ounce tube,	\$.15
Eastman's Photo Paste, per 5 ounce tube,25
Velvet Rubber Squeegees, 4½ inches, each,20
Velvet Rubber Squeegees, 6 inches, each,25
Velvet Rubber Squeegees, 8 inches, each,30
Kodak Push Pins, for pinning up film negatives, per box of 1 doz.,25
3½ x 3½ Glass for Printing Frames, each,05
3¼ x 4¼ Glass for Printing Frames, each,05
4 x 5 Glass for Printing Frames, each,05
5 x 7 Glass for Printing Frames, each,05
2¼ x 7 Glass for No. 1 Panoram-Kodak Printing Frames, each,05
4 x 13 Glass for No. 4 Panoram-Kodak Printing Frames, each,10
4 x 13 Felt Mats for No. 4 Panoram-Kodak Printing Frames, each,15
Eastman's Orange Candle Lamp,25
Silk Bolting Cloth, 18 x 20 squares, fine,	1.25
Silk Bolting Cloth, 18 x 20 squares, medium,	1.13
Silk Bolting Cloth, 18 x 20 squares, coarse,	1.00
Solio Thermometers, each,40
Kodak Print Rollers, two 6 inch rubber rollers, nickered steel frame,50
Flexo Print Roller, 4 inch rubber roller, black enameled steel frame,15

Enlargements.

EVERY amateur has among his negatives some that are well worth enlarging and framing. Our enlarging department contains only skilled operators, and we secure the very best results possible from every negative. Where the kind of paper is not specified we will make the enlargements upon the paper which, in our judgment, is best suited to the negative and the subject.

PRICE LIST.

No extra charge for Sepia Tones on Royal or Enameled Bromide Enlargements.

	Each.	Per Doz.
4¼ x 6½, Mounted on Card,	\$.35	\$3.00
6½ x 8½, " " "50	5.00
8 x 10, " " "75	—
10 x 12, " " "	1.00	—
11 x 14, " " "	1.25	—
14 x 17, " " "	1.50	—
Larger sizes in proportion.		
Lantern Slides,50	5.00

Condensed Kodak List.

FOLDING POCKET KODAKS Nos. 0, 1 AND 1A.

	No. 0 1½ x 2½	No. 1 2¼ x 3¼	No. 1A 2½ x 4¼
FOLDING POCKET KODAK (not loaded),	\$6.00	\$10.00	\$12.00
Transparent Film Cartridge, 12 exposures,25	.40	.50
Do., 6 exposures,15	.20	.25
Carrying Case with shoulder strap,	1.00	1.25	1.25
Clamp for carrying case on Bicycle Head,	—	.50	.50
†Kodak Portrait Attachment,50	.50	.50
*Developing, printing and mounting, 12 exposures,65	1.00	1.25
*Developing only, each,03	.04	.06
*Printing and mounting only, each,03½	.05	.07

FOLDING POCKET KODAKS Nos. 2, 3 AND 3A.

	No. 2 3½ x 3½	No. 3 3¼ x 4¼	No. 3A 3¼ x 5½
+FOLDING POCKET KODAK (not loaded),	\$15.00	\$17.50	\$20.00
Do., De Luxe (see page 31),	—	75.00	—
Transparent Film Cartridge, 12 exposures,60	.70	.40
Do., 6 exposures,30	.35	.30
Do., "Double-Two" Cartridge (4 exposures),20	.25	.30
Carrying Case with shoulder strap,	1.25	1.25	1.50
Clamp for carrying case on Bicycle Head,50	—	—
Pair of Clamps for carrying case on Bicycle Head,	—	1.00	—
†Kodak Portrait Attachment,50	.50	—
*Developing, printing and mounting, 12 exposures,	1.50	1.50	1.80
*Developing only, each,06	.06	.08
*Printing and mounting only, each,08	.08	.10
Glass Plate Adapter, with ground glass,	—	3.50	3.50
Single Plate Holders for same (No. 3A uses 3¼ x 4¼ plates),	—	.50	.50

BULLS-EYE AND FLEXO KODAKS.

	No. 2 3½ x 3½	No. 4 4 x 5
BULLS-EYE KODAK (not loaded),	\$8.00	\$12.00
FLEXO KODAK (not loaded),	5.00	—
Transparent Film Cartridge, 12 exposures,60	.90
Do., 6 exposures,30	.45
Do., "Double-Two" Cartridge (4 exposures),20	.30
*Developing, printing and mounting, 12 exposures,	1.50	1.80
*Developing only, each,06	.08
*Printing and mounting only, each,08	.10
†Black Sole Leather Carrying Case,	1.25	2.00
†Bicycle Carrying Case to clamp on head of machine, for No. 2 Bulls-Eye, Style A,	2.00	—
†Sole Leather Bicycle Carrying Case, for No. 2 Bulls-Eye, Style B,	1.50	—
†Kodak Portrait Attachment,50	—

*On orders for less than one dozen, 25 cents extra will be charged. Prints are always furnished mounted unless otherwise specified.

†For special lens and shutter equipments see pages 31, 34 and 52.

‡When ordering give exact designation of instrument to be used with.

CONDENSED KODAK LIST—Continued.

BULLET SPECIAL AND BULLS-EYE SPECIAL KODAKS.

	No. 2 Special 3½ x 3½	No. 4 Special 4 x 5
BULLET SPECIAL Kodak (not loaded),	\$18.00	\$22.50
BULLS-EYE SPECIAL Kodak (not loaded),	15.00	20.00
Transparent Film Cartridge, 12 exposures,60	.90
Do., 6 exposures,30	.45
Do., "Double-Two" Cartridge (4 exposures),20	.30
*Developing, printing and mounting 12 ex.,	1.50	1.80
*Developing only, each,06	.08
*Printing and mounting only, each,08	.10
‡Black Sole Leather Carrying Case for Bulls-Eye Special,	1.25	2.00
‡Black Sole Leather Carrying Case for Bullet Special,	1.25	2.25
‡Bicycle Carrying Case to clamp on head of machine, Style A,	2.00	—
‡Sole Leather Bicycle Carrying Case, to attach under saddle, Style B,	1.50	—
‡Double Glass Plate Holders for Bullet Special (3¼ x 3½ inches, for No. 2),	1.00	1.00
Leather Carrying Case for 3 Double Plate Holders, for Bullet Special,75	1.00
Do., for 6 Double Plate Holders,	1.00	1.50
‡Kodak Portrait Attachment,50	—

CARTRIDGE KODAKS.

	No. 3 3¼ x 4¼	No. 4 4 x 5	No. 5 5 x 7
CARTRIDGE Kodak, with Rapid Rectilinear Lens and Triple Action Pneumatic Shutter (not loaded),	\$20.00	\$25.00	\$35.00
For Special Lens and Shutter Equipment see page 52.			
Wide Angle Lens for Cartridge Kodak,	5.00	5.00	7.50
Transparent Film Cartridge, 12 exposures,70	.90	1.60
Do., 6 exposures,35	.45	.80
Do., "Double-Two" Cartridge (4 exposures),25	.30	.55
Black Sole Leather Carrying Case with shoulder strap,	1.50	2.00	2.50
Do., to hold camera with plate adapter attached,	1.75	2.50	3.00
*Developing, printing and mounting (12 exposures),	1.50	1.80	2.40
*Developing only, each,06	.08	.10
*Printing and mounting only, each,08	.10	.12½
Bicycle Carrying Case,	2.25	2.50	3.25
Glass Plate Adapter, with ground glass,	2.00	2.50	3.00
Double Glass Plate Holders, each,	1.00	1.00	1.25
Black Sole Leather Carrying Case, to hold 3 double plate holders and focusing glass,	1.00	1.00	1.50
Do., to hold 6 double plate holders and focusing glass,	1.50	1.50	2.00
Black Sole Leather Carrying Case, to hold glass plate adapter, ground glass and 6 double plate holders,	—	2.50	3.00
Black Sole Leather Carrying Case, to hold Cartridge Kodak and adapter, 4 double plate holders, focusing glass and 3 Film Cartridges,	2.75	3.50	4.50
Lens Cap,25	.25	.25

*On orders for less than one dozen, 25 cents extra will be charged. Prints are always furnished mounted unless otherwise specified.

†In ordering state whether for Bullet Special or Bulls-Eye Special. In ordering for No. 4 Bullet Special, specify "Model C."

CONDENSED KODAK LIST—Continued.

PANORAM-KODAKS.

	No. 1	No. 4
PANORAM-KODAK (not loaded),	$2\frac{1}{4} \times 7$ \$10.00	$3\frac{1}{2} \times 12$ \$20.00
†Transparent Film Cartridge, (No. 1, 6 exposures; No. 4, 5 ex.),40	.90
†Do., No. 1, 3 exposures; No. 4, 2 exposures,20	.45
Black Sole Leather Carrying Case with shoulder strap,	1.75	2.00
*Developing, printing and mounting, 6 exposures No. 1, or 5 exposures No. 4,	1.00	1.75
*Developing only, each,08	.18
*Printing and mounting only, each,10	.20

*On orders for less than 6 pictures No. 1, or 5 pictures No. 4, 25 cents extra will be charged. Prints are always furnished mounted when not otherwise specified in order.
 †No. 1 uses No. 1 Folding Pocket Kodak Film, No. 4 uses No. 4 Bulls-Eye Film.

No. 2 STEREO KODAKS.

NO. 2 STEREO KODAK for standard size ($3\frac{1}{4} \times 6$) Stereo pictures (not loaded),	\$15.00
Transparent Film Cartridge, 6 Stereo or 12 $3\frac{1}{2} \times 3\frac{1}{2}$ exposures,60
Do., 3 Stereo or 6 $3\frac{1}{2} \times 3\frac{1}{2}$ exposures,30
Do., 2 Stereo or 4 ("Double-Two") $3\frac{1}{2} \times 3\frac{1}{2}$ exposures,20
Black Sole Leather Carrying Case with shoulder strap,	2.00
*Developing, printing and mounting, per pair,25
*Developing only, per pair,12
*Printing and mounting only, per pair,16

*On orders for developing and printing less than one-half dozen, 25 cents extra will be charged. Prints are always furnished mounted unless otherwise ordered.

BROWNIE CAMERAS.

	No. 1	No. 2
BROWNIE CAMERA (not loaded),	$2\frac{1}{4} \times 2\frac{1}{4}$ \$1.00	$2\frac{1}{4} \times 3\frac{1}{4}$ \$2.00
Transparent Film Cartridge, 6 exposures15	.20
Imitation Leather Carrying Case,50	.75
*Developing, printing and mounting, per roll, six exposures,40	.50
*Developing only, each,03	.04
*Printing and mounting only, each,04	.05

*On orders for developing or printing less than one-half dozen, 25 cents extra will be charged.

Specimen Prints.

A SPECIMEN photograph made with any Kodak (not larger than 4 x 5) will be sent to any address in the United States upon receipt of 4 cents in postage stamps; No. 5 Cartridge Kodak specimens, 8 cents; Stereo specimens, 8 cents; No. 4 Panoram-Kodak specimens, 20 cents.

Developing and Printing.

AS manufacturers of the Kodaks and film, and finally of the paper upon which the prints are made, it is to our especial interest to give our customers the best possible results from every negative. To this end we employ only the most skillful operators in our developing and printing departments, thus ensuring the highest quality of work to those Kodakers who send to us to "*do the rest.*"

Tourists.

TRAVELERS can always obtain fresh supplies of film on short notice at any one of the following addresses :

LONDON—Kodak, Limited, 43 Clerkenwell Road, E. C.; 60 Cheapside, E. C.; 115 Oxford St., W.; 171-173 Regent St., W.; 59 Brompton Road, S. W.; 40 Strand, W. C.

LIVERPOOL—Kodak, Limited, 96 Bold St.

GLASGOW—Kodak, Limited, 72 and 74 Buchanan St.

PARIS—Eastman Kodak Société Anonyme Française, Avenue de l'Opera, 5. Place Vendôme, 4.

LYONS—Eastman Kodak Société Anonyme Française, 26 and 28 Rue de la Republique.

BERLIN—Kodak Gesellschaft, m. b. H., Friedrich Strasse, 16; Friedrich Strasse, 191.

BRUSSELS—Kodak, 36 Rue du Fossé aux Loups.

VIENNA—Kodak, Graben 29.

ST. PETERSBURG—Kodak, Bolschaja Konjuschennaja 1.

MOSCOW—Kodak, Petrovka, Dom Michalkoff.

MILAN—Kodak, 10 Via Vittore Pisani.

MELBOURNE—Kodak, 284 Collins St.

TORONTO—Canadian Kodak Co., 588-592 King St., West.

Terms.

THE prices in this catalogue are strictly net, except to regular dealers who carry our goods in stock.

For the convenience of our customers we recommend that they make their purchases from a dealer in photographic goods, as by so doing they can save both time and express charges.

EASTMAN KODAK CO.
Rochester, N. Y.



F. A. STEUBER
Le Roy, N. Y.