



Kodak

The Digitized Kodak Catalog Project (1886 - 1941): A Very Brief History

Most camera collectors at some point in their collecting careers pass through a Kodak phase - some never come out of it. And if there ever was one name that came to be associated with both cameras and collecting, it was Kodak.

George Eastman received his first patent (for coating dry plates) and bought his first manufacturing facility in 1880, and in 1881 he started the Eastman Dry Plate Company. In 1886 he received a patent for the near-mythical Eastman Detective Camera, but it wasn't until 1888 that the first camera bearing the name "Kodak" was introduced.

One of the nice things about collecting Kodak is that the product line is pretty well known, and because the company produced annual catalogs for many years, collectors can be reasonably sure of what they're looking at, when it was made, the variations and so on - presuming that they have access to either the appropriate catalog, or a number of the many books which document Kodak, each to some greater or lesser extent.

But what would be really nice would be to have a complete set of Kodak catalogs in an easily accessible form and readily available. And since the advent of portable computing devices (PC, Macintosh, etc.) that's been possible - except for the difficulty of assembling a complete set of Kodak catalogs in one spot and then scanning them and making the results available.

The idea of digitizing a complete set of Kodak catalogs has kicked around the collecting community for many years. It's been proposed on a number of online forums, during meetings of various photohistory groups, and for years there have been many incomplete "Kodak CDs" on eBay but at best, they only contained a few catalogs - whatever the owner had available. But assembling a complete set of catalogs, then scanning and processing perhaps 3,000 to 4,000 pages, was a daunting task - if not completely overwhelming - and nothing ever came of it.

Until now.

In early 2010, the idea came up again, but this time we - "we" as in "the collecting community" - were lucky. A number of collectors were willing to loan their catalogs to this project and a couple of insane - wait, let's call them "dedicated" - dedicated enthusiasts - neither of whom collected Kodak, but both of whom enjoyed the challenge of such a project - were willing to put in the time and effort to scan and pull together the entire set of catalogs into a full-blown Kodak Catalog Digital Library.

Our initial objective was to include just the annual amateur catalogs, but it turns out that many cameras only appear in certain professional and specialty catalogs. We included as many of those as we could obtain so that almost every Kodak camera made in the US, Canada and Europe, would be documented - at least up to about 1941. After that, it becomes much more difficult as Kodak stopped producing annual catalogs as their product line became increasingly more diversified.

However, even with the additional "non-amateur" catalogs, we weren't completely successful in illustrating "every" camera Kodak ever made. There are an elusive few that might appear in specialty catalogs that we simply couldn't track down. If you can't find one of those odd cameras, that's no doubt why. We may do a revision at some point in the future if someone is willing to loan us a catalog that includes a camera that isn't already recorded.

In this project, a total of 67 catalogs were used from 1886 through 1941 including a number of professional and dealer catalogs, and in some years, two or even three different catalogs to cover all the bases. With the cooperation of a number of dedicated collectors, we were able to pull together all those catalogs and in June 2010, the project started in earnest.

By November 2010, we had scanned everything we needed and eventually all 67 catalogs were then reassembled as image folders and converted to the universally accepted PDF format and finally, converted into individually searchable PDFs which could then be searched globally as a collection.

For those of you interested in the statistics: about 200 hours of scanning time (we never want to hear that sound again), 67 catalogs and 3,908 page scans - which generated 7,917 original and processed images - and 11.4 GB of disk space. Additionally, another 100+ hours of technical development time was needed to convert the digital catalogues into a fully searchable "knowledgebase" that could be launched from most any standard web browser.

The overwhelming number of catalogs was loaned to us by that most remarkable of Kodak collectors, Charlie Kamerman of Eagle Creek, Oregon. Without Charlie, it's very doubtful that this project could even have been attempted.

But as it turned out, even Charlie didn't have all the publications that were needed, but he was able to track down the five that he lacked and was able to secure either a copy or high resolution images that we could work with. And so, our thanks to the contributors of the catalogs and scans that we used:

Charlie Kamerman for the vast majority of catalogs used and all his help,
Steve Shohet for loaning a variety of test catalogs,
Ryerson University (Toronto) for the 1886 Eastman Catalog
George Layne for the 1890 New Kodaks Catalog,
Mike Kessler for the 1891 Dealer Display Catalog,
Ralph London for the 1893 UK Catalog,
Michael Pritchard for the 1897 UK Catalog.

The digital side of the project - also known as "all of the work" - was done by Rob Niederman of Medina, Minnesota, and Milan Zahorcak of Tualatin, Oregon. Remarkably we're still friends and in a few years, we'll probably be able to talk about this project rationally.

And there you have it, a more-or-less done deal. We're fairly sure that it isn't quite perfect, and expect there will be some carping about something or other; but all-in-all, we believe this to be a pretty good product and can now move on to something else.

Our thanks to all of those involved.

Rob Niederman
Milan Zahorcak

Fall, 2011

Compliments of the Digitized Kodak Catalog Project: 1886 - 1941

14526



KODAK

K O D A K S
AND KODAK SUPPLIES

1908

EASTMAN KODAK COMPANY
ROCHESTER, N. Y. *The Kodak City*

“IF IT ISN'T AN EASTMAN;
IT ISN'T A KODAK”

As You Choose

IT isn't a question of amateur photography.

It is simply a question of whether or not you would like pictures of the things that you are interested in. Your travels, your summer vacation, your sports, your friends, your children — would you like pictures of all these — pictures which you yourself have taken from your own viewpoint and involving your own personality? If you would, the answer is — Kodak.

Amateur photography is worth while for its own sake. There is inspiration and education in the work. There is genuine pleasure for him who has learned the simple technique of straight photography; there is the joy of mastery for him who so understands its subtleties as to bend the processes to his will. For art's sake, and for the triumphs that follow, there is a fascination in pictorial work — fascination in comparing the results of one's efforts with the work of others. In competitive work for Salon honors and for prizes, there is the keen zest of friendly rivalry.

Amateur photography is a hobby worth riding for its own sake, but after all its broad use is in the application to other hobbies. It is not everyone that cares to go into its secrets, but to get good pictures requires no intimate knowledge of photography. The developing and printing of the pictures is now so simple that from start to finish a child may master it. But if you care not to go even that far, if it is just the pictures you want — if photographic work appeals not at all:

You press the button;

We do the rest.

The Bother Left Out

KODAK means photography with the bother left out. But it means more than that, it means better results than were obtained under the old bothersome methods.

The dark-room has gone. The Kodak cartridge first freed the camerist from the necessity of going to the dark room to load and unload. Later it made possible the present daylight methods of Film Tank development. Amateurs everywhere welcomed a system that relieved them of dark-room troubles. They were doubly appreciative when they found that in the Kodak Film Tank they not only had a convenience but a method of developing film that gave better results than they had been able to obtain in the old way.

At first the skeptics were slow to believe, but it was easily demonstrated that films developed at a certain temperature in a certain developer for a certain length of time gave negatives of more uniform and of better quality, even with greatly varying exposures on the same strip, than could be obtained by the tentative hand development plan in the dark room. So thoroughly has this fact been established that very many of the best workers, both professional and amateur, have now adopted the Tank system for the development of plates, even though it does not free them entirely from the dark room. (The Plate Tank, unlike the Film Tank, is loaded in the dark-room.) This, therefore, is ample proof that it was the *quality* of Tank development work rather than the mere convenience that converted them to the time and temperature method as opposed to tentative hand development.

The daylight Kodak Film cartridge is the basis of the

The Bother Left Out—Continued

present-day Kodak simplicity, but along with it have come improvements in lens and in shutter, and in focusing mechanism and reductions in bulk, until to-day the complete camera, with every useful feature that any reasonable man could ask for, folds into compact form and slips into the pocket.

But advancement has by no means been confined to the camera and to the methods of film development. Velox has done away with the necessity for sunlight in printing, just as the Kodak Film Tank did away with the dark room. Velox prints in a few seconds by gas or lamp-light and yet can be handled safely in a subdued light a few feet away from the lamp. In every Kodak process simplicity is the keynote, and the net result is not only more pictures but better pictures.

And even for those who do not care to do their own finishing, who wish only to press the button and let another do the rest, these advances are important. Machine or Tank development, as now largely used by professional finishers, means a higher average of quality, and Velox means prompt delivery of the prints, for there is no longer the possibility, or should we say probability, of delays occasioned by cloudy days.

Convenience, simplicity, freedom from annoying complications in either the picture taking or the picture making, but with quality all the way through — these are the Kodak characteristics.

Kodak means photography with the bother left out.

Our Film Advantage

WE have been making film for more than twenty-two years. In every one of those years we have learned something new. In every one of those years we have added to our equipment, have perfected some improvement in the process of manufacture, have accomplished something toward the perfecting of the product. One of the greatest difficulties in film making is the securing of reliable basic materials. This difficulty has been overcome in our plant, and we believe in no other, by manufacturing these basic materials in that plant. For instance, we nitrate our own cotton for the film base; we nitrate our own silver for the emulsion. We go further, we not only make the nitric acid with which the cotton and silver are treated, but we even make the sulphuric acid from which, in combination with nitre, the nitric acid is made. An idea of the thoroughness with which we have gone into this matter of the making of perfect basic materials may be gained from the fact that the installation of this plant necessitated a stack 366 feet in height, the highest in America, to carry off the acid fumes. Whatever our film makers require, we supply.

To perfect equipment and their years of experience, our film makers have the added advantage of access to the formulæ of the chemists who make the best dry plates in the world. Kodak films have in them the combined knowledge of the most expert film makers and the most expert plate makers.

Be sure it's Kodak Film with which you load your Kodak

EASTMAN KODAK COMPANY.

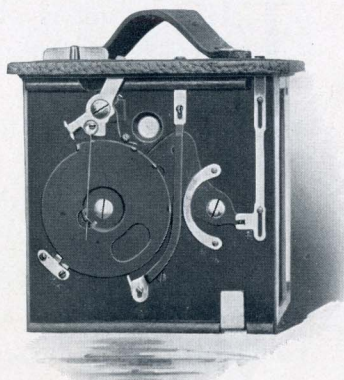
Automatic Shutters

EASTMAN ROTARY SHUTTER

THIS shutter is automatic in action and always set, the exposure is made by throwing a lever alternately to left and right.

The adjustments for time exposures and the three diaphragm openings are similarly controlled.

Supplied on the Nos. 2 and 3 Bull's-eye, No. 2 Flexo, No. 3B Quick Focus Kodak, and on the Nos. 1, 2, and 2A Brownies.



POCKET AUTOMATIC SHUTTER

THE new star-shaped opening in this shutter greatly increases its efficiency, by giving increased illumination with the same duration of exposure.

Automatic in action, one pressure makes the snap, and when set at "B," pressure on the lever opens the shutter, which closes when released.

When set for time exposure, one pressure opens and another closes the shutter.

Fitted with iris diaphragm stops.

Supplied on the Nos. 1 and 1A Folding Pocket Kodaks, and the No. 2 Folding Pocket Brownie.



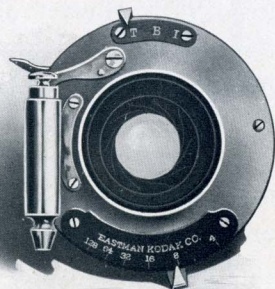
Automatic Shutters—Continued

F. P. K. AUTOMATIC SHUTTER

THIS shutter is always set. Pressure on release makes instantaneous exposure of $\frac{1}{50}$ of a second. Adjustments for “bulb” and “time” exposures.

Fitted with iris diaphragm stops, Nos. 4 to 128.

Supplied on the No. 1A Special, No. 2, No. 3, 3A and No. 4 Folding Pocket Kodaks, and without pneumatic release on the No. 3 Folding Brownie.



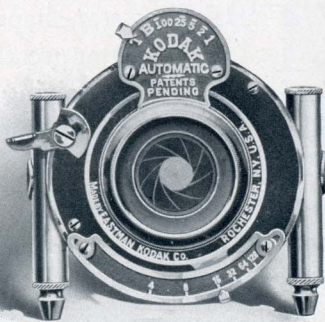
KODAK AUTOMATIC SHUTTER

THIS shutter is automatic in action and is beautifully finished.

Carefully adjusted for automatic exposures from $\frac{1}{100}$ of a second to one second. “Bulb” (opens when bulb is pressed and closes when it is released) and “time” exposures may also be made.

Iris diaphragm stops from Nos. 4 to 128.

Regularly supplied on the No. 4 Screen Focus Kodak, and as a special equipment on the Nos. 1A Special, 3, 3A, and No. 4 Folding Pocket Kodaks.



Automatic Shutters—Continued

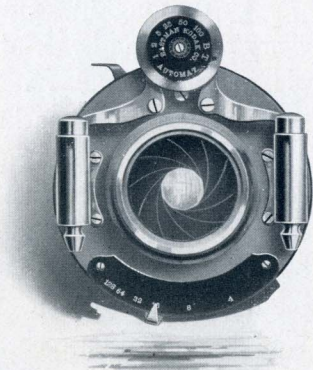
B. & L. AUTOMATIC SHUTTER

A FIRST-CLASS shutter in every respect.

Automatic in action, and may be operated with either pneumatic or finger release. Automatic exposure from $\frac{1}{100}$ of a second to one second; also “bulb” and “time” adjustments.

Iris diaphragm stops, 4 to 128.

Regularly supplied on the No. 4A Folding Kodak, and as a special equipment on the Nos. 1A Special, 3, 3A, and 4 Folding Pocket Kodaks.

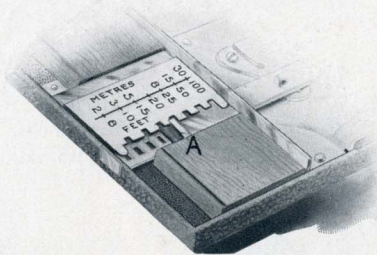


AUTOMATIC FOCUSING LOCK

A SIMPLE device for bringing the Kodak to a quick and certain focus.

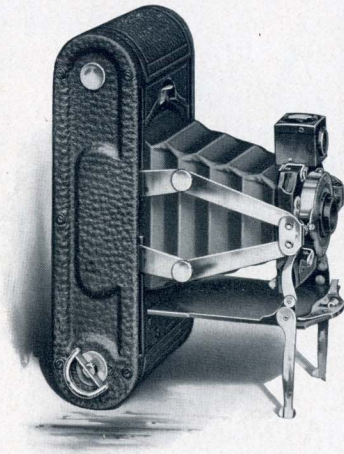
To operate, set lever “A” in slot marked for distance desired, then pull camera front to limit of motion, the front then catches, and the camera is in focus for the number of feet for which you have set the catch.

Supplied with all focusing Pocket Kodaks and the Folding Brownies. This lock does not interfere with the use of the regular focusing scale.



No. 1 Folding Pocket Kodak

A DAINTY little instrument thoroughly practical in every respect and exceedingly simple in operation. When closed, this camera is remarkably compact, and all adjustments are concealed, as the bed folds automatically over the front board and bellows, making it an ideal instrument for the tourist. With the Kodak portrait attachment good sized bust portraits may be made. When making vertical time exposures, the bed is supported by two standards which swing up out of the way when the camera is used for snap shots.



The camera body is made of aluminum, and covered with fine quality black seal grain leather. Full nickeled fittings.

IN DETAIL For rectangular pictures, $2\frac{1}{4} \times 3\frac{1}{4}$ inches. Capacity, 12 exposures without reloading. Size of Kodak, $6\frac{3}{4} \times 3\frac{1}{2} \times 1\frac{5}{8}$ inches. Weight, 16 ounces. Lens, Meniscus Achromatic, fixed 4-inch focus. Shutter, Pocket Automatic. (See page 7.) Brilliant reversible finder.

THE PRICE

No. 1 Folding Pocket Kodak, with Meniscus Achromatic Lens,	
Pocket Automatic Shutter,	\$10.00
Black Sole Leather Carrying Case, with shoulder strap,	1.25
N. C. Film Cartridge, 12 exposures, $2\frac{1}{4} \times 3\frac{1}{4}$,40
Ditto, 6 exposures,20
Kodak Portrait Attachment,50

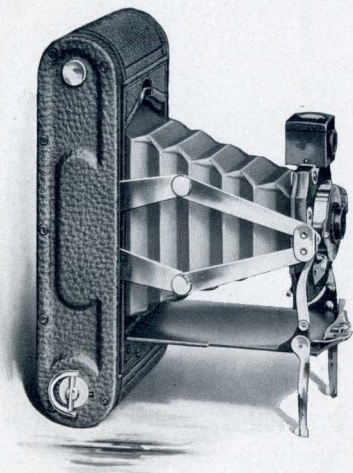


No. 1A Folding Pocket Kodak

THIS camera is identical with the No. 1, except as to size, as it takes pictures $2\frac{1}{2} \times 4\frac{1}{4}$ inches. Aside from its simplicity and ease in manipulation, the amateur will particularly appreciate the shape of the picture made with this instrument, long in proportion to the width, splendidly proportioned for artistic composition. It is especially adapted to landscape views when the instrument is used horizontally.

For full and three-quarter length portraits, the shape is ideal when the camera is used vertically.

Camera body made of aluminum, covered with fine seal grain leather, all fittings nicked.



IN DETAIL For rectangular pictures, $2\frac{1}{2} \times 4\frac{1}{4}$ inches. Capacity, 12 exposures without reloading. Size of Kodak, $7\frac{3}{4} \times 3\frac{7}{8} \times 1\frac{3}{4}$ inches. Weight, 20 ounces. Lens, Meniscus Achromatic, fixed 5-inch focus. Shutter, Pocket Automatic. (See page 7.) Brilliant reversible finder.

THE PRICE

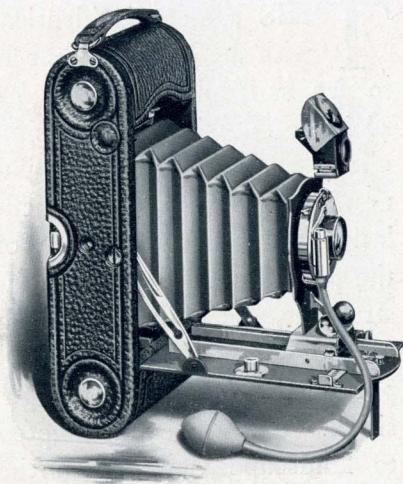
No. 1A Folding Pocket Kodak, Meniscus Achromatic Lens,	
Pocket Automatic Shutter,	\$12.00
Black Sole Leather Carrying Case, with shoulder strap,	1.25
N. C. Film Cartridge, 12 exposures, $2\frac{1}{2} \times 4\frac{1}{4}$,50
Ditto, 6 exposures,25
Kodak Portrait Attachment,50



No. 1A F. P. Kodak Special

THIS, the latest addition to the Pocket Kodak family, is a marvel of compactness. Simple enough for the absolute novice, it still embraces every feature required by the pictorialist.

There has never before been so much quality put into so small a camera—it combines the simplicity of the original No. 1A with absolutely the highest grade lens equipment. By means of the automatic focusing lock it may be used as simply as the fixed focus No. 1A, on the other hand the finest adjustments may be brought into play when desired.



IN DETAIL For rectangular pictures, $2\frac{1}{2} \times 4\frac{1}{4}$ inches. Capacity, 12 exposures without reloading. Size of Kodak, $8 \times 2 \times 3\frac{3}{4}$ inches. Weight, 23 ounces. Lens, Double Combination, Rapid Rectilinear, Speed, $f. 8$, focal length, 5 inches. Shutter, F. P. K. Automatic. (See page 8.) Automatic focusing lock. Two Tripod Sockets. Brilliant reversible finder.

THE PRICE

No. 1A Folding Pocket Kodak Special, R. R. Lens, F. P. K. Automatic Shutter,	\$15.00
Ditto, with No. 1 B. & L. Automatic Shutter and B. & L. Zeiss Tessar Lens, Series II B, No. 4, $f. 6.3$,	46.90
Ditto, with B. & L. Automatic Shutter and Isostigmatar Lens, Series II, No. 3A, $f. 6.3$,	35.35
Black Sole Leather Carrying Case, with shoulder strap,	1.25
N. C. Film Cartridge, 12 exposures, $2\frac{1}{2} \times 4\frac{1}{4}$,50
Ditto, 6 exposures,25
Kodak Portrait Attachment,50
Ready, May 15th.	

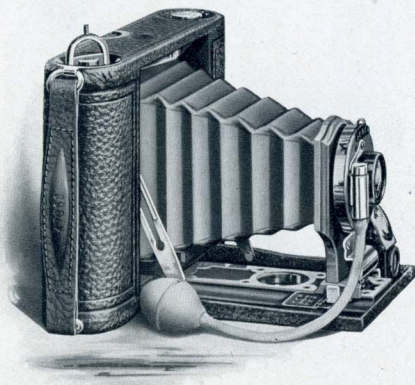


No. 2 Folding Pocket Kodak

IN the No. 2 Folding Pocket Kodak we have adapted the popular $3\frac{1}{2} \times 3\frac{1}{2}$ size to a pocket instrument, slipping easily into an ordinary coat pocket.

It is exceedingly light and compact and has the advantage that it may be either used as a fixed focus or as a focusing camera as desired. Simple in manipulation and taking a square picture, it is at the same time adapted to a wide range of work and will produce most excellent results even in the hands of the inexperienced.

Camera body made of aluminum, covered with finest quality seal grain leather, nickered fittings.



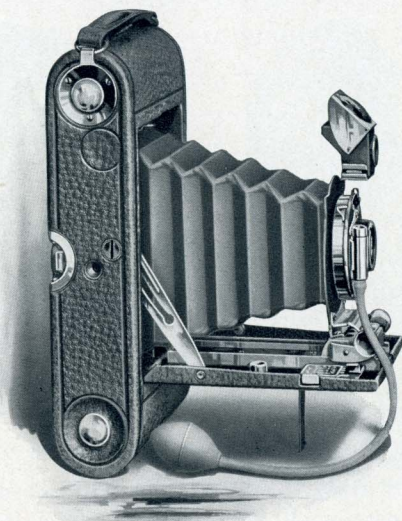
IN DETAIL For square pictures, $3\frac{1}{2} \times 3\frac{1}{2}$ inches. Capacity, 12 exposures without reloading. Size of Kodak, $6\frac{3}{4} \times 4\frac{1}{2} \times 1\frac{1}{2}$ inches. Weight, 18 ounces. Lens, Double Combination, Rapid Rectilinear, $4\frac{1}{4}$ -inch focus. Shutter, F. P. K. Automatic. (See page 8.) Automatic focusing lock. Finder. Socket for Tripod Screw.

THE PRICE



No. 2 Folding Pocket Kodak, R. R. Lens, F. P. K. Automatic Shutter,	\$15.00
Black Sole Leather Carrying Case, with shoulder strap,	1.25
N. C. Film Cartridge, 12 exposures, $3\frac{1}{2} \times 3\frac{1}{2}$,60
Ditto, 6 exposures,30
Ditto, "Double-Two" Cartridge, 4 exposures,20
Kodak Portrait Attachment,50

No. 3 Folding Pocket Kodak



IN DETAIL For rectangular pictures, $3\frac{1}{4} \times 4\frac{1}{4}$ inches. Capacity, 12 exposures without reloading. Size of Kodak, $7\frac{1}{2} \times 4\frac{1}{2} \times 1\frac{5}{8}$ inches. Weight, 23 ounces. Lens, Double Combination, Rapid Rectilinear, Speed, *f*. 8, focal length, 5 inches. Shutter, F. P. K. Automatic. (See page 8.) Two Tripod Sockets. Brilliant reversible finder with hood. Automatic focusing lock.

THE PRICE

- * No. 3 F. P. Kodak, R. R. Lens, F. P. K. Auto. Shutter, . \$17 50
- * Ditto, with Kodak Automatic Shutter, 22.50
- * Ditto, with Volute Shutter and B. & L. Zeiss Tessar Lens,
Series II B, No. 4, *f*. 6.3, 63.70
- * Ditto, with B. & L. Automatic Shutter, and Isostigmat
Lens, Series II, No. 3A, *f*. 6.3, 37.85
- Black Sole Leather Carrying Case, with shoulder strap, . . . 1.25
- Glass Plate Adapter, $3\frac{1}{4} \times 4\frac{1}{4}$, with ground glass, for use with
glass plates, 3.50
- Single Glass Plate Holder, $3\frac{1}{4} \times 4\frac{1}{4}$,50
- N. C. Film Cartridge, 12 exposures, $3\frac{1}{4} \times 4\frac{1}{4}$,70
- Ditto, 6 exposures,35
- Ditto, "Double-Two" Cartridge, 4 exposures,25
- Kodak Portrait Attachment,50



* Add one dollar if Rising and Sliding Front is desired.

No. 3 F. P. Kodak—Continued

SUFFICIENTLY light and compact to be carried without inconvenience in a coat pocket, this instrument is thoroughly practical in every respect for the most serious work. Every feature has been designed not only to secure lightness and strength, but for the accurate and perfect performance of its special duties as well. The proportions of the pictures it takes, $3\frac{1}{4} \times 4\frac{1}{4}$ inches, are exceedingly happy for pictorial composition, and are also exactly suited to the making of lantern slides by contact. Fitted with very rapid rectilinear lenses, and the reliable F. P. K. Automatic Shutter, which works with either bulb or finger release, and equipped with the automatic focusing lock, this instrument is a marvel of convenience. A rising and sliding front, a great convenience in architectural work, will be supplied at an extra charge of one dollar. Though generally used as a hand camera, it may be used with a tripod, either for vertical or horizontal pictures, a most decided advantage when photographing interiors, and in portrait work.

A simple adapter, taking the place of the regular back, and attached instantly, permits the use of dry plates. This attachment has a ground glass for focusing and uses aluminum plate holders. The camera is made of aluminum, covered with fine black seal grain leather, and is beautifully finished in every detail.



SHOWING RISING FRONT AND
KODAK AUTOMATIC SHUTTER

No. 3A Folding Pocket Kodak



IN DETAIL For rectangular pictures, $3\frac{1}{4} \times 5\frac{1}{2}$ inches. Capacity, 10 exposures without reloading. Size of Kodak, $9\frac{1}{2} \times 4\frac{3}{4} \times 1\frac{1}{8}$ inches. Weight, 41 ounces. Lens, Double Combination, Rapid Rectilinear, Speed, $f. 8$, focal length, $6\frac{1}{2}$ inches. Shutter, F. P. K. Automatic. (See page 8.) Two Tripod Sockets. Brilliant reversible finder with hood. Automatic focusing lock.

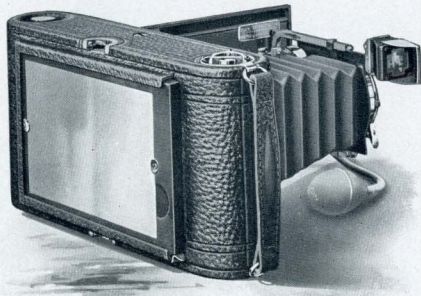
THE PRICE

No. 3A F. P. Kodak, R. R. Lens, F. P. K. Auto. Shutter,	\$20.00
Ditto, with Kodak Automatic Shutter,	25.00
Ditto, with Volute Shutter and B. & L. Zeiss Tessar Lens, Series II B, No. 5K, $f. 6.3$,	78.25
Ditto, with B. & L. Automatic Shutter and Isostigmatar Lens, Series II, No. 4A, $f. 6.3$,	46.45
Black Sole Leather Carrying Case, with shoulder strap,	1.50
Combination Back, for use with glass plates or films,	3.50
Double Glass Plate Holders, $3\frac{1}{4} \times 5\frac{1}{2}$, each,	1.00
N. C. Film Cartridge, 10 exposures, $3\frac{1}{4} \times 5\frac{1}{2}$,70
Ditto, 6 exposures,40
Ditto, "Double-Two" Cartridge, 4 exposures,30
Kodak Portrait Attachment,50



No. 3A F. P. Kodak — Continued

A REMARKABLY popular and satisfactory instrument; fully equipped in every respect for serious work, it is yet so simple to understand and operate as to be readily and effectively handled by even the inexperienced.



SHOWING COMBINATION BACK, WITH FOCUSING SCREEN

In addition to its simplicity and completeness, the 3A Folding Pocket Kodak is wonderfully light and compact and may be easily carried in an ordinary topcoat pocket.

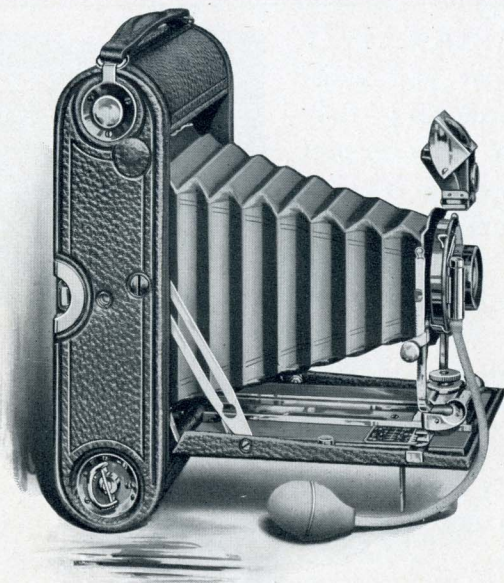
The size and proportions of the picture taken with the 3A, $3\frac{1}{4} \times 5\frac{1}{2}$ inches, are original with this instrument, and greatly increase its practical utility, being peculiarly well adapted to broad landscape views when the camera is used horizontally and equally effective for full and three-quarter length portraits when used vertically. With the Kodak Portrait Attachment large-size bust portraits may be made.

The camera may be used with a tripod, either for vertical or horizontal pictures, two tripod sockets being provided for the purpose — a great convenience when making time exposures.

The rising, falling, and sliding front, and the automatic focusing lock are part of the regular equipment.

A combination back, taking the place of the regular back, and fitted with ground-glass focusing screen, permits the use of glass plates. Double plate holders are used.

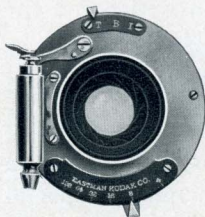
No. 4 Folding Pocket Kodak



IN DETAIL For rectangular pictures, 4 x 5 inches. Capacity, 12 exposures without reloading. Size of Kodak, 9 x 5 $\frac{3}{4}$ x 2 $\frac{1}{4}$ inches. Weight, 2 pounds, 11 ounces. Lens, Double Combination, Rapid Rectilinear, Speed, *f*. 8, focal length, 6 $\frac{1}{2}$ inches. Shutter, F. P. K. Automatic. (See page 8.) Two Tripod Sockets. Brilliant reversible finder with hood. Automatic focusing lock.

THE PRICE

No. 4 F. P. K., R. R. Lens, F. P. K. Auto. Shutter,	\$20.00
Ditto, with Kodak Automatic Shutter,	25.00
Ditto, with Volute Shutter and B. & L. Zeiss Tessar Lens,	
Series II B, No. 5K, <i>f</i> . 6.3,	78.25
Ditto, with B. & L. Automatic Shutter and Isostigmat Lens, Series II, No. 4A, <i>f</i> . 6.3,	46.45
Black Sole Leather Carrying Case, with shoulder strap,	1.50
Glass Plate Adapter, 4 x 5, with ground glass,	3.50
Double Glass Plate Holders, 4 x 5, each,	1.00
N. C. Film Cartridge, 12 exposures, 4 x 5,90
Ditto, 6 exposures,45
Ditto, "Double-Two" Cartridge, 4 exposures,30



No. 4 F. P. Kodak—Continued

THOUGH but a year old, this instrument has achieved remarkable success, as it fills exactly the demand for a pocket camera taking the popular 4 x 5 picture.

It follows closely the lines of the Nos. 3 and 3A Folding Pocket Kodaks, and retains all their simple and practical features, including the automatic focusing lock, and rising and sliding front. The optical equipment has been most carefully selected, providing lenses of great rapidity and excellent covering power, fitted to automatic shutters, all fully in keeping with the general high character of the instrument.

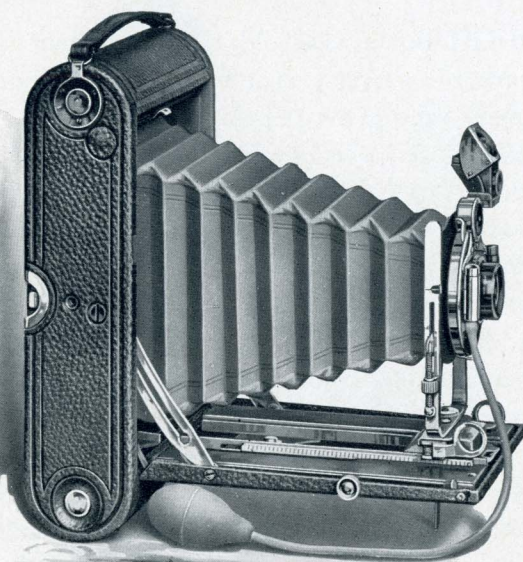
The size of the picture taken with the No. 4, 4 x 5 inches, is justly a favorite, large enough to be highly satisfactory, yet not so large as to make the cost of materials excessive.

The camera may be used with a tripod, for either horizontal or vertical pictures, a valuable feature when time exposures are necessary. By means of a simple adapter, the No. 4 Folding Pocket Kodak may be used with glass plates, taking the standard size 4 x 5. This attachment is simply an extra back for the camera, taking the place of the regular back, and adjusted in a few seconds, provided with ground glass and focusing shade and using double plate holders.

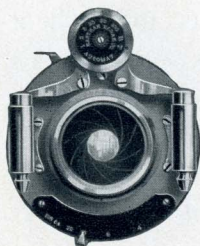
The Kodak Portrait Attachment may be used to excellent advantage with this instrument, as the camera may then be focused as close as two feet, eight inches from the subject.

The camera body is made of aluminum, covered with the finest black seal grain leather. Constructed with the usual Kodak skill, and beautifully finished, this instrument will appeal to both novice and seasoned expert.

No. 4A Folding Kodak



IN DETAIL For rectangular pictures, $4\frac{1}{4} \times 6\frac{1}{2}$ inches. Capacity, 6 exposures without reloading. Size of Kodak, $11 \times 6\frac{1}{2} \times 2\frac{5}{8}$ inches. Weight, 4 pounds, 4 ounces. Lens, Double Combination, Rapid Rectilinear, Speed, $f. 8$, focal length, $8\frac{1}{4}$ inches. Shutter, B. & L. Automatic. (See page 9.) Rising and sliding front. Rack and pinion for focusing. Two Tripod Sockets. Brilliant reversible finder with hood.



THE PRICE

No. 4A F. Kodak, R. R. Lens, B. & L. Auto. Shutter,	. \$35.00
Ditto, with Volute Shutter and B. & L. Zeiss Tessar Lens, Series II B, No. 6, $f. 6.3$,	. 106.50
Ditto, with B. & L. Automatic Shutter and Isostigmatar Lens, Series II, No. 6A, $f. 6.3$,	. 70.70
Black Sole Leather Carrying Case, with shoulder strap,	. 2.50
Glass Plate Adapter, $4\frac{1}{4} \times 6\frac{1}{2}$, with ground glass,	. 5.00
Double Glass Plate Holders, each,	. 1.25
N. C. Film Cartridge, 6 exposures, $4\frac{1}{4} \times 6\frac{1}{2}$,	. .65
Ditto, "Double-Two" Cartridge, 4 exposures,	. .45
Direct View Finder (Special equipment, see page 58),	. 3.00

No. 4A Folding Kodak—Continued

THE taking of large pictures no longer necessitates a bulky and cumbersome outfit, as it has required but a slight increase in the dimensions of the popular Folding Pocket Kodaks to produce this light and compact instrument, taking a $4\frac{1}{4}$ by $6\frac{1}{2}$ picture.

Retaining all the popular features of the Folding Pocket Kodaks, the 4A Folding Kodak exactly meets the requirements of the photographer, who, from either choice or necessity, must have large-size pictures.

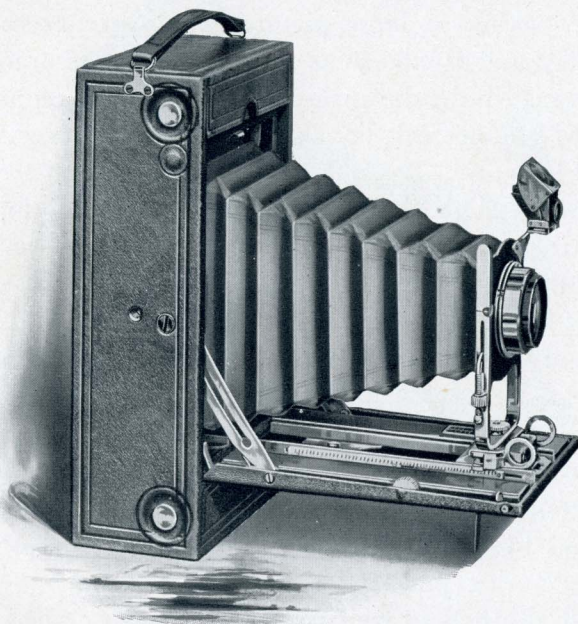
Without complications, exceedingly simple to understand and operate, and with an optical equipment fully in keeping with the high character of the instrument, a wide range of work may successfully be undertaken even by the inexperienced.

In attaining simplicity and compactness, no practical feature has been slighted, the bellows extension being ample to insure correct perspective, and all attachments carefully made and adjusted to provide strength and durability.

With the Kodak Portrait Attachment, which may be supplied, and an extension focusing scale, the camera may be operated as close as $3\frac{1}{2}$ feet from the subject, permitting head and shoulder portraits, limited only by the size of the film. When desired, glass plates may be used by means of an adapter, furnished extra.

The frame work of the camera is made of aluminum, providing lightness and rigidity, and is covered with finest black seal grain leather, all fittings nicked. Every adjustment works with the smooth accuracy that has made the Kodak quality famous.

No. 4A Speed Kodak



IN DETAIL For rectangular pictures, $4\frac{1}{4} \times 6\frac{1}{2}$ inches. Capacity, 6 exposures without reloading. Size of Kodak, $11\frac{3}{4} \times 3\frac{1}{8} \times 6\frac{1}{2}$ inches. Weight, 6 pounds. Shutter, Kodak Focal Plane, speed $\frac{1}{1000}$ of a second to $\frac{1}{5}$ of a second. Rising and sliding front, rack and pinion for focusing. Two Tripod Sockets. Brilliant reversible finder, with hood, also direct view finder and focusing scale.



THE PRICE

No. 4A Speed Kodak, Kodak Focal Plane Shutter (without lens), .	\$50.00
Ditto, with B. & L. Zeiss Tessar Lens, Series IIB, No. 6, f. 6.3, .	109.50
Ditto, with Goerz Dagor Lens, Series III, No. 3, f. 6.8,	112.50
Black Sole Leather Carrying Case, with shoulder strap,	2.50
N. C. Film Cartridge, 6 exposures, $4\frac{1}{4} \times 6\frac{1}{2}$,65
Ditto, "Double-Two" Cartridges, 4 exposures,45

No. 4A Speed Kodak — Continued

THIS camera, while designed primarily for the photographing of rapidly-moving objects, is equally well adapted to all other classes of work.

The important feature of this camera is the Kodak Focal Plane Shutter, by means of which automatic exposures, varying from $\frac{1}{2}$ of a second up to $\frac{1}{1000}$ of a second may be made. It is also, of course, adapted to time exposures. The shutter is built into the camera body, and the exposures are made by means of a curtain, with an adjustable opening, which passes directly in front of the sensitive film.

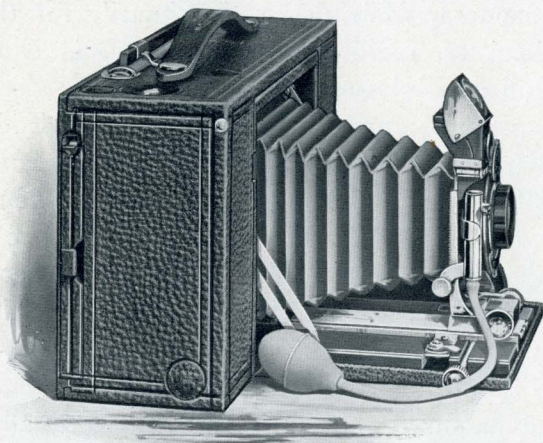
A safety blind protects the film while the shutter curtain is being set. The shutter curtain may be instantly adjusted for time exposures, all shutter adjustments being made from the outside of the camera. The shutter is in no way complicated, and is simple to understand and operate.

The Focal Plane Shutter is the only shutter with which it is possible to get extremely short exposures, such as are essential with rapidly-moving objects. The Focal Plane is also the most efficient of shutters, as it permits a greater amount of light to reach the plate with a given exposure, thus affording a fully-timed negative, where hopeless under-exposure would result with the ordinary shutter.

Equipped with this type of shutter, the 4A Speed Kodak is ideal for photographing all objects in rapid motion — such as athletes, race horses, automobiles, railroad trains, birds on the wing — and is also well adapted to home portraiture.

When closed the camera is very compact — less than half the size of other cameras containing a focal plane shutter.

No. 4 Screen Focus Kodak



IN DETAIL For rectangular pictures, 4 x 5 inches. Capacity, 12 exposures without reloading. Size of Kodak, 10 x 5 $\frac{1}{4}$ x 3 $\frac{1}{8}$ inches. Weight, 3 pounds, 14 ounces. Lens, Rapid Rectilinear, Speed, *f.* 8, focal length, 6 $\frac{1}{2}$ inches. Shutter, Kodak Automatic. (See page 8.) Rack and pinion for focusing. Rising and sliding front. Two Tripod Sockets. Brilliant reversible finder with hood, and spirit level.

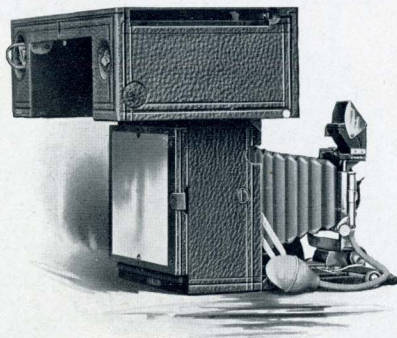
THE PRICE

No. 4 Screen Focus Kodak, R. R. Lens, Kodak Automatic Shutter,	\$30.00
Ditto, with Volute Shutter and B. & L. Zeiss Tessar Lens, Series II B, No. 5K, <i>f.</i> 6.3,	88.25
Ditto, with B. & L. Automatic Shutter and Isostigmatar Lens, Series II, No. 4A, <i>f.</i> 6.3,	56.45
Black Sole Leather Carrying Case, velvet lined,	2.50
Glass Plate Adapter, 4 x 5,	2.50
Double Glass Plate Holders, 4 x 5, each,	1.00
N. C. Film Cartridge, 12 exposures, 4 x 5,90
Ditto, 6 exposures,45
Ditto, "Double-Two" Cartridge, 4 exposures,30
Kodak Portrait Attachment,50



Screen Focus Kodak—Continued

THIS camera is distinct from all the other Kodaks, in that it permits focusing on the ground glass screen without removing the roll of film from the camera. This is accomplished by swinging the roll holder up out of the focal plane, a dark slide protecting the film meanwhile. When correct focus has been obtained the roll holder is swung into place, dark slide removed and the exposure made.



SHOWING GROUND GLASS FOR FOCUSING

Focusing may be done between each exposure. This great convenience in no way detracts from the usual Kodak simplicity. If desired, the regular focusing scale may be used.

The instrument may be converted into a plate camera by removing roll holder, and adjusting plate holder back; readily accomplished in a few seconds.

As a plate camera it is light, strong, and convenient, being fully as compact as instruments which are constructed for use with plates only.

A double extension bed allows the operator to work within 22 inches of the subject when focusing upon the ground glass, a valuable feature in still life and copying work.

This Kodak will be appreciated by the careful photographers who desire to use film on account of its convenience, and yet desire to prove the composition of their picture on the ground glass screen before exposure.

No. 2 Bull's-Eye Kodak

THOUGH one of the very first cartridge cameras built, this instrument, by reason of its simplicity and certainty, has for many years maintained its popularity.

Of the fixed focus type, it is exceedingly simple in operation, yet lacks none of the features necessary to the securing of good pictures, and will universally afford good results.

The camera is quickly and easily opened for daylight loading, and for removing the film after the exposures are made.

With the Kodak Portrait Attachment excellent bust portraits may be made.

The camera is substantially constructed, covered with fine quality seal grain leather, all fittings nickeled.



IN DETAIL For square pictures, $3\frac{1}{2} \times 3\frac{1}{2}$ inches. Capacity, 12 exposures without reloading. Size of Kodak, $5\frac{3}{4} \times 4\frac{5}{8} \times 4\frac{1}{2}$ inches. Weight, 22 ounces. Lens, Meniscus Achromatic, fixed $4\frac{1}{2}$ -inch focus. Shutter, Eastman Rotary, with three stops. (See page 7.) Tripod Socket and brilliant finder.

THE PRICE

No. 2 Bull's-Eye Kodak, Meniscus Achromatic Lens, Eastman Rotary Shutter,	\$8.00
Black Sole Leather Carrying Case, with shoulder strap,	1.25
N. C. Film Cartridge, 12 exposures, $3\frac{1}{2} \times 3\frac{1}{2}$,60
Ditto, 6 exposures,30
Ditto, "Double Two" Cartridge, 4 exposures,20
Kodak Portrait Attachment,50

No. 3 Bull's-Eye Kodak

THIS new Kodak is an adaption of the simple box form square picture camera to the rectangular shape, $3\frac{1}{4}$ by $4\frac{1}{4}$. The shutter being always set and the lenses of fixed focus, this camera is not only always ready for instant action, but exceedingly simple to operate, yet available for practically every class of work.



Scientifically constructed, providing both lightness and strength, and undergoing the most rigid factory inspection this camera will afford splendid satisfaction. With the Kodak Portrait Attachment excellent bust portraits may be made. Camera covered with finest quality seal grain leather, all fittings nickeled.

IN DETAIL For rectangular pictures, $3\frac{1}{4} \times 4\frac{1}{4}$ inches. Capacity, 12 exposures without reloading. Size of Kodak, $6\frac{1}{2} \times 4\frac{5}{8} \times 5\frac{1}{2}$ inches. Weight, 24 ounces. Lens, Meniscus Achromatic, fixed 5-inch focus. Shutter, Eastman Rotary, with three stops. (See page 7.) Two Sockets for Tripod Screw. Two brilliant finders.

THE PRICE

No. 3, Bull's-Eye Kodak, Meniscus Achromatic Lens, Eastman Rotary Shutter,	\$ 8.00
Black Sole Leather Carrying Case, with shoulder strap,	1.25
N. C. Film Cartridge, 12 exposures, $3\frac{1}{4} \times 4\frac{1}{4}$,70
Ditto, 6 exposures,35
Ditto, "Double-Two" Cartridge, 4 exposures,25
Kodak Portrait Attachment,50

No. 2 Flexo Kodak

THIS camera is of the fixed focus type, taking the popular $3\frac{1}{2} \times 3\frac{1}{2}$ square picture, and is a simple yet thoroughly practical instrument for the beginner in photography.

Like the other Kodaks, it is daylight loading and unloading, and is ready for use, the price including every requisite for picture taking except the film.

Complete in every respect, and taking good pictures, this instrument is without exception the most efficient camera ever offered for so low a price.

This camera is constructed and assembled with all the care and skill given the higher-priced instruments. It is covered with fine black grain leather and handsomely finished.



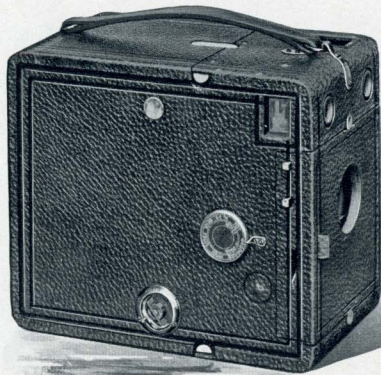
IN DETAIL For square pictures, $3\frac{1}{2} \times 3\frac{1}{2}$ inches. Capacity, 12 exposures without reloading. Size of Kodak, $5\frac{7}{8} \times 4\frac{5}{8} \times 4\frac{3}{8}$ inches. Weight, 19 ounces. Lens, Single Achromatic, fixed $4\frac{1}{2}$ inch focus. Shutter, Eastman Rotary, with three stops. (See page 7.) Tripod Socket and finder.

THE PRICE

No. 2 Flexo Kodak, Achromatic Lens, Eastman Rotary Shutter,	\$5.00
Black Sole Leather Carrying Case, with shoulder strap,	1.25
N. C. Film Cartridge, 12 exposures, $3\frac{1}{2} \times 3\frac{1}{2}$,60
Ditto, 6 exposures,30
Ditto, "Double-Two" Cartridge, 4 exposures,20
Kodak Portrait Attachment,50

No. 3B Quick Focus Kodak

THIS instrument is of special construction, being provided with a device which permits of its being placed in focus for any distance with exceeding rapidity, making the camera of unusual value in photographing street scenes and the like.



Simply turning a dial and pressing a spring puts the camera in focus for any desired distance.

The quick focus device in no way complicates the working of the instrument, and it is as readily understood and handled as the simpler fixed focus cameras.

The size of the picture it takes, $3\frac{1}{4}$ by $5\frac{1}{2}$ inches, makes it a splendid camera for all around work.

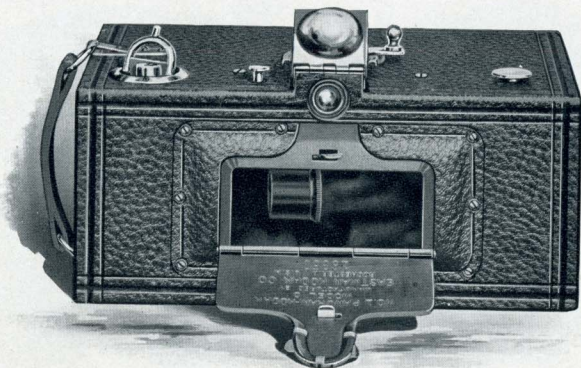
IN DETAIL For rectangular pictures, $3\frac{1}{4}$ x $5\frac{1}{2}$ inches. Capacity, 10 exposures without reloading. Size of Kodak, $8\frac{1}{8}$ x $6\frac{7}{8}$ x $4\frac{5}{8}$ inches. Weight, 2 pounds, 9 ounces. Lens, Meniscus Achromatic. Focal length, $6\frac{1}{2}$ inches. Shutter, Eastman Rotary, with three stops. (See page 7.) Two Tripod Sockets. Two brilliant finders.

THE PRICE

No. 3B Quick Focus Kodak, Meniscus Achromatic Lens, Eastman Rotary Shutter, . . .	\$12.00
Black Sole Leather Carrying Case, with shoulder strap,	2.50
* N. C. Film Cartridge, 10 exposures, $3\frac{1}{4}$ x $5\frac{1}{2}$,70
* Ditto, 6 exposures,40
* Ditto, "Double-Two" Cartridge, 4 exposures,30
Kodak Portrait Attachment,50

* Specify "For 3B Quick Focus Kodak."

Panoram Kodaks



No. 1 PANORAM KODAK

IN DETAIL For rectangular pictures, $2\frac{1}{4} \times 7$ inches. Capacity, 6 exposures without reloading. Size of Kodak, $3\frac{3}{8} \times 4\frac{1}{4} \times 7\frac{3}{8}$ inches. Weight, 24 ounces. Lens, specially selected as to quality and focal length. Shutter, Panoram. Two Tripod Sockets. Brilliant finder with hood. Uses No. 1 F. P. Kodak cartridges.

No. 4 PANORAM KODAK

IN DETAIL For rectangular pictures, $3\frac{1}{2} \times 12$ inches. Capacity, 5 exposures without reloading. Size of Kodak, $4\frac{3}{4} \times 5\frac{1}{2} \times 10\frac{1}{8}$ inches. Weight, 2 pounds, 14 ounces. Lens, specially selected as to quality and focal length. Shutter, Panoram. Two Tripod Sockets. Brilliant finder with hood. Uses No. 4 B. E. Cartridges.

THE PRICE

No. 1 Panoram Kodak,	\$10.00	No. 4 Panoram Kodak,	\$20.00
Black Sole Leather Carrying Case, with shoulder strap,	1.75	Black Sole Leather Carrying Case, with shoulder strap,	2.00
N. C. Film Cartridge, 6 exposures, $2\frac{1}{4} \times 7$,40	N. C. Film Cartridge, 5 exposures, $3\frac{1}{2} \times 12$,90
Ditto, 3 exposures,20	Ditto, 2 exposures,45

Panoram Kodaks — Continued

A WONDERFULLY inviting field is opened to the amateur by the Panoram Kodaks.

As their name indicates, they are intended for picturing wide expanses of landscape and similar subjects, and this without the exceedingly small images incident to the use of extreme wide angle lenses, heretofore the only method of securing such pictures.

Aside from the remarkable horizontal views, decidedly unique pictures of high waterfalls, mountain peaks, and similar subjects may be made by holding the camera vertically.

For taking outdoor group pictures the Panorams are unequaled, as the subjects may be arranged in a semi-circle, at a given distance from the Kodak, thus permitting all of them to be in the "front row" and of proper relative size.

Though possessing such remarkable advantages, the Panoram Kodaks are exceedingly simple in construction and operation.

The compassing of so wide an angle of view is accomplished by swinging the lens on a pivot during the exposure, the shutter being accurately adjusted to insure even illumination throughout the exposure.

The brilliant finder shows the sky and foreground, and the entire view may be examined by simply swinging the camera in position so as to take in the full view, as indicated by the V-shaped lines on the top of the camera. The No. 1 Panoram takes a view of 112 degrees, while the No. 4 has the great scope of 142 degrees. The Panoram Kodaks use the regular daylight loading cartridges. Not adapted to indoor work. Covered with best black leather, nicked fittings, and are beautifully finished.

No. 1 Brownie Camera

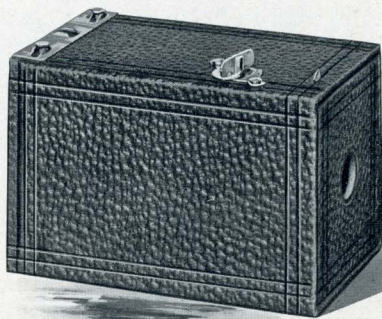
SIMPLE in construction and operation, and costing but a trifle, this little camera stands the test—it takes good pictures.

Notwithstanding its low cost, every Brownie undergoes the regular, thorough Kodak inspection.

Only our immense manufacturing facilities and the enormous quantities of Brownies sold, make the quality and price possible. The camera is well made, covered with fine quality imitation leather, and has nickeled fittings. V-shaped lines on top give the scope of view, or a Brownie Finder (detachable) may be provided for twenty-five cents.

Pictures of any sort may be made with the Brownie, both “snap shots” and “time” exposures, and it will be found an ideal instrument for interesting children in picture making.

IN DETAIL For square pictures, $2\frac{1}{4} \times 2\frac{1}{4}$ inches. Capacity, 6 exposures without reloading. Size of Camera, $4\frac{7}{8} \times 3\frac{1}{8} \times 3$ inches. Weight, 8 ounces. Lens, Meniscus, fixed $3\frac{3}{4}$ -inch focus. Shutter, Eastman Rotary, with one stop. (See page 7.)



THE PRICE

No. 1 Brownie Camera, Meniscus Lens, Eastman Rotary Shutter,	\$1.00
No. 1 Brownie Carrying Case, holds Camera and Finder,50
N. C. Film Cartridge, 6 exposures, $2\frac{1}{4} \times 2\frac{1}{4}$,15
Brownie Finder, detachable,25
No. 1 Brownie Developing and Printing Outfit, including paper for 24 prints,90

No. 2 Brownie Camera

THIS camera is an amplification of the No. 1 Brownie, taking larger pictures and with greater capabilities.



Truly remarkable pictures have been produced by these instruments, in the hands of school children, while work of the highest character has been done with them by experts. They are as simple in operation as the No. 1 Brownie and are truly serviceable and reliable cameras. When fitted with the Kodak Portrait Attachment, good-sized bust portraits of excellent quality may be made. Equipped with two finders, and covered with fine imitation leather, the No. 2 Brownie is attractive and substantial in appearance, and in every respect fully merits the remarkable popularity it has attained.

IN DETAIL For rectangular pictures, $2\frac{1}{4} \times 3\frac{1}{4}$ inches. Capacity, 6 exposures without reloading. Size of Camera, $5\frac{5}{8} \times 4 \times 3\frac{1}{4}$ inches. Weight, 13 ounces. Lens, Meniscus, fixed $4\frac{1}{2}$ -inch focus. Shutter, Eastman Rotary, with three stops. (See page 7.) Two finders.

THE PRICE

No. 2 Brownie Camera, Meniscus Lens, Eastman Rotary Shutter,	\$2.00
No. 2 Brownie Carrying Case, with shoulder strap,75
N. C. Film Cartridge, 6 exposures, $2\frac{1}{4} \times 3\frac{1}{4}$,20
Kodak Portrait Attachment,50
A B C Developing and Printing Outfit (see page 48),	1.50

No. 2A Brownie Camera

EXCEEDINGLY attractive in appearance and of great practical utility, this camera is one of the most popular of the Brownie family.

The size of the picture it takes, $2\frac{1}{2}$ by $4\frac{1}{4}$ inches, affords numberless possibilities for effective landscape composition, and when used vertically is just right for full and three-quarter length portraits.

Very low in cost, yet capable of producing first-class results, this instrument will decidedly appeal to those desiring an inexpensive method of taking up picture making the all by daylight way.

The No. 2A Brownie uses the regular six and twelve exposure film cartridges, same as used in the No. 1A Folding Pocket Kodak.



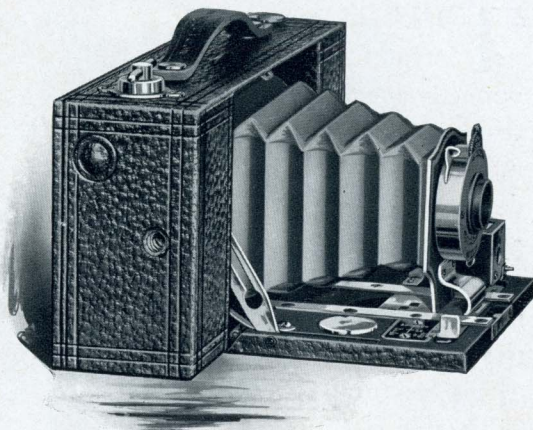
IN DETAIL For rectangular pictures, $2\frac{1}{2}$ x $4\frac{1}{4}$ inches. Capacity, 12 exposures without reloading. Size of Camera, $6\frac{1}{8}$ x $3\frac{7}{8}$ x $5\frac{1}{8}$ inches. Weight, 21 ounces. Lens, Meniscus Achromatic, fixed 5-inch focus. Shutter, Eastman Rotary, with three stops. (See page 7.) Two finders.

THE PRICE

No. 2A Brownie Camera, Meniscus Achromatic Lens, Eastman Rotary Shutter,	\$3.00
No. 2A Brownie Carrying Case, with shoulder strap,75
N. C. Film Cartridge, 12 exposures, $2\frac{1}{2}$ x $4\frac{1}{4}$,50
Ditto, 6 exposures,25
Kodak Portrait Attachment,50
A B C Developing and Printing Outfit (see page 48),	1.50

No. 2 Folding Pocket Brownie

A REMARK-ably compact and handsome little instrument, that slips easily into any coat pocket, and brings the inexpensive Brownies into the pocket photography field. Devoid of all compli-



cations, and extremely simple to understand and operate, this instrument is capable of producing first-class results, and, taking a rectangular picture, is adapted to a wide range of work.

With the Kodak Portrait Attachment large size bust portraits may be made.

Camera covered with fine quality imitation leather, full nickeled fittings.

IN DETAIL For rectangular pictures, $2\frac{1}{4} \times 3\frac{1}{4}$ inches. Capacity, 6 exposures without reloading. Size of camera, $6\frac{7}{8} \times 3\frac{3}{8} \times 2\frac{1}{8}$ inches. Weight, 16 ounces. Lens, Meniscus, fixed $4\frac{1}{2}$ -inch focus. Shutter, Pocket Automatic. (See page 7.) Two Tripod Sockets. Automatic focusing lock. Reversible finder.



THE PRICE

No. 2 Folding Pocket Brownie, Meniscus Lens, Pocket Automatic Shutter,	\$5.00
No. 2 Folding Pocket Brownie Carrying Case,75
N. C. Film Cartridge, 6 exposures, $2\frac{1}{4} \times 3\frac{1}{4}$,20
Kodak Portrait Attachment,50

No. 3 Folding Brownie

THIS instrument perfectly meets the requirements of those desiring an inexpensive and accurate instrument, taking the popular $3\frac{1}{4} \times 4\frac{1}{4}$ picture.

Though simple in every feature, it is designed for serious work and will prove equally adaptable for quick-work snap shots, or studied composition. With the Kodak Portrait Attachment large size bust portraits may be made. The No. 3 Folding Brownie takes 12 exposure cartridges.



IN DETAIL For rectangular pictures, $3\frac{1}{4} \times 4\frac{1}{4}$ inches. Capacity, 12 exposures without reloading. Size of Camera, $8\frac{3}{8} \times 4\frac{5}{8} \times 2\frac{5}{8}$ inches. Weight, 25 ounces. Lens, Meniscus Achromatic, 5-inch focus. Shutter, F. P. K. Automatic without bulb. (See page 8.) Automatic focusing lock. Two Tripod Sockets. Reversible finder.

THE PRICE

No. 3 Folding Brownie Camera, Meniscus Achromatic	
Lens, F. P. K. Automatic Shutter,	\$9.00
No. 3 Folding Brownie Carrying Case,	1.00
N. C. Film Cartridge, 12 exposures, $3\frac{1}{4} \times 4\frac{1}{4}$,70
Ditto, 6 exposures,35
Ditto, "Double-Two" Cartridge, 4 exposures,25
Kodak Portrait Attachment,50



No. 2 Stereo Brownie



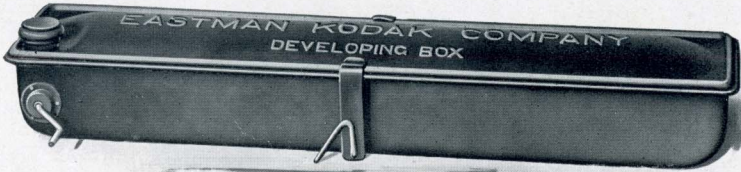
THE making of stereoscopic photographs will prove doubly fascinating with this instrument, as all complications have been avoided, and even the cutting apart and transposing of the negatives has been done away with by means of the self-transposing printing frame. The lenses are carefully selected and the twin shutters are equally effective.

IN DETAIL For stereo pictures, each $3\frac{1}{4} \times 2\frac{1}{2}$ inches. Capacity, 10 stereo exposures without reloading. Size of Camera, $9\frac{3}{4} \times 4\frac{1}{2} \times 2\frac{1}{2}$ inches. Weight, 20 ounces. Lenses, Meniscus Achromatic, $4\frac{1}{2}$ -inch focus. Shutters, Pocket Automatic, with four stop openings. (See page 7.) Automatic focusing lock. Tripod Socket. Brilliant finder, with hood.

THE PRICE

No. 2 Stereo Brownie Camera, Meniscus Achromatic Lenses, Pocket Automatic Shutter, .	\$12.00
No. 2 Stereo Brownie Carrying Case,	1.00
N. C. Film Cartridge, 10 stereo exposures,70
Ditto, 6 exposures,40
Ditto, "Double-Two" Cartridge, 4 exposures,30
Self-Transposing Printing Frame, for $3\frac{1}{4} \times 2\frac{1}{2}$, stereo prints,	1.50
Brownie Stereoscope,75

No. 2 Brownie Developing Box



THE No. 2 Brownie Developing Box is a modified form of the Kodak Film Tank, so simple as to be readily understood and successfully operated by any boy or girl.

The No. 2 Brownie Developing Box is a metal box fifteen inches in length, just long enough to accommodate a roll of No. 1 or No. 2 Brownie film in one loop.

To develop, the roll of film is inserted in the spool carrier, and by means of a cord and winding shaft the film is unrolled and carried around a roller bearing, thus exposing the film to the action of the developer.

Before unrolling the film the developer is poured in the box and the cover put in place. The film is unrolled by turning the crank.

Then the box is rocked on its standard for six minutes. The developer is then poured off and box filled with water to wash out developer, after which film is removed and fixed in daylight.

The Brownie Developing Box produces better negatives than can be produced by the old method of hand development in the dark room.

THE PRICE

No. 2 Brownie Developing Box,	\$1.00
Brownie Developing Box Powders, per package of 6,15
Kodak Acid Fixing Powders, ½-pound package,15
Ditto, ¼-pound package,10

The Kodak Film Tank



THE Kodak Film Tank is not an experiment, as it is being used and enthusiastically endorsed by photographers, both amateur and professional, the world over.

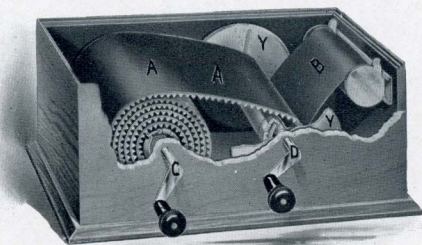
Daylight development of film by means of the Kodak Film Tank means more than convenience, as it affords, by the simplest means, negatives of a much higher average than those obtained by any other method.

Every step may be performed in full daylight, and the entire operation is so simple as to be readily understood by the merest novice. The film, after exposure, is protected from light by being first wound up with a light proof apron, after which it is removed from the winding box and placed in a cup of developer until development is completed.

As shown in cut on page 40, apron, black paper, and film are wound on axle D, and, when so wound, are removed from the box and placed in the Solution Cup in the light of an ordinary room. Development is allowed to go on for twenty minutes and the film requires no attention during that time beyond turning the cup containing the film end for end two or

The Kodak Film Tank—Continued

three times during development, a tightly-fitting cover for the cup being provided for this purpose. (In case of the Brownie Film Tank, the film roll itself is turned, no cover for the cup being necessary.) When development is completed the film



BOX FOR WINDING PROTECTING APRON AND FILM TOGETHER

is removed for fixing. It has been definitely proven by numberless experiments that development by timing—the Kodak Film Tank, and Brownie Developing Box is correct from a scientific standpoint, and in practice, better than trying to determine the proper duration of development by inspecting the negative before the dark-room lamp. The Kodak Film Tank is endorsed and used by many of the leading pictorialists, who are obtaining with it their best negatives.

Compared with dark-room development, it is not only convenience against inconvenience, but it is science against guess work.

Kodak Film Tanks are made in four sizes: the “7-inch,” the “5-inch,” the “3½-inch,” and “Brownie,” the latter taking only 2¼-inch Brownie film and having no cover for solution cup.

With the Kodak Film Tank, the amateur can develop a number of rolls of film at once; merely providing himself with extra tanks, aprons, and reels, which will be found listed (Duplicating Outfits) in the price list on page 41. The Winding

The Kodak Film Tank—Continued

Boxes themselves are strongly made with metal parts nicked. The Tank is of brass, heavily nicked. Both handles of the box are removable and, together with the tank and apron, can be packed inside of the box, thus making the entire outfit self-contained.

THE PRICE

Brownie Kodak Film Tank. For use with No. 1, No. 2, and No. 2 Folding Pocket Brownie Cartridges, complete,	\$2.50
3½-inch Kodak Film Tank. For use with all Kodak or Brownie Cartridges having a film width of 3½ inches or less, complete,	5.00
5-inch Kodak Film Tank. For use with all Kodak and Brownie Cartridges having a film width of 5 inches or less, complete,	6.00
7-inch Kodak Film Tank. For use with No. 5 Cartridge Kodak or shorter film Cartridges, complete,	7.50

DUPLICATING OUTFITS

Consisting of one Solution Cup, one Transferring Reel, and one Apron.

Duplicating Outfit for Brownie Kodak Film Tank,	\$1.25
Duplicating Outfit for 3½-inch Kodak Film Tank,	2.50
Duplicating Outfit for 5-inch Kodak Film Tank,	3.00
Duplicating Outfit for 7-inch Kodak Film Tank,	3.75

KODAK FILM TANK SUPPLIES

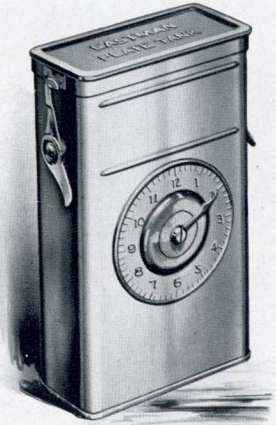
All the amateur needs in the line of supplies for the Kodak Film Tanks are Developing Powders, and Kodak Acid Hypo for fixing. The developer powders listed below are accurately prepared and contain only carefully-tested chemicals of the best quality.

THE PRICE

Kodak Tank Developer Powders, Brownie, per package of ½ dozen,	\$.15
Ditto, for 3½-inch Tank, per package, ½ dozen,20
Ditto, for 5-inch Tank, per package, ½ dozen,25
Ditto, for 7-inch Tank, per package, ½ dozen,25
Kodak Acid Fixing Powder, per ¼-pound package,10
Ditto, per ½-pound package,15
Ditto, per 1-pound package,25

The Eastman Plate Tank

THE Eastman Plate Tank is the same in theory as the highly successful Kodak Film Tank, with, of course, such modifications as are rendered necessary by the physical difference between plates and film. That equally successful results are produced goes without saying. The Eastman Plate Tank consists of a metal solution cup, with tightly-fitting cover, a rack for holding twelve plates, or less, during development and fixing, and an ingenious loading block for loading the plates into the rack in the dark room. The exposed plates are loaded into the rack and placed in the tank in the dark room, and the tank cover fastened in place. As soon as the plates have been lowered into the developer, the time is noted by watch or clock, and the hand on dial on front of tank set to indicate time when development will be complete. Development is allowed to continue for fifteen minutes, the tank being reversed several times. After development the developer is washed out of the plates, and the fixing bath poured into the tank. Fixing may be carried on in daylight.



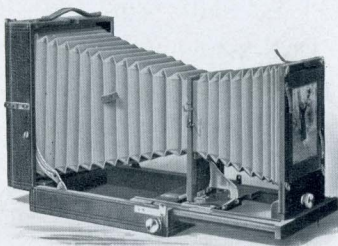
THE PRICE

Eastman Plate Tank, 4 x 5, including Solution Cup, Plate Rack, and Loading Block, . . .	\$3.50
Ditto, 5 x 7,	4.50
Kit for 4 x 5 Tank, to take 3 1/4 x 4 1/4 plates,50
Kit for 5 x 7 Tank, to take 4 1/4 x 6 1/2 plates,75
Eastman Plate Tank Developer Powders, for 4 x 5 tank, per package, 1/2 dozen,20
Ditto, for 5 x 7 tank, per package, 1/2 dozen,35
Kodak Acid Fixing Powder, per 1-pound package,25

Enlarging Cameras

No. 1 KODAK ENLARGING CAMERA

FOR making $6\frac{1}{2} \times 8\frac{1}{2}$ enlargements from 4×5 and $3\frac{1}{4} \times 4\frac{1}{4}$ negatives. Smaller negatives enlarge in proportion. May be used as a portrait camera by removing negative carrier and substituting portrait lens.



THE PRICE

No. 1 Kodak Enlarging Camera,	\$15.00
Inside Kits, $6\frac{1}{2} \times 8\frac{1}{2}$, 5×7 , or 4×5 opening,35
Glass Negative Holders, $3\frac{1}{4} \times 4\frac{1}{4}$ or $3\frac{1}{2} \times 3\frac{1}{2}$,50
Special Portrait Lens, $8\frac{1}{2}$ -inch focus, Speed, $f. 8$ for Bust Work,	7.50
Extra Lens Board, no extra charge for fitting to our Special Portrait Lens,75

BROWNIE ENLARGING CAMERAS

THE Brownie Enlarging Cameras consist of a light tight cone with attachments to hold a negative at the small end, and a sheet of Bromide paper at the other; the lens is fixed inside the cone at just the right distance to insure perfect focus. Exposure is made by daylight, and dark room is necessary only for loading and development. The entire operation may be performed in daylight when Velox instead of Bromide paper is used, but in such case the exposure is, of course, much longer.



THE PRICE

No. 2 Brownie Enlarging Camera, for 5×7 Enlargements from $2\frac{1}{4} \times 3\frac{1}{4}$ negatives,	\$2.00
No. 3, ditto, for $6\frac{1}{2} \times 8\frac{1}{2}$ Enlargements from $3\frac{1}{4} \times 4\frac{1}{4}$ negatives,	3.00
No. 4, ditto, for 8×10 Enlargements from 4×5 negatives (will also take $3\frac{1}{4} \times 5\frac{1}{2}$ negatives),	4.00

Kodak Portrait Attachment

PORTRAIT making does not demand elaborate apparatus. A fifty-cent portrait attachment on a small Kodak or Brownie camera will enable one to make good sized head and shoulder pictures — while the attachment which we now furnish for the 4A and other Kodaks of larger size enables one to make bust portraits of any size desired, limited only by the dimensions of the plate. The Kodak Portrait Attachments are simply extra lenses which slip on in front of the regular lenses. They in no way affect the operation of the fixed focus Kodaks except that they make them cut sharp at a distance of $3\frac{1}{2}$ feet, and thus throw more distant objects out of focus.



MADE WITH KODAK PORTRAIT ATTACHMENT AND NO. 3 FOLDING
POCKET KODAK BY LIGHT OF ORDINARY WINDOW, EXACT SIZE

They may also be used to good advantage with any of the focusing Kodaks, not only for portraits, but for small objects at close range.

Portrait Attachment — Continued

With the attachment in place, the focus of these instruments set at 15 feet, and the subject $3\frac{1}{2}$ feet from the cameras, admirable bust portraits are obtained, and, by changing the focus, it is practical to work at different distances, thus varying the size of the image.



For use with all regularly equipped Kodaks listed in this catalogue except the 4A Speed Kodak and the Panoram-Kodaks. May also be used with the No. 2 and 2A Brownies, and No. 2 Folding Pocket, and No. 3 Folding Brownie Cameras.

Be sure and give exact designation of instrument when ordering, and when to be used with a pneumatic release shutter, also give exact designation of same.

THE PRICE

Kodak Portrait Attachment, \$.50

KODAK WIDE ANGLE LENSES

These lenses have a speed of $f. 16$ and are interchangeable with the lenses furnished with the No. 4 Screen Focus Kodak, the Nos. 3, 3A, and 4 Folding Pocket Kodaks, and the No. 4A Folding Kodak. The wide angle Kodak lenses are rectilinear, carefully tested, and are absolutely high grade in every instance. With each one we furnish a case and a graduated focusing scale for attaching to the camera bed.

In ordering, give size (No.) of Kodak and specify the shutter that the lens is to be used with.

THE PRICE

No. 3 ($3\frac{1}{4} \times 4\frac{1}{4}$) Wide Angle Kodak Lens, equivalent focus, $3\frac{1}{2}$ inches, \$5.00
 No. 4 (4×5) Wide Angle Kodak Lens, equivalent focus, $4\frac{1}{2}$ inches, 5.00
 (Also adapted to 3A Kodak.)
 No. 5 (5×7) Wide Angle Kodak Lens, equivalent focus, $5\frac{1}{2}$ inches, 7.50
 (Also adapted to 4A Kodak.)

The Anastigmat Advantage

ALMOST any lens will do good work if you do not ask too much of it. The speed of the shutter and the size of the stop openings must, however, be in harmony with the power of the lens. The stop opening must be small enough to make it cut a sharp picture. If this opening is small, the shutter must be relatively slow, in order to allow light enough to pass through the lens to affect the sensitive film.

Our double combination or "Rapid Rectilinear" lenses are fast, but the largest opening that will give sharp results is one-eighth of their focal length, designated as $f. 8$ (U. S. 4). Such lenses will make snap shots in sunlight in a hundredth of a second and at a fiftieth will make very satisfactory negatives on hazy days.

When lenses of still greater speed are required we get into the Anastigmat class. These lenses consist of several pieces of glass most carefully ground and adjusted and the diameter of the largest opening is more than one-seventh of the focal length — designated with the Tessar lens $f. 6.3$, the Cooke $f. 6.5$, etc. It is this large opening that gives the speed. The great advantage of the Anastigmat lies in the fact that it permits the making of slow instantaneous exposures on days when they would be out of the question with a single lens and when results would be doubtful even with a Rapid Rectilinear.

You do not always need to avail yourself of the high speed of the anastigmat, but when you do need it, it is there.

Either of these lenses which we list will prove a great satisfaction to the Kodaker.

SPECIAL LENS AND SHUTTER EQUIPMENTS

The No. 1A Special, No. 3, No. 3A, and No. 4 Folding Pocket, No. 4 Screen Focus, No. 4A Folding Kodaks, and No. 4A Speed Kodaks may be equipped as follows

Style of Camera	B. & L. Plastigmat Lens, <i>f.</i> 6.8, Kodak Auto. Shutter	B. & L. Plastigmat Lens, <i>f.</i> 6.8, Volute or X. L. Sector Shutter	B. & L. Zeiss Tessar Lens, Series II B, <i>f.</i> 6.3, Volute or X. L. Sector Shutter	Cooke Anastigmat Lens, Series III A, <i>f.</i> 6.5, Volute or X. L. Sector Shutter	Goerz Dagor Lens, Series III, <i>f.</i> 6.8, Volute or X. L. Sector Shutter	Isostigmat Lens, Series II, <i>f.</i> 6.3, Volute Shutter *
No. 3, F. P. K.,	No. 1, \$49.90	No. 1, \$64.20	No. 4, \$63.70	No. 3, \$65.20	No. 0, \$67.65	No. 3A, \$52.15
No. 3A, F. P. K.,	No. 2, 57.95	No. 2, 72.25	No. 5K, 78.25	No. 4, 71.75	No. 1A, 77.20	No. 4A, 60.75
No. 4, F. P. K.,	No. 2, 57.95	No. 2, 72.25	No. 5K, 78.25	No. 4, 71.75	No. 1A, 77.20	No. 4A, 60.75
No. 4, S. F. K.,	No. 2, 67.95	(No. 2, 82.25) Volute only)	(No. 5K, 88.25) Volute only)	(No. 4, 81.75) Volute only)	(No. 1A, 87.20) Volute only)	No. 4A, 70.75
No. 4A, F. K.,	No. 6, 106.50	No. 6, 100.00	No. 3, 109.50	No. 6A, 87.00
No. 4A, Sp'd K.,	(No. 6, 109.50) Lens only)	(No. 3, 112.50) Lens only)
No. 1A, F. P. K. Special,	No. 1, 47.40	(No. 4, 46.90) B. & L. Auto. only)	(No. 0, 50.85) Kodak, or B. & L. Auto. only)	(No. 3A, 35.35) B. & L. Auto. only)

All Speed Kodaks fitted with Kodak Focal Plane Shutter.

* For above outfit fitted with B. & L. Automatic Shutter deduct \$14.30, except on No. 4A Folding Kodak deduct \$16.30.

Anastigmat Lenses — Continued

Developing and Printing Outfits



EASTMAN'S A B C Developing and Printing Outfit includes every requisite for developing by the dark-room method, printing and finishing twenty-four 4 x 5, 2½ x 4¼, or 3¼ x 4¼ pictures. The outfit contains:

1 Kodak Candle Lamp,	\$0.25
1 4 x 5 Printing Frame,25
1 4 x 5 Glass for Frame,05
1 4-ounce Graduate,10
1 Stirring Rod,05
4 4½ x 5½ Developing Trays,40
5 Tubes Eastman's Special Developer,25
½ pound Kodak Acid Fixing Powder,15
½ ounce Bromide Potassium,10
2 dozen 4 x 5 Velox Paper,50
2 ounces Nepera Solution, for developing Velox,15
Instruction Book,10
	<hr/>
	\$2.35

Price complete, neatly packed, \$1.50

EASTMAN'S BULL'S-EYE DEVELOPING AND PRINTING OUTFIT, complete, for developing and printing 12 pictures 3½ x 3½. Similar to above outfit. Price, complete, neatly packed, \$1.25

BROWNIE DEVELOPING AND PRINTING OUTFIT, complete, for developing and printing 24 pictures 2¼ x 2¼. Price, complete,90

NOTE.— These outfits cannot be shipped by mail.

The Kodak Box No. 2



THE Kodak Box No. 2 contains everything for picture making by the daylight method. No dark room is necessary, and even the beginner can get good results by following the simple, explicit directions contained in the instruction book.

THE PRICE

1 No. 2 Brownie Camera,	\$2.00
1 No. 2 Brownie Developing Box,	1.00
1 Roll No. 2 Brownie Film,20
2 Brownie Developing Box Powders,05
1 one-half-lb. pkg. Kodak Acid Fixing Powder,15
1 4-oz. Graduate,10
1 Stirring Rod,05
1 No. 2 Brownie Printing Frame,15
1 Pkg. (1 doz.) 2½ x 3¼ Brownie Velox,10
2 Eastman Metol Quinol Developing Tubes,10
3 Paper Developing Trays,30
1 Doz. 2½ x 3¼ Mounts,10
1 Doz. 2½ x 3¼ Kodak Dry Mounting Tissue,05
1 Instruction Book,10
	<u>\$4.45</u>
Price complete, neatly packed,	\$4.00

Velox Paper

VELOX prints in any light, requires no dark-room for development, and permits the amateur to utilize his evening hours in print making. Its simplicity of manipulation and extreme gradation make it suitable for photographic work of every sort. Velox is divided broadly into two kinds of paper, called "Regular" and "Special" (slow and fast), each division containing a variety of surfaces.

"Regular" papers develop quickly and are best suited for negatives lacking contrast. "Special" papers develop slowly, and give soft effects from hard negatives. Use "Special" Velox for negatives producing good results on "Printing Out" paper (such as Solio), and "Regular" only with very flat negatives.

Velox Surfaces: In the "regular" class are Carbon (matte surface), Carbon double weight, Glossy, Glossy double weight, Velvet, and Velvet double weight. "Regular" Velvet Velox is semi-glossy and gives prints of exceptional beauty. This paper will give satisfactory results from very flat negatives.

In the "Special" class, the surfaces are Carbon (matte surface), Portrait (smooth matte), Portrait double weight, Rough, Rough double weight, Glossy, Glossy double weight, Velvet, and Velvet double weight.

"Special" Velvet Velox has a greater range than any of the other "Special" papers.

Royal Velox is coated on a soft mellow tinted stock, which when redeveloped affords all the soft delicacy of a rare old etching. Royal Velox is made in two grades, "Regular" and "Special" and one surface, just rough enough to produce the desired effect.

Velox Paper—Continued

THE PRICE

Size	SINGLE WEIGHT			DOUBLE WEIGHT		
	Doz.	½ Gross	Gross	Doz.	½ Gross	Gross
2¼ x 3¼	\$.15	\$.60	\$1.00	\$.20	\$.75	\$1.25
2½ x 4¼	.15	.70	1.25	.20	.90	1.55
3½ x 3½	.15	.80	1.50	.20	1.00	1.90
3¼ x 4¼	.15	.80	1.50	.20	1.00	1.90
3¼ x 5½	.15	.80	1.50	.20	1.00	1.90
4 x 5	.25	1.10	2.00	.30	1.40	2.50
* 3¼ x 6 (Stereo)	.25	1.10	2.00			
† * 3⅞ x 6½	.25	1.10	2.00			
2¼ x 7	.15	.80	1.50	.20	1.00	1.90
4¼ x 6½	.30	1.65	2.80	.40	2.05	3.50
5 x 7	.35	2.00	3.50	.45	2.50	4.40
3½ x 12	.45	2.50	4.50	.55	3.15	5.65

Velox Post Cards furnished in Regular Velvet, Special Velvet, Special Rough, Special Portrait, Glossy, and Royal, .20 1.10 2.00
 Double Post Cards, 3½ x 11 inches, .40 2.20 4.00

* Glossy only. † For use in Self-Transposing Stereo Printing Frame.

BROWNE VELOX (ONE GRADE ONLY)

2¼ x 2¼, per package 2 doz. sheets,	\$.15
2¼ x 3¼, per package 1 doz. sheets,	.10

VELOX SUNDRIES

N. A. (Non-Abrasion) Velox Liquid Developer, 4-ounce bottle (makes 20 ounces for Special, 12 ounces for Regular),	\$.25
Ditto, 16-ounce bottle,	.75
Nepera Solution, per 4-ounce bottle,	.20
Ditto, 16-ounce bottle,	.60
Nepera Capsules (for converting Nepera solution to a film or plate developer), per pkg. 1 doz.,	.15
Velox Re-Developer, for Sepia Tones, 4-ounce bottle,	.50
Ditto, 2 ounces (sufficient for 150 4 x 5 prints),	.30
Velox Liquid Hardener, per 4-ounce bottle,	.15
Ditto, 8-ounce bottle,	.25
Nepera M. Q. N. A. Tubes, box of 5 tubes,	.75
Kodak Acid Fixing Powder for fixing Velox prints, per pound,	.25
Ditto, ½ pound,	.15
Ditto, ¼ pound,	.10
Velox Amateur Printer, No. 2,	1.00
Velox Amateur Printer No. 1 (with gas pillar; adapted for electric socket),	2.00
Electric Attachment (extra). Comprising socket, plug, and 6-foot cord,	.75
Welsbach Attachment (extra). Burner, mantle, and large chimney,	1.25
Extra mantles, each,	.15
Tubing, 6-foot lengths (for connecting printer with gas supply),	.50

Kodak Papers

ANGELO PLATINUM PAPERS

Angelo Platinum Papers are exceedingly simple to handle and yield prints that are marvelous in gradation and delicacy. Made in both Black and White and Sepia.

Angelo Sepia, unlike most Sepia Platinum papers, develops in a cold solution. Angelo Platinum papers are furnished in two grades, "Smooth" and "Rough."

Size	Price Per Doz.
3½ x 3½,30
3½ x 4¼,30
4 x 5,50
3½ x 5½,50
4¼ x 6½,70
5 x 7,80

ANGELO SOLUTIONS	
Angelo Developer, for Angelo Black and White, ¼-pound package,	\$.20
Angelo Developer, for Angelo Black and White, ½-pound package,35
Angelo Sepia Solution (2-oz. bottle),35
Angelo Sepia Salts (2-oz. package),10

EASTMAN'S W. D. PLATINUM PAPER

A pure platinum paper, requiring only water development, without chemicals. Clears in water and acid. Produces effects equal in beauty to any photographic process. Packed in sealed tubes; two grades—"Smooth" and "Rough."

Size	Price Per Doz.
2¼ x 3½,	\$.15
2½ x 4¼,20
3½ x 3½,20
3½ x 4¼,25
4 x 5,35

Size	Price Per Doz.
3¼ x 5½,	\$.30
3¼ x 6 (Stereo),35
2¼ x 7,30
4¼ x 6½,45
5 x 7,60
3½ x 12,70

SOLIO PAPER

A rapid, glossy printing-out paper.

Size	Per Pkg., 2 Doz.
2½ x 2½,	\$.20
2¼ x 3¼,20
2½ x 4¼,20
3½ x 3½,20
3½ x 4¼,20
3¼ x 5½,25
4 x 5,25
3¼ x 6 (Stereo),25

Size	Per Pkg., 2 Doz.
2¼ x 7 (No. 1 Panoram-Kodak),	\$.25
4¼ x 6½,25
5 x 7,30
3½ x 12 (No. 4 Panoram-Kodak),35
Post Cards,15

SECONDS: 4 x 5 (trimmed) seconds, \$1.00 per gross.

SOLIO Combined Toning and Fixing Solution, per 8-ounce bottle, 50 cents.

Ditto, 4-ounce bottle, 30 cents; post-paid, 50 cents.

EASTMAN'S SEPIA PAPER

As simple to handle and much quicker than Blue Print Paper. Especially desirable with negatives giving sketchy effects. Packed in sealed tubes.

Size	Price Per 2 Doz.
2½ x 2½,	\$.15
2¼ x 3¼,15
2½ x 4¼,15
3½ x 3½,15
3½ x 4¼,15
3¼ x 5½,20
Post Cards,25

Size	Price Per 2 Doz.
4 x 5,	\$.20
3¼ x 6 (Stereo),20
2¼ x 7,20
4¼ x 6½,15
5 x 7,20
3½ x 12,20

Kodak Papers—Continued

EASTMAN'S "FERRO-PRUSSIATE" PAPER

A "Blue Print," that retains delicacy and detail. Packed in sealed tubes.

Size	Price Per 2 Doz.	Size	Price Per 2 Doz.
$2\frac{1}{2}$ x $2\frac{1}{2}$, \$.16	$3\frac{1}{4}$ x $5\frac{1}{2}$,	\$.20
$2\frac{3}{4}$ x $3\frac{1}{4}$,16	$3\frac{1}{4}$ x 6 (Stereo),20
$2\frac{1}{2}$ x $4\frac{1}{4}$,16	$2\frac{3}{4}$ x 7,20
$3\frac{1}{2}$ x $3\frac{1}{2}$,16	$4\frac{1}{4}$ x $6\frac{1}{2}$,30
$3\frac{1}{4}$ x $4\frac{1}{4}$,16	5 x 7,35
4 x 5,20	$3\frac{1}{2}$ x 12,40
	1 Doz.		
Post Cards, \$.15		

EASTMAN'S PERMANENT BROMIDE PAPERS

Enlargements are easily made on these papers by means of the Kodak Enlarging Camera, the Brownie Enlarging Cameras, or an improvised apparatus.

Velvet, Royal, Standard, Platino, Enameled, and Matte-Enamel.

Size	Per Doz.	Size	Per Doz.
5 x 7, \$.35	11 x 14,	\$1.60
5 x 8,40	14 x 17,	2.40
$6\frac{1}{2}$ x $8\frac{1}{2}$,60	16 x 20,	3.20
8 x 10,80	18 x 22,	4.00
10 x 12,	1.20	Other sizes in proportion.	

OZOBROME

The new process for making true carbon prints, or enlargements, without sunlight and without transferring. The print is produced entirely by chemical action set up when a Velox or Bromide print is placed in contact with a sheet of the sensitized Ozobrome Tissue. Ozobrome prints, with a choice of twelve colors, can be made either upon the original print or transferred to any suitable surface. Simple and easy to handle, beautiful results.

COLORS

1. Engraving Black.
2. Warm Black.
3. Blue Black.
4. Sepia.
5. Warm Sepia.
6. Portrait Brown.
8. Red Chalk.
9. Terra Cotta.
10. Marine Blue.
11. Sea Green.
12. Italian Green.

Per dozen, 5 x 7, \$.40	Per dozen, 8 x 10, \$.80
Ditto, $6\frac{1}{2}$ x $8\frac{1}{2}$,60	Rolls, 30 inches by 12 feet,	2.00

These are cut slightly larger than the list sizes, for convenience in working.
Ozobrome Sensitizing Powder, per package, 50 cents.

OZOBROME TRANSFER PAPER

- A. Fine white, smooth. B. Medium grain, matt. Per dozen, 5 x 7, 20 cents. Ditto, $6\frac{1}{2}$ x $8\frac{1}{2}$, 35 cents. Ditto, 8 x 10, 40 cents. Roll, 30 inches x 12 feet, \$1.30.
C. White etching. D. Toned etching. E. Stout drawing medium. Per dozen, 5 x 7, 25 cents. Ditto, $6\frac{1}{2}$ x $8\frac{1}{2}$, 40 cents. Ditto, 8 x 10, 60 cents. Roll, 30 inches x 12 feet, \$1.60.

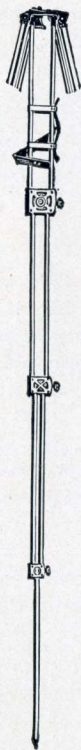
Kodak Sundries

EASTMAN'S FOLDING HEAD TRIPOD FOR 4x5 CAMERAS, OR SMALLER

BY the simplest device, all the inconveniences of the old-fashioned tripod have been overcome. Other tripods are either awkwardly bulky when closed or else the head has to be removed from the legs. In the Eastman Folding Head Tripod the head itself folds, and the tripod then makes a compact, rectangular package. No loose parts, no complicated mechanism.

The accompanying illustration shows the working in detail. The brass plate upon which the camera rests is covered with leather, thus protecting the instrument.

All of the parts being accurately made, this tripod is exceedingly rigid, in spite of its small size and light weight. The wooden parts are of selected maple. Folds in four sections; has leather handle for carrying. Length, folded, 17 inches; extended, 52½ inches; weight, 25 ounces.



SHOWING HEAD UNFOLDED
READY TO RECEIVE CAMERA



SHOWING HEAD FOLDED AND TRIPOD
CLOSED FOR CARRYING

THE PRICE

Eastman Folding Head Tripod,	\$3.50
Black Sole Leather Carrying Case,	1.50

Kodak Sundries—Continued

THE STANDARD TRIPOD

The feature of this new tripod is the automatic locking of the sections when they are extended. It is exceedingly light and compact, yet rigid when in use. Fixed, non-detachable head. Length, folded, 21 inches; extended, 53½ inches. Weight, 18 ounces. Handsome cherry finish, brass trimmings.

Price, \$1.75

THE EASTMAN TRIPOD

Three sections. No. 1, Maple, for cameras up to 6½ x 8½; weight, 2 pounds, 2 ounces.

Price, \$2.00

THE BULL'S-EYE TRIPOD

Two sections. An Aluminum revolving head holds the socket screw and seats it in place in camera when turned, thus doing away with tripod screw. Made of maple, with brass fittings. For 4 x 5 cameras, or smaller.

Price, \$1.50

THE FLEXO TRIPOD

Two sections. Has a fixed, non-detachable head. Only clear, straight grained wood is used in its construction. The metal work is of brass and all parts are accurately made.

Price, \$0.90

THE BULLET TRIPOD

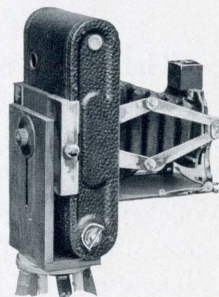
Two sections. Spruce, solid head. For small cameras.

Price, \$0.70

Kodak Sundries—Continued

FOLDING POCKET KODAK TRIPOD ADAPTER No. 1

A simple and effective device for holding either the No. 1 or No. 1A Folding Pocket Kodaks on a tripod in either horizontal or vertical position. Kodak may be reversed without removing from adapter.



THE PRICE

Price, F. P. K. Tripod Adapter, No. 1, \$.75

KODAK DRY MOUNTING TISSUE

A thoroughly tested product, by which prints can be mounted even on thin mounts without curl, no apparatus being required—just the tissue and a flatiron.

THE PRICE

Size	Price	Size	Price
3½ x 3½, 3 dozen,	\$.10	4 x 5, 2 dozen,	\$.10
3½ x 4½, 3 dozen,10	4½ x 6½, 1 dozen,10
3¼ x 5½, 2 dozen,10	5 x 7, 1 dozen,10

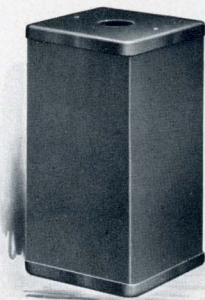
DARK-ROOM LAMPS

THE KODAK CANDLE LAMP

This lamp is well made, collapsible, of special tested ruby fabric, bound in metal frames. Metal top and bottom instantly attached. Exceedingly compact when folded. Ideal for the tourist.

No. 2 KODAK DARK-ROOM LAMP

Oil burning, fitted with both orange and ruby glass.



KODAK CANDLE LAMP

THE PRICE

Kodak Candle Lamp,	\$.25
Extra Candles for same, per dozen,30
No. 2 Kodak Dark-Room Lamp,	1.00

Kodak Sundries—Continued

EASTMAN'S KODOID PLATES

Consisting of N. C. Film sheets clipped at the edges to a black cardboard backing. Non-halation, orthochromatic.

Size	Per Doz.	Size	Per Doz.
$3\frac{1}{2} \times 3\frac{1}{2}$,	\$.35	$4\frac{1}{4} \times 6\frac{1}{2}$,	\$.90
$3\frac{1}{4} \times 4\frac{1}{4}$,45	4 x 5,65
$3\frac{1}{4} \times 5\frac{1}{2}$,65	5 x 7,	1.10

GLASS DRY PLATES

Eastman and Standard Extra Rapid		Standard Orthonon	
Size	Per Doz.	Size	Per Doz.
$3\frac{1}{2} \times 3\frac{1}{2}$,	\$.40	$3\frac{1}{4} \times 4\frac{1}{4}$,	\$.55
$3\frac{1}{4} \times 4\frac{1}{4}$,45	$3\frac{1}{4} \times 5\frac{1}{2}$,80
$3\frac{1}{4} \times 5\frac{1}{2}$,65	4 x 5,80
4 x 5,65	$4\frac{1}{4} \times 6\frac{1}{2}$,	1.20
$4\frac{1}{4} \times 6\frac{1}{2}$,90	5 x 7,	1.40
5 x 7,	1.10		
Lantern Slide Plates,55	Cover Glass for Lantern Slides,25

PRINTING FRAMES

Eastman's $3\frac{1}{2} \times 3\frac{1}{2}$, opens two-thirds,	\$.25
Eastman's $3\frac{1}{4} \times 4\frac{1}{4}$, opens two-thirds,25
Eastman's 4 x 5, opens two-thirds,25
Eastman's 5 x 7, opens two-thirds,35
Eastman's $3\frac{1}{2} \times 12$, for No. 4 Panoram-Kodak, opens in 3 sections,75
Eastman's $2\frac{1}{4} \times 7$, for No. 1 Panoram-Kodak, opens in 2 sections,30
Lofstedt Printing Frame, with an improved method of locking the springs so the paper cannot shift when opening or closing the frame, 4 x 5,35
Flexo Printing Frame, 4 x 5, opens two-thirds,20
Flexo Printing Frame, $3\frac{1}{4} \times 5\frac{1}{2}$, opens two-thirds,20
Brownie Printing Frame, No. 1, for $2\frac{1}{4} \times 2\frac{1}{4}$ Developing paper only,10
Brownie Printing Frame, No. 2, for $2\frac{1}{4} \times 3\frac{1}{4}$ Developing paper only,15
Stereo Self-Transposing Printing Frame, for making $3\frac{1}{4} \times 2\frac{1}{2}$ stereo prints without cutting negatives apart,	1.50

DEVELOPING TRAYS

"Bull's-eye" Composition, $3\frac{1}{2} \times 4\frac{1}{4}$,	\$.12	Paper, 4 x 5,	\$.10
"Bull's-eye" Composition, 4 x 5,15	Paper, 5 x 7,15
"Bull's-eye" Composition, 5 x 7,25	Hard Rubber, 4 x 5,27
"Bull's-eye" Composition, 3 x $8\frac{1}{2}$,22	Hard Rubber, 5 x 7,56
"Bull's-eye" Composition, $4\frac{1}{2} \times 14$,50		

Kodak Sundries — Continued

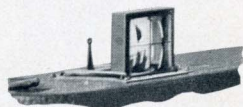
“THE MODERN WAY IN PICTURE MAKING”

The most practical and common-sense book ever published for the amateur. Superb illustrations. Nearly 200 pages. Printed on heavy coated paper. Cloth bound.

“Modern Way in Picture Making,” cloth bound, beautifully illustrated, \$1.00

DIRECT VIEW FINDER

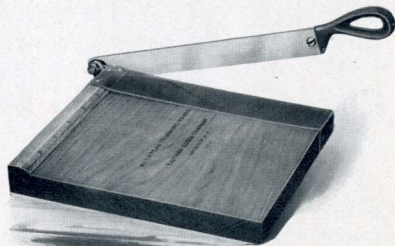
This is a special equipment for the 4A Folding Kodak, and is for quick, accurate work when Kodak is held on a level with the eyes.



Direct View Finder, \$3.00

KODAK TRIMMING BOARDS

Made of hard wood, with natural finish, have fine quality steel blades and are fitted with rule.



No. 1, capacity, 5 x 5 inches, . . . \$.40
 No. 2, capacity, 7 x 7 inches,60
 Transparent Trimming Gauge, for
 either size, extra,20

FLASH SHEETS AND FLASH CARTRIDGES

Owing to the fact that they burn slowly (in about one second) the Eastman Flash Sheets give a broad, soft light — not the glare of the ordinary flash-powder. They do not startle the subject, nor give a staring effect to the eyes.

No. 1 Flash Sheets, per package of half dozen sheets, 3 x 4, \$.25
 No. 2 Flash Sheets, per package of half dozen sheets, 4 x 5,40
 No. 3 Flash Sheets, per package of half dozen sheets, 5 x 7,60
 Eastman's Spreader Flash Cartridges, for use with pistol or fuse (price includes both fuse
 and cap), per package of half dozen,25
 Eastman's Spreader Flash Cartridge Pistol,50
 Eastman's No. 1 Flash Cartridges, per package of half dozen,60
 Ditto, No. 2,40
 Ditto, No. 3,25

Kodak Sundries—Continued

CHEMICALS

Perfect results cannot be uniformly obtained without the use of pure chemicals. Our chemicals are all carefully tested. We cannot afford to sell impure chemicals; you can afford to buy only the purest chemicals.



Eastman's Special Developer Powders, per package 5 powders, in sealed glass tubes,	\$.25
Eastman's Hydrochinon Developer Powders, per dozen,50
Ditto, per half dozen,25
Ditto, per package 5 powders, in sealed glass tubes,25
Eastman's Pyro Developer Powders, per dozen,50
Ditto, per half dozen,25
Ditto, per package 5 powders, in sealed glass tubes,25
Royal Re-Developer, per package of 6 tubes,75
Hypo Sulphite of Soda, pulverized, per pound,10
Kodak Acid Fixing Powder, per pound package,25
Ditto, per ½-pound package,15
Ditto, ¼-pound package,10
Eastman's Reducer (for reducing negatives and removing stains), per box of 5 tubes,25
Bromide Potassium, per ounce,15
Citric Acid, 4-ounce bottle,30
Solio Toning Solution, 8-ounce bottle,50
Solio Toning Solution, 4-ounce bottle (20 cents extra, post-paid),30
Solio Hardener, per 8-ounce bottle,35
Eastman's Tested Carbonate of Soda (dessicated), per 1-pound bottle,20
Eastman's Tested Sulphite of Soda (dessicated), per 1-pound bottle,30

For Tank Developer Chemicals, see page 41.

SUNDRIES

Eastman's Photo Paste, 3 oz. tube,	\$.15	Graduate, 16 ounces,	\$.20
Eastman's Photo Paste, 5 oz. tube,25	Ditto, 24 ounces,25
Eastman Thermometer,50	Ferrotypc Plate, 10 x 14, light,15
Eastman's Film Clips, 3½ inch, per pair (nickeled),25	Ditto, 10 x 14, heavy,20
Ditto, 5-inch,30	Ditto, 18 x 24, heavy,75
Ditto, 7-inch,35	Kodak Print Roller, 2 x 6-inch rubber roller, nickeled frame,50
Kodak Film Clips, 5-inch (wood), per pair,15	Flexo Print Roller, 4-inch rubber roller, black enameled frame,15
Graduate, 4 ounces,10	Eastman's Special Squeegee, 6-inch,30
Ditto, 8 ounces,15	Eastman's Special Squeegee, 8-inch,35

Japanese Water Colors, complete booklet, 15 colors,75
Japanese Sizing, for surfaces that resist water colors (glossy surfaces), per leaf,08
Separate color leaves, each,08
Set of 3 special brushes, per set,50

Albums

THE FORUM ALBUM

Flexible, Black Leather Embossed Cloth Cover.

A, 25 black leaves, or N, 25 Sepia leaves, 5½ x 7,	\$.35
B, 25 black leaves, or O, 25 Sepia leaves, 7 x 10,50
C, 25 black leaves, or P, 25 Sepia leaves, 10 x 7,50
D, 25 black leaves, or R, 25 Sepia leaves, 11 x 14,	1.25
E, 50 black leaves, 5½ x 7,50
F, 50 black leaves, 7 x 10,75
G, 50 black leaves, 10 x 7,75
H, 50 black leaves, 11 x 14,	1.50



THE ARENA ALBUM

Flexible, Finest Quality Black Grain Leather Cover.

J, 50 black leaves, or S, 50 Sepia leaves, 5½ x 7,	\$1.00
K, 50 black leaves, or T, 50 Sepia leaves, 7 x 10,	1.50
L, 50 black leaves, or U, 50 Sepia leaves, 10 x 7,	1.50
M, 50 black leaves, or W, 50 Sepia leaves, 11 x 14,	3.00

SOUVENIR POST CARD ALBUMS

Flexible, Black Leather Embossed Cloth Cover.

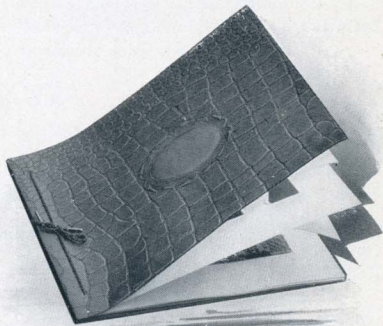
X., 25 black leaves, 10 x 7, for 100 cards,	\$.50
X. R., 25 black leaves, 11 x 14, for 200 cards,	1.50
X. T., } Flexible, Black Grain Leather Cover,	2.50
25 leaves, 11 x 14, for 200 cards, }	

ARTISTS' ALBUM

The new Artists' Album is on the loose leaf system with covers of fine alligator leather finish material. Tied with silk lacing. Panel in cover for lettering. Leaves of heavy stock, antique finish. Ribbed tissue paper bound between each leaf.

Made for both black and white, and sepia toned prints, and for all sizes of Kodak prints up to and including 5 x 7.

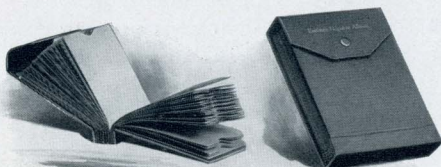
Extra leaves and tissues may be inserted when desired.



No. 1, Black leaves; No. 2, White leaves; No. 3, Sepia leaves, 5½ x 7,	\$.20
Extra leaves, either color, complete with tissue, package of 5,07
No. 4, Black leaves; No. 5, White leaves; No. 6, Sepia leaves, 7 x 10,30
Extra leaves, either color, complete with tissues, package of 5,10

Albums and Mounts

EASTMAN'S FILM NEGATIVE ALBUMS



Each album contains 100 pockets made of strong paper and consecutively numbered from 1 to 100, and an index on white paper.

Eastman's Negative Albums for 100 negatives, $3\frac{1}{2} \times 3\frac{1}{2}$, or smaller,	\$.75
Eastman's Negative Albums for 100 negatives, $3\frac{1}{2} \times 4\frac{1}{4}$, or 4×5 ,	1.00
Eastman's Negative Albums for 100 negatives, $3\frac{1}{2} \times 5\frac{1}{2}$, or smaller,	1.00
Eastman's Negative Albums for 100 negatives, 5×7 , or smaller,	1.50

VELOX POST CARD ALBUMS

On the loose-leaf, lace system. Cover of fine alligator leather finish material, embossed panel on cover for special wording.

No. 1 Golden Brown, No. 2 Naval Gray; capacity, 20 cards,	\$.25
No. 3 Golden Brown, No. 4 Naval Gray; capacity, 100 cards,60
Extra leaves, Nos. 1 and 2, per package of 5,09
Ditto, Nos. 3 and 4, per package of 5,15

STEREO MOUNTS

Size of Mount	Per 100	Per 50
$3\frac{1}{2} \times 7$; color, Queen's Gray,	\$.45	\$.25

TWO-COLOR BRISTOL BLANKS

A very desirable flexible stock mount, for Black and White and Sepia Prints. Colors, Champagne and Golden Brown, Parisian Gray and Cream White. Specify color and size of mount.

For Prints	Size of Mount	Price per Dozen	For Prints	Size of Mount	Price per Dozen
$2\frac{1}{4} \times 3\frac{3}{4}$	5 x 6	\$.12	$3\frac{1}{4} \times 5\frac{1}{2}$	$6\frac{1}{4} \times 8\frac{1}{2}$	\$.20
$2\frac{1}{2} \times 4\frac{1}{4}$	$5\frac{1}{4} \times 7$.15	4 x 5	$6\frac{3}{4} \times 8\frac{3}{4}$.20
$3\frac{1}{2} \times 3\frac{1}{2}$	6 x 6	.15	$4\frac{1}{4} \times 6\frac{1}{2}$	7 x $9\frac{1}{2}$.22
$3\frac{3}{4} \times 4\frac{1}{4}$	$5\frac{3}{4} \times 6\frac{3}{4}$.15	5 x 7	8 x 10	.25

Sold only in dozen packages.

BAYOU

DOVE-WHITE AND SEPIATONE

Very heavy bristol stock, ripple finish. Beveled plate sunk design. Straight edges. Specify color and size of mount.

For Prints	Size of Mount	Price per Dozen	For Prints	Size of Mount	Price per Dozen
$2\frac{1}{4} \times 3\frac{3}{4}$	5 x 6	\$.20	$3\frac{1}{4} \times 5\frac{1}{2}$	$6\frac{1}{4} \times 8\frac{1}{2}$	\$.30
$2\frac{1}{2} \times 4\frac{1}{4}$	$5\frac{1}{4} \times 7$.23	4 x 5	7 x $8\frac{1}{2}$.30
$3\frac{1}{2} \times 3\frac{1}{2}$	6 x 6	.23	$4\frac{1}{4} \times 6\frac{1}{2}$	7 x $9\frac{1}{2}$.30
$3\frac{3}{4} \times 4\frac{1}{4}$	$5\frac{3}{4} \times 6\frac{3}{4}$.24	5 x 7	8 x 10	.35

Sold only in dozen packages.

Kodak Mounts—Continued

BEVPLANE

Carbon Black and Scotch Gray

For Prints	Size of Mount	Per 100	Per 50	For Prints	Size of Mount	Per 100	Per 50
1½ x 2½	3¼ x 4¼	\$.60	\$.30	4 x 5	5½ x 6½	\$.90	\$.45
2½ x 3¼	4 x 5	.60	.30	4¼ x 6½	5¾ x 8	1.55	.80
2½ x 4¼	4¼ x 6	.80	.40	5 x 7	7 x 9	1.70	.85
3½ x 3½	5 x 5	.80	.40	2¼ x 7	4 x 8¾	.90	.45
3¼ x 4¼	5 x 6	.85	.45	3½ x 12	5¾ x 13¾	1.80	.90
3¼ x 5½	4¾ x 7	.90	.45				

No orders accepted for less than fifty of one kind and size.

RIVIERA

Ash Gray and White

For Prints	Size of Mount	Per 100	Per 50	For Prints	Size of Mount	Per 100	Per 50
1½ x 2	3 x 3½	\$.30	\$.15	3¼ x 4¼	4½ x 5½	\$.65	\$.35
1½ x 2½	3 x 3½	.40	.20	4 x 5	5½ x 6½	.85	.45
2¼ x 2¼	3½ x 3½	.40	.20	3¼ x 5½	5 x 7¼	.95	.50
2¼ x 3¼	3½ x 4½	.50	.25	4¼ x 6½	5¾ x 8	1.40	.70
2½ x 4¼	4½ x 5¾	.65	.35	5 x 7	7 x 9	1.50	.75
3½ x 3½	5 x 5	.65	.35				

No orders accepted for less than fifty of one kind and size.

NAPLES

Queen's Gray, Artist's Brown, and Jet Black

For Prints	Size of Mount	Per 100	Per 50	For Prints	Size of Mount	Per 100	Per 50
2¼ x 3¼	4 x 5	\$.85	\$.45	3¼ x 5½	5¼ x 7½	\$1.25	\$.65
2½ x 4¼	4¼ x 6	.90	.45	4 x 5	5½ x 6½	1.05	.55
3½ x 3½	5 x 5	.90	.45	4¼ x 6½	6¼ x 8½	1.65	.85
3¼ x 4¼	5 x 6	.95	.50	5 x 7	7 x 9	1.95	1.00

No orders accepted for less than fifty of one kind and size.

THE RIVERTON

Ash Gray—Golden Brown. Beveled Edge, dark border with handsome inlaid design

For Prints	Size of Mount	Per 100	Per 50	For Prints	Size of Mount	Per 100	Per 50
2¼ x 3¼	4 x 5	\$1.10	\$.55	3¼ x 5½	5¼ x 7½	\$1.65	\$.85
2½ x 4¼	4¼ x 6	1.25	.65	4 x 5	6 x 7	1.65	.85
3½ x 3½	5 x 5	1.25	.65	4¼ x 6½	6¼ x 8½	2.20	1.10
3¼ x 4¼	5 x 6	1.35	.70	5 x 7	7 x 9	2.75	1.40

No orders accepted for less than fifty of one kind and size.

THE BAYVIEW

Ash Gray and Golden Brown. For squeegee and unmounted prints, beveled edges, snow flake finish.

Mount consists of mat with loose back to be pasted down.

For Prints	Size of Mat	Per 100	Per 50	For Prints	Size of Mat	Per 100	Per 50
3½ x 3½	5 x 5	\$1.65	\$.85	4 x 5	6 x 7	\$2.20	\$1.10
3¼ x 4¼	5 x 6	2.00	1.00	4¼ x 6½	6¼ x 8½	2.70	1.35
3¼ x 5½	5¼ x 7½	2.20	1.10	5 x 7	7 x 9	3.10	1.55

No orders accepted for less than fifty of one kind and size.

Developing and Printing

Finishing Kodak Cartridge Films on Velox Paper	Pocket Kodak, 1½ x 2	No. 0 Folding P. K., 1½ x 2½	No. 1 Folding P. K., 2¼ x 3¼	No. 1A F. P. K. Special, No. 1A Folding P. K., No. 2A Brownie, 2½ x 4¼	No. 2 Bull's-eye, etc., 3½ x 3½	No. 3 F. P. K., No. 3 F. Brownie, etc., 3½ x 4¼	No. 3 Bull's-eye	No. 3A and 3B, 3¼ x 5½	No. 4 B. E., etc., 4 x 5	Speed Kodak, No. 4A, 4¼ x 6½, 5 Kodaks, etc., 5 x 7
Developing, Printing, and Mounting 1-Film Cartridge,	\$.90	\$.95	\$1.40	\$1.50	\$1.50	\$1.50	\$1.50	\$1.80	\$1.80	\$1.20
Developing and Printing, Unmounted,84	.89	1.28	1.38	1.38	1.38	1.40	1.68	1.05	
Developing only, each,02	.03	.04	.06	.06	.06	.08	.08	.10	.10
Printing and Mounting only, each,06	.06	.08	.08	.08	.08	.10	.10	.12½	
Printing, Unmounted only, each,05½	.05½	.07	.07	.07	.07	.09	.09	.10	.10
Developing, Printing, and Mounting, each,08	.08½	.12	.12½	.12½	.12½	.15	.15	.20	.20
Developing, and Printing, Unmounted, each,07½	.08	.11	.11½	.11½	.11½	.14	.14	.17½	.17½

Above prices cover Cartridges of 12 exposures for Pocket Kodak, No. 0 Folding, No. 1 Folding, No. 1A Folding, No. 1A Special, 3½ x 3½, No. 3 Folding, No. 4 Folding, and Nos. 2A and 3 Folding Brownies; 10 exposures for Nos. 3A and 3B, and 6 exposures for No. 4A Folding, Speed Kodak, and 5 x 7. On orders for less, 25 cents extra will be charged.

Brownie Camera, Stereo and Panoram-Kodak sizes, on Velox	No. 1 Brownie, 2¼ x 2¼	No. 2, and No. 2 F. P. Brownie, 2¼ x 3¼	No. 1 Panoram, 2¼ x 7	No. 4 Panoram, 3½ x 12	No. 2 Stereo Kodak, 3¼ x 6	No. 2 Stereo Brownie, 3¼ x 5
Developing, Printing, and Mounting 1-Film Cartridge,	\$.50	\$.70	\$1.40	\$1.75	\$1.50	\$1.50
Developing and Printing, Unmounted 1-Film Cartridge,47	.64	1.28	1.60	1.38	1.40
Developing only, each,03	.04	.08	.18	.12	.08
Printing and Mounting only, each,06	.08	.16	.20	.16	.10
Printing, Unmounted only, each,05½	.07	.14	.17	.14	.09

Above price list is for one full roll as follows: 6 exposures No. 1 and No. 2 Brownie; 10 exposures No. 2 Stereo Brownie; 6 exposures No. 2 Stereo Kodak; 6 exposures No. 1 Panoram, or 5 exposures No. 4 Panoram. On orders for less than a full roll, as above, 25 cents extra will be charged.

Prints are furnished unmounted in all cases, unless otherwise specified in order.
 Unmounted prints on "Double Weight" Velox will be billed at mounted rates.
 All prints are mounted with Kodak Dry Mounting Tissue, and therefore do not curl.

ENLARGEMENTS

	Each	Per doz.		Each
4¼ x 6½, on card,	\$.35	\$3.00	10 x 12, on card,	\$1.00
6½ x 8½, on card,50	5.00	11 x 14, on card,	1.25
8 x 10, on card,75		14 x 17, on card,	1.50

Larger sizes in proportion.

Lantern Slides,50 \$5.00
 No extra charge for Sepia Tones on Bromide enlargements.

Where the kind of paper is not specified we will make the enlargements upon the paper which, in our judgment, is best suited to the negative and the subject.
 Small extra charge for double or triple mounting.

Specimen Prints

A SPECIMEN photograph made with any Kodak (not larger than 4 x 5) will be sent to any address in the United States upon receipt of four cents in stamps; No. 4A Folding Kodak, 4A Speed Kodak, eight cents; Stereo, eight cents; No. 4 Panoram-Kodak, twenty cents.

TOURISTS

Travelers can always obtain fresh supplies of film at short notice at any one of the following addresses:

LONDON — Kodak, Limited, 57-61 Clerkenwell Road, E. C.; 60 Cheapside, E. C.; 115 Oxford Street, W.; 171-173 Regent Street, W.; 59 Brompton Road, S. W.; 40 Strand, W. C.

LIVERPOOL — Kodak, Limited, 96 Bold Street.

GLASGOW — Kodak, Limited, 72-74 Buchanan Street.

PARIS — Kodak, Société Anonyme Française, Avenue de l'Opera, 5; Place Vendome, 4.

LYONS — Kodak Société Anonyme Française, 26-28 Rue de la Republique; 11 Rue du Palais-Grillet.

NICE — Kodak Société Anonyme Française, 34 Avenue de la Gare.

BERLIN — Kodak Gesellschaft, m. b. H., Friedrichstrasse, 16; Kodak Galerie, Leipzigerstrasse, 114; Unter den Linden, 26.

BRUSSELS — Kodak, Limited, 36 Rue du Fosse aux Loups; 59 Montagne de la Cour.

VIENNA — Kodak Gesellschaft, m. b. H., 29 Graben.

ST. PETERSBURG — Kodak, Limited, Bolschaja Konjuschennaja 19.

MOSCOW — Kodak, Limited, 15, 16 Petrovka.

MILAN — Societa Kodak, 10 Via Vittore Pisani; 34 Corso Vittorio Emanuele.

TERMS

THE prices in this catalogue are strictly net, except to regular dealers who carry our goods in stock. For the convenience of our customers we recommend that they make their purchases from a dealer in photographic goods, as by so doing they can save both time and express charges.

EASTMAN KODAK CO.,
Rochester, N. Y.





ROLL, CRAWFORD BRENDAMOUR
COMPANY

17 EAST FIFTH STREET
CINCINNATI, OHIO