

KODAK

## **The Digitized Kodak Catalog Project (1886 - 1941): A Very Brief History**

Most camera collectors at some point in their collecting careers pass through a Kodak phase - some never come out of it. And if there ever was one name that came to be associated with both cameras and collecting, it was Kodak.

George Eastman received his first patent (for coating dry plates) and bought his first manufacturing facility in 1880, and in 1881 he started the Eastman Dry Plate Company. In 1886 he received a patent for the near-mythical Eastman Detective Camera, but it wasn't until 1888 that the first camera bearing the name "Kodak" was introduced.

One of the nice things about collecting Kodak is that the product line is pretty well known, and because the company produced annual catalogs for many years, collectors can be reasonably sure of what they're looking at, when it was made, the variations and so on - presuming that they have access to either the appropriate catalog, or a number of the many books which document Kodak, each to some greater or lesser extent.

But what would be really nice would be to have a complete set of Kodak catalogs in an easily accessible form and readily available. And since the advent of portable computing devices (PC, Macintosh, etc.) that's been possible - except for the difficulty of assembling a complete set of Kodak catalogs in one spot and then scanning them and making the results available.

The idea of digitizing a complete set of Kodak catalogs has kicked around the collecting community for many years. It's been proposed on a number of online forums, during meetings of various photohistory groups, and for years there have been many incomplete "Kodak CDs" on eBay but at best, they only contained a few catalogs - whatever the owner had available. But assembling a complete set of catalogs, then scanning and processing perhaps 3,000 to 4,000 pages, was a daunting task - if not completely overwhelming - and nothing ever came of it.

Until now.

In early 2010, the idea came up again, but this time we - "we" as in "the collecting community" - were lucky. A number of collectors were willing to loan their catalogs to this project and a couple of insane - wait, let's call them "dedicated" - dedicated enthusiasts - neither of whom collected Kodak, but both of whom enjoyed the challenge of such a project - were willing to put in the time and effort to scan and pull together the entire set of catalogs into a full-blown Kodak Catalog Digital Library.

Our initial objective was to include just the annual amateur catalogs, but it turns out that many cameras only appear in certain professional and specialty catalogs. We included as many of those as we could obtain so that almost every Kodak camera made in the US, Canada and Europe, would be documented - at least up to about 1941. After that, it becomes much more difficult as Kodak stopped producing annual catalogs as their product line became increasingly more diversified.

However, even with the additional "non-amateur" catalogs, we weren't completely successful in illustrating "every" camera Kodak ever made. There are an elusive few that might appear in specialty catalogs that we simply couldn't track down. If you can't find one of those odd cameras, that's no doubt why. We may do a revision at some point in the future if someone is willing to loan us a catalog that includes a camera that isn't already recorded.

In this project, a total of 67 catalogs were used from 1886 through 1941 including a number of professional and dealer catalogs, and in some years, two or even three different catalogs to cover all the bases. With the cooperation of a number of dedicated collectors, we were able to pull together all those catalogs and in June 2010, the project started in earnest.

By November 2010, we had scanned everything we needed and eventually all 67 catalogs were then reassembled as image folders and converted to the universally accepted PDF format and finally, converted into individually searchable PDFs which could then be searched globally as a collection.

For those of you interested in the statistics: about 200 hours of scanning time (we never want to hear that sound again), 67 catalogs and 3,908 page scans - which generated 7,917 original and processed images - and 11.4 GB of disk space. Additionally, another 100+ hours of technical development time was needed to convert the digital catalogues into a fully searchable "knowledgebase" that could be launched from most any standard web browser.

The overwhelming number of catalogs was loaned to us by that most remarkable of Kodak collectors, Charlie Kamerman of Eagle Creek, Oregon. Without Charlie, it's very doubtful that this project could even have been attempted.

But as it turned out, even Charlie didn't have all the publications that were needed, but he was able to track down the five that he lacked and was able to secure either a copy or high resolution images that we could work with. And so, our thanks to the contributors of the catalogs and scans that we used:

Charlie Kamerman for the vast majority of catalogs used and all his help,  
Steve Shoet for loaning a variety of test catalogs,  
Ryerson University (Toronto) for the 1886 Eastman Catalog  
George Layne for the 1890 New Kodaks Catalog,  
Mike Kessler for the 1891 Dealer Display Catalog,  
Ralph London for the 1893 UK Catalog,  
Michael Pritchard for the 1897 UK Catalog.

The digital side of the project - also known as "all of the work" - was done by Rob Niederman of Medina, Minnesota, and Milan Zahorcak of Tualatin, Oregon. Remarkably we're still friends and in a few years, we'll probably be able to talk about this project rationally.

And there you have it, a more-or-less done deal. We're fairly sure that it isn't quite perfect, and expect there will be some carping about something or other; but all-in-all, we believe this to be a pretty good product and can now move on to something else.

Our thanks to all of those involved.

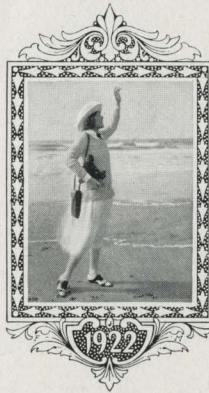
Rob Niederman  
Milan Zahorcak

Fall, 2011



# KODAKS

## AND KODAK SUPPLIES



EASTMAN KODAK COMPANY  
ROCHESTER, N. Y., *The Kodak City*



FROM A NEGATIVE MADE WITH THE NO. 3A AUTOGRAPHIC KODAK WITH  
KODAK ANASTIGMAT LENS,  $f/7.7$  AND KODAK PORTRAIT ATTACHMENT

# Exclusively Eastman

ORDINARY photography gives you one thing—the picture. Autographic photography gives you three things—picture, date and title.

Obviously enough, autographic photography is possible only through an autographic camera, and this feature is exclusively Eastman.

With an Autographic Kodak or Autographic Brownie, used with autographic film, the date and title of the picture may be photographically imprinted on the negative margin at the time of the exposure—a permanent identifying record.

Without interfering with the usual operation of the Kodak in any way, without entailing extra expense of any kind, the autographic feature stands ready to render you important service at all times and in connection with at least two types of pictures, a service that is invaluable.

PICTURES OF CHILDREN. “How old was Bobbie then?” You yourself have often asked this question as you looked at pictures of the children. The date is half the interest. The autographic record has the answer—authentic, authoritative.

TRAVEL PICTURES. Strange faces—strange places. “Where was it made—and when?” Memory is vague—uncertain. The autographic record—authentic, authoritative.

All the folding Kodaks and Brownies, as you will note in the pages that follow, are autographic, and autographic film sells at the same price as ordinary film.

ROCHESTER, NEW YORK  
*The Kodak City*

EASTMAN KODAK COMPANY

# Vest Pocket Autographic Kodak

(Fixed Focus Model)

FROM pocket to picture is a matter of seconds with this efficient little camera. Slip it out, pull it open, sight through the finder and "click" the picture is made. The Vest Pocket Kodaks are always in focus, always with you, always ready.

Despite their compactness—and a glance at the accompanying illustration shows you how amazingly small they are—the Vest Pocket Kodaks are thoroughly equipped cameras, in a practical photographic sense. They make good pictures of a satisfying size,  $1\frac{5}{8} \times 2\frac{1}{2}$  inches—such excellent pictures in fact that enlargements may be made to post-card size, or even larger—and every essential for good picture-making is included in their equipment. Compactness and lightness have been secured through clever design and careful workmanship with no sacrifice of optical efficiency.

The presence of the Autographic feature fits the Vest Pocket Kodak for a photographic note book—ready to catch and hold the story-telling incidents of everyday life—to keep your diary for you.

It is particularly fitting that such a popular model as the V. P. K. should be offered in a variety of equipments to meet all requirements as to lens, finish and price. Special attention, however, should be directed to the Vest Pocket Autographic



VEST POCKET KODAK  
REGULAR

Actual size of all models  
when closed



Kodak *Special* with the famous, sharp-cutting Kodak Anastigmat lens, *f.7.7*, an ideal equipment for a camera of this type.

All the Vest Pocket Kodaks are smart in appearance. The Regulars have a stamped metal body; the *Special* is of aluminum construction with a fine grain leather Morocco covering.

### Details

Size of pictures:  $1\frac{5}{8} \times 2\frac{1}{2}$  inches. Size of Kodak:  $1 \times 2\frac{3}{8} \times 4\frac{3}{4}$  inches. Capacity without reloading: 8 exposures. Weight: 11 ounces. Lenses: *Regular*—Fixed focus only; Meniscus Achromatic or Rapid Rectilinear,  $3\frac{1}{2}$ -inch focus. *Special*—Fixed focus model; Kodak Anastigmat, *f.7.7*,  $3\frac{1}{2}$ -inch focus. Kodak Ball Bearing Shutter No. 0 with finger release only (cable release attachment sold separately). Speeds:  $\frac{1}{25}$ ,  $\frac{1}{50}$  second, and time and "bulb" actions. Brilliant finder; reversible for vertical or horizontal pictures. All metal body: *Regular*—Finish, Japan Crystal. *Special*—Covered with Morocco grain leather. Metal parts finished in nickel and black enamel. Black bellows. Autographic feature.

### Prices

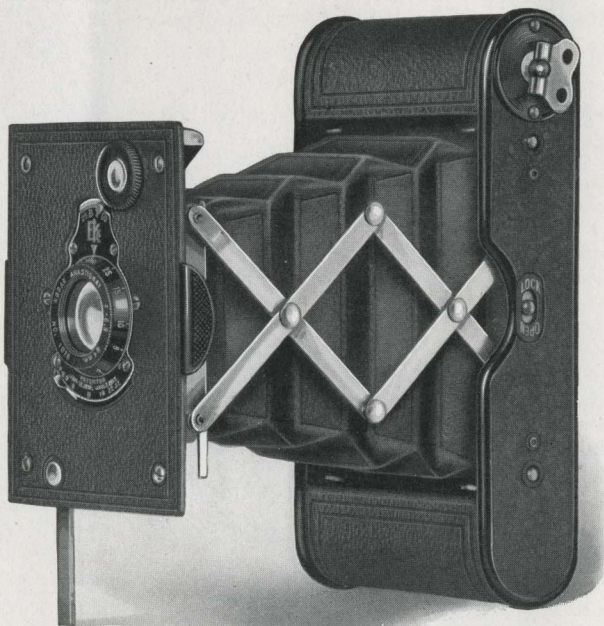
Vest Pocket Autographic Kodak (regular model) Meniscus Achromatic Lens and Kodak Ball Bearing Shutter . . . . .	\$ 6.50
Ditto, with Rapid Rectilinear Lens, speed U. S. 8 . . . . .	8.00
Vest Pocket Autographic Kodak, <i>Special</i> (fixed focus model), Kodak Anastigmat Lens, <i>f.7.7</i> , and Kodak Ball Bearing Shutter . . . . .	12.00
Leather Case for V. P. Kodak . . . . .	1.00
Soft Leather Carrying Bag . . . . .	1.50
Grain Leather Case . . . . .	1.50
Belt Carrying Case (russet leather) . . . . .	1.50
Khaki Belt Carrying Case . . . . .	.75
Autographic Film Cartridge, 8 exposures, $1\frac{5}{8} \times 2\frac{1}{2}$ (No. A 127) . . . . .	.25
Vest Pocket Cable Release Attachment (see page 60) . . . . .	.50
Vest Pocket Kodak Tripod Adapter (see page 58) . . . . .	.50
Kodak Portrait Attachment (see page 39) . . . . .	.75
Kodak Self Timer (see page 40) . . . . .	1.25

*The prices of cameras and film include the Excise Tax*

# Vest Pocket Autographic Kodak, Special

(Focusing Model)

ANY Vest Pocket Kodak is small enough to palm—yet big enough to perform. Here is a model, however, that has as an added distinction a radically different focusing device that by a slight turn of the lens flange brings the camera in sharp focus over a wide range of distances—ten in all—from 3 feet to 100. No racking of the bellows back and forth—the correct focus is always at your finger tips.



*If it isn't an Eastman, it isn't a Kodak*

The ability to focus sharply at three feet is a unique feature of this camera. Close-ups, head and shoulder portraits, for example, may be readily secured without the use of the Portrait Attachment as you will note in the accompanying illustration.

Of even more importance, however, is the wide flexibility of focus which not only makes such portraits possible but permits the sharp-cutting Kodak Anastigmat lens, *f.6.9* to register full value. This Vest Pocket Kodak *Special* has a definite individuality. No other camera is quite like it.



MADE AT THREE FEET WITH  
REGULAR LENS EQUIPMENT  
(Actual Size)

### Details

Size of pictures:  $1\frac{5}{8} \times 2\frac{1}{2}$  inches. Size of Kodak:  $1 \times 2\frac{3}{8} \times 4\frac{3}{4}$  inches. Capacity without reloading: 8 exposures. Weight: 11 ounces. Adjustable focus. Lens: Kodak Anastigmat, *f.6.9*,  $3\frac{1}{2}$ -inch focus. Kodak Ball Bearing Shutter No. 0 with finger release only (cable release attachment sold separately). Speeds:  $\frac{1}{25}$ ,  $\frac{1}{50}$  second, and time and "bulb" actions. Brilliant finder; reversible for vertical or horizontal pictures. All metal body covered with Morocco grain leather. Metal parts finished in nickel and black enamel. Black bellows. Autographic feature.

### Prices

Vest Pocket Autographic Kodak, <i>Special</i> (focusing model), Kodak Anastigmat Lens, <i>f.6.9</i> , and Kodak Ball Bearing Shutter . . . . .	\$18.00
Leather Case for V. P. Kodak . . . . .	1.00
Soft Leather Carrying Bag . . . . .	1.50
Grain Leather Case . . . . .	1.50
Belt Carrying Case (russet leather) . . . . .	1.50
Khaki Belt Carrying Case . . . . .	.75
Autographic Film Cartridge, 8 exposures, $1\frac{5}{8} \times 2\frac{1}{2}$ (No. A 127) . . . . .	.25
Vest Pocket Cable Release Attachment (see page 60) . . . . .	.50
Vest Pocket Kodak Tripod Adapter (see page 58) . . . . .	.50
Kodak Self Timer (see page 40) . . . . .	1.25

*The prices of cameras and film include the Excise Tax*

# No. 1 Pocket Kodak

Series II

(Ready June 1)

A NEW Kodak—a fact that becomes emphatically apparent as soon as the instrument is opened. Instead of two operations—pulling down the camera bed and pulling out the lens and bellows—through the agency of the Self Erecting Front the lens



*If it isn't an Eastman, it isn't a Kodak*

springs into position as soon as the bed is dropped. Release the catch, give one sharp pull—and, inasmuch as the lens has a fixed focus, you're ready for the picture.

The self-erecting feature clips valuable seconds off the picture preliminaries.

The lens is carefully tested; the shutter, Kodak Ball Bearing, with adjustable speeds of  $\frac{1}{25}$ ,  $\frac{1}{50}$  and  $\frac{1}{100}$  of a second, is reliable and accurate, and the autographic attachment is countersunk so that the hand may have the flat surface of the camera back as support while the date and title are noted.

The No. 1 Pocket Kodak, Series II, is swift in action, light in weight, compact to the degree that puts it in your pocket with space to spare—in short gives you pictures—good pictures of  $2\frac{1}{4} \times 3\frac{1}{4}$  size, with a convenience unknown heretofore.

### Details

Size of pictures:  $2\frac{1}{4} \times 3\frac{1}{4}$  inches. Size of Kodak:  $1\frac{5}{16} \times 3\frac{1}{16} \times 6\frac{7}{16}$  inches. Capacity without reloading: 6 exposures. Weight: 15 ounces. Fixed focus only with single Achromatic Lens. Shutter: Kodak Ball Bearing No. 1 with finger release. Speeds:  $\frac{1}{25}$ ,  $\frac{1}{50}$ ,  $\frac{1}{100}$  second, and time and "bulb" actions. Brilliant finder; reversible for vertical or horizontal pictures. Aluminum body covered with Levant grain leather. Metal parts finished in nickel and black enamel. Black bellows. Autographic feature. Two tripod sockets.

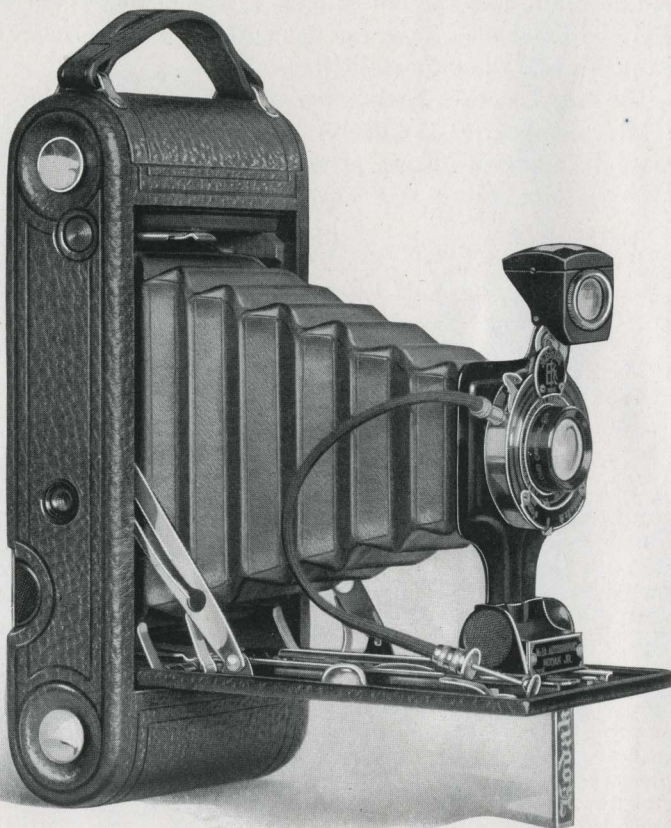
### Prices

No. 1 Pocket Kodak, Series II, with single Achromatic Lens and Kodak Ball Bearing Shutter . . . . .	\$13.50
Black Sole Leather Case, with strap . . . . .	3.25
Autographic Film Cartridge, 6 exposures (No. A 120) . . . . .	.25
Kodak Portrait Attachment (see page 39) . . . . .	.75
Kodak Self Timer (see page 40) . . . . .	1.25

*The prices of cameras and film include the Excise Tax*

## Nos. 1 and 1A Autographic Kodak Juniors

THEY are simple to work, easy to pocket, inexpensive to buy—that's why they're Juniors. That's why, too, the Nos. 1 and 1A Autographic Kodak Juniors are among the most popular models of the Kodak line.



1A JR. MODEL

*If it isn't an Eastman, it isn't a Kodak*

Both offer the choice of fixed or adjustable focus and have the same lens equipments. Both have the same highly efficient shutter with cable release—and the autographic feature by which you make the record complete, and both are handsome in design and finish and durable in construction.

They differ as follows: No. 1A takes slightly wider and much longer pictures and is a larger camera with larger film capacity and greater focal length lens than No. 1. No. 1A permits snapshots of  $\frac{1}{25}$ ,  $\frac{1}{50}$  and  $\frac{1}{100}$  second, with all lens equipments, while No. 1 has speeds of  $\frac{1}{25}$  and  $\frac{1}{50}$  second only, except with the Kodak Anastigmat, *f.7.7* lens, with which it has also the  $\frac{1}{100}$  speed.

These compact cameras have all the essentials for good picture making.

### Details

Size of pictures: No. 1,  $2\frac{1}{4} \times 3\frac{1}{4}$  inches; No. 1A,  $2\frac{1}{2} \times 4\frac{1}{4}$  inches. Size of Kodak: No. 1,  $1\frac{7}{8} \times 3\frac{5}{8} \times 6\frac{5}{8}$  inches; No. 1A,  $1\frac{5}{8} \times 3\frac{3}{4} \times 8$  inches. Capacity: No. 1, 6 exposures; No. 1A, 12 exposures. Weight: No. 1,  $21\frac{1}{2}$  ounces; No. 1A,  $27\frac{1}{2}$  ounces. Focus: Fixed (with Meniscus Achromatic lens only); or Adjustable (with any listed lens). Lenses: Meniscus Achromatic; Rapid Rectilinear—No. 1,  $4\frac{1}{4}$ -inch focus, No. 1A,  $5\frac{1}{4}$ -inch focus; or Kodak Anastigmat, *f.7.7*—No. 1,  $4\frac{1}{8}$ -inch focus, No. 1A,  $5\frac{1}{4}$ -inch focus. Kodak Ball Bearing Shutter with cable and finger release. Speeds: No. 1,  $\frac{1}{25}$  and  $\frac{1}{50}$  second; with Kodak Anastigmat, *f.7.7* Lens,  $\frac{1}{25}$ ,  $\frac{1}{50}$  and  $\frac{1}{100}$  second; No. 1A,  $\frac{1}{25}$ ,  $\frac{1}{50}$  and  $\frac{1}{100}$  second. Both with time and "bulb" actions. Brilliant finder; reversible for vertical or horizontal pictures. Body covered with fine seal grain leather. Tripod sockets. Metal parts finished in nickel and black enamel. Black bellows. Autographic feature.

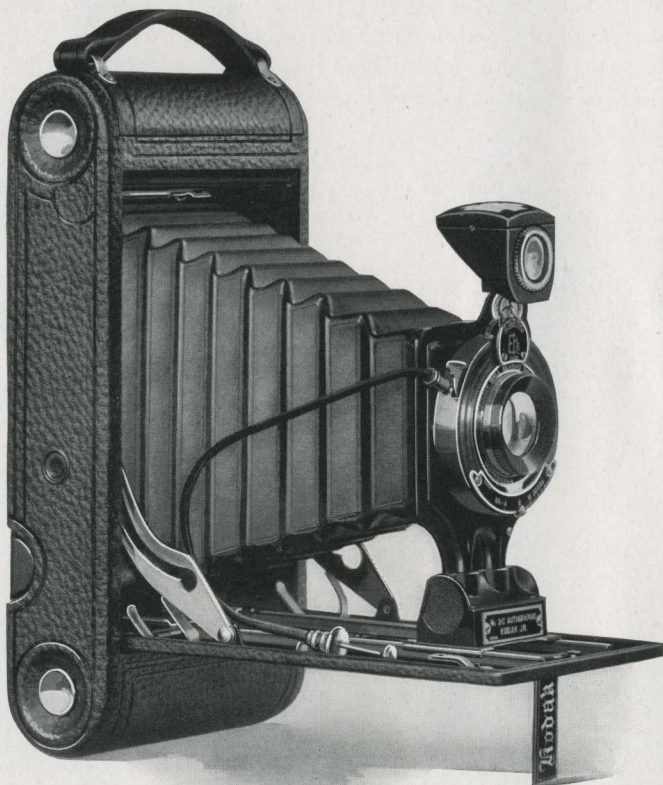
### Prices

	No. 1	No. 1A
Autographic Kodak Junior (fixed focus) Meniscus Achromatic Lens and Kodak Ball Bearing Shutter . . . . .	\$12.00	\$13.00
Autographic Kodak Junior (focusing model, with scale), Meniscus Achromatic Lens and Kodak Ball Bearing Shutter . . . . .	12.00	13.00
Ditto, with Rapid Rectilinear Lens . . . . .	14.00	15.00
Ditto, with Kodak Anastigmat Lens, <i>f.7.7</i> . . . . .	19.00	20.00
Black Sole Leather Case, with strap . . . . .	3.50	3.50
Soft Leather Bag, with strap . . . . .	2.00	2.25
Autographic Film Cartridge, 12 exposures (No. A 116) for No. 1A . . . . .		.60
Ditto, 6 exposures (No. A 120) for No. 1; (No. A 116) for No. 1A . . . . .	.25	.30
Kodak Portrait Attachment (see page 39) . . . . .	.75	.75
Kodak Self Timer (see page 40) . . . . .	1.25	1.25

*The prices of cameras and film include the Excise Tax*

## No. 2C Autographic Kodak Junior

THIS is the camera that introduced a new-size picture to amateur photography— $2\frac{1}{8} \times 4\frac{1}{8}$  inches. The 2C was a strikingly successful model from the very start, not only because photographically and mechanically it squared with every reasonable requirement but because this new size picture won instant and universal favor.



*If it isn't an Eastman, it isn't a Kodak*



The shape fits the view—whether the camera is held vertically for portraits or horizontally for landscape and street scenes. The finished print is all picture—and trimming is rarely necessary.

Size of picture considered, the 2C Junior is a remarkably light, compact camera. There's room for it in the topcoat pocket.

With an automatic shutter fast enough to record the usual moving objects without blur, adjustable focus giving a desirable range of distances, the autographic feature to tell *who* and *what* and *when*, ample focal length to give good perspective, the 2C Junior is in every sense a desirable camera.

Especial attention is called to this camera equipped with the Kodak Anastigmat, *f.7.7* lens and Ilex Universal Shutter with seven adjustable speeds from 1 to  $\frac{1}{100}$  second, as well as "time and "bulb" actions.

### Details

Size of pictures:  $2\frac{7}{8} \times 4\frac{7}{8}$  inches. Size of Kodak:  $1\frac{3}{4} \times 4\frac{3}{8} \times 8\frac{3}{4}$  inches. Capacity without reloading: 10 exposures. Weight: 34 ounces. Adjustable focus only; with automatic focusing lock. Lenses: Meniscus Achromatic; Rapid Rectilinear,  $5\frac{1}{2}$ -inch focus; or Kodak Anastigmat, *f.7.7*,  $5\frac{1}{2}$ -inch focus. Kodak Ball Bearing Shutter, with cable and finger release. Speeds:  $\frac{1}{25}$ ,  $\frac{1}{50}$  and  $\frac{1}{100}$  second, and time and "bulb" actions. Ilex Universal Shutter, with anastigmat equipment only. Speeds: 1,  $\frac{1}{2}$ ,  $\frac{1}{4}$ ,  $\frac{1}{10}$ ,  $\frac{1}{25}$ ,  $\frac{1}{50}$ ,  $\frac{1}{100}$  second with time and "bulb" actions. Brilliant finder; reversible for vertical or horizontal pictures. Back and bed of aluminum; covered with fine seal grain leather. Metal parts finished in nickel and black enamel. Black bellows. Autographic feature. Two tripod sockets.

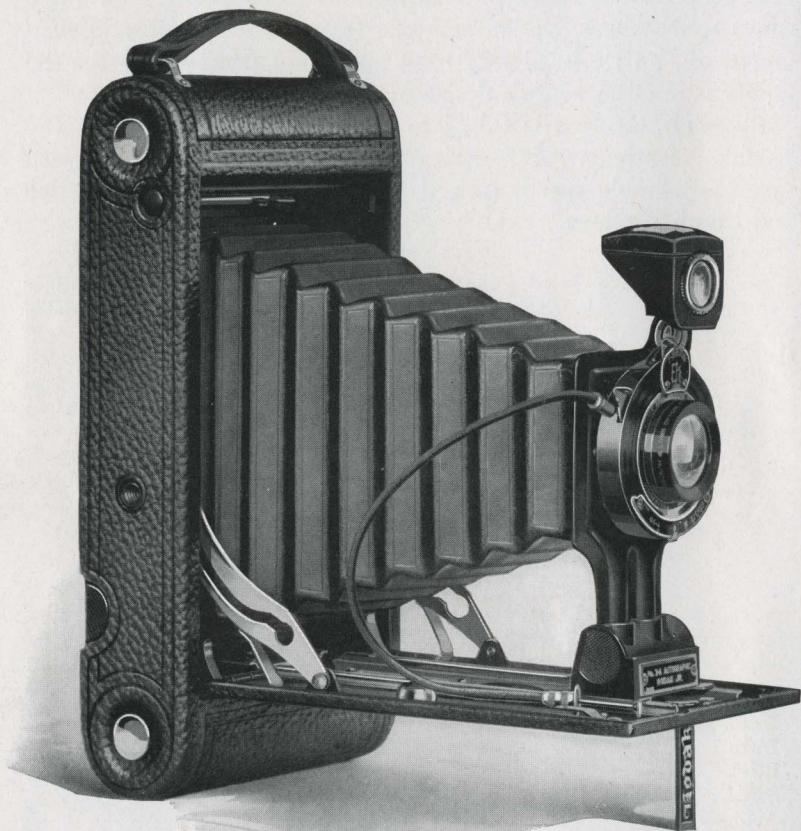
### Prices

No. 2C Autographic Kodak Junior, with Meniscus Achromatic Lens and Kodak Ball Bearing Shutter . . . . .	\$16.00
Ditto, with Rapid Rectilinear Lens . . . . .	18.00
Ditto, with Kodak Anastigmat, <i>f.7.7</i> Lens . . . . .	23.00
Ditto, with Kodak Anastigmat, <i>f.7.7</i> Lens and Ilex Universal Shutter . . . . .	27.00
Black Sole Leather Case, with strap . . . . .	4.00
Soft Leather Carrying Bag, with strap . . . . .	2.50
Autographic Film Cartridge, 10 exposures (No. A 130) . . . . .	.75
Ditto, 6 exposures . . . . .	.45
Kodak Portrait Attachment (see page 39) . . . . .	.75
Kodak Self Timer (see page 40) . . . . .	1.25

*The prices of cameras and film include the Excise Tax*

## No. 3A Autographic Kodak Junior

WHILE the 3A picture ( $3\frac{1}{4} \times 5\frac{1}{2}$  inches—post-card size) is the largest size practical in hand photography, generous negative area has been secured without resorting to bulk in the



*If it isn't an Eastman, it isn't a Kodak*

camera itself. The 3A has long been a favorite of the tourist—and the tourist chooses wisely—and well.

Like any Junior, the 3A is easily operated. Although the equipment is anything but meagre, it is essential equipment and as such readily understood. With the 3A Junior good pictures are easily possible right off the “click.”

The 3A offers a choice of three lenses, Meniscus Achromatic, Rapid Rectilinear and Kodak Anastigmat, *f.7.7*. All are honestly made and carefully tested but the anastigmat advantages—sharpness and definition—that come with the Kodak Anastigmat are well worth the small advance in price.

Particular attention is directed to the fact that the choice of equipment as indicated below includes Kodak Anastigmat lens, *f.7.7* and Ilex Universal Shutter with seven adjustable speeds, 1 to  $\frac{1}{100}$  second, as well as time and “bulb” actions.

### Details

Size of pictures:  $3\frac{1}{4} \times 5\frac{1}{2}$  inches. Size of Kodak:  $1\frac{1}{8} \times 5\frac{1}{8} \times 9\frac{3}{4}$  inches. Capacity without reloading: 10 exposures. Weight: 37 ounces. Adjustable focus only; with automatic focusing lock. Lenses: Meniscus Achromatic; Rapid Rectilinear,  $6\frac{3}{4}$ -inch focus; or Kodak Anastigmat, *f.7.7*,  $6\frac{3}{4}$ -inch focus. Kodak Ball Bearing Shutter No. 2, with cable and finger release. Speeds:  $\frac{1}{25}$ ,  $\frac{1}{50}$  and  $\frac{1}{100}$  second, and time and “bulb” actions. Ilex Universal Shutter with anastigmat equipment only. Speeds: 1,  $\frac{1}{2}$ ,  $\frac{1}{5}$ ,  $\frac{1}{10}$ ,  $\frac{1}{25}$ ,  $\frac{1}{50}$ ,  $\frac{1}{100}$  second with time and “bulb” actions. Brilliant finder; reversible for vertical or horizontal pictures. Back and bed of aluminum, covered with fine seal grain leather. Metal parts finished in nickel and black enamel. Black bellows. Autographic feature. Two tripod sockets.

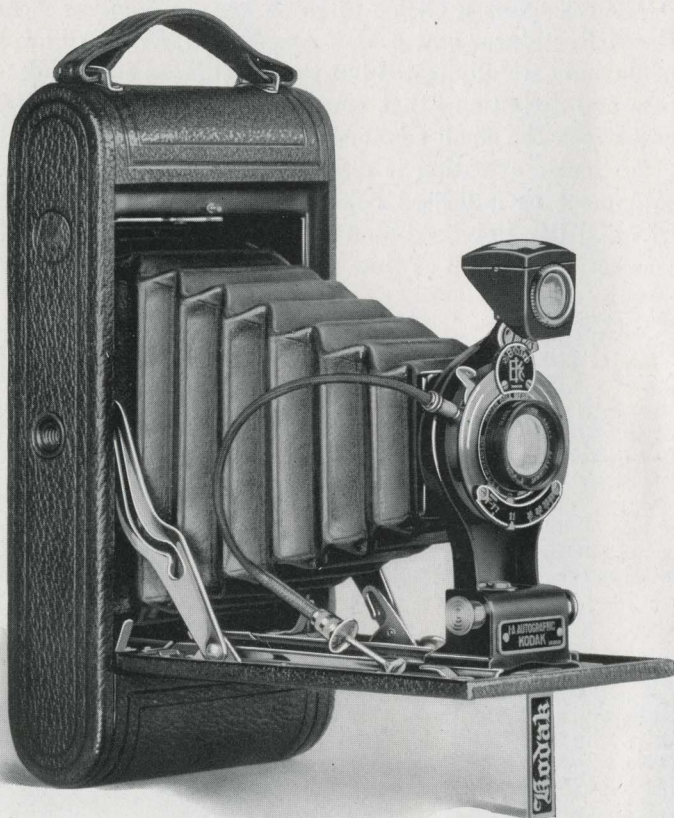
### Prices

No. 3A Autographic Kodak Junior, with Meniscus Achromatic Lens and Kodak Ball Bearing Shutter . . . . .	\$17.50
Ditto, with Rapid Rectilinear Lens . . . . .	20.00
Ditto, with Kodak Anastigmat Lens, <i>f.7.7</i> . . . . .	25.00
Ditto, with Kodak Anastigmat Lens, <i>f.7.7</i> and Ilex Universal Shutter . . . . .	29.00
Black Sole Leather Carrying Case, with strap . . . . .	4.25
Soft Leather Carrying Bag . . . . .	3.00
Autographic Film Cartridge, 10 exposures (No. A 122) . . . . .	.90
Ditto, 6 exposures . . . . .	.55
Kodak Portrait Attachment (see page 39) . . . . .	.75
Kodak Self Timer (see page 40) . . . . .	1.25

*The prices of cameras and film include the Excise Tax*

## No. 1A Autographic Kodak

IF you looked at this model at your Kodak dealer's you would be quite apt to say to yourself, "That's an expensive camera." Quality is usually associated with price and the 1A Regular looks



*If it isn't an Eastman, it isn't a Kodak*

and acts quality from lens to camera back. A glance at the price list below will reassure you, however. Even with the sharp-cutting Eastman-made Kodak Anastigmat lens, the cost is emphatically moderate.

The pictures it makes are  $2\frac{1}{2} \times 4\frac{1}{4}$  inches in size, neither too large nor too small for average requirements—and their shape is pleasing.

Simplicity of operation is assured by means of the automatic ball-bearing shutter and there are no complicating features. Throughout this model strict attention has been paid to perfection of details—from artistic design to mechanical construction.

The body is of aluminum, combining lightness and strength, and is covered with Levant grain leather, which is both durable and handsome.

#### Details

Size of pictures:  $2\frac{1}{2} \times 4\frac{1}{4}$  inches. Size of Kodak:  $1\frac{5}{8} \times 3\frac{3}{4} \times 8$  inches. Capacity without reloading: 12 exposures. Weight: 27 ounces. Adjustable focus only, with automatic focusing lock. Lenses: Rapid Rectilinear,  $5\frac{1}{4}$ -inch focus; or Kodak Anastigmat, *f.7.7*,  $5\frac{1}{4}$ -inch focus. Kodak Ball Bearing Shutter with cable and finger release. Speeds:  $\frac{1}{25}$ ,  $\frac{1}{50}$  and  $\frac{1}{100}$  second, and time and “bulb” actions. Brilliant finder; reversible for vertical or horizontal pictures. Back and bed of aluminum, covered with Levant grain leather. Metal parts finished in nickel and black enamel. Black bellows. Autographic feature. Two tripod sockets.

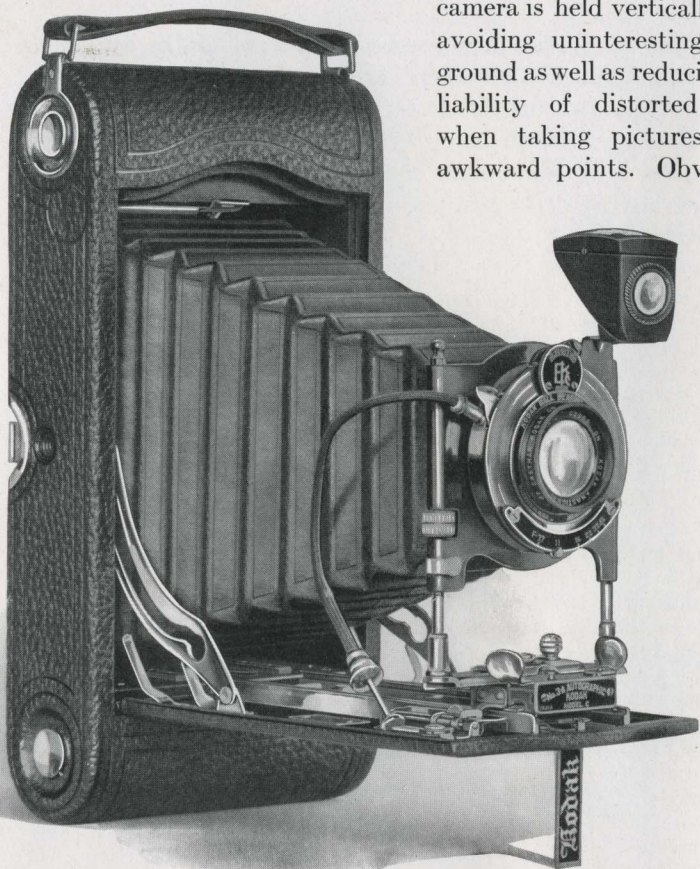
#### Prices

No. 1A Autographic Kodak, with Rapid Rectilinear Lens and Kodak Ball Bearing Shutter . . . . .	\$19.00
Ditto, with Kodak Anastigmat Lens, <i>f.7.7</i> . . . . .	24.00
Black Sole Leather Case, with strap . . . . .	3.50
Soft Leather Carrying Bag, with strap . . . . .	2.25
Autographic Film Cartridge, 12 exposures (No. A 116) . . . . .	.60
Ditto, 6 exposures . . . . .	.30
Kodak Portrait Attachment (see page 39) . . . . .	.75
Kodak Self Timer (see page 40) . . . . .	1.25

*The prices of cameras and film include the Excise Tax*

## Nos. 3 and 3A Autographic Kodaks

EVEN the novice appreciates, at once, the various camera appointments that give these two cameras a distinction all their own. For example, there is the rising front that permits the lens to be raised when the camera is held vertically thus avoiding uninteresting foreground as well as reducing the liability of distorted lines when taking pictures from awkward points. Obviously



3A MODEL

*If it isn't an Eastman, it isn't a Kodak*

this same device acts as a side swing when the camera is in horizontal position.

Neither of these models is limited to the use of roll film. By the addition of the Combination Back (see page 51) each may be used with glass plates or Kodak Cut Film and with either of these materials both cameras permit ground-glass focusing—a valuable aid to composition and determination of *exact* focus.

A glance at the details below will show you how completely equipped both the Nos. 3 and 3A Autographic Kodaks are.

### Details

Size of pictures: No. 3,  $3\frac{1}{4} \times 4\frac{1}{4}$  inches; No. 3A,  $3\frac{1}{4} \times 5\frac{1}{2}$  inches. Size of Kodak: No. 3,  $1\frac{3}{4} \times 4\frac{1}{2} \times 7\frac{1}{2}$  inches; No. 3A,  $2 \times 4\frac{3}{4} \times 9\frac{1}{2}$  inches. Capacity without reloading: No. 3, 12 exposures; No. 3A, 10 exposures. Weight: No. 3, 30 ounces; No. 3A, 41 ounces. Adjustable focus only, with automatic focusing lock. No. 3A has double focusing scale for films or plates. Rising, falling and sliding fronts. Lenses: Rapid Rectilinear, No. 3,  $5\frac{1}{4}$ -inch focus; No. 3A,  $6\frac{1}{2}$ -inch focus; Kodak Anastigmat, *f.7.7*, No. 3,  $5\frac{1}{4}$ -inch focus; No. 3A,  $6\frac{1}{2}$ -inch focus. Kodak Ball Bearing Shutter with cable and finger release or on the 3A with anastigmat equipment only, Ilex Universal Shutter with cable and finger release. Speeds—Kodak Ball Bearing Shutter;  $\frac{1}{25}$ ,  $\frac{1}{50}$  and  $\frac{1}{100}$  second, and time and “bulb” actions; Ilex Universal, seven, from  $\frac{1}{100}$  to one second, and time and “bulb” actions. Brilliant finder; reversible for vertical or horizontal pictures. Back and bed of aluminum, covered with fine seal grain leather. Metal parts finished in nickel and black enamel. Black bellows. Autographic feature. Two tripod sockets.

### Prices

	No. 3	No. 3A
Autographic Kodak, Rapid Rectilinear Lens, Kodak Ball Bearing Shutter . . . . .	\$19.00	\$22.50
Ditto, with Kodak Anastigmat Lens, <i>f.7.7</i> . . . . .	24.00	27.50
Ditto, with Kodak Anastigmat Lens, <i>f.7.7</i> and Ilex Universal Shutter . . . . .		31.50
Black Sole Leather Case, with strap . . . . .	3.75	4.50
Soft Leather Carrying Bag . . . . .	2.50	3.00
Combination back for plates . . . . .	4.00	4.00
Double Glass Plate Holders, each . . . . .	1.50	1.50
Kodak Cut Film Sheaths, each . . . . .	.10	.15
Kodak Cut Film, package of 12 . . . . .	.67	.93
Autographic Film Cartridges, 12 exposures (No. A 118) for No. 3; 10 exposures (No. A 122) for No. 3A . . . . .	.90	.90
Ditto, 6 exposures . . . . .	.45	.55
Kodak Portrait Attachment (see page 39) . . . . .	.75	.75
Kodak Self Timer (see page 40) . . . . .	1.25	1.25

*The prices of cameras and film include the Excise Tax*

# No. 1 Autographic Kodak, Special

ABOUT as small as your hand is the new No. 1 *Special*, and yet optically as complete, even to photographic refinements, as are larger cameras. Kodak Anastigmat lens,  $f.6.3$ , Kodamatic



Compliments of the Digitized Kodak Catalog Project: 1886 - 1941

*If it isn't an Eastman, it isn't a Kodak*



shutter with seven adjustable speeds from  $\frac{1}{200}$  of a second to  $\frac{1}{2}$  second, rising front, counter-sunk autographic attachment so that the hand may rest flat while the record is written, aluminum body smart in design and handsomely finished in leather and nickel—even these few details tell the story.

To the man who knows, however, it is the lens and shutter equipment that scores the deepest impression. Both the Kodak Anastigmat, *f.6.3* and the Kodamatic shutter are Eastman-made throughout as equipment on the No. 1 *Special*. The result is complete mechanical and optical harmony—and better pictures.

The negatives are small but the quality is such that large prints from small negatives may always be had, thus combining the utmost in convenience with the utmost in results.

### Details

Size of pictures:  $2\frac{1}{4} \times 3\frac{1}{4}$  inches. Size of Kodak:  $1\frac{5}{16} \times 3\frac{1}{16} \times 6\frac{7}{16}$  inches. Capacity without reloading: 6 exposures. Weight: 18 ounces. Adjustable focus only, with screw focusing device. Lenses: For details see price list below. Shutter: Kodamatic with cable release. Speeds: seven, from  $\frac{1}{200}$  to  $\frac{1}{2}$  second, with time and “bulb” actions. Brilliant finder; reversible for vertical or horizontal pictures. Aluminum body covered with finest quality genuine sealskin. Metal parts finished in nickel and black enamel. Black leather bellows. Autographic feature. Two tripod sockets.

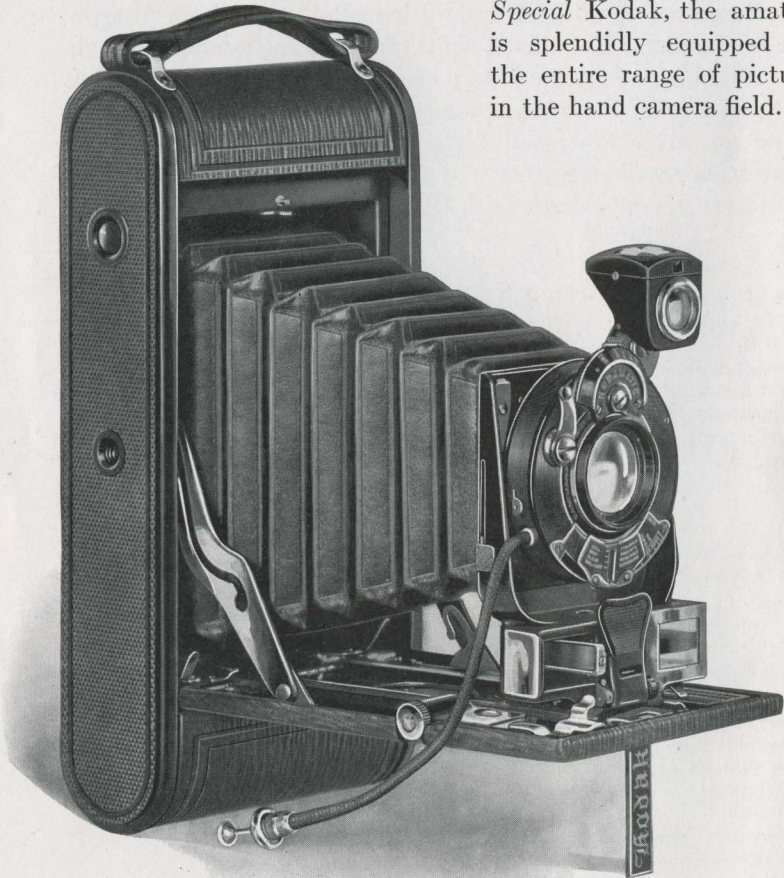
### Prices

No. 1 Autographic Kodak, <i>Special</i> , with Kodak Anastigmat, <i>f.6.3</i> Lens, $4\frac{1}{2}$ -inch focus, and Kodamatic Shutter . . . . .	\$50.00
No. 1 Autographic Kodak, <i>Special</i> , with Bausch & Lomb Kodak Anastigmat, <i>f.6.3</i> Lens No. 1, $4\frac{1}{2}$ -inch focus, and Kodamatic Shutter . . . . .	62.00
No. 1 Autographic Kodak, <i>Special</i> , with Bausch & Lomb Tessar Series IIb, <i>f.6.3</i> Lens No. 3, $4\frac{1}{2}$ -inch focus, and Kodamatic Shutter . . . . .	74.00
No. 1 Autographic Kodak, <i>Special</i> , with Bausch & Lomb Tessar Series Ic, <i>f.4.5</i> Lens No. 12, $3\frac{1}{2}$ -inch focus, and Kodamatic Shutter . . . . .	71.00
Long-grain Leather, Velvet-lined Case, with strap . . . . .	4.00
Autographic Film Cartridge, 6 exposures (No. A 120) . . . . .	.25
Kodak Portrait Attachment (see page 39) . . . . .	.75
Kodak Self Timer (see page 40) . . . . .	1.25

*The prices of cameras and film include the Excise Tax*

## No. 1A Autographic Kodak, Special

**B**RIEFLY, a *Special* Kodak is just as good a hand camera as it is possible to make. It costs a little more to manufacture—a little more to buy and gives in return a decided increase in photographic efficiency. With a *Special* Kodak, the amateur is splendidly equipped for the entire range of pictures in the hand camera field.



*If it isn't an Eastman, it isn't a Kodak*

The 1A *Special* is an excellent example of the refinement of finish and attention to detail that characterize these cameras.

It is fitted with rising front, and in addition to the usual focusing scale is equipped with the Kodak Range Finder which offers a distinct advantage in accurate focusing, especially with high speed lenses such as those with which this camera is equipped.

As furnished in the regular equipment, it is fitted with the Kodak Anastigmat, *f.6.3* lens of 5-inch focus and Kodamatic shutter—both Eastman-made so as to be in perfect harmony not only with each other but with the instrument itself.

The No. 1A *Special* is also furnished with either the Optimo or the Ilex Acme Shutter and with the Bausch & Lomb Kodak Anastigmat or the Bausch & Lomb Tessar lens.

### Details

Size of pictures:  $2\frac{1}{2} \times 4\frac{1}{4}$  inches. Size of Kodak:  $1\frac{5}{8} \times 3\frac{3}{4} \times 8$  inches. Capacity without reloading: 12 exposures. Weight: 34 ounces. Adjustable focus, with Kodak Range Finder and rack and pinion for focusing; also regular focusing scale. Lenses: For details, see price heading below. Kodamatic, Ilex Acme or Optimo Shutter with cable and finger release. Speeds: Kodamatic—Seven, from  $\frac{1}{200}$  to  $\frac{1}{2}$  second; Ilex Acme and Optimo—Eight, from  $\frac{1}{300}$  to 1 second; all with time and "bulb" actions. Brilliant finder; reversible for vertical or horizontal pictures. Aluminum body covered with finest long-grain calf. Metal parts finished in nickel and black enamel. Black leather bellows. Autographic feature.

### Prices

No. 1A Autographic Kodak, <i>Special</i> , with Kodak Anastigmat, <i>f.6.3</i> Lens, 5-inch focus, and Kodamatic Shutter . . . . .	\$60.00
Ditto, with Ilex Acme or Optimo Shutter . . . . .	50.00
No. 1A Autographic Kodak, <i>Special</i> , with Bausch & Lomb Kodak Anastigmat, <i>f.6.3</i> Lens No. 2, $5\frac{1}{4}$ -inch focus, and Kodamatic Shutter . . . . .	73.00
Ditto, with Ilex Acme or Optimo Shutter . . . . .	63.00
No. 1A Autographic Kodak, <i>Special</i> , with Bausch & Lomb Tessar Series IIb, <i>f.6.3</i> Lens No. 4, $5\frac{1}{4}$ -inch focus, and Kodamatic Shutter . . . . .	81.00
Ditto, with Ilex Acme or Optimo Shutter . . . . .	71.00
Grain Leather, Velvet-lined Case, with strap . . . . .	4.75
Soft Leather Carrying Bag . . . . .	2.25
Autographic Film Cartridge, 12 exposures (No. A 116) . . . . .	.60
Ditto, 6 exposures . . . . .	.30
Kodak Portrait Attachment (see page 39) . . . . .	.75
Kodak Self Timer (see page 40) . . . . .	1.25

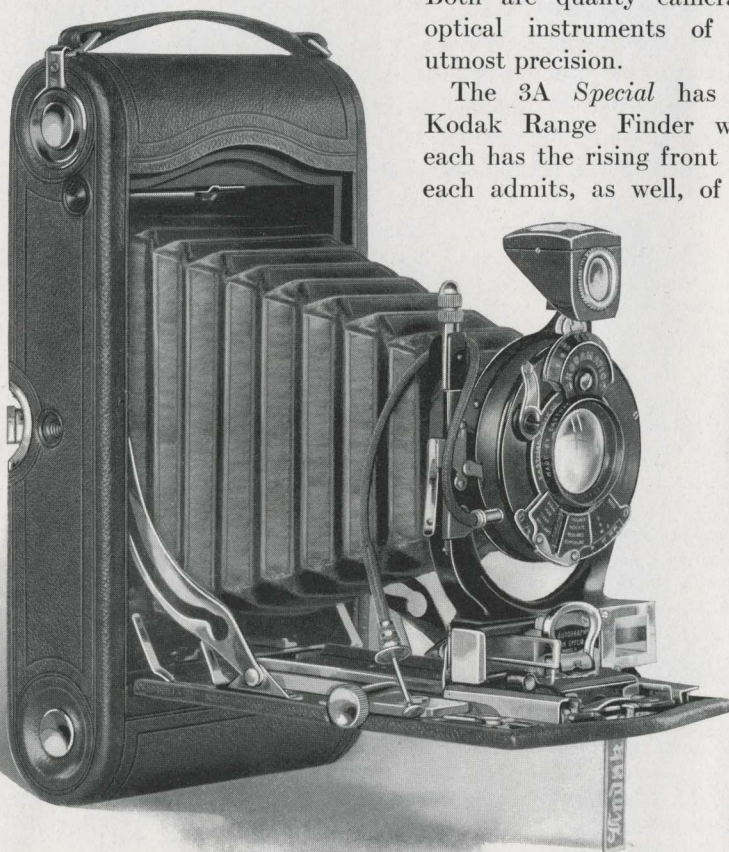
*The prices of cameras and film include the Excise Tax*

## Nos. 3 and 3A Autographic Kodaks, Special

ANY *Special* is just as good a hand camera in that particular size as it is possible to make.

That's true of the No. 3 *Special* Kodak. It's true of the 3A. Both are quality cameras—optical instruments of the utmost precision.

The 3A *Special* has the Kodak Range Finder while each has the rising front and each admits, as well, of the



3A MODEL

*If it isn't an Eastman, it isn't a Kodak*

addition of the Combination Back (page 51) for use with plates or Kodak Cut Film. Either plate or cut film permits ground-glass focusing.

The regular equipment includes the Kodak Anastigmat lens, *f*.6.3 and Kodamatic shutter.

### Details

Pictures: No. 3,  $3\frac{1}{4} \times 4\frac{1}{4}$  inches; No. 3A,  $3\frac{1}{4} \times 5\frac{1}{2}$  inches. Size of Kodak: No. 3,  $1\frac{7}{8} \times 4\frac{1}{2} \times 8$  inches; No. 3A,  $2 \times 4\frac{3}{4} \times 9\frac{1}{2}$  inches. Capacity without re-loading: No. 3, 12 exposures; No. 3A, 10 exposures. Weight: No. 3, 32 ounces; No. 3A, 42 ounces. Adjustable focus, with rack and pinion for focusing, also regular focusing scale; No. 3 also equipped with spirit level; No. 3A, with Kodak Range Finder. Rising and falling front. Lenses: For details, see price heading below. Kodamatic, Ilex Acme or Optimo Shutter with cable and finger release. Speeds: Kodamatic—Seven speeds, No. 3 from  $\frac{1}{200}$  to  $\frac{1}{2}$  second; No. 3A,  $\frac{1}{150}$  to  $\frac{1}{2}$  second. Brilliant finder. Aluminum body covered with genuine Persian Morocco. Metal parts finished in nickel and black enamel. Black leather bellows. Autographic feature. Two tripod sockets.

### Prices

Autographic Kodak, <i>Special</i> , with Kodak Anastigmat, <i>f</i> .6.3 Lens, 5-inch focus on No. 3; $6\frac{3}{4}$ -inch focus on No. 3A; and Kodamatic Shutter . . . . .	No. 3 \$55.00	No. 3A \$70.00
Ditto, with Ilex Acme or Optimo Shutter . . . . .	45.00	60.00
Autographic Kodak, <i>Special</i> , with Bausch & Lomb Kodak Anastigmat, <i>f</i> .6.3 Lens No. 2— $5\frac{1}{4}$ -inch focus on No. 3; Lens No. 4— $6\frac{3}{4}$ -inch focus on No. 3A; and Kodamatic Shutter . . . . .	70.00	90.00
Ditto, with Ilex Acme or Optimo Shutter . . . . .	60.00	80.00
Autographic Kodak, <i>Special</i> , with Bausch & Lomb Tessar Series IIb Anastigmat, <i>f</i> .6.3 Lens No. 4— $5\frac{1}{4}$ -inch focus on No. 3; Lens No. 5K— $7\frac{1}{4}$ -inch focus on No. 3A; and Kodamatic Shutter . . . . .	80.00	100.00
Ditto, with Ilex Acme or Optimo Shutter . . . . .	70.00	90.00
Grain Leather, Velvet-lined Case, with strap. . . . .	4.75	5.50
Soft Leather Carrying Bag . . . . .	2.50	3.00
Combination Back . . . . .	4.50	5.00
Double Glass Plate Holders, each . . . . .	1.50	1.50
Kodak Cut Film Sheaths, each . . . . .	.10	.15
Kodak Cut Film, package of 12 . . . . .	.67	.93
Autographic Film Cartridge 12 exposures (No. A 118) for No. 3; 10 exposures (No. A 122) for No. 3A . . . . .	.90	.90
Ditto, 6 exposures . . . . .	.45	.55
Kodak Portrait Attachment (see page 39) . . . . .	.75	.75
Kodak Self Timer (see page 40) . . . . .	1.25	1.25

*The prices of cameras and film include the Excise Tax*

# The Panoram Kodaks

A LARGE group, a broad sweep of landscape, with a single exposure—the Panoram Kodak is a specialized camera and gives you pictures that are distinctly different. The lens swings in an arc and includes in a long, narrow print almost as much as the eye could see.

The Panoram Kodak is an ideal camera for the motor trip. It enables you to bring those “magnificent views” home.

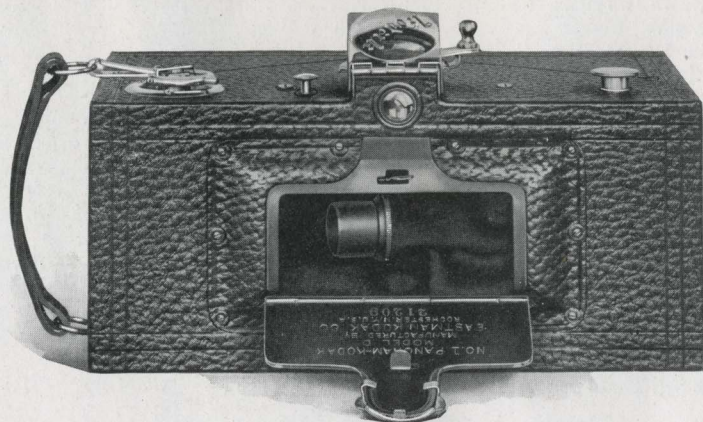
## Details

For rectangular pictures, No. 1,  $2\frac{1}{4} \times 7$  inches; No. 4,  $3\frac{1}{2} \times 12$  inches. Capacity without reloading: No. 1, 6 exposures; No. 4, 4 exposures. Size of Kodak: No. 1,  $3\frac{3}{8} \times 4\frac{3}{8} \times 7\frac{3}{8}$  inches; No. 4,  $4\frac{3}{4} \times 5\frac{5}{8} \times 10\frac{1}{8}$  inches. Weight: No. 1, 28 ounces; No. 4, 45 ounces. Lenses, specially selected as to quality and focal length. Shutter Panoram, with finger release only. Two tripod sockets. Brilliant finder with hood. The lens of No. 1 swings in an arc of 112 degrees; of No. 4, 142 degrees.

## Prices

	No. 1	No. 4
Panoram Kodak . . . . .	\$20.00	\$30.00
Black Sole Leather Carrying Case, with shoulder strap . . . . .	6.50	9.00
N. C. Film Cartridge, No. 1, 6 exposures, $2\frac{1}{4} \times 7$ inches (No. 105); No. 4, 4 exposures, $3\frac{1}{2} \times 12$ inches (No. 103) . . . . .	.50	.90
Ditto, No. 1, 3 exposures (No. 105) . . . . .	.25	

*The prices of cameras and film include the Excise Tax*



# The Stereo Kodak

THERE is a *realness* about stereo prints that no other type of still picture can rival. To glance through the stereoscope and view the scene with its true perspective restored—as the eye saw it—is a pleasure that never dims.

The Kodak, itself, is beautifully built with its two Kodak Anastigmat lenses perfectly matched and the shutter accurate and reliable. The self-transposing printing frame simplifies printing.

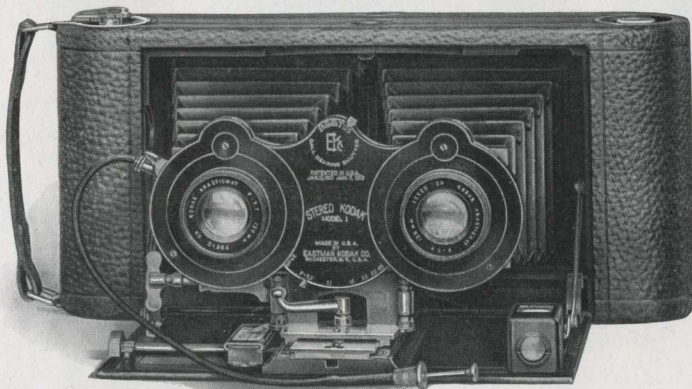
## Details

Size of pictures: Two, each  $3\frac{1}{8} \times 3\frac{3}{8}$  inches. Size of Kodak:  $2\frac{3}{16} \times 4\frac{3}{4} \times 10\frac{1}{2}$  inches. Capacity without reloading: 6 exposures. Weight: 48 ounces. Rising front. Adjustable focus only, with rack and pinion. Lenses: Kodak Anastigmat, *f*.7.7,  $5\frac{1}{4}$ -inch focus. Stereo No. 2 B. B. Shutter with cable and finger release. Speeds:  $\frac{1}{25}$ ,  $\frac{1}{50}$  and  $\frac{1}{100}$  second, and time and "bulb" actions. View finder. Aluminum body covered with seal grain leather. Metal parts finished in nickel and black enamel. Black bellows. One tripod socket.

## Prices

Stereo Kodak, Model No. 1, Kodak Anastigmat Lenses, <i>f</i> .7.7, and Stereo Ball Bearing Shutter . . . . .	\$50.00
Black Sole Leather Carrying Case, with strap . . . . .	6.00
N. C. Film Cartridge (No. 101), 6 exposures, for Stereo . . . . .	.70
Ditto, 3 exposures for Stereo . . . . .	.35
Stereo Kodak Self-transposing Printing Frame . . . . .	4.50

*The prices of cameras and film include the Excise Tax*



## Nos. 0 and 2 Brownies

As far as operation goes, there is no simpler camera made than the box Brownie. This makes it an excellent playground pal for the youngster, although it is in no sense a camera for children exclusively. For anyone who wants pictures—good pictures—the easiest way at the smallest cost—the logical camera is a Brownie.



No. 2 MODEL

### Details

Size of pictures: No. 0,  $1\frac{5}{8} \times 2\frac{1}{2}$  inches; No. 2,  $2\frac{1}{4} \times 3\frac{1}{4}$  inches. Size of camera: No. 0,  $2\frac{5}{8} \times 3\frac{3}{8} \times 4\frac{1}{8}$  inches; No. 2,  $3\frac{1}{4} \times 4 \times 5\frac{5}{8}$  inches. Capacity: No. 0, 8 exposures; No. 2, 6 exposures. Weight: No. 0, 8 ounces; No. 2,  $15\frac{1}{2}$  ounces. Fixed focus. Lens: Meniscus. Eastman Rotary Shutter: No. 0, one stop, also time action; No. 2, three stops and time action. Two ground-glass finders for vertical and horizontal pictures. Body covered with imitation leather.

### Prices

	No. 0	No. 2
Brownie Camera, Meniscus Lens, Eastman Rotary Shutter . . . . .	\$2.00	\$2.50
Brownie Carrying Case for No. 0 . . . . .	1.00	
Brownie Carrying Case, with strap, for No. 2 . . . . .		1.25
N. C. Film Cartridge, 8 exposures (No. 127), for No. 0 . . . . .	.25	
Ditto, 6 exposures (No. 120), for No. 2 . . . . .		.25
Brownie Tripod Adapter (see page 59) . . . . .	.25	.25
Kodak Portrait Attachment (see page 39) . . . . .	.75	.75
Developing and Printing Outfit (see page 43) . . . . .	1.00	1.65

*The prices of cameras and film include the Excise Tax*



## No. 2A Brownie

LIKE the other box Brownies, the photographic experience is inside the box, with the result that about all the user has to do is to point the lens and press the release. The subject is always in focus.

The picture size and proportions of the 2A Brownie— $2\frac{1}{2} \times 4\frac{1}{4}$  inches—lend themselves admirably to either portraiture or groups and landscapes.

### Details

Size of pictures:  $2\frac{1}{2} \times 4\frac{1}{4}$  inches.  
 Size of camera:  $3\frac{7}{16}$   
 $\times 5\frac{1}{8} \times 6\frac{1}{8}$  inches.  
 Capacity without reloading: 12 exposures. Weight:  $19\frac{1}{2}$  ounces. Fixed focus only. Lens: Meniscus Achromatic. Eastman Rotary Shutter, with three stops and time action. Two ground-glass finders for vertical and horizontal pictures. Body covered with imitation leather. Metal parts finished in nickel and black enamel.



### Prices

No. 2A Brownie Camera, Meniscus Achromatic Lens, Eastman Rotary Shutter . . . . .	\$3. 50
Brownie Carrying Case, with strap . . . . .	1. 50
N. C. Film Cartridge, 12 exposures (No. 116) . . . . .	. 60
Ditto, 6 exposures . . . . .	. 30
Kodak Portrait Attachment (see page 39) . . . . .	. 75
Brownie Tripod Adapter (see page 59) . . . . .	. 25
Developing and Printing Outfit (see page 43) . . . . .	1. 65

*The prices of cameras and film include the Excise Tax*

## Nos. 3 and 2C Brownies

Simple and inexpensive as these Brownies are, they nevertheless make good pictures of a satisfying size. They are sturdily built, well finished, and equipped as they are with carefully tested lens and Eastman Rotary Shutter, provide child or adult with the easiest possible means to good pictures.



No. 3 MODEL

### Details

Size of pictures: No. 3,  $3\frac{1}{4} \times 4\frac{1}{4}$  inches; No. 2C,  $2\frac{7}{8} \times 4\frac{7}{8}$  inches. Size of camera: No. 3,  $4\frac{3}{8} \times 5\frac{1}{8} \times 6\frac{1}{8}$  inches; No. 2C,  $3\frac{7}{8} \times 6\frac{1}{4} \times 7\frac{1}{4}$  inches. Capacity without reloading: No. 3, 12 exposures; No. 2C, 10 exposures. Weight: No. 3, 25 ounces; No. 2C, 28 ounces. Fixed focus only. Lens: Meniscus Achromatic. Eastman Rotary Shutter, with three stops and time action. Two ground-glass finders for vertical and horizontal pictures. Wood body with imitation leather. Two tripod sockets.

### Prices

	No. 3	No. 2C
Brownie Camera with Meniscus Achromatic Lens and Eastman Rotary Shutter . . . . .	\$4.50	\$5.00
Brownie Carrying Case, with strap . . . . .	1.60	1.60
N. C. Film Cartridge, 10 exposures (No. 130), for No. 2C . . . . .		.75
Ditto, 6 exposures . . . . .		.45
Ditto, 12 exposures (No. 124), for No. 3 . . . . .	.90	
Ditto, 6 exposures . . . . .	.45	
Kodak Portrait Attachment (see page 39) . . . . .	.75	.75
Developing and Printing Outfit (see page 43) . . . . .	1.65	1.65

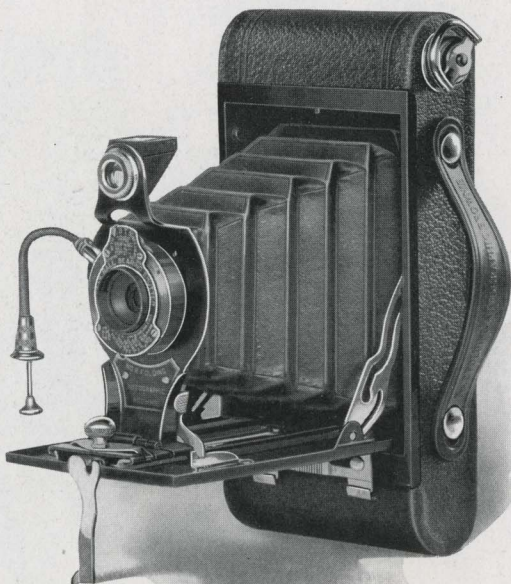
*The prices of cameras and film include the Excise Tax*

# No. 2 Folding Autographic Brownie

**M**ADE in Kodak factories by Kodak workmen, naturally enough the Folding Brownies reflect certain important Kodak characteristics, even to the autographic feature. The No. 2 is a small, compact camera offering dependable lens and shutter equipment and the simplicity of operation that only a Brownie can have.

## Details

Size of pictures:  $2\frac{1}{4} \times 3\frac{1}{4}$  inches. Size of camera:  $1\frac{1}{4} \times 3\frac{1}{8} \times 6\frac{1}{2}$  inches. Capacity without reloading: 6 exposures. Weight: 19 ounces. Adjustable focus with automatic focusing lock. Lenses: Meniscus Achromatic; or Rapid Rectilinear,  $3\frac{3}{4}$ -inch focus. Kodak Ball Bearing Shutter, with Autotime Scale and cable and finger release. Speeds:  $\frac{1}{25}$  and  $\frac{1}{50}$  second, with time and "bulb" actions. Ground-glass finders; reversible for vertical and horizontal pictures. Metal body covered with durable imitation leather. Metal parts finished in nickel and black enamel. Black bellows. Autographic feature. Two tripod sockets.



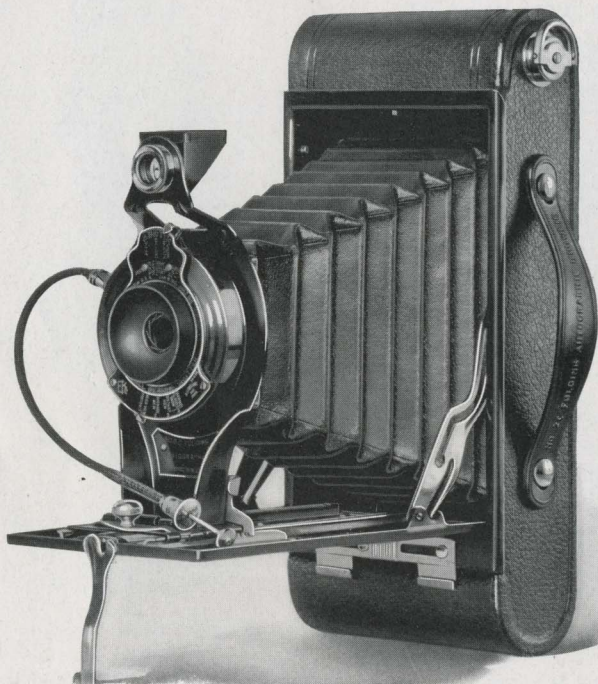
## Prices

No. 2 Folding Autographic Brownie, Meniscus Achromatic Lens and Kodak Ball Bearing Shutter . . . . .	\$ 9.00
Ditto, with Rapid Rectilinear Lens . . . . .	11.00
Carrying Case for No. 2 Folding Autographic Brownie, with strap . . . . .	1.50
Autographic Film Cartridge, 6 exposures (No. A 120) . . . . .	.25
Kodak Portrait Attachment (see page 39) . . . . .	.75
Kodak Self Timer (see page 40) . . . . .	1.25

*The prices of cameras and film include the Excise Tax*

## Nos. 2A and 2C Folding Autographic Brownies

HERE are cameras that make an instant appeal to one's common sense. There is nothing pretentious about them—no flourishes of any kind—just practical, dependable cameras for general amateur work.



2C MODEL

*Eastman-designed and Eastman-made*

Despite their simplicity, however, and their common sense characteristics, it must not be forgotten that Eastman-designed and Eastman-made as they are, these Folding Brownies are efficient photographic instruments and are built to conform to the rigid Eastman standard.

The Nos. 2A and 2C Folding Brownies differ chiefly in the size of pictures taken. The No. 2A makes  $2\frac{1}{2} \times 4\frac{1}{4}$  inch, while the No. 2C makes  $2\frac{7}{8} \times 4\frac{7}{8}$  inch pictures.

Both have the Kodak Ball Bearing Shutter with speeds up to  $\frac{1}{100}$  of a second.

Both are made of metal, attractively covered with fine imitation leather and are in every sense satisfactory picture-makers.

### Details

Size of pictures: No. 2A,  $2\frac{1}{2} \times 4\frac{1}{4}$  inches; No. 2C,  $2\frac{7}{8} \times 4\frac{7}{8}$  inches. Size of camera: No. 2A,  $1\frac{7}{16} \times 3\frac{3}{8} \times 7\frac{7}{8}$  inches; No. 2C,  $1\frac{3}{4} \times 3\frac{3}{4} \times 8\frac{1}{8}$  inches. Capacity without reloading: No. 2A, 12 exposures; No. 2C, 10 exposures. Weight: No. 2A,  $25\frac{1}{2}$  ounces; No. 2C, 27 ounces. Adjustable focus, with automatic focusing lock. Lenses: Meniscus Achromatic; or Rapid Rectilinear—No. 2A, 5-inch focus; No. 2C,  $5\frac{1}{2}$ -inch focus. Kodak Ball Bearing Shutter with Auto-time Scale and cable and finger release. Speeds:  $\frac{1}{25}$ ,  $\frac{1}{50}$  and  $\frac{1}{100}$  second, with time and "bulb" actions. Ground-glass finders; reversible for vertical and horizontal pictures. Metal body covered with durable imitation leather. Metal parts finished in nickel and black enamel. Black bellows. Autographic feature. Two tripod sockets.

### Prices

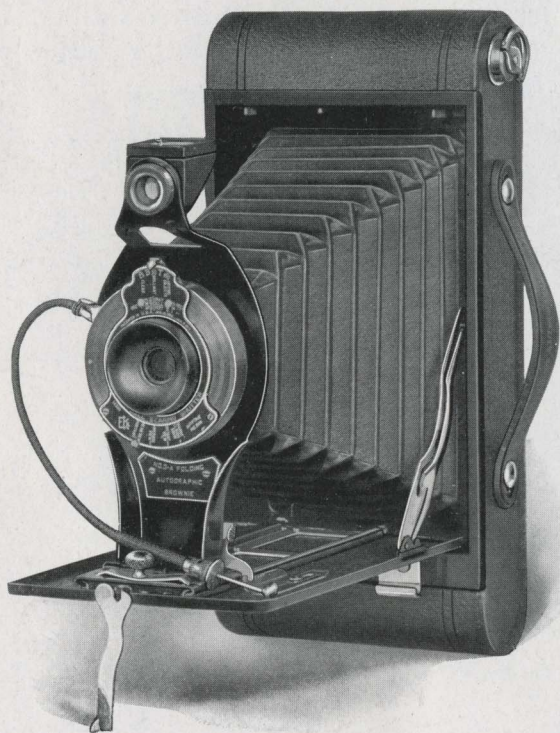
	No. 2A	No. 2C
Folding Autographic Brownies with Meniscus Achromatic Lenses and Kodak Ball Bearing Shutters . . . . .	\$10.00	\$13.00
Ditto, with Rapid Rectilinear Lenses . . . . .	12.00	15.00
Carrying Case for Folding Autographic Brownies, with strap . . . . .	1.60	1.70
Autographic Film Cartridges, 12 exposures, (No. A 116); 10 exposures, (No. A 130) . . . . .	.60	.75
Ditto, 6 exposures . . . . .	.30	.45
Kodak Portrait Attachment (see page 39) . . . . .	.75	.75
Kodak Self Timer (see page 40) . . . . .	1.25	1.25

*The prices of cameras and film include the Excise Tax*

## No. 3A Folding Autographic Brownie

**S**UBSTANTIALLY constructed, carefully built and amply equipped, the 3A Folding Brownie makes good pictures in a good size,  $3\frac{1}{4} \times 5\frac{1}{2}$  inches.

The carefully tested lens and Kodak Ball Bearing Shutter have snap-shot speeds of  $\frac{1}{25}$ ,  $\frac{1}{50}$  and  $\frac{1}{100}$  of a second, as well as time and



*Eastman-designed and Eastman-made*

“bulb” actions, while the presence of the autographic feature is proof positive that the camera is Eastman-made, Eastman-designed.

To those who want a large size picture and yet wish to keep the cost down, the 3A Folding Brownie immediately qualifies as just the thing. The complete camera with every photographic essential as an integral part of the equipment costs only \$14.50 when fitted with single lens and \$17.00 when fitted with Rapid Rectilinear.

This makes it easily possible to add such conveniences as the Kodak Portrait Attachment for Kodak Portraiture, and the Kodak Self-Timer that keeps the group complete and makes self-portraits possible—camera equipment *plus*, in other words—and still make the price surprisingly moderate. From the point of view of the purchaser, the 3A Folding Autographic Brownie recommends itself at once as a “good buy.”

### Details

Size of pictures:  $3\frac{1}{4} \times 5\frac{1}{2}$  inches. Size of camera:  $1\frac{11}{16} \times 4\frac{5}{16} \times 9\frac{5}{16}$  inches. Capacity without reloading: 10 exposures. Weight: 32 ounces. Adjustable focus, with automatic focusing lock. Lenses: Meniscus Achromatic; Rapid Rectilinear,  $6\frac{1}{4}$ -inch focus. Kodak Ball Bearing Shutter with Autotime Scale, and cable and finger release. Speeds:  $\frac{1}{25}$ ,  $\frac{1}{50}$  and  $\frac{1}{100}$  second, and time and “bulb” actions. Ground-glass finders; reversible for vertical and horizontal pictures. Metal body covered with durable imitation leather. Metal parts finished in nickel and black enamel. Black bellows. Autographic feature. Two tripod sockets.

### Prices

No. 3A Folding Autographic Brownie, Meniscus Achromatic Lens and Kodak Ball Bearing Shutter . . . . .	\$14.50
Ditto, with Rapid Rectilinear Lens . . . . .	17.00
Carrying Case for No. 3A Folding Autographic Brownie, with strap . . . . .	1.80
Autographic Film Cartridge, 10 exposures (No. A 122) . . . . .	.90
Ditto, 6 exposures . . . . .	.55
Kodak Portrait Attachment (see page 39) . . . . .	.75
Kodak Self Timer (see page 40) . . . . .	1.25

*The prices of cameras and film include the Excise Tax*

## Kodak Ball Bearing Shutter

A THOROUGHLY reliable shutter whose operation is smooth and even, due to ball bearing construction, and whose speeds meet every requirement of the lenses with which it is listed.



There are three models, differing in size and speed. All have, in addition to the snapshot speeds, both "bulb" and time actions.

Shutter No. 0, with speeds of  $\frac{1}{25}$  and  $\frac{1}{50}$  of a second, is fitted to the Vest Pocket Kodaks, Regular and *Special*, fixed focus and focusing models; No. 2 Folding Brownie; and No. 1 Kodak Junior, with single or R. R. lens.

Shutter No. 1, with speeds of  $\frac{1}{25}$ ,  $\frac{1}{50}$  and  $\frac{1}{100}$  of a second, is fitted to the No. 1 Pocket Kodak, Series II; the No. 1 Kodak Junior, with *f.7.7* lens; the No. 1A Kodak Junior; No. 1A Kodak; No. 3 Kodak; and No. 2A Folding Brownie.

Shutter No. 2, with speeds of  $\frac{1}{25}$ ,  $\frac{1}{50}$  and  $\frac{1}{100}$  of a second is fitted to No. 2C Kodak Jr.; No. 3A Kodak Jr.; No. 3A Kodak and Nos. 2C and 3A Folding Brownie.

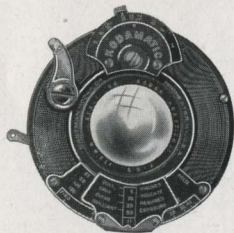
## The Kodamatic Shutter

A FULL-JEWELED watch is accurate to the second. The Kodamatic shutter is accurate to the  $\frac{1}{200}$  of a second. Photographic experts know it as a masterpiece of mechanical construction—a shutter that is scientifically *exact*.

The Kodamatic shutter has seven speeds,  $\frac{1}{200}$ , ( $\frac{1}{150}$  on 3A),  $\frac{1}{100}$ ,  $\frac{1}{50}$ ,  $\frac{1}{25}$ ,  $\frac{1}{10}$ ,  $\frac{1}{5}$  and  $\frac{1}{2}$ , as well as time and "bulb" action and with these speeds at his disposal, the amateur is equipped for virtually any picture in the hand camera field.

A feature of the utmost value in getting correct exposures is a sliding scale, attached to the "stop" indicator plate, which shows which speed to use for each stop opening under four different lighting conditions—dull, gray, clear or brilliant.

The Kodamatic is furnished only with the *Special* Kodaks.





# The KODAK ANASTIGMATS

*f.7.7 f.6.3 and f.4.5*

STARTING from the rough glass, the Kodak Anastigmat is Eastman made. The organization that makes the camera also makes the lens. Obviously, then, the lens expert does not have the generality "camera" in mind but rather a specific model of known capabilities in a specific size and with a specific shutter. The camera builder and the lens maker are aiming—not at a common target—but at a common bull's eye.

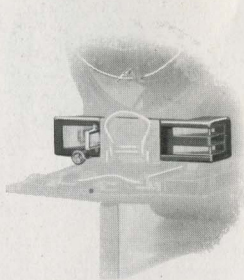
As a result, on the camera to which it is fitted, any Kodak Anastigmat at its indicated speed is *at least* the equal in depth, sharpness and flatness of field of any anastigmat made, regardless of price.

## The Kodak Range Finder

THE Kodak Range Finder finds the focus for you with scientific precision.

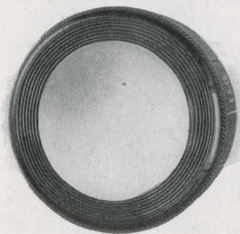
Open the Kodak, drawing out the standard to the limit of motion, and holding the Kodak in the horizontal position, look *through* the Range Finder at the three mirrors. Select some horizontal line near the center of the subject, and rack the lens back and forth until this line is continuous in the three mirrors. *When the line is continuous, the focus is correct.* It is all very simple and certain.

The Kodak Range Finder is fitted to the 1A and 3A *Specials* only.



## Kodak Portrait Attachment

JUST as the close-ups on the screen are often the most effective scenes in the photoplay, so the close-ups, made possible through the Kodak Portrait Attachment, frequently become the prize prints of the album.



And it's all very simple. The attachment is merely an extra lens that slips on over the regular lens equipment and, without altering the exposure or changing the operation of the Kodak in any way, brings the subject in sharp focus at close range.

While Kodak portraits, such as you find as the frontispiece to this book, offer obvious possibilities, the Kodak Portrait Attachment may be used as well for photographing flowers or similar subjects.

## Kodak Sky Filters

KODAK Sky Filters are glass attachments mounted in the same manner as the Kodak Portrait Attachments.

The Sky Filter is intended to equalize the great difference of light between the sky and foreground in landscape photography. Only the upper half of the filter is stained a yellow color to relieve the brightness from the sky, while the lower half of the filter being colorless, permits a normal exposure for the foreground.

## Kodak Color Filters

KODAK Color Filters are of great value in outdoor photography, and for all subjects embracing colors which act weakly on the sensitive film, as they hold back the strong blue and violet rays, affording the weaker colors time to record. The dye used in Kodak Color Filters is one of the discoveries of the Eastman Research Laboratory.



# Kodak Portrait Attachments, Kodak Sky Filters and Kodak Color Filters

## Prices

Order by this Number	For Vest Pocket Autographic Kodaks	Portrait Attach- ments	Sky and Color Filters
No. 1.	For Regular Vest Pocket Kodak, with single lens . . . . .	\$0.75	\$0.75
No. 8.	For Regular Vest Pocket Kodak, with Rapid Rectilinear Lens . . . . .	.75	.75
No. 8.	For Special Vest Pocket Kodak, fixed focus model, with Anastigmat Lens . . . . .	.75	.75
No. 8A.	For Special Vest Pocket Kodak, focusing model . . . . .		.75

## For Autographic Kodaks, Junior

No. 8.	For No. 1 Autographic Kodak Junior, with single or double lens . . . . .	.75	.75
No. 3.	For No. 1 Autographic Kodak Junior, with Kodak Anastigmat, <i>f.7.7</i> Lens . . . . .	.75	1.15
No. 3.	For No. 1A Autographic Kodak Junior, with single lens, double lens or Kodak Anastigmat, <i>f.7.7</i> Lens (without engraving on front of lens barrel) . . . . .	.75	1.15
No. 13.	For No. 1A Autographic Kodak Junior, with Kodak Anastigmat, <i>f.7.7</i> Lens (with engraving on front of lens barrel) . . . . .	.75	1.15
No. 5.	For No. 2C Autographic Kodak Junior, with single or double lens . . . . .	.75	1.50
No. 7.	For No. 2C Autographic Kodak Junior, with Kodak Anastigmat, <i>f.7.7</i> Lens . . . . .	.75	1.50
No. 5.	For No. 3A Autographic Kodak Junior, with single or double lens . . . . .	.75	1.50
No. 7.	For No. 3A Autographic Kodak Junior, with Kodak Anastigmat, <i>f.7.7</i> Lens . . . . .	.75	1.50

## For Autographic Kodaks

No. 8.	For No. 1 Pocket Kodak, Series II . . . . .	.75	.75
No. 3.	For No. 1A Autographic Kodak, with double lens . . . . .	.75	1.15
No. 13.	For No. 1A Autographic Kodak, with Kodak Anastigmat, <i>f.7.7</i> Lens . . . . .	.75	1.15
No. 3.	For No. 3 Autographic Kodak, with double lens . . . . .	.75	1.15
No. 13.	For No. 3 Autographic Kodak, with Kodak Anastigmat, <i>f.7.7</i> Lens . . . . .	.75	1.15
No. 9.	For No. 3 Autographic Kodak, with Kodak Automatic Shutter . . . . .	.75	.75
No. 5.	For No. 3A Autographic Kodak, with double lens . . . . .	.75	1.50
No. 7.	For No. 3A Autographic Kodak, with Kodak Anastigmat, <i>f.7.7</i> Lens . . . . .	.75	1.50

## For Autographic Kodaks, Special

No. 6.	For No. 1 Autographic Kodak, <i>Special</i> , with any listed lens . . . . .	.75	1.15
No. 6.	For No. 1A Autographic Kodak, <i>Special</i> , with any listed lens . . . . .	.75	1.15
No. 6.	For No. 3 Autographic Kodak, <i>Special</i> , with any listed lens . . . . .	.75	1.15
No. 7.	For No. 3A Autographic Kodak, <i>Special</i> , with any listed lens . . . . .	.75	1.50

## For Box Brownies

No. 1.	For No. 0 Box Brownie, with single lens . . . . .	.75	.75
No. 1.	For No. 2 Box Brownie, with single lens . . . . .	.75	.75
No. 2.	For No. 2A Box Brownie, with single lens . . . . .	.75	.75
No. 4.	For No. 2C Box Brownie, with single lens . . . . .	.75	1.15
No. 4.	For No. 3 Box Brownie, with single lens . . . . .	.75	1.15

## For Folding Autographic Brownies

No. 8.	For No. 2 Folding Autographic Brownie, with single or double lens . . . . .	.75	.75
No. 3.	For No. 2A Folding Autographic Brownie, with single or double lens . . . . .	.75	1.15
No. 5.	For No. 2C Folding Autographic Brownie, with single or double lens . . . . .	.75	1.50
No. 5.	For No. 3A Folding Autographic Brownie, with single or double lens . . . . .	.75	1.50



## Kodak Self Timer

ONE of the most popular of the Kodak accessories is the Kodak Self Timer which fits on the cable release of any Kodak or Brownie and automatically presses the button. The device consists of a piston rod actuated by a spring, and the time of operation is controlled by the amateur within the limits of  $\frac{1}{2}$  second and 1 minute. He sets it for the time interval desired and then takes his position in front of the lens until the "click" tells him that the picture is made.

Through the Kodak Self Timer, the group is kept complete and self-portraits are easily possible.

Kodak Self Timer . . . . . \$1.25

## Velox Transparent Water Color Stamps

TO convert a black and white print into a beautifully colored picture is a task simple and interesting with these stamps. No artistic skill is necessary as the colors are self-blending. Velox Transparent Water Color Stamps are equally suitable for lantern slides.

The Velox Transparent Water Color Outfit is a complete coloring set put up in a cardboard case and including book of stamps, three brushes and white enameled mixing palette.

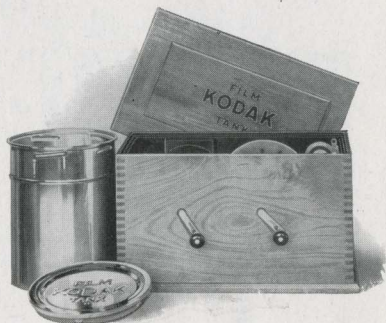


Velox Transparent Water Color Stamps, complete booklet, 12 colors . . .	\$0.45
Separate Color Leaves, per sheet . . . . .	.04
Set of three Special Brushes, per set . . . . .	.50
Mixing Palette . . . . .	.25
Velox Transparent Water Color Stamp Outfit, including book, three brushes and palette . . . . .	1.00

# Kodak Film Tank

ANYBODY can get as correctly developed negatives by developing films in the Kodak Film Tank as an expert can by any known method of development. All that is necessary is to use the developer recommended and develop for the length of time the tank instructions require for the temperature at which the developer is used.

Duplicating outfits for developing more than one roll at a time are listed below.



## Prices

Brownie Kodak Film Tank, for use with No. 1, No. 2 and No. 2 Folding Brownie Cartridges, complete . . . . .	\$3. 50
Spool Adapter, for Vest Pocket Kodak Film . . . . .	. 10
Vest Pocket Kodak Film Tank, for Vest Pocket Cartridges, complete . . . . .	3. 00
2½-inch Kodak Film Tank, for use with all Kodak or Brownie Cartridges having a film width 2½ inches or less, complete . . . . .	4. 50
3½-inch Kodak Film Tank, for use with all Kodak and Brownie Cartridges having a film width of 3½ inches or less, complete. . . . .	5. 50
5-inch Kodak Film Tank, for use with all Kodak and Brownie Cartridges having a film width of 5 inches or less, complete. . . . .	6. 50
7-inch Kodak Film Tank, for use with No. 5 Cartridge Kodak or narrower film cartridges, complete . . . . .	8. 00
Duplicating Outfit, consisting of one solution cup, one transferring reel and one apron, for Brownie Kodak Film Tank . . . . .	1. 50
Ditto, for Vest Pocket Film Tank . . . . .	1. 50
Ditto, for 2½-inch Kodak Film Tank . . . . .	2. 25
Ditto, for 3½-inch Kodak Film Tank . . . . .	2. 75
Ditto, for 5-inch Kodak Film Tank . . . . .	3. 25
Ditto, for 7-inch Kodak Film Tank . . . . .	4. 00
Flexible Fixing and Washing Tank, for 3½-inch Kodak Film Tank . . . . .	2. 50
Kodak Tank Developer for Brownie Kodak Film Tank, per ½ dozen . . . . .	. 20
Ditto, for Vest Pocket Tank . . . . .	. 20
Ditto, for 2½-inch tank, per package, ½ dozen . . . . .	. 25
Ditto, for 3½-inch tank, per package, ½ dozen . . . . .	. 25
Ditto, for 5-inch tank, per package, ½ dozen . . . . .	. 30
Ditto, for 7-inch tank, per package, ½ dozen . . . . .	. 30
Kodak Acid Fixing Powder, per ¼-pound package . . . . .	. 15
Ditto, per 1-pound package. . . . .	. 35



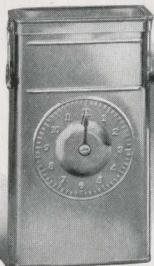
## No. 2 Brownie Developing Box

**T**HIS is a simplified form of the Kodak Film Tank, offering the same assurance of perfectly developed film, and so simple that any boy or girl can readily operate it.

It consists of a metal box with cover, just long enough to accommodate a roll of Nos. 117, A120, 120, A127 or 127 Film Cartridge in one loop. All the operations are performed in daylight.

### Prices

No. 2 Brownie Developing Box . . . . .	\$1.75
Brownie Developing Box Powders, per package of 6 . . . . .	.20
Kodak Acid Fixing Powders, 1/2-pound package . . . . .	.20
Ditto, 1/4-pound package . . . . .	.15



## Eastman Plate Tank

**I**T takes only a few moments in the dark room to load this tank, after which it may be brought out into any light for development. The device consists of a metal solution cup with cover, a cage for holding twelve or less plates, and a loading fixture for loading the plates in the cage. On the front of the tank is a dial for registering time.

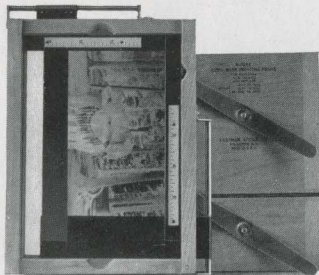
### Prices

Eastman Plate Tank, for 4 x 5, 3 1/4 x 5 1/2-inch and smaller plates, includes solution cup, plate cage, loading fixture and adjustable kit . . . . .	\$3.50
Ditto, 5 x 7-inch, without kit . . . . .	5.50
Adjustable Kit, for 4 x 5 or 3 1/4 x 5 1/2-inch tank, to take smaller plates . . . . .	.60
Separate Kits, for 5 x 7-inch tank, to take 3 1/4 x 5 1/2, 4 1/4 x 6 1/2 or 4 3/4 x 6 1/2-inch plates, each . . . . .	1.00
Metal Insert, for 5 x 7-inch tank, to take 4 x 5-inch plates . . . . .	.25
Eastman Plate Tank Developer Powders, for 4 x 5-inch tank, per package, 1/2 dozen . . . . .	.25
Ditto, for 5 x 7-inch tank, per package, 1/2 dozen . . . . .	.50
Kodak Acid Fixing Powder, per 1-pound package . . . . .	.35
Ditto, per 1/2-pound package . . . . .	.20

## Kodak Auto-Mask Printing Frame

THIS frame is adaptable to the printing of negatives of any amateur size, from 4 x 5, 3¼ x 5½ inches and smaller. Attached to the frame are two slides which can be adjusted readily from the outside, forming a mask of whatever size is desired.

Any number of uniformly masked prints may be made without readjustment. The graduated scales attached to the stationary guides, aid in sizing and holding exact dimensions of mask openings.



Kodak Auto-mask Printing Frame . . . . . \$1.50

## Developing and Printing Outfits

BY combining a variety of articles and making up the outfits in large quantities we are able to offer complete dark-room developing and printing outfits at a much lower price than if the articles were purchased separately. The Eastman 3A Outfit, below, contains every requisite for finishing twenty-four 3¼ x 5½-inch or smaller pictures.

One Kodak Candle Lamp . . . . .	\$0.40
One Printing Frame . . . . .	.40
One Glass for Frame . . . . .	.05
One 4-ounce Graduate . . . . .	.15
One Stirring Rod . . . . .	.06
Four Developing Trays . . . . .	.40
Five Tubes Eastman Special Developer . . . . .	.30
One-half pound Kodak Acid Fixing Powder . . . . .	.20
Two dozen 3¼ x 5½-inch Velox Paper . . . . .	.40
Two ounces Nepera Solution for developing Velox . . . . .	.20
Instruction Book (free)	<hr/>
	\$2.56

**EASTMAN 3A OUTFIT, COMPLETE, NEATLY PACKED, \$1.65**

EASTMAN A B C OUTFIT, similar to above but providing for 4 x 5-inch or smaller pictures . . . . .	\$1.65
No. 0 BROWNIE Developing and Printing Outfit, complete, for developing and printing twenty-four pictures 1⅝ x 2½ inches. Price, complete	1.00

## Kodak Amateur Printer

THROUGH the glass window in the removable top, prints may be made with white margins, any size from  $1\frac{5}{8} \times 2\frac{1}{2}$  to  $4 \times 5\frac{1}{2}$  inches, by a simple automatic masking device, which holds the negatives firmly until released.

Within the box is a small red electric bulb to permit the adjustment of negative and paper, and provision is made for a 60 Watt Mazda Lamp, which is automatically turned on when the hinged frame is closed to make the exposure. To secure even illumination on negatives of various sizes, the position of the lamp is readily adjustable.

In the side of the box a removable, orange fabric window serves as a dark-room lamp.

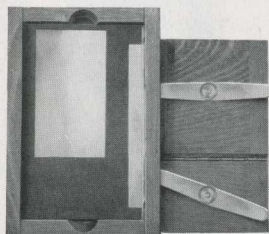
The printer is supplied complete, without lamp, but including  $5\frac{1}{2}$  feet of electric light cord and plug.

The Kodak Amateur Printer . . . . . \$10.00



## Maskit Printing Frame

THE Kodak Maskit Printing Frame is designed to overcome the difficulty of the negative and mask slipping on the glass, and to secure prints with a uniform white margin.



Kodak Maskit,  $3\frac{1}{4} \times 4\frac{1}{4}$ -inch, opens two-thirds . . \$0.65  
 Kodak Maskit,  $3\frac{1}{4} \times 5\frac{1}{2}$ -inch, opens two-thirds . . .70  
 Kodak Maskit,  $5 \times 7$ -inch, opens two-thirds . . . .85

## Kodaloid Printing Masks

THESE transparent, orange-red color masks, intended for use with Maskit Printing Frames are supplied in sets of three each, with different size opening.

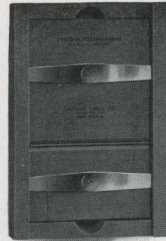
Per set of 3,  $3\frac{1}{4} \times 4\frac{1}{4}$ , \$0.30    Per set of 3,  $3\frac{1}{4} \times 5\frac{1}{2}$ , \$0.30    Per set of 3,  $5 \times 7$ , \$0.45  
 Black paper masks, same sizes as above. Price, per set of 3, \$0.10



## Eastman Printing Frames

CONSIST of a wood frame with a two-section back with clamps to hold the negative and paper firmly.

For 2¼ x 3¼-inch plates and V. P. K. or smaller film negatives, opens two-thirds	\$0.35
For 2½ x 4¼-inch or smaller film negatives, opens two-thirds	.40
For 3¼ x 4¼-inch or smaller film negatives, opens two-thirds	.40
For 3¼ x 5½-inch or smaller film negatives, opens two-thirds	.40
For 3¼ x 5½-inch plates, opens two-thirds	.45
For 4 x 5-inch plates, opens two-thirds	.40
For 5 x 7-inch plates, opens two-thirds	.55
For 3½ x 12-inch No. 4 Panoram Kodak negatives, opens in three sections	1.15
For 2¼ x 7-inch No. 1 Panoram Kodak negatives, opens in two sections	.70



## Brownie Printing Frames

CONSIST of a glass with padded cardboard backing attached by an imitation leather hinge. Simple but efficient.

Brownie Printing Frame, No. 1, for 2¼ x 2¼ Developing paper only.	\$0.25	Brownie Printing Frame, No. 2, for 2¼ x 3¼ Developing paper only	\$0.25
---	--------	--	--------

## Kodak Serial Printing Frame No. 2

FOR printing from Vest Pocket Kodak and No. 0 Brownie negatives. Developed film slides through the frame in a continuous strip, facilitating handling.

Kodak Serial Printing Frame No. 2 for V. P. K. and No. 0 Brownie negatives	\$0.60
--	--------

## Kodaloid Printing Masks

MADE of transparent Kodaloid, to fit the regular Printing Frames, and offering various sizes of openings.

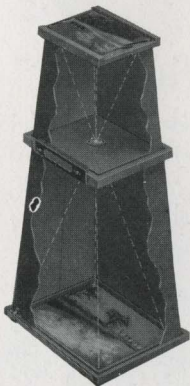
For 3A Frames, 8 masking sizes, each	\$0.10	For 4 x 5 Frames, 7 masking sizes, each	\$0.10	For 5 x 7 Frames, 6 masking sizes, each	\$0.15
--------------------------------------	--------	---	--------	---	--------

## Brownie Enlarging Camera

CONSISTS of a light-tight cone, made in two sections, with an attachment at the small end to hold the negative, and another at the large end for the paper. The lens is supported between negative and paper at just the proper focal distance.

All except No. 2 Brownie Post-card are collapsible.

*No. 2 Brownie Post-card Enlarging Camera, for 3¼ x 5½ enlargements from 2¼ x 3¼-inch negatives	\$3.71
*No. 2 Brownie Enlarging Camera, for 5 x 7 enlargements from 2¼ x 3¼-inch negatives	4.86
*No. 3 Ditto, for 6½ x 8½ enlargements from 3¼ x 4¼-inch negatives, also for proportionate enlargements from smaller negatives	6.38
*No. 3A Ditto, for 7 x 11 and 6¼ x 10½-inch enlargements from 3¼ x 5½ and 2¼ x 4¼-inch negatives, respectively; also for proportionate enlargements from smaller negatives	6.91
*No. 4 Ditto, for 8 x 10, 6¾ x 10 and 5¾ x 9¾-inch enlargements from 4 x 5, 3¼ x 5½ and 2¼ x 4¼-inch negatives, respectively	6.91



## V. P. K. Enlarging Camera

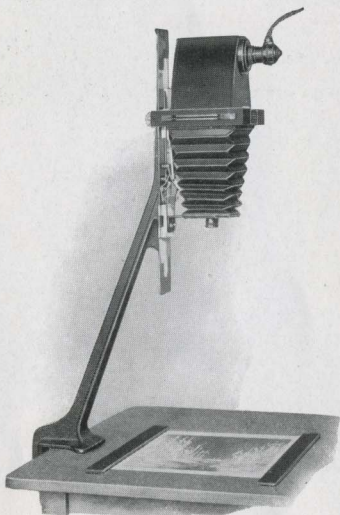
LIKE the Brownie Enlarging Camera in principle, it offers the simplest means for making 3¼ x 5½ enlargements from 1⅝ x 2½ negatives.

*Vest Pocket Kodak Enlarging Camera	\$3.71
-------------------------------------	--------

\*These prices include the Excise War Tax.

## The Kodak Auto-Focus Enlarger

WITH this new self-focusing camera, enlarging becomes almost as easy and rapid as contact printing, because as the camera is moved up and down on its standard, to make the image larger or smaller, the focus stays sharp.



The standard clamps to an ordinary table and the bromide paper lies flat on the table top, where it is held in position by a quickly adjusted paper holder.

Prints from  $1\frac{1}{2}$  to  $3\frac{1}{2}$  diameters can be made from either plate or film negatives up to 4 x 6 inches. The largest possible print is 14 x 21. V. P. K. negatives will make  $5\frac{5}{8}$  x  $8\frac{3}{4}$  enlargements.

The lens is a Kodak Anastigmat, which insures sharpness.

A diffusing disc is supplied separately for soft focus effects.

Kodak Auto-Focus Enlarger with Kodak Anastigmat Lens, electric cord and plug (without the 60 Watt Mazda Lamp required), set of six flexible metal masks (with Excise Tax included) . . . . . \$35.00  
 Diffusing Disc . . . . . 1.00

## Kodak Enlarging Outfit

THIS Outfit will make enlargements up to the size of the easel (14 x 17 inches) from film or glass negatives up to 4 x 6 inches. It consists of a camera of the focusing type, lens, easel, lamp housing, light cord and plug, but without the 60-watt Mazda electric light bulb. With a portrait attachment, reductions may be made for lantern slides.

Kodak Enlarging Outfit (with Excise Tax included) . . . . . \$20.00  
 Lantern Slide Block . . . . . .75  
 Portrait Attachment No. 5 . . . . . .75

Compliments of the Digitized Kodak Catalog Project: 1886 - 1941

# Velox Paper

VELOX is a developing-out paper that prints by artificial light, and therefore permits the amateur to utilize his evening hours in print making. Simplicity of manipulation and variety of grades and surfaces make it suitable for all amateur uses.

Velox papers are divided broadly into three degrees of contrast called "Contrast," "Regular," and "Special," each division containing a variety of surfaces. (See adjoining table.)

"Contrast" Velox will secure the best possible results from extremely thin or from dense flat negatives. "Regular" Velox should be used when printing from flat negatives. "Special" papers should be

used with average as well as contrasty negatives. Velvet Velox gives semi-gloss prints of exceptional quality and is generally used for making prints from Kodak negatives.

Royal Velox, coated on an India tint stock, is just rough enough to produce soft mellow-tinted prints.

GRADE	SURFACE	CONTRAST
*Velvet Velox	Semi-Gloss	Special
*Velvet Velox	Semi-Gloss	Regular
*Velvet Velox	Semi-Gloss	Contrast
*Portrait Velox	Smooth Matte	Special
Carbon Velox	Matte	Special
Carbon Velox	Matte	Regular
Carbon Velox	Matte	Contrast
*Glossy Velox	Enameled	Special
*Glossy Velox	Enameled	Regular
Glossy Velox	Enameled	Contrast
Royal Velox	Matte	Special
Royal Velox	Matte	Regular

\*Furnished also in Double Weight Velox. Double weight papers require no mount and when printed under a mask, which will insure a white margin, afford a very artistic effect.

## Prices

Size Inches	SINGLE WEIGHT			DOUBLE WEIGHT		
	Dozen	½ Gross	Gross	Dozen	½ Gross	Gross
1½ x 2½	\$0.12		\$1.10	\$0.15		\$1.40
2¼ x 3¼	.12		1.10	.15		1.40
2½ x 4¼	.15		1.35	.20		1.70
3½ x 3½	.15		1.60	.20		2.00
3¼ x 4¼	.20		1.75	.25		2.20
2½ x 4½	.20		1.75	.25		2.20
3¼ x 5½	.20		2.00	.25		2.50
4 x 5	.25		2.30	.30		2.90
2¼ x 7	.20		2.00	.25		2.50
4¼ x 6½	.30		3.05	.40		3.80
5 x 7	.40	\$2.10	3.90	.50	\$2.60	4.90
3½ x 12	.50	2.60	4.75	.60	3.10	5.95
Velox Post-cards, 3½ x 5½, furnished in Regular Velvet, Special Velvet, and Contrast Velox, Special Portrait, Regular Glossy, Special Glossy and Regular Royal and Special Royal				.30	1.50	2.90
Ditto, Double Post-cards, 3½ x 11 inches				.60	3.00	5.80

## Velox Sundries

Nepera Solution, per 4-ounce bottle . . . . .	\$.28
Ditto, per 16-ounce bottle . . . . .	.84
Nepera Auxiliary Powders (for converting Nepera Solution to a film or plate developer), per package 1 dozen . . . . .	.35
Velox Re-developer for Sepia Tones, per 4-ounce bottle . . . . .	.50
*Ditto, 2 ounces (sufficient for 150 4 x 5 prints) . . . . .	.30
*Velox Re-developer Tubes, for sepia toning, per package 12 tubes . . . . .	.84
Velox Liquid Hardener, per 4-ounce bottle . . . . .	.25
Ditto, 8-ounce bottle . . . . .	.35
Kodak Acid Fixing Powder for fixing Velox Prints, per pound . . . . .	.35
Ditto, 1/2 pound . . . . .	.20
Ditto, 1/4 pound . . . . .	.15

\*Package also includes bleaching agent.

## Kodak Velvet Green

EFFECTS heretofore to be had only by the carbon process can be secured by any amateur photographer with this paper. For landscapes, for marine scenes, and in fact, for the majority of outdoor amateur negatives, the rich green of prints on Kodak Velvet Green produces most beautiful and harmonious effects, with an indescribable "atmosphere" of nature itself.

And to use this paper the amateur need not learn new processes, nor possess extraordinary skill. Anyone who can print on Velox paper can print just as successfully on Kodak Velvet Green, as the two processes after exposure are identical, except for a slight change in the fixing bath.

As this paper is much slower than the average developing-out paper, it is advisable to print by daylight.

The surface—a smooth semi-matte—brings out detail fully, and the paper is supplied in both single and double weights.

Kodak Velvet Green Post-cards are very appropriate for use at vacation time.

Prices are the same as for Velox, and it is obtainable in all the Velox sizes. (See page 47.)

# Eastman Bromide Papers

FOR enlargements Eastman Bromide Papers are emphatically faster than the other developing papers and as easy to use as Velox. Redevelopment on Royal Bromide gives Sepia effects. Grades: Velvet, Brilliant Velvet, Royal, Enameled, Matte-enamel, and Standard B and C.

Size	Per Doz.	Size	Per Doz.	Size	Per Doz.
5 x 7	\$0.50	8 x 10	\$1.10	14 x 17	\$3.15
5 x 8	.55	10 x 12	1.70	16 x 20	4.20
6½ x 8½	.80	11 x 14	2.10	18 x 22	5.25

Other sizes in proportion

## Solio Paper

A rapid, glossy, printing-out paper

Size	Per Package, 2 Doz.	Size	Per Package, 2 Doz.
1½ x 2½	\$0.20	2¼ x 7 (No. 1 Panoram Kodak)	\$0.30
2¼ x 3¼	.20		
2½ x 4¼	.25		
3½ x 3½	.25	4¼ x 6½	\$0.25
3¼ x 4¼	.25	5 x 7	.30
2½ x 4½	.25	3½ x 12 (No. 4 Panoram Kodak)	.35
3¼ x 5½	.30	Post-cards	.20
4 x 5	.40	Double Solio Post-cards	.40

Solio Toning and Fixing Powders, per carton, 5 tubes, \$0.25. Solio Combined Toning and Fixing Solution, per 8-ounce bottle, \$0.50. Ditto, 4-ounce bottle, \$0.30; post-paid, \$0.50. Solio Hardener, per 8-ounce bottle, \$0.70.

## Glass Dry Plates

(Prices of plates include Excise Tax)

Seed (Single Coated)		Seed Non-Halation Ortho (Double Coated)		Wratten & Wainwright Panchromatic	
Size	Per Doz.	Size	Per Doz.	Size	Per Doz.
3½ x 3½	\$0.57	3¼ x 4¼	\$0.83	3½ x 3½	\$0.67
3¼ x 4¼	.67	3¼ x 5½	1.14	3¼ x 4¼	.83
3¼ x 5½	.93	4 x 5	1.14	3¼ x 5½	1.14
4 x 5	.93	4¼ x 6½	1.71	4 x 5	1.14
4¼ x 6½	1.35	5 x 7	1.86	4¼ x 6½	1.71
5 x 7	1.50			5 x 7	1.86
Lantern Slide Plates, 3¼ x 4	\$0.52	Cover Glass for Lan- tern Slides	\$0.40	Lantern Slide Binders, per package, 50 strips,	\$0.20

## Kodak Cut Film

**K**ODAK Cut Film offers every advantage of plates and, in addition, is non-halation, weighs but a fraction as much, is easier to handle, unbreakable and produces negatives of superior quality. Through the agency of the Combination Back (page 51) and Kodak Cut Film Sheath, Nos. 3 and 3A Kodaks both regular and *Special* models, may be adapted for use with Kodak Cut Film.

It is supplied in two speeds.

The regular Kodak Cut Film is equal in speed to the best portrait plate emulsions, and is standard in every respect.

Kodak Cut Film Super Speed has, as its name implies, an extra fast emulsion, yet its latitude, gradation and fineness of grain are equal to those of the regular speed. It can be depended on to give the best possible negatives under difficult light conditions or when an exposure must necessarily be short. This super speed feature proves its worth especially when making indoor portraits or snapshots in the shade. And all this added speed is attained without sacrificing any of those qualities on which film superiority is founded.

	$3\frac{1}{4} \times 4\frac{1}{4}$	$3\frac{1}{4} \times 5\frac{1}{2}$
Kodak Cut Film, per dozen . . . . .	\$0.67	\$0.93
Kodak Cut Film, Super Speed, per dozen . . . . .	.77	1.03

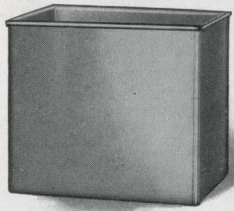
*The price of Kodak Cut Film includes the Excise Tax*

## Kodak Cut Film Sheath

**A**DAPTS a plate holder to the use of Kodak Cut Film. It is made of aluminum ribbed for rigidity and instantly inserted or removed.

	$3\frac{1}{4} \times 4\frac{1}{4}$	$3\frac{1}{4} \times 5\frac{1}{2}$
Kodak Cut Film Sheath . . . . .	\$0.10	\$0.15

## Kodak Developing Box, No. 1



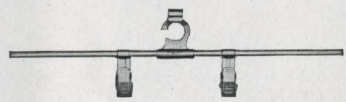
**T**HIS tank provides a swift and easy means of obtaining uniform development of Kodak Cut Film. It takes twelve films, each suspended in the solution from a Kodak Film Developing Hanger. Development proceeds by the time and temperature method.

The tank is made of monel metal and measures  $4 \times 5\frac{1}{4} \times 6$  inches.

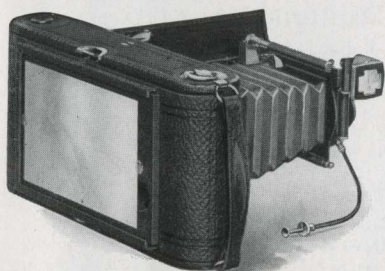
Kodak Developing Box, No. 1, without hangers . . . \$2.00

## Kodak Cut Film Developing Hanger

**F**OR use with the Kodak Developing Box, No. 1. It is considerably longer than the box so that it lies securely across the top. The clips, which grip the edges of the film securely, are of monel metal.



Kodak Film Developing Hangers, each . . . . . \$0.20



## Combination Backs

THESE backs are made for use with the Nos. 3 and 3A Autographic Kodaks, Regular and *Special*, in place of the regular Autographic Back. They accommodate double plate holders and a removable ground glass for focusing. With the addition of Kodak Cut Film Sheath, the Combination Back further equips the camera for use with Kodak Cut Film. (See page 50.)

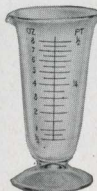
Combination Back with ground glass, for Nos. 3 or 3A "Regular" . . . . .	\$4.00
Ditto, for No. 3 <i>Special</i> . . . . .	4.50
Ditto, for No. 3A <i>Special</i> . . . . .	5.00
Double Plate holders for any of above, each . . . . .	1.50

## Eastman Visible Graduate

THIS new moulded graduate, as its name implies, may be easily read in the dark room under the rays of the ruby light.

The graduations are opaque, not translucent as is the case with most graduates.

2-ounce . . . . .	\$0.30	8-ounce . . . . .	\$0.50
4-ounce . . . . .	.40	16-ounce . . . . .	.80



## Eastman Thermometer



ESPECIALLY valuable in tank or tray development. The hook for suspending and the curved back to fit inside the tank are two of its desirable features.

Eastman Thermometer . . . . .	\$0.75
-------------------------------	--------

## Thermometer Stirring Rod



A COMBINED stirring rod and thermometer. Carefully tested and accurate. Has flat end for pulverizing. The rod is  $\frac{1}{4}$  inch in diameter and  $9\frac{1}{4}$  inches long. Thermometer Stirring Rod . . . . . \$1.00

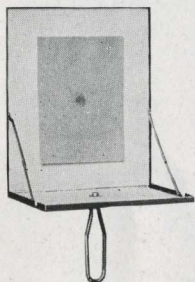
## Developing Trays

Bull's-Eye—Composition			Enamel	
$3\frac{1}{4} \times 4\frac{1}{4}$ . . . . .	\$0.15	$4 \times 6$ . . . . .	$2\frac{1}{2} \times 7$ . . . . .	\$0.75
$4 \times 5$ . . . . .	.17	$5 \times 8$ . . . . .	$3\frac{1}{2} \times 12$ . . . . .	.75
			$4 \times 5$ . . . . .	\$0.75
			$4 \times 6$ . . . . .	.85
			$5 \times 7$ . . . . .	1.10

## Flash Light Material

**T**HE Flash Light makes the amateur photographer independent of daylight. He has absolute control of the illumination, not only as to the amount of light, but also its direction.

The simplest method of making flash light pictures is by means of the Eastman Flash Sheets and Kodak Flash Sheet Holder. The sheets burn slowly, giving a broad, soft light, while the holder makes their proper use conveniently easy.



No. 1 Flash Sheets, per package of 1/2 dozen sheets, 3 x 4-inch	\$0.35
No. 2 Flash Sheets, per package of 1/2 dozen sheets, 4 x 5-inch	.56
No. 3 Flash Sheets, per package of 1/2 dozen sheets, 5 x 7-inch	.84
Kodak Flash Sheet Holder . . . . .	1.25

Flash cartridges are recommended only where absolutely instantaneous exposures are required.

Eastman Spreader Flash Cartridges, for use with pistol or fuse (price includes both fuse and cap), per package of 1/2 dozen	\$0.50
Eastman Spreader Flash Cartridge Pistol . . . . .	1.50
Eastman No. 1 Flash Cartridges, for use only with fuse, per package of 1/2 dozen . . . . .	1.00
Ditto No. 2 . . . . .	.70
Ditto No. 3 . . . . .	.45

## Kodak Dry Mounting Tissue

**M**OUNTS prints even on thin mounts without curl. Just fix the tissue on print, lay on mount and press with a warm flat iron; no sticky fingers, no muss of any kind.

### Prices

Size, 3 1/2 x 3 1/2, 3 dozen . . . . .	\$0.10	Size, 4 x 5, 2 dozen . . . . .	\$0.10
Size, 3 1/4 x 4 1/4, 3 dozen . . . . .	.10	Size, 4 1/4 x 6 1/2, 1 dozen . . . . .	.10
Size, 3 1/4 x 5 1/2, 2 dozen . . . . .	.10	Size, 5 x 7, 1 dozen . . . . .	.10

## Kodak Photo Paste

**T**HE weighted friction cap, and the spreader top of the tube eliminate muss and fuss.

2-ounce tube. . . . . \$0.15



## Eastman Photo Paste

**A** SOLID, first quality white paste that will not discolor print or mount.

4-ounce jar . . . . .	\$0.25
8-ounce jar . . . . .	.35





## The Kodak Album



LOOSE-LEAF, open back style. Made of finest quality genuine leather and finished in a new pattern—etched brocade polychrome in blended soft olive grey and brown tints. Stamped with word "Photographs." 50 black leaves held in place by silk finished cord through cover and metal tubes.

5 x 8, GA, Olive Grey Blend . . . . .	\$2.50	BA, Brown Blend Cover . . . . .	\$2.50
7 x 11, GB, Olive Grey Blend . . . . .	3.75	BB, Brown Blend Cover . . . . .	3.75
10 x 12, GC, Olive Grey Blend . . . . .	5.50	BC, Brown Blend Cover . . . . .	5.50
11 x 14, GD, Olive Grey Blend . . . . .	6.00	BD, Brown Blend Cover . . . . .	6.00

Package 12 extra leaves, Size A (5 x 8) \$0.15; Size B (7 x 11) \$0.18;  
Size C (10 x 12) \$0.30; Size E (11 x 14) \$0.40.

## The Beverly Album

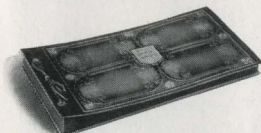
LOOSE-LEAF, open back style—a new and especially handsome model. Cover is of De Luxe Artificial Leather, blue black, seal grain finished. The word "Photographs" set in an engraved ribbed panel is raised embossed in old gold in upper left corner of cover; 50 black leaves held in place by silk finished cord through cover and metal tubes.



A, 5x8 . . . \$2.00	B, 7x11 . . . \$2.75	C, 10x12 . . . \$4.00	D, 11x14 . . . \$4.50	E, 8x10 . . . \$3.00
---------------------	----------------------	-----------------------	-----------------------	----------------------

Package 12 extra leaves, Size A (5 x 8) \$0.15; Size B (7 x 11) \$0.18;  
Size C (10 x 12) \$0.30; Size E (11 x 14) \$0.40; Size K (8 x 10) \$0.20.

## The Colonial Album



LOOSE-LEAF, open back style, added this year. Cover is of De Luxe Artificial Leather. The beautiful design in polychrome covers the entire surface and in center the words "Ye Photo Album" are raised embossed in color; 50 black leaves held in place by silk finished cord through cover and metal tubes. This is a most attractive album.

A, 5 x 8 . . . . .	\$2.00	B, 7 x 11 . . . . .	\$2.75	C, 10 x 12 . . . . .	\$4.00	D, 11 x 14 . . . . .	\$4.50
--------------------	--------	---------------------	--------	----------------------	--------	----------------------	--------

Package 12 extra leaves, Size A (5 x 8) \$0.15; Size B (7 x 11) \$0.18;  
Size C (10 x 12) \$0.30; Size E (11 x 14) \$0.40.

## The Damascus Album

LOOSE-LEAF, open back style; 50 black loose leaves held in place by a cord through covers and metal tubings. De Luxe Artificial Leather, embossed and tinted in Art Craft shades.



A, 5 x 8 . . . . .	\$2.00	B, 7 x 11 . . . . .	\$2.75	C, 10 x 12 . . . . .	\$4.00	D, 11 x 14 . . . . .	\$4.50
--------------------	--------	---------------------	--------	----------------------	--------	----------------------	--------

Package 12 extra leaves, Size A (5 x 8) \$0.15; Size B (7 x 11) \$0.18;  
Size C (10 x 12) \$0.30; Size E (11 x 14) \$0.40.

## The Agrippa Album



LOOSE-LEAF style. Choice of genuine beautiful black grain leather or embossed black cloth cover; 50 black leaves held in place by cord and holder inside of cover.

5 x 8 . . . . .	CA, cloth \$1.15	LA, leather . . . . .	\$2.25
7 x 11 . . . . .	CB, cloth 1.60	LB, leather . . . . .	3.25
10 x 12 . . . . .	CC, cloth 2.25	LC, leather . . . . .	5.00
9 x 14 . . . . .	CD, cloth 2.50	LD, leather . . . . .	5.25

Package 12 extra leaves, Size A (5 x 8) \$0.15; Size B (7 x 11) \$0.18;  
Size C (10 x 12) \$0.30; Size D (9 x 14) \$0.35.

## The La Nouvelle Album

LOOSE-LEAF, open back style. 50 black leaves held in place by cord through cover and metal tubes. The word "Photographs" stamped in gold on cover. The cover is an attractively embossed dark brown alligator pattern, imitation leather.



A, 5 x 8 . . . . .	\$1.10	C, 10 x 12 . . . . .	\$2.25
B, 7 x 11 . . . . .	1.60	D, 11 x 14 . . . . .	2.50

Package 12 extra leaves, Size A (5 x 8) \$0.15; Size B (7 x 11) \$0.18;  
Size C (10 x 12) \$0.30; Size E (11 x 14) \$0.40.

## The Ajax Album

LOOSE-LEAF, closed back style. 50 leaves are held in place by cord and holder inside of cover. Choice of black seal grain or brown duotinted alligator—both extra quality artificial leather. The word "Photographs" stamped in gilt foil on cover.

5 x 8, BA, black . . . . .	\$1.35	NA, brown alligator . . . . .	\$1.50
7 x 11, BB, black . . . . .	1.80	NB, brown alligator . . . . .	2.00
10 x 12, BC, black . . . . .	2.75	NC, brown alligator . . . . .	3.00
9 x 14, BD, black . . . . .	3.00	ND, brown alligator . . . . .	3.25

Package 12 extra leaves, Size A (5 x 8) \$0.15; Size B (7 x 11) \$0.18;  
Size C (10 x 12) \$0.30; Size D (9 x 14) \$0.35.

## The Juno Album

LOOSE-LEAF, open back style; 50 black loose leaves held in place by metal tubing and cord through covers. Brown or black imitation leather cover. The word "Photographs" stamped in gilt foil on cover.



5 x 8, BA, brown or CA, black . . . . .	\$1.15
7 x 11, BB, brown or CB, black . . . . .	1.60
10 x 12, BC, brown or CC, black . . . . .	2.25
11 x 14, BD, brown or CD, black . . . . .	2.50

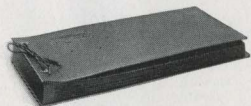
Package 12 extra leaves, Size A (5 x 8) \$0.15; Size B (7 x 11) \$0.18;  
Size C (10 x 12) \$0.30; Size E (11 x 14) \$0.40.

## The Amateur Folder

JUST the thing for carrying or mailing favorite pictures. Made of durable, marble grey cover stock. The picture is inserted under the corners which hold it securely.

No.		Price per doz.
1	for 2¼ x 3¼, prints upright or horizontal . . . . .	\$0.50
1A	for 2½ x 4¼, prints upright or horizontal . . . . .	.55
2C	for 2¾ x 4¾, prints upright or horizontal . . . . .	.57
3A	for 3¼ x 5½, prints upright or horizontal . . . . .	.60

## The Rhodes Album



LOOSE-LEAF, open back style—choice of genuine black grained leather or embossed black book cloth with 50 black leaves held in place by metal tubes and cord through cover. Cover stamped in foil with word "Photographs."

5 x 8 . . . . .	CA, cloth	\$0.90	LA, leather	. . . . .	\$2.00
7 x 11 . . . . .	CB, cloth	1.35	LB, leather	. . . . .	3.00
10 x 12 . . . . .	CC, cloth	2.00	LC, leather	. . . . .	4.75
11 x 14 . . . . .	CD, cloth	2.25	LD, leather	. . . . .	5.00
8 x 10 . . . . .	CE, cloth	1.50	LE, leather	. . . . .	3.25
Package 12 extra leaves, Size A (5 x 8) \$0.15; Size B (7 x 11) \$0.18; Size C (10 x 12) \$0.30; Size E (11 x 14) \$0.40; Size K (8 x 10) \$0.20.					

## The Toledo Album

LOOSE-LEAF style. No exposed metal parts. 50 jet black leaves held in place by a cord and holder inside of cover. Cover is made of De Luxe Artificial Leather embossed and beautifully tinted in multi-shades.



A, 5 x 8 . . . . .	\$2.00	B, 7 x 11 . . . . .	\$2.75	C, 10 x 12 . . . . .	\$4.00	D, 11 x 14 . . . . .	\$4.50
Package 12 extra leaves, Size A (5 x 8) \$0.15; Size B (7 x 11) \$0.18; Size C (10 x 12) \$0.30; Size E (11 x 14) \$0.40.							

## The Artist Album



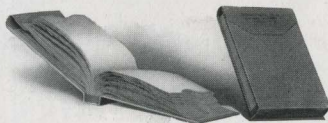
A LOOSE-LEAF album with embossed black paper cover. Has 10 black leaves held in place by cord through cover. Just right to give to your friends as an inexpensive souvenir of some event recorded photographically, such as a vacation, auto trip, or picnic.

No. 1, 5½ x 7 . . . . .	. . . . .	\$0.25
Extra leaves, package of 5 . . . . .	. . . . .	.09
No. 4, 7 x 10 . . . . .	. . . . .	.35
Extra leaves, package of 5 . . . . .	. . . . .	.12

## Eastman Film Negative Albums

THESE albums afford a safe, convenient and efficient way of keeping film negatives. Each leaf is, itself, an envelope, and the negatives do not come in contact with each other. The index furnishes a ready reference.

For 100 negatives, 1⅝ x 2½ . . . . .	\$0.75
For 100 negatives, 2½ x 4¼ or smaller . . . . .	.75
For 100 negatives, 3¼ x 4¼ or 4 x 5 or smaller . . . . .	1.00
For 100 negatives, 3¼ x 5½ or smaller . . . . .	1.00
For 100 negatives, 5 x 7 or smaller . . . . .	1.50



## The Safety Photo Mailer

TOUGH Crafts envelope—double scored corrugated board—lockseal. The mailer that insures safe arrival of your prints, and mounted or unmounted enlargements.

No.	Size Card or Print	Outside Size of Mailer	Price per 100
A—	5 x 7 or smaller;	6½ x 8½	\$ 9.00
B—	9⅝ x 11⅝ or smaller;	10½ x 12½	15.00
C—	11⅝ x 13⅝ or smaller;	13 x 14½	17.50
D—	12⅝ x 15⅝ or smaller;	13¾ x 16¾	25.00
E—	17¼ x 20¼ or smaller;	18½ x 21½	35.00

# Kodak Card Mounts

The Baltic—Buff, Brown or Grey

Heavy stock, beveled edges, heavy borders. Sold only in lots of fifty, one kind and size.

No.	For Prints	Size of Mount	Per 100	Per 50	No.	For Prints	Size of Mount	Per 100	Per 50
0	1 5/8 x 2 1/2	3 3/8 x 4 1/4	\$2.10	\$1.05	2C	2 7/8 x 4 7/8	5 1/8 x 7 1/8	\$3.10	\$1.55
1	2 1/4 x 3 1/4	4 3/8 x 5 3/8	2.60	1.30	3A	3 1/4 x 5 1/2	5 3/4 x 8	3.40	1.70
1A	2 1/2 x 4 1/4	4 1/2 x 6 1/4	2.80	1.40	4	4 x 5	6 x 7	4.00	2.00
2	3 1/2 x 3 1/2	5 1/2 x 5 1/2	3.00	1.50	4A	4 1/4 x 6 1/2	6 1/2 x 8 3/8	5.00	2.50
3	3 3/4 x 4 1/4	5 3/8 x 6 3/8	3.00	1.50	5	5 x 7	8 x 10	6.20	3.10

## Riviera—Ash Grey and White

For Prints	Size of Mount	Per 100	Per 50	For Prints	Size of Mount	Per 100	Per 50
1 1/2 x 2	3 x 3 1/8	\$1.25	\$0.65	3 1/4 x 4 1/4	4 1/4 x 5 9/16	\$1.85	\$0.95
1 5/8 x 2 1/2	3 x 3 3/8	1.35	.70	2 7/8 x 4 3/8	4 1/2 x 6 1/2	2.15	1.10
2 1/4 x 2 3/4	3 5/8 x 3 5/8	1.50	.75	4 x 5	5 1/8 x 6 7/8	2.35	1.20
2 1/4 x 3 1/4	3 3/8 x 4 3/8	1.60	.80	3 1/4 x 5 1/2	5 x 7 1/4	2.35	1.20
2 1/2 x 4 1/4	4 3/8 x 5 3/4	1.85	.95	4 1/4 x 6 1/2	5 3/4 x 8	3.10	1.60
3 1/2 x 3 1/2	5 x 5	1.85	.95	5 x 7	7 x 9	3.40	1.75

## Landscape—Ash Grey and Artist Brown

No.	Color	For Prints	Size of Mount	Per 50	No.	Color	For Prints	Size of Mount	Per 50
A1	Grey	5 x 7	8 x 10	\$3.00	C1	Grey	8 x 10	12 x 14	\$5.00
A2	Brown	5 x 7	8 x 10	3.00	C2	Brown	8 x 10	12 x 14	5.00
B1	Grey	6 1/2 x 8 1/2	10 x 12	4.00	D1	Grey	7 x 11	11 x 15	5.25
B2	Brown	6 1/2 x 8 1/2	10 x 12	4.00	D2	Brown	7 x 11	11 x 15	5.25

## Enlargement Folder

This new Enlargement Folder is supplied in olive grey or brown, the former with white insert, and the latter, sepia-buff insert. Either style is furnished with both oval and rectangular masks.

No.	Color	For Prints	Size of Mount	Per Pkg. 1/2 Doz.	No.	Color	For Prints	Size of Mount	Per Pkg. 1/2 Doz.
A1	White	5 x 7	7 1/2 x 9 1/2	\$0.81	C1	White	6 x 10	9 x 13	\$1.05
A2	Buff	5 x 7	7 1/2 x 9 1/2	.81	C2	Buff	6 x 10	9 x 13	1.05
B1	White	6 1/2 x 8 1/2	8 3/4 x 10 3/4	.93	D1	White	8 x 10	10 3/4 x 13	1.11
B2	Buff	6 1/2 x 8 1/2	8 3/4 x 10 3/4	.93	D2	Buff	8 x 10	10 3/4 x 13	1.11

## De Luxe Enlargement Mount

White and India Buff stock. All edges deckled. A rich mounter for the favorite enlargement.

No.	Color	For Prints	Size of Mount	Per Doz.	No.	Color	For Prints	Size of Mount	Per Doz.
A1	White	3 1/4 x 5 1/2	7 1/4 x 9 1/2	\$0.75	G1	White	6 x 10	10 x 14	\$1.40
A2	India	3 1/4 x 5 1/2	7 1/4 x 9 1/2	.75	G2	India	6 x 10	10 x 14	1.40
D1	White	5 x 7	9 1/8 x 11 3/8	1.00	H1	White	8 x 10	12 x 14	1.50
D2	India	5 x 7	9 1/8 x 11 3/8	1.00	H2	India	8 x 10	12 x 14	1.50
F1	White	6 1/2 x 8 1/2	10 3/4 x 12 3/4	1.20	J1	White	7 x 11	11 x 15	1.56
F2	India	6 1/2 x 8 1/2	10 3/4 x 12 3/4	1.20	J2	India	7 x 11	11 x 15	1.56

## Inslip Enlargement Mount—English Grey or Sepia-Buff

No.	For Prints	Size of Mount	Price	No.	For Prints	Size of Mount	Price
AA	3 1/4 x 5 1/2	7 3/4 x 9 3/4	Doz. \$0.90	FF	6 x 10	10 5/8 x 14 5/8	Doz. \$1.26
BB	4 x 7	8 3/4 x 11 3/8	Doz. .90	GG	7 x 11	11 5/8 x 15 3/8	Doz. 1.50
CC	5 x 7	9 3/8 x 11 3/8	Doz. .90	HH	8 x 10	12 5/8 x 14 5/8	Doz. 1.50
DD	5 x 8 1/2	9 5/8 x 13 1/8	Doz. 1.02	JJ	8 x 14	14 1/4 x 20 1/4	1/2 Doz. 1.02
EE	6 1/2 x 8 1/2	11 5/8 x 13 3/8	Doz. 1.14	KK	11 x 14	17 1/4 x 20 1/4	1/2 Doz. 1.86

## Kodak Card Mounts—Continued

### The Drimount—English Grey or Sepia-Buff

No.	For Prints	Size of Mount	Price	No.	For Prints	Size of Mount	Price
AA	3¼ x 5½	7¼ x 9½	Doz. \$0.45	FF	6 x 10	10¾ x 14¾	Doz. \$0.66
BB	4 x 7	8½ x 11½	Doz. .48	GG	7 x 11	11¾ x 15¾	Doz. .78
CC	5 x 7	9½ x 11½	Doz. .51	HH	8 x 10	12¾ x 14¾	Doz. .78
DD	5 x 8½	9¾ x 12¾	Doz. .60	JJ	8 x 14	14 x 20	½ Doz. .66
EE	6½ x 8½	11¾ x 13¾	Doz. .63	KK	11 x 14	17 x 20	½ Doz. .81

### Stereo Mounts

Size of Mount 3½ x 7 . . . Color, Queen's Grey . . . Per 100, \$1.30 . . . Per 50, \$0.65

## Tripods Kodak Metal

**T**HE Kodak Metal Tripods, which are light, compact and rigid, have telescoping legs of brass tubing. The three lower sections, finished in nickel, fit into the upper section which is finished in black enamel.

When closed, the full length is, in different models, from 11¾ to 15½ inches—convincing evidence that they are conveniently carried.

There are six models to select from.

The Nos. 1 and 2 have revolving heads, permitting the camera to swing so as to take in the desired view without moving the tripod. They also have straps for holding the legs in place when closed.

The Nos. 1C and 2C have solid heads, but do not have straps for holding legs.



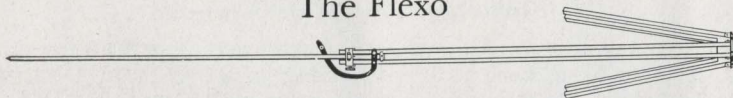
**T**HE No. 6 has a special folding head permitting the legs to fold flat. The head contains a patented hinge so that when folded the three legs of the tripod are parallel to each other in the same plane rather than set in the usual triangular form. The result is a narrow shape, which with an extremely short length makes the No. 6 when closed the easiest to carry of all this easily carried family.

The illustration above shows the No. 6 projecting from a No. 6 Leather Carrying Case.

### Details

	Sections	Length		Weight	Price
		Closed	Extended		
Kodak Metal Tripod No. 0	3	15½ inches	39½ inches	15 ounces . .	\$2.75
Kodak Metal Tripod No. 1C	4	15¼ inches	48¾ inches	25½ ounces . .	4.00
Kodak Metal Tripod No. 1	4	15 inches	48½ inches	24½ ounces . .	4.50
Kodak Metal Tripod No. 2C	5	13¼ inches	49¾ inches	26 ounces . .	4.50
Kodak Metal Tripod No. 2	5	13½ inches	49½ inches	25 ounces . .	5.00
Kodak Metal Tripod No. 6	6	11¾ inches	40 inches	24 ounces . .	6.50
Leather Carrying Case, for Nos. 0 to 2, inclusive . . . . .					2.70
Ditto, for No. 6 . . . . .					3.15
Leatherette Case, for Nos. 0 and 1 . . . . .					.90
Rubber Tips for Metal Tripod Spurs (per set of 3) . . . . .					.10

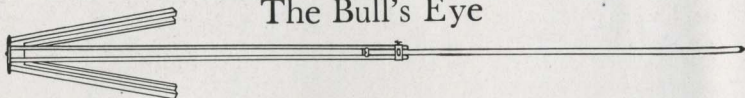
## The Flexo



Two sections. Fixed, non-detachable head. Only clear, straight-grained wood is used in its construction. Length, extended, 53 inches; folded, 29 inches. Weight, 18 ounces.

Price, \$1.50

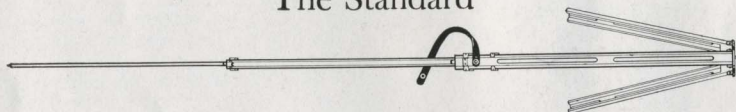
## The Bull's Eye



Two sections. Aluminum revolving head. Made of maple, with brass fittings. For 4 x 5 cameras, or smaller. Length, extended, 42½ inches; folded, 24 inches. Weight, 21 ounces. The two-section tripod that will go into a suitcase.

Price \$2.00

## The Standard



THE feature of this tripod is the automatic locking of the sections when they are extended. Light, compact and rigid. Fixed, non-detachable head. Length, folded 21 inches, extended 53½ inches. Weight, 18 ounces. Cherry finish, brass trimmings.

Price \$3.50

## Vest Pocket Kodak Tripod Adapter



VEST Pocket Kodaks have been compressed into such small space that not even a spare cubic quarter of an inch is available for tripod sockets.

This little device is designed as a substitute for them. It can be affixed in a few turns to a tripod head, to the Optipod or to the Kodapod. Choice of sockets permits placing for vertical or horizontal pictures. The camera may be instantly slipped into the Adapter where it is firmly held by a spring clamp.

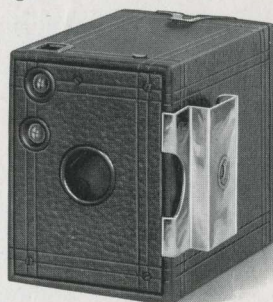
Vest Pocket Kodak Tripod Adapter . . . . . \$0.50

## Brownie Tripod Adapter

THE Brownie Tripod Adapter is designed for use on the Nos. 0, 2 and 2A Brownie cameras which are of the box type and not equipped with tripod sockets.

The illustration shows the Adapter attached to the side of the No. 0 Brownie. The two hooked prongs at the side of the Adapter are inserted in the narrow space between the front board and the camera frame. For taking horizontal pictures it is placed in the position illustrated and for taking vertical pictures it is inserted at the bottom instead of the side.

The camera may then be attached to a tripod head or to the Optipod or Kodapod (illustrated below) by merely turning the tripod screw, into the threaded hole in the Adapter.

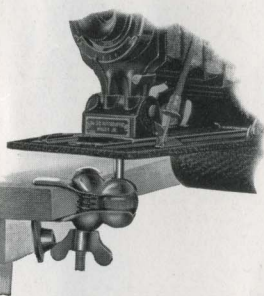


Brownie Tripod Adapter. . . . . \$0.25

## The Optipod

THE Optipod is a combined tripod head and clamp which may be used effectively as a tripod when clamped to a chair, table, automobile, motorcycle, or any substantial object. It is small and light, slipping readily into the pocket and may be carried without inconvenience.

When used in connection with a tripod, the Optipod gives the advantage of its ball and socket joint, permitting the camera to be tilted to any desired angle. This feature is especially desirable when photographing objects at close range and when it is impossible to place a tripod alone, in the desired position.

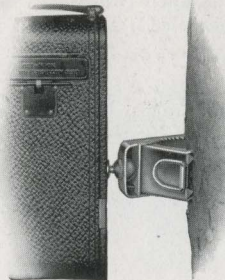


The Optipod . . . . . \$1.25

## The Kodapod

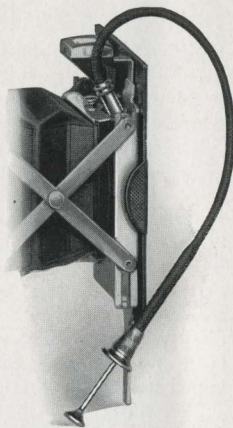
THE little Kodapod—which is carried easily in the pocket—takes the place of a tripod, when a tree, fence, or similar object is near at hand. Its jaws have a bulldog grip that holds the wood like a vise, and likewise the Kodak, firmly in position. By means of a clamping screw, the camera may be adjusted to the correct vertical or horizontal position. It fits any standard tripod socket.

The Kodapod . . . . . \$1.75



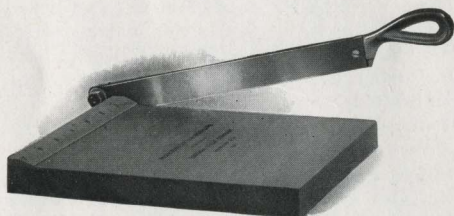
## Vest Pocket Kodak Cable Release Attachment

VEST Pocket Kodaks are so compact that there is no space for a cable release. But for those who prefer it, a cable release attachment is made. This consists merely of a nickeled plate attached by a screw to the back of the front board. The plate contains a socket into which the cable release is screwed. The attachment is especially valuable for those who wish to use the Kodak Self Timer with their Vest Pocket Kodaks.



Vest Pocket Kodak Cable Release (No. 20) . . . . . \$0.50

## Kodak Trimming Boards



MADE of hard wood, with natural finish, have fine quality steel blades and are fitted with rule.

No. 1, capacity, 5 x 5 inches \$0.65  
No. 2, capacity, 7 x 7 inches .85

## Kodak Print Roller

THE best roller constructed for amateur use. Has two 6-inch rubber rollers and finely nickeled frame.

Kodak Print Roller . . . . . \$1.00



## Flexo Print Roller

A THOROUGHLY practical roller for mounting. Has 4-inch rubber roller and black enamel frame.

Flexo Print Roller . . . . . \$0.30





## “How to Make Good Pictures”

A PRACTICAL and profusely illustrated book for the amateur that covers in a simple, understandable way every phase of photography that he is likely to be interested in. 170 pages.

“How To Make Good Pictures” . . . . . \$0.40

### Kodak Film Clip

THIS is a new clip which replaces the No. 2 Junior. It is of entirely new construction designed to secure the maximum amount of grip with its two jaws. Having a width of two inches and a firm grip which prevents the film from slipping, it is particularly adapted for use with large size film but is useful for small film as well. Made in one size only.



Kodak Film Clip . . . . . \$0.30

### Kodak Junior Film Clip No. 1



THE No. 1 clip is the most practical for tray development or drying of films. Two teeth in jaw to prevent film from slipping. One size only.

Kodak Junior Film Clip No. 1, each . . . . . \$0.12

### Eastman Film Developing Clip

A THOROUGHLY dependable clip. Made in two sizes and nickel-plated.

3½-inch, per pair . . . . . \$0.25  
5-inch, per pair . . . . . .40



### Kodak Candle Lamp

THIS clever little lamp is collapsible and can be packed into very small space when not in use. It is made of special, tested ruby fabric, bound in metal frames and gives a strong, safe light for the dark room.

Kodak Candle Lamp . . . . . \$0.40  
Extra Candles for same, per dozen . . . . . .40

### Kodak Dark Room Lamp

THE Kodak Dark Room Lamp is oil burning and is fitted with both orange and ruby glass. It has an unusually broad wick regulated from the outside and gives a soft, steady light for the dark room.

No. 2 Kodak Dark Room Lamp. . . . . \$1.25



## Kodak Safelight Lamp

**T**HE Kodak Safelight Lamp is ideal for all dark room uses, whether the work of the beginner, the advanced amateur, or the professional. The lamp is supplied with a 5 x 7, Series 1, safelight for use with film or plates, not highly color sensitive. Safelights of other series may be obtained, if desired, for more advanced work. It is made of metal; neatly finished in a warm tone of brown and the inside is enameled white to intensify the force of the reflected light from the electric bulb, in the top.



The lamp is supplied complete, with electric fittings excepting electric bulb, including besides the safelight 4½ feet of electric light cord.

Kodak Safelight Lamp . . . . . \$3.25

## Safelights For Kodak Safelight Lamp

- SERIES 00—Yellow light, for use with gaslight papers.
  - SERIES 0—Bright orange light, for use with bromide paper and lantern plates.
  - SERIES 1—Orange safelight, for use with films or plates not highly color sensitive.
  - SERIES 2—Safelight, for extra rapid orthochromatic plates sensitive to green but not red.
  - SERIES 3—Green safelight, for use with red-sensitive panchromatic plates.
  - SERIES 4—Bright green safelight, for use with ordinary plates, for those who cannot use a red light. Not safe for orthochromatic plates.
- Size, 5 x 7 (any series), each . . . . . \$0.75

## Brownie Safelight Lamp

**B**UT little larger than the electric bulb it holds, the Brownie Safelight Lamp screws into an electric socket which may be conveniently situated close to the place where the work is to be done.

The lamp is made of metal, neatly japanned; has circular safelight in the end and side safelight as well. Both safelights are the regular Series 1, and removable so that other series may be used, if desired. A 15 Watt Mazda Lamp is used, but is not supplied.



The Brownie offers a most satisfactory means for dark room lighting where electricity is available.

- Brownie Safelight Lamp . . . . . \$1.35
- Extra Circular End Safelight (any series), each . . . . . .25
- Extra Side Safelight (any series), each . . . . . .40

# Tested Chemicals



**C**ERTAINTY in making negatives and prints depends as much on the quality of your chemicals as on any other one thing. All Kodak chemicals are tested both photographically and for purity before the E. K. C. tested seal is allowed to go upon them.

Eastman, Chemical Outfit consists of M. Q. and Special Developers, Intensifier, Reducer and Velox Re-developer . . . . .	\$0.40
Eastman Special Developer Powders, per package of 5, in sealed glass tubes . . . . .	.30
Eastman Hydrochinon Developer Powders, per dozen . . . . .	.60
Ditto per ½ dozen . . . . .	.30
Ditto per package of 5 powders, in sealed glass tubes . . . . .	.30
Eastman Pyro Developer Powders, per dozen . . . . .	.50
Ditto per ½ dozen . . . . .	.25
Ditto per package of 5 powders, in sealed glass tubes . . . . .	.25
Eastman Tropical Developer, 5 powders, in sealed glass tubes . . . . .	.40
Tozol, per 1-ounce bottle . . . . .	.45
Elon, per 1 ounce . . . . .	.56
Kodolon, per 1 ounce . . . . .	.47
Hydrochinon, per 1-ounce can . . . . .	.21
Eastman Permanent Crystal Pyro, per 1-ounce bottle . . . . .	.27
Velox Re-developer Tubes, package of 12 tubes . . . . .	.84
Hypo Sulphite of Soda, granular, per pound . . . . .	.18
Alum, powdered, per pound . . . . .	.25
Kodak Acid Fixing Powder, per pound package . . . . .	.35
Ditto per ½-pound package . . . . .	.20
Ditto per ¼-pound package . . . . .	.15
Eastman Intensifier, glass tube, per tube . . . . .	.15
Eastman Reducer, per box of 5 tubes . . . . .	.50
Eastman Opaque No. 1, per tube . . . . .	.25
Potassium Bromide, granular, per ounce . . . . .	.09
Acetic Acid, 28 per cent, per 1-pound bottle . . . . .	.35
Citric Acid, 4-ounce bottle . . . . .	.34
Eastman Tested Carbonate of Soda (desiccated), per 1-pound bottle . . . . .	.40
Eastman Tested Sulphite of Soda (desiccated), per 1-pound bottle . . . . .	.45

For Velox preparations, see page 48. For Solio preparations, see page 49.

For Tank Developer Chemicals, see page 41.

## Miscellaneous

Cable Release (except Vest Pocket, see page 60), each . . . . .	\$0.35	Eastman Spotting Colors consist of three colors, black, white and sepia, per set . . . . .	\$0.25
Eastman Special Squeegee, 8-inch . . . . .	.85	Ferrotypes Plate, 10 x 14, light . . . . .	.20
Hard Rubber Stirring Rod . . . . .	.30	Ferrotypes Plate, 10 x 14, heavy . . . . .	.30
Finger Tips, set of 3 . . . . .	.15		
Rubber Focusing Cloth, per yard . . . . .	1.00		

## Terms

**T**HE prices in this catalogue are strictly net, except to regular dealers who carry our goods in stock. THESE PRICES ARE, HOWEVER, SUBJECT TO CHANGE WITHOUT NOTICE. For the convenience of our customers we recommend that they make their purchases from a dealer in photographic goods, as by so doing they can save both time and transportation charges.

EASTMAN KODAK COMPANY, Rochester, N. Y.

## KODAKERY

EVERY new purchaser of a Kodak or Brownie is entitled to a year's *free* subscription to KODAKERY—a generously illustrated, carefully edited photographic publication that will be found not only entertaining but a real help to better pictures.

The manual accompanying the camera contains a subscription blank which should be filled in and sent on to Rochester.

The regular subscription price of KODAKERY is sixty cents a year.



# “KODAK”

Is the registered and common-law Trade Mark of the Eastman Kodak Company and cannot be rightfully applied except to goods of their manufacture. When a dealer tries to sell you under the Kodak name, a camera or films or other goods not of their manufacture, you can be sure that he has an inferior article that he is trying to market on the Kodak reputation.

*If it isn't an Eastman it isn't a Kodak*

THE GUSTAVE FISCHER CO.  
236 ASYLUM ST.  
HARTFORD, CONN.