



M

P

N

A



# KODAK

## **The Digitized Kodak Catalog Project (1886 - 1941): A Very Brief History**

Most camera collectors at some point in their collecting careers pass through a Kodak phase - some never come out of it. And if there ever was one name that came to be associated with both cameras and collecting, it was Kodak.

George Eastman received his first patent (for coating dry plates) and bought his first manufacturing facility in 1880, and in 1881 he started the Eastman Dry Plate Company. In 1886 he received a patent for the near-mythical Eastman Detective Camera, but it wasn't until 1888 that the first camera bearing the name "Kodak" was introduced.

One of the nice things about collecting Kodak is that the product line is pretty well known, and because the company produced annual catalogs for many years, collectors can be reasonably sure of what they're looking at, when it was made, the variations and so on - presuming that they have access to either the appropriate catalog, or a number of the many books which document Kodak, each to some greater or lesser extent.

But what would be really nice would be to have a complete set of Kodak catalogs in an easily accessible form and readily available. And since the advent of portable computing devices (PC, Macintosh, etc.) that's been possible - except for the difficulty of assembling a complete set of Kodak catalogs in one spot and then scanning them and making the results available.

The idea of digitizing a complete set of Kodak catalogs has kicked around the collecting community for many years. It's been proposed on a number of online forums, during meetings of various photohistory groups, and for years there have been many incomplete "Kodak CDs" on eBay but at best, they only contained a few catalogs - whatever the owner had available. But assembling a complete set of catalogs, then scanning and processing perhaps 3,000 to 4,000 pages, was a daunting task - if not completely overwhelming - and nothing ever came of it.

Until now.

In early 2010, the idea came up again, but this time we - "we" as in "the collecting community" - were lucky. A number of collectors were willing to loan their catalogs to this project and a couple of insane - wait, let's call them "dedicated" - dedicated enthusiasts - neither of whom collected Kodak, but both of whom enjoyed the challenge of such a project - were willing to put in the time and effort to scan and pull together the entire set of catalogs into a full-blown Kodak Catalog Digital Library.

Our initial objective was to include just the annual amateur catalogs, but it turns out that many cameras only appear in certain professional and specialty catalogs. We included as many of those as we could obtain so that almost every Kodak camera made in the US, Canada and Europe, would be documented - at least up to about 1941. After that, it becomes much more difficult as Kodak stopped producing annual catalogs as their product line became increasingly more diversified.

However, even with the additional "non-amateur" catalogs, we weren't completely successful in illustrating "every" camera Kodak ever made. There are an elusive few that might appear in specialty catalogs that we simply couldn't track down. If you can't find one of those odd cameras, that's no doubt why. We may do a revision at some point in the future if someone is willing to loan us a catalog that includes a camera that isn't already recorded.

In this project, a total of 67 catalogs were used from 1886 through 1941 including a number of professional and dealer catalogs, and in some years, two or even three different catalogs to cover all the bases. With the cooperation of a number of dedicated collectors, we were able to pull together all those catalogs and in June 2010, the project started in earnest.

By November 2010, we had scanned everything we needed and eventually all 67 catalogs were then reassembled as image folders and converted to the universally accepted PDF format and finally, converted into individually searchable PDFs which could then be searched globally as a collection.

For those of you interested in the statistics: about 200 hours of scanning time (we never want to hear that sound again), 67 catalogs and 3,908 page scans - which generated 7,917 original and processed images - and 11.4 GB of disk space. Additionally, another 100+ hours of technical development time was needed to convert the digital catalogues into a fully searchable "knowledgebase" that could be launched from most any standard web browser.

The overwhelming number of catalogs was loaned to us by that most remarkable of Kodak collectors, Charlie Kamerman of Eagle Creek, Oregon. Without Charlie, it's very doubtful that this project could even have been attempted.

But as it turned out, even Charlie didn't have all the publications that were needed, but he was able to track down the five that he lacked and was able to secure either a copy or high resolution images that we could work with. And so, our thanks to the contributors of the catalogs and scans that we used:

Charlie Kamerman for the vast majority of catalogs used and all his help,  
Steve Shoet for loaning a variety of test catalogs,  
Ryerson University (Toronto) for the 1886 Eastman Catalog  
George Layne for the 1890 New Kodaks Catalog,  
Mike Kessler for the 1891 Dealer Display Catalog,  
Ralph London for the 1893 UK Catalog,  
Michael Pritchard for the 1897 UK Catalog.

The digital side of the project - also known as "all of the work" - was done by Rob Niederman of Medina, Minnesota, and Milan Zahorcak of Tualatin, Oregon. Remarkably we're still friends and in a few years, we'll probably be able to talk about this project rationally.

And there you have it, a more-or-less done deal. We're fairly sure that it isn't quite perfect, and expect there will be some carping about something or other; but all-in-all, we believe this to be a pretty good product and can now move on to something else.

Our thanks to all of those involved.

Rob Niederman  
Milan Zahorcak

Fall, 2011



# KODAKS

*and*

## KODAK SUPPLIES



1923

EASTMAN KODAK COMPANY  
ROCHESTER, N. Y.

*The Kodak City*



FROM A NEGATIVE MADE WITH THE NO. 3A AUTOGRAPHIC KODAK WITH  
KODAK ANASTIGMAT LENS,  $f.7.7$ , AND KODAK PORTRAIT ATTACHMENT

## If it isn't an Eastman, it isn't an Autographic

“How old was Junior when this picture was made?”

Almost invariably a picture of a child provokes such a query. The date is essential to the interest of the print.

With an Autographic Kodak, the date may appear in the negative's margin photographically imprinted there when the picture was made, “Junior, June 6/21.” The whole story is kept for all time.

“Where was that picture made?”

Memory alone tells you that it was one of the snap-shots you made on your motor trip two years ago—or was it three?—and with this degree of definiteness you would be compelled to be content were it not for the autographic record. “Pittsfield, 7/6/20”—and the permanent identity of the picture is secure.

While you may not care to utilize the autographic feature for every exposure, it's there when you want it, and for children and travel pictures it renders a service of unqualified importance.

All the folding Kodaks and Brownies, as you will note in the following pages, are autographic—and autographic film sells at the same price as ordinary film.

Autographic photography is *exclusively Eastman* and essentially worth while.

## “Kodakery”

Every new purchaser of a Kodak or Brownie is entitled to a year's *free* subscription to “Kodakery”—a generously illustrated, carefully edited photographic publication that will be found not only entertaining but a real help to better pictures.

The manual accompanying the camera contains a subscription blank which should be filled in and sent on to Rochester.

The regular subscription price of “Kodakery” is sixty cents a year.

# Vest Pocket Autographic Kodak

(Fixed Focus Model)



VEST POCKET KODAK  
REGULAR

*Actual size of all models  
when closed*

Slip it out, pull it out and press the release. That's picture-making the Vest Pocket Kodak way. These cameras are always in focus, they're small enough to wear as you see in the accompanying illustration, and their optical and mechanical equipment is precisely what might be expected when the largest photographic organization in the world turns its attention to the manufacture of one of the smallest cameras. Bulk has been avoided through brains and, tiny as it is, the Vest Pocket Kodak is a thoroughly practical photographic instrument. It makes pictures  $1\frac{5}{8} \times 2\frac{1}{2}$  inches, and they're good pictures.

The presence of the Autographic feature fits the Vest Pocket Kodak for a photographic note-book—ready to catch and hold the story-telling incidents of everyday life—to keep your diary for you.

It is particularly fitting that such a popular model as the V. P. K. should be offered in a variety of equipments to meet all requirements as to lens, finish and price. Special attention, however, should be directed to the Vest Pocket Autographic Kodak *Special* with the famous, sharp-cutting Kodak Anastigmat



Lens, *f*.7.7, an ideal equipment for a camera of this type. All the Vest Pocket Kodaks are smart in appearance. The Regulars have a stamped metal body; the *Special* is of aluminum construction covered with Morocco grain leather.

### Details

Size of pictures:  $1\frac{1}{8} \times 2\frac{1}{2}$  inches. Size of Kodak:  $1 \times 2\frac{3}{8} \times 4\frac{3}{4}$  inches. Capacity without reloading: 8 exposures. Weight: 11 ounces. Lenses: *Regular*—Fixed focus only; Meniscus Achromatic or Rapid Rectilinear,  $3\frac{1}{2}$ -inch focus. *Special*—Fixed focus model; Kodak Anastigmat, *f*.7.7,  $3\frac{1}{2}$ -inch focus. Kodak Ball Bearing Shutter No. 0 with finger release only (cable release attachment sold separately). Speeds:  $\frac{1}{25}$ ,  $\frac{1}{50}$  second, and time and “bulb” actions. Brilliant finder; reversible for vertical or horizontal pictures. All metal body: *Regular*—Finish, Japan Crystal. *Special*—Covered with Morocco grain leather. Metal parts finished in nickel and black enamel. Black bellows. Autographic feature.

### Prices

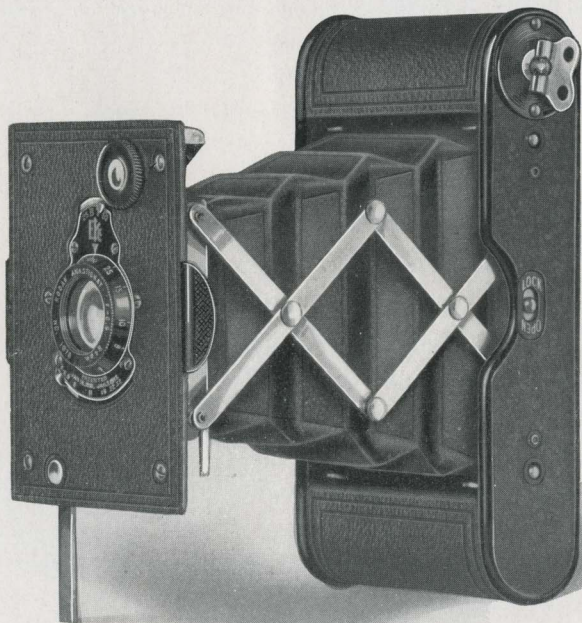
Vest Pocket Autographic Kodak (regular model), Meniscus Achromatic Lens and Kodak Ball Bearing Shutter . . . . .	\$6.50
Ditto, with Rapid Rectilinear Lens, speed U. S. 8 . . . . .	8.00
Vest Pocket Autographic Kodak <i>Special</i> (fixed focus model), Kodak Anastigmat Lens, <i>f</i> .7.7, and Kodak Ball Bearing Shutter . . . . .	12.00
Leather Case for V. P. Kodak . . . . .	.90
Leather Case, with strap . . . . .	1.00
Soft Leather Carrying Bag . . . . .	1.25
Belt Carrying Case (russet leather) . . . . .	1.25
Autographic Film Cartridge, 8 exposures, $1\frac{1}{8} \times 2\frac{1}{2}$ (No. A 127) . . . . .	.25
Vest Pocket Cable Release Attachment (see page 61) . . . . .	.50
Vest Pocket Kodak Tripod Adapter (see page 59) . . . . .	.50
Kodak Portrait Attachment (see page 41) . . . . .	.75
Kodak Self Timer (see page 42) . . . . .	1.25

*The prices of cameras and film include the Excise Tax*

# Vest Pocket Autographic Kodak *Special*

(Focusing Model)

Compactness of construction and flexibility of focus are the two outstanding characteristics of the Vest Pocket Kodak *Special*. It slips in the vest pocket with space to spare, while a turn of the lens flange brings the lens in sharp focus over a wide range of distances—ten in all—from three feet to 100. The camera is always at hand—the focus, at your finger tips.



*If it isn't an Eastman, it isn't a Kodak*

The ability to focus sharply at three feet without the aid of supplementary equipment is a feature that belongs to this Kodak alone. Close-ups, head and shoulder portraits, may be readily secured without a Portrait Attachment, as the accompanying illustration proves.

While the camera's size—or rather lack of it—and its focusing device are important features, the reputation which the Vest Pocket Kodak *Special* enjoys, largely rests on its lens—the sharp-cutting Kodak Anastigmat *f*.6.9—the lens for better pictures.



MADE AT THREE FEET WITH  
REGULAR LENS EQUIPMENT  
(Actual Size)

The camera has an all-metal body covered with Morocco grain leather and is as smart in appearance as it is small in size.

### Details

Size of pictures:  $1\frac{5}{8} \times 2\frac{1}{2}$  inches. Size of Kodak:  $1 \times 2\frac{3}{8} \times 4\frac{3}{4}$  inches. Capacity without reloading: 8 exposures. Weight: 11 ounces. Adjustable focus. Lens: Kodak Anastigmat, *f*.6.9,  $3\frac{1}{2}$ -inch focus. Kodak Ball Bearing Shutter No. 0 with finger release only (cable release attachment sold separately). Speeds:  $\frac{1}{25}$ ,  $\frac{1}{50}$  second, and time and "bulb" actions. Brilliant finder; reversible for vertical or horizontal pictures. All-metal body covered with Morocco grain leather. Metal parts finished in nickel and black enamel. Black bellows. Autographic feature.

### Prices

Vest Pocket Autographic Kodak <i>Special</i> (focusing model), Kodak Anastigmat Lens, <i>f</i> .6.9, and Kodak Ball Bearing Shutter . . . . .	\$18.00
Leather Case for V. P. Kodak . . . . .	.90
Leather Case, with strap . . . . .	1.00
Soft Leather Carrying Bag . . . . .	1.25
Belt Carrying Case (russet leather) . . . . .	1.25
Autographic Film Cartridge, 8 exposures, $1\frac{5}{8} \times 2\frac{1}{2}$ (No. A 127) . . . . .	.25
Vest Pocket Cable Release Attachment (see page 61) . . . . .	.50
Vest Pocket Kodak Tripod Adapter (see page 59) . . . . .	.50
Kodak Self Timer (see page 42) . . . . .	1.25

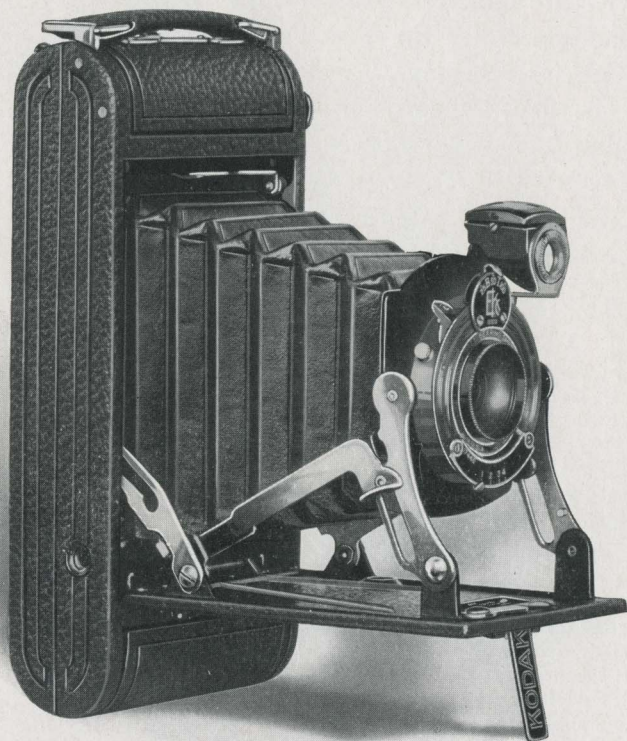
*The prices of cameras and film include the Excise Tax*

# Nos. 1 and 1A Pocket Kodaks

## Series II

(Fixed Focus Models)

Efficiency engineers would appreciate these cameras because of the minimum of motion required to bring them into play. Pull down the camera bed and through the agency of the Self-erecting Front the fixed focus lens automatically springs in position ready for the picture. Seconds are saved that may mean a picture that would otherwise be lost.



*If it isn't an Eastman, it isn't a Kodak*

The cameras are similarly equipped—and well. The lens is carefully tested; the shutter, Kodak Ball Bearing, with adjustable speeds of  $\frac{1}{25}$ ,  $\frac{1}{50}$  and  $\frac{1}{100}$  of a second, is reliable and accurate, and the autographic attachment is countersunk so that the hand may have the flat surface of the camera back as support while the date and title are noted.

The only practical difference between the Nos. 1 and 1A Pocket Kodak, Series II, is in the size of the picture they make,  $2\frac{1}{4} \times 3\frac{1}{4}$  and  $2\frac{1}{2} \times 4\frac{1}{4}$  inches, respectively.

Both are pocket Kodaks and both bring to amateur photography a new convenience in picture-making.

### Details

Size of pictures: No. 1,  $2\frac{1}{4} \times 3\frac{1}{4}$  inches; No. 1A,  $2\frac{1}{2} \times 4\frac{1}{4}$  inches. Size of Kodak: No. 1,  $1\frac{5}{16} \times 3\frac{3}{16} \times 6\frac{7}{16}$  inches; No. 1A,  $1\frac{9}{16} \times 8 \times 3\frac{5}{16}$  inches. Capacity without reloading: No. 1, 6 exposures; No. 1A, 12 exposures. Weight: No. 1, 15 ounces; No. 1A, 23 ounces. Focus: Fixed. Lens: Single Achromatic. Shutter: Kodak Ball Bearing with finger release. Speeds:  $\frac{1}{25}$ ,  $\frac{1}{50}$  and  $\frac{1}{100}$  second as well as time and “bulb” action. Finder: Brilliant, reversible for horizontal or vertical pictures. Body: Aluminum. Covering: No. 1, Levant grain leather; No. 1A, fine seal-grain leather. Metal parts finished in nickel and black enamel. Black bellows. Autographic feature. Two tripod sockets.

### Prices

	No. 1	No. 1A
Pocket Kodak, Series II (fixed focus), with Meniscus Achromatic Lens and Kodak Ball Bearing Shutter . . . . .	\$13.50	\$15.00
Black Sole Leather Case, with strap . . . . .	2.50	3.00
Autographic Film Cartridge, 12 exposures (No. A 116) for No. 1A . . . . .		.60
Ditto, 6 exposures (No. A 120) for No. 1; (No. A 116) for No. 1A . . . . .	.25	.30
Kodak Portrait Attachment (see page 41) . . . . .	.75	.75
Kodak Self Timer (see page 42) . . . . .	1.25	1.25
Cable Release . . . . .	.35	.35

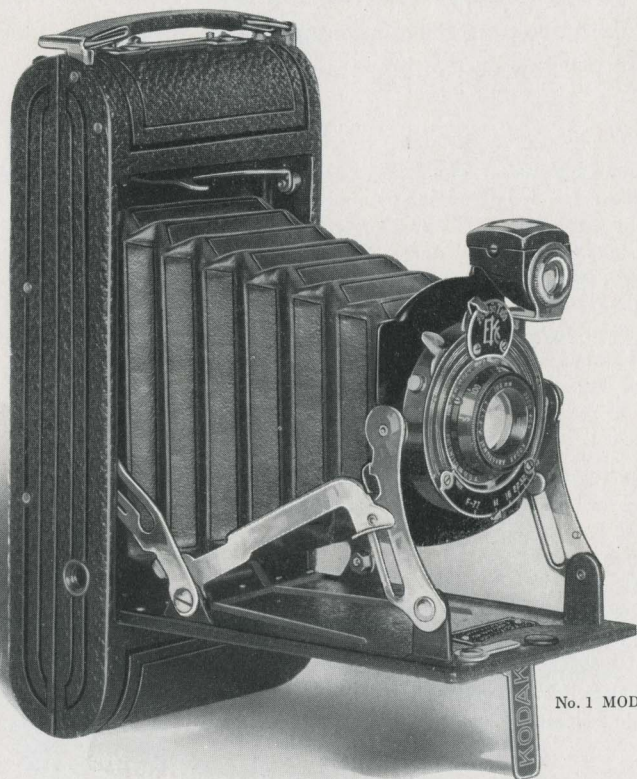
*The prices of cameras and film include the Excise Tax*

# Nos. 1 and 1A Pocket Kodaks

## Series II

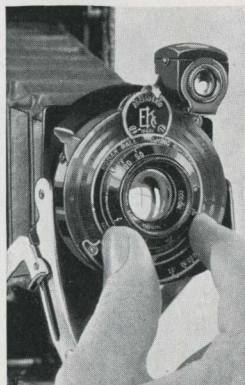
(Focusing Models)

This new model Kodak offered in two sizes—No. 1 for pictures  $2\frac{1}{4} \times 3\frac{1}{4}$  and No. 1A for pictures  $2\frac{1}{2} \times 4\frac{1}{4}$  inches—has three features that immediately stamp it as a thoroughly capable and strikingly distinctive photographic instrument.



No. 1 MODEL

*If it isn't an Eastman, it isn't a Kodak*



FOCUS IS AT YOUR  
FINGER TIPS

Foremost in importance comes the Kodak Anastigmat Lens, *f*.7.7, with Kodak Ball Bearing Shutter speeds of  $\frac{1}{25}$ ,  $\frac{1}{50}$  and  $\frac{1}{100}$  of a second as well as time and "bulb" actions. This famous Eastman-made lens produces sharp, crisp negatives and correspondingly clean-cut prints, whether contact or enlargement.

As runners-up in photographic significance come the Self-erecting Front and the focusing device. The Self-erecting Front springs the lens in picture-making position as the camera bed is dropped, while instead of the familiar distance scale a turn of the lens flange secures accurate focus from near views to infinity.

Autographic, of course.

### Details

Size of pictures: No. 1,  $2\frac{1}{4} \times 3\frac{1}{4}$  inches; No. 1A,  $2\frac{1}{2} \times 4\frac{1}{4}$  inches. Size of Kodak: No. 1,  $1\frac{5}{16} \times 3\frac{1}{16} \times 6\frac{7}{16}$  inches; No. 1A,  $1\frac{9}{16} \times 8 \times 3\frac{5}{16}$  inches. Capacity without reloading: No. 1, 6 exposures; No. 1A, 12 exposures. Weight: No. 1,  $16\frac{1}{2}$  ounces; No. 1A, 26 ounces. Adjustable focus only. Lens: Kodak Anastigmat, *f*.7.7—No. 1,  $4\frac{1}{4}$ -inch focus, No. 1A,  $5\frac{1}{4}$ -inch focus. Kodak Ball Bearing Shutter with finger release. Speeds:  $\frac{1}{25}$ ,  $\frac{1}{50}$  and  $\frac{1}{100}$  second, as well as time and "bulb" action. Finder: Brilliant, reversible for horizontal or vertical pictures. Body: Aluminum. Covering: No. 1, Levant grain leather; No. 1A, fine seal-grain leather. Metal parts finished in nickel and black enamel. Black bellows. Autographic feature. Two tripod sockets.

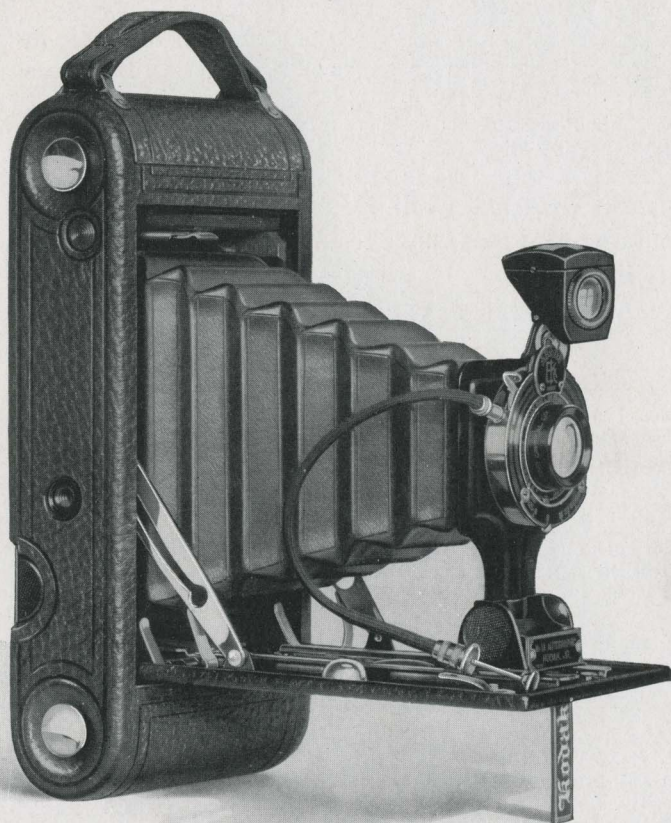
### Prices

	No. 1	No. 1A
Pocket Kodak, Series II (focusing model), with Kodak Anastigmat Lens, <i>f</i> .7.7, and Kodak Ball Bearing Shutter . . . . .	\$20.00	\$22.00
Black Sole Leather Case, with strap . . . . .	2.50	3.00
Autographic Film Cartridge, 12 exposures (No. A 116) for No. 1A . . . . .		.60
Ditto, 6 exposures (No. A 120) for No. 1; (No. A 116) for No. 1A . . . . .	.25	.30
Kodak Portrait Attachment (see page 41) . . . . .	.75	.75
Kodak Self Timer (see page 42) . . . . .	1.25	1.25
Cable Release . . . . .	.35	.35

*The prices of cameras and film include the Excise Tax*

## Nos. 1 and 1A Autographic Kodak Juniors

If you want a camera that is easy to work, easy on the pocket-book and easy in the pocket, the model that you have in your mind is generally a Junior. Justly, the Nos. 1 and 1A Autographic Kodak Juniors are among the most popular cameras of the Kodak line.



*If it isn't an Eastman, it isn't a Kodak*



Both offer the choice of fixed or adjustable focus, both have a reliable shutter with cable release, both are autographic, and finally, both are cleverly designed, handsomely finished and durably constructed.

In addition to the size of the picture they make, these two Juniors differ as follows: No. 1A is a larger camera with larger film capacity and greater focal length than No. 1; No. 1A has three automatic snap-shot speeds except with Ilex Universal Shutter, while No. 1 has two except when equipped with Kodak Anastigmat Lens, *f*.7.7; and No. 1A only is offered with Kodak Anastigmat Lens, *f*.7.7, and Ilex Universal Shutter with seven automatic speeds, 1, 1/2, 1/5, 1/10, 1/25, 1/50 and 1/100 second. This latter equipment will be ready May 15.

### Details

Size of pictures: No. 1, 2 1/4 x 3 1/4 inches; No. 1A, 2 1/2 x 4 1/4 inches. Size of Kodak: No. 1, 1 7/16 x 3 3/8 x 6 7/8 inches; No. 1A, 1 5/8 x 3 3/4 x 8 inches. Capacity: No. 1, 6 exposures; No. 1A, 12 exposures. Weight: No. 1, 21 1/2 ounces; No. 1A, 27 1/2 ounces. Focus: Fixed (with Meniscus Achromatic Lens only); or Adjustable (with any listed lens). Lenses: Meniscus Achromatic; Rapid Rectilinear—No. 1, 4 1/4-inch focus, No. 1A, 5 1/4-inch focus, or Kodak Anastigmat, *f*.7.7—No. 1, 4 1/8-inch focus, No. 1A, 5 1/4-inch focus. Kodak Ball Bearing Shutter with cable and finger release. Speeds: No. 1, 1/25 and 1/50 second, with Kodak Anastigmat, *f*.7.7 Lens, 1/25, 1/50 and 1/100 second; No. 1A, 1/25, 1/50 and 1/100 second. Both with time and "bulb" actions. Ilex Universal Shutter with Kodak Anastigmat, *f*.7.7, on 1A only. Speeds: 1, 1/2, 1/5, 1/10, 1/25, 1/50 and 1/100 second. Brilliant finder; reversible for vertical or horizontal pictures. Body covered with fine seal-grain leather. Tripod sockets. Metal parts finished in nickel and black enamel. Black bellows. Autographic feature.

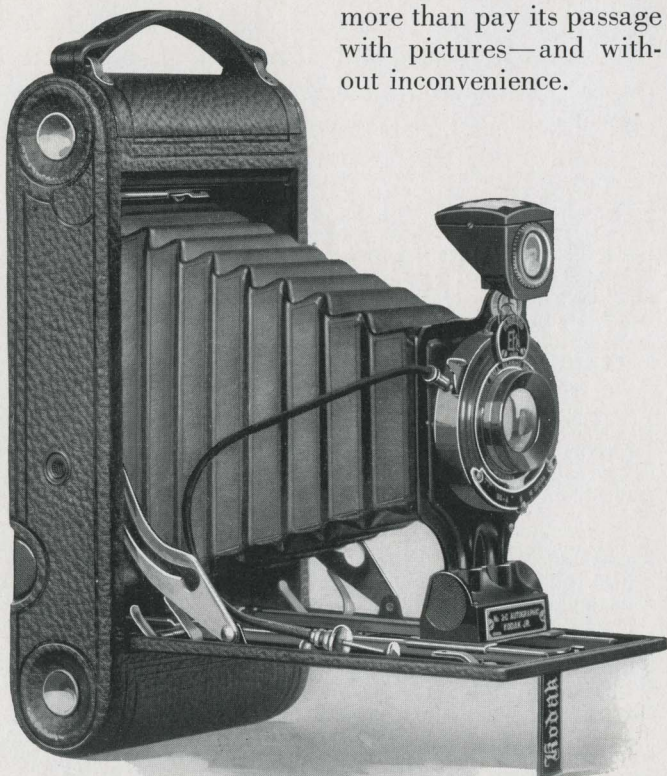
### Prices

	No. 1	No. 1A
Autographic Kodak Junior (fixed focus), Meniscus Achromatic Lens and Kodak Ball Bearing Shutter . . . . .	\$12.00	\$13.00
Autographic Kodak Junior (focusing model, with scale), Meniscus Achromatic Lens and Kodak Ball Bearing Shutter . . . . .	12.00	13.00
With Rapid Rectilinear Lens . . . . .	14.00	15.00
With Kodak Anastigmat Lens, <i>f</i> .7.7 . . . . .	19.00	20.00
With Kodak Anastigmat Lens, <i>f</i> .7.7, and Ilex Universal Shutter . . . . .		24.00
Black Sole Leather Case, with strap . . . . .	3.00	3.00
Soft Leather Bag, with strap . . . . .	1.75	2.00
Autographic Film Cartridge, 12 exposures (No. A 116) for No. 1A . . . . .		.60
Ditto, 6 exposures (No. A 120) for No. 1; (No. A 116) for No. 1A . . . . .	.25	.30
Kodak Portrait Attachment (see page 41) . . . . .	.75	.75
Kodak Self Timer (see page 42) . . . . .	1.25	1.25

*The prices of cameras and film include the Excise Tax*

## Nos. 2C and 3A Autographic Kodak Juniors

Both make generous size pictures—the 3A with a  $3\frac{1}{4} \times 5\frac{1}{2}$ -inch print that has long been standard and the 2C with  $2\frac{7}{8} \times 4\frac{7}{8}$  proportions, a size and shape that fit the view; and neither model presents any difficulty as far as easy carrying is concerned. Dropped in the topcoat pocket, swung smartly from the shoulder in a case or slipped in the side pocket of the car, either camera will more than pay its passage with pictures—and without inconvenience.



*If it isn't an Eastman, it isn't a Kodak*

The picture size and proportions of the 2C or 3A Junior fit them for an amazing variety of subjects—a fact that has long received practical consideration from the tourist. Nor does he forget that the lens and shutter equipment is of such excellence that good picture-making becomes all the easier and that the presence of the autographic feature is of incalculable value to anyone who travels.

The choice of three lenses includes Meniscus Achromatic, Rapid Rectilinear and Kodak Anastigmat, *f*.7.7. All are honestly made and carefully tested but the Anastigmat advantages—sharpness and definition—that come with the Kodak Anastigmat are well worth the small advance in price.

Particular attention is directed to the equipment indicated below, which includes Kodak Anastigmat Lens, *f*.7.7, and Ilex Universal Shutter with seven adjustable speeds, 1 to  $\frac{1}{100}$  second, as well as time and “bulb” actions.

### Details

Size of pictures: No. 2C,  $2\frac{7}{8} \times 4\frac{7}{8}$  inches; No. 3A,  $3\frac{1}{4} \times 5\frac{1}{2}$  inches. Size of Kodak: No. 2C,  $1\frac{3}{4} \times 4\frac{3}{8} \times 8\frac{3}{4}$  inches; No. 3A,  $1\frac{15}{16} \times 5\frac{1}{8} \times 9\frac{3}{4}$  inches. Capacity without reloading: Both, 10 exposures. Weight: No. 2C, 34 ounces; No. 3A, 37 ounces. Adjustable focus only with automatic focusing lock. Lenses: Meniscus Achromatic; Rapid Rectilinear—No. 2C,  $5\frac{1}{2}$ -inch focus; No. 3A,  $6\frac{3}{4}$ -inch focus; or Kodak Anastigmat, *f*.7.7—No. 2C,  $5\frac{1}{2}$ -inch focus; No. 3A,  $6\frac{3}{4}$ -inch focus. Kodak Ball Bearing Shutter with cable and finger release. Speeds:  $\frac{1}{25}$ ,  $\frac{1}{50}$  and  $\frac{1}{100}$  second, and time and “bulb” actions. Ilex Universal Shutter with Anastigmat equipment only. Speeds: 1,  $\frac{1}{2}$ ,  $\frac{1}{5}$ ,  $\frac{1}{10}$ ,  $\frac{1}{25}$ ,  $\frac{1}{50}$  and  $\frac{1}{100}$  second, with time and “bulb.” Brilliant finder, reversible for vertical or horizontal pictures. Back and bed of aluminum, covered with fine seal-grain leather. Metal parts finished in nickel and black enamel. Black bellows. Autographic feature. Two tripod sockets.

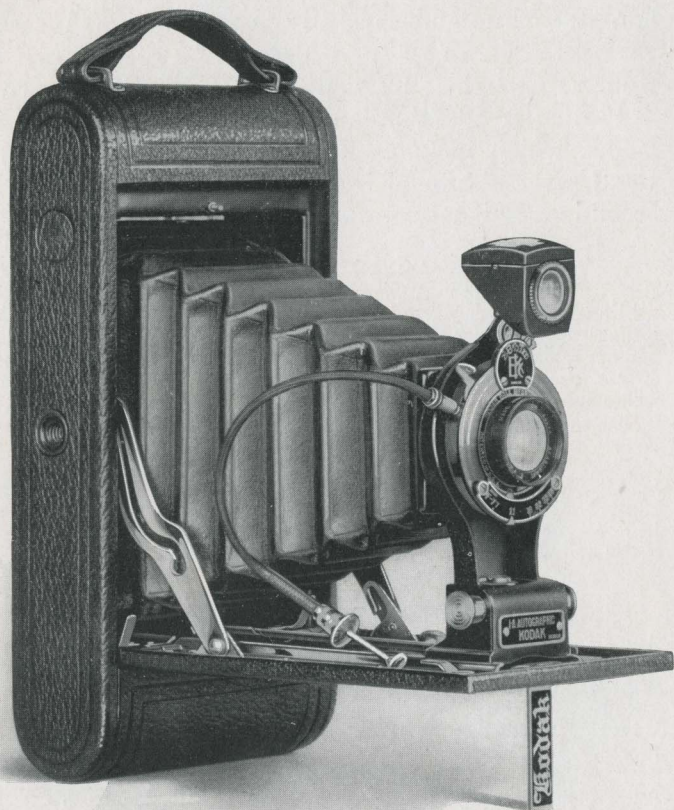
### Prices

	No. 2C	No. 3A
Autographic Kodak Junior, with Meniscus Achromatic Lens and Kodak Ball Bearing Shutter . . . . .	\$16.00	\$17.50
With Rapid Rectilinear Lens . . . . .	18.00	20.00
With Kodak Anastigmat Lens, <i>f</i> .7.7 . . . . .	23.00	25.00
With Kodak Anastigmat Lens, <i>f</i> .7.7, and Ilex Universal Shutter . . . . .	27.00	29.00
Black Sole Leather Case, with strap . . . . .	3.25	3.75
Soft Leather Carrying Bag, with strap . . . . .	2.25	2.50
Autographic Film Cartridge, 10 exposures (No. A 130) for No. 2C; (No. A 122) for No. 3A . . . . .	.75	.90
Ditto, 6 exposures . . . . .	.45	.55
Kodak Portrait Attachment (see page 41) . . . . .	.75	.75
Kodak Self Timer (see page 42) . . . . .	1.25	1.25

*The prices of cameras and film include the Excise Tax*

## No. 1A Autographic Kodak

For the kind of pictures you want to take, the 1A Kodak gives you the kind you want to keep. Its picture proportions,  $2\frac{1}{2} \times 4\frac{1}{4}$ , are a happy medium between vest pocket and post-card size and the excellent lens and shutter equipment is directly responsible for equally excellent photographic results.



*If it isn't an Eastman, it isn't a Kodak*

Although the clean-cut qualities peculiar to exposure with an anastigmat lens can only be secured through anastigmat equipment, Kodak Ball Bearing Shutter, with  $\frac{1}{25}$ ,  $\frac{1}{50}$  and  $\frac{1}{100}$  snap-shot speeds, is a dependable ally for either the tested Rapid Rectilinear Lens or the famous Kodak Anastigmat, *f*.7.7.

As far as operation goes, the 1A Kodak works very simply due to careful construction and clever design and as for appearance, the covering of Levant grain leather is durable as well as smart.

Like the other folding Kodaks, it is autographic—an exclusive Eastman touch. You can—and will—write it on the film at the time.

### Details

Size of pictures:  $2\frac{1}{2} \times 4\frac{1}{4}$  inches. Size of Kodak:  $1\frac{5}{8} \times 3\frac{3}{4} \times 8$  inches. Capacity without reloading: 12 exposures. Weight: 27 ounces. Adjustable focus only, with automatic focusing lock. Lenses: Rapid Rectilinear,  $5\frac{1}{4}$ -inch focus; or Kodak Anastigmat, *f*.7.7,  $5\frac{1}{4}$ -inch focus. Kodak Ball Bearing Shutter with cable and finger release. Speeds:  $\frac{1}{25}$ ,  $\frac{1}{50}$  and  $\frac{1}{100}$  second, and time and “bulb” actions. Brilliant finder; reversible for vertical or horizontal pictures. Back and bed of aluminum, covered with Levant grain leather. Metal parts finished in nickel and black enamel. Black bellows. Autographic feature. Two tripod sockets.

### Prices

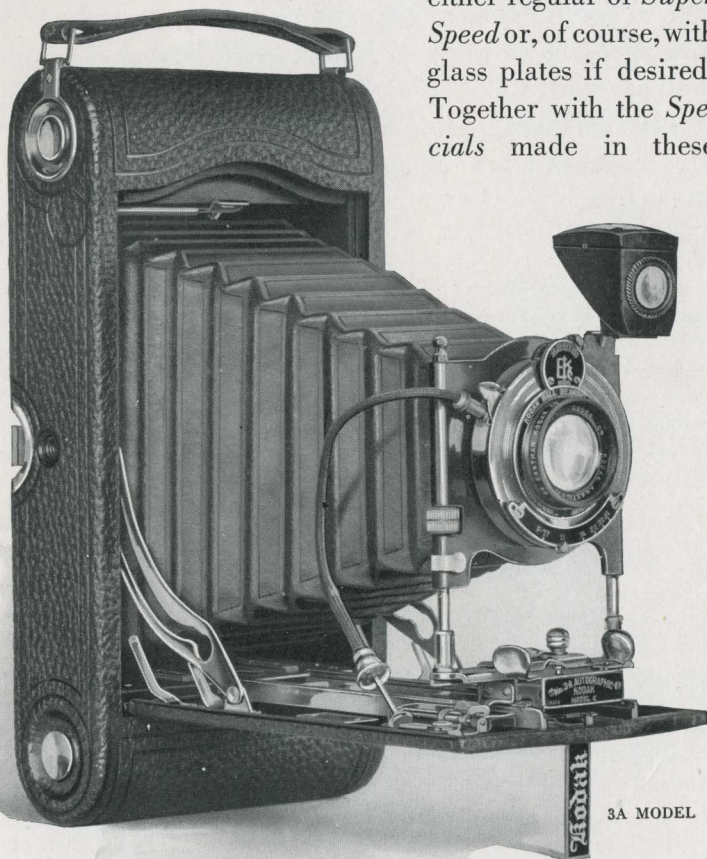
No. 1A Autographic Kodak, with Rapid Rectilinear Lens and Kodak Ball	
Bearing Shutter . . . . .	\$19.00
Ditto, with Kodak Anastigmat Lens, <i>f</i> .7.7 . . . . .	24.00
Black Sole Leather Case, with strap . . . . .	3.00
Soft Leather Carrying Bag, with strap . . . . .	2.00
Autographic Film Cartridge, 12 exposures (No. A 116) . . . . .	.60
Ditto, 6 exposures . . . . .	.30
Kodak Portrait Attachment (see page 41) . . . . .	.75
Kodak Self Timer (see page 42) . . . . .	1.25

*The prices of cameras and film include the Excise Tax*

## Nos. 3 and 3A Autographic Kodaks

Besides excellence of lens and shutter equipment and such unusual camera appointments as the rising front, the fact that neither of these models is limited to the use of roll film gives them unique distinction. By the addition of the Combination Back (see page 52), each may be used with Kodak Cut Film,

either regular or *Super Speed* or, of course, with glass plates if desired. Together with the *Specials* made in these



3A MODEL

*If it isn't an Eastman, it isn't a Kodak*

same sizes, the Nos. 3 and 3A are the only Kodaks that may be so adapted.

Not that either camera cannot speak for itself without the addition of auxiliary equipment. A glance at the details below shows how completely equipped both Kodaks are, and the results prove, how well.

### Details

Size of pictures: No. 3,  $3\frac{1}{4} \times 4\frac{1}{4}$  inches; No. 3A,  $3\frac{1}{4} \times 5\frac{1}{2}$  inches. Size of Kodak: No. 3,  $1\frac{3}{4} \times 4\frac{1}{2} \times 7\frac{1}{2}$  inches; No. 3A,  $2 \times 4\frac{3}{4} \times 9\frac{1}{2}$  inches. Capacity without reloading: No. 3, 12 exposures; No. 3A, 10 exposures. Weight: No. 3, 30 ounces; No. 3A, 41 ounces. Adjustable focus only, with automatic focusing lock. No. 3A has double focusing scale for films or plates. Rising, falling and sliding fronts. Lenses: Rapid Rectilinear, No. 3,  $5\frac{1}{4}$ -inch focus; No. 3A,  $6\frac{1}{2}$ -inch focus; Kodak Anastigmat, *f*7.7, No. 3,  $5\frac{1}{4}$ -inch focus; No. 3A,  $6\frac{3}{4}$ -inch focus. Kodak Ball Bearing Shutter with cable and finger release or on the 3A with anastigmat equipment only, Ilex Universal Shutter with cable and finger release. Speeds: Kodak Ball Bearing Shutter,  $\frac{1}{25}$ ,  $\frac{1}{50}$  and  $\frac{1}{100}$  second, and time and "bulb" actions; Ilex Universal, seven, from  $\frac{1}{100}$  to one second, and time and "bulb" actions. Brilliant finder; reversible for vertical or horizontal pictures. Back and bed of aluminum, covered with fine seal grain leather. Metal parts finished in nickel and black enamel. Black bellows. Autographic feature. Two tripod sockets.

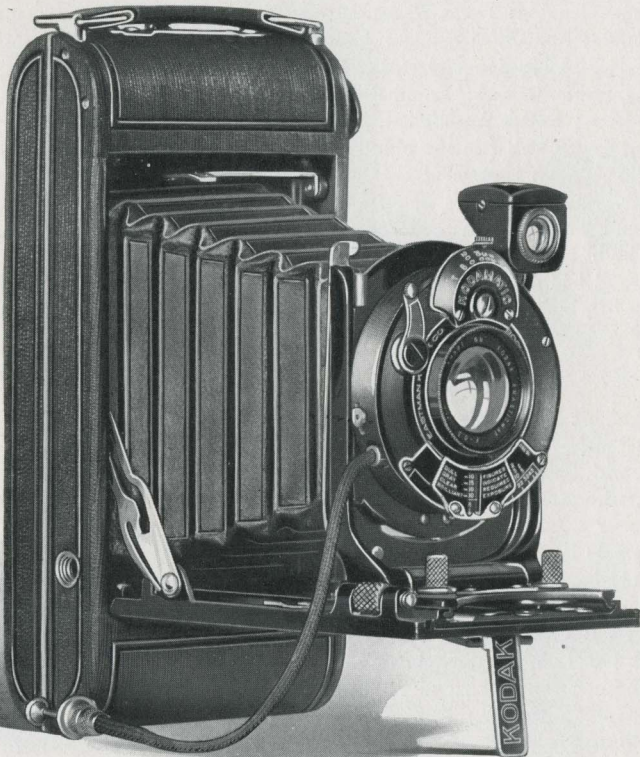
### Prices

Autographic Kodak, Rapid Rectilinear Lens, Kodak Ball Bearing Shutter . . . . .	No. 3	No. 3A
	\$19.00	\$22.50
Ditto, with Kodak Anastigmat Lens, <i>f</i> 7.7 . . . . .	24.00	27.50
Ditto, with Kodak Anastigmat Lens, <i>f</i> 7.7, and Ilex Universal Shutter . . . . .		31.50
Black Sole Leather Case, with strap . . . . .	3.50	4.00
Soft Leather Carrying Bag . . . . .	2.25	2.50
Combination Back for cut film or plates . . . . .	4.00	4.00
Double Glass Plate Holders, each . . . . .	1.50	1.50
Kodak Cut Film Sheaths, each . . . . .	.10	.15
Kodak Cut Film, package of 12 . . . . .	.67	.93
Autographic Film Cartridges, 12 exposures (No. A 118) for No. 3; 10 exposures (No. A 122) for No. 3A . . . . .	.90	.90
Ditto, 6 exposures . . . . .	.45	.55
Kodak Portrait Attachment (see page 41) . . . . .	.75	.75
Kodak Self Timer (see page 42) . . . . .	1.25	1.25

*The prices of cameras and film include the Excise Tax*

# The No. 1 Autographic Kodak *Special*

The wonder of it is that so much photographic proficiency could have been compressed into such small space. The No. 1 *Special* is hardly as large as your hand and yet its equipment includes the high-speed, sharp-cutting Kodak Anastigmat Lens, *f*.6.3, and the Kodamatic Shutter with seven adjustable speeds



*If it isn't an Eastman, it isn't a Kodak*



from  $\frac{1}{200}$  of a second to  $\frac{1}{2}$  second. With such a lens and such a shutter the significance of the name "*Special*" strikes home.

And as for photographic refinements, rising front, counter-sunk autographic attachment and an automatic exposure dial that indicates the speed to use under the light conditions that obtain and with the lens opening used, offer the camerist important assistance in better picture-making.

While satisfying, the No. 1 *Special* picture is not large.

However, the crisp quality that the Kodak Anastigmat, *f*.6.3, puts in the negative is such that large prints may easily be made; and so good are No. 1 *Special* pictures that you will certainly want some of them in a size big enough to top the table or brighten the wall.

In appearance, the No. 1 *Special*, with its smart design and handsome finish in nickel and genuine sealskin, more than satisfies the most exacting taste.

### Details

Size of pictures:  $2\frac{1}{4} \times 3\frac{1}{4}$  inches. Size of Kodak:  $1\frac{5}{16} \times 3\frac{1}{16} \times 6\frac{7}{16}$  inches. Capacity without reloading: 6 exposures. Weight: 18 ounces. Adjustable focus only, with screw focusing device. Lenses: For details, see price list below. Shutter: Kodamatic with cable release. Speeds: seven, from  $\frac{1}{200}$  to  $\frac{1}{2}$  second, with time and "bulb" actions. Brilliant finder; reversible for vertical or horizontal pictures. Aluminum body covered with finest quality genuine sealskin. Metal parts finished in nickel and black enamel. Black leather bellows. Autographic feature. Two tripod sockets.

### Prices

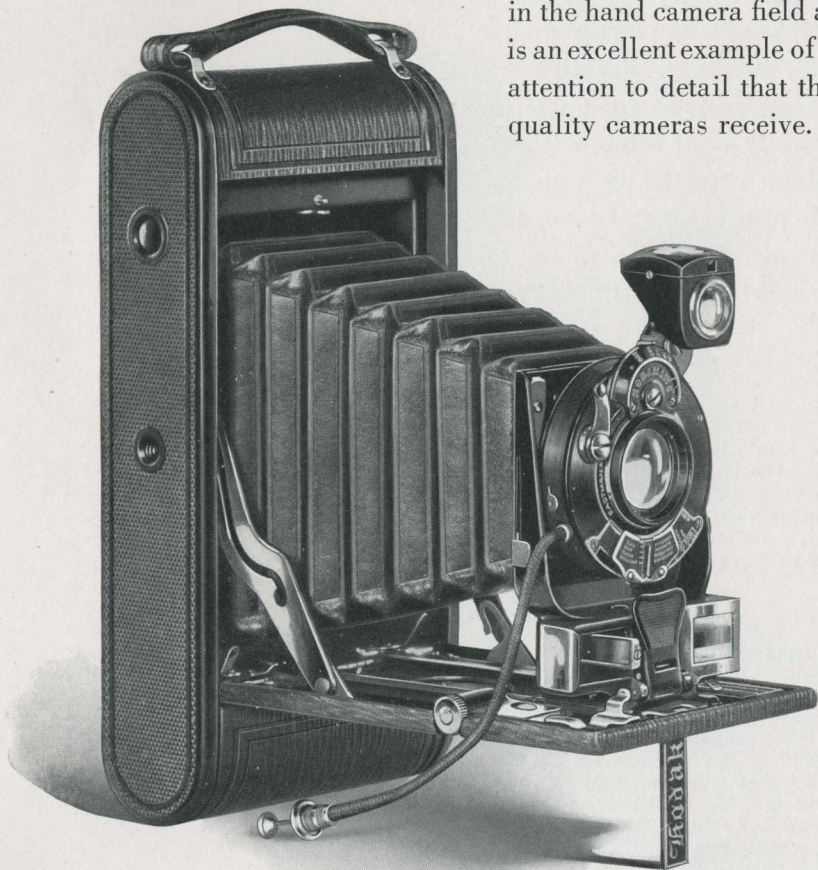
No. 1 Autographic Kodak <i>Special</i> , with Kodak Anastigmat, <i>f</i> .5.3 Lens, $4\frac{1}{2}$ -inch focus, and Kodamatic Shutter . . . . .	\$50.00
No. 1 Autographic Kodak <i>Special</i> , with Bausch & Lomb Kodak Anastigmat, <i>f</i> .6.3 Lens No. 1, $4\frac{1}{2}$ -inch focus, and Kodamatic Shutter . . . . .	62.00
No. 1 Autographic Kodak <i>Special</i> , with Bausch & Lomb Tessar Series IIb, <i>f</i> .6.3 Lens No. 3, $4\frac{1}{2}$ -inch focus, and Kodamatic Shutter . . . . .	74.00
No. 1 Autographic Kodak <i>Special</i> , with Bausch & Lomb Tessar Series Ic, <i>f</i> .4.5 Lens No. 12, $3\frac{1}{2}$ -inch focus, and Kodamatic Shutter . . . . .	71.00
Long-grain Leather, Velvet-lined Case, with strap . . . . .	3.75
Autographic Film Cartridge, 6 exposures (No. A 120) . . . . .	.25
Kodak Portrait Attachment (see page 41) . . . . .	.75
Kodak Self Timer (see page 42) . . . . .	1.25

*The prices of cameras and film include the Excise Tax*

# No. 1A

## Autographic Kodak *Special*

When you own a *Special* you will have at your command as fine a photographic instrument as it is possible to make and there will be prints in your album to prove it. The No. 1A *Special* is splendidly equipped for the entire range of pictures in the hand camera field and is an excellent example of the attention to detail that these quality cameras receive.



*If it isn't an Eastman, it isn't a Kodak*

It is fitted with rising front, and in addition to the usual focusing scale is equipped with the Kodak Range Finder.

As furnished in the regular equipment, it is fitted with the Kodak Anastigmat, *f*.6.3 Lens of 5-inch focus and Kodamatic Shutter—both Eastman-made so as to be in perfect harmony not only with each other but with the instrument itself. With this equipment, the amateur has every anastigmat advantage, definition plus a lens speed that makes possible snap-shots under unfavorable light conditions.

The No. 1A *Special* is also furnished with either the Optimo or the Ilex Acme Shutter and with the Bausch & Lomb Kodak Anastigmat or the Bausch & Lomb Tessar Lens.

### Details

Size of pictures: 2½ x 4¼ inches. Size of Kodak: 1⅝ x 3¾ x 8 inches. Capacity without reloading: 12 exposures. Weight: 34 ounces. Adjustable focus, with Kodak Range Finder and rack and pinion for focusing; also regular focusing scale. Lenses: For details, see price heading below. Kodamatic, Ilex Acme or Optimo Shutter with cable and finger release. Speeds: Kodamatic—Seven, from ½<sub>200</sub> to ½ second; Ilex Acme and Optimo—Eight, from ½<sub>300</sub> to 1 second; all with time and “bulb” actions. Brilliant finder; reversible for vertical or horizontal pictures. Aluminum body covered with finest long-grain calf. Metal parts finished in nickel and black enamel. Black leather bellows. Autographic feature.

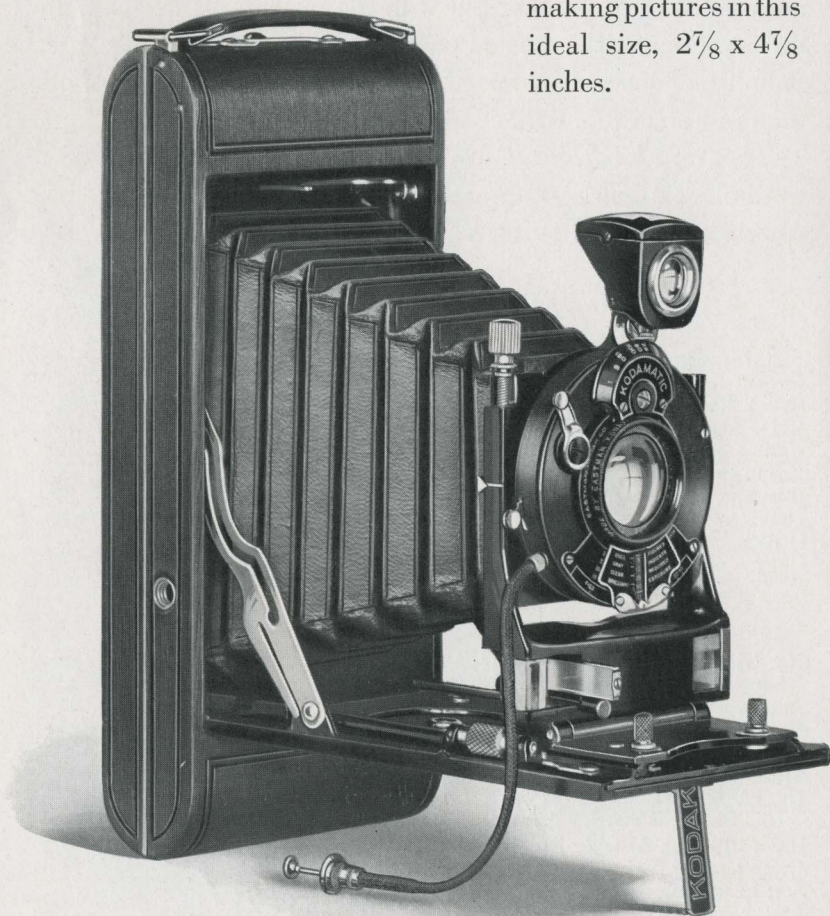
### Prices

No. 1A Autographic Kodak <i>Special</i> , with Kodak Anastigmat, <i>f</i> .6.3 Lens, 5-inch focus, and Kodamatic Shutter . . . . .	\$60.00
Ditto, with Ilex Acme or Optimo Shutter . . . . .	50.00
No. 1A Autographic Kodak <i>Special</i> , with Bausch & Lomb Kodak Anastigmat, <i>f</i> .6.3 Lens No. 2, 5¼-inch focus, and Kodamatic Shutter . . . . .	73.00
Ditto, with Ilex Acme or Optimo Shutter . . . . .	63.00
No. 1A Autographic Kodak <i>Special</i> , with Bausch & Lomb Tessar Series IIb, <i>f</i> .6.3 Lens No. 4, 5¼-inch focus, and Kodamatic Shutter . . . . .	81.00
Ditto, with Ilex Acme or Optimo Shutter . . . . .	71.00
Grain Leather, Velvet-lined Case, with strap . . . . .	4.50
Soft Leather Carrying Bag . . . . .	2.00
Autographic Film Cartridge, 12 exposures (No. A 116) . . . . .	.60
Ditto, 6 exposures . . . . .	.30
Kodak Portrait Attachment (see page 41) . . . . .	.75
Kodak Self Timer (see page 42) . . . . .	1.25

*The prices of cameras and film include the Excise Tax*

# No. 2C Autographic Kodak *Special*

So popular have the 2C proportions become that there has been a growing demand for a camera with superior equipment making pictures in this ideal size,  $2\frac{7}{8}$  x  $4\frac{7}{8}$  inches.



*If it isn't an Eastman, it isn't a Kodak*

And that is the reason for the new Kodak model, the 2C Autographic Kodak *Special*, with Kodak Anastigmat, *f*.6.3, and Kodamatic Shutter. It's the kind of a camera the camerist wants, in a picture size he prefers.

Kodak *Special* means just that—*Special*. The famous Kodak Anastigmat, *f*.6.3, cuts sharp and gives you crisp, brilliant pictures that are a genuine joy, while its speed, approximately 60 per cent over that of the Rapid Rectilinear type, makes pictures possible under unfavorable light conditions—snapshots in the shade, for example. The seven-speed Kodamatic Shutter supplies the mechanical accuracy that such optical excellence deserves. Additional photographic refinements include the Kodak Range Finder that finds the focus, rising front and an automatic exposure plate that gives at a glance the proper shutter speed under the various light conditions and with the various lens openings.

The No. 2C *Special* is made of aluminum and is handsomely covered with finest quality sealskin.

### Details

Size of pictures:  $2\frac{7}{8} \times 4\frac{7}{8}$  inches. Size of Kodak:  $1\frac{9}{16} \times 8\frac{3}{4} \times 3\frac{7}{8}$  inches. Capacity without reloading: 10 exposures. Weight: 32 ounces. Adjustable focus only with screw focusing device. Lens: Kodak Anastigmat, *f*.6.3. Kodamatic Shutter with cable release. Speeds: seven, from  $\frac{1}{150}$  to  $\frac{1}{2}$  second, with time and "bulb" actions. Brilliant finder, reversible for horizontal or vertical pictures. Aluminum body covered with finest quality genuine sealskin. Metal parts finished in nickel and black enamel. Black leather bellows. Autographic feature. Two tripod sockets. Range Finder. Rising and falling front.

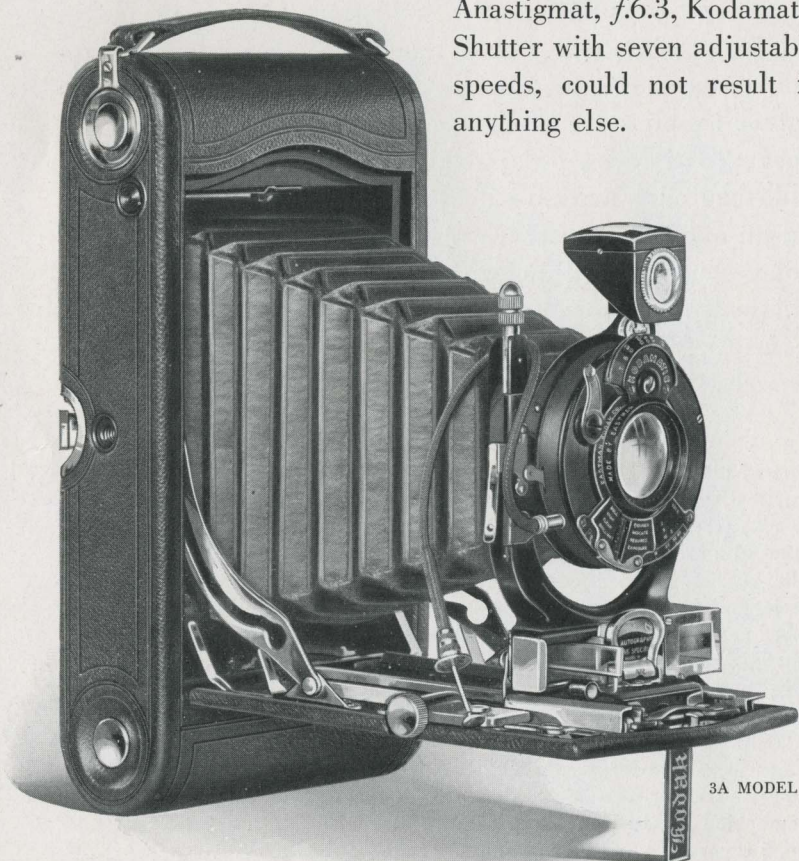
### Prices

No. 2C Autographic Kodak <i>Special</i> , with Kodak Anastigmat Lens, <i>f</i> .6.3, 6-inch focus, and Kodamatic Shutter . . . . .	\$65.00
Long-grain Leather, Velvet-lined Case, with strap . . . . .	5.00
Autographic Film Cartridge, 10 exposures (No. A 130) . . . . .	.75
Ditto, 6 exposures . . . . .	.45
Kodak Portrait Attachment (see page 41) . . . . .	.75
Kodak Self Timer (see page 42) . . . . .	1.25

*The prices of cameras and film include the Excise Tax*

## Nos. 3 and 3A Autographic Kodaks, *Special*

Nos. 3 and 3A *Special* Kodaks are just as good hand cameras in those particular sizes as it is possible to make. That's the significance of "*Special*"—that's what it means. Equipment that includes the fast Kodak Anastigmat, *f*.6.3, Kodamatic Shutter with seven adjustable speeds, could not result in anything else.



*If it isn't an Eastman, it isn't a Kodak*

The 3A *Special* has the Kodak Range Finder, while both, through the addition of the Combination Back (page 52), may be adapted for use with Kodak Cut Film, regular or *Super Speed* or, of course, with plates if desired.

### Details

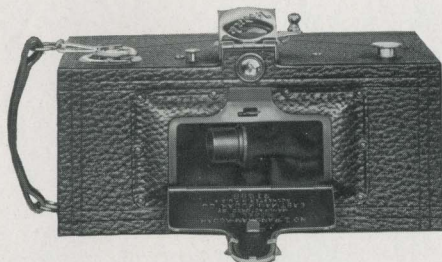
Size of pictures: No. 3,  $3\frac{1}{4} \times 4\frac{1}{4}$  inches; No. 3A,  $3\frac{1}{4} \times 5\frac{1}{2}$  inches. Size of Kodak: No. 3,  $1\frac{7}{8} \times 4\frac{1}{2} \times 8$  inches; No. 3A,  $2 \times 4\frac{3}{4} \times 9\frac{1}{2}$  inches. Capacity without reloading: No. 3, 12 exposures; No. 3A, 10 exposures. Weight: No. 3, 32 ounces; No. 3A, 42 ounces. Adjustable focus, with rack and pinion for focusing, also regular focusing scale; No. 3 also equipped with spirit level; No. 3A, with Kodak Range Finder. Rising and falling front. Lenses: For details, see price heading below. Kodamatic, Ilex Acme or Optimo Shutter with cable and finger release. Speeds: Kodamatic—seven speeds, No. 3, from  $\frac{1}{200}$  to  $\frac{1}{2}$  second; No. 3A,  $\frac{1}{150}$  to  $\frac{1}{2}$  second. Brilliant finder. Aluminum body covered with genuine Persian Morocco. Metal parts finished in nickel and black enamel. Black leather bellows. Autographic feature. Two tripod sockets.

### Prices

Autographic Kodak <i>Special</i> , with Kodak Anastigmat, <i>f</i> 6.3 Lens, 5-inch focus on No. 3; $6\frac{3}{4}$ -inch focus on No. 3A; and Kodamatic Shutter . . . . .	No. 3	No. 3A
	\$55.00	\$70.00
Ditto, with Ilex Acme or Optimo Shutter . . . . .	45.00	60.00
Autographic Kodak <i>Special</i> , with Bausch & Lomb Kodak Anastigmat, <i>f</i> 6.3 Lens No. 2— $5\frac{1}{4}$ -inch focus on No. 3; Lens No. 4— $6\frac{3}{4}$ -inch focus on No. 3A; and Kodamatic Shutter . . . . .	70.00	90.00
Ditto, with Ilex Acme or Optimo Shutter . . . . .	60.00	80.00
Autographic Kodak <i>Special</i> , with Bausch & Lomb Tessar Series IIb Anastigmat, <i>f</i> 6.3 Lens No. 4— $5\frac{1}{4}$ -inch focus on No. 3; Lens No. 5K— $7\frac{1}{4}$ -inch focus on No. 3A; and Koda- matic Shutter . . . . .	80.00	100.00
Ditto, with Ilex Acme or Optimo Shutter . . . . .	70.00	90.00
Grain Leather, Velvet-lined Case, with strap . . . . .	4.75	5.25
Soft Leather Carrying Bag . . . . .	2.25	2.50
Combination Back for cut film or plates . . . . .	4.50	5.00
Double Glass Plate Holders, each . . . . .	1.50	1.50
Kodak Cut Film Sheaths, each . . . . .	.10	.15
Kodak Cut Film, package of 12 . . . . .	.67	.93
Autographic Film Cartridge, 12 exposures (No. A 118) for No. 3; 10 exposures (No. A 122) for No. 3A . . . . .	.90	.90
Ditto, 6 exposures . . . . .	.45	.55
Kodak Portrait Attachment (see page 41) . . . . .	.75	.75
Kodak Self Timer (see page 42) . . . . .	1.25	1.25

*The prices of cameras and film include the Excise Tax*

## No. 4 Panoram Kodak



As the lens swings in an arc it includes a large group or a wide stretch of landscape with a single exposure. The result is a long narrow picture that is not only different but distinctly effective.

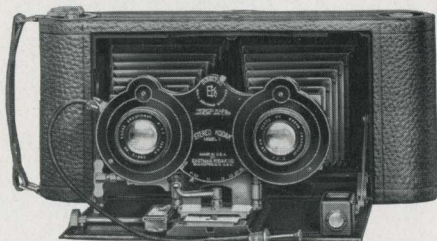
For pictures  $3\frac{1}{2} \times 12$  inches. Capacity without reloading: 4 exposures. Size:  $4\frac{3}{4} \times 5\frac{5}{8} \times 10\frac{1}{8}$  inches. Weight: 45 ounces. Two tripod sockets. Brilliant finder with hood.

### Prices

Panoram Kodak . . . . .	\$30.00
Black Sole Leather Carrying Case, with shoulder strap . . . . .	9.00
N. C. Film Cartridge; No. 4, 4 exposures, $3\frac{1}{2} \times 12$ inches (No. 103) . . . . .	.90

## The Stereo Kodak

You are used to pictures of two dimensions only—length and breadth. Stereo prints through a stereoscope have depth as well, with a resultant realness that is almost startling.



Size of pictures:  $3\frac{1}{8} \times 3\frac{3}{16}$  inches. Size of Kodak:  $2\frac{3}{16} \times 4\frac{3}{4} \times 10\frac{1}{2}$  inches. Capacity: 6 exposures. Weight: 48 ounces. Rising front. Adjustable focus. Lenses: Kodak Anastigmat,  $f7.7$ ,  $5\frac{1}{4}$ -inch focus. Speeds:  $\frac{1}{25}$ ,  $\frac{1}{50}$  and  $\frac{1}{100}$  second, and time and "bulb" actions. View finder. Aluminum body covered with seal-grain leather. Metal parts finished in nickel and black enamel. Black bellows. One tripod socket.

### Prices

Stereo Kodak, Model No. 1, Kodak Anastigmat Lenses, $f7.7$ , and Stereo Ball Bearing Shutter . . . . .	\$50.00
Black Sole Leather Carrying Case, with strap . . . . .	4.50
N. C. Film Cartridge (No. 101), 6 exposures, for Stereo . . . . .	.70
Ditto, 3 exposures, for Stereo . . . . .	.35
Stereo Kodak Self-transposing Printing Frame . . . . .	4 50

*The prices of cameras and film include the Excise Tax*



## About the Brownies

Picture-making in its most simplified form can be readily reached over the Brownie route. Kodak took the bother out of photography years ago, and has kept it out ever since; but because less is expected of it, as far as range is concerned, the Brownie can and does go even farther in reducing picture-making to its simplest terms.

This is emphatically true of the box-type Brownie which offers the easiest possible means of making pictures. The photographic experience is inside the box with the result that about all the user has to do is to point the lens and press the release. Box Brownies are excellent cameras for the children, and as the resulting pictures are amazingly good, these instruments offer striking proof that photography is one sport that you and the youngsters can enjoy together. Then too, pictures of the children by the children have a charm that only comes with ingenuous youth. You'll want duplicate prints of many a juvenile masterpiece for your own album.

The Autographic Brownies have much in common with the Kodaks—the autographic feature, for example—but distinctive Brownie characteristics are retained. Like the box Brownies, the folding models provide an easy means of making pictures, with the greater range that added equipment naturally gives.

Economical in price, simple in operation and thoroughly capable, these cousins of the Kodaks exhibit their relationship in results.

They make good because they make good pictures.

The pages that follow give you interesting details of the various models. Your Kodak dealer, of course, has the cameras themselves in stock.

## Nos. 0 and 2 Brownies

Eastman-made in Kodak factories, the box Brownie, for all its simplicity of operation, is a thoroughly capable camera. Because it's so easy to use, however, it's just the thing for the youngster—just the thing for anyone, in fact, who wants good pictures, the easiest way at the smallest cost.



No. 2 MODEL

### Details

Size of pictures: No. 0, 1 $\frac{5}{8}$  x 2 $\frac{1}{2}$  inches; No. 2, 2 $\frac{1}{4}$  x 3 $\frac{1}{4}$  inches. Size of camera: No. 0, 2 $\frac{5}{8}$  x 3 $\frac{3}{8}$  x 4 $\frac{1}{8}$  inches; No. 2, 3 $\frac{1}{4}$  x 4 x 5 $\frac{5}{8}$  inches. Capacity: No. 0, 8 exposures; No. 2, 6 exposures. Weight: No. 0, 8 ounces; No. 2, 15 $\frac{1}{2}$  ounces. Fixed focus. Lens: Meniscus Eastman Rotary Shutter: No. 0, one stop, also time action; No. 2, three stops and time action. Two ground-glass finders for vertical and horizontal pictures. Body covered with imitation leather.

### Prices

	No. 0	No. 2
Brownie Camera, Meniscus Lens, Eastman Rotary Shutter . . .	\$2.00	\$2.50
Brownie Carrying Case, for No. 0 . . . . .	1.00	
Brownie Carrying Case, with strap, for No. 2 . . . . .		1.25
N. C. Film Cartridge, 8 exposures (No. 127), for No. 0 . . . . .	.25	
Ditto, 6 exposures (No. 120), for No. 2 . . . . .		.25
Brownie Tripod Adapter (see page 60) . . . . .	.25	.25
Kodak Portrait Attachment (see page 41) . . . . .	.75	.75
Developing and Printing Outfit (see page 44) . . . . .		2.00

*The prices of cameras and film include the Excise Tax*

## No. 2A Brownie

With the photographic experience inside the box, about everything outside, street scenes, views, portraits and the like, are yours for the taking. The subject is always in focus. Just point the lens and press the release. Nothing could be simpler.

The picture proportions of the 2A Brownie— $2\frac{1}{2} \times 4\frac{1}{4}$  inches—are an unusually popular size—and justly so.

### Details

Size of pictures:  $2\frac{1}{2} \times 4\frac{1}{4}$  inches. Size of camera:  $3\frac{7}{16} \times 5\frac{1}{8} \times 6\frac{1}{8}$  inches. Capacity without reloading: 12 exposures. Weight:  $19\frac{1}{2}$  ounces. Fixed focus only. Lens: Meniscus Achromatic. Eastman Rotary Shutter, with three stops and time action. Two ground-glass finders for vertical and horizontal pictures. Body covered with imitation leather. Metal parts finished in nickel and black enamel.



### Prices

No. 2A Brownie Camera, Meniscus Achromatic Lens, Eastman Rotary Shutter . . . . .	\$3.50
Brownie Carrying Case, with strap . . . . .	1.50
N. C. Film Cartridge, 12 exposures (No. 116) . . . . .	.60
Ditto, 6 exposures . . . . .	.30
Kodak Portrait Attachment (see page 41) . . . . .	.75
Brownie Tripod Adapter (see page 60) . . . . .	.25
Developing and Printing Outfit (see page 44) . . . . .	2.00

*The prices of cameras and film include the Excise Tax*

# Nos. 3 and 2C Brownies

Inexpensive as these Brownies are, their equipment includes carefully tested lens and Eastman Rotary Shutter so that they offer in a thoroughly practical form the easiest means to good pictures. Naturally the children like the Brownie—and the resulting pictures please parents, as well.

## Details

Size of pictures: No. 3, 3¼x4¼ inches; No. 2C, 2⅞ x 4⅞ inches. Size of camera: No. 3, 4⅜ x 5⅛ x 6⅞ inches; No. 2C, 3⅞x6¼x7¼ inches. Capacity without re-loading: No. 3, 12 exposures; No. 2C, 10 exposures. Weight: No. 3, 25 ounces; No. 2C, 28 ounces. Fixed focus only. Lens: Meniscus Achromatic. Eastman Rotary Shutter, with three stops and time action. Two ground-glass finders for vertical and horizontal pictures. Wood body with imitation leather. Two tripod sockets.



No. 3 MODEL

## Prices

	No. 3	No. 2C
Brownie Camera with Meniscus Achromatic Lens and Eastman Rotary Shutter . . . . .	\$4.50	\$5.00
Brownie Carrying Case, with strap . . . . .	1.60	1.60
N. C. Film Cartridge, 10 exposures (No. 130), for No. 2C. . . . .		.75
Ditto, 6 exposures . . . . .		.45
Ditto, 12 exposures (No. 124), for No. 3 . . . . .	.90	
Ditto, 6 exposures . . . . .	.45	
Kodak Portrait Attachment (see page 41) . . . . .	.75	.75
Developing and Printing Outfit (see page 44) . . . . .	2.00	2.00

*The prices of cameras and film include the Excise Tax*

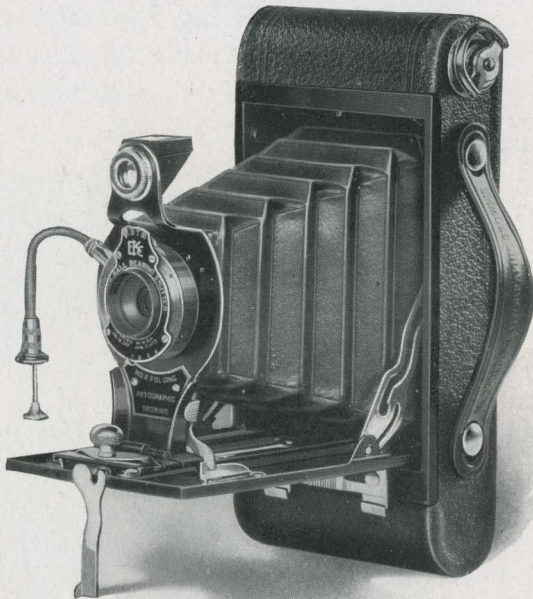
# No. 2 Folding Autographic Brownie

They fold like Kodaks and have the autographic feature, the exclusive Eastman touch.

Add to this, dependable lens and shutter equipment and emphatic ease of camera operation and you have any Autographic Brownie, the No. 2, for example.

## Details

Size of pictures:  $2\frac{1}{4} \times 3\frac{1}{4}$  inches. Size of camera:  $1\frac{1}{4} \times 3\frac{1}{8} \times 6\frac{1}{2}$  inches. Capacity without reloading: 6 exposures. Weight: 19 ounces. Adjustable focus with automatic focusing lock. Lenses: Meniscus Achromatic; or Rapid Rectilinear,  $3\frac{3}{4}$ -inch focus. Kodak Ball Bearing Shutter, with cable and finger release. Speeds:  $\frac{1}{25}$  and  $\frac{1}{50}$  second, with time and "bulb" actions. Ground-glass finders; reversible for vertical and horizontal pictures. Metal body covered with durable imitation leather. Metal parts finished in nickel and black enamel. Black bellows. Autographic feature. Two tripod sockets.



## Prices

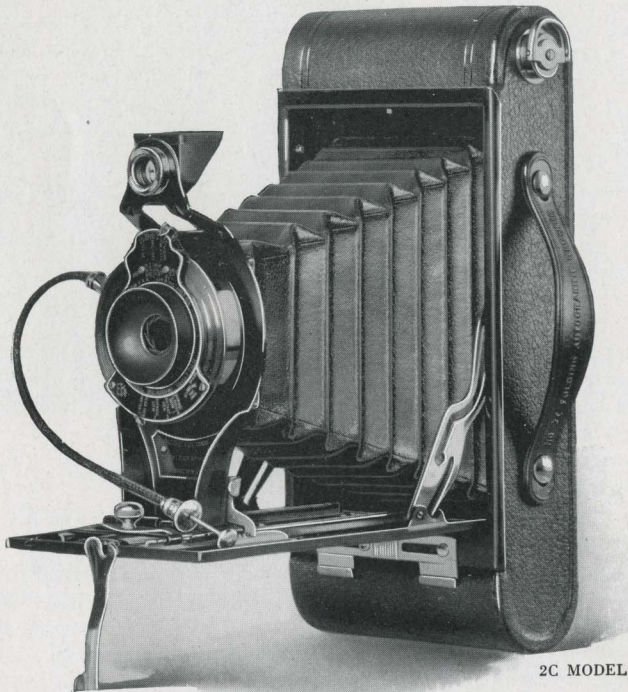
No. 2 Folding Autographic Brownie, Meniscus Achromatic Lens and Kodak Ball Bearing Shutter . . . . .	\$9.00
Ditto, with Rapid Rectilinear Lens . . . . .	11.00
Carrying Case for No. 2 Folding Autographic Brownie, with strap . . . . .	1.50
Autographic Film Cartridge, 6 exposures (No. A 120) . . . . .	.25
Kodak Portrait Attachment (see page 41) . . . . .	.75
Kodak Self Timer (see page 42) . . . . .	1.25

*The prices of cameras and film include the Excise Tax*

## Nos. 2A and 2C Folding Autographic Brownies

When you look at one of these cameras at your Kodak dealer's you will be impressed at once with their common-sense characteristics. They're substantially built to pocket size, they're easily worked and they're properly priced.

Despite their simplicity, however, and their common-sense characteristics, it must not be forgotten that Eastman-designed and Eastman-made as they are, these Folding Brownies are



*Eastman-designed and Eastman-made*

efficient photographic instruments and are built to conform to the rigid Eastman standard.

The Nos. 2A and 2C Folding Brownies differ chiefly in the size of picture taken. The No. 2A makes  $2\frac{1}{2} \times 4\frac{1}{4}$ -inch, while the No. 2C makes  $2\frac{7}{8} \times 4\frac{7}{8}$ -inch pictures.

Both have the Kodak Ball Bearing Shutter with speeds up to  $\frac{1}{100}$  of a second.

Both are made of metal, attractively covered with fine imitation leather and are in every sense satisfactory picture-makers.

### Details

Size of pictures: No. 2A,  $2\frac{1}{2} \times 4\frac{1}{4}$  inches; No. 2C,  $2\frac{7}{8} \times 4\frac{7}{8}$  inches. Size of camera: No. 2A,  $1\frac{7}{16} \times 3\frac{3}{8} \times 7\frac{7}{8}$  inches; No. 2C,  $1\frac{3}{4} \times 3\frac{3}{4} \times 8\frac{11}{16}$  inches. Capacity without reloading: No. 2A, 12 exposures; No. 2C, 10 exposures. Weight: No. 2A, 25½ ounces; No. 2C, 27 ounces. Adjustable focus, with automatic focusing lock. Lenses: Meniscus Achromatic; or Rapid Rectilinear—No. 2A, 5-inch focus; No. 2C, 5½-inch focus. Kodak Ball Bearing Shutter with cable and finger release. Speeds:  $\frac{1}{25}$ ,  $\frac{1}{50}$  and  $\frac{1}{100}$  second, with time and "bulb" actions. Ground-glass finders; reversible for vertical and horizontal pictures. Metal body covered with durable imitation leather. Metal parts finished in nickel and black enamel. Black bellows. Autographic feature. Two tripod sockets.

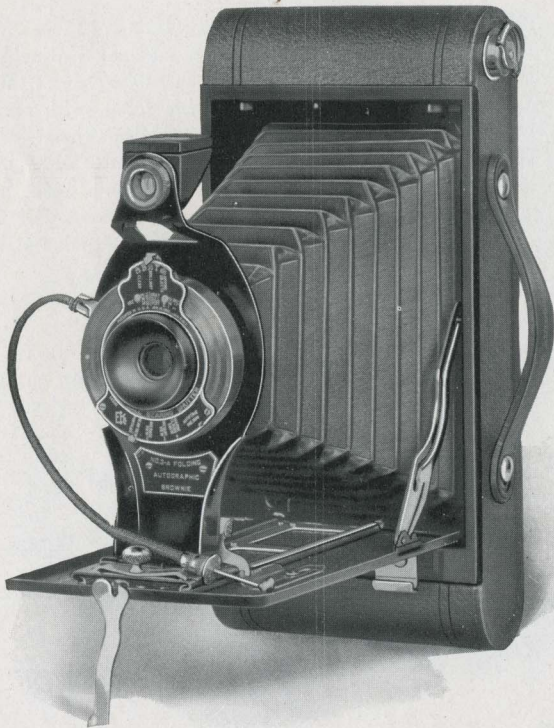
### Prices

	No. 2A	No. 2C
Folding Autographic Brownies with Meniscus Achromatic		
Lenses and Kodak Ball Bearing Shutters . . . . .	\$10.00	\$13.00
Ditto, with Rapid Rectilinear Lenses . . . . .	12.00	15.00
Carrying Case for Folding Autographic Brownies, with strap . . . . .	1.60	1.70
Autographic Film Cartridges, 12 exposures (No. A 116) for No. 2A; 10 exposures (No. A 130) for No. 2C . . . . .	.60	.75
Ditto, 6 exposures . . . . .	.30	.45
Kodak Portrait Attachment (see page 41) . . . . .	.75	.75
Kodak Self Timer (see page 42) . . . . .	1.25	1.25

*The prices of cameras and film include the Excise Tax*

## No. 3A Folding Autographic Brownie

A sensible sort of a camera is the 3A Brownie, nothing freakish, no superficial photographic pretensions of any kind, just practical, dependable equipment for general amateur work. It is an honestly built instrument with an equally honest purpose—good pictures in a large size,  $3\frac{1}{4} \times 5\frac{1}{2}$  inches, with the greatest possible ease.



*Eastman-designed and Eastman-made*



The carefully tested lens and Kodak Ball Bearing Shutter have snap-shot speeds of  $\frac{1}{25}$ ,  $\frac{1}{50}$  and  $\frac{1}{100}$  of a second, as well as time and "bulb" actions, while the presence of the autographic feature is proof positive that the camera is Eastman-made and Eastman-designed.

The 3A Brownie is substantially constructed of metal, covered with durable imitation leather and the metal appointments are finished in nickel and black enamel.

Its neat, business-like appearance inspires confidence which experience will prove entirely justified.

### Details

Size of pictures:  $3\frac{1}{4} \times 5\frac{1}{2}$  inches. Size of camera:  $11\frac{1}{16} \times 4\frac{5}{16} \times 9\frac{5}{16}$  inches. Capacity without reloading: 10 exposures. Weight: 32 ounces. Adjustable focus, with automatic focusing lock. Lenses: Meniscus Achromatic; Rapid Rectilinear,  $6\frac{1}{4}$ -inch focus. Kodak Ball Bearing Shutter with cable and finger release. Speeds:  $\frac{1}{25}$ ,  $\frac{1}{50}$  and  $\frac{1}{100}$  second, and time and "bulb" actions. Ground-glass finders; reversible for vertical and horizontal pictures. Metal body covered with durable imitation leather. Metal parts finished in nickel and black enamel. Black bellows. Autographic feature. Two tripod sockets.

### Prices

No. 3A Folding Autographic Brownie, Meniscus Achromatic Lens and Kodak Ball Bearing Shutter . . . . .	\$14.50
Ditto, with Rapid Rectilinear Lens . . . . .	17.00
Carrying Case for No. 3A Folding Autographic Brownie, with strap . . . . .	1.80
Autographic Film Cartridge, 10 exposures (No. A 122) . . . . .	.90
Ditto, 6 exposures . . . . .	.55
Kodak Portrait Attachment (see page 41) . . . . .	.75
Kodak Self Timer (see page 42) . . . . .	1.25

*The prices of cameras and film include the Excise Tax*

## Kodak Ball Bearing Shutter

A thoroughly reliable shutter whose operation is smooth and even, due to ball bearing construction, and whose speeds meet every requirement of the lenses with which it is listed.



There are three models, differing in size and speed. All have, in addition to the snapshot *speeds*, both “bulb” and time actions.

Shutter No. 0, with speeds of  $\frac{1}{25}$  and  $\frac{1}{50}$  of a second, is fitted to the Vest Pocket Kodaks, Regular and *Special*, fixed focus and focusing models; No. 2 Folding Brownie; and No. 1 Kodak Junior, with single or R. R. lens.

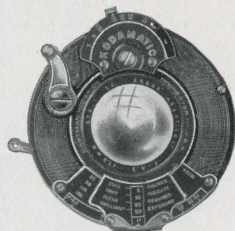
Shutter No. 1, with speeds of  $\frac{1}{25}$ ,  $\frac{1}{50}$  and  $\frac{1}{100}$  of a second, is fitted to both the fixed focus and focusing models of No. 1 Pocket Kodak, Series II; No. 1 Kodak Junior, with  $f7.7$  lens; No. 1A Kodak Junior; No. 1A Kodak; No. 3 Kodak and No. 2A Folding Brownie.

Shutter No. 2, with speeds of  $\frac{1}{25}$ ,  $\frac{1}{50}$  and  $\frac{1}{100}$  of a second is fitted to No. 1A Pocket Kodak, Series II, both fixed focus and focusing models; No. 2C Kodak Junior; No. 3A Kodak Junior; No. 3A Kodak and Nos. 2C and 3A Folding Brownies.

## The Kodamatic Shutter

The Kodamatic Shutter splits seconds with an accuracy that has no precedent as far as amateur photography is concerned. It brings a new accuracy, a new dependability to exposure-making. The amateur is sure of his speeds—and better pictures are the logical outcome.

The Kodamatic Shutter has seven speeds,  $\frac{1}{200}$  ( $\frac{1}{150}$  on 2C and 3A),  $\frac{1}{100}$ ,  $\frac{1}{50}$ ,  $\frac{1}{25}$ ,  $\frac{1}{10}$ ,  $\frac{1}{5}$  and  $\frac{1}{2}$ , as well as time and “bulb” action and with these speeds at his disposal, the amateur is equipped for virtually any picture in the hand camera field.



A feature of the utmost value in getting correct exposures is a sliding scale, attached to the “stop” indicator plate, which shows which speed to use for each stop opening under four different lighting conditions—dull, gray, clear or brilliant.

The Kodamatic is furnished only with the *Special* Kodaks.

# The KODAK ANASTIGMATS

*f.7.7 f.6.3 and f.4.5*

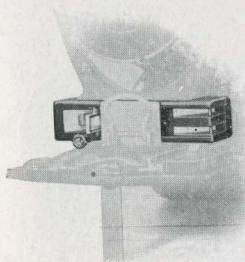
There was a time when anastigmat lenses could only be fashioned slowly and painstakingly through the hand work of master craftsmen. The result was an excellent product, but a small output, and a price that, for amateurs, was prohibitive.

And then came the Eastman-made Kodak Anastigmat. For the first time anastigmat advantages were placed at the disposal of the hundreds of thousands of amateurs who had hitherto felt that they could not afford a lens of the finest quality. Scientific production kept the quality up and brought the price down.

Kodak Anastigmat, *f.7.7*, offers little more speed but its sharp-cutting quality means sharp pictures—both contact and enlargement. Kodak Anastigmat, *f.6.3*, offers, besides sharpness, a speed 60 per cent faster than a lens of the Rapid Rectilinear type and consequently the means for successful snap-shots when ordinary equipment would fail. Either, at its indicated speed, is *at least* the equal in depth, sharpness and flatness of field of any anastigmat made, regardless of price.

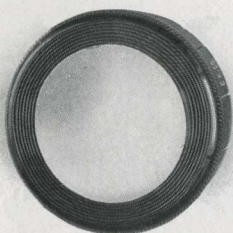
## The Kodak Range Finder

The Kodak Range Finder finds the focus for you. Select some horizontal line near the center of the subject, and rack the lens back and forth until this line is continuous in the three mirrors as glimpsed through the Range Finder. *When the line is continuous, the focus is correct.* That's all there is to it. The Kodak Range Finder is fitted to the 1A, 2C and 3A *Specials* only.



# Kodak Portrait Attachment

Just as the close-ups on the screen are often the most effective scenes in the photoplay, so the close-ups, made possible through the Kodak Portrait Attachment, frequently become the prize prints of the album.



And it's all very simple. The attachment is merely an extra lens that slips on over the regular lens equipment and, without altering the exposure or changing the operation of the Kodak in any way, brings the subject in sharp focus at close range.

While Kodak portraits, such as you find as the frontispiece to this book, offer obvious possibilities, the Kodak Portrait Attachment may be used as well for photographing flowers or similar subjects.

## Kodak Diffusion Portrait Attachment

This little lens is similar to the Kodak Portrait Attachment except that instead of a sharp image the focus is diffused and the lines in the picture pleasingly soft in consequence. The effect is easily obtained and is very interesting pictorially.

Except for the V. P. K. Diffusion Disc used with the focusing model V. P. K. *Special*, the Diffusion attachments are, of course, intended for close-ups only.

## Kodak Sky Filters

Kodak Sky Filters are glass attachments mounted in the same manner as the Kodak Portrait Attachments.

The Sky Filter is intended to equalize the great difference of light between the sky and foreground in landscape photography. Only the upper half of the filter is stained a yellow color to relieve the brightness from the sky, while the lower half of the filter being colorless, permits a normal exposure for the foreground.

## Kodak Color Filters

Kodak Color Filters are of great value in outdoor photography, and for all subjects embracing colors which act weakly on the sensitive film, as they hold back the strong blue and violet rays, affording the weaker colors time to record. The dye used in Kodak Color Filters is one of the discoveries of the Eastman Research Laboratory.



# Kodak Portrait Attachments, Kodak Diffusion Portrait Attachments, Kodak Sky Filters and Kodak Color Filters

Prices

Order by this Number	For Vest Pocket Autographic Kodaks	Portrait Attachments	Diffusion Attachments	Sky and Color Filters
No. 1.	For Regular Vest Pocket Kodak, with single lens . . . . .	\$0.75	\$1.25	\$0.75
No. 8.	For Regular Vest Pocket Kodak, with Rapid Rectilinear Lens . . . . .	.75	1.25	.75
No. 8.	For Special Vest Pocket Kodak, fixed focus model, with Anastigmat Lens . . . . .	.75	1.25	.75
No. 8A.	For Special Vest Pocket Kodak, focusing model . . . . .			.75
No. 8A.	V. P. K. Diffusion Disc, for Special Vest Pocket Kodak, focusing model . . . . .		1.25	

## For Autographic Kodaks, Junior

No. 8.	For No. 1 Autographic Kodak Junior, with single or double lens . . . . .	.75	1.25	.75
No. 3.	For No. 1 Autographic Kodak Junior, with Kodak Anastigmat, <i>f</i> 7.7 Lens . . . . .	.75	1.25	1.15
No. 3.	For No. 1A Autographic Kodak Junior, with single lens, double lens or Kodak Anastigmat, <i>f</i> 7.7 Lens (without engraving on front of lens barrel unless in Ilex Universal Shutter) . . . . .	.75	1.25	1.15
No. 13.	For No. 1A Autographic Kodak Junior, with Kodak Anastigmat, <i>f</i> 7.7 Lens (with engraving on front of lens barrel unless in Ilex Universal Shutter) . . . . .	.75	1.25	1.15
No. 5.	For No. 2C Autographic Kodak Junior, with single or double lens . . . . .	.75	1.50	1.50
No. 7.	For No. 2C Autographic Kodak Junior, with Kodak Anastigmat, <i>f</i> 7.7 Lens . . . . .	.75	1.50	1.50
No. 5.	For No. 3A Autographic Kodak Junior, with single or double lens . . . . .	.75	1.50	1.50
No. 7.	For No. 3A Autographic Kodak Junior, with Kodak Anastigmat, <i>f</i> 7.7 Lens . . . . .	.75	1.50	1.50

## For Autographic Kodaks

No. 3.	For No. 1 Pocket Kodak, Series II, fixed focus and focusing models . . . . .	.75	1.25	1.15
No. 6.	For No. 1A Pocket Kodak, Series II, fixed focus model . . . . .	.75	1.50	1.15
No. 13.	For No. 1A Pocket Kodak, Series II, focusing model . . . . .	.75	1.25	1.15
No. 3.	For No. 1A Autographic Kodak, with double lens . . . . .	.75	1.25	1.15
No. 13.	For No. 1A Autographic Kodak, with Kodak Anastigmat, <i>f</i> 7.7 Lens . . . . .	.75	1.25	1.15
No. 3.	For No. 3 Autographic Kodak, with double lens . . . . .	.75	1.25	1.15
No. 13.	For No. 3 Autographic Kodak, with Kodak Anastigmat, <i>f</i> 7.7 Lens . . . . .	.75	1.25	.75
No. 9.	For No. 3 Autographic Kodak, with Kodak Automatic Shutter . . . . .	.75	1.25	1.50
No. 5.	For No. 3A Autographic Kodak, with double lens . . . . .	.75	1.50	1.50
No. 7.	For No. 3A Autographic Kodak, with Kodak Anastigmat, <i>f</i> 7.7 Lens . . . . .	.75	1.50	1.50

## For Autographic Kodaks, *Special*

No. 6.	For No. 1 Autographic Kodak <i>Special</i> , with any listed lens . . . . .	.75	1.50	1.15
No. 6.	For No. 1A Autographic Kodak <i>Special</i> , with any listed lens . . . . .	.75	1.50	1.15
No. 7.	For No. 2C Autographic Kodak <i>Special</i> , with Kodak Anastigmat, <i>f</i> 6.3 Lens . . . . .	.75	1.50	1.50
No. 6.	For No. 3 Autographic Kodak <i>Special</i> , with any listed lens . . . . .	.75	1.50	1.15
No. 7.	For No. 3A Autographic Kodak <i>Special</i> , with any listed lens . . . . .	.75	1.50	1.50

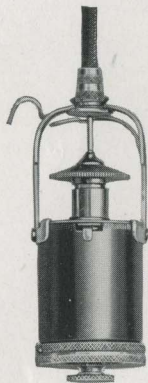
## For Box Brownies

No. 1.	For No. 0 Box Brownie, with single lens . . . . .	.75	1.25	.75
No. 1.	For No. 2 Box Brownie, with single lens . . . . .	.75	1.25	.75
No. 2.	For No. 2A Box Brownie, with single lens . . . . .	.75	1.25	.75
No. 4.	For No. 2C Box Brownie, with single lens . . . . .	.75	1.25	1.15
No. 4.	For No. 3 Box Brownie, with single lens . . . . .	.75	1.25	1.15

## For Folding Autographic Brownies

No. 8.	For No. 2 Folding Autographic Brownie, with single or double lens . . . . .	.75	1.25	.75
No. 3.	For No. 2A Folding Autographic Brownie, with single or double lens . . . . .	.75	1.25	1.15
No. 5.	For No. 2C Folding Autographic Brownie, with single or double lens . . . . .	.75	1.50	1.50
No. 5.	For No. 3A Folding Autographic Brownie, with single or double lens . . . . .	.75	1.50	1.50

## Kodak Self Timer



One of the most popular of the Kodak accessories is the Kodak Self Timer which fits on the cable release of any Kodak or Brownie and automatically presses the button. The device consists of a piston rod actuated by a spring, and the time of operation is controlled by the amateur within the limits of 1/2 second and 1 minute. He sets it for the time interval desired and then takes his position in front of the lens until the "click" tells him that the picture is made.

Through the Kodak Self Timer, the group is kept complete and self-portraits are easily possible.

Kodak Self Timer . . . . . \$1.25

## Velox Transparent Water Color Stamps

To convert a black and white print into a beautifully colored picture is a task simple and interesting with these stamps. No artistic skill is necessary as the colors are self-blending. Velox Transparent Water Color Stamps are equally suitable for lantern slides.

The Velox Transparent Water Color Outfit is a complete coloring set put up in a cardboard case and including book of stamps, three brushes and white enameled mixing palette.



Velox Transparent Water Color Stamps, complete booklet, 12 colors . . .	\$0.45
Separate Color Leaves, per sheet . . . . .	.04
Set of three Special Brushes, per set . . . . .	.50
Mixing Palette . . . . .	.25
Velox Transparent Water Color Stamp Outfit, including book, three brushes and palette . . . . .	1.00

# Kodak Film Tank

Anybody can get as correctly developed negatives by developing films in the Kodak Film Tank as an expert can by any known method of development.

All that is necessary is to use the developer recommended and develop for the length of time the tank instructions require for the temperature at which the developer is used.

Duplicating outfits for developing more than one roll at a time are listed below.



## Prices

Brownie Kodak Film Tank, for use with No. 1, No. 2 and No. 2 Folding	
Brownie Cartridges, complete . . . . .	\$3.50
Spool Adapter, for Vest Pocket Kodak Film . . . . .	.10
Vest Pocket Kodak Film Tank, for Vest Pocket Cartridges, complete . . . . .	3.00
2½-inch Kodak Film Tank, for use with all Kodak or Brownie Cartridges	
having a film width 2½ inches or less, complete . . . . .	4.50
3½-inch Kodak Film Tank, for use with all Kodak and Brownie Cartridges	
having a film width of 3½ inches or less, complete . . . . .	5.50
5-inch Kodak Film Tank, for use with all Kodak and Brownie Cartridges	
having a film width of 5 inches or less, complete . . . . .	6.50
7-inch Kodak Film Tank, for use with No. 5 Cartridge Kodak or narrower	
film cartridges, complete . . . . .	8.00
Duplicating Outfit, consisting of one solution cup, one transferring reel	
and one apron, for Brownie Kodak Film Tank . . . . .	1.50
Ditto, for Vest Pocket Film Tank . . . . .	1.50
Ditto, for 2½-inch Kodak Film Tank . . . . .	2.25
Ditto, for 3½-inch Kodak Film Tank . . . . .	2.75
Ditto, for 5-inch Kodak Film Tank . . . . .	3.25
Ditto, for 7-inch Kodak Film Tank . . . . .	4.00
Flexible Fixing and Washing Tank, for 3½-inch Kodak Film Tank . . . . .	2.50
Kodak Tank Developer, for Brownie Kodak Film Tank, per ½ dozen . . . . .	.20
Ditto, for Vest Pocket Tank . . . . .	.20
Ditto, for 2½-inch tank, per package, ½ dozen . . . . .	.25
Ditto, for 3½-inch tank, per package, ½ dozen . . . . .	.25
Ditto, for 5-inch tank, per package, ½ dozen . . . . .	.30
Ditto, for 7-inch tank, per package, ½ dozen . . . . .	.30
Kodak Acid Fixing Powder, per ¼-pound package . . . . .	.10
Ditto, per 1-pound package . . . . .	.25



## No. 2 Brownie Developing Box

This is a simplified form of the Kodak Film Tank, offering the same assurance of perfectly developed film, and so simple that any boy or girl can readily operate it.

It consists of a metal box with cover, just long enough to accommodate a roll of Nos. 117, A120, 120, A127 or 127 Film Cartridge in one loop. All the operations are performed in daylight.

### Prices

No. 2 Brownie Developing Box . . . . .	\$1.75
Brownie Developing Box Powders, per package of 6 . . . . .	.20
Kodak Acid Fixing Powders, 1/2-pound package . . . . .	.15
Ditto, 1/4-pound package . . . . .	.10

## Developing and Printing Outfits

By combining a variety of articles and making up the outfits in large quantities we are able to offer complete dark-room developing and printing outfits at a much lower price than if the articles were purchased separately. The Eastman 3A Outfit, below, contains every requisite for finishing twenty-four 3 1/4 x 5 1/2-inch or smaller pictures.

One Kodak Candle Lamp . . . . .	\$0.40
One Printing Frame . . . . .	.40
One Glass for Frame . . . . .	.05
One 4-ounce Graduate . . . . .	.15
One Stirring Rod . . . . .	.06
Four Developing Trays . . . . .	.40
Five Tubes Eastman Special Developer . . . . .	.30
One-half pound Kodak Acid Fixing Powder . . . . .	.15
Two dozen 3 1/4 x 5 1/2-inch Velox Paper . . . . .	.40
Two ounces Nepera Solution for developing Velox . . . . .	.20
Instruction Book (free)	\$2.51

EASTMAN 3A OUTFIT, COMPLETE, NEATLY PACKED, **\$2.00**

EASTMAN A B C OUTFIT, similar to above but providing for 4 x 5-inch or smaller pictures . . . . . **\$2.00**



# Kodak Amateur Printer

Through the glass window in the removable top, prints may be made with white margins, any size from  $1\frac{5}{8} \times 2\frac{1}{2}$  to  $4 \times 5\frac{1}{2}$  inches, by a simple automatic masking device, which holds the negatives firmly until released. Within the box is a small red electric bulb to permit the adjustment of negative and paper, and provision is made for a 60 Watt Mazda Lamp, which is automatically turned on when the hinged frame is closed to make the exposure. To secure even illumination on negatives of various sizes, the position of the lamp is readily adjustable.

The printer is supplied without lamp, but including  $5\frac{1}{2}$  feet of cord and plug.

The Kodak Amateur Printer . . . \$10.00



## Kodak Serial Printing Frame No. 2

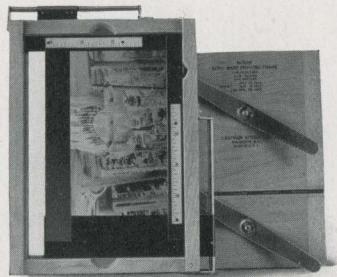
For printing from Vest Pocket Kodak and No. 0 Brownie negatives. Developed film slides through the frame in a continuous strip, facilitating handling.

Kodak Serial Printing Frame No. 2 for V. P. K. and No. 0 Brownie negatives . . . \$0.60

## Kodak Auto-Mask Printing Frame

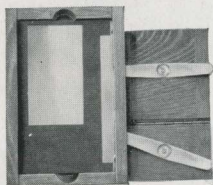
This frame is adaptable to the printing of negatives of any amateur size, from  $4 \times 5$ ,  $3\frac{1}{4} \times 5\frac{1}{2}$  inches and smaller. Attached to the frame are two slides adjusted from the outside, forming a mask of whatever size is desired.

Any number of uniformly masked prints may be made without readjustment.



Kodak Auto-Mask Printing Frame . . . \$1.50

# Kodak Maskit Printing Frame



The Kodak Maskit Printing Frame overcomes the difficulty of the negative and mask slipping on the glass, and secures prints with a uniform white margin.

Kodak Maskit,  $3\frac{1}{4}$  x  $4\frac{1}{4}$ -inch, opens two-thirds . . . . . \$0.65  
 Kodak Maskit,  $3\frac{1}{4}$  x  $5\frac{1}{2}$ -inch, opens two-thirds . . . . . .70  
 Kodak Maskit, 5 x 7-inch, opens two-thirds . . . . . .85

## Kodaloid Printing Masks

These transparent, orange-red color masks, intended for use with Maskit Printing Frames are supplied in sets of three each, with different size opening.

Per set of 3,  $3\frac{1}{4}$  x  $4\frac{1}{4}$ , \$0.30      Per set of 3,  $3\frac{1}{4}$  x  $5\frac{1}{2}$ , \$0.30      Per set of 3, 5 x 7, \$0.45

## Eastman Printing Frames

Have a two-section back with clamps to hold the negative and paper firmly.

For  $2\frac{1}{4}$  x  $3\frac{3}{4}$ -inch plates and V. P. K. or smaller film negatives, opens two-thirds . . . . . \$0.35  
 For  $2\frac{1}{2}$  x  $4\frac{1}{4}$ -inch or smaller film negatives, opens two-thirds . . . . . .40  
 For  $3\frac{1}{4}$  x  $4\frac{1}{4}$ -inch or smaller film negatives, opens two-thirds . . . . . .40  
 For  $3\frac{1}{4}$  x  $5\frac{1}{2}$ -inch or smaller film negatives, opens two-thirds . . . . . .40  
 For  $3\frac{1}{4}$  x  $5\frac{1}{2}$ -inch plates, opens two-thirds . . . . . .45  
 For 4 x 5-inch plates, opens two-thirds . . . . . .40  
 For 5 x 7-inch plates, opens two-thirds . . . . . .55  
 For  $3\frac{1}{2}$  x 12-inch No. 4 Panoram Kodak negatives, opens in three sections . . . . . 1.15  
 For  $2\frac{1}{4}$  x 7-inch No. 1 Panoram Kodak negatives, opens in two sections . . . . . .70

## Kodaloid Printing Masks

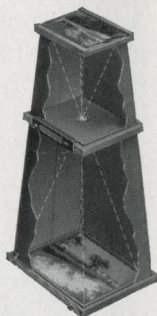
Made of transparent Kodaloid, to fit the regular Printing Frames, and offering various sizes of openings.

For 3A Frames, 8 mask-  
ing sizes, each . . . \$0.10      For 4 x 5 Frames, 7  
masking sizes, each . \$0.10      For 5 x 7 Frames, 6  
masking sizes, each . \$0.15

## Brownie Enlarging Camera

Consists of a light-tight cone, with an attachment at the small end to hold the negative, and another at the large end for the paper. The lens is always in focus. All except No. 2 Brownie Post-card are collapsible.

\*No. 2 Brownie Post-card Enlarging Camera, for  $3\frac{1}{4}$  x  $5\frac{1}{2}$  enlargements from  $2\frac{1}{4}$  x  $3\frac{1}{4}$ -inch negatives . . . . . \$3.71  
 \*No. 2 Brownie Enlarging Camera, for 5 x 7 enlargements from  $2\frac{1}{4}$  x  $3\frac{1}{4}$ -inch negatives . . . . . 4.86  
 \*No. 3 Ditto, for  $6\frac{1}{2}$  x  $8\frac{1}{2}$  enlargements from  $3\frac{1}{4}$  x  $4\frac{1}{4}$ -inch negatives, also for proportionate enlargements from smaller negatives . . . . . 6.38  
 \*No. 3A Ditto, for 7 x 11 and  $6\frac{1}{4}$  x  $10\frac{1}{2}$ -inch enlargements from  $3\frac{1}{4}$  x  $5\frac{1}{2}$  and  $2\frac{7}{8}$  x  $4\frac{7}{8}$ -inch negatives, respectively; also for proportionate enlargements from smaller negatives . . . . . 6.91  
 \*No. 4 Ditto, for 8 x 10,  $6\frac{3}{8}$  x 10 and  $5\frac{3}{8}$  x  $9\frac{3}{8}$ -inch enlargements from 4 x 5,  $3\frac{1}{4}$  x  $5\frac{1}{2}$  and  $2\frac{7}{8}$  x  $4\frac{7}{8}$ -inch negatives, respectively . . . . . 6.91



## V. P. K. Enlarging Camera

Like the Brownie Enlarging Camera in principle, it makes  $3\frac{1}{4}$  x  $5\frac{1}{2}$  enlargements from  $1\frac{5}{8}$  x  $2\frac{1}{2}$  negatives.

\*Vest Pocket Kodak Enlarging Camera . . . . . \$3.71

\*These prices include the Excise Tax.

# The Kodak Auto-Focus Enlarger

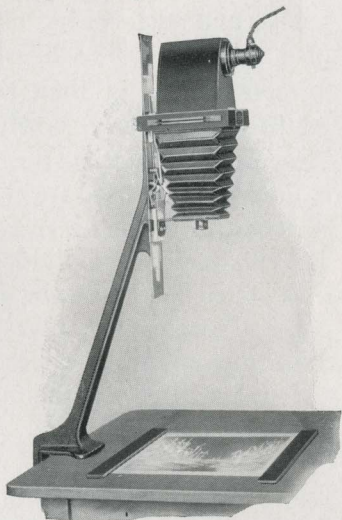
Move the camera up and down and while the image grows smaller or larger, the focus remains critically sharp. With this outfit, enlarging becomes a simplified process that is almost as rapid and certainly as easy as contact printing.

The standard clamps to an ordinary table and the bromide paper lies flat on the table top, where it is held in position by a quickly adjusted paper holder.

Prints from 1½ to 3½ diameters can be made from either plate or film negatives up to 4 x 6 inches. The largest possible print is 14 x 21. V. P. K. negatives will make 5⅝ x 8¾ enlargements.

The lens is a Kodak Anastigmat, which insures sharpness.

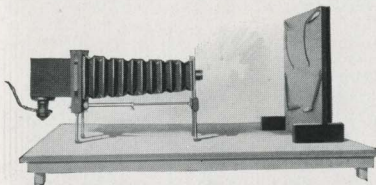
A diffusing disc is supplied separately for soft focus effects.



Kodak Auto-Focus Enlarger with Kodak Anastigmat Lens, electric cord and plug (without the 60 Watt Mazda Lamp required), set of six flexible metal masks (with Excise Tax included) . . . . . \$35.00  
 Diffusing Disc . . . . . 1.00

## Kodak Enlarging Outfit

This Outfit will make enlargements up to the size of the easel (14 x 17 inches) from film or glass negatives up to 4 x 6 inches. It consists of a camera of the focusing type, lens, easel, lamp housing, light cord and plug, but without the 60 Watt Mazda electric light bulb. With a portrait attachment, reductions may be made for lantern slides.



Kodak Enlarging Outfit (with Excise Tax included) . . . . . \$20.00  
 Lantern Slide Block . . . . . .75  
 Portrait Attachment No. 5 . . . . . .75

# Velox

Velox is a simply-worked developing-out paper that prints by artificial light and that, because it is made especially for amateur negatives, is rightfully called "the amateur's own paper."

To its already wide variety of grades and surfaces has now been added No. 1, a degree of contrast softer than the emulsion formerly labeled "Special." Numerical designations are now used for the different contrasts to aid in ready selection. All Velox is non-abrasion.

GRADE	SURFACE	CONTRAST			
Velvet Velox	Semi-Gloss	*1	*2	*3	*4
Portrait Velox	Smooth Matte	2			
Carbon Velox	Matte	1	2	3	4
Glossy Velox	Enameled	1	*2	*3	4

\* Furnished also in Double-weight Velox. Double-weight papers require no mount and when printed under a mask, which will insure a white margin, offer a very artistic effect.

Velox papers are divided broadly into four degrees of contrast called No. 1 (the new contrast), No. 2 (formerly Special), No. 3 (formerly Regular), No. 4 (formerly Contrast), each division containing a variety of surfaces. (See adjoining table.)

No. 1 will secure the best possible results from extremely contrasty negatives. No. 2 (formerly Special Velox) should be used with average as well as contrasty negatives. No. 3 (formerly Regular Velox) should be used when printing from flat negatives. No. 4 (formerly Contrast Velox) will secure the best possible results from extremely thin or from very flat negatives. Velvet Velox gives semi-gloss prints of exceptional quality and is generally used for making prints from Kodak negatives.

## Prices

Size Inches	SINGLE WEIGHT			DOUBLE WEIGHT		
	Dozen	½ Gross	Gross	Dozen	½ Gross	Gross
1½ x 2½	\$.12		\$1.10	\$.15		\$1.40
2¼ x 3¼	.12		1.10	.15		1.40
2½ x 4¼	.15		1.35	.20		1.70
3½ x 3½	.15		1.60	.20		2.00
3¼ x 4¼	.20		1.75	.25		2.20
2¾ x 4¾	.20		1.75	.25		2.20
3¼ x 5½	.20		2.00	.25		2.50
4 x 5	.25		2.30	.30		2.90
2¼ x 7	.20		2.00	.25		2.50
4¼ x 6½	.30		3.05	.40		3.80
5 x 7	.40	\$2.10	3.90	.50	\$2.60	4.90
3½ x 12	.50	2.60	4.75	.60	3.10	5.95
Velox Post-cards, 3½ x 5½, furnished in Velvet, Contrasts Nos. 1, 2, 3 and 4; Glossy, Contrasts Nos. 2 and 3 . . . . .				.30	1.50	2.90
Velox Double Post-cards, 3½ x 11 inches . . . . .				.60	3.00	5.80

## Velox Sundries

Nepera Solution, per 4-ounce bottle . . . . .	\$0.28
Ditto, per 16-ounce bottle . . . . .	.84
Nepera Auxiliary Powders (for converting Nepera Solution to a film or plate developer), per package 1 dozen . . . . .	.35
*Velox Re-developer for Sepia Tones, per 4-ounce bottle . . . . .	.50
*Ditto, 2 ounces (sufficient for 150 4 x 5 prints) . . . . .	.30
*Velox Re-developer Tubes for Sepia Toning, per package 12 tubes . . . . .	.84
Velox Liquid Hardener, per 4-ounce bottle . . . . .	.25
Ditto, 8-ounce bottle . . . . .	.35
Kodak Acid Fixing Powder for fixing Velox Prints, per pound . . . . .	.25
Ditto, $\frac{1}{2}$ pound . . . . .	.15
Ditto, $\frac{1}{4}$ pound . . . . .	.10

\*Package also includes bleaching agent.

## Kodak Velvet Green

Effects heretofore to be had only by the carbon process can be secured by any amateur photographer with this paper.

For landscapes, for marine scenes, and in fact, for the majority of outdoor amateur negatives, the rich green of prints Kodak Velvet Green produces most beautiful and harmonious effects, with an indescribable "atmosphere" of nature itself.

And to use this paper the amateur need not learn new processes, nor possess extraordinary skill. Anyone who can print on Velox paper can print just as successfully on Kodak Velvet Green, as the two processes after exposure are identical, except for a slight change in the fixing bath.

As this paper is much slower than the average developing-out paper, it is advisable to print by daylight.

The surface — a smooth semi-matte — brings out detail fully, and the paper is supplied in both single and double weights.

Kodak Velvet Green Post-cards are very appropriate for use at vacation time.

Prices are the same as for Velox, and it is obtainable in all the Velox sizes.

# Eastman Bromide Papers

For enlargements, Eastman Bromide Papers are emphatically faster than the other developing papers and as easy to use as Velox. Redevelopment on Royal Bromide gives Sepia effects. Grades: Velvet, Brilliant Velvet, Royal, Enameled, Matte-enamel, and Standard B and C.

Size	Per Doz.	Size	Per Doz.	Size	Per Doz.
5 x 7	\$0.50	8 x 10	\$1.10	14 x 17	\$3.15
5 x 8	.55	10 x 12	1.70	16 x 20	4.20
6½ x 8½	.80	11 x 14	2.10	18 x 22	5.25

Other sizes in proportion

## Solio Paper

A rapid, glossy, printing-out paper

Size	Per Package. 2 Doz.	Size	Per Package. 2 Doz.
1½ x 2½	\$0.20	2¼ x 7 (No. 1 Panoram Kodak)	\$0.30
2¼ x 3¼	.20		
2½ x 4¼	.25		
3½ x 3½	.25	4¼ x 6½	\$0.25
3¼ x 4¼	.25	5 x 7	.30
2⅞ x 4⅞	.25	3½ x 12 (No. 4 Panoram Kodak)	.35
3¼ x 5½	.30	Post-cards	.20
4 x 5	.40	Double Solio Post-cards	.40

Solio Toning and Fixing Powders, per carton, 5 tubes, \$0.25. Solio Combined Toning and Fixing Solution, per 8-ounce bottle, \$0.50; 4-ounce bottle, \$0.30; post-paid, \$0.50. Solio Hardener, per 8-ounce bottle, \$0.70.

## Dry Plates

Prices of plates include Excise Tax

### Seed (Single Coated)

Size	Per Doz.
3½ x 3½	\$0.57
3¼ x 4¼	.67
3¼ x 5½	.93
4 x 5	.93
4¼ x 6½	1.35
5 x 7	1.50

### Lantern Slide Plates,

3¼ x 4	\$0.52
--------	--------

### Seed Non-Halation Ortho (Double Coated)

Size	Per Doz.
3¼ x 4¼	\$0.83
3¼ x 5½	1.14
4 x 5	1.14
4¼ x 6½	1.71
5 x 7	1.86

### Cover Glass for Lantern

Slides	\$0.35
--------	--------

### Wratten & Wainwright Panchromatic

Size	Per Doz.
3½ x 3½	\$0.67
3¼ x 4¼	.83
3¼ x 5½	1.14
4 x 5	1.14
4¼ x 6½	1.71
5 x 7	1.86

### Lantern Slide Binders, per

package, 50 strips	\$0.20
--------------------	--------

# Kodak Cut Film

Kodak Cut Film offers every advantage of plates and, in addition, is non-halation, weighs but a fraction as much, is easier to handle, unbreakable and produces negatives of superior quality. Through the agency of the Combination Back and Double Plate Holder (page 52) and Kodak Cut Film Sheath, Nos. 3 and 3A Kodaks, both regular and *Special* models, may be adapted for use with Kodak Cut Film.

It is supplied in two speeds.

The regular Kodak Cut Film is equal in speed to the best portrait plate emulsions, and is standard in every respect.

Kodak Cut Film *Super Speed* has, as its name implies, an extra fast emulsion, yet its latitude, gradation and fineness of grain are equal to those of the regular speed. It can be depended on to give the best possible negatives under difficult light conditions or when exposure must necessarily be short. This *Super Speed* feature proves its worth especially when making indoor portraits or snapshots in the shade. And all this added speed is attained without sacrificing any of those qualities on which film superiority is founded.

	2¼ x 3¼	3¼ x 4¼	3¼ x 5½	4 x 5
Kodak Cut Film, dozen . . . . .	\$0.46	\$0.67	\$0.93	\$0.93
Kodak Cut Film <i>Super Speed</i> , dozen . . . . .	.52	.77	1.03	1.03

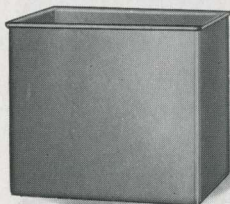
*The prices of Kodak Cut Film include the Excise Tax*

## Kodak Cut Film Sheath

Adapts a plate holder to the use of Kodak Cut Film. It is made of aluminum, ribbed for rigidity and instantly inserted or removed.

	2¼ x 3¼	3¼ x 4¼	3¼ x 5½	4 x 5
Kodak Cut Film Sheath . . . . .	\$0.10	\$0.10	\$0.15	\$0.15

## Kodak Developing Box, No. 1



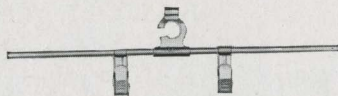
This tank provides a swift and easy means of obtaining uniform development of Kodak Cut Film. It takes twelve films, each suspended in the solution from a Kodak Film Developing Hanger. Development proceeds by the time and temperature method.

The tank is made of monel metal and measures 4 x 5¼ x 6 inches.

Kodak Developing Box, No. 1, without hangers . . . . . \$2.00

## Kodak Cut Film Developing Hanger

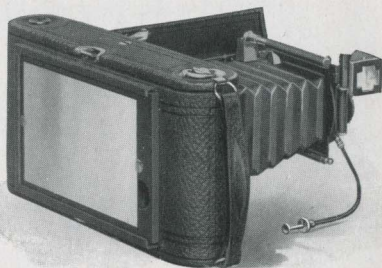
For use with the Kodak Developing Box, No. 1. It is considerably longer than the box so that it lies securely across the top. The clips, which grip the edges of the film securely, are of monel metal.



Kodak Film Developing Hangers, each . . . . . \$0.20

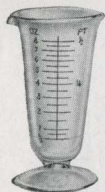
## Combination Backs

Used with the Nos. 3 and 3A Auto-graphic Kodaks, Regular and *Special*, in place of the regular Autographic Back, they accommodate double plate holders and a removable ground glass for focusing. With the addition of Kodak Cut Film Sheath, the Combination Back further equips the camera for use with Kodak Cut Film. (See page 51.)



Combination Back with ground glass, for Nos. 3 or 3A "Regular" . . . . .	\$4.00
Ditto, for No. 3 <i>Special</i> . . . . .	4.50
Ditto, for No. 3A <i>Special</i> . . . . .	5.00
Double Plate Holders for any of above, each . . . . .	1.50

## Eastman Visible Graduate



This new moulded graduate, as its name implies, may be easily read in the dark-room under the rays of the ruby light.

The graduations are opaque, not translucent as is the case with most graduates.

2-ounce . . . . .	\$0.30	8-ounce . . . . .	\$0.50
4-ounce . . . . .	.40	16-ounce . . . . .	.80

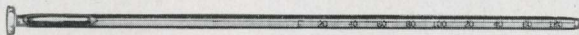
## Eastman Thermometer

Valuable in tank or tray development. The hook for suspending and the curved back to fit inside the tank are desirable features.



Eastman Thermometer . . . . .	\$0.75
-------------------------------	--------

## Thermometer Stirring Rod



A combined stirring rod and thermometer. Carefully tested and accurate. Has flat end for pulverizing. The rod is  $\frac{1}{4}$  inch in diameter and  $9\frac{1}{4}$  inches long.

Thermometer Stirring Rod . . . . .	\$1.00
------------------------------------	--------

## Developing Trays

Bull's Eye—Composition			Enamel				
$3\frac{1}{4} \times 4\frac{1}{4}$ . . . . .	\$0.30	$4 \times 6$ . . . . .	\$0.45	$2\frac{1}{2} \times 7$ . . . . .	\$0.60	$4 \times 5$ . . . . .	\$0.75
$4 \times 5$ . . . . .	.40	$5 \times 8$ . . . . .	.80	$3\frac{1}{2} \times 12$ . . . . .	1.30	$4 \times 6$ . . . . .	.85
						$5 \times 7$ . . . . .	1.10

## Kodak Magnesium Ribbon Holder



Provides extra light for interior work, copying or portraiture, and for exposing Velox.

The ribbon is best ignited by a special alcohol lamp.

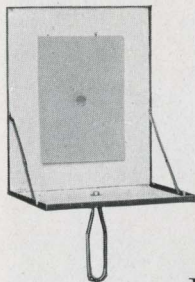
Magnesium Ribbon Holder . . . . .	\$0.35
Alcohol Lamp . . . . .	.30



## Flash Light Material

The Flash Light makes the amateur photographer independent of daylight. He has absolute control of the illumination, not only as to the amount of light, but also its direction.

The simplest method of making flash light pictures is by means of the Eastman Flash Sheets and Kodak Flash Sheet Holder. The sheets burn slowly, giving a broad, soft light, while the holder makes their proper use conveniently easy.



No. 1 Flash Sheets, per package of 1/2 dozen sheets, 3 x 4-inch . . .	\$0.35
No. 2 Flash Sheets, per package of 1/2 dozen sheets, 4 x 5-inch . . .	.56
No. 3 Flash Sheets, per package of 1/2 dozen sheets, 5 x 7-inch . . .	.84
Kodak Flash Sheet Holder . . . . .	1.25

Flash cartridges are recommended only where absolutely instantaneous exposures are required.

Eastman Spreader Flash Cartridges, for use with pistol or fuse (price includes both fuse and cap), per package of 1/2 dozen . . .	\$0.50
Eastman Spreader Flash Cartridge Pistol . . . . .	1.50
Eastman No. 1 Flash Cartridges, for use only with fuse, per package of 1/2 dozen . . . . .	1.00
Ditto, No 2 . . . . .	.70
Ditto, No 3 . . . . .	.45

## Kodak Dry Mounting Tissue

Mounts prints even on thin mounts without curl. Just fix the tissue on print, lay on mount and press with a warm flat iron; no sticky fingers, no muss of any kind.

### Prices

Size, 3 1/2 x 3 1/2, 3 dozen . . . . .	\$0.10	Size, 4 x 5, 2 dozen . . . . .	\$0.10
Size, 3 1/4 x 4 1/4, 3 dozen . . . . .	.10	Size, 4 1/4 x 6 1/2, 1 dozen . . . . .	.10
Size, 3 1/4 x 5 1/2, 2 dozen . . . . .	.10	Size, 5 x 7, 1 dozen . . . . .	.10

## Kodak Photo Paste

The weighted friction cap, and the spreader top of the tube eliminate muss and fuss and the paste, itself, is an excellent adhesive not only for mounting but for desk or household use as well.

2-ounce tube . . . . . \$0.15



## Eastman Photo Paste

A solid, first quality white paste that will not discolor print or mount.

4-ounce jar . . . . .	\$0.25
8-ounce jar . . . . .	.35



## Kodak Liquid Glue

Permits tacking the prints down at the corners, rather than pasting solid.

Per tube . . . . . \$0.15



## The Kodak Album

Loose-leaf, open-back style—made of finest quality genuine leather and surfaced in new patterns. The black in an etched crystline, the seal brown in a rich Indian weave effect. Stamped in gilt foil with the word “Photographs.” Fifty black, round-cornered leaves held in place with silk-finished cord through cover and metal tubes.

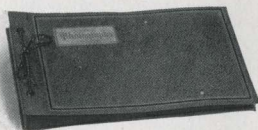


5 x 8. RA, Black Crystline . . . . .	\$2.25	WA, Brown Weave . . . . .	\$2.25
7 x 11. RB, Black Crystline . . . . .	3.25	WB, Brown Weave . . . . .	3.25
10 x 12. RC, Black Crystline . . . . .	4.50	WC, Brown Weave . . . . .	4.50
11 x 14. RD, Black Crystline . . . . .	5.50	WD, Brown Weave . . . . .	5.50

Package 12 extra leaves, Size A (5 x 8) \$0.15; Size B (7 x 11) \$0.18;  
Size C (10 x 12) \$0.30; Size E (11 x 14) \$0.40.

## The Beverly Album

Loose-leaf, open-back style—a new and especially handsome model. Cover is of de luxe artificial leather, blue black, seal grain finished. The word “Photographs” set in an engraved ribbed panel is raised embossed in old gold in upper left corner of cover. Fifty black leaves held in place by silk-finished cord through cover and metal tubes.

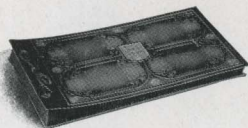


A, 5 x 8 . . . \$1.90	B, 7 x 11 . . . \$2.50	C, 10 x 12 . . . \$3.25	D, 11 x 14 . . . \$3.50	E, 8 x 10 . . . \$2.50
-----------------------	------------------------	-------------------------	-------------------------	------------------------

Package 12 extra leaves, Size A (5 x 8) \$0.15; Size B (7 x 11) \$0.18;  
Size C (10 x 12) \$0.30; Size E (11 x 14) \$0.40; Size K (8 x 10) \$0.20.

## The Colonial Album

Loose-leaf, open-back style, added this year. Cover is of de luxe artificial leather. The beautiful design in polychrome covers the entire surface and in center the words “Ye Photo Album” are raised embossed in color. Fifty black leaves held in place by silk-finished cord through cover and metal tubes. This is a most attractive album.



A, 5 x 8 . . . \$1.90	B, 7 x 11 . . . \$2.50	C, 10 x 12 . . . \$3.25	D, 11 x 14 . . . \$3.50
-----------------------	------------------------	-------------------------	-------------------------

Package 12 extra leaves, Size A (5 x 8) \$0.15; Size B (7 x 11) \$0.18;  
Size C (10 x 12) \$0.30; Size E (11 x 14) \$0.40.

## The Damascus Album

Loose-leaf, open-back style. Fifty black loose leaves held in place by a cord through covers and metal tubings. De luxe artificial leather, embossed and tinted in art craft shades.



A, 5 x 8 . . . \$1.90	B, 7 x 11 . . . \$2.50	C, 10 x 12 . . . \$3.25	D, 11 x 14 . . . \$3.50
-----------------------	------------------------	-------------------------	-------------------------

Package 12 extra leaves, Size A (5 x 8) \$0.15; Size B (7 x 11) \$0.18;  
Size C (10 x 12) \$0.30; Size E (11 x 14) \$0.40.

## Nubian Album

Loose-leaf, open-back style. Etched surfaced, artificial leather cover—ornamented in black relief with a floral design and the word "Photographs." Handsome and durable. Fifty black leaves held in place by silk-finished cord through cover and metal tubes.



5 x 8, BA	.....	\$1.10
7 x 11, BB	.....	1.50
10 x 12, BC	.....	2.25
11 x 14, BD	.....	2.50

Package 12 extra leaves, Size A (5 x 8) \$0.15; Size B (7 x 11) \$0.18;  
Size C (10 x 12) \$0.30; Size E (11 x 14) \$0.40.

## The Agrippa Album



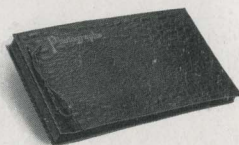
Loose-leaf style. Choice of genuine beautiful black grain leather or embossed black cloth cover. Fifty black leaves held in place by cord and holder inside of cover.

5 x 8	.....	CA, cloth \$1.10	LA, leather	.....	\$2.10
7 x 11	.....	CB, cloth 1.50	LB, leather	.....	3.00
10 x 12	.....	CC, cloth 2.25	LC, leather	.....	5.00
9 x 14	.....	CD, cloth 2.50	LD, leather	.....	5.25

Package 12 extra leaves, Size A (5 x 8) \$0.15; Size B (7 x 11) \$0.18;  
Size C (10 x 12) \$0.30; Size D (9 x 14) \$0.35.

## The La Nouvelle Album

Loose-leaf, open-back style. Fifty black leaves held in place by cord through cover and metal tubes. The word "Photographs" stamped in gold on cover. The cover is an attractively embossed dark brown alligator pattern imitation leather.



A, 5 x 8	.....	\$1.10	C, 10 x 12	.....	\$2.25
B, 7 x 11	.....	1.50	D, 11 x 14	.....	2.50

Package 12 extra leaves, Size A (5 x 8) \$0.15; Size B (7 x 11) \$0.18;  
Size C (10 x 12) \$0.30; Size E (11 x 14) \$0.40.

## The Juno Album



Loose-leaf, open-back style. Fifty black loose leaves held in place by metal tubing and cord through covers. Brown or black embossed English grain imitation leather cover. The word "Photographs" stamped in gilt on cover.

5 x 8, BA, brown or CA, black	.....	\$1.10
7 x 11, BB, brown or CB, black	.....	1.50
10 x 12, BC, brown or CC, black	.....	2.25
11 x 14, BD, brown or CD, black	.....	2.50

Package 12 extra leaves, Size A (5 x 8) \$0.15; Size B (7 x 11) \$0.18;  
Size C (10 x 12) \$0.30; Size E (11 x 14) \$0.40.

## The Amateur Folder

Just the thing for carrying or mailing favorite pictures. Made of durable, marble grey cover stock. The picture is inserted under the corners which hold it securely.

No.		Price per doz.
1	for 2¼ x 3¼, prints upright or horizontal	\$0.50
1A	for 2½ x 4¼, prints upright or horizontal	.55
2C	for 2¾ x 4¾, prints upright or horizontal	.57
3A	for 3¼ x 5½, prints upright or horizontal	.60

## The Rhodes Album



Loose-leaf, open-back style—choice of genuine black grained leather or embossed black book cloth with 50 black leaves held in place by metal tubes and cord through cover. Cover stamped in foil with word "Photographs."

5 x 8 . . . . .	CA, cloth \$0.90	LA, leather . . . . .	\$2.00
7 x 11 . . . . .	CB, cloth 1.25	LB, leather . . . . .	2.75
10 x 12 . . . . .	CC, cloth 2.00	LC, leather . . . . .	4.50
11 x 14 . . . . .	CD, cloth 2.25	LD, leather . . . . .	5.00
8 x 10 . . . . .	CE, cloth 1.50	LE, leather . . . . .	3.10

Package 12 extra leaves, Size A (5 x 8) \$0.15; Size B (7 x 11) \$0.18; Size C (10 x 12) \$0.30; Size E (11 x 14) \$0.40; Size K (8 x 10) \$0.20.

## The Toledo Album

Loose-leaf style. No exposed metal parts. Fifty jet black leaves held in place by a cord and holder inside of cover. Cover is made of de luxe artificial leather embossed and beautifully tinted in multi-shades.



A, 5 x 8 . . . . .	\$1.90	B, 7 x 11 . . . . .	\$2.50	C, 10 x 12 . . . . .	\$3.25	D, 11 x 14 . . . . .	\$3.50
--------------------	--------	---------------------	--------	----------------------	--------	----------------------	--------

Package 12 extra leaves, Size A (5 x 8) \$0.15; Size B (7 x 11) \$0.18; Size C (10 x 12) \$0.30; Size E (11 x 14) \$0.40.

## The Artist Album



A loose-leaf album with embossed black paper cover. Has 10 black leaves held in place by cord through cover. Just right to give to your friends as an inexpensive souvenir of some event recorded photographically, such as a vacation, auto trip, or picnic.

No. 1, 5½ x 7 . . . . .	\$0.25
Extra leaves, package of 5 . . . . .	.09
No. 4, 7 x 10 . . . . .	.35
Extra leaves, package of 5 . . . . .	.12

## Picture Message Folder

An attractively designed holder for mailing individual pictures—with additional space the size of a post-card for the written message. Prints are inserted under cut corners. For mailing, it is closed securely by the gummed seal supplied with each folder.

	Price per doz.
A—for 2¼ x 3¼ or 2⅞ x 4⅞ prints upright or horizontal . . . . .	\$0.60
B—for 2½ x 4¼ or 3¼ x 5½ prints upright or horizontal . . . . .	.60

## Eastman Film Negative Albums

These albums afford a safe, convenient and effective way of keeping film negatives. Each leaf is, itself, an envelope, and the negatives do not come in contact with each other. The index furnishes a ready reference.



For 100 negatives, 1½ x 2½ . . . . .	\$1.00
For 100 negatives, 2½ x 4¼ or smaller . . . . .	1.00
For 100 negatives, 3¼ x 4¼ or 4 x 5 or smaller . . . . .	1.25
For 100 negatives, 3¼ x 5½ or smaller . . . . .	1.25
For 100 negatives, 5 x 7 or smaller . . . . .	1.50

# Kodak Card Mounts

## The Baltic—Brown or Grey

Heavy stock, beveled edges, heavy borders. Sold only in lots of fifty, one kind and size.

No.	For Prints	Size of Mount	Per 100	Per 50	No.	For Prints	Size of Mount	Per 100	Per 50
0	1½ x 2½	3⅜ x 4¼	\$2.10	\$1.05	2C	2⅞ x 4⅞	5⅞ x 7⅞	\$3.10	\$1.55
1	2¼ x 3¼	4⅞ x 5⅞	2.60	1.30	3A	3¼ x 5½	5¼ x 8	3.40	1.70
1A	2½ x 4¼	4½ x 6¼	2.80	1.40	4	4 x 5	6 x 7	4.00	2.00
2	3½ x 3½	5½ x 5½	3.00	1.50	4A	4¼ x 6½	6½ x 8⅞	5.00	2.50
3	3¼ x 4¼	5⅞ x 6⅞	3.00	1.50	5	5 x 7	8 x 10	6.20	3.10

## Landscape—Ash Grey and Artist Brown

No.	Color	For Prints	Size of Mount	Per 50	No.	Color	For Prints	Size of Mount	Per 50
A1	Grey	5 x 7	8 x 10	\$3.00	C1	Grey	8 x 10	12 x 14	\$5.00
A2	Brown	5 x 7	8 x 10	3.00	C2	Brown	8 x 10	12 x 14	5.00
B1	Grey	6½ x 8½	10 x 12	4.00	D1	Grey	7 x 11	11 x 15	5.25
B2	Brown	6½ x 8½	10 x 12	4.00	D2	Brown	7 x 11	11 x 15	5.25

## Enlargement Folder

This new Enlargement Folder is supplied in olive grey or brown, the former with white insert, and the latter, sepia-buff insert. Either style is furnished with both oval and rectangular masks.

No.	Color	For Prints	Size of Mount	Per Pkg. ½ Doz.	No.	Color	For Prints	Size of Mount	Per Pkg. ½ Doz.
A1	White	5 x 7	7½ x 9½	\$0.81	C1	White	6 x 10	9 x 13	\$1.05
A2	Buff	5 x 7	7½ x 9½	.81	C2	Buff	6 x 10	9 x 13	1.05
B1	White	6½ x 8½	8¾ x 10¾	.93	D1	White	8 x 10	10¾ x 13	1.11
B2	Buff	6½ x 8½	8¾ x 10¾	.93	D2	Buff	8 x 10	10¾ x 13	1.11

## De Luxe Enlargement Mount

White and India Buff stock. All edges deckled. A rich mounter for the favorite enlargement.

No.	Color	For Prints	Size of Mount	Per Doz.	No.	Color	For Prints	Size of Mount	Per Doz.
A1	White	3¼ x 5½	7¼ x 9½	\$0.75	G1	White	6 x 10	10 x 14	\$1.40
A2	India	3¼ x 5½	7¼ x 9½	.75	G2	India	6 x 10	10 x 14	1.40
D1	White	5 x 7	9⅞ x 11⅞	1.00	H1	White	8 x 10	12 x 14	1.50
D2	India	5 x 7	9⅞ x 11⅞	1.00	H2	India	8 x 10	12 x 14	1.50
F1	White	6½ x 8½	10¾ x 12¾	1.20	J1	White	7 x 11	11 x 15	1.56
F2	India	6½ x 8½	10¾ x 12¾	1.20	J2	India	7 x 11	11 x 15	1.56

## Inslip Enlargement Mount—English Grey or Sepia-Buff

No.	For Prints	Size of Mount	Price	No.	For Prints	Size of Mount	Price
AA	3¼ x 5½	7¾ x 9¾	Doz. \$0.90	FF	6 x 10	10⅞ x 14⅞	Doz. \$1.26
BB	4 x 7	8⅞ x 11⅞	Doz. .90	GC	7 x 11	11⅞ x 15⅞	Doz. 1.50
CC	5 x 7	9⅞ x 11⅞	Doz. .90	HH	8 x 10	12⅞ x 14⅞	Doz. 1.50
DD	5 x 8½	9⅞ x 13⅞	Doz. 1.02	JJ	8 x 14	14¼ x 20¼	½ Doz. 1.02
EE	6½ x 8½	11⅞ x 13⅞	Doz. 1.14	KK	11 x 14	17¼ x 20¼	½ Doz. 1.86

## The Drimount—English Grey or Sepia-Buff

No.	For Prints	Size of Mount	Price	No.	For Prints	Size of Mount	Price
AA	3¼ x 5½	7¼ x 9½	Doz. \$0.45	FF	6 x 10	10⅞ x 14⅞	Doz. \$0.66
BB	4 x 7	8¼ x 11¼	Doz. .48	CC	7 x 11	11⅞ x 15⅞	Doz. .78
CC	5 x 7	9¼ x 11¼	Doz. .51	HH	8 x 10	12⅞ x 14⅞	Doz. .78
DD	5 x 8½	9⅞ x 12⅞	Doz. .60	JJ	8 x 14	14 x 20	½ Doz. .66
EE	6½ x 8½	11⅞ x 13⅞	Doz. .63	KK	11 x 14	17 x 20	½ Doz. .81

## The Safety Photo Mailer

Tough Kraft envelope—double scored corrugated board—lock seal. The mailer that insures safe arrival of your prints, and mounted or unmounted enlargements.

No.	Size Card or Print	Outside Size of Mailer	Price per 100
A—	5 x 7 or smaller;	6 $\frac{1}{8}$ x 8 $\frac{1}{8}$ . . . . .	\$ 9.00
B—	9 $\frac{3}{8}$ x 11 $\frac{3}{8}$ or smaller;	10 $\frac{1}{2}$ x 12 $\frac{1}{2}$ . . . . .	15.00
C—	11 $\frac{1}{8}$ x 13 $\frac{1}{8}$ or smaller;	13 x 14 $\frac{1}{8}$ . . . . .	17.50
D—	12 $\frac{1}{8}$ x 15 $\frac{1}{8}$ or smaller;	13 $\frac{3}{4}$ x 16 $\frac{1}{4}$ . . . . .	25.00
E—	17 $\frac{1}{4}$ x 20 $\frac{1}{4}$ or smaller;	18 $\frac{3}{8}$ x 21 $\frac{1}{8}$ . . . . .	35.00

### Stereo Mounts

Size of Mount 3 $\frac{1}{2}$  x 7 . . . . Color, Queen's Grey . . . . Per 100, \$1.30 . . . . Per 50, \$0.65

## Tripods Kodak Metal

The Kodak Metal Tripods, which are light, compact and rigid, have telescoping legs of brass tubing. The three lower sections, finished in nickel, fit into the upper section which is finished in black enamel.

When closed, the full length is, in different models, from 11 $\frac{3}{8}$  to 15 $\frac{1}{2}$  inches—convincing evidence that they are conveniently carried.

There are six models to select from.

The Nos. 1 and 2 have revolving heads, permitting the camera to swing so as to take in the desired view without moving the tripod. They also have straps for holding the legs in place when closed.

The Nos. 1C and 2C have solid heads, but do not have straps for holding legs.



The No. 6 has a special folding head permitting the legs to fold flat. The head contains a patented hinge so that when folded the three legs of the tripod are parallel to each other in the same plane rather than set in the usual triangular form. The result is a narrow shape, which with an extremely short length makes the No. 6, when closed, the easiest to carry of all this easily carried family.

The illustration above shows the No. 6 projecting from a No. 6 Leather Carrying Case.

### Details

	Sections	Length		Weight	Price
		Closed	Extended		
Kodak Metal Tripod No. 0	3	15 $\frac{1}{2}$ inches	39 $\frac{1}{2}$ inches	15 ounces . . .	\$2.75
Kodak Metal Tripod No. 1C	4	15 $\frac{1}{4}$ inches	43 $\frac{7}{8}$ inches	25 $\frac{1}{2}$ ounces . . .	4.00
Kodak Metal Tripod No. 1	4	15 inches	43 $\frac{1}{2}$ inches	24 $\frac{1}{2}$ ounces . . .	4.50
Kodak Metal Tripod No. 2C	5	13 $\frac{3}{4}$ inches	49 $\frac{7}{8}$ inches	26 ounces . . .	4.50
Kodak Metal Tripod No. 2	5	13 $\frac{1}{2}$ inches	49 $\frac{1}{2}$ inches	25 ounces . . .	5.00
Kodak Metal Tripod No. 6	6	11 $\frac{3}{8}$ inches	40 inches	24 ounces . . .	6.50
Leather Carrying Case, for Nos. 0 to 2, inclusive					2.70
Ditto, for No. 6					3.15
Rubber Tips, for Metal Tripod Spurs (per set of 3)					.10

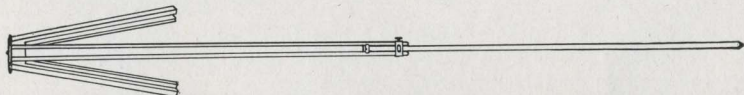
## The Flexo



Two sections. Fixed, non-detachable head. Only clear, straight-grained wood is used in its construction. Length, extended, 53 inches; folded, 29 inches. Weight, 18 ounces.

Price, \$1.50

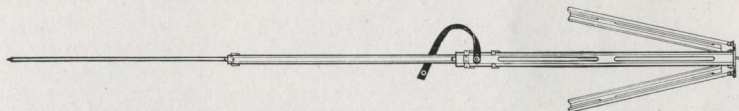
## The Bull's Eye



Two sections. Aluminum revolving head. Made of maple, with brass fittings. For 4 x 5 cameras, or smaller. Length, extended, 42½ inches; folded, 24 inches. Weight, 21 ounces. The two-section tripod that will go into a suitcase.

Price, \$2.00

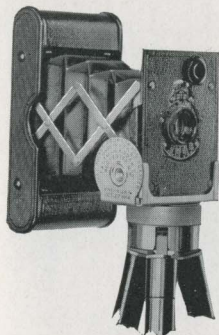
## The Standard



The Feature of this tripod is the automatic locking of the sections when they are extended. Light, compact and rigid. Fixed, non-detachable head. Length, extended, 53½ inches; folded, 21 inches. Weight, 18 ounces. Cherry finish, brass trimmings.

Price, \$3.50

## Vest Pocket Kodak Tripod Adapter



Vest Pocket Kodaks have been compressed into such small space that not even a spare cubic quarter of an inch is available for tripod sockets.

This little device is designed as a substitute for them. It can be affixed in a few turns to a tripod head, to the Optipod or to the Kodapod. Choice of sockets permits placing for vertical or horizontal pictures. The camera may be instantly slipped into the Adapter where it is firmly held by a spring clamp.

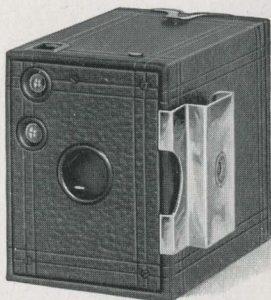
Vest Pocket Kodak Tripod Adapter . . . . . \$0.50

## Brownie Tripod Adapter

The Brownie Tripod Adapter is designed for use on the Nos. 0, 2 and 2A Brownie cameras which are of the box type and not equipped with tripod sockets.

The illustration shows the Adapter attached to the side of the No. 0 Brownie. The two hooked prongs at the side of the Adapter are inserted in the narrow space between the front board and the camera frame. For taking horizontal pictures it is placed in the position illustrated and for taking vertical pictures it is inserted at the bottom instead of the side.

The camera may then be attached to a tripod head or to the Optipod or Kodapod (illustrated below) by merely turning the tripod screw, into the threaded hole in the Adapter.

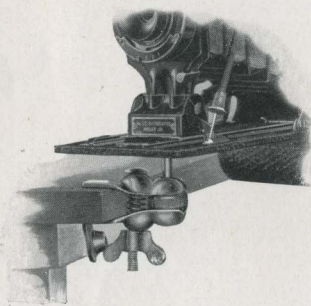


Brownie Tripod Adapter . . . . . \$0.25

## The Optipod

The Optipod is a combined tripod head and clamp which may be used effectively as a tripod when clamped to a chair, table, automobile, motorcycle, or any substantial object. It is small and light, slipping readily into the pocket and may be carried without inconvenience.

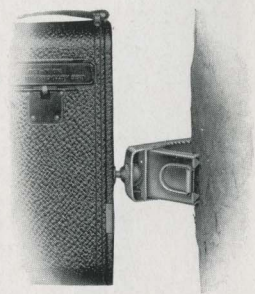
When used in connection with a tripod, the Optipod gives the advantage of its ball and socket joint, permitting the camera to be tilted to any desired angle. This feature is especially desirable when photographing objects at close range and when it is impossible to place a tripod alone, in the desired position.



The Optipod . . . . . \$1.25

## The Kodapod

The little Kodapod—which is carried easily in the pocket—takes the place of a tripod, when a tree, fence, or similar object is near at hand. Its jaws have a bulldog grip that holds the wood like a vise, and likewise the Kodak, firmly in position. By means of a clamping screw, the camera may be adjusted to the correct vertical or horizontal position. It fits any standard tripod socket.

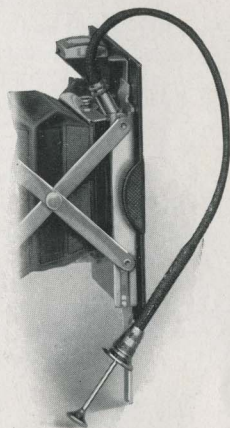


The Kodapod . . . . . \$1.75



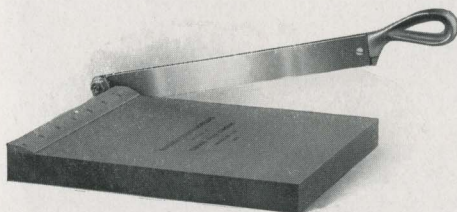
## Vest Pocket Kodak Cable Release Attachment

Vest Pocket Kodaks are so compact that there is no space for a cable release. But for those who prefer it, a cable release attachment is made. This consists merely of a nickeled plate attached by a screw to the back of the front board. The plate contains a socket into which the cable release is screwed. The attachment is especially valuable for those who wish to use the Kodak Self Timer with their Vest Pocket Kodaks.



Vest Pocket Kodak Cable Release Attachment (No.20) . . \$0.50

## Kodak Trimming Boards



Made of hard wood, with natural finish, have fine quality steel blades and are fitted with rule.

No. 1, capacity, 5 x 5 inches . \$0.75  
No. 2, capacity, 7 x 7 inches . 1.00

## Kodak Print Roller

The best roller constructed for amateur use. Has two 6-inch rubber rollers and finely nickeled frame.

Kodak Print Roller . . . . . \$1.00



## Flexo Print Roller



A thoroughly practical roller for mounting. Has 4-inch rubber roller and black enamel frame.

Flexo Print Roller . . . . . \$0.35

## “How to Make Good Pictures”

A practical and profusely illustrated book for the amateur that covers in a simple, understandable way every phase of photography that he is likely to be interested in. 172 pages.

“How to Make Good Pictures” . . . . . \$0.40

### Kodak Film Clip

This is a new clip which replaces the No. 2 Junior. It is of entirely new construction designed to secure the maximum amount of grip with its two jaws. Having a width of two inches and a firm grip which prevents the film from slipping, it is particularly adapted for use with large size film but is useful for small film as well. Made in one size only.



Kodak Film Clip . . . . . \$0.30

### Kodak Junior Film Clip No. 1

The No. 1 clip is the most practical for tray development or drying of films. Two teeth in jaw to prevent film from slipping. One size only.

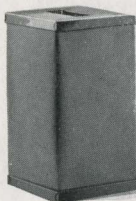


Kodak Junior Film Clip No. 1 . . . . . \$0.12

### Eastman Film Developing Clip

A thoroughly dependable clip. Made in two sizes and nickel-plated.

3½-inch, per pair . . . . . \$0.25  
 5-inch, per pair . . . . . .40



### Kodak Candle Lamp

This clever little lamp is collapsible and can be packed into very small space when not in use. It is made of special, tested ruby fabric, bound in metal frames and gives a strong, safe light for the dark room.

Kodak Candle Lamp . . . . . \$0.40  
 Extra Candles for same, per dozen . . . . . .40

### Kodak Dark Room Lamp

The Kodak Dark Room Lamp is oil burning and is fitted with both orange and ruby glass. It has an unusually broad wick regulated from the outside and gives a soft, steady light for the dark room.

No. 2 Kodak Dark Room Lamp . . . . . \$1.25



## Kodak Safelight Lamp

The Kodak Safelight Lamp is ideal for all dark room uses, whether the work of the beginner, the advanced amateur, or the professional.

The lamp is supplied with a 5 x 7, Series 1, Safelight for use with film or plates, not highly color sensitive. Safelights of other series may be obtained, if desired, for more advanced work. It is made of metal; neatly finished in a warm tone of brown.

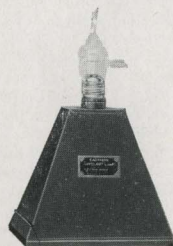
The lamp is supplied complete, with electric fittings excepting electric bulb, including besides the safelight 4½ feet of electric light cord.



Kodak Safelight Lamp . . . . .	\$3.25
Extra Safelight, 5 x 7, any series . . . . .	.75

## Eastman Safelight Lamp

This convenient new dark room lamp hangs from an electric cord or fixture and throws the light from a 10 watt bulb directly downward over the work table. Supplied with a 5 x 7 Safelight, Series 00, for use with developing-outer papers, unless otherwise ordered. Strongly constructed of metal.

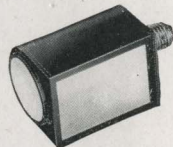


Eastman Safelight Lamp, without bulb . . . . .	\$3.00
Extra Safelight, 5 x 7, any series . . . . .	.75

## Brownie Safelight Lamp

But little larger than the electric bulb it holds, the Brownie Safelight Lamp screws into an electric socket.

It is made of metal, neatly japanned; has circular safelight in the end and side safelight as well. Both safelights are the regular Series 1, and removable so that other series may be used, if desired. A 15 Watt Mazda Lamp is used, but is not supplied.



Brownie Safelight Lamp . . . . .	\$1.50
Extra Circular End Safelight (any series), each . . . . .	.25
Extra Rectangular Safelight (any series), each . . . . .	.40

## Safelights

### For Safelight Lamps

- SERIES 00—Yellow light, for use with gaslight papers.
- SERIES 0—Bright orange light, for use with bromide paper and lantern plates.
- SERIES 1—Orange safelight, for use with films or plates not highly color sensitive.
- SERIES 2—Safelight, for extra rapid orthochromatic plates sensitive to green but not red.
- SERIES 3—Green safelight, for use with red-sensitive panchromatic plates.
- SERIES 4—Bright green safelight, for use with ordinary plates, for those who cannot use a red light. Not safe for orthochromatic plates.

# Tested Chemicals



Certainty in making negatives and prints depends as much on the quality of your chemicals as on any other one thing. All Kodak chemicals are tested both photographically and for purity before the E. K. C. tested seal is allowed to go upon them.

Eastman Chemical Outfit consists of M. Q. and Special Developers, Intensifier, Reducer and Velox Re-developer . . . . .	\$0.40
Eastman Special Developer Powders, per package of 5, in sealed glass tubes . . . . .	.30
Eastman M. Q. Developer, per package of 5 tubes . . . . .	.30
Eastman Hydrochinon Developer Powders, per 1/2 dozen . . . . .	.30
Ditto, per package of 5 powders, in sealed glass tubes . . . . .	.30
Eastman Pyro Developer Powders, per 1/2 dozen . . . . .	.25
Ditto, per package of 5 powders, in sealed glass tubes . . . . .	.25
Eastman Tropical Developer, 5 powders, in sealed glass tubes . . . . .	.40
Tozol, per 1-ounce bottle . . . . .	.45
Elon, per 1 ounce . . . . .	.56
Kodolon, per 1 ounce . . . . .	.47
Hydrochinon, per 1-ounce can . . . . .	.22
Eastman Permanent Crystal Pyro, per 1-ounce bottle . . . . .	.27
Velox Re-developer Tubes, package of 12 tubes . . . . .	.84
Hyposulphite of Soda, granular, per pound . . . . .	.18
Alum, powdered, per pound . . . . .	.20
Kodak Acid Fixing Powder, per pound package . . . . .	.25
Ditto, per 1/2-pound package . . . . .	.15
Ditto, per 1/4-pound package . . . . .	.10
Eastman Intensifier, glass tube, per tube . . . . .	.15
Eastman Reducer, per box of 5 tubes . . . . .	.50
Eastman Opaque No. 1, per tube . . . . .	.25
Potassium Bromide, granular, per ounce . . . . .	.10
Acetic Acid, 28 per cent pure, per 1-pound bottle . . . . .	.35
Citric Acid, 4-ounce bottle . . . . .	.38
Eastman Tested Carbonate of Soda (desiccated), per 1-pound bottle . . . . .	.40
Eastman Tested Sulphite of Soda (desiccated), per 1-pound bottle . . . . .	.45

For Velox preparations, see page 49. For Solio preparations, see page 50.  
For Tank Developer Chemicals, see page 43.

## Miscellaneous

Cable Release (except Vest Pocket, see page 61), each . . . . .	\$0.35	Rubber Focusing Cloth, per yard . . . . .	\$1.00
Eastman Special Squeegee, 8-inch . . . . .	.85	Eastman Spotting Colors consist of three colors, black, white and sepia, per set . . . . .	.25
Hard Rubber Stirring Rod . . . . .	.30	Ferrotypc Plate, 10 x 14, light . . . . .	.20
Finger Tips, set of 3 . . . . .	.15	Ferrotypc Plate, 10 x 14, heavy . . . . .	.30

## Terms

The prices in this catalogue are strictly net, except to regular dealers who carry our goods in stock. THESE PRICES ARE, HOWEVER, SUBJECT TO CHANGE WITHOUT NOTICE. For the convenience of our customers, we recommend that they make their purchases from a dealer in photographic goods, as by so doing they can save both time and transportation charges.

EASTMAN KODAK COMPANY, Rochester, N. Y.



# “KODAK”

Is the registered and common-law Trade Mark of the Eastman Kodak Company and cannot be rightfully applied except to goods of their manufacture. When a dealer tries to sell you under the Kodak name, a camera or films or other goods not of their manufacture, you can be sure that he has an inferior article that he is trying to market on the Kodak reputation

*If it isn't an Eastman, it isn't a Kodak*

Granite Drug Company  
11th East and 21st South Streets  
Salt Lake City, Utah