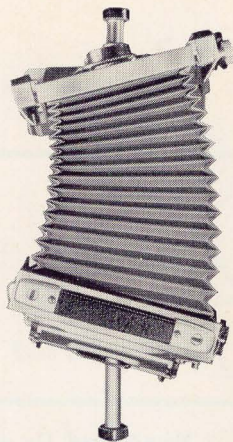


*P*resenting a distinguished new camera

**KODAK MASTER
VIEW CAMERA** *4x5*

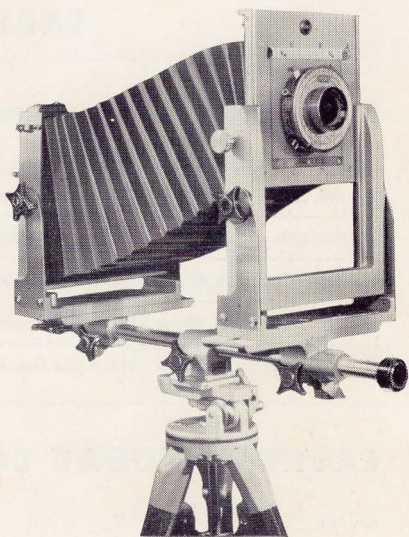
*A versatile
new tool
for the
Professional*

Features



Horizontal Swing Both front and back of the camera can be swung 12 degrees in either direction on a vertical axis for horizontal distortion correction. This adjustment is helpful in correcting diverging lines and increasing depth of focus.

Rising-Falling Front This feature changes the lens position in the vertical plane for the same purposes as the transverse slide in the horizontal. Total possible rise, 3 inches; fall, 1 inch.



Transverse or Horizontal Slide When an obstruction prevents centering the camera on the subject, the transverse slide makes it possible to move the film and the lens up to $\frac{7}{8}$ of an inch in either direction. Both the front and the back have this adjustment.

Bellows The bellows is made of tough, gray material. A 19-inch monorail permits a bellows extension of 15 inches.

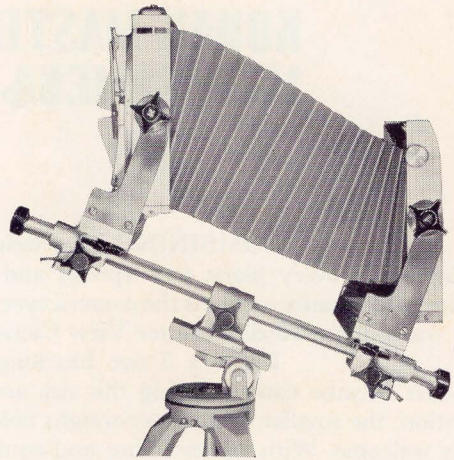
Interchangeable Metal Lens Boards Large enough to handle even a 12-inch lens, these boards can be changed quickly and easily.

Film Holders Standard film or plate holders as well as film pack adapters will fit the camera back.

Dimensions The camera is $11\frac{1}{4}$ inches high, 8 inches wide, and 19 inches long.

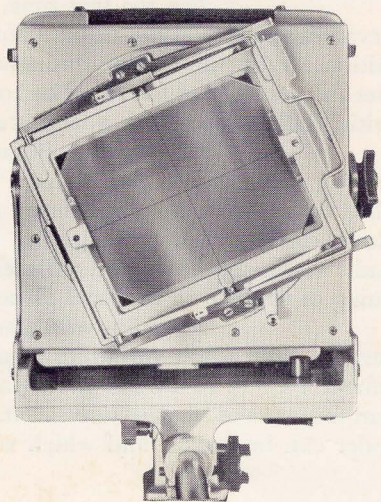
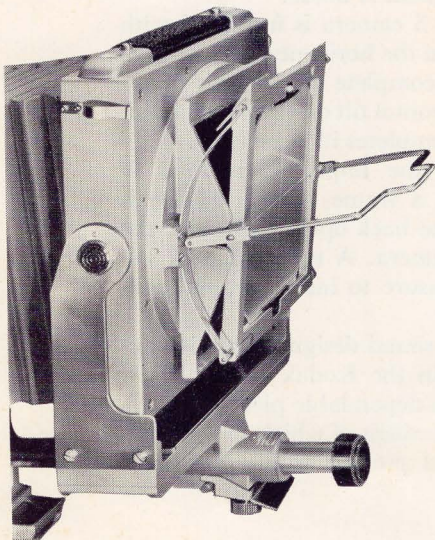
Carrying Case Supplied in a velour-lined gray carrying case, the camera is ready for use at all times. Space is provided for 12 film holders, a film pack adapter, focusing cloth, extra lenses, accessories such as flash gun, and reflector.

Ground Glass Frame Release By pulling down a frame release handle, all tension is relieved and the back opens to receive the film holder. Thus there is no danger of jarring the camera, and more pressure on the holder can be employed.



Vertical Swing To correct distortion, or to increase depth of focus in the vertical plane, the front and back can be swung 30 degrees in either direction on a horizontal axis. Spirit levels, mounted on the top of the camera back, indicate when the camera is level.

Revolving Back In addition to the convenience of a rotating back in changing from a vertical to a horizontal format, the back on the Kodak Master View Camera can be used at any position throughout a full 360° circle.



KODAK MASTER VIEW CAMERA 4x5

COMBINING light weight with great rigidity, adjustments in every plane with speedy and easy operation, functional design with beauty—here is the camera every professional photographer has wanted, the Kodak Master View Camera 4 x 5.

The 4 x 5 size has long been favored by photographers because cameras using this size are easily portable. When on location, the smaller and lighter-weight holders and lenses are particularly welcome. With modern films and equipment, 4 x 5 negatives can be enlarged many diameters and still retain professional quality.

This new camera is a fine, well-constructed piece of equipment, capable of answering every demand the professional places upon it. Its frame of satin finished aluminum, its tough, gray bellows, its large, easy-to-hold control knobs, its functional design, all combine to form an instrument every lover of good equipment will treasure.

The Kodak Master View Camera 4 x 5 has a mono-rail track 19 inches long. Both the front and back can be racked in either direction, by turning the large knobs in the conventional manner, or by releasing a clutch and sliding them forward or backward. A flip of the finger re-engages the clutch for fine focusing. The front, in addition to the back, has horizontal and vertical swings and transverse slide. These adjustments are pivoted in the middle of the camera front or film plane as the case may be, thus there is no change in image size in the center of the image when an adjustment is made.

For the first time, a 4 x 5 camera is furnished with a revolving back that can be used not just in the horizontal and vertical positions, but at any point throughout a complete circle. This eliminates the necessity of a rocking bed or horizontal tilt on the tripod head. A rising-falling front with a large travel completes its versatility.

Of unusual interest is the improved method of releasing the ground glass frame. When a frame release handle is pulled down, all tension is relieved and the back opens to receive the holder, easily and without jarring the camera. A simple flip of the handle closes the back with sufficient pressure to insure proper positioning of the film in the focal plane.

Precision workmanship, sound design, attractive appearance, and great versatility combine in the Kodak Master View Camera 4 x 5 to insure the photographer a dependable piece of equipment for years of hard service—truly a camera of which the photographer can be proud, and which will lend prestige to his profession.

Lenses and Accessories



Ciné-Kodak Tripod
Recommended as a sturdy, lightweight stand for the Master View Camera. It is equipped with a tilt-top head which also revolves.



Lens Boards Extra interchangeable metal lens boards are available. They are supplied with a drilled pilot hole, and are strong but light in weight.



Kodak Combination Lens Attachments Filters, Pola-Screens, and Lens Hoods are available to fit all Kodak Ektar Lenses in sizes as shown in the table below.

3¼ x 4¼ back The camera can be supplied with a back for 3¼ x 4¼ film for those photographers who prefer this size. It will be of particular interest to those making standard lantern slides either in color or black-and-white. The back is also available as an accessory for existing cameras.

A FULL LINE of Kodak Ektar Lenses is available as shown below. All are Lumenized—hard-coated on all air-glass surfaces to reduce reflections and improve tone separation in the shadows. They are highly corrected and are ideally suited for color photography as well as black-and-white. Negatives and color transparencies made with these lenses can be expected to have superb sharpness and clarity.

TABLE OF LENSES

| LENS | SHUTTER | Marked Apertures | Back Focus | Kodak Adapter Ring Size | Kodak Lens Attachment Series | Diameter of Lens Board Mounting Hole | Over-all Length of Lens Mount |
|--------------------------|-------------------------|------------------|------------|-------------------------|------------------------------|--------------------------------------|-------------------------------|
| Kodak Ektar f/4.7 127mm | Kodak Flash Supermatic | f/4.7 to f/32 | 4¾ in. | 1½ in. | VI | 1½ in. | 1¾ in. |
| Kodak Ektar f/7.7 8-in. | Kodak Flash Supermatic | f/7.7 to f/45 | 7½ in. | 1¾ in. | VI | 1½ in. | 1¾ in. |
| Kodak Ektar f/6.3 8½-in. | No. 3 Ilex Acme Synchro | f/6.3 to f/45 | 7¾ in. | 1¾ in. | VII | 2¾ in. | 1¾ in. |
| Kodak Ektar f/6.3 10-in. | No. 4 Ilex Acme Synchro | f/6.3 to f/45 | 9½ in. | 2½ in. | VIII | 2¾ in. | 2¼ in. |
| Kodak Ektar f/6.3 12-in. | No. 4 Ilex Acme Synchro | f/6.3 to f/45 | 11 in. | 2½ in. | VIII | 2¾ in. | 2½ in. |

EASTMAN KODAK COMPANY, ROCHESTER 4, N. Y.

