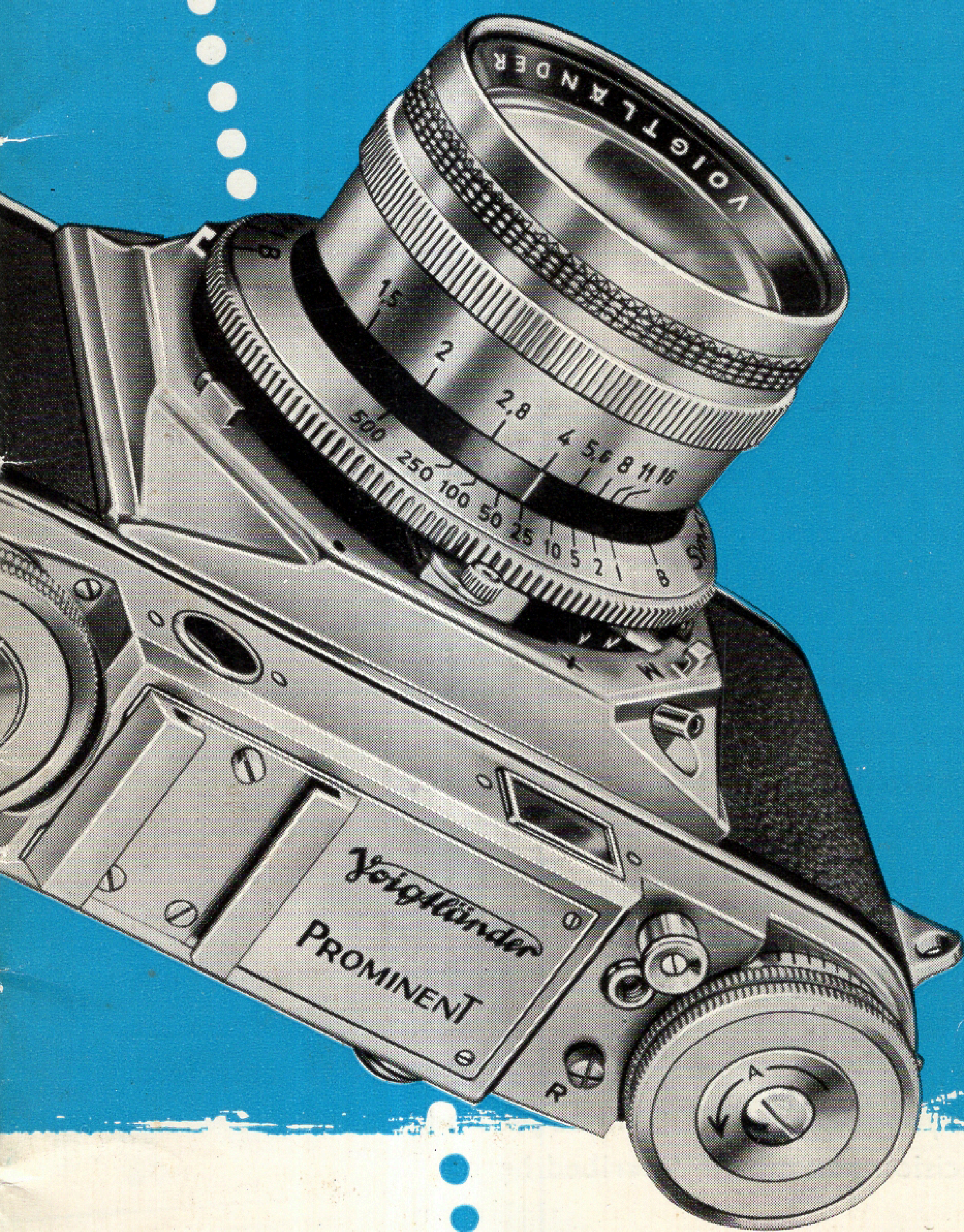


The  
**PROMINENT**  
and its **SYSTEM**



**Voigtlander**



## More than Just a Camera

Now the PROMINENT with its interchangeable lenses and numerous accessories offers you a comprehensive **camera system**, and enables you to cover an immense range of photographic subjects with a single camera. The press photographer, the professional, the scientist as well as the medical photographer, the serious amateur and the engineer — all of them will find in the PROMINENT with its supplementary gear a versatile outfit which will successfully master the most difficult assignments and satisfy the highest demands.

This precision outfit is the result of long years of experience in camera design. For when the first mathematically computed photographic lens appeared in 1840, barely a year after the invention of photography itself, it was a Voigtländer lens. It had what was then an unheard-of maximum aperture of  $f/3.7$ . Shortly afterwards the first all-metal camera in the world was introduced; that, too, was a Voigtländer product. And ever since those pioneering days Voigtländer has remained in the lead of photographic progress.

The most recent creation is now the PROMINENT system. Examine at leisure the versatility and photographic scope of this miniature camera, for in this catalogue we can only briefly hint at its manifold applications. Already the basic outfit offers such outstanding value and embraces such countless possibilities that you can acquire the supplementary units of the system as and when required.

Your photo dealer and the firm of Voigtländer are readily at your disposal with any additional information you may wish to have once you have read this prospectus. And your photo dealer will be pleased to show you all the precision equipment described here:

## The Voigtländer PROMINENT System

For All Occasions —  
in black-and-white or colour:

FAMILY SNAPSHOTS  
TRAVEL PICTURES  
LANDSCAPES

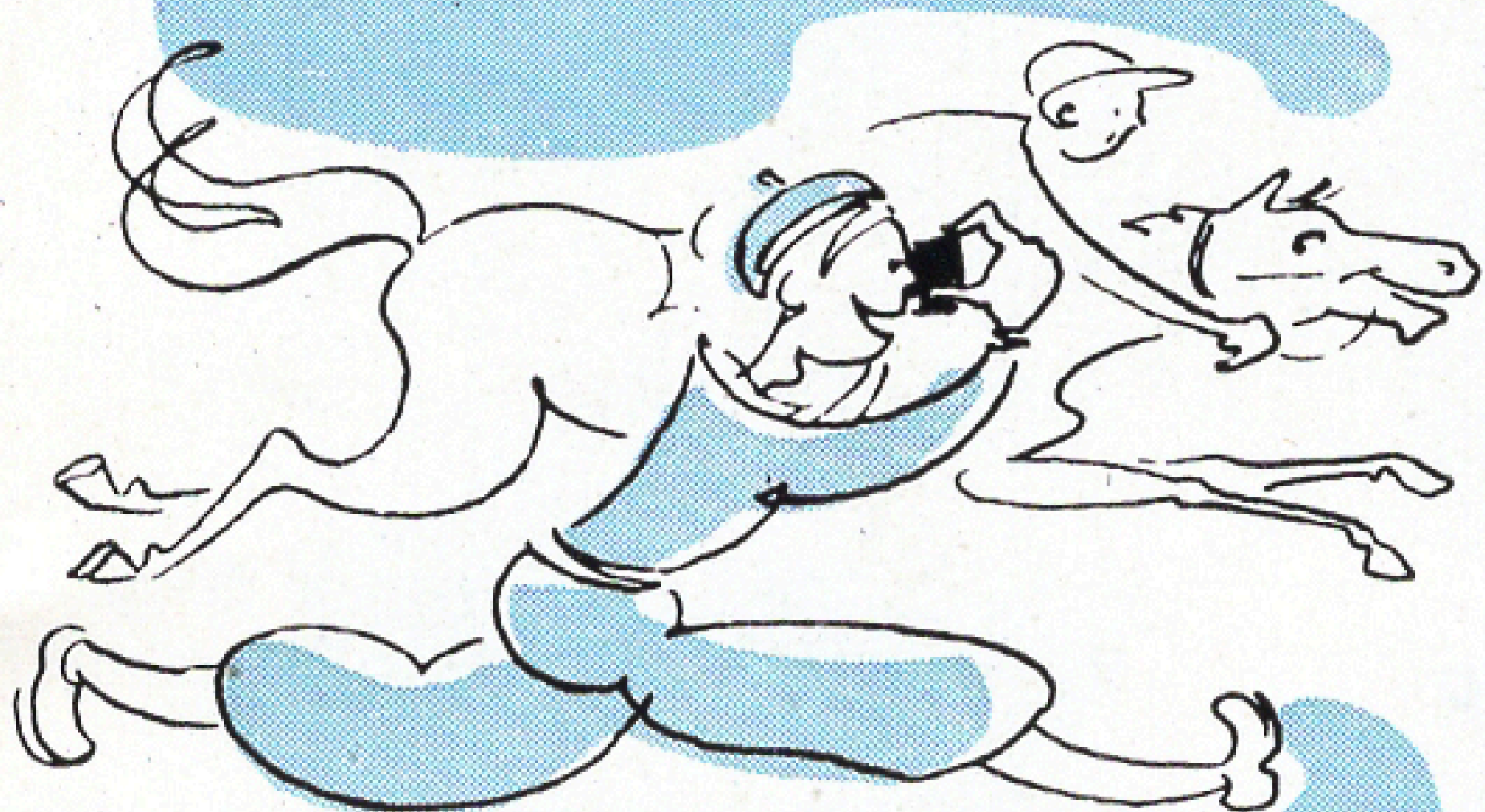
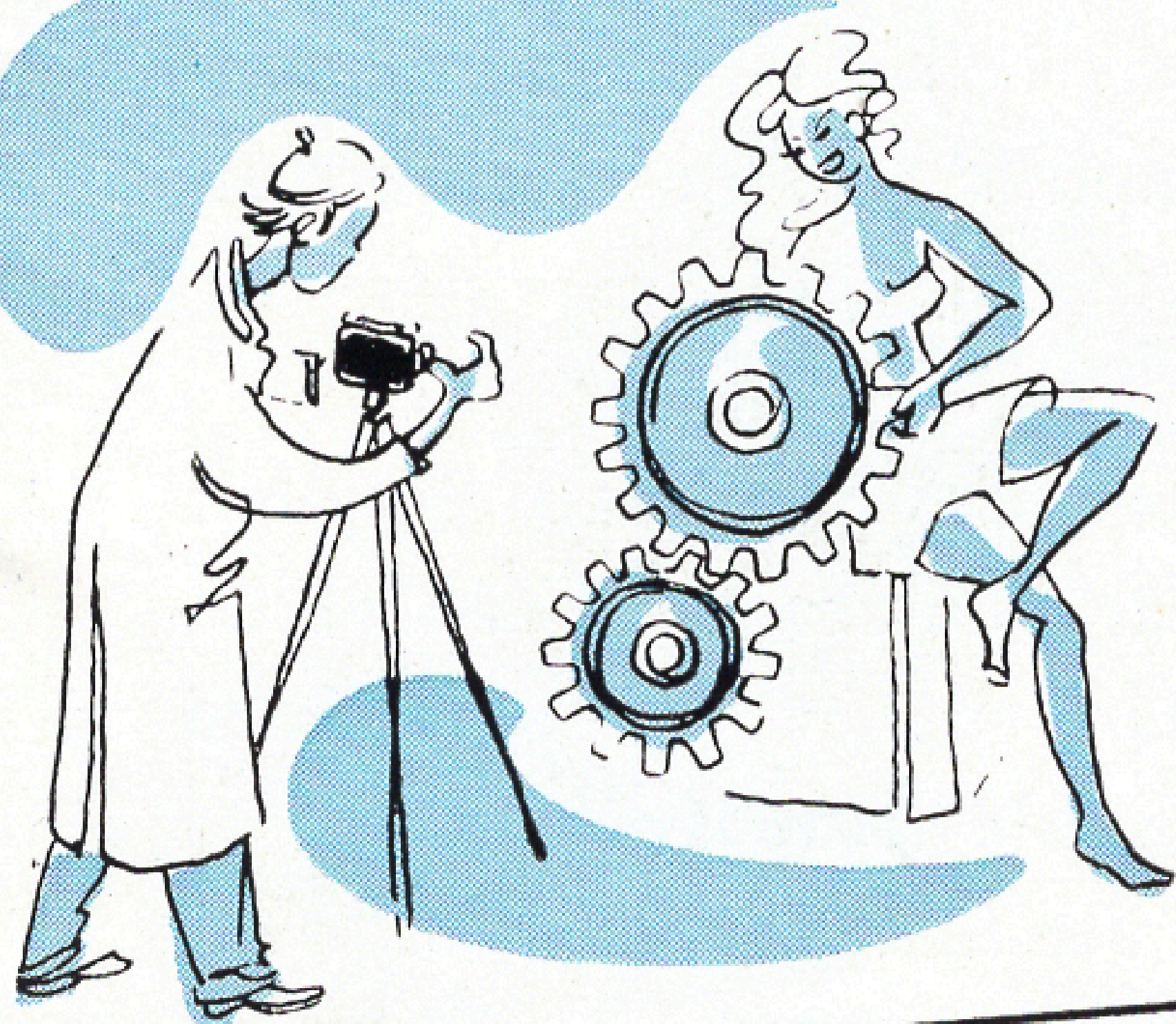
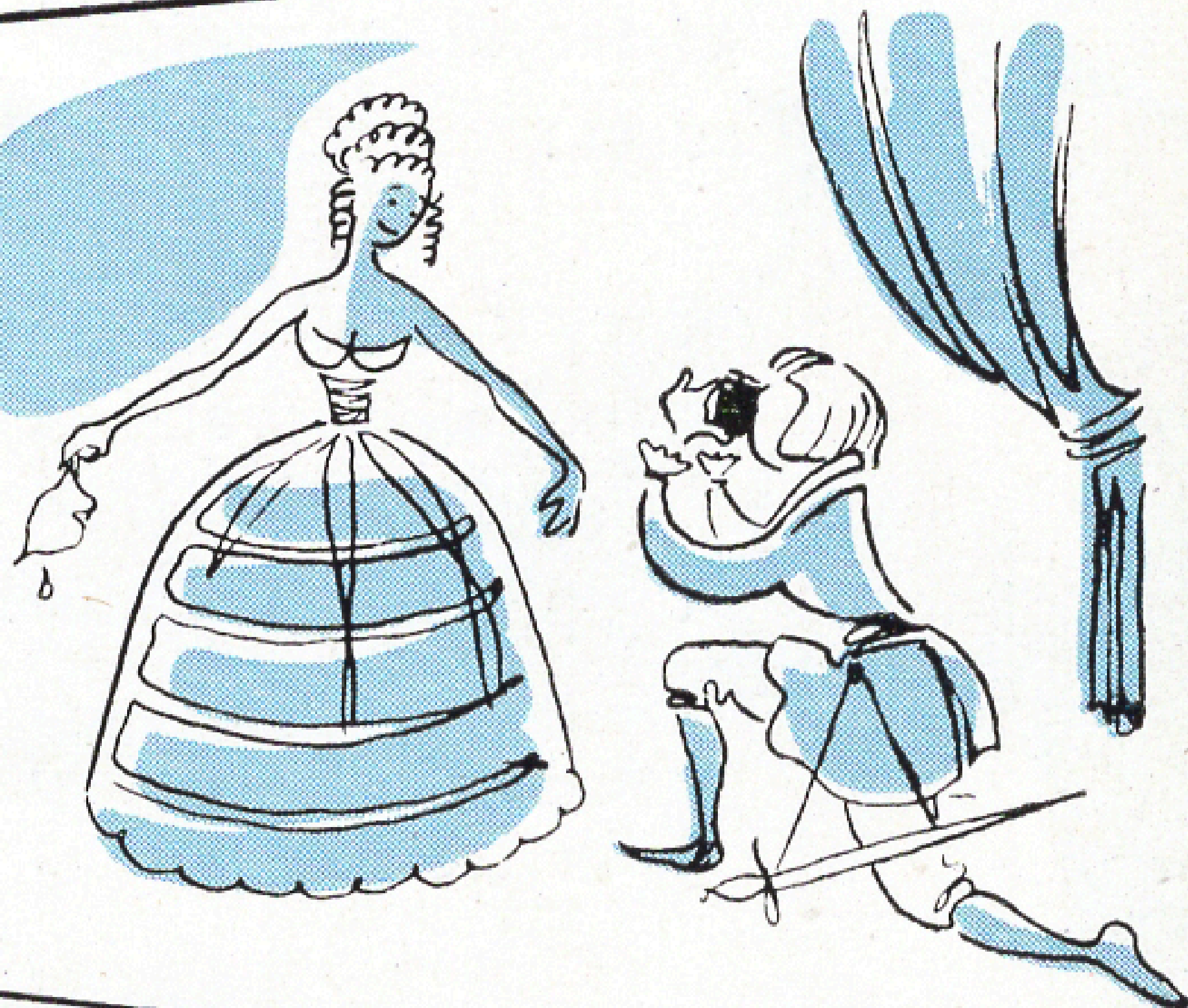


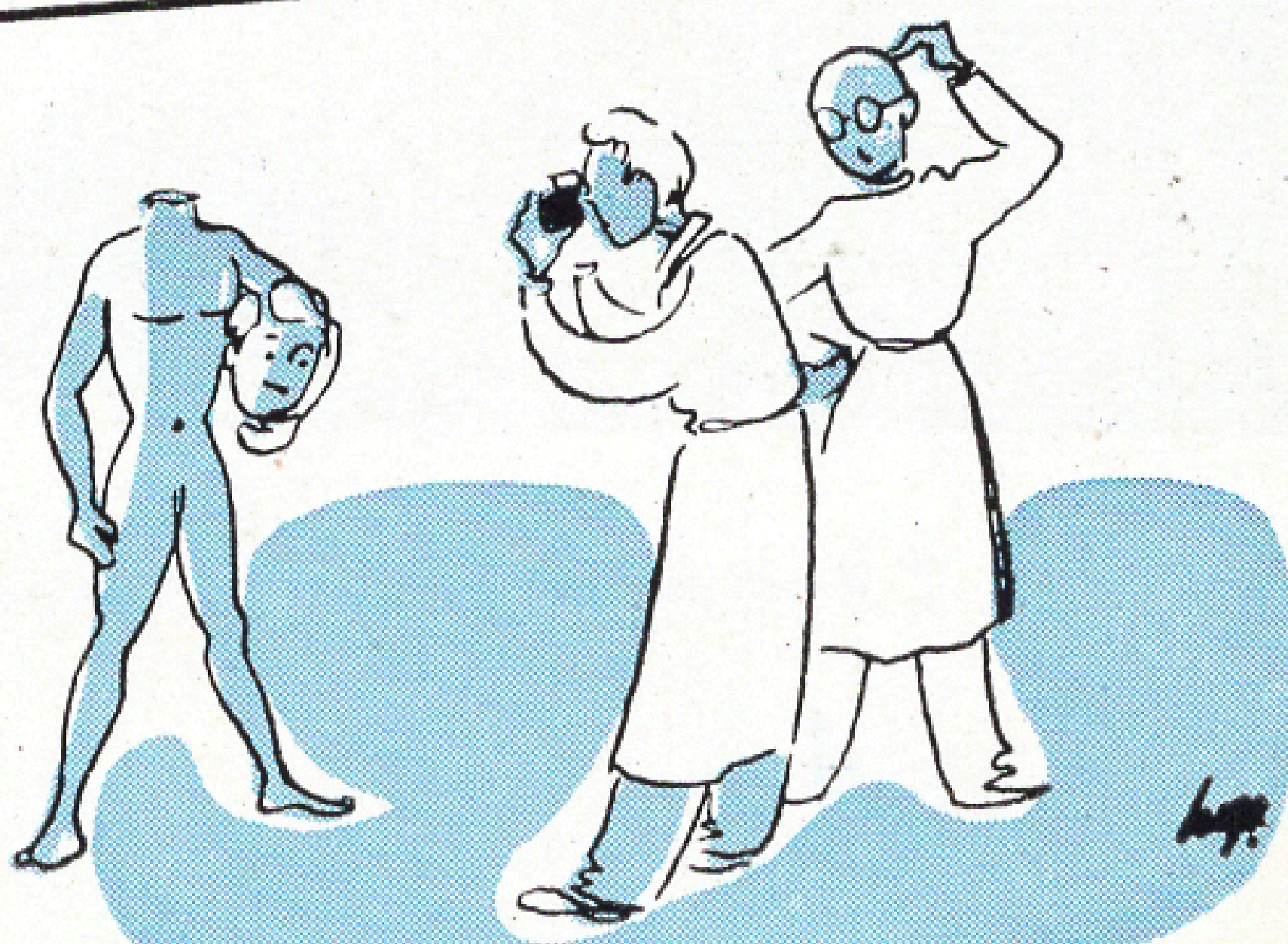
PHOTO-REPORTAGE  
SPORTS

FASHION PHOTOGRAPHY  
THEATRE  
PORTRAITS



ARCHITECTURE  
ADVERTISING  
PHOTOGRAPHY  
INDUSTRIAL WORK

SCIENCE  
MEDICAL PHOTOGRAPHY



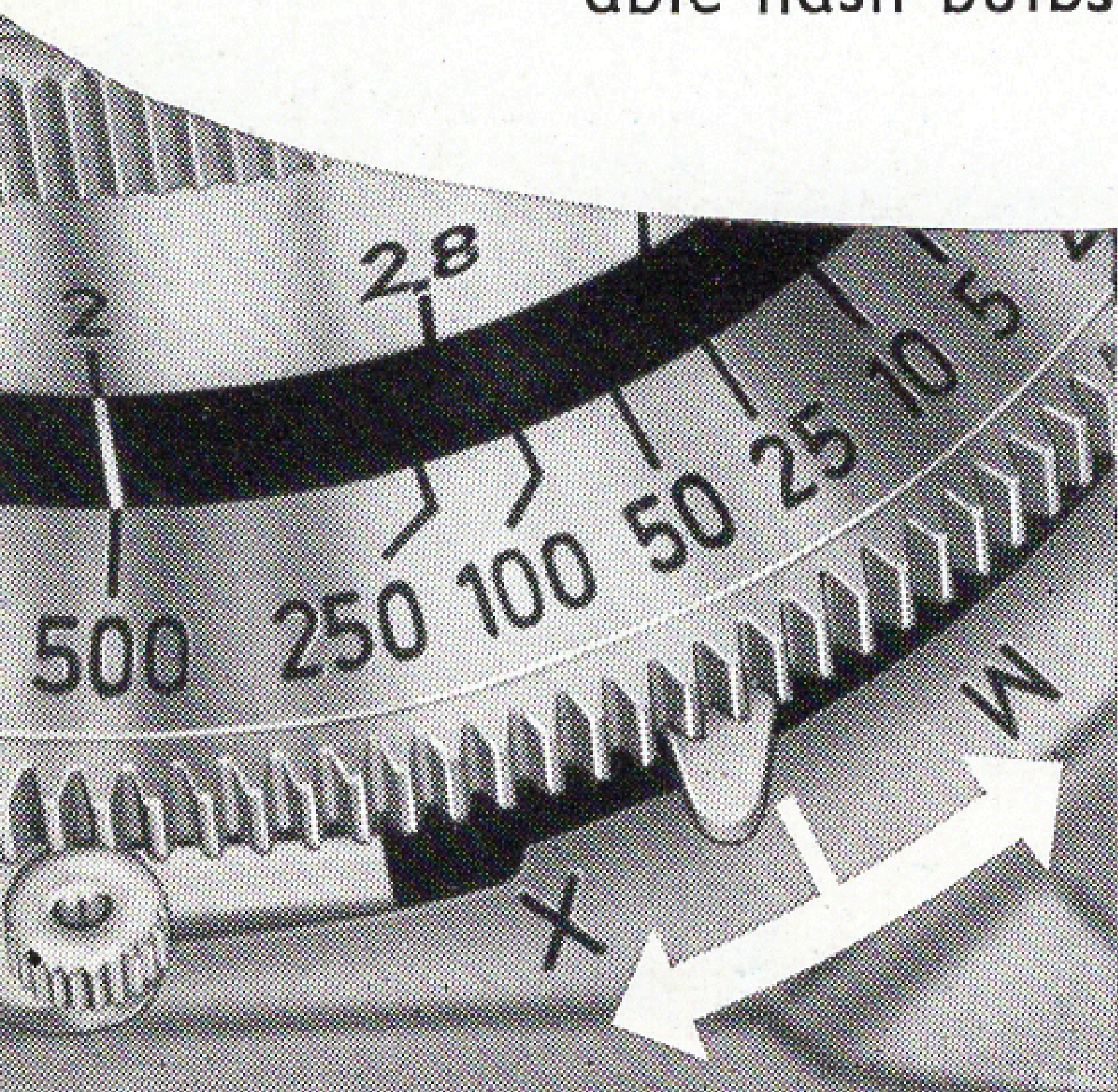
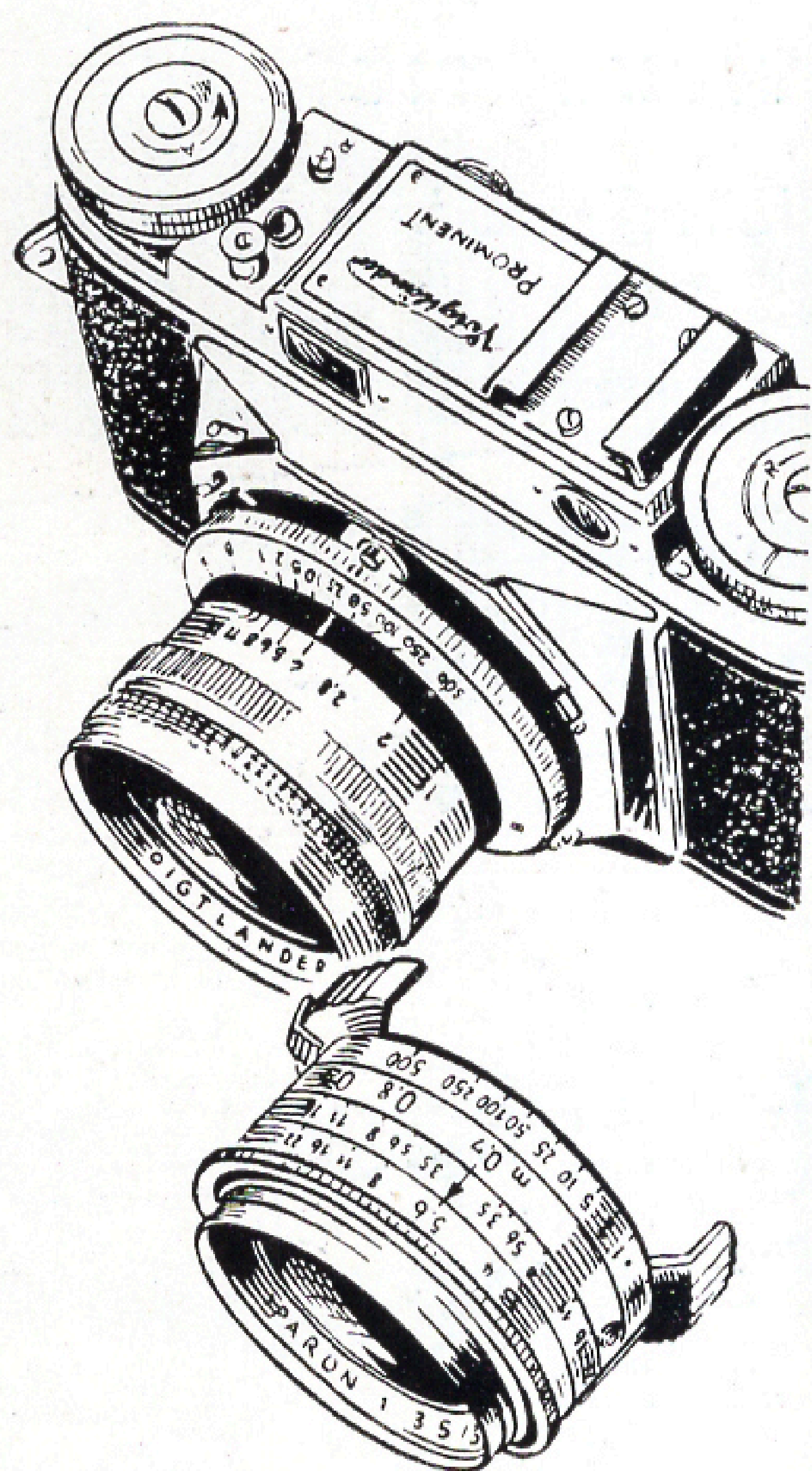
## Two Important Constructional Principles

are ideally combined in the PROMINENT: **interchangeable lenses**, and a **diaphragm shutter**.

We need not go further into the advantages of interchangeable lenses at this point; some remarks on the subject will be found on pages 8 and 9. With the growing popularity of flash photography the diaphragm shutter has, however, in the last few years become increasingly important.

The SYNCHRO-COMPUR diaphragm shutter of the PROMINENT permits flash shots under **all** conditions and ensures:

- ★ even and simultaneous illumination of the whole negative area;
- ★ optimum utilization of the light output of the flash;
- ★ use of all types of flash including electronic units and class F and class M flash bulbs, as well as flash capsules;
- ★ speed synchronization of electronic flash and all suitable flash bulbs up to a shutter speed of  $\frac{1}{500}$  second.



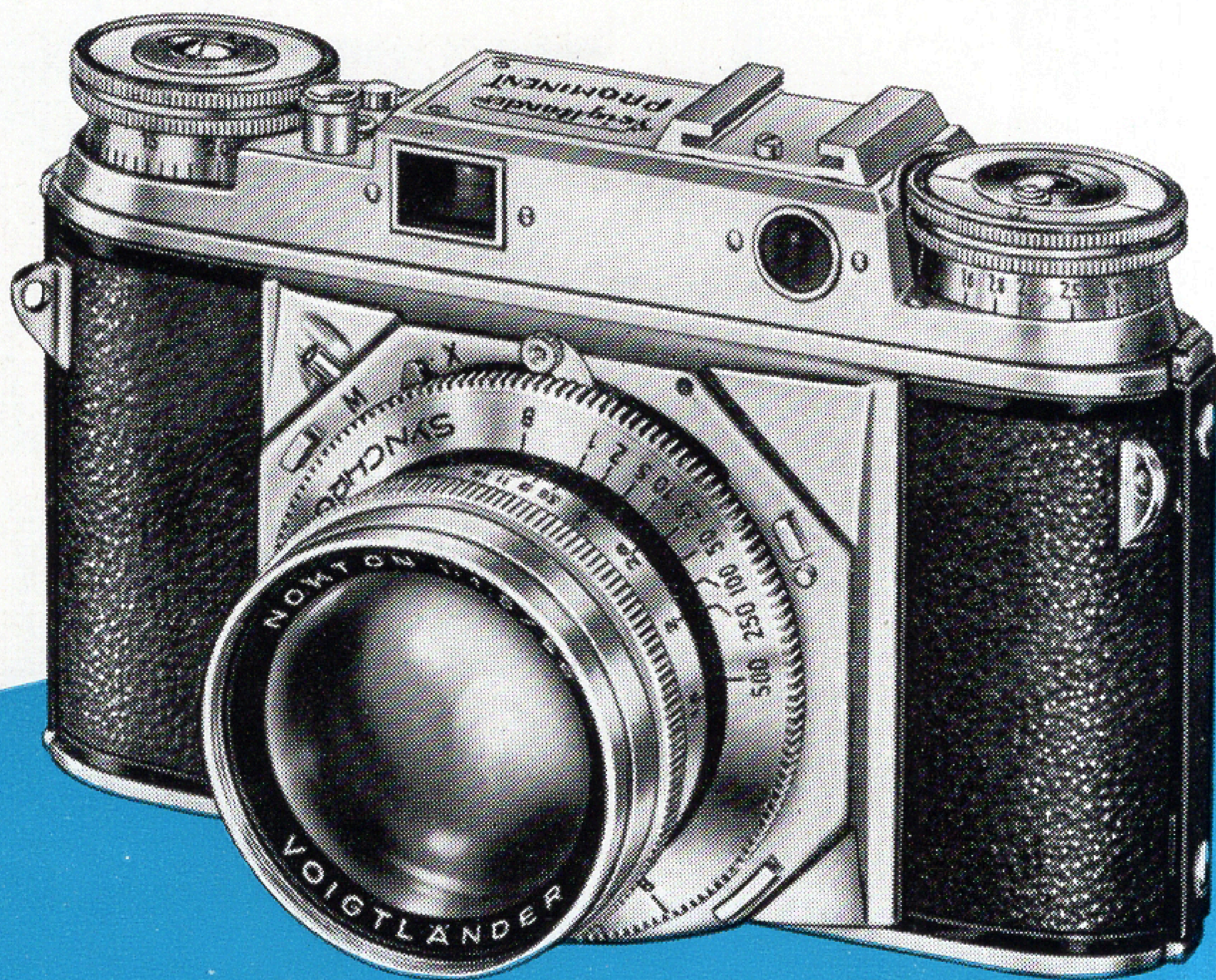
Moreover, the PROMINENT employs a special model of the SYNCHRO-COMPUR shutter which is fitted with double blades in order to protect the film absolutely against any light leakage when changing lenses.



PROMINENT with ULTRON f/2; Gevacolor Reversal Film R 5

## Other Features

The rangefinder is combined in one eyepiece with the viewfinder and is coupled with the lens. The film transport is coupled with the film counter and shutter tensioning mechanism, thus eliminating double exposures or blank frames. The built-in self-timer allows you to get to your place in the photograph or, with time exposures, to release without a shake. Furthermore, there is, close to the distance scale, the depth of field indicator revealing at a glance the zone of sharpness with any aperture. The film indicator will help you to remember the sort of film actually in your camera. This is especially useful when changing often from black-and-white to colour or from one film sensitivity to another.



The most important part of every camera is, however, the lens.

## A New Standard of Performance

in photographic optics has been achieved by the Voigtländer series of high-class lenses. The design of this series has incidentally become a milestone of modern optical history.

When after 1945 Voigtländer, like many other firms, had to start again from scratch, they kept one aim firmly in view from the very beginning. This was the production of lenses which would firstly meet the growing demands for big enlargements from miniature negatives, and secondly satisfy the stringent requirements of colour photography. Already at that time it was clearly realized that these two fields — miniature photography and colour — would in a few years enormously increase in popularity.

The first lens resulting from these new developments appeared in 1949 as the COLOR-SKOPAR  $f/3.5$ , which to-day is one of the standard lenses of the PROMINENT. Soon other lenses followed. All of them were distinguished by features which hitherto had not been thought possible in a normal photographic lens:

- ★ Outstanding definition of high-speed lenses to the very edges of the image at full aperture.
- ★ Appreciably higher image contrast even with large aperture lenses (resulting in increased half-tone resolution).
- ★ Excellent colour correction.

In practice this high standard of image quality of the new lenses means that:

- ★ the limit of enlargement of the negatives is set no longer by the lens, but only by the film emulsion;
- ★ the pictures are markedly sharper and more brilliant; and
- ★ colour shots are possible with astoundingly faithful colour rendering.

Such lens performance could, however, only be achieved by fundamentally new methods. Fresh ideas were required to make the procedures of computation in use up to then more accurate. A great deal of original research therefore produced data for new and more exact calculations. Thus after 1945 the scientific staff at Voigtländer first started to work with these methods of computation, which in conjunction with completely new optical glasses led to the series of high-class lenses. To-day these lenses are covered by over fifty Voigtländer patents in many countries.

The few years since the introduction of the lenses were sufficient to carry their fame all over the world. They are in the forefront of optical design and quality — with the standard focal lengths of the COLOR-SKOPAR  $f/3.5$ , the ULTRON  $f/2$ , and the NOKTON  $f/1.5$ , as well as with the wide-angle SKOPARON  $f/3.5$ , and the TELOMAR  $f/5.5$  and DYNARON  $f/4.5$  telephoto lenses.

Voigtländer's view ahead in 1945 was confirmed by the developments of the following years: the increased popularity of miniature photography and the growth of colour. Nor is this development by any means finished.

In fact, the lenses of the Voigtländer high-class series are in many respects far ahead of the technical level of the usual film materials. That makes them particularly valuable.

## *It Depends on the Angle,*

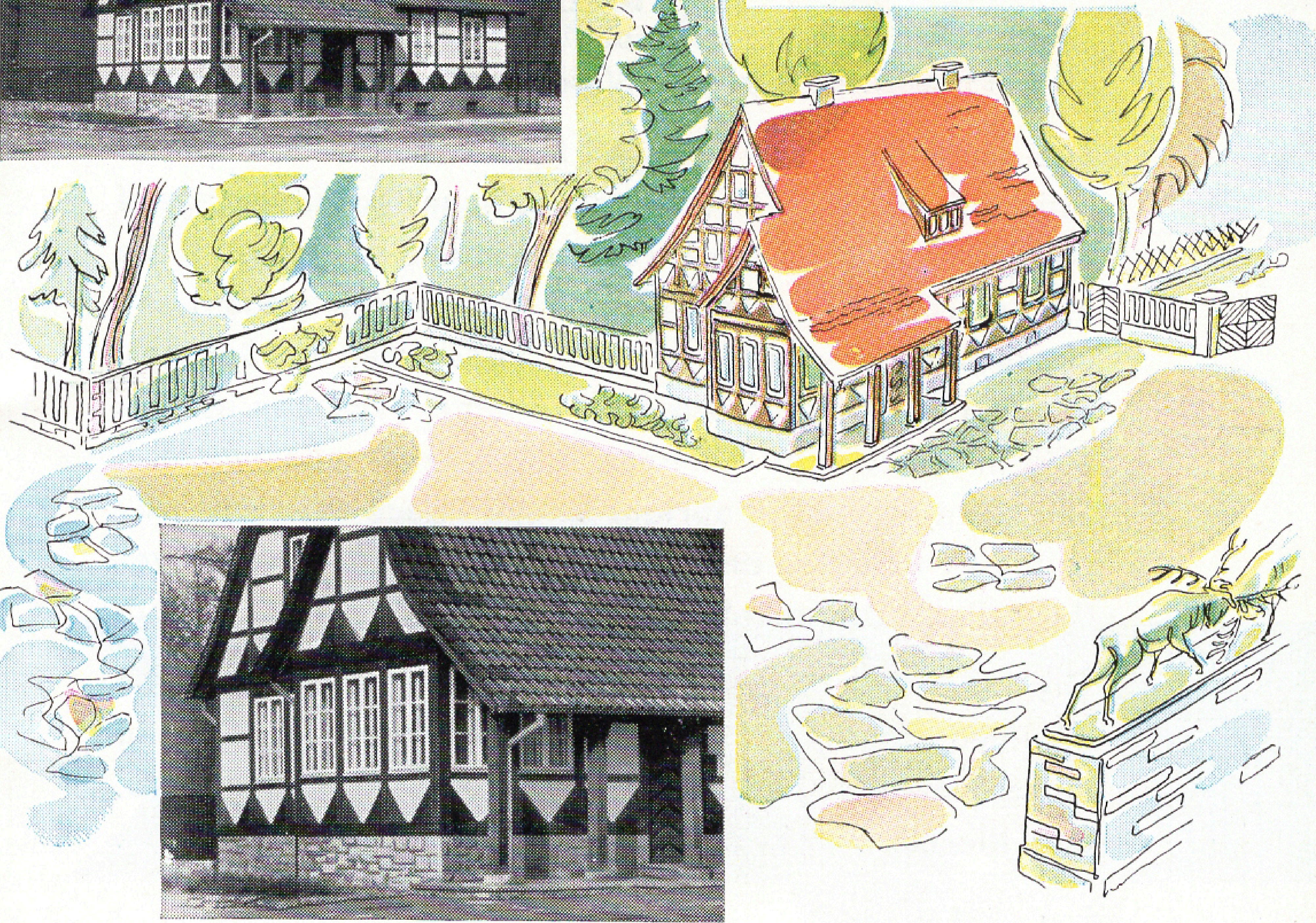
namely the angle of view, whether you include the greatest possible subject area in a given space, or alternatively show one subject on the largest possible scale. The negative area is always the same: 24 x 36 mm. Yet with the PROMINENT you can adapt yourself to the requirements of the subject, with the help of the interchangeable lenses in their quick-change mount.

According to the needs of the moment you can fit the PROMINENT with a 2 inch (5 cm.) standard lens, a 4 inch (10 cm.) telephoto, or a 1<sup>3</sup>/<sub>8</sub> inch (3.5 cm.) wide angle lens. In that way you control the scale of reproduction, the angle of view, and the depth of field by just changing the focal length. Your shots attain that final touch which distinguishes the pictures of the expert.

With the TELOMAR or the DYNARON, for instance, you can "fetch" distant objects in a way similar to a telescope and record them magnified four times in area on the film. You capture close-up sports shots as easily as you avoid perspective distortion with portraits. When you use the TELOMAR with the reflex attachment you can at the same time accurately check the image on the ground glass screen. On the other hand, you are particularly mobile with the DYNARON. Like all other Voigtländer lenses, this new telephoto lens yields pin-sharp definition. It also has the additional advantage of producing portrait shots of a certain "delicate sharpness" at close distances around 5 feet and full aperture, similar to the definition of the world-famous HELIAR. A further notable feature is the excellent colour correction; this applies equally to the TELOMAR.

Alternatively — and that is the purpose of the SKOPARON — you can increase the angle of view beyond that covered by the standard focal length of 2 inches (5 cm.). How often do you find that some interesting parts of the subject just won't fit into the picture area! Indoor shots, but also architectural subjects and landscapes frequently require a wide angle of view to include all the important or





attractive details. In that case you can change the standard lens for the wide angle one in a matter of seconds; the quick-change mount of the PROMINENT permits rapid interchange of all lenses.

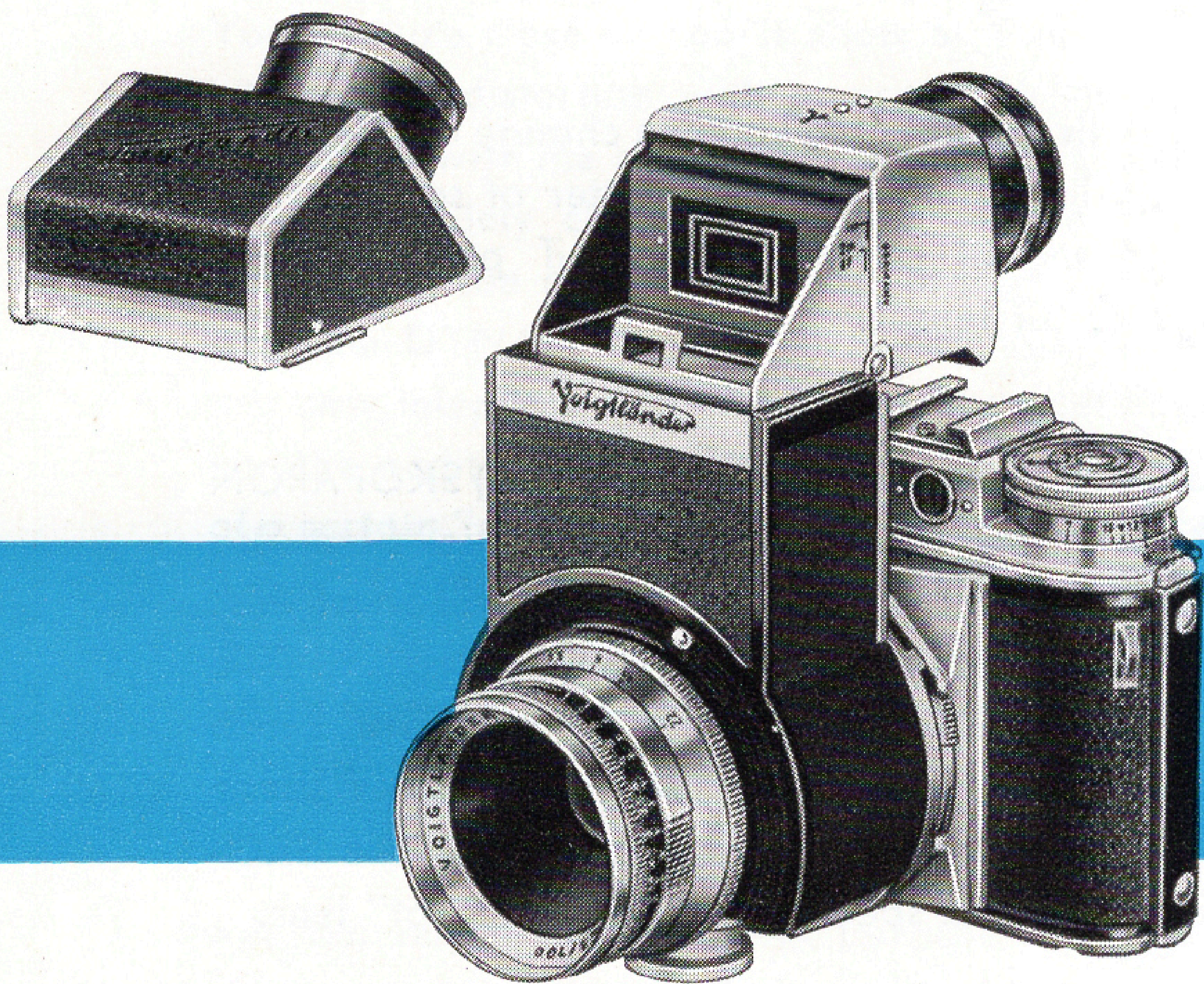
But the standard short focus  $1\frac{3}{8}$  inch (3.5 cm.) SKOPARON can serve not only to increase the angle of view, but also to extend the depth of field. One example will show this: At f/11 a distance setting of 15 feet yields a depth of field zone from about 10 to 40 feet with the standard 2 inch (5 cm.) lens; with the SKOPARON the range of sharp focus extends from about  $6\frac{1}{2}$  feet to infinity! The SKOPARON is therefore a specially useful "snapshot" lens.

All this is only a superficial indication of the many-sided scope which the interchangeable lenses of the PROMINENT offer. They give the camera a high degree of versatility which is further increased by the accessories for close-ups and photomicrography.

## The Extra Lenses of the PROMINENT

all belong to the series of Voigtländer high-class lenses. The 4 inch (10 cm.) TELOMAR  $f/5.5$  is built into a special reflex attachment. You therefore have the advantage of being able to check the arrangement and sharpness of the image accurately on the ground glass screen without any parallax error — even at close range down to 10 inches. For fast moving subjects (sport, games) you can use the built-in direct KONTUR finder of the reflex attachment. If you want to see the upright screen image the right way round as well, you only have to push a finder prism over the reflex attachment.

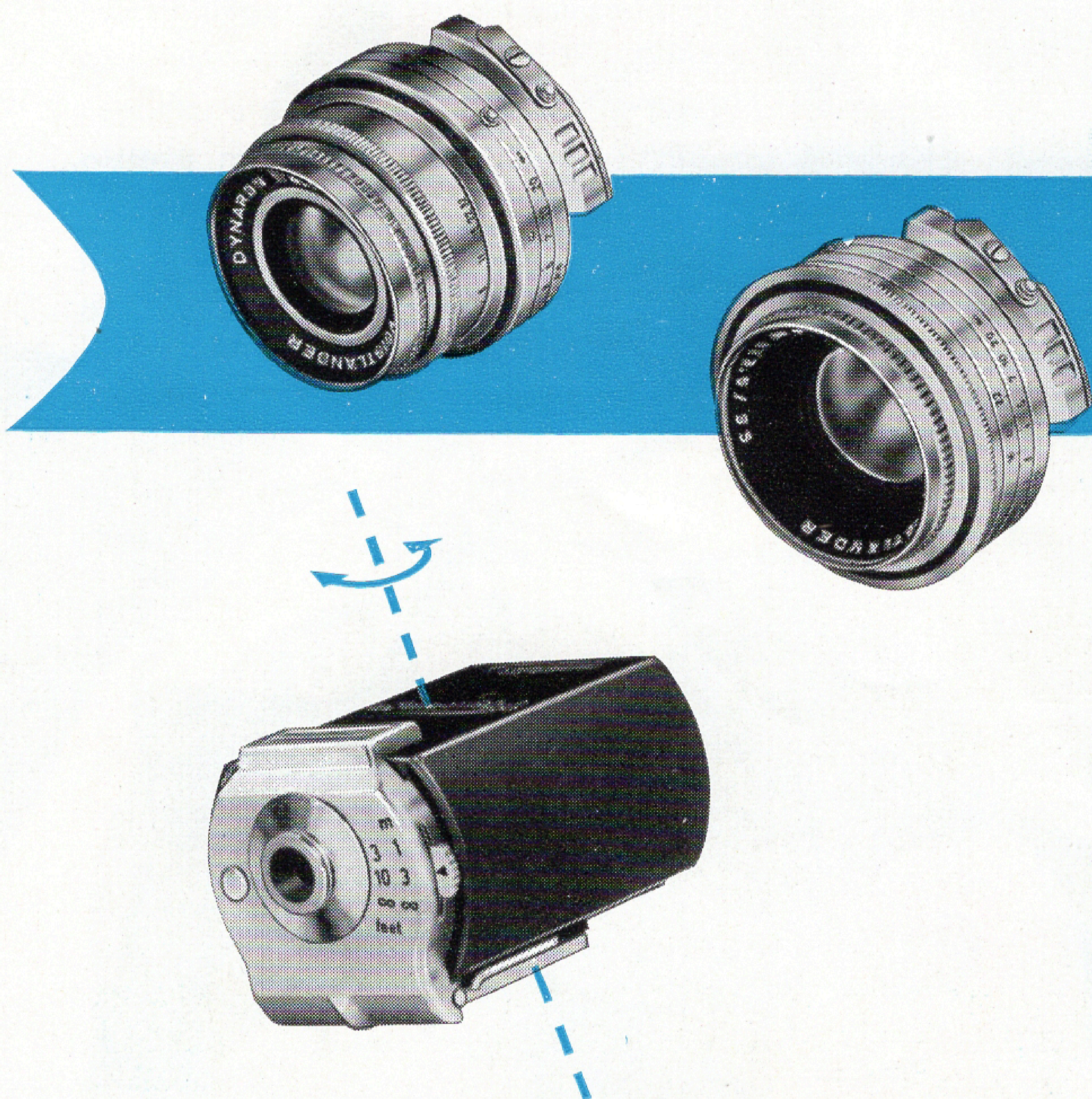
The 4 inch (10 cm.) DYNARON  $f/4.5$  telephoto lens can be mounted directly on the PROMINENT, and the focusing movement is coupled with the rangefinder of the camera. Like the TELOMAR, it is also used for photomicrography.



The TELOMAR and DYNARON are genuine telephoto lenses of short back focus. This reduces the risk of camera shake so common with long focus lenses.

The  $1\frac{3}{8}$  inch (3.5 cm.) SKOPARON f/3.5 is also mounted directly on the camera and is coupled with the range-finder. It covers an image angle of about 63 degrees. In view of its great depth of field even at large apertures it is popular for snapshots and colour photography.

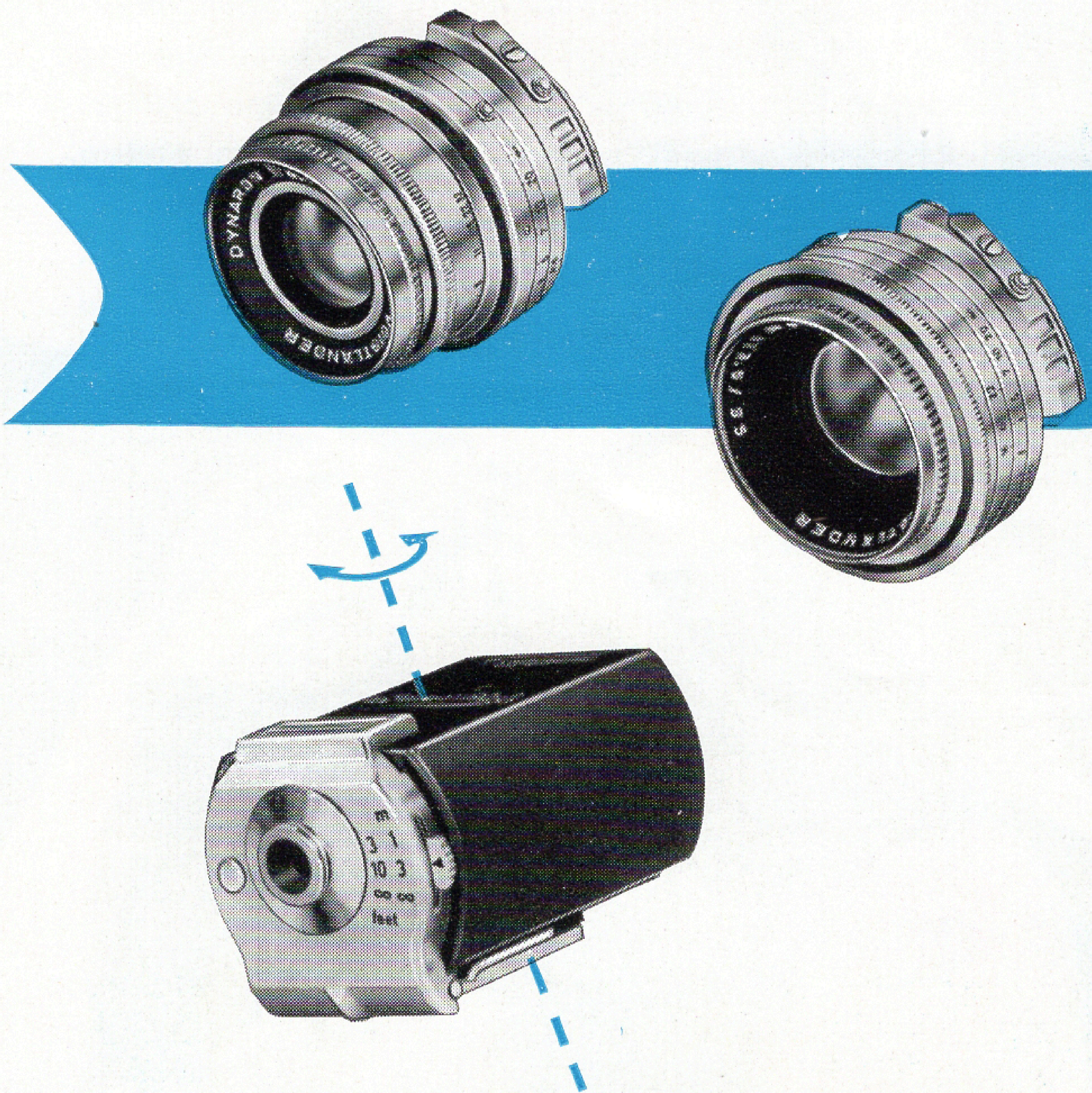
All extra lenses, like those of standard focal length, are hard coated and will stand up to normal cleaning.



To show the correct field corresponding to the lens in use, Voigtländer have developed the rotating TURNIT finder. This twoway finder fits into the accessory shoe of the camera. On simply reversing the upper part, it shows the finder field for either the DYNARON or SKOPARON when mounted on the camera. In both directions the finder shows a clear image which is evenly brilliant right into the corners for easy and sure viewing.

The  $1\frac{3}{8}$  inch (3.5 cm.) SKOPARON f/3.5 is also mounted directly on the camera and is coupled with the rangefinder. It covers an image angle of about 63 degrees. In view of its great depth of field even at large apertures it is popular for snapshots and colour photography.

All extra lenses, like those of standard focal length, are hard coated and will stand up to normal cleaning.

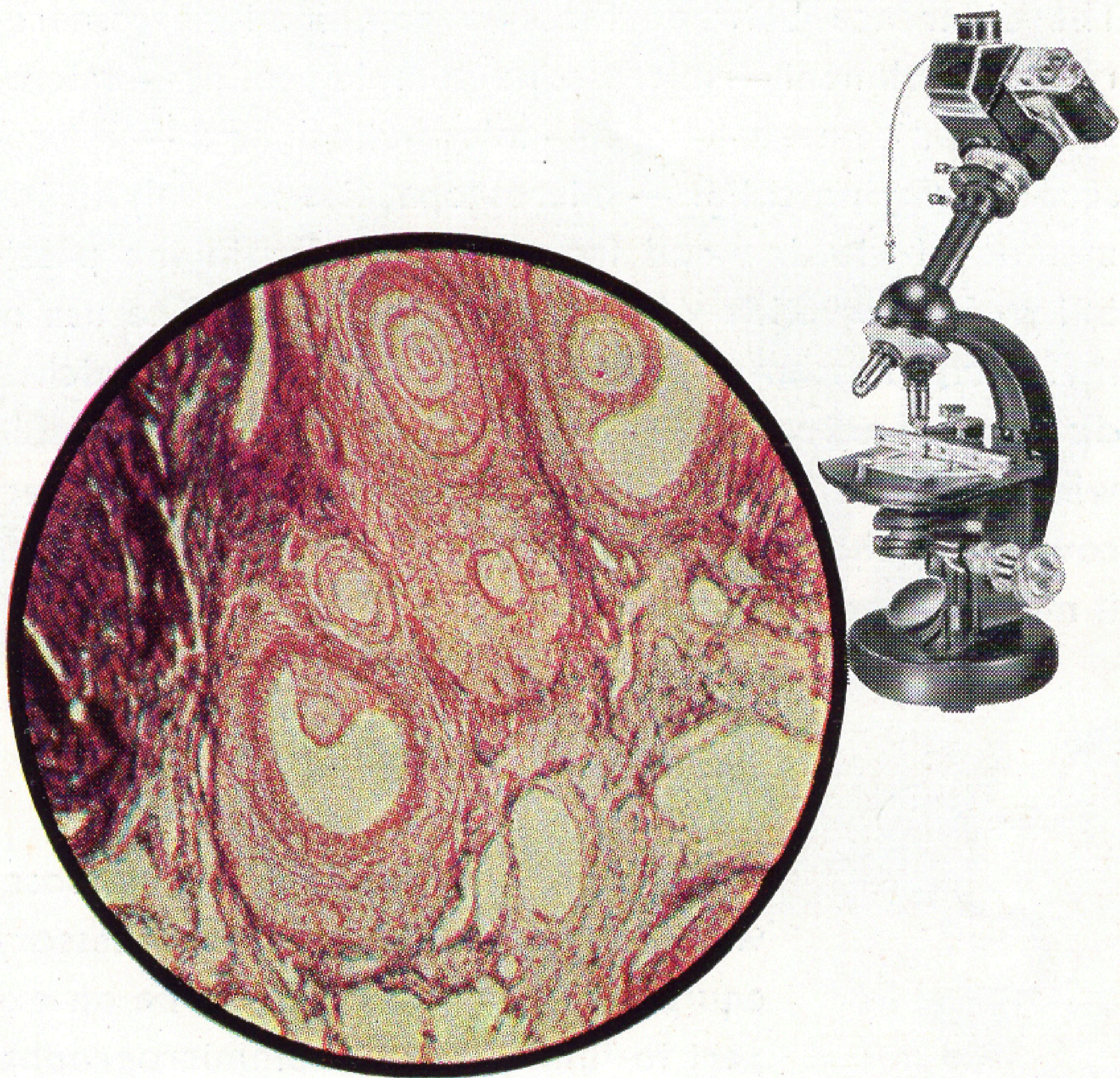


To show the correct field corresponding to the lens in use, Voigtländer have developed the rotating TURNIT finder. This twoway finder fits into the accessory shoe of the camera. On simply reversing the upper part, it shows the finder field for either the DYNARON or SKOPARON when mounted on the camera. In both directions the finder shows a clear image which is evenly brilliant right into the corners for easy and sure viewing.

# Valuable Microscope Specimens

are often particularly difficult to prepare. Yet a glass slide — often the only one of its kind — is awkward to handle and highly fragile. There it is much more sensible to use a photomicrograph.

With the PROMINENT they are easily obtained. The picture may be made as a negative to produce any number of enlargements, as a transparency for projection, or even as a colour negative or transparency. Such photomicrographs are instructive and convincing illustrations for papers, reports, and lectures — even in the field of science one picture may tell more than a thousand words! The PROMINENT is thus also a definite professional tool for doctors, chemists, biologists, geologists, and other scientists and research workers.



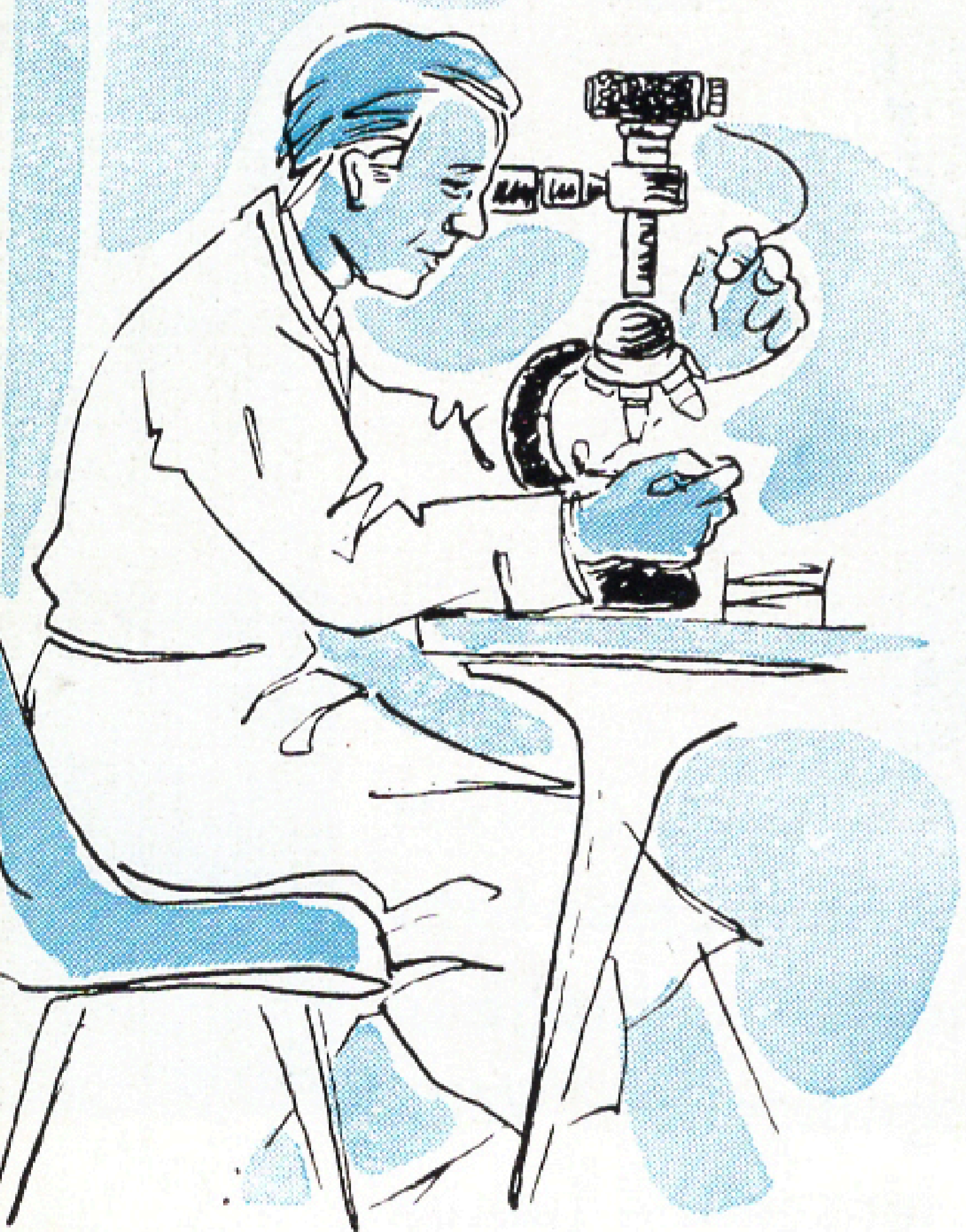
You can use the PROMINENT with any of its lenses (except the SKOPARON) for photomicrography. With the standard 2 inch (5 cm.) lenses the negative then shows the image at one-fifth of the original microscope magnification. With the TELOMAR or DYNARON telephoto lenses the image

scale is twice as great, i. e. 1 : 2.5. Thus with an enlargement of  $2\frac{1}{2}$  times in the print, you again obtain the full microscope magnification.

The PROMINENT system offers two ways of taking photomicrographs: with the **reflex attachment**, or with the **micro-attachment with focusing telescope** (described more fully later on).

When using the reflex attachment with the TELOMAR f/5.5 the microscope image is focused on the ground glass screen. With the other lenses the picture is focused by means of the image seen through the focusing telescope of the micro-attachment. With both combinations a **microscope clamping collar** securely centres the photographic unit on the microscope.

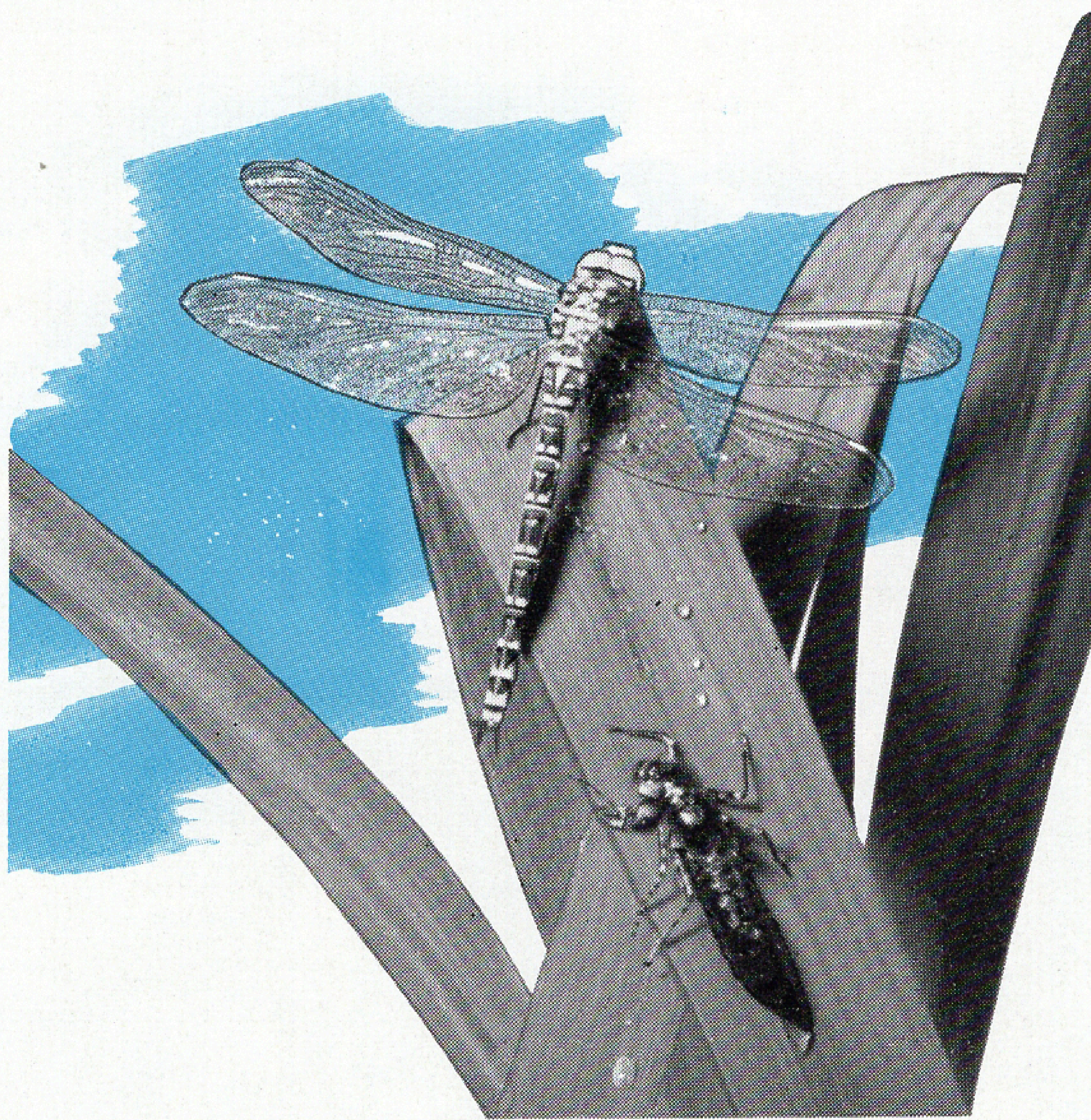
The difference between the two combinations camera-reflex attachment — microscope clamping collar — microscope, and camera — lens — micro-attachment — microscope clamping collar — microscope, lies not only in the method of viewing and focusing, but also in the possibility of observation while taking the picture. The use of the micro-attachment allows the subject to be watched **during the actual exposure**. This is particularly valuable with live, and thus moving, specimens since the subject covered by the microscope field may change all the time. It may be ideal for exposure in one instant, yet move out of the field of view altogether the next moment.



Whichever combination you choose, with the PROMINENT and its accessory equipment you don't have to be an expert to take perfect photomicrographs. At negligible cost (considering the economy of the miniature film) you capture one shot after another: single exposures or picture series, live subjects or preserved specimens, in black-and-white and colour.

## A Big View of Small Things

When you get down to close-up photography things become really exciting! The Voigtländer Focar lenses 0, A, B, and C, or 1 and 2 respectively permit photography on a scale up to 1 : 2.5, according to the combinations of the individual close-up lenses with the camera lenses. You can thus explore a microcosm of uncommon photographic attraction. The whole wealth of shapes and detail of small subjects only shows up properly in a large close-up picture. And if in addition you record it all in colour, you find yourself in a completely new world.



Close-ups are specially easy with the reflex attachment. This has the advantage of completely parallax-free viewing which is particularly valuable at such close range. You can also focus the screen image conveniently and even see the extent of the depth of field at a glance.



PROMINENT with NOKTON f/1.5 and Focar Lens;  
Gevacolor Reversal Film R 5



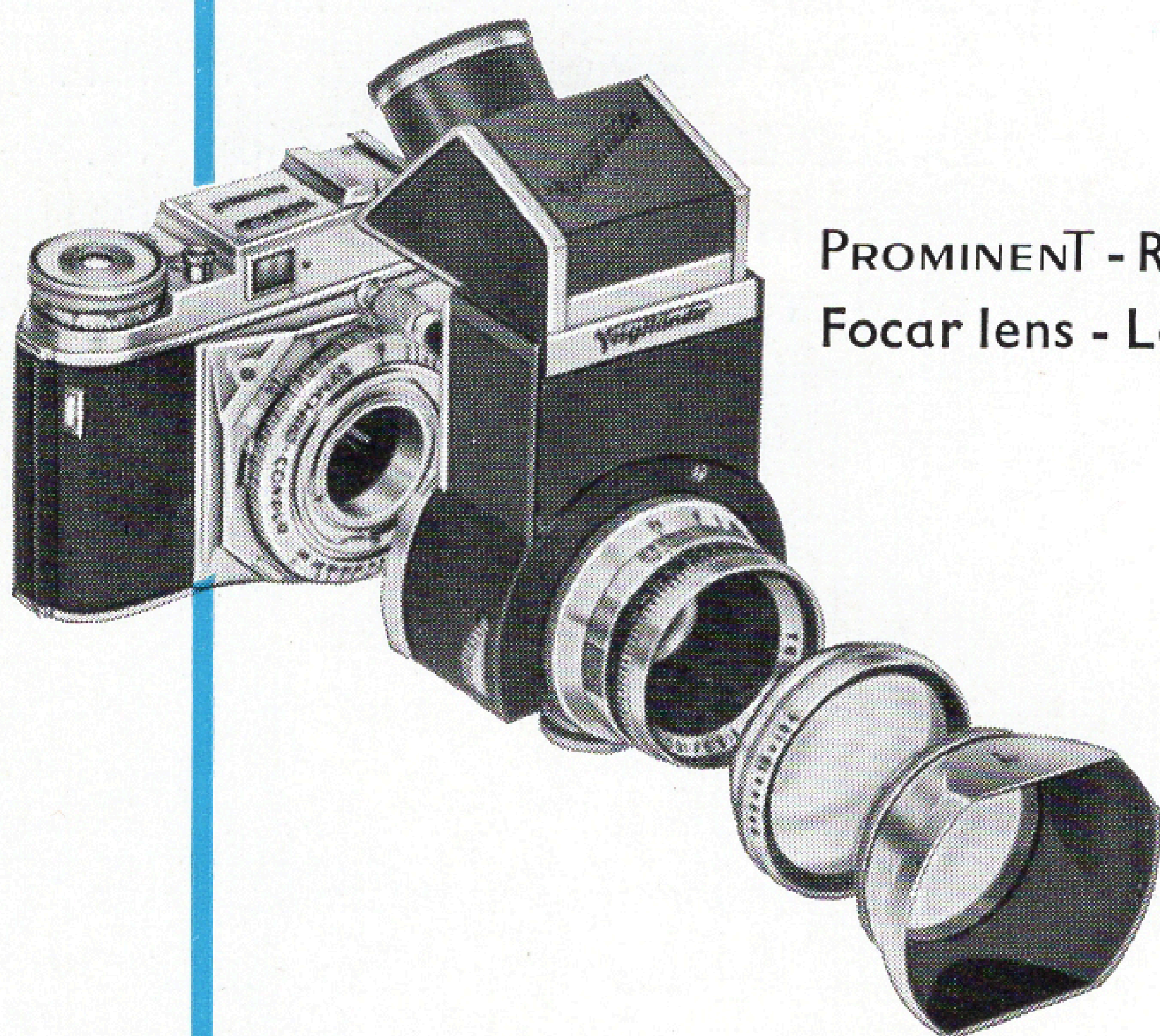
Instead of the Focar lenses you can also use the universal PROXIMETER attachment. This focusing unit adapts the lens, and the coupled rangefinder as well, to the near range of 3<sup>1</sup>/<sub>2</sub> feet down to some 10 inches. It allows the combination of both the lens and the rangefinder in the close range with the same exactness as in the normal one, thus eliminating parallax. When using the DYNARON together with the PROXIMETER an image scale of 1:2,5 is attained. For further details you may care to ask your photo dealer for a special prospectus which he will have in stock.

## For Copying

documents, drawings, and other originals a copying stand is also in preparation. This is fitted with a lens specially corrected for close distances — the REPRO-SKOPAR — and in conjunction with the PROMINENT will copy originals of all sizes from 11<sup>1</sup>/<sub>2</sub> x 16<sup>1</sup>/<sub>2</sub> inches down to about 2 x 3 inches.

The advantages of this piece of equipment include not only its outstanding lens (which is ideal for instant perfect copying on colour film) but also its particularly ingenious construction. The copying stand can be completely dismantled and is then easily accommodated in any brief case. In addition, the parts can be assembled in such a way as to form a light but firm table stand for normal close-up photography. A supplementary ground glass adaptor and magnifier are in preparation.

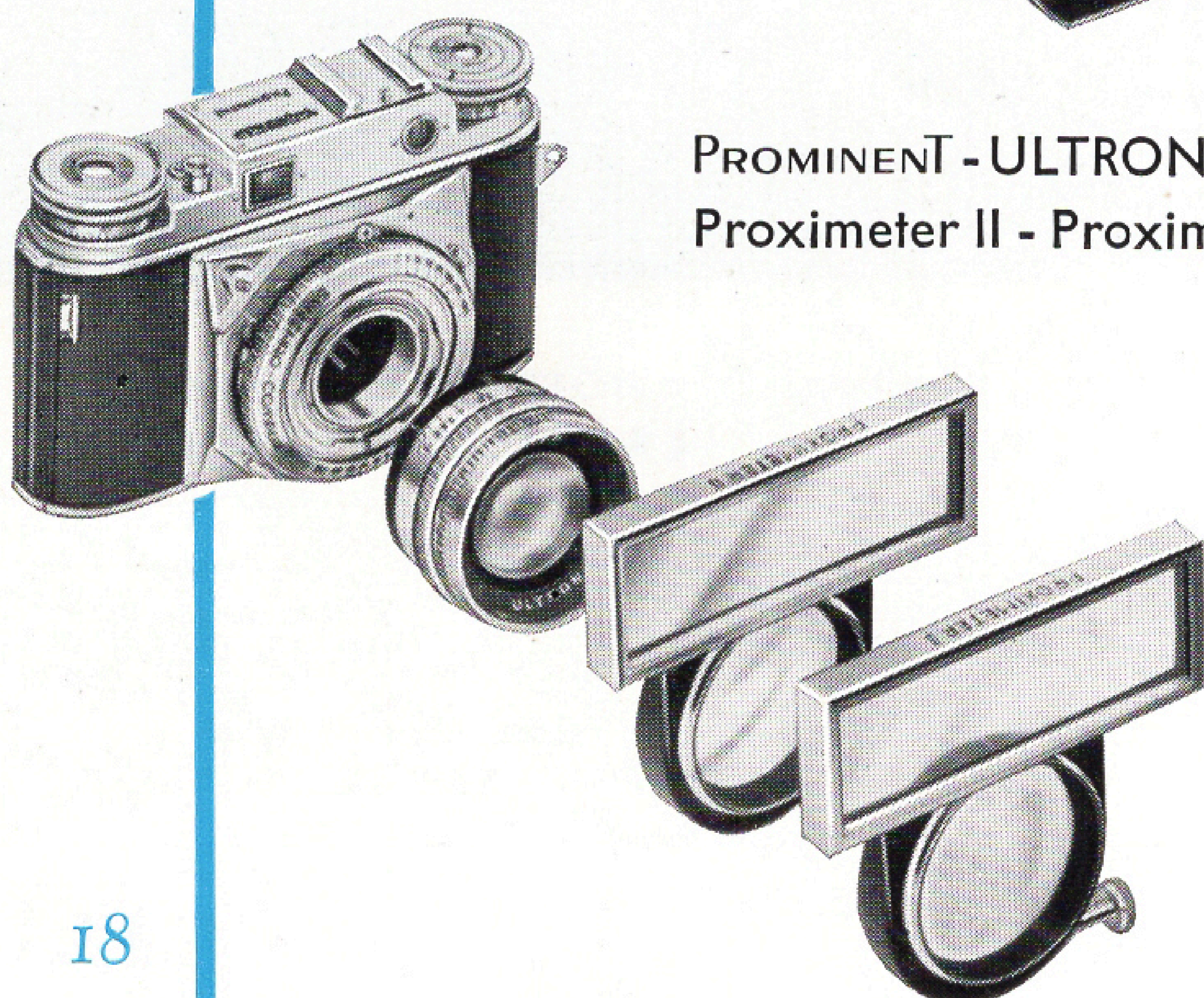
*Various combinations  
for close-ups*



PROMINENT - Reflex housing -  
Focar lens - Lenshood



PROMINENT - COLOR-SKOPAR -  
Focar lens - Filter - Lenshood



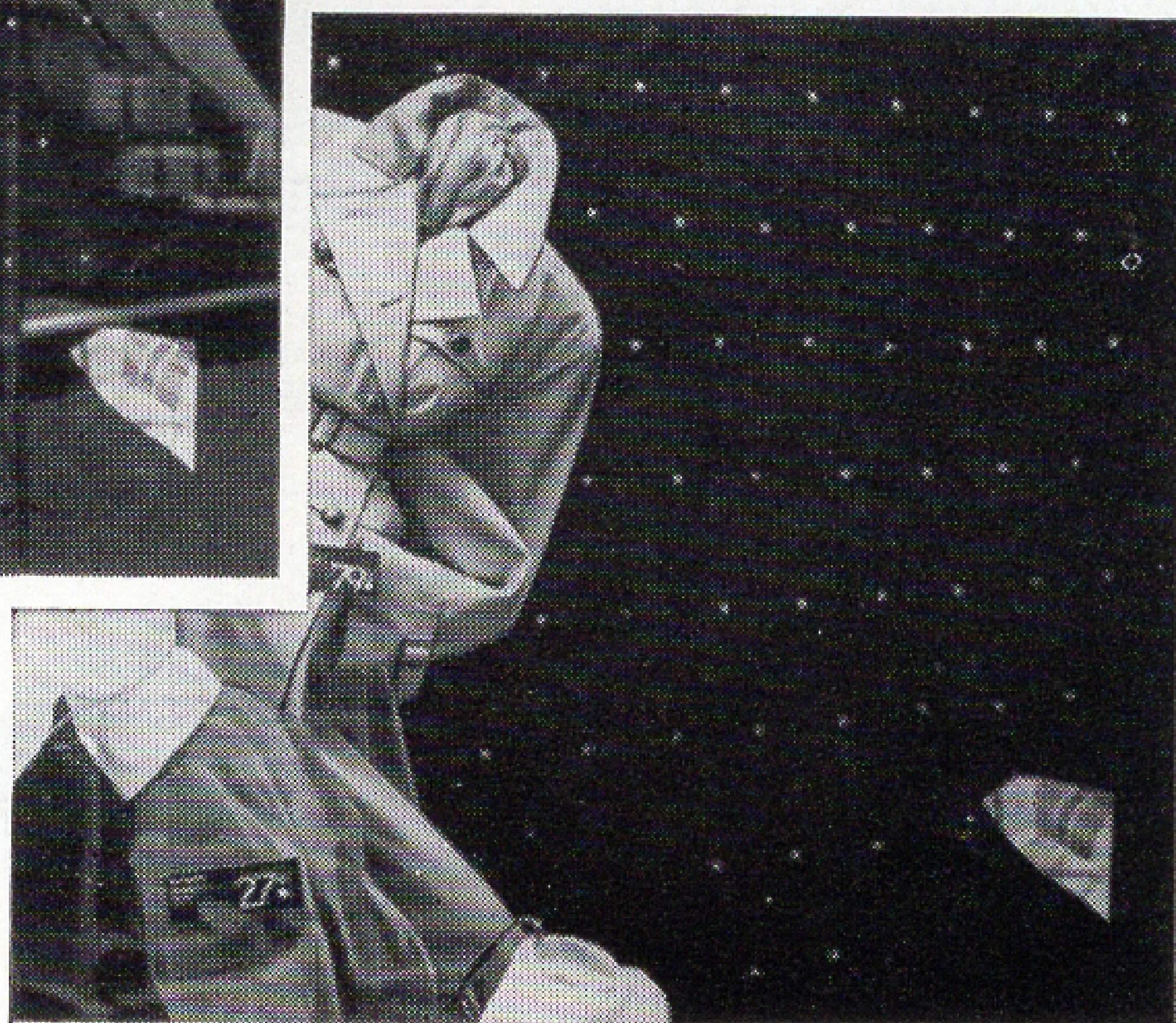
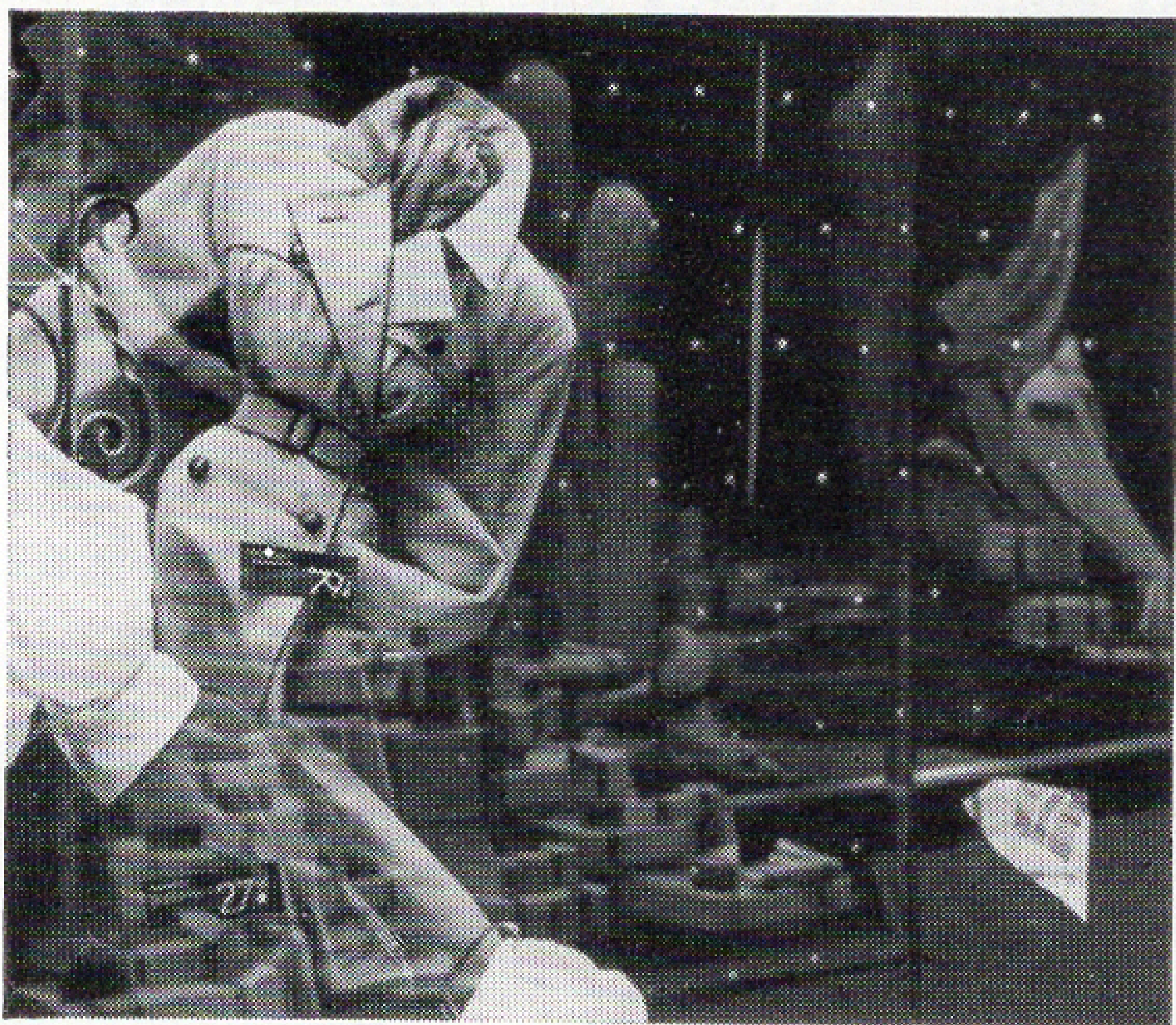
PROMINENT - ULTRON -  
Proximeter II - Proximeter I

## The Dot of the »i«

is a tiny affair, yet you need it to complete the letter. Equally necessary are the various small accessories made by Voigtländer apart from the actual components of the PROMINENT system.

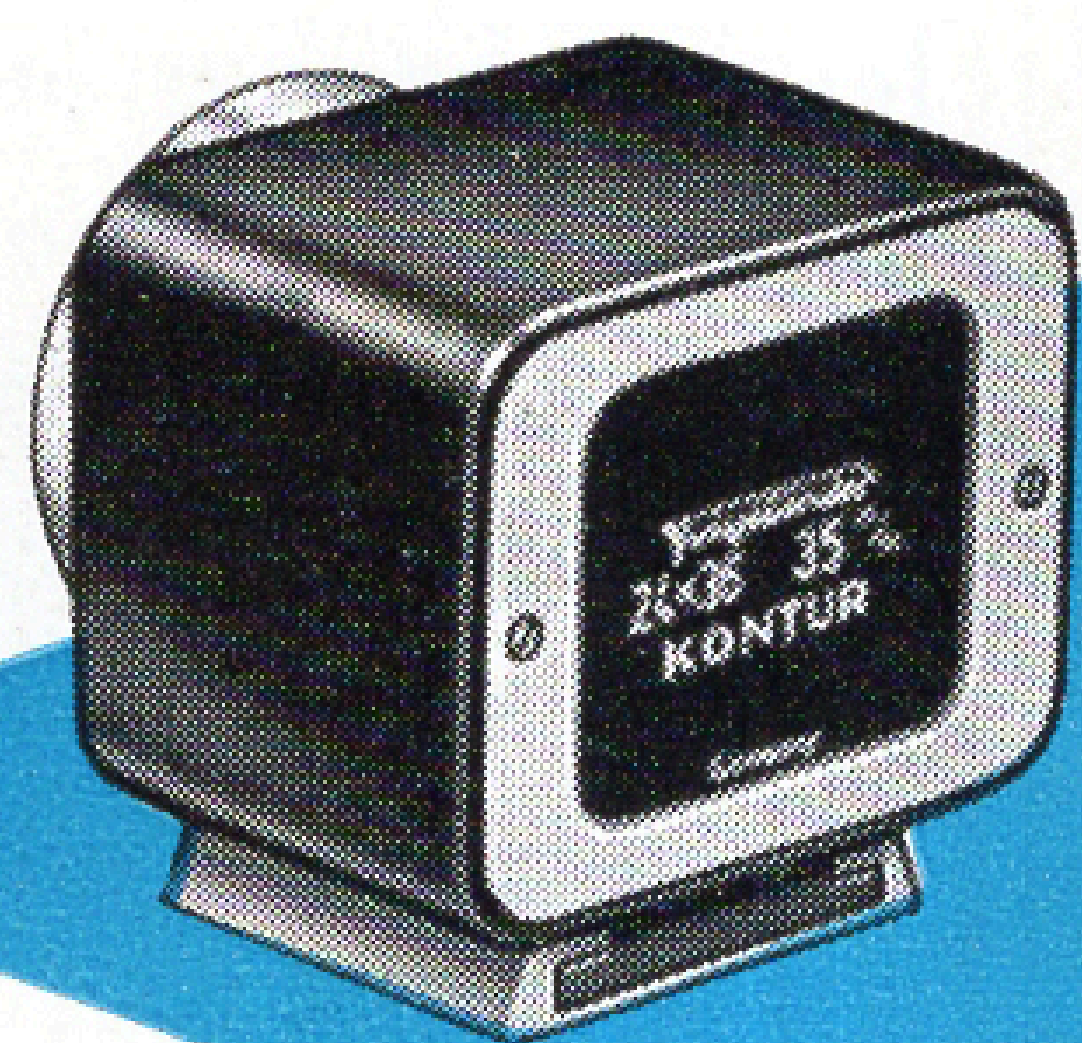
The **lens hood** and **filters** are the most important items. No expert will ever take a picture without a lens hood, even if the subject is in the shade. For in that way he is sure of eliminating all the stray light and minor disturbing reflections which so often kill the fine tone gradations of a picture. The carefully planned shape of the PROMINENT lens hood fits easily into the ever-ready case. The filters ensure ideal reproduction of the subject colours in tones of grey. They are required because the emulsion is not evenly sensitive to the individual colours. Filters are equally suitable for producing interesting pictorial effects. The colours available for the various purposes are two different densities of yellow, a green, and an orange filter.

The **ultra-violet** (U. V.) filter is useful wherever a haze-free atmosphere passes a lot of ultra-violet radiation, such as at the seaside or in mountain regions above 5000 feet. With colour film the ultra-violet filter often improves the colour rendering. The **polarizing filter**, on the other



hand, cuts down reflections from shop windows, spectacles, water surfaces, and the like. Finally, the **Type A conversion filter** allows artificial light type colour film to be used in daylight or with light sources of daylight quality such as electronic flash or blue-coated flash bulbs. All PROMINENT filters are precision made and coated on both sides to preserve the high standard of image quality of the lenses.

Another important accessory to complete your camera outfit is the Voigtländer KONTUR finder. With its help you see the subject in the most natural way and in natural size — with both eyes open. In addition you see everything that is going on outside the picture area itself. You will only realize what a boon this is when you try to shoot action subjects and see how easily you can judge just the right moment for the exposure.



The **ever-ready case** and **carrying strap** are further items listed in the separate Voigtländer accessories catalogue. Your photo dealer will gladly give you this little booklet for your detailed information, as well as the leaflet about the KONTUR finder.



## Night Turns into Day



in flash shots. It is almost superfluous to write here at length about flash photography — it has become so widespread. The advantages are obvious: with flash you are always completely independent of the prevailing lighting. It matters little whether you want to take outdoor shots at night, or use the flash indoors in your sitting room, whether you want to light up an against-the-light shot with flash in broad daylight, or make a close-up in dull weather look like brilliant sunshine — it is equally immaterial whether you use class F or class M flash bulbs or an electronic flash outfit, whether you want to flash in black-and-white or colour — the PROMINENT never lets you down. The **speed**-synchronized SYNCHRO-COMPUR shutter makes the best possible use of all types of flash, even at 1/500 second. Also, the negative is absolutely evenly illuminated all over (which may not be the case with other shutter systems) — a specially important point when you take flash shots in colour.

The ideal flash gun for the PROMINENT owner is the **Flash case**. This is an entirely novel combination of an ever-ready case with a flash gun. It does away with the need for mounting a flash gun on the camera — you are ready to shoot all the time. Even the flash cable is permanently connected to the flash socket of the camera; for normal pictures in daylight or artificial light you simply shoot without a flash bulb.



Just check for yourself how you are instantly ready for action with the flash case:

Normally, you

- ★ Open the ever-ready case
- ★ Open the case of the flash gun
- ★ Take out the flash gun
- ★ Attach the gun to the bracket and the bracket to the camera\*
- ★ Connect the flash cable
- ★ Put away the case of the flash gun
- ★ Insert the flash bulb

With the flash case you

- ★ Open the Flash case
- ★ Insert the flash bulb

Two operations instead of seven — it couldn't be simpler! Besides, you don't need to carry a second case with the flash gun, everything is in your ever-ready case!

However, if you prefer an ordinary flash gun, you can supplement your photo outfit with the **M-X Capacitor Flash Gun**.

The two leaflets "The Case with the difference", and "Always ready with the Voigtländer M-X" describe these two flash equipments in detail; ask your photo dealer for them.

\*or fix the flash gun to the accessory shoe



# Voigtländer

