



CHRISTMAS
KODAKS



A WINTER DIVERSION



HE who looks upon Kodakery as a mere summer fancy misses half its charm.

The delights of home photography, and the weird effects of winter landscape work are always ready to lend their witchery to the zealous amateur. Winter as well as summer has its picture side. The naked trees and barren fields with gray skies overhead have in them as great pictorial possibilities as have the softest days of summer. And winter is the season for indoor portraiture—the time for photographing one's friends in their home surroundings, either by daylight or by flashlight. It is in the long evenings of winter, under the spell of the rosy darkness of the developing room that photography reveals its most cherished and charming secrets—it is then that the amateur finds time for printing, for lantern slide making and for the fascinations of Bromide enlarging.

And the Kodak is especially adapted to winter photography. Its simplicity enables one to operate it comfortably out-of-doors with warmly gloved hands ;

the "Double-two," the six and the twelve exposure cartridges, with which the Kodak loads in daylight, enable one to prepare economically and conveniently for a pictorial ramble, or to make portraits at home without a waste of film.

The "Double-two" cartridges are a most desirable innovation, enabling the Kodaker to load for four pictures, and after making two exposures remove them and thread up the remaining exposures *in daylight*, or he may, if he chooses, make all four exposures before removing the cartridge.

Development may await the Kodaker's convenience. He may readily do it himself, running a full strip or a half strip of film through the developer at one time as easily as he can develop a single glass plate. The strip method does away with curling and is one more step in advance in the simplifying of amateur photography. Of course, if you wish, "*we do the rest.*"

FOR PORTRAIT WORK.

Home portraiture has always possessed a subtle charm for the amateur. With the Portrait Attachment which we furnish (extra) for nearly all of the smaller Kodaks, bust pictures may be made, equalling in size an ordinary Mantello photograph. This attachment is simply an extra lens which slips over the regular lens, enabling the operator to get a sharp picture with a fixed

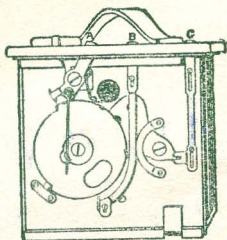
focus Kodak at a distance of only $3\frac{1}{2}$ feet from the subject. It requires no special skill to use the attachment as the Kodak is operated in precisely the same manner as when in ordinary use.

AS CHRISTMAS GIFTS.

From the dollar Brownie for the boys and girls, up to the No. 5 Cartridge Kodak with its most expensive equipment, every size and style of Kodak makes an appropriate Christmas present. For the young folks there can be nothing more fitting—nothing that will give more pleasure, or more instruction. Amateur photography cultivates a taste for the beautiful in nature and in art. It teaches observation. It often develops in the inquiring mind a love for the mysteries of chemistry and the laws of optics. Its influences are all the highest, the best.

Put a Kodak on your Christmas list.

EASTMAN KODAK COMPANY,
Rochester, N. Y.



EASTMAN'S IMPROVED ROTARY SHUTTER.

The simplicity and absolute reliability of our Rotary Shutter was one of the features which gave to the original Bulls-Eye and to the Pocket Kodak their immense popularity. It is always set. Snap shots are made by simply pushing the lever "A" alternately to the right or left, thus revolving the metal disc and making the exposure as the opening in disc passes the lens. If, by chance, the lever be pushed in the wrong direction, it will simply remain unmoved and no click will be heard.

For time exposures the Kodaker simply pulls up the slide "B" and then pushes the lever "A" in one direction to open and in the opposite direction to close the shutter. It will be seen that when the slide "B" is pulled out the shutter strikes as it passes the lens, stopping half way across with the opening over the lens.

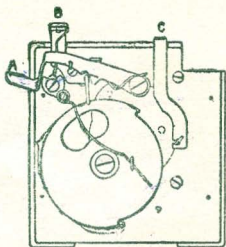
The lever "C" controls the stops, of which there are three.

Made with special machinery, by skilled mechanics, this simple mechanism makes an ideal shutter for the hand camera.

The Eastman Rotary Shutter is used on the Pocket Kodak, the No. 2 and No. 4 Bulls-Eye, No. 2 Folding Bulls-Eye, No. 2 and No. 4 Bullet and the No. 2 Flexo Kodaks.

This shutter is also used on the Brownie Camera, but with that instrument has one stop only.

EASTMAN AUTOMATIC SHUTTER.

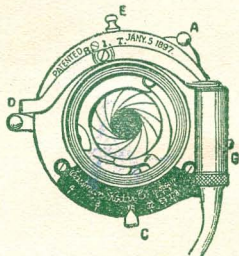


To make a snap shot: Press down lever "B." To make a time exposure: Press down lever "A" once to open, and again to close the shutter. That's all there is to operating the Eastman Automatic Shutter. It is always set.

The lever "C" operates the stops, of which there are three.

Not only are these shutters made with the finest special machinery and with the utmost care, but they are given a thorough and practical test by experienced inspectors. In fact, all of our shutters are subjected to the most rigid inspection before shipment as a guarantee that every part is perfect and that no error of adjustment has been made in assembling.

The Eastman Automatic Shutter is used on the Folding Pocket Kodaks, No. 1, No. 1A, No. 2 and No. 3.



EASTMAN TRIPLE ACTION SHUTTER.

This is a shutter with a wide range of action, built with the accuracy of a watch, yet simple, strong, reliable and far more compact than any other shutter of similar capabilities.

For snap shots place lever "E" at point "T" and set shutter by turning lever "A" to left to limit of motion. Expose by pressing bulb attached to tube "F" or by touching release "D." There are three speeds for instantaneous exposures which are regulated by moving the lever "G."

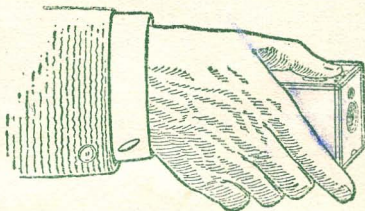
For time exposures place lever "E" at point "T" and set shutter by turning lever "A" to left to limit of motion. Press bulb (or release "D") once to open and again to close shutter.

For short time exposure place lever "E" at "B" and set shutter by moving "A" to left to limit of motion. Press bulb (or finger release D) to open shutter and release it to close shutter. The shutter remains open as long as the bulb remains under pressure and closes the instant it is released.

The stops are operated by moving lever "C" and range from U. S. 4 to U. S. 128.

As furnished with the No. 3, 4 and 5 Cartridge Kodaks this shutter is fitted with pneumatic release operated by bulb. With the No. 2 and No. 4 Bulls-Eye Special and the No. 2 and No. 4 Bullet Special Kodaks it is operated by levers, those for setting the shutter and making the exposure *working from the outside of camera*, so that the front does not have to be opened except to change the adjustment.

THE POCKET KODAK.



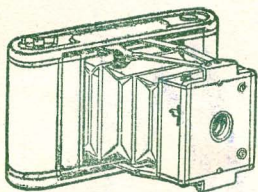
For rectangular pictures, $1\frac{1}{2} \times 2$ inches; capacity, 12 exposures without reloading; size of camera, $2\frac{3}{8} \times 2\frac{7}{8} \times 3\frac{3}{8}$ inches; weight, 6 ounces; length of focus of lens, $2\frac{1}{2}$ inches.

This is the original daylight loading pocket instrument, improved, of course, since the earlier models, and though small in size, it is in every way a perfect camera. Indeed, in the quality of the work which they accomplish, the Pocket Kodaks equal the most expensive cameras and make negatives of such sharpness that enlargements of any size can be made from them.

Pocket Kodaks have carefully tested lenses with a fixed focus of sufficient length to avoid distortion, they have our Rotary shutter described on page 4, sets of three stops, square finder, are of perfect construction and are covered with fine seal grain leather.

Can be readily carried on the bicycle by use of our special cases.

Pocket Kodak covered with fine leather, with Transparent Film Cartridge for 12 exposures,	\$5.00
Leather Hand Carrying Case (for Pocket Kodak and three extra spools of film). Price of case only,75
Transparent Film Cartridge, 12 ex.,25
Paper-Film Cartridge, 12 ex.,20



FOLDING POCKET KODAKS No. 1 and No. 1 A.

In the Folding Pocket Kodaks we have adapted the Film Cartridge system to instruments that have well been called "Photographic Pocket Pieces."

The lenses used in these instruments are specially ground, are meniscus achromatic and are carefully tested by an experienced inspector. They are in short the finest achromatic lenses that can be made, covering the plate clear and sharp to the very corners.

The shutters are the Eastman Automatic described on page 5, and are equipped with a set of three stops.

These Kodaks have two view finders, one for vertical and one for horizontal exposures. There are no loose parts to become lost or mislaid, and to load is simplicity itself. Made of aluminum, covered with the finest black morocco, with handsomely nickeled fittings. In short, they are instruments of the finest quality and workmanship, but of the smallest compass; and though practical pocket cameras, make pictures of good size and of artistic shape and so sharp that they can be enlarged to any size.

Can be readily carried on the bicycle by the use of the hand cases and our special clamps.

FOLDING POCKET KODAK No. 1.

For rectangular pictures $2\frac{1}{4} \times 3\frac{1}{4}$ inches; capacity, 12 exposures without reloading; size of Kodak, $1\frac{5}{8} \times 3\frac{1}{2} \times 6\frac{3}{4}$ inches; weight, $14\frac{1}{2}$ ounces; length of focus of lens, 4 inches.

PRICE.

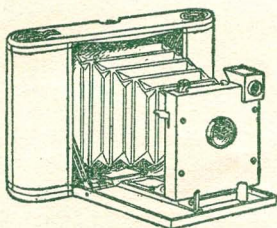
No. 1 Folding Pocket Kodak with achromatic lens, not loaded,	. \$10.00
Transparent Film Cartridge, 12 ex., $2\frac{1}{4} \times 3\frac{1}{4}$,40
Do., 6 ex.,20
Paper-Film Cartridge, 12 ex., $2\frac{1}{4} \times 3\frac{1}{4}$,30
Do., 6 ex.,15
Black Sole Leather Carrying Case, 1.25
Kodak Portrait Attachment,50

FOLDING POCKET KODAK No. 1 A.

For rectangular pictures $2\frac{1}{2} \times 4\frac{1}{4}$ inches; capacity, 12 exposures without reloading; size of Kodak, $1\frac{3}{4} \times 3\frac{7}{8} \times 7\frac{3}{4}$ inches; weight, $17\frac{1}{2}$ ounces; length of focus of lens, 5 inches.

PRICE.

Folding Pocket Kodak No. 1 A, with achromatic lens, not loaded,	. \$12.00
Transparent Film Cartridge, 12 ex., $2\frac{1}{2} \times 4\frac{1}{4}$50
Do., 6 ex.,25
Paper-Film Cartridge, 12 ex., $2\frac{1}{2} \times 4\frac{1}{4}$,35
Do., 6 ex.,18
Black Sole Leather Carrying Case, 1.25
Kodak Portrait Attachment,50



No. 2 FOLDING POCKET KODAK.

For square pictures $3\frac{1}{2} \times 3\frac{1}{2}$ inches; capacity, 12 exposures without reloading; size of Kodak, $1\frac{1}{2} \times 4\frac{1}{2} \times 6\frac{3}{4}$ inches; weight, $16\frac{1}{2}$ ounces; length of focus of lens, $4\frac{1}{2}$ inches.

In the No. 2 Folding Pocket Kodak we have adapted the popular $3\frac{1}{2} \times 3\frac{1}{2}$ size to a pocket instrument of extreme lightness and mechanical perfection. It slips readily into an ordinary coat pocket and being in every way equipped for the best photographic work it marks a distinct advance in Pocket Photography.

The lenses are the finest meniscus achromatic, having wonderful depth, definition and speed and cover fully with the largest stop opening and have a fixed focus of $4\frac{1}{2}$ inches.

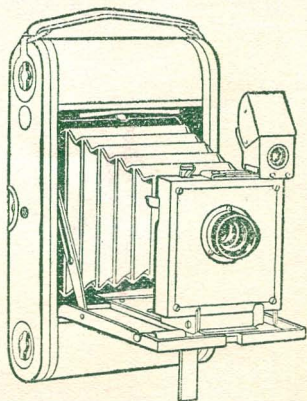
Fitted with Eastman Automatic shutter, described on page 5, with set of three stops, socket for tripod screw and brilliant finder. Made of aluminum, covered with the finest black morocco, with handsomely nicked fittings, it is at once strong, dainty and durable.

Can be readily carried on the bicycle by the use of the regular hand case and our special clamps.

No. 2 Folding Pocket Kodak with achromatic lens, not loaded,	\$15.00
Transparent Film Cartridge, 12 ex., $3\frac{1}{2} \times 3\frac{1}{2}$,	.60
Do., 6 ex.,	.30
Do., Double-Two Cartridge, 4 exposures,	.20
Paper-Film Cartridge, 12 ex., $3\frac{1}{2} \times 3\frac{1}{2}$,	.40
Do., 6 ex.,	.20
Black Sole Leather Carrying Case,	1.25
Kodak Portrait Attachment,	.50

No. 3 FOLDING POCKET KODAK.

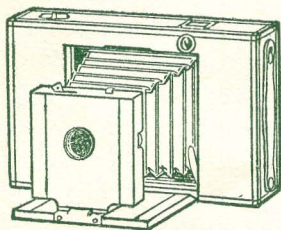
For rectangular pictures, $3\frac{1}{4}$ x $4\frac{1}{4}$ inches; capacity, 12 exposures without reloading; size of camera, $1\frac{5}{8}$ x $4\frac{3}{8}$ x $7\frac{1}{4}$ in.; weight, 22 ozs.; length of focus of lens, 5 inches.



The No. 3 Folding Pocket Kodak marks the highest achievement in pocket photography. Although readily fitting the pocket this Kodak has the capabilities of cameras of triple the bulk. The lens is rapid rectilinear and carefully tested, the shutter is the Eastman Automatic, described on page 5, and is fitted with a set of three stops. Reversible brilliant finder with hood, index for focusing, tripod socket for horizontal exposures.

Made of aluminum and covered with the finest black morocco, with full nickel fittings, this instrument will prove the ideal camera for those who demand the highest excellence in camera construction, yet desire a pocket instrument. Can be readily carried on the bicycle by the use of our special cases.

No. 3 Folding Pocket Kodak, with rapid rectilinear lens (not loaded),	\$17.50
Transparent Film Cartridge, 12 ex., $3\frac{1}{4}$ x $4\frac{1}{4}$ inches,	.70
Do., 6 ex.,	.35
Do., Double-Two Cartridge, 4 exposures,	.25
Paper-Film Cartridge, 12 ex., $3\frac{1}{4}$ x $4\frac{1}{4}$,	.50
Do., 6 ex.,	.25
Black Sole Leather Carrying Case, with shoulder strap,	1.25
Kodak Portrait Attachment,	.50



No. 2 FOLDING BULLS-EYE KODAK.

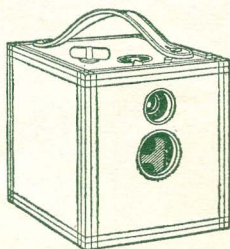
For square pictures $3\frac{1}{2} \times 3\frac{1}{2}$ inches; capacity, 12 exposures without reloading; size of camera closed, $1\frac{3}{4} \times 4\frac{5}{8} \times 7\frac{1}{8}$ inches; weight, 15 ounces; length of focus of lens, $4\frac{1}{2}$ inches.

Being but $1\frac{3}{4}$ inches in thickness when closed is very convenient to carry. Will go in an ordinary overcoat pocket. This instrument is an adaptation of the well-known Bulls-Eye camera to the folding form and though not quite so compact as the Folding Pocket Kodaks, it is in every way an efficient and reliable camera, capable of the highest grade of work. Fitted with fixed focus, achromatic lens, set of three stops, socket for tripod screw and improved Rotary shutter described on page 4. Handsomely finished with fine grain leather covering.

Can be readily carried on the bicycle by use of our special clamps and the regular hand case.

No. 2 Folding Bulls-Eye Kodak, for $3\frac{1}{2} \times 3\frac{1}{2}$ pictures,	\$10.00
Transparent Film Cartridge, 12 ex., $3\frac{1}{2} \times 3\frac{1}{2}$,60
Do., 6 ex.,30
Do., Double-Two Cartridge, 4 exposures,20
Paper-Film Cartridge, 12 ex., $3\frac{1}{2} \times 3\frac{1}{2}$,40
Do., 6 ex.,20
Black Sole Leather Carrying Case, with strap,	1.25

No. 2 FLEXO KODAK.



For square pictures $3\frac{1}{2} \times 3\frac{1}{2}$ inches; capacity, 12 exposures without reloading; size of camera, $4\frac{3}{8} \times 4\frac{1}{2} \times 5\frac{7}{8}$ inches; weight, 19 ozs.; length of focus of lens, $4\frac{1}{2}$ inches.

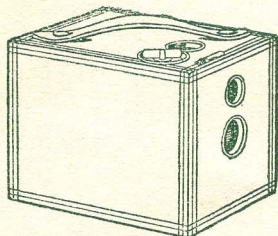
The No. 2 Flexo is a well-made instrument in every respect and is fitted with fixed focus achromatic lens, set of three stops, socket for tripod screw and our improved Rotary shutter, described on page 4.

Well made, covered with grain leather and handsomely finished.

Can be carried on bicycle by use of our special cases.

NOTE—The prospective purchaser should bear in mind that the price of the Flexo Kodak includes every requisite for taking pictures except the film, whereas the price of most of the so-called five-dollar plate cameras includes only one plate holder, and a further expenditure of \$2 or \$3 is necessary if it is desired to make more than two exposures between each trip to the dark room.

No. 2 Flexo Kodak, with achromatic lens, not loaded,	\$5.00
Transparent Film Cartridge, 12 ex., $3\frac{1}{2} \times 3\frac{1}{2}$,	.60
Do., 6 ex.,	.30
Do., Double-Two Cartridge, 4 exposures,	.20
Paper-Film Cartridge, 12 ex., $3\frac{1}{2} \times 3\frac{1}{2}$,	.40
Do., 6 ex.,	.20
Black Sole Leather Carrying Case with shoulder strap,	1.25
Kodak Portrait Attachment,	.50



No. 2
BULLS-EYE
KODAK.

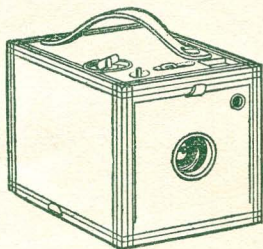
For square pictures $3\frac{1}{2} \times 3\frac{1}{2}$ inches; capacity, 12 exposures without reloading; size of camera, $4\frac{1}{2} \times 4\frac{1}{2} \times 5\frac{3}{4}$ inches; weight, 24 ounces; length of focus of lens, $4\frac{1}{2}$ inches.

Simple, practical and reliable, the Bulls-Eye is the prime favorite with hundreds of thousands of amateurs the world over. Though simple of manipulation, it is a high grade camera in every sense and capable of producing the very best results. Indeed, the No. 2 Bulls-Eye was the pioneer cartridge system camera, but by constant improvement it has been kept fully up-to-date and has more than retained its popularity.

Fitted with fixed focus, meniscus achromatic lens of the finest quality, set of three stops, brilliant finder, socket for tripod screw, and improved Rotary shutter described on page 4. Handsomely finished with fine seal grain leather covering and nicked fittings. Can be carried on bicycle by use of our special cases.

No. 2 Bulls-Eye Kodak, fitted with achromatic lens, not loaded,	\$8.00
Transparent Film Cartridge, 12 ex., $3\frac{1}{2} \times 3\frac{1}{2}$,	.60
Do., 6 ex.,	.30
Do., Double-Two Cartridge, 4 exposures,	.20
Paper-Film Cartridge, 12 ex., $3\frac{1}{2} \times 3\frac{1}{2}$,	.40
Do., 6 ex.,	.20
Black Sole Leather Carrying Case, with shoulder strap,	1.25
Kodak Portrait Attachment,	.50

No. 2
BULLS-EYE
SPECIAL
KODAK.



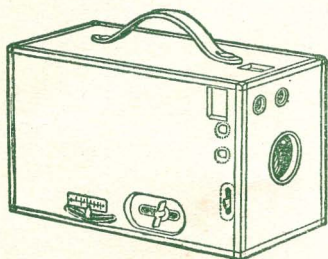
For square pictures, $3\frac{1}{2} \times 3\frac{1}{2}$ inches; capacity, 12 exposures without reloading; size of camera, $4\frac{1}{2} \times 4\frac{3}{8} \times 6\frac{3}{4}$ inches; weight, 28 ounces; length of focus of lens, $5\frac{3}{8}$ inches.

This instrument combines the extreme simplicity of the No. 2 Bulls-Eye with a shutter and lens of the finest quality.

It has the Eastman triple action shutter described on page 6, fitted with iris diaphragm stops graduated for Nos. 4 to 128, and no expense has been spared in fitting it with a lens of the finest quality. The lens has a fixed focus of $5\frac{3}{8}$ inches, is strictly rectilinear and very rapid, with wonderful depth and definition. Every lens being carefully tested by our own expert, the highest quality will be maintained.

This Kodak has square finder, socket for tripod screw, nickled fittings, is covered with fine black morocco and beautifully finished. Can be carried on bicycle by use of our special cases.

No. 2 Bulls-Eye Special Kodak, with rapid rectilinear lens, not loaded,	\$15.00
Transparent Film Cartridge, 12 ex., $3\frac{1}{2} \times 3\frac{1}{2}$,	.60
Do., 6 ex.,	.30
Do., Double-Two Cartridge, 4 exposures,	.20
Paper-Film Cartridge, 12 ex., $3\frac{1}{2} \times 3\frac{1}{2}$,	.40
Do., 6 ex.,	.20
Black Sole Leather Carrying Case with shoulder strap,	1.25
Kodak Portrait Attachment,	.50



No. 4
BULLS-EYE
KODAK.

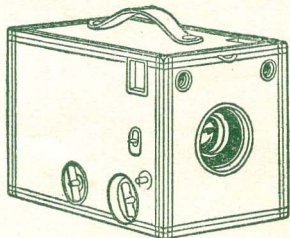
For rectangular pictures, 4 x 5 inches ; capacity, 12 exposures without reloading. Size of camera, 5 x 5 $\frac{7}{8}$ x 9 $\frac{1}{4}$ inches, weight, 2 pounds, 10 ounces ; length of focus of lens, 6 $\frac{1}{4}$ inches.

The No. 4 Bulls-Eye is fitted with an achromatic lens of superior quality, having a set of three stops ; has two brilliant finders, one for vertical and one for horizontal exposures ; and is also provided with two sockets for tripod screws, one for vertical and one for horizontal exposures. Fitted with our improved Rotary shutter, described on page 4, and has a carefully adjusted focusing scale. Handsome finish, nickel fittings, covered with fine seal grain leather.

In every way an efficient, convenient and reliable instrument and is capable of the best photographic work.

No. 4 Bulls-Eye Kodak, fitted with achromatic lens, not loaded,	. \$12.00
Transparent Film Cartridge, 12 ex., 4 x 5,	. .90
Do., 6 ex.,	.45
Do., Double-Two Cartridge, 4 exposures,	.30
Paper-Film Cartridge, 12 ex., 4 x 5,	.60
Do., 6 ex.,	.30
Black Sole Leather Carrying Case, with shoulder strap,	2.00

No. 4 BULLS-EYE SPECIAL KODAK.



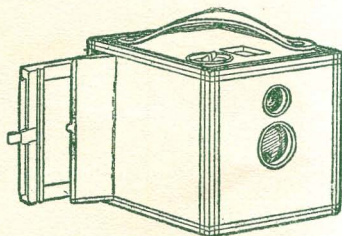
For rectangular pictures, 4 x 5 inches ; capacity, 12 exposures without reloading ; size of camera, 5 x 5 $\frac{7}{8}$ x 8 $\frac{3}{4}$ inches ; weight, 2 lbs., 12 ozs. ; length of focus of lens, 6 $\frac{1}{2}$ inches.

This instrument combines with the simplicity of the original No. 4 Bulls-Eye, a rapid rectilinear lens of superior quality and the Eastman triple action shutter, described on page 6.

Fitted with two finders, one for vertical and one for horizontal exposures, and two sockets for tripod screws and a carefully adjusted focusing scale.

The construction is of the strongest, the finish rich and elegant. The No. 4 Bulls-Eye Special is the most convenient of high-grade 4 x 5 cameras, and will be appreciated by those who demand the very best in camera construction, but prefer the box to the folding form. Covered with fine morocco with nicked fittings.

No. 4 Bulls-Eye Special Kodak, rapid rectilinear lens, Eastman triple action shutter, with iris diaphragm stops, not loaded,	\$20.00
Transparent Film Cartridge, 12 ex., 4 x 5,	.90
Do., 6 ex.,	.45
Do., Double-Two Cartridge, 4 exposures,	.30
Paper-Film Cartridge, 12 ex.,	.60
Do., 6 ex.,	.30
Black Sole Leather Carrying Case,	2.00



**No. 2
BULLET
KODAK.
FILMS AND
PLATES.**

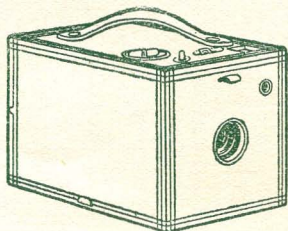
For square pictures, $3\frac{1}{2} \times 3\frac{1}{2}$ inches; capacity, 12 exposures without reloading; size of camera, $4\frac{5}{8} \times 4\frac{3}{4} \times 6\frac{1}{4}$ inches; weight, 26 ounces; length of focus of lens, $4\frac{1}{2}$ inches.

The Improved Bullet uses either roll films or glass plates the new model taking a DOUBLE PLATE HOLDER. (With plates the picture is $3\frac{1}{4} \times 3\frac{1}{2}$ inches.) Whether used for Film Cartridges or glass plates it is a complete and compact instrument of great capabilities. It is fitted with the finest fixed focus, meniscus achromatic lens, set of three stops, square, brilliant finder, socket for tripod screw, and has our improved Rotary shutter described on page 4.

Handsome finish, nickel fittings, covered with the finest black grain leather. Can be carried on bicycle by use of our special cases.

No. 2 Bullet Kodak, fitted with achromatic lens (not loaded),	. . .	\$10.00
Transparent Film Cartridge, 12 ex., $3\frac{1}{2} \times 3\frac{1}{2}$,60
Do., 6 ex.,30
Do., Double-Two Cartridge, 4 exposures,20
Paper-Film Cartridge, 12 ex., $3\frac{1}{2} \times 3\frac{1}{2}$,40
Do., 6 ex.,20
Double Plate Holders, $3\frac{1}{4} \times 3\frac{1}{2}$ each,	. . .	1.00
Black Sole Leather Carrying Case, with shoulder strap,	. . .	1.25
Kodak Portrait Attachment,50

No. 2 BULLET SPECIAL KODAK.



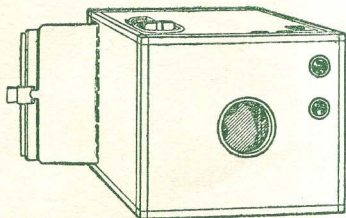
FILMS AND PLATES.

For square pictures, $3\frac{1}{2} \times 3\frac{1}{2}$ inches; capacity, 12 exposures without reloading; size of camera, $4\frac{3}{4} \times 4\frac{3}{4} \times 7\frac{1}{2}$ inches; weight, 2 lbs., 1 oz.; length of focus of lens, $5\frac{3}{8}$ inches.

This instrument combines the extreme simplicity of the Cartridge System with a shutter and lens of the finest quality and can be used with film cartridges or glass plates. (With plates it uses double holders and the picture is $3\frac{1}{4} \times 3\frac{1}{2}$ inches.) The shutter is the Eastman triple action described on page 6, and is fitted with iris diaphragm stops, Nos. 4 to 128.

The lens has a fixed focus of $5\frac{3}{8}$ inches, is strictly rectilinear and very rapid with wonderful depth and definition. Square finder, socket for tripod screw, covered with fine black morocco. Nickel fittings and beautiful finish. Can be carried on bicycle by use of our special cases.

No. 2 Bullet Special Kodak, with rapid rectilinear lens, (not loaded), . . .	\$18.00
Transparent Film Cartridge, 12 ex., $3\frac{1}{2} \times 3\frac{1}{2}$,60
Do., 6 ex.,30
Do., Double-Two Cartridge, 4 exposures,20
Paper-Film Cartridge, 12 ex., $3\frac{1}{2} \times 3\frac{1}{2}$,40
Do., 6 ex.,20
Double Plate Holders, $3\frac{1}{4} \times 3\frac{1}{2}$ each,	1.00
Black Sole Leather Carrying Case, with shoulder strap,	1.25
Kodak Portrait Attachment,50



No. 4 BULLET KODAK.

FILMS AND PLATES.

For rectangular pictures, 4 x 5 inches; capacity 12 exposures without reloading; size of camera, 5¼ x 6 x 9¾ inches; weight, 3 pounds; length of focus of lens, 6¼ inches.

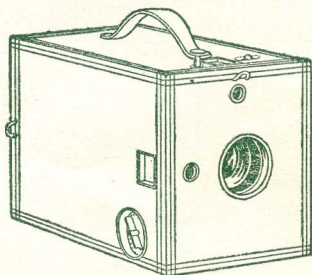
The No. 4 Bullet uses either roll films or glass plates, and it is fitted with an achromatic lens, set of three stops, two finders, one for vertical and one for horizontal exposures, focusing index, two sockets for tripod screw, and has our improved Rotary shutter, described on page 4.

Whether used for films or plates it is a most compact and convenient camera. When used with plates it may be focused either with the index or on the ground glass. Handsome finish, with nickel fittings, and covered with fine grain leather.

No. 4 Bullet Kodak, fitted with achromatic lens, not loaded,	\$15.00
Transparent Film Cartridge, 12 ex., 4 x 5,90
Do., 6 ex.,45
Do., Double-Two Cartridge, 4 exposures,30
Paper-Film Cartridge, 12 ex., 4 x 5,60
Do., 6 ex.,30
Single Plate Holders (4 x 5 inches), each,75
Black Sole Leather Carrying Case, with shoulder strap,	2.00

No. 4 BULLET SPECIAL KODAK.

FILMS AND PLATES.



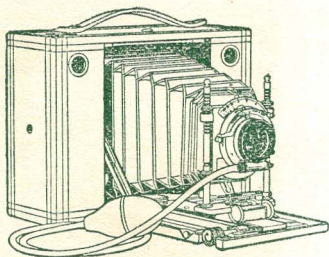
For rectangular pictures, 4 x 5 inches; capacity, 12 exposures without reloading; size of camera, 5½ x 6¼ x 10¾ inches; weight, including roll holder, 3 lbs., 12 ozs.; length of focus of lens, 6½ inches.

Adapted to either plates or film cartridges. Has the finest rapid rectilinear lenses, Eastman triple action shutter, described on page 6, fitted with iris diaphragm stops from No. 4 to No. 128. Unlike the other Kodaks the roll holder is detachable (the regular No. 4 Horizontal Cartridge Roll Holder), and being equipped with a dark slide is interchangeable with plate holders in the field and permits of focusing on the ground glass when using film.

Fitted with finders and tripod sockets for both vertical and horizontal exposures and has carefully adjusted focusing scale. Handsome leather covering, nickeled fittings.

No. 4 Bullet Special Kodak, for film or plates, including *Cartridge Roll Holder, and one Double Plate Holder, (not loaded),	\$25.00
Do., with one Double Plate Holder, but without Roll Holder,	20.00
Cartridge Roll Holder for No. 4 Bullet Special,	5.00
*4 inch Transparent Film Roll Holder Cartridge, 12 ex., 4 x 5,	.90
Double Plate Holders, 4 x 5 inches, each,	1.00
Black Sole Leather Carrying Case,	2.25

*This instrument does not use regular Kodak Cartridges but is fitted with an Eastman Cartridge Roll-Holder which uses our Roll-Holder Cartridges. These are made in 12 exposure lengths only.



THE CARTRIDGE KODAKS.

FILMS AND PLATES.

In perfection of detail, in mechanical excellence, in finish and in durability the Cartridge Kodaks have stood for years as the highest type in camera construction. They are the logical result of years of experience, a staff of expert mechanics and perfect facilities for manufacturing, combined with ample capital and a determination to make a better camera than had been made before. But we do not believe in standing still. There have been frequent improvements over the first models and in the latest production perfection seems to have been reached.

The new Cartridge Kodaks have an automatic clamp which locks the front board in position on camera bed, have rack and pinion for fine focusing and an extension bellows for use in copying and other close work and to permit of advantageous use of a tele-photo attachment. They have two tripod sockets, one for vertical and one for horizontal exposures, have two brilliant finders, focusing scale and rising and sliding front.

The simple and ingenious mechanism of the front must be of interest to every amateur photographer. After dropping the bed the front board is pulled out to the desired position by grasping

the clamps A-A. When they are released the front is clamped automatically in position. For fine focusing the rack and pinion may be used. A turn on the milled thumb-screw B unlocks the slide and the front board may be moved back and forth by means of the thumb-screw "C." For copying, or other close work the front may be extended by means of the rack and pinion to position shown in Fig. 3, page 24. The rising front is operated by pressing together on springs D. D. when front board may be run up or down to desired position and

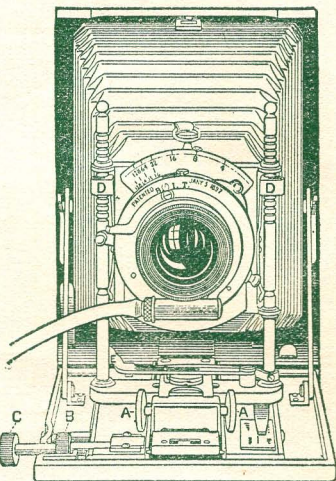


FIG. 2.
Detail of front.

locked by simply releasing springs. To operate the sliding front (rising and falling front when used for horizontal exposures) press forward lever E and slide front to desired point and press back on same lever to lock firmly in position.

The Cartridge Kodaks have our patent non-collapsing bellows, are made of a combination of wood and aluminum which gives the greatest strength and resistance to atmospheric conditions combined with lightness and compactness. All exposed metal parts, except the shutters, which are in part of brass, are heavily nicked, the exposed wooden parts are of selected mahogany, highly polished and the camera is covered with the finest black morocco. They may be used with glass

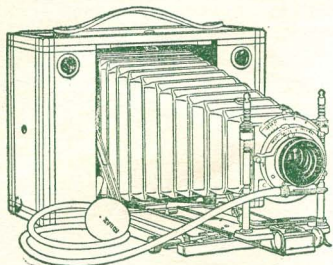


FIG. 3.
Showing extension front.

plates by the simple addition of adapter and plate holders and as plate cameras are compact and convenient and may be focused either by the scale or on the ground glass.

The lenses with which these instruments are regularly equipped are of the Double Rapid Rectilinear type, are very fast, are selected with the utmost care

and are subjected to rigid tests by our own experts. Wide angle lenses, the cells of which fit the regular shutter, may be had for either the No. 3, No. 4 or No. 5 Cartridge Kodaks. All Cartridge Kodaks have the Eastman Triple Action shutters fully described on page 6 and have iris diaphragm stops from No. 4 to No. 128, both inclusive.

They can be carried on a bicycle by the use of our special cases and notwithstanding their lightness are so strong and well made as to withstand all the ordinary rough usage to which a bicycle camera is subjected. They are, moreover, extremely popular with all tourists, with campers, hunters, canoeists and yachtsmen and have in the past three years, by their wonderful record in the campaigns in Cuba, Porto Rico, the Philippines, China and the Transvaal, fully demonstrated their durability and efficiency.

In short, the Cartridge Kodaks have in the superlative degree the "Kodak quality," a quality that has made the Kodak the standard the world over.

CARTRIDGE KODAK DETAILS.

No. 3 CARTRIDGE KODAK. Films and Plates.

For rectangular pictures, $4\frac{1}{4} \times 3\frac{1}{4}$ inches; capacity, 12 exposures without reloading; size, closed, $2\frac{3}{4} \times 5\frac{3}{4} \times 7\frac{1}{2}$ inches; weight, 2 lbs., 5 ozs.; length of focus of lens, 6 inches.

No. 4 CARTRIDGE KODAK. Films and Plates.

For rectangular pictures, 4 x 5 inches; capacity, 12 exposures without reloading; size of camera, $3\frac{1}{8} \times 6\frac{3}{8} \times 8\frac{1}{4}$; weight, 3 pounds; length of focus of lens, $6\frac{1}{2}$ inches.

No. 5 CARTRIDGE KODAK. Films and Plates.

For rectangular pictures, 7 x 5 inches; capacity, 12 exposures without reloading; size of camera, $3\frac{1}{4} \times 8\frac{1}{2} \times 10\frac{1}{8}$; weight, 4 pounds, 4 ounces; length of focus of lens, $8\frac{1}{2}$ inches.

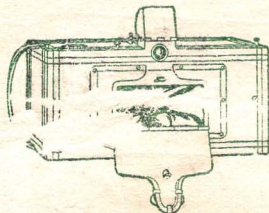
PRICE LIST.

	No. 3 $3\frac{1}{4} \times 4\frac{1}{4}$	No. 4 4 x 5	No. 5 5 x 7
*Cartridge Kodak with R. R. Lens and Eastman Triple Action Pneumatic Shutter (not loaded),	\$20.00	\$25.00	\$35.00
Transparent Film Cartridge, 12 ex.,	.70	.90	1.60
Do., 6 exposures,	.35	.45	.80
Do., Double-Two Cartridge, 4 ex.,	.25	.30	.55
Paper-Film Cartridge, 12 ex.,	.50	.60	1.00
Do., 6 exposures,	.25	.30	.50
Glass plate adapter with ground glass,	2.00	2.50	3.00
Double glass plate holders, each,	1.00	1.00	1.25
Wide angle lens,	5.00	5.00	7.50
Black Sole Leather Carrying Case,	1.50	2.00	2.50

*No. 3 Cartridge Kodak can be fitted with Unicum shutter and Bausch & Lomb Zeiss-Anastigmat lens No. 1, Series IIa, at an *extra charge* of \$31.00.

*No. 4 Cartridge Kodak can be fitted with Bausch & Lomb Iris diaphragm shutter and No. 2 Series II a, Zeiss Anastigmat lens at an *extra charge* of \$41.00.

*No. 5 Cartridge Kodak can be fitted with Bausch & Lomb Iris diaphragm shutter and No. 3 Series II a, Zeiss Anastigmat lens at an *extra charge* of \$50.50.



No. 1 PANORAM- KODAK.

USES No. 1 FOLDING POCKET KODAK CARTRIDGES.

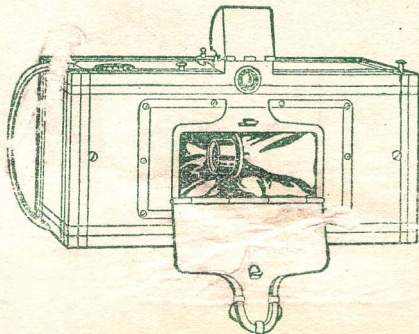
For pictures $2\frac{1}{4} \times 7$ inches; capacity, six exposures without reloading; size of camera, $3\frac{3}{4} \times 4\frac{1}{4} \times 7\frac{1}{2}$ inches; weight, 23 ozs.; length of focus of lens, 3 9-16 inches.

With a scope of view of 112° , the No. 1 Panoram-Kodak offers in compact and convenient form an instrument capable of taking panoramic views in all their breadth and beauty. Not only in the taking of broad land and seascapes, but for photographing out-door groups and for upright pictures of high waterfalls and lofty mountain peaks does this instrument open up new fields for photographic work. It will perfectly fill this niche in the photographers' outfit, but of course is not intended for interiors or time exposures.

This instrument has a carefully tested lens, improved two-speed shutter, spirit level, a brilliant finder which is part of the instrument itself and which, in connection with the V shaped lines on top of camera, gives the operator the full scope of view. Fitted with tripod socket, has nickeled fittings, is covered with the finest black morocco and is beautifully finished.

No. 1 Panoram-Kodak, not loaded,	\$10.00
Transparent Film Cartridge, 6 exposures, $2\frac{1}{4} \times 7$ (Regular No. 1 Folding Pocket Kodak Cartridge),	.40
Do., 3 exposures,	.20
Paper-Film Cartridge, 6 exposures, $2\frac{1}{4} \times 7$ (No. 1 Fold. Pocket Kodak Cart.),	.30
Do., 3 exposures,	.15
Black Sole Leather Carrying Case with shoulder strap,	1.75

No. 4 PANORAM- KODAK.



USES No. 4 BULLS-EYE CARTRIDGES.

For pictures $3\frac{1}{2} \times 12$ inches; capacity, 5 exposures without reloading; size of camera, $4\frac{7}{8} \times 5\frac{1}{2} \times 10\frac{1}{4}$ inches; weight, 2 lbs., 6 ozs.; length of focus of lens, 5 inches.

Broad landscapes, views of cities from high buildings, the intersections of wide streets, river and marine views—all offer to the photographer beautiful panoramic effects that are well worth preserving. It is to put into his hands an instrument capable of taking such views that we offer the Panoram-Kodak. It is not intended for interiors or time exposures.

The No. 4 Panoram-Kodak has a scope of view 142° , a carefully tested lens revolving through the arc of the circle and covering fully, and has our improved two speed shutter. Fitted with tripod socket, spirit level, brilliant finder which is part of the camera and which in connection with the V shaped lines on top of camera gives the operator the scope of view. Has nicked fittings, is covered with the finest black morocco and beautifully finished.

No. 4 Panoram-Kodak, not loaded,	\$20.00
Transparent Film Cartridge, 5 exposures, $3\frac{1}{2} \times 12$ (regular No. 4 Bulls-Eye Cartridges),	.90
Do., 2 exposures,	.45
Paper-Film Cartridge, 5 exposures, $3\frac{1}{2} \times 12$, (regular No. 4 Bulls-Eye Cartridges),	.60
Do., 2 exposures,	.30
Black Sole Leather Carrying Case, with strap,	2.00

KODAK CYCLE CASES.

Pocket Kodak Cases.

The Pocket Kodak Bicycle Carrying Case is made of the best black sole leather, and will hold, beside the Kodak, three extra spools of film. It attaches to the frame in much the same manner as a tool bag and may be carried suspended from the top bar of the machine, either at the head or at the seat post.

Price of Pocket Kodak Bicycle Case, \$1.00

Folding Pocket

Kodak Combination Cases.

Carrying Case, with shoulder strap, for No. 1, No. 2 A or No. 2 Folding Pocket Kodak (always specify in order whether for No. 1, No. 1 A or No. 2),	\$1.25
Clamp for carrying either of above cases on head of bicycle, (fits any tubing from $\frac{7}{8}$ to $1\frac{1}{4}$),50
Carrying Case, with shoulder strap, for No. 3 Folding Pocket Kodak,	1.25
Pair Clamps, for carrying above case on head of bicycle (fit any tubing from $\frac{7}{8}$ to $1\frac{1}{4}$),	1.00
No. 2 Folding Bulls-Eye Carrying Case with shoulder strap,	1.25
Pair Clamps for carrying above case on head of bicycle, (fit any tubing from $\frac{7}{8}$ to $1\frac{1}{4}$),	1.00

Style A Bicycle Cases.

Made of wood, cloth lined, leather covered, fitted with clamps to attach to head of bicycle. Springs on inside take up vibration of wheel and prevent injury to Kodak.

Bicycle Carrying Case, Style A, for No. 2 Bullet, Bulls-Eye, Flexo, Bullet Special and Bulls-Eye Special Kodaks,	\$2.00
Washers for holding Case in front of Brake Rod,	1.00
Detachable Lamp Bracket,25

In ordering specify instrument to be used with.

Style B Bicycle Cases.

Made of best black sole leather and fitted with straps which secure it firmly underneath saddle.

Price, Bicycle Carrying Case, Style B, for No. 2 Bullet, Bulls-Eye, Flexo, Bullet Special and Bulls-Eye Special Kodaks, . . . \$1.50

In ordering specify instrument to be used with.

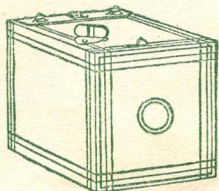
NOTE.—This case is impracticable for very short riders as it requires a space of 6 inches in the clear between the mud guard and the saddle spring.

Cartridge Kodak Bicycle Case.

This case is strongly made of wood, covered with fine grain leather, lined with cloth and fitted with springs on the inside which take up the vibration of the wheel and prevent injury to the camera. By means of two thumb screws which securely grasp the tubing, the case may be attached to the head of the machine or suspended from the top bar.

By means of a set of adjustable washers (extra) the case may be held far enough in front of the bicycle head to allow for the free passage of a brake rod. It may also be provided (extra) with a lamp bracket attachment. No wrench, screw driver or other tools are necessary in making the attachment.

No. 3 Cartridge Kodak Bicycle Case,	\$2.25
" 4 " " " " "	2.50
" 5 " " " " "	3.25
Washers for holding case in front of brake rod, per set,	1.00
Detachable Lamp Bracket,25



BROWNIE CAMERAS.

For square pictures, $2\frac{1}{4} \times 2\frac{1}{4}$ inches; capacity, 6 exposures without reloading; size of camera, $3 \times 3\frac{1}{8} \times 4\frac{7}{8}$ inches; weight, 8 ounces; length of focus of lens, $3\frac{3}{4}$ inches.

The Brownie Cameras are compact and perfect little instruments. They load in daylight with our six exposure film cartridges and are so simple that they can be readily operated by any school boy or girl.

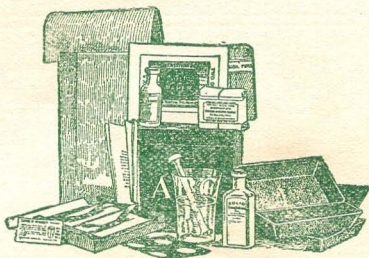
The Brownies are fitted with fine Meniscus lenses and our famous Rotary shutters, shown on page 4.

V shaped lines on top of camera give the scope of view, and the novice will soon be able to judge accurately by them just what will appear in the picture, or a Brownie Finder (detachable) may be provided for only 25 cents. The Brownies are strongly made, are covered with imitation leather and have nickeled fittings.

Forty-four page booklet giving full directions for operating the camera, together with chapters on "Snap-Shots," "Time Exposures," "Flash Lights," "Developing" and "Printing," free with every instrument.

Brownie Camera, for $2\frac{1}{4} \times 2\frac{1}{4}$ pictures,	\$1.00
Transparent film Cartridge, 6 exposures, $2\frac{1}{4} \times 2\frac{1}{4}$,15
Paper-Film Cartridge, 6 exposures, $2\frac{1}{4} \times 2\frac{1}{4}$,10
Brownie Finder, detachable,25
Brownie Developing and Printing Outfit,75

DEVELOPING AND PRINTING OUTFITS.



Eastman's A B C Developing and Printing Outfit includes every requisite for developing, printing and finishing 24 pictures 4 x 5, or 96 Pocket Kodak pictures, also the most economical outfit for $2\frac{1}{2}$ x $4\frac{1}{4}$ and $3\frac{1}{4}$ x $4\frac{1}{4}$ pictures.

It Contains:

1 Eastman Improved Candle		$\frac{1}{2}$ oz. Bromide Potassium,	\$0.10
Lamp,	\$0.25	2 doz. 4 x 5 Solio Paper,	.25
1 4 x 5 Printing Frame,	.25	2 ozs. Solio Toning Solution,	.15
" Glass for do.,	.05	1 oz. Glycerine,	.05
1 Glass Beaker,	.12	Mask for making Pocket Kodak	
1 Stirring Rod,	.05	Medallions,
4 $4\frac{1}{2}$ x $5\frac{1}{2}$ Developing Trays,	.40	Instruction Book,	.10
$\frac{1}{2}$ doz. Developing Powders,	.25		
$\frac{1}{2}$ lb. Hyposulphite Soda,	.07		
			\$2.09
<u>Price, complete, neatly packed,</u>			<u>\$1.50</u>

Eastman's Bulls-Eye Developing and Printing Outfit, complete for developing and printing 12 pictures $3\frac{1}{2}$ x $3\frac{1}{2}$. Similar to above outfit, but including 1 dozen $3\frac{1}{2}$ x $3\frac{1}{2}$ Solio paper, instead of 2 dozen 4 x 5, and containing smaller quantities of chemicals.

Price, complete, neatly packed, . . . \$1.00

Eastman's Special 5 x 7 Developing and Printing Outfit, complete for developing and printing 24 pictures 5 x 7. Similar to 4 x 5 outfit, but having 5 x 7 trays, paper, etc.

Price, complete, neatly packed, . . . \$2.00

Brownie Developing and Printing Outfit, complete for developing 24 Brownie negatives and printing on Dekko paper.

Price, complete, neatly packed,75

NOTE.—These outfits cannot be shipped by mail.

DIN-1362

ASK at the dealer's for the "Witchery of Kodakery," our handsomely illustrated, 64 page catalogue of Kodaks and Kodak supplies. Free at the dealer's or by mail.

TERMS.

The prices in this booklet are strictly net, except to regular dealers who carry our goods in stock.

For the convenience of our customers we recommend that they make their purchases from a dealer in photographic goods, as by so doing they can save both time and expressage.

EASTMAN KODAK CO.

Rochester, N. Y.

DIN-1362

JOHN M. DEAN CO.

793 WESTMINISTER ST.

PROVIDENCE, R. I.

