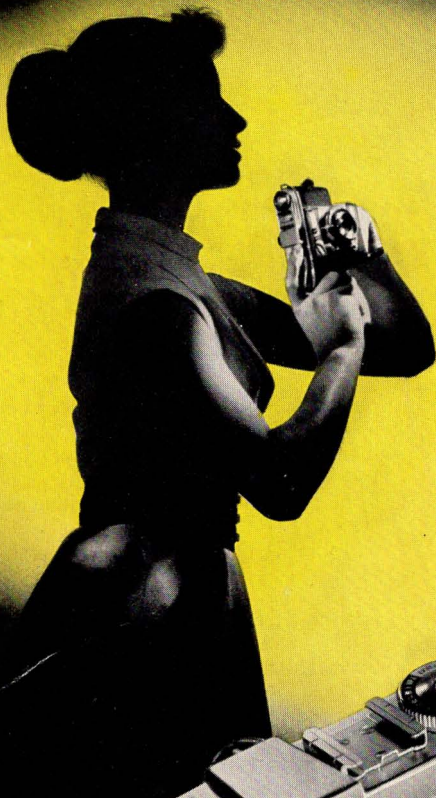


K o d a k

Retina 16



T H E R E T I N A S Y S T E M

Retina 1b

... a versatile camera

In the hustle and bustle of this modern age we really come to value the big as well as the little pleasures of life. Unfortunately the happy hours in store for us pass much too quickly. Yet we can capture them – not just in our memory, which gets fainter as time goes on, but with a RETINA; with the RETINA 1b in fact.

For the RETINA 1b enriches your life. This universal miniature camera is always at your service – for family snapshots or sports pictures, on the race course and at happy anniversaries, during enjoyable holidays or quiet spare time hours. It is modern in style, beautiful in shape, and handy in use. Its special design, consistently high precision, and technical equipment ensure pin-sharp pictures. It is certain in operation, quick in action, and always reliable.

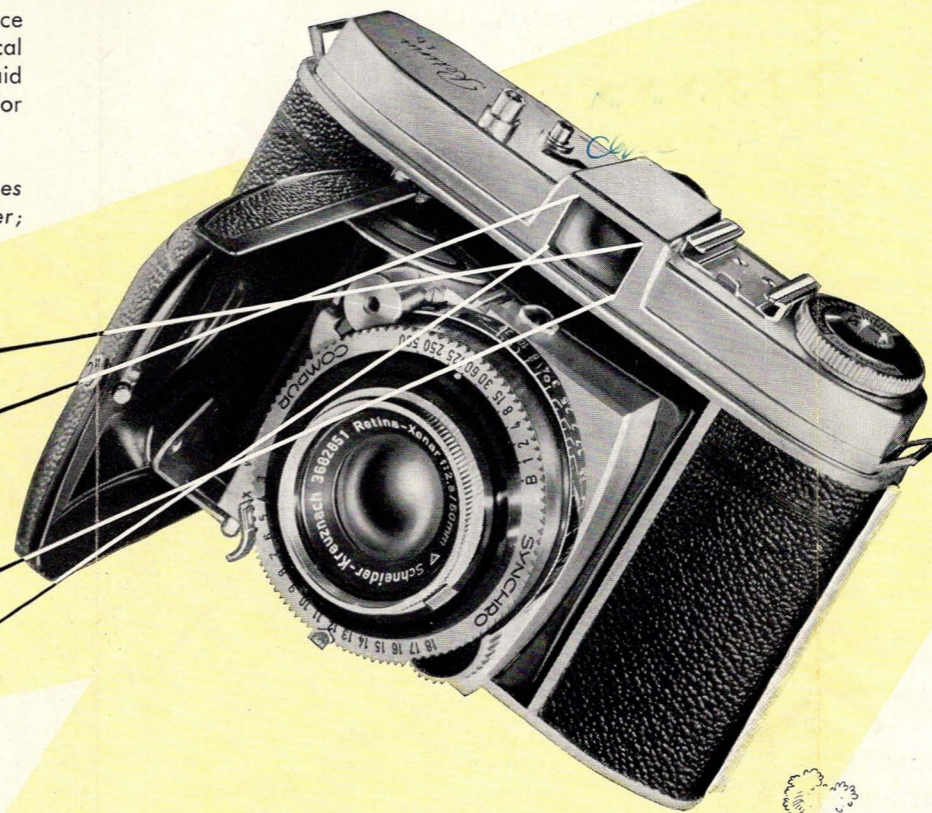
The RETINA 1b combines many years of experience in camera design with the most advanced optical and scientific research. You will find in it every aid to outstanding performance and every feature for simplest operation:

- The new Synchro-Compur shutter with light values (coupled aperture and speed settings) and self-timer;

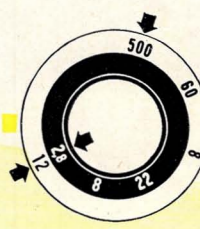
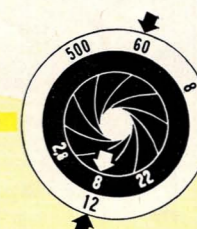
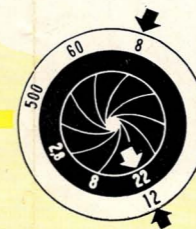
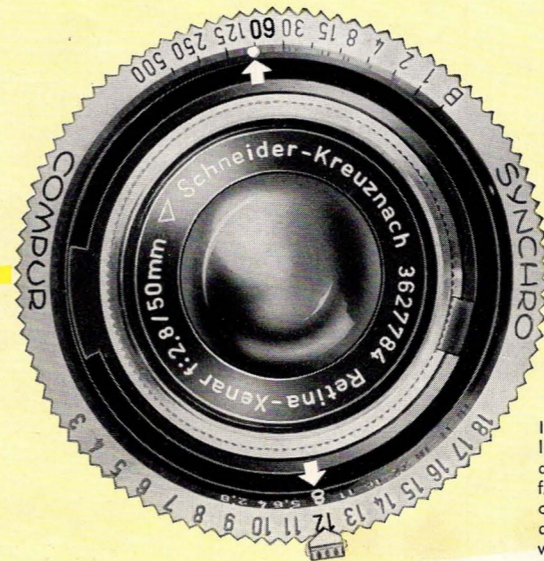


- The fast high-quality RETINA-Xenar 2 inch (50 mm.) f/2.8 lens;
- The large, bright finder with reflected image frame;
- The collapsible lens panel, locking absolutely rigid;
- The rapid winder, film counter, double exposure lock, body release, protective baseboard, and many other features.

The name Kodak is your guarantee of the perfected design and outstanding performance of the RETINA 1b miniature camera. The brilliant RETINA pictures will be constant memories of unrepeatable precious occasions. You only have to see them to feel sure you have chosen wisely.



The Coupled Aperture-speed Settings



If you need great depth of field, you only have to turn the setting ring until the aperture lever set to the light value (e. g. 12 in this case) is opposite f/22 on the aperture scale. This adjusts the shutter speed to 1/8 second (see illustration, left). When you want to shoot at f/8, the shutter speed automatically becomes 1/60 second (see illustration, centre). On the other hand, if the subject calls for the fastest shutter speed, setting the shutter to 1/500 second at the same time opens up the aperture to f/2.8 (see illustration, right). You don't have to waste time working out shutter speeds at different apertures and vice versa – the shutter of the RETINA does it for you!

The Line Frame Finder

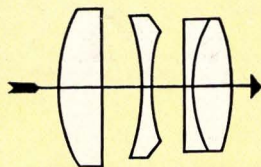
of the RETINA 1b quickly and positively shows the correct field of view before and during the exposure, as this large viewfinder incorporates a brilliant reflected image frame. Parallax correction marks on this frame take care of any parallax errors with subjects between 3 and 6½ feet from the camera.

The Collapsible Lens Panel

locks open absolutely rigid and thus helps to make the most of the high quality of the RETINA lens. Yet it is easily released and gently slides back into the camera body on closing the baseboard. When closed, the latter protects the valuable lens against injury.

Setting the Exposure

is particularly easy with the RETINA 1b. You only have to adjust one setting – the light value – as aperture and shutter speed are coupled with each other. Thus one light value ensures correct exposure with free choice of aperture or shutter speed.

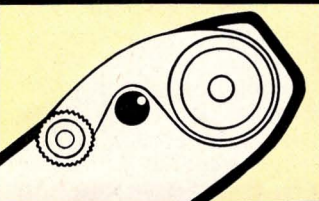
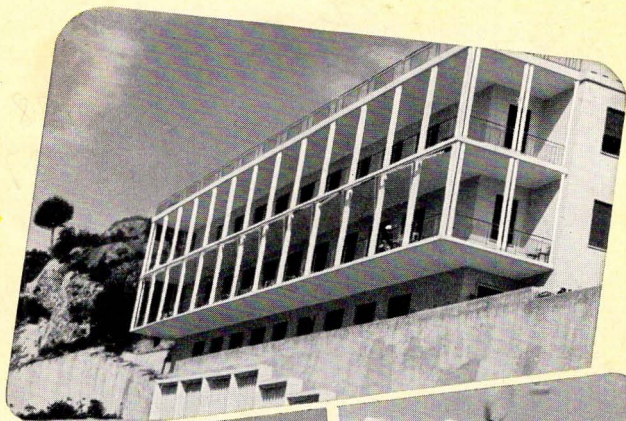


4

The RETINA-Xenar f/2.8

The fast lens of the RETINA is fully corrected and yields images of extraordinary resolution. The hard coating, specially adapted to the requirements of colour film, makes the RETINA 1b an ideal camera for colour shots.

4

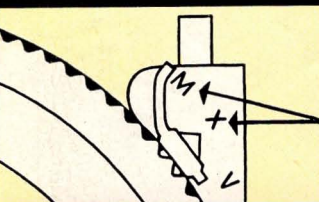
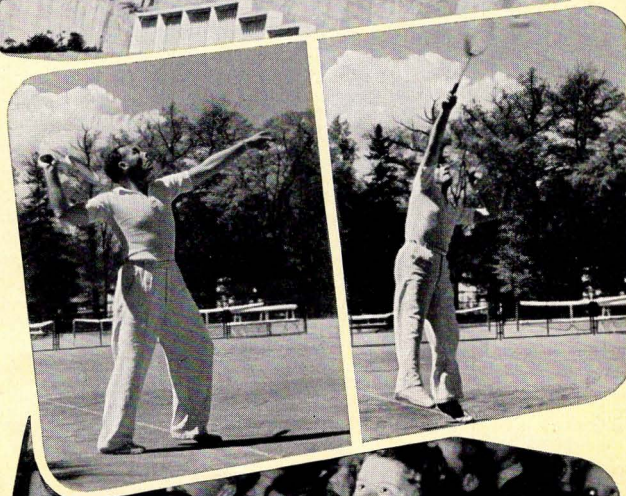


5

The Rapid Winding Lever

Real action shots demand instant readiness at the right moment. The RETINA 1b with its well-tried rapid winding mechanism will cope with the most difficult situations. One movement transports the film, tensions the shutter, and advances the film counter.

5

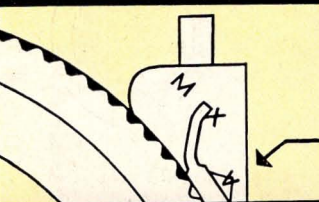


6

Speed-synchronization

With the RETINA 1b you have no lighting problems. If the available light is inadequate, the Kodablitz takes over. The RETINA shutter is speed synchronized for flash bulbs and electronic flash units alike up to the fastest shutter speed.

6



7

The Self-timer

The new Synchro-Compur shutter also features a built-in self-timer for those occasions when you want to be in your own picture. That proves you were there, too, and increases the value of the photograph, not to mention the fun of taking it.

7



*Hilbrunn
Warthburg Str. 33*
... still more scope with

*Right
after bridge*
ACCESSORIES

Countless RETINA enthusiasts the world over appreciate the outstanding performance and absolute reliability of their camera. They equally value the versatility based on the comprehensive RETINA system of equipment, for the wide range of accessories greatly extends the scope of this popular camera:

- **The Lens Hood and Filters** are indispensable for making good pictures. The lens hood screens off disturbing stray light, while the filters correct or modify the tones and contrasts of black-and-white shots.
- **The Kodalux L** photo-electric exposure meter determines the correct light value as well as aperture and shutter speed throughout its great measuring range, and can be used for incident light or reflected light readings.
- **The Retina Frame Finder Model B** is specially suitable for fast moving action subjects. It incorporates parallax compensation, and is suitable, in conjunction with the supplementary N-lenses, for close-ups down to about 12 inches.
- **The Kodablitz** is a handy and efficient capacitor flash gun with a special grained reflector yielding a soft flood of light.
- **The Close-up Rangefinder** with two supplementary N-lenses covers a close-up focusing range from 38 down to 11½ inches (97 to 29 cm.).
- **The Close-up Attachment with the R-lenses** covers large close-ups of small objects like jewellery, small animals, and action subjects at four near distances down to 6 inches. It is also suitable for copying originals from 4 x 5¾ inches to 1½ x 2 inches (10 x 15 to 3.7 x 5 cm.), in size.
- **The Table Stand** solidly supports the RETINA for all shots requiring long time exposures, and is particularly useful in conjunction with the close-up rangefinder and the close-up attachment.
- **The Copying Stand** is specially designed for the copying of documents, drawings, and prints in the sizes 5¾ x 8 and 8 x 11½ inches approx. (15 x 20 and 20 x 30 cm.).
- **The Micro-adapter** enables the RETINA to take photomicrographs in black-and-white or colour.

FOTO-GUSE
STUTTGART-N
FRIEDHOFSTR, 61
TELEFON 83871

KODAK AG · STUTTGART-WANGEN