



*Leads to
pictures bigger
than itself*

**KODAK
BANTAM**

KODAK

Small as the palm of your hand.

Weights only seven ounces

Slips into vest pocket or handbag.

Loads with a 20-cent roll of film.

WITH VERSATILE
KODAK ANASTIGMAT f.6.3 LENS, ONLY
WITH KODAK DOUBLET LENS, ONLY \$5.75

\$9.75

KODAK

BANTAM

Small as the palm of your hand. . . . Yet Kodak Bantam brings you pictures bigger than itself. Newly perfected finishing equipment and methods give you large-size prints...at very reasonable cost. And the pictures are outstandingly good, for you have at your command a really fine lens...Kodak Anastigmat *f*.6.3. It provides picture quality that satisfies even the critical user.

Weights only seven ounces Naturally such a tiny, feather-weight camera...and such a good one...will go wherever *you* go. Yet extremely small size is only one of its features. Touch a button...it opens for action. Aim through the optical direct-view finder and "shoot." That's all there is to it. Picture taking with the Bantam is a new and fascinating game.

Slips into vest pocket or handbag. . . . And out just as easily...ready in an instant for any and every picture situation. The Bantam is the most compact Kodak ever built...and one of the simplest. Fixed focus, fixed shutter speed, and fast, fine-grained Panatomic Film cancel all ordinary exposure problems. Though it has great picture-taking ability, Kodak Bantam is as easy to use as a box camera.

Loads with a 20-cent roll of film. . . . Eight exposures for 20 cents mean low operating cost. And you don't even watch the numbers while winding the film. It stops itself, and pictures are always centered.

(See back page for further details.)



WITH VERSATILE
KODAK ANASTIGMAT *f*.6.3 LENS, ONLY
WITH KODAK DOUBLET LENS, ONLY \$5.75

\$9.75

KODAK

BANTAM

KODAK BANTAM

Kodak Bantam has body of black, molded material, with permanent glossy finish. Size of camera body, only $4\frac{3}{8} \times 2\frac{1}{4} \times 1\frac{1}{8}$ inches.

Kodak Bantam, with Kodak Anastigmat *f.6.3* lens, instantaneous and "time" actions, optical eye-level finder. . . \$9.75

Kodak Bantam, with Kodak Doublet lens, instantaneous and "bulb" actions, folding eye-level finder. \$5.75

Kodak Panatomic Film No. F828 (8 exposures) \$.20

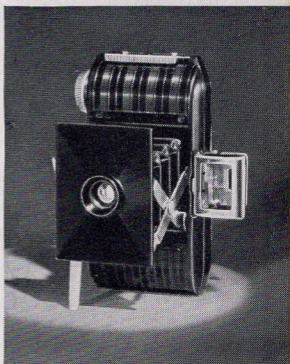
Cable Release No. 30 (for either camera) \$.35

Kodak Portrait Attachment No. 8 (for either camera) \$.75

Black morocco-grain leather carrying case, with glove-button fastener, removable handle, slits for attaching to belt (for either camera) \$1.25



F.6.3 model and carrying case



Doublet model with folding finder

The Camera Shop
320 South Fifth St.
SPRINGFIELD, ILL.