



PHOTOGRAPHIC CATALOGUE

Hidderley Radio Sales

48 St Petersgate STOCKPORT

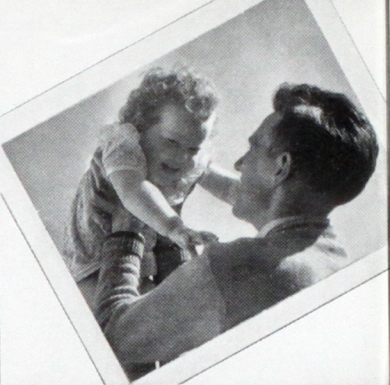


PHOTOGRAPHIC

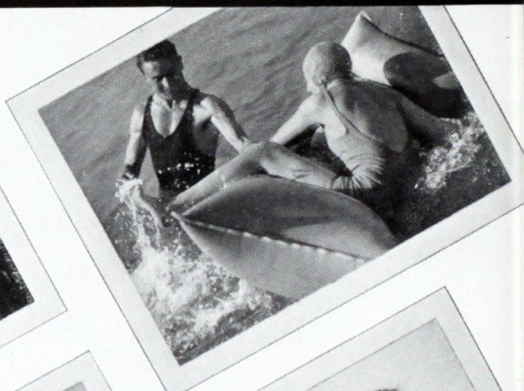


CATALOGUE 1936

Prices, descriptions and illustrations of the goods in this catalogue are correct at the time of going to Press, but all are subject to variation without notice.



THE WORLD - YOUR WORLD -



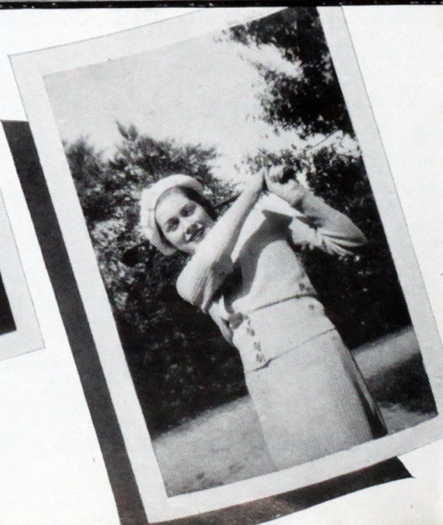


IS FULL OF PICTURES

This booklet is full of most interesting information about picture-taking. Whatever you see here that interests you, ask to see it at our counter.



We shall be glad to demonstrate any camera, explain any point you wish, give you good advice on anything connected with picture-taking. Finally, we can develop and print your pictures expertly and with speed, and make you enlargements that you will pride yourself on as real pictures.



BABY "BROWNIE"

A real "Kodak" Camera for 5/-

PICTURE SIZE— $2\frac{1}{2} \times 1\frac{5}{8}$ INCHES. KODAK FILM NO. 127

FIRST comes the Baby "Brownie"—first for sheerest simplicity and lowest cost. A Kodak-made camera, with all that means in care-free photography, for only *five shillings!* Up-to-the-minute in style, Baby "Brownie" is the simplest of all real cameras, the camera for beginners of all ages.

The tested Kodak fixed-focus lens gives wonderfully clear pictures at all distances *from 5 ft. to the horizon.* There is no focussing to bother with. The picture size is $2\frac{1}{2} \times 1\frac{5}{8}$ inches—see opposite for examples of Baby "Brownie" snaps—and it takes eight on every spool. Fine enlargements can be made from Baby "Brownie" negatives.

Reliable rotary shutter for snapshots. Eye-level viewfinder fitted on top of camera—you look straight at the subject when you take aim; viewfinder folds down flush with camera between pictures.

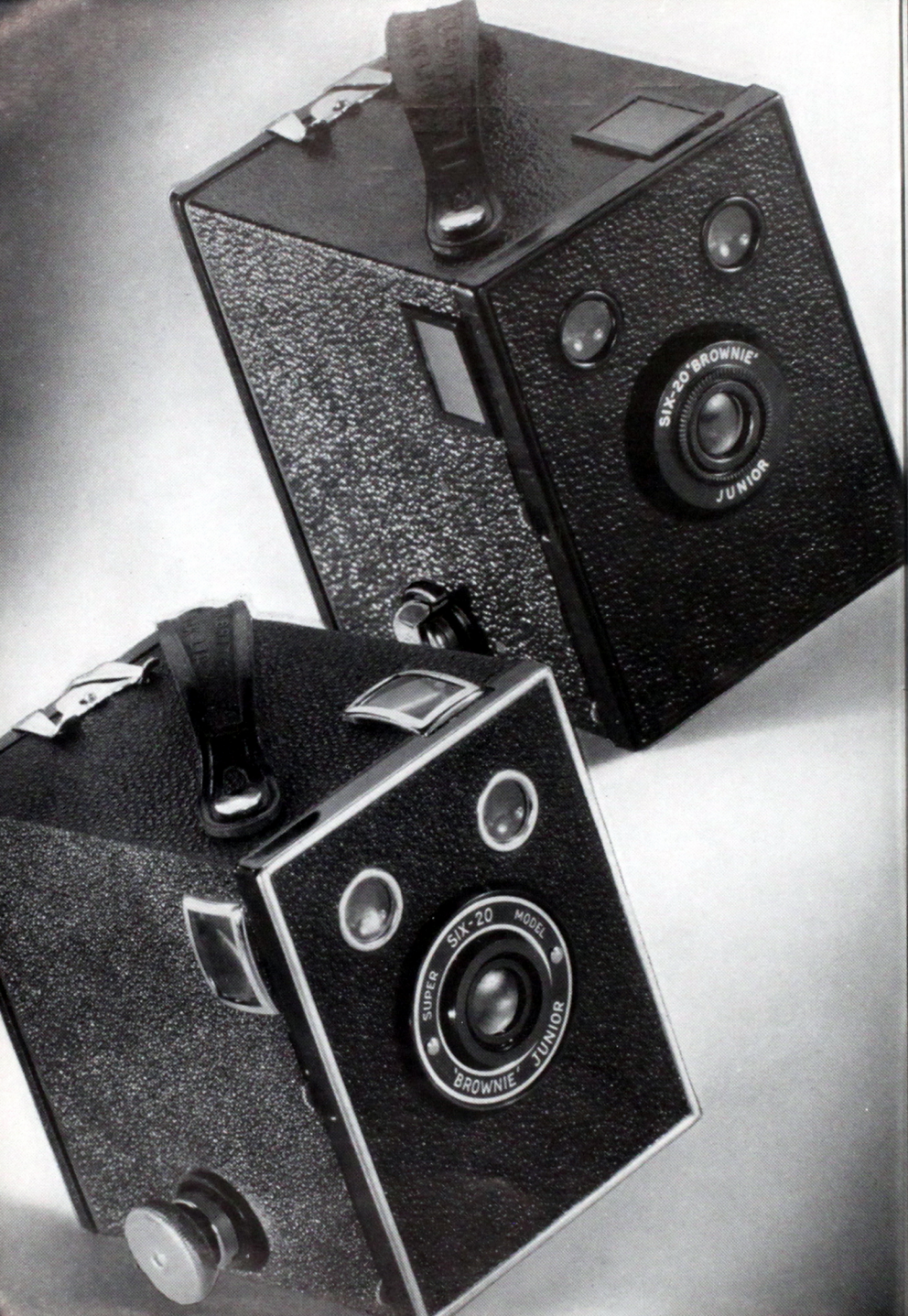
Baby "Brownie" is a handsome little handful. It has a smoothly "streamlined" moulded body and a smart finish in black glossy enamel.



BABY "BROWNIE" 5/-

FOR KODAK FILM SEE PAGES 36-38

FOR CARRYING CASES SEE PAGE 45



SIX-20 "BROWNIES"

SIX-20 "BROWNIE" JUNIOR

PICTURE SIZE— $3\frac{1}{4} \times 2\frac{1}{4}$ INCHES. KODAK FILM NO. 620

THE smallest, lowest-priced "Brownie" taking $3\frac{1}{4} \times 2\frac{1}{4}$ -inch pictures. Shutter gives Time exposures as well as snapshots. Two extra large reflecting viewfinders make "sighting" easy. Hinged back for quick, easy loading. Strong all-metal body. Very compact.

SIX-20 "BROWNIE" JUNIOR 8/6

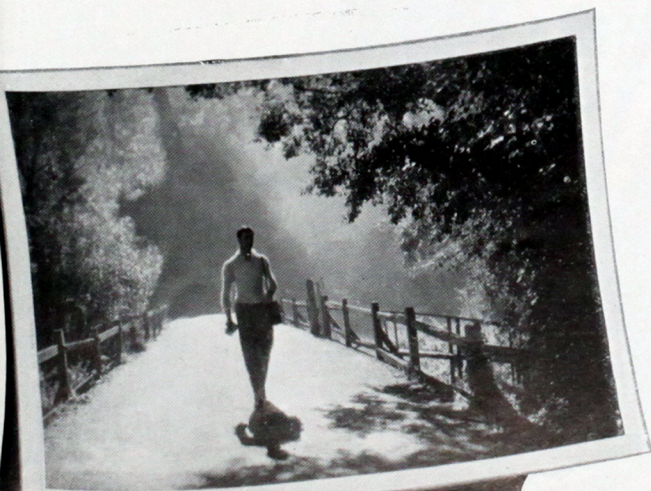
SIX-20 "BROWNIE" JUNIOR (SUPER MODEL)

PICTURE SIZE— $3\frac{1}{4} \times 2\frac{1}{4}$ INCHES. KODAK FILM NO. 620

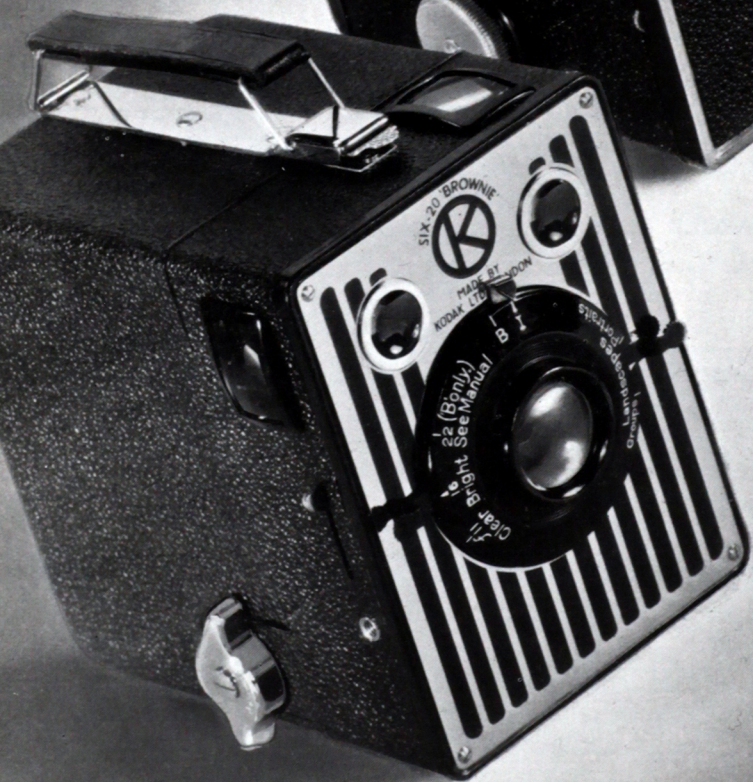
A "BROWNIE" with several refinements which make for still easier, smoother picture-taking. Two large "crowned" viewfinders, for example, give especially clear, brilliant images of the subject and make it very easy to see exactly what you are taking. And there is an extra-handly milled-edged winding disc for winding on the film. Tested Kodak Lens in reliable shutter (snapshots and "time"). Hinged back. Extra smart finish in pebble-grained leatherette and polished nickel.

SIX-20 "BROWNIE" JUNIOR (SUPER MODEL) 12/6

FOR KODAK FILM SEE PAGES 36-38 FOR CARRYING CASES SEE PAGE 45



This is the size of picture made by the Six-20 "Brownie" Junior and the Super Model.



'PORTRAIT' MODELS



SIX-20 PORTRAIT "BROWNIE"

PICTURE SIZE— $3\frac{1}{4} \times 2\frac{1}{4}$ INCHES. KODAK FILM NO. 620

THIS new 1936 model enables you to take clear, sharp "close-ups"—head-and-shoulder portraits—as well as ordinary views—and so quickly! You know how frequently and effectively the "close-up" is used at the movies; now you can give your own snaps variety and extra interest in the same way. No extra lens attachment needed—the extra portrait lens is built-in—you just pull out a special lever before you snap.

"Close-ups" at the touch of a lever.

The shutter gives "Time" and snapshot exposures. There are two large brilliant viewfinders—"crowned" to make viewing easier; the back is hinged for easy loading; and the camera is smartly finished in black enamel and nickel.

SIX-20 PORTRAIT "BROWNIE" 17/6

SIX-20 "BROWNIE"

PICTURE SIZE— $3\frac{1}{4} \times 2\frac{1}{4}$ INCHES. KODAK FILM NO. 620

THE cleverest "Brownie" of all; takes sharp pictures all the way from "infinity" (distant view) to "close-ups"—portraits at $3\frac{1}{2}$ feet. Simply switch a lever to the word "Landscape" or "Group" or "Portrait" as the case may be, marked on the front of the camera, and click the exposure lever—that's all. It also tells you which lens stop to use in different kinds of light.

Tested Kodak lens (*f*11). Easy loading—no loose parts to hold. Two large "crowned" viewfinders give brilliant images. Front of shining stainless metal with black striped design—a brilliant finish for a brilliant "Brownie".

SIX-20 "BROWNIE" 21/-

FOR KODAK FILM SEE PAGES 36-38 FOR CARRYING CASES SEE PAGE 45

Some things we'd like you to know about the

LENSES & SHUTTERS

fitted to the "Kodak" models shown in this booklet

THE LENS is the most important part of any camera. On it depend the scope of your picture-taking and the quality of your pictures.

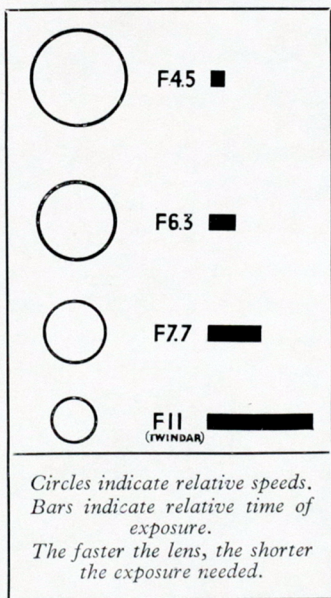
HOW LENSES DIFFER. Pictures are made by the light that the lens lets through during the fraction of a second that the shutter clicks open and shut.

The more light a lens can admit in this instant the "faster" it is said to be, and the more independent it makes you of lighting conditions.

On a bright summer day, any Kodak lens will take perfectly exposed pictures. On dull days or indoors the fast lens has the advantage because it can still let in enough light to make good pictures, even with snapshot exposures.

HOW TO TELL THE SPEED OF A LENS. The speed of a lens is reckoned by the size of its largest stop. These stops, or *"f"* numbers, are always marked round the lower half of the shutter on folding cameras—see pictures on opposite page. The *smaller* the *"f"* number the *faster* the lens. For example, an *f6.3* lens (that is, one whose largest stop is *f6.3*) is faster than an *f8* lens. *f4.5* is faster than *f6.3*, and so on.

The fast lens demands high precision in the making and naturally costs more; in spite of this, modern scientific methods of production have enabled fast lenses of the best type (Anastigmats) to be fitted to "Kodaks" of very moderate price, as the following pages show.



* The *"f"* rating of a lens is the figure arrived at by dividing the focal length by the diameter. The speed varies as the *square* of the *"f"* number; e.g. *f4.5* is approximately twice as fast as *f6.3*.

THE SHUTTER comes next in importance to the lens, the two together forming the actual picture-taking combination.

The shutter controls the length of *time* during which light passes through the lens to make a picture, just as the lens itself controls the *amount* of light. The quicker the shutter the more rapidly the subject can move without the picture being blurred.

On nearly all folding "Kodaks" the shutters provide you with a range of speeds; slow ones for views and groups, faster ones for restless subjects such as children and animals.

Examples of shutters fitted to inexpensive "Kodaks" are shown on the right. ("Kodon" and O.P.S.)

More advanced amateurs will appreciate the very wide range of automatic speeds provided by the famous "Compur" Shutter (also shown on the right), which is fitted to all the highest-grade fast-lens "Kodaks". Split-second speeds up to $1/250$ th, and in some cases up to $1/400$ th or $1/500$ th second, according to the model, enable you to get sharp pictures of quickly moving sports subjects, etc.

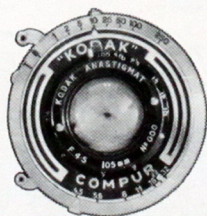
An ingenious Delayed Action device is built into certain shutters (O.P.S. and "Compur"). This enables you, after setting the shutter, to get into position in front of the camera before the exposure is made—a decided advantage if there is no one else to take your picture or if you want to include yourself in a group.



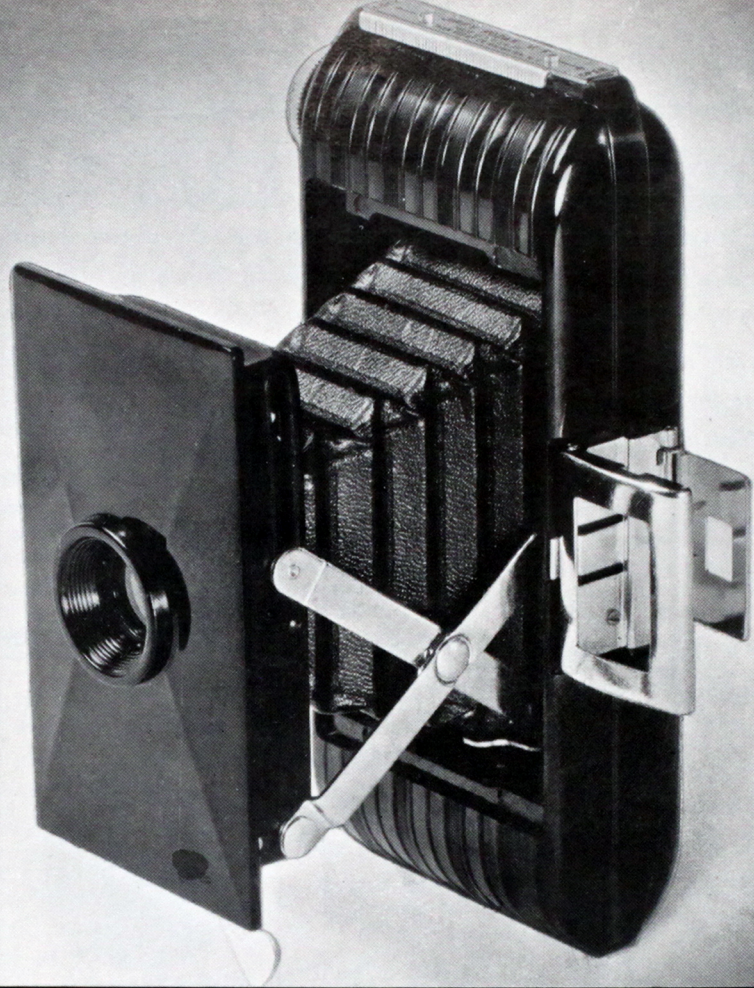
"KODON" SHUTTER



O.P.S. SHUTTER



COMPUR SHUTTER



JIFFY "KODAK" V.P.

A folding "Kodak" for 25/-

PICTURE SIZE— $2\frac{1}{2} \times 1\frac{5}{8}$ INCHES. KODAK FILM NO. 127

THE new Jiffy V.P. (Vest Pocket) is as good as its word. It really will slip into a waistcoat pocket and it really does open in a jiffy. Press a button on the side and the camera "jumps to it" with surprising speed—the front flies open and you are all ready for pictures in a small fraction of a second. Click a lever and the picture is yours. Snapshot simplicity could hardly go further.

The Doublet lens requires no focussing. The simple-working shutter gives "Brief Time" exposures as well as snapshots. Sighting the subject is made very easy by the direct-vision eye-level viewfinder; this folds flat against the side of the camera between exposures.

Designed by Walter Dorwin Teague—one of the world's foremost industrial artists—the Jiffy V.P. looks as good as it is. The light but strong body of black moulded material has a delightful glossy black finish, broken only by ornamental raised ribbing.

So much for so little—only 25/-—it's wonderful news! Ask us to show you the Jiffy V.P.

JIFFY "KODAK" V.P. 25/-

OTHER VEST POCKET "KODAKS"

Kodak cameras taking the same size pictures but fitted with faster lenses, multi-speed shutters, and more advanced equipment, are also available.

VEST POCKET "KODAK" SERIES III

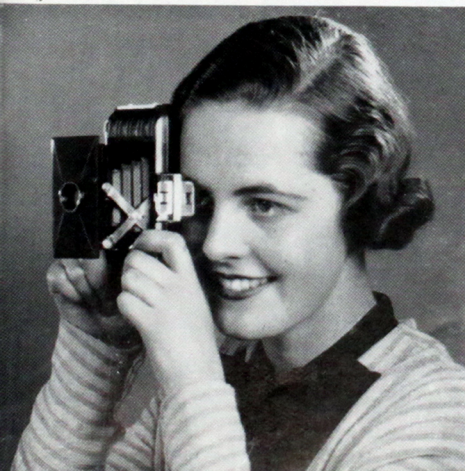
With "Kodak" Lens f7.9 and
"Kodex" Shutter £2 2 0
Other models, according to lens
and shutter, up to 5 5 0

VEST POCKET KODAK SPECIAL

With Kodak Anastigmat f5.6 Lens
and 4-speed "Diomatic" Shutter £3 10 0
Other models, according to lens
and shutter, up to 10 2 6

FOR KODAK FILM SEE PAGES 36-38

FOR CARRYING CASES SEE PAGE 45



SIX-20 "KODAKS" JUNIOR

PICTURE SIZE— $3\frac{1}{4} \times 2\frac{1}{4}$ INCHES. KODAK FILM NO. 620

The World's Standard Folding Cameras

THE Six-20 "Kodaks" Junior are distinguished by their extreme compactness, entire simplicity, and surprisingly low cost.

A single swift movement opens the camera ready for picture-taking; the "Kodaks" Junior waste no time in getting into action.

The "Twindar" Lens reduces focussing to its simplest terms. There are only three focussing positions—"5-8 feet", "8-15 feet", and "beyond 15 feet". The faster $f7.7$ and the still faster $f6.3$ Kodak Anastigmat Lenses, which take sharp clear pictures over a wider range of lighting conditions as explained on page 10, can be focussed from 5 feet to "infinity".

The "Kodon" Shutter gives three speeds— $1/25$ th, $1/50$ th, and $1/100$ th second. These speed markings, together with the "stop" numbers $f6.3$, $f8$, $f11$, etc. appear on top of the shutter as well as on the front, so that you can make adjustments without moving the camera from the "ready" position.

Reflecting viewfinders are fitted on all models.

The two tripod sockets, one for upright and one for horizontal pictures, are plugged with dust-excluding screws which can be removed in an instant by means of a coin.

SIX-20 "KODAK" JUNIOR, DE LUXE

BEAUTIFUL little model, equipped with Kodak Anastigmat $f6.3$ Lens in "Kodon" Shutter, two viewfinders, direct and reflecting, two tripod sockets. Unusually smart finish in black-grained, figured leatherette and polished nickel.

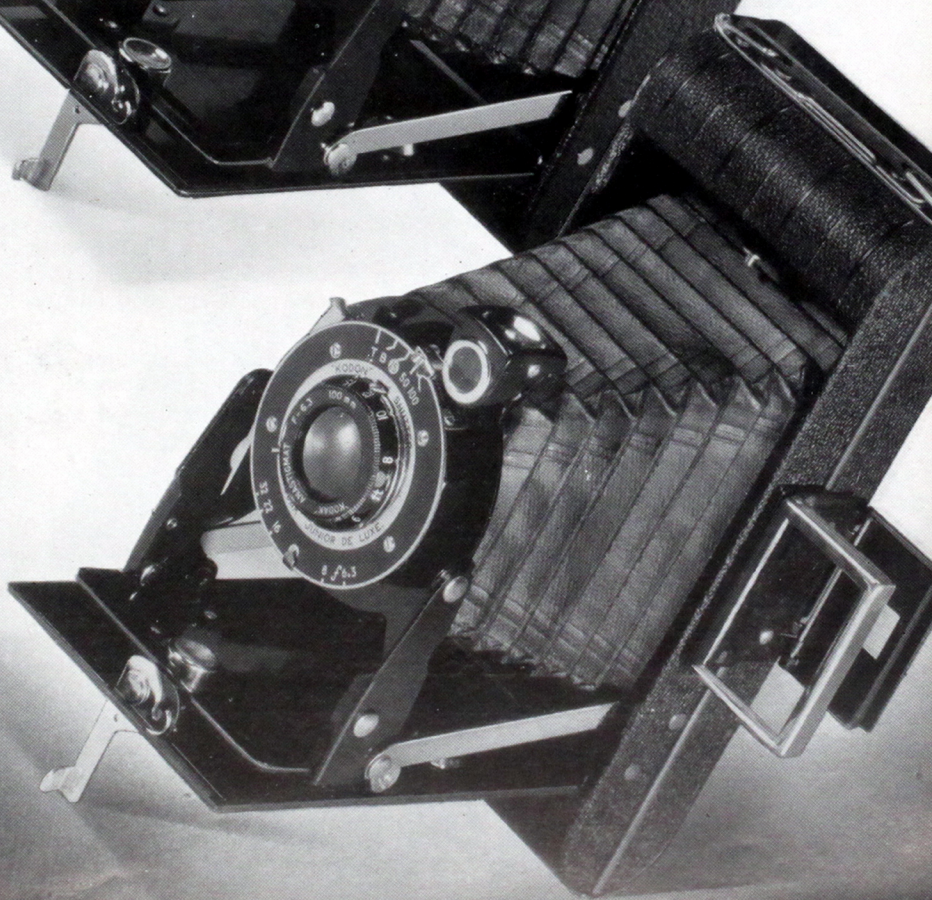
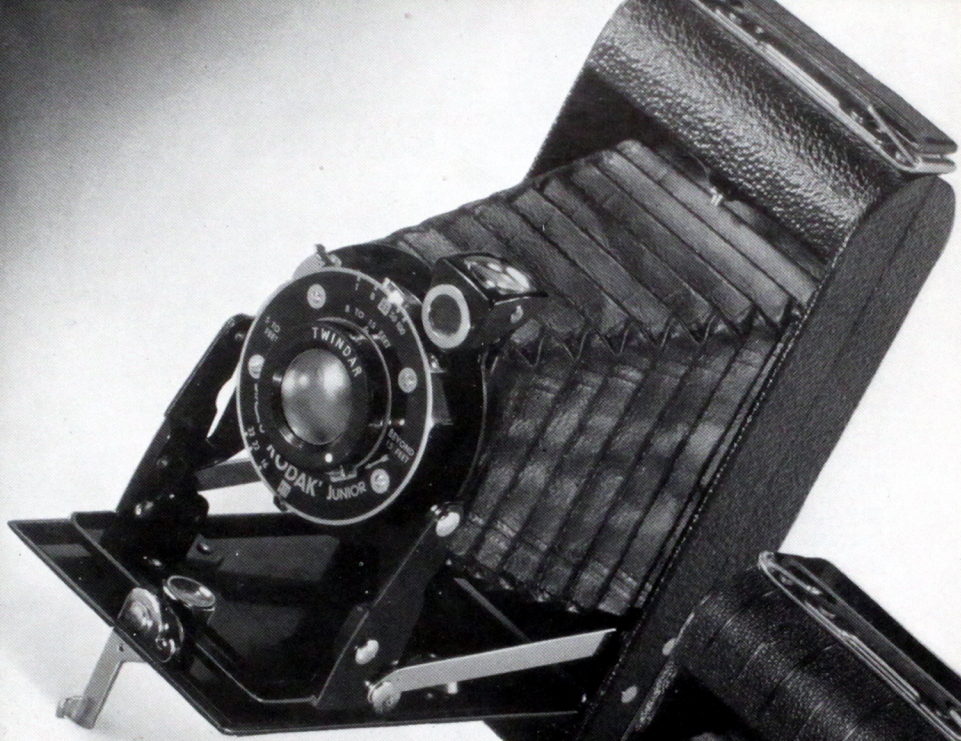
SIX-20 "KODAK" JUNIOR

With "Kodon" Shutter and "Twindar" Lens	£1 19 6
Kodak Anastigmat $f7.7$ Lens	2 5 0
Kodak Anastigmat $f6.3$ Lens	2 15 0

SIX-20 "KODAK" JUNIOR, DE LUXE

With "Kodon" Shutter and Kodak Anastigmat $f6.3$ Lens	£3 5 0
---	--------

FOR KODAK FILM SEE PAGES 36-38 FOR CARRYING CASES SEE PAGE 45



SIX-20 "KODAKS"

PICTURE SIZE— $3\frac{1}{4} \times 2\frac{1}{4}$ INCHES. KODAK FILM NO. 620

If you want a modern folding camera, larger than a "miniature" but still pocket-size, with the latest in equipment (fast lens, speeded self-timing shutter, eye-level viewfinder, etc.) at a most reasonable price, let us show you our Six-20 "Kodaks"; they answer the description exactly.

Speedy *f*6.3 or twice as speedy *f*4.5 anastigmat lenses are fitted, and shutters which have an ingenious device enabling you to take a picture and be in it yourself. The shutter speeds are—O.V. and O.P.S. shutters— $1/25$ th, $1/50$ th, $1/100$ th second, "Time" and "Brief Time"; "Compur-S" shutter—1, $1/2$, $1/5$, $1/10$, $1/20$, $1/50$, $1/100$, $1/250$ th second, "Time" and "Brief Time". A turn of the lens mount with the finger tips sets the focus for any distance from "infinity" down to $3\frac{1}{2}$ feet (except Cooke *f*4.5 lens, which focusses down to 5 feet). No separate portrait attachment is required to make "close-ups".

Lens and shutter are instantly brought into play, the camera opening right out at a touch, ready immediately for the sudden picture. It closes in one quick, easy movement too.

There are two viewfinders, one reflecting (waist-level), the other direct (eye-level), so that you can aim the camera in whichever way is most convenient. The direct-vision finder folds flat against the side of the camera, and "flicks" open in a fraction of a second.

You can use red-sensitive films—Kodak Super Sensitive Panchromatic and "Panatomic"—in these cameras with perfect safety; a sliding cover over the red window through which the film numbers are read ensures freedom from fogging.

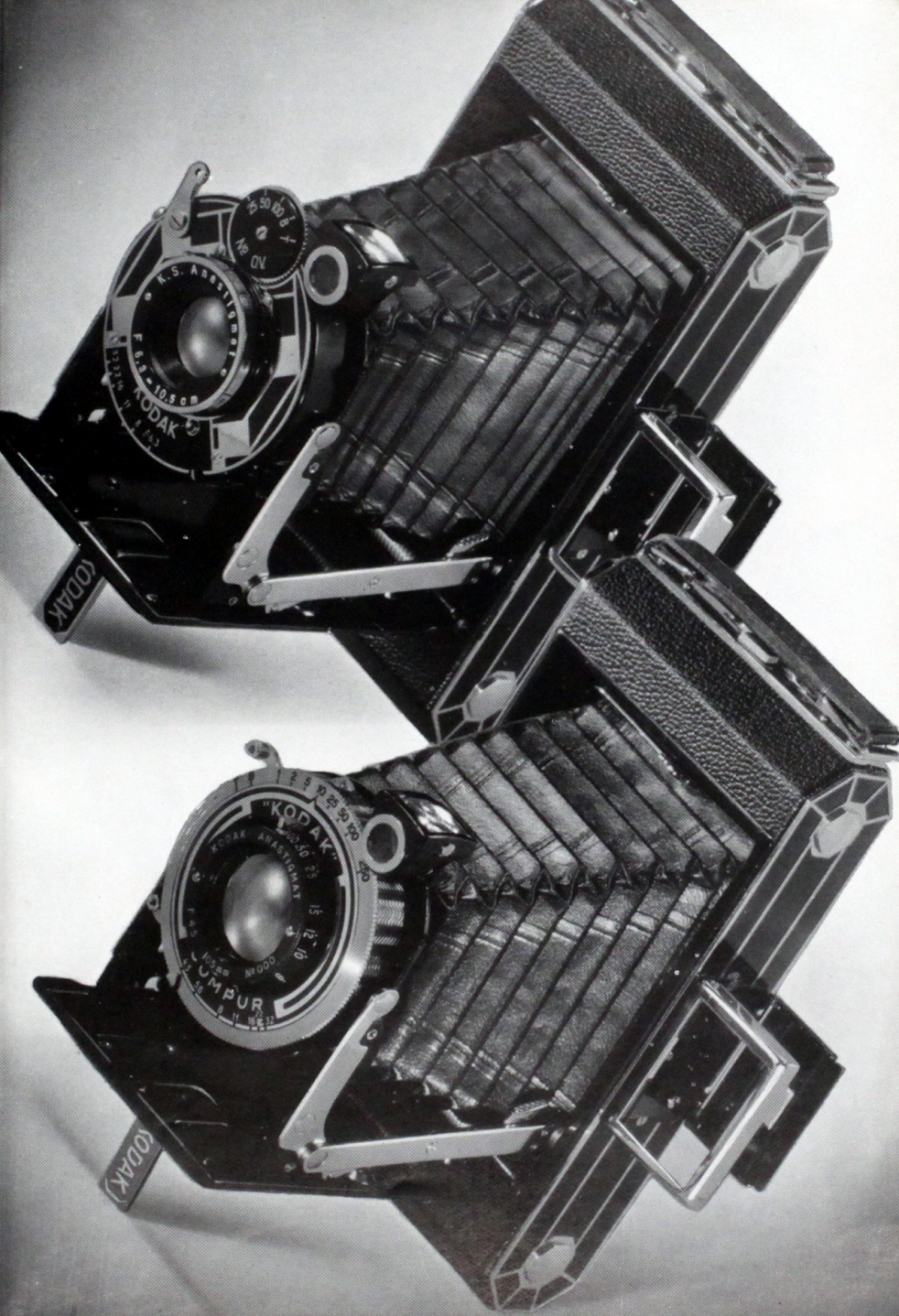
A hinged back and swing-up spoolholders mean quick, easy loading, and two tripod sockets round off this unusually complete list of equipment.

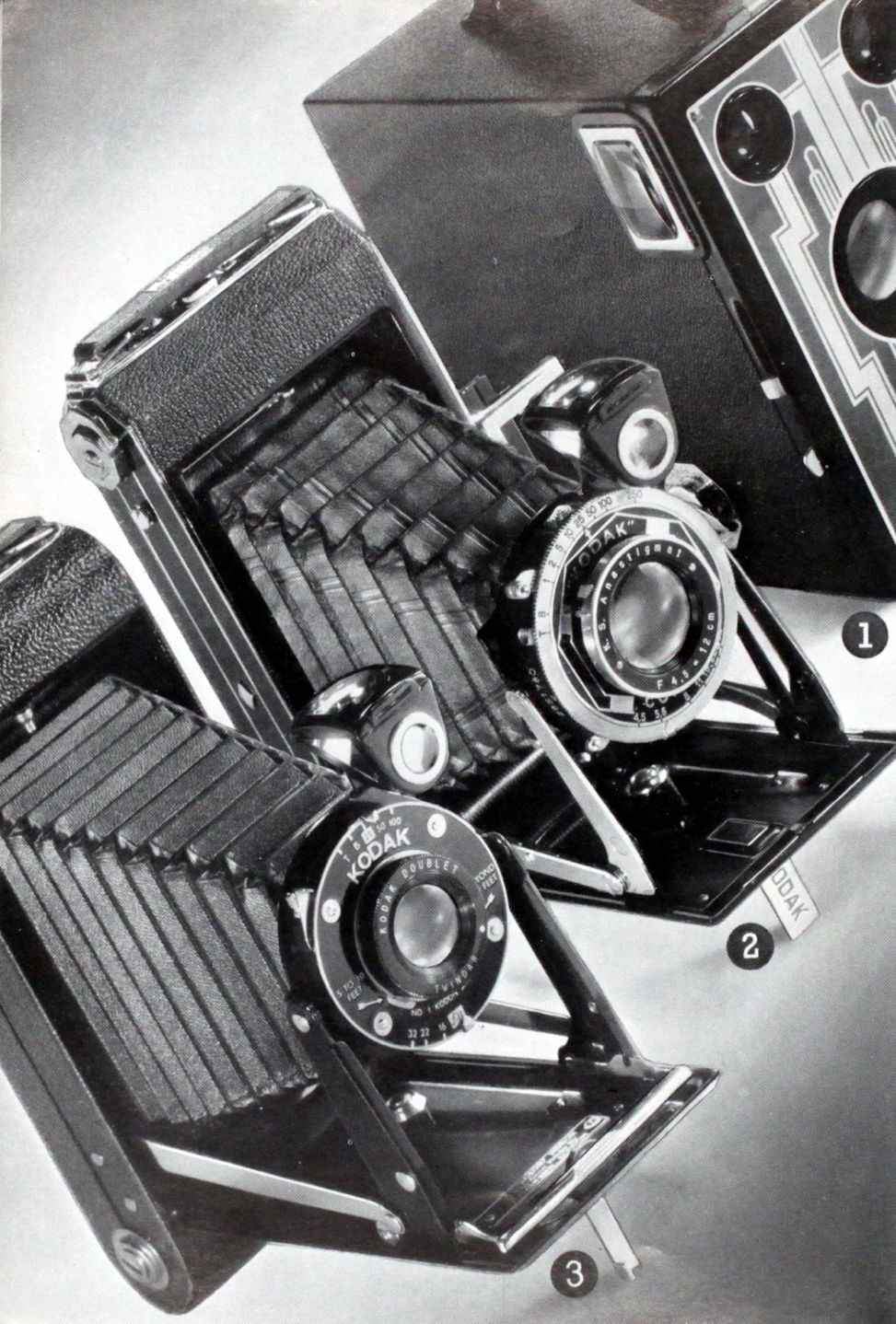
Pigskin-grained black leather, black enamel and chromium-plated metal parts finish off the Six-20 "Kodaks" in exceedingly handsome style.

SIX-20 "KODAK"

<i>With K.S. Anastigmat f6.3 Lens and O.V. Shutter</i>	£3 12 6
<i>With K.S. Anastigmat f6.3 Lens and O.P.S. Shutter</i>	4 2 6
<i>With K.S. Anastigmat f4.5 Lens and O.P.S. Shutter</i>	5 5 0
<i>With K.S. Anastigmat f4.5 Lens and "Compur-S" Shutter</i>	7 7 0
<i>With Cooke Anastigmat f4.5 Lens and "Compur-S" Shutter</i>	10 10 0

FOR KODAK FILM SEE PAGES 36-38 FOR CARRYING CASES SEE PAGE 45





1

2

3



THE BIGGER PICTURE
*The size of picture taken by
 Six-16 "Brownie" and
 Six-16 "Kodaks".*

SIX-16 "BROWNIES" AND "KODAKS"

PICTURE SIZE— $4\frac{1}{4} \times 2\frac{1}{2}$ INCHES. KODAK FILM NO. 616

MOST of the cameras described on the previous pages are made in the BIGGER-picture size (Six-16) as well. You can see from the picture above what fine sizable prints these $4\frac{1}{4} \times 2\frac{1}{2}$ -inch negatives give, even without enlarging.

SIX-16 "BROWNIE" Fitted with "Diway" Lens that enables you to take clear, sharp pictures of subjects near or far. "Time" as well as snapshot exposures. Two lens stops. Two brilliant "Magna" Viewfinders. Smart finish; black morocco grain covering; two-tone metal front; nickelled fittings. (*Illustration No. 1.*)

SIX-16 "BROWNIE" 21/.

SIX-16 "KODAKS" JUNIOR Similar in nearly all respects but size to the Six-20 "Kodak" Junior described on page 14. The "Diodak" Shutter fitted to the f6.3 lens has four speeds— $1/10$ th, $1/25$ th, $1/50$ th, and $1/100$ th second as well as "Time" and "Brief Time" actions, and it incorporates a built-in exposure guide. (*Illustration No. 3.*)

With "Twindar" Lens and "Kodon" Shutter £2 7 6

With Kodak Anastigmat f6.3 Lens and "Diodak" Shutter 3 3 0

SIX-16 "KODAKS" Similar in all respects but size to the Six-20 "Kodaks" described on page 16. (*Illustration No. 2.*)

With K.S. Anastigmat f6.3 Lens and O.V.* Shutter £3 17 6

With K.S. Anastigmat f6.3 Lens and O.P.S.* Shutter 4 7 6

With K.S. Anastigmat f4.5 Lens and O.P.S.* Shutter 5 15 0

With K.S. Anastigmat f4.5 Lens and "Compur-S" (8-speed) Shutter 8 0 0

* 3-Speed shutters with device for self-photography.

FOR KODAK FILM SEE PAGES 36-38 FOR CARRYING CASES SEE PAGE 45

MINIATURE "KODAKS" OF PRECISION

HERE are cameras that experts will love to handle, and anyone can learn to use. They are small but beautifully made—*precision* made—and powerfully equipped with fast lenses and multi-speed shutters, so that you can take one anywhere and take practically anything with it. The smallness of the camera does not limit the size of picture. Thanks to the extremely sharp definition given by the high-grade anastigmat lenses fitted exclusively to these models, the negatives will enlarge up to any size you like.

THE "RETINA"

PICTURE SIZE— $1\frac{1}{2} \times 1$ INCH (APPROX.)

KODAK 35 MM. FILM NO. 135

(in Daylight Loading and Unloading Cassette)
(Panatomic or Super-Sensitive Panchromatic)

MARVELLOUSLY compact, high-powered little instrument, holds film for no less than 36 exposures at a single loading, ideal for holiday-makers and travellers. Fast Schneider or Zeiss $f3.5$ lens in Compur Shutter, with eight speeds up to $1/3000$ th sec., or the Compur-Rapid, nine speeds up to $1/5000$ th sec. Exposure counter "numbers off" pictures as they are made. No overwinding—film advanced exactly the right distance between exposures by simple movement of lever. Depth of focus scale. Optical direct vision viewfinder. (Illustration No. 2.)

The "Retina" with Schneider Xenar $f3.5$ Lens and—

"Compur" Shutter . . . £10 10 0

"Compur-Rapid" Shutter . . . 12 0 0

With Zeiss "Tessar" $f3.5$ Lens and—

"Compur" Shutter . . . £12 10 0

"Compur-Rapid" Shutter . . . 14 0 0

SIX-20 DUO "KODAK"

PICTURE SIZE— $2\frac{1}{4} \times 1\frac{1}{8}$ INCHES

KODAK FILM NO. 620

(16 "shots" on each spool)

This little model saves film—and space—by taking 16 pictures on the usual eight-exposure Kodak 620 spool. Fast high-grade $f4.5$ and $f3.5$ lenses in multi-speed shutters—Pronto-S (delayed action), $1/25$, $1/50$, $1/100$, $1/125$;

"Compur", 1 , $\frac{1}{2}$, $1/5$, $1/10$, $1/25$, $1/50$, $1/100$, $1/3000$ th second. Lens-mount focussing $3\frac{1}{2}$ feet to "infinity". Optical direct vision viewfinder. Depth of focus scale tells you exactly what is in focus at each lens stop. (Illustration No. 1.)

Six-20 Duo "Kodak" with
Pronto-S Shutter and
Kodak Anastigmat $f4.5$. . . £6 0 0

With "Compur" Shutter and
Kodak Anastigmat Lens
 $f4.5$ 8 2 6

Kodak Anastigmat Lens
 $f3.5$ 9 15 0

Zeiss Tessar Lens $f3.5$. . . 12 5 0

THE "PUPILLE"

PICTURE SIZE— $1\frac{5}{8} \times 1\frac{1}{4}$ INCHES

KODAK FILM NO. 127

(16 "shots" on each spool)

ANOTHER popular model that uses a standard-size film (this time vest pocket, Kodak No. 127) but takes twice as many pictures on it as usual—16 instead of 8. Range of really speedy lenses— $f3.5$, $f2.8$, $f2$, in eight-speed "Compur" Shutter. No bellows; the rigid front is mounted on lever-operated spiral thread. Revolving collar focussing—"infinity" down to extra-near "close-ups" as close as $2\frac{1}{2}$ feet. Optical eye-level viewfinder. Depth of focus scale. (Illustration No. 3.)

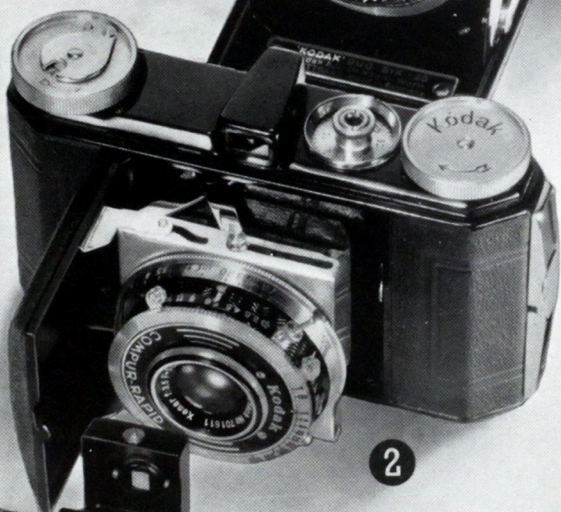
The "Pupille" with Leitz
Elmar $f3.5$ Lens and
"Compur" Shutter . . . £15 15 0

Other models up to £21 10 0 according to lens.

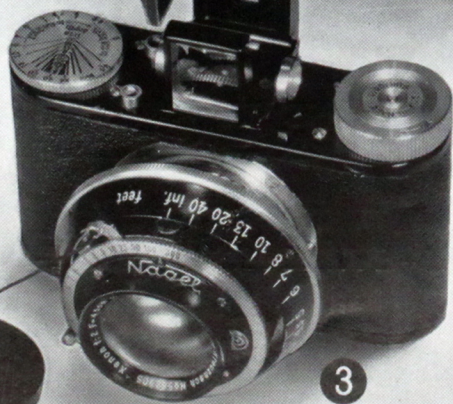
FOR KODAK FILM SEE PAGES 36-38 FOR CARRYING CASES SEE PAGE 45



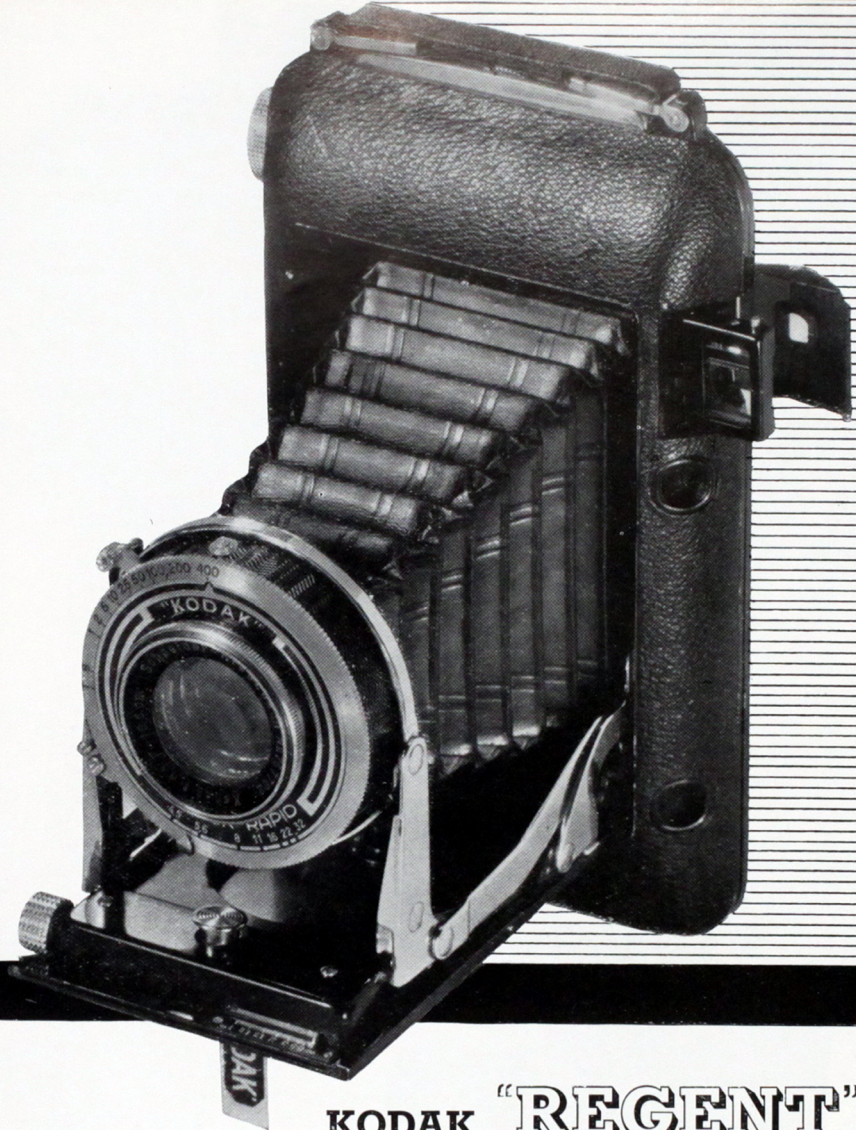
1



2



3



KODAK "REGENT"

PICTURE SIZE— $3\frac{1}{4} \times 2\frac{1}{4}$ INCHES or $2\frac{1}{4} \times 1\frac{1}{8}$ INCHES. KODAK FILM NO. 620

"NOTHING BUILT-ON—EVERYTHING BUILT-IN"

THE "REGENT"—PRINCE OF "KODAKS"

The "Regent" does everything! Every device that experience could suggest to make perfect pictures surer, quicker and simpler to get has been—not added to, but *incorporated in*—this wonderful "streamline" camera.

For example, the "Regent" itself solves all focussing problems for you. A range-finder, which is ready for use without further adjustment immediately the camera is opened, is coupled direct to the focussing movement, both being controlled by a single knob. Twist this knob as you aim, see your subject—whatever the distance—sharp in your viewfinder, and you *have focussed*; you have automatically set the camera correctly to get the subject sharp in the picture.

(Note—Experts will appreciate this point—the whole compound lens moves forward for focussing, not just one of the component lens glasses; this is acknowledged to be the best method of focussing for the highest-grade cameras.)

What size of picture do you prefer? The "Regent" does not restrict you to a single size. It takes either eight $3\frac{1}{4} \times 2\frac{1}{4}$ inch pictures or sixteen pictures half that size— $2\frac{1}{4} \times 1\frac{3}{8}$ inches—on a spool of Kodak Film No. 620. The change over from one picture size to the other is simply a matter of inserting or removing a couple of masks at the back of the camera before putting in a new spool. Two little sliding masks built into the direct-vision viewfinder ensure that you "frame" your subject correctly whichever size picture you are taking.

FINEST OPTICAL EQUIPMENT

The lens is the world-famous Zeiss Tessar $f4.5$; the shutter is the "Compur-Rapid" with nine speeds—1, $\frac{1}{2}$, 1/5, 1/10, 1/25, 1/50, 1/100, 1/200, and 1/400th second. This speedy combination puts you in complete command of the widest range of subjects. The shutter has a delayed action device—you can take a picture and be in it yourself. The camera opens smartly in a single movement, and a single movement closes it. The back is hinged for easy loading, and swivelling spool-holders make it particularly easy to insert and remove spools. The red windows are efficiently light-trapped by a sliding metal safety cover, because you will, naturally, want to use Panchromatic Film in a camera like this. Finest black-grained leather covers the camera, except for the parts which are chromium-plated. The "Regent" can be used in all climates. There is a dustproof tripod socket.

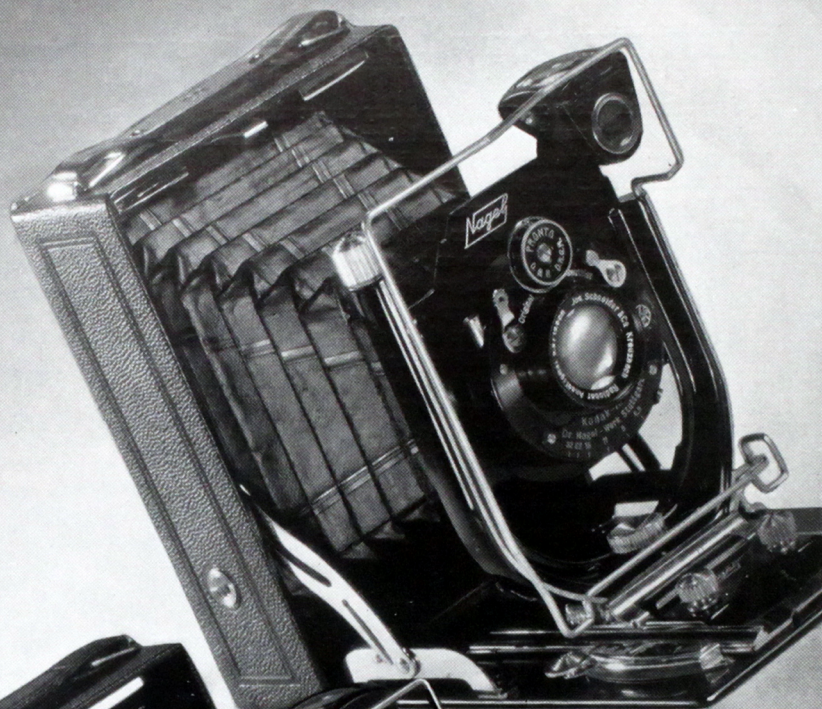
Closed, the camera is beautifully free of projecting parts. The range-finder has no external parts to get damaged; it is completely built-in; the viewfinder and winding key lie flush with the edges; the edges are rounded smoothly off. In its shapely "streamline" finish the "Regent" presents the highest achievement of modern camera design. It would be treason to expose so princely a possession to unwarrantable "scraping and bumpage" so we never sell the "Regent" without its special real-leather carrying case which is included in the price.

THE KODAK "REGENT"

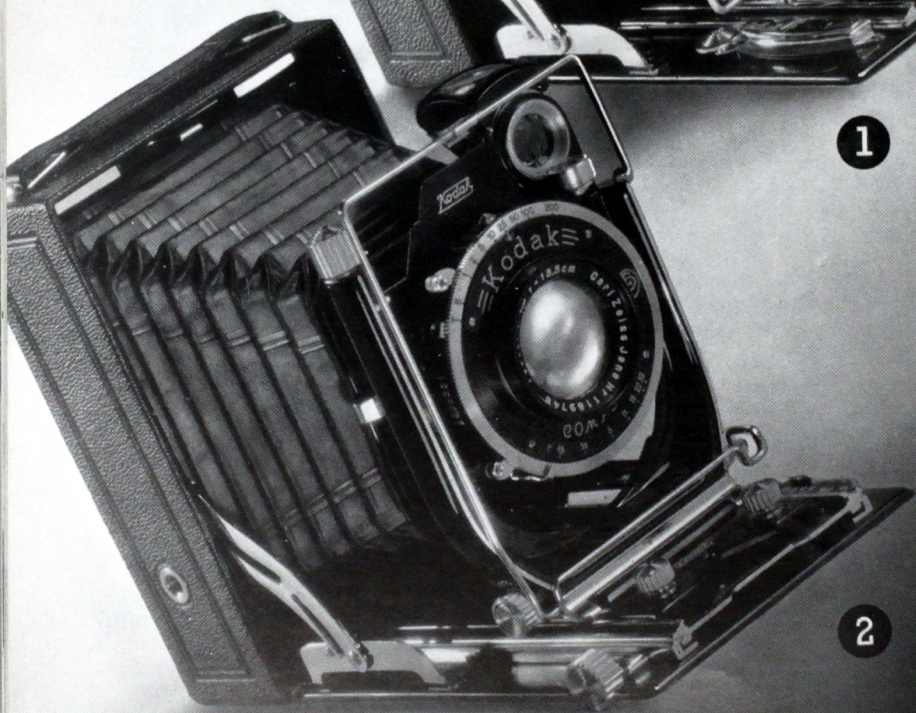
With Zeiss "Tessar" $f4.5$ Lens and "Compur-Rapid" Shutter, including
Leather Carrying Case

£20 0 0

23



1



2

KODAK CAMERAS FOR FILM PACKS AND CUT FILMS

FOR specialists who prefer to use Kodak Film Packs or Cut Films, and who like to have certain advanced refinements—rising and falling fronts, etc.—on their cameras.

THE "ANCA"

PICTURE SIZE—NO. 14, $3\frac{1}{2} \times 2\frac{1}{2}$ INCHES. KODAK FILM PACK NO. 520

NO. 28, 9×12 CM. or $4\frac{1}{4} \times 3\frac{1}{4}$ INCHES. KODAK FILM PACK NO. 541 or 518

STRONGLY built and versatile. Rising and falling front, direct vision and reflecting viewfinders, spirit level, ground glass focussing screen. Focussing from 4 feet to "infinity" (No. 28 "Anca" 6 feet to "infinity") by thumb-operated radial lever. Fast anastigmat lenses $f6.3$ and $f4.5$ in multi-speed shutters fitted with delayed-action device for self-photography. (Illustration No. 1.)

	"ANCA" No. 14	"ANCA" No. 28
With Schneider Radionar $f6.3$ Lens in "Pronto-S" Shutter	£5 5 0	£6 0 0
With Schneider Xenar $f4.5$ Lens in "Compur-S" Shutter	8 12 6	10 10 0

THE "RECOMAR"

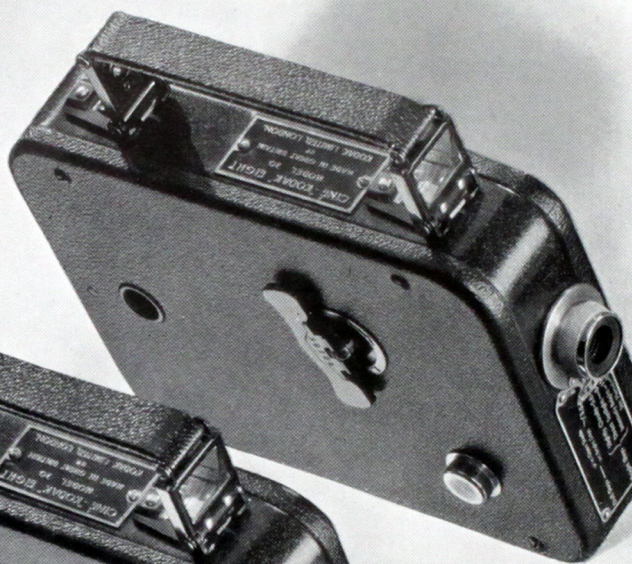
PICTURE SIZE—NO. 18, $3\frac{1}{2} \times 2\frac{1}{2}$ INCHES. KODAK FILM NO. 520

NO. 33, 9×12 CM. or $4\frac{1}{4} \times 3\frac{1}{4}$ INCHES. KODAK FILM PACK NO. 541 or 518

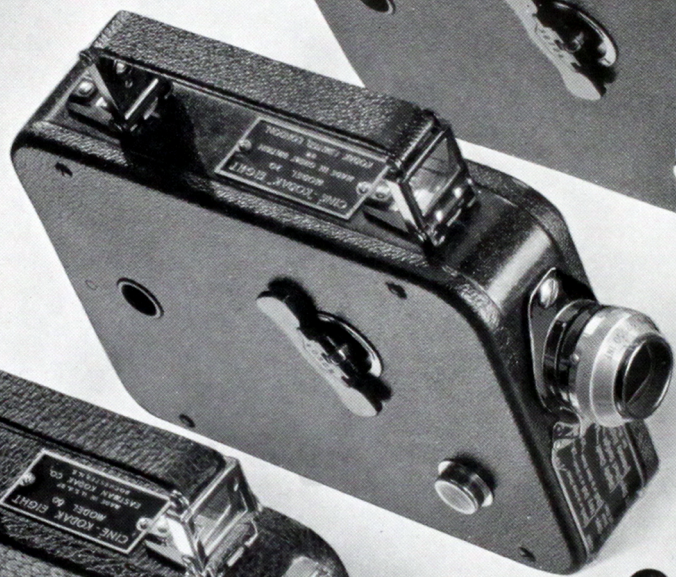
THE "Recomar" has an unusually complete range of advanced features. Front has good rise and fall as well as cross movements to left and right. Frame viewfinder for eye-level use, and brilliant reversible reflecting viewfinder for use at waist-level. Spirit level attached to reflecting finder. Back and pinion focussing with locking action; double extension allows use of long-focus lenses, or copying actual size. Ground glass focussing screen, protected by spring-out hood—glass easily removable for cleaning. Two tripod sockets. Fast high-grade lenses in delayed-action "Compur" shutter. (Illustration No. 2.)

	"RECOMAR" No. 18	"RECOMAR" No. 33
With "Compur-S" Shutter and Schneider "Xenar" $f3.8$ Lens	£11 17 6	£14 15 0
With "Compur-S" Shutter and Zeiss "Tessar" $f4.5$ Lens	12 2 6	14 7 6

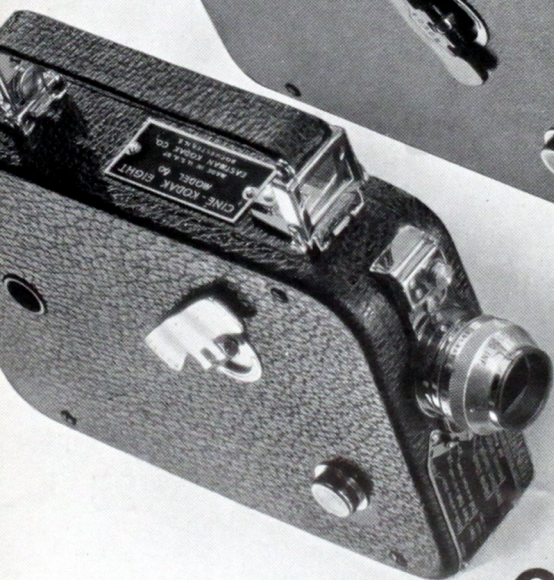
FOR KODAK FILM PACKS SEE PAGE 38 FOR CARRYING CASES SEE PAGE 45



1



2



3

HOME MOVIE-MAKING

To capture action, which is life, at the touch of a button; to release and re-live it whenever you wish on your own home screen; that is to add a great deal to your enjoyment of the world.

For fun and thrills and lasting pleasure there is nothing quite equal to home movies—the movies *you* make of the people *you* know. Making movies is every bit as easy as taking snaps. And you can film with equal ease in either black-and-white or (with 16-mm. Ciné-“Kodaks”) *in full colour*. See page 34 for details of this wonderful new Kodak invention—“Kodachrome”. Movies cost less than many people imagine. With the Ciné-“Kodak” Eight, the cheapest movie camera to run, filming costs work out at the rate of about 6d. a scene. (A scene averages 8–12 seconds—as long as the news-reel “shots” you see at the cinema.)

If you'd like to know more about home movies, please ask us for a fully descriptive booklet. Here we can only give brief accounts of the chief 8 and 16-mm. Ciné-“Kodak” cameras and “Kodascope” projectors.

CINÉ-“KODAK” EIGHT-20

LIGHT, compact, yet taker of splendid movies. Wind it up and press a button; the quiet purring of a spring motor tells you that filming has begun. Eye-level viewfinder makes sighting the subject easy; built-in exposure guide tells you about lens stop to use in any kind of light. Two lenses, fast $f3.5$ or ultra-fast $f1.9$. With the latter you can take movies indoors at night as well, with the aid of “Photoflood” lamps (see page 56). ($f3.5$ Model—*Illustration No. 1*; $f1.9$ Model—*Illustration No. 2*.)

CINÉ-“KODAK” EIGHT-60

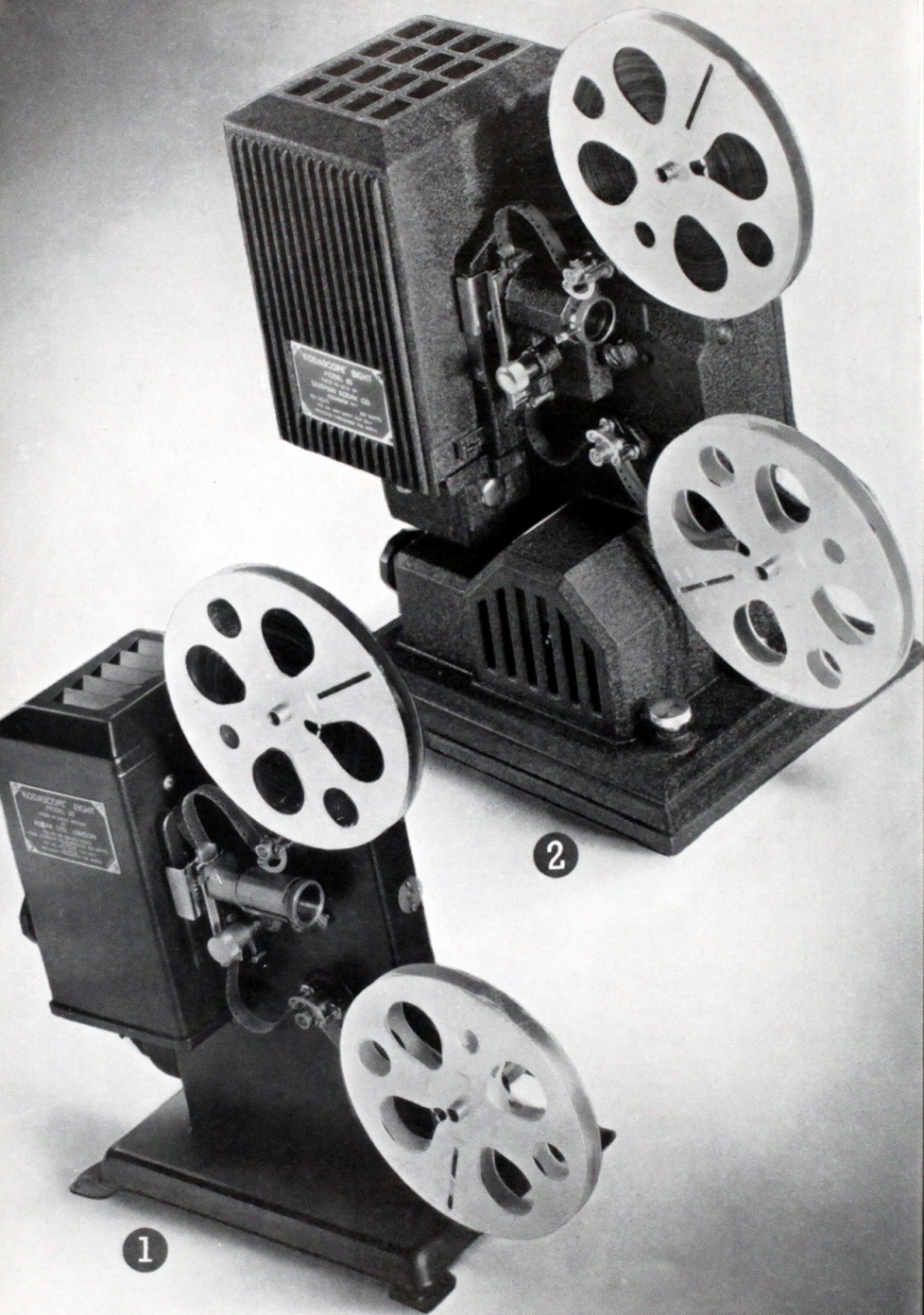
A DE LUXE MODEL fitted with $f1.9$ lens which is instantly interchangeable with a $1\frac{1}{2}$ -inch $f4.5$ Telephoto lens (extra). The latter has the effect of enabling you to take “close-ups” at a distance, and is excellent for filming all kinds of sport. The Eight-60 is leather-covered, with chromium-plated metal parts. (*Illustration No. 3*.)

CINÉ-“KODAK” EIGHT-20

With Kodak Anastigmat $f3.5$ Lens	£9 17 6
With Kodak Anastigmat $f1.9$ Lens	15 0 0

CINÉ-“KODAK” EIGHT-60 (in carrying case)

With Interchangeable Kodak Anastigmat $f1.9$ Lens	£25 0 0
Telephoto $f4.5$ Lens.	8 8 0



1

2

"KODASCOPE" EIGHT

THE Ciné-"Kodak" shoots the film; the "Kodascope" shows it with the same smooth-running simplicity. For Ciné-"Kodak" Eight movies there are two "Kodascopes"—Eight-30 and Eight-80.

"KODASCOPE" EIGHT-30

At low cost this model satisfies all ordinary home projection needs. It is motor-driven and only needs plugging into the household electric circuit; a resistance for 100-250 volts forms part of the machine.

It throws a 30×22 inch picture at 14 feet—comfortably large for the average room. You can "still" the picture at any point, a safety screen coming automatically between the special 100-watt lamp and film when you do so, to prevent the film getting hot.

The "Kodascope" holds 200 feet of 8-mm. film, enough for over a quarter of an hour's continuous projection. After projection the film is quickly rewound by electric motor ready for the next show. (*Illustration No. 1.*)

"KODASCOPE" EIGHT-80

EIGHT-80 stands for super projection in the 8-mm. field. A specially powerful 300-watt lamp provides the illumination, and brilliant pictures 40×30 inches, larger where space permits, are easily obtained. Other features are—picture focussed by touch of lever on lens; rapid motor rewind (no change of reels necessary); fan-cooled lamp-house; still-picture device; motor speed control.

The finish is of crystalline bronze, pebble grained; exposed metal parts are chromium-plated. Capacity—200 feet of film, lasting over a quarter of an hour. (*Illustration No. 2.*)

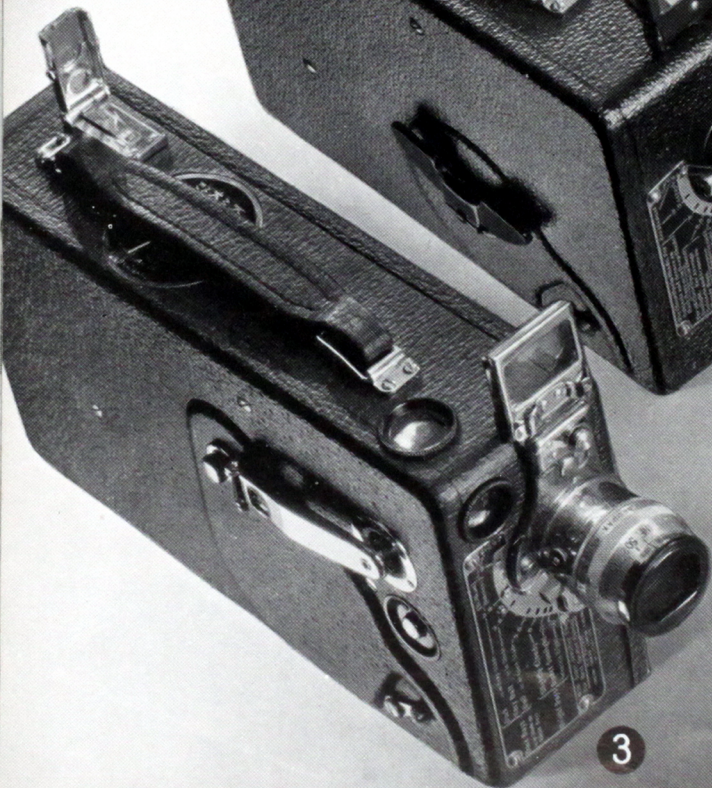
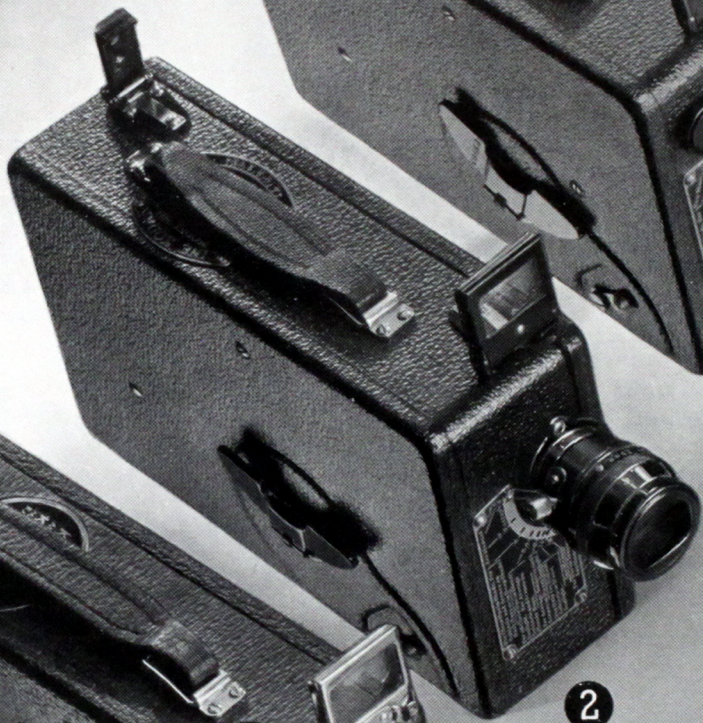
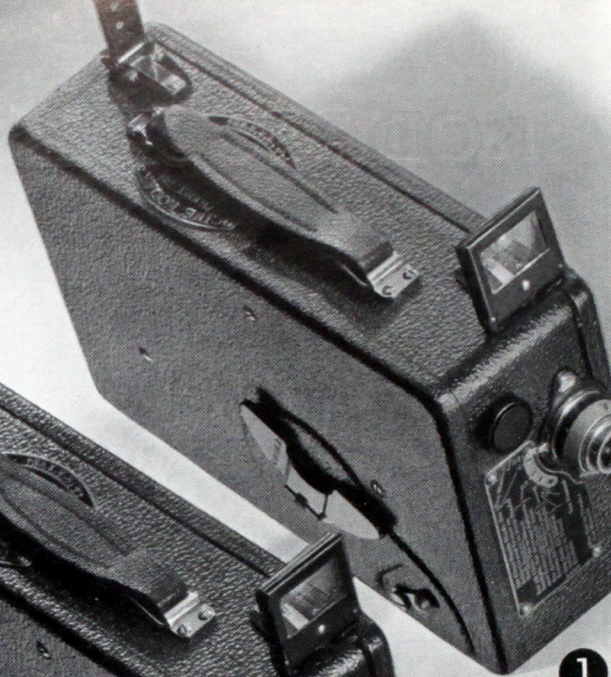
"KODASCOPE" EIGHT-30

Incorporating resistance for 100-250 volts, and including splicing outfit . . . £9 9 0

"KODASCOPE" EIGHT-80

100-250 volts, including Carrying Case, two 300-watt Lamps, Oiling Outfit, Splicing Outfit, two 200-ft. Reels, one Humidor Can, and variable resistance 33 0 0

Dallmeyer Projection Lenses of various foci are also available for the "Kodascope" Eight-30. Ask for details.



16 MM. CINÉ-"KODAKS"

THE wider range of apparatus, films, and accessories available in the 16-mm. size, offers the keen worker the greatest possible scope for his movie-making. The larger film size makes possible larger pictures and longer "throws", a fact taken advantage of by the high-powered 16-mm. "Kodascope" projectors, so that you can give movie shows in lecture halls and classrooms. In the 16-mm. size, too, you can film in full colour, with any camera, as easily as in black-and-white by the remarkable new "Kodachrome" process (see page 34).



The essential simplicity of Ciné-"Kodak" filming is as much a feature of 16-mm. apparatus as of the "Eight", described on the previous pages. Aim, press a button, and you're filming—it's still as easy as that.

CINÉ-"KODAK" MODEL BB JUNIOR

THIS handy, capable model is the smallest, simplest and lowest priced of the 16-mm. Ciné-"Kodaks", but is fully equipped with $f3.5$ or ultra-fast $f1.9$ lens, built-in exposure guide, footage indicator, eye-level viewfinder, and, of course, spring motor. It holds 50 feet of 16-mm. Ciné-Kodak Film. ($f3.5$ Model—*Illustration No. 1*; $f1.9$ Model—*Illustration No. 2*.)

CINÉ-"KODAK" MODEL K

A DE LUXE MODEL, with more advanced features, such as instant interchangeability of standard $f1.9$ lens with $f2.7$ wide angle lens and also with series of four long-focus lenses (extra) ranging from a 2-inch $f3.5$ to a 6-inch $f4.5$. Two speeds—normal, 16 frames per second, half, 8 frames per second, under press-button control. Direct (eye-level) and reflecting (waist-level) viewfinders. Capacity—50 or 100 feet of 16-mm. Ciné-Kodak Film. (*Illustration No. 3*.)

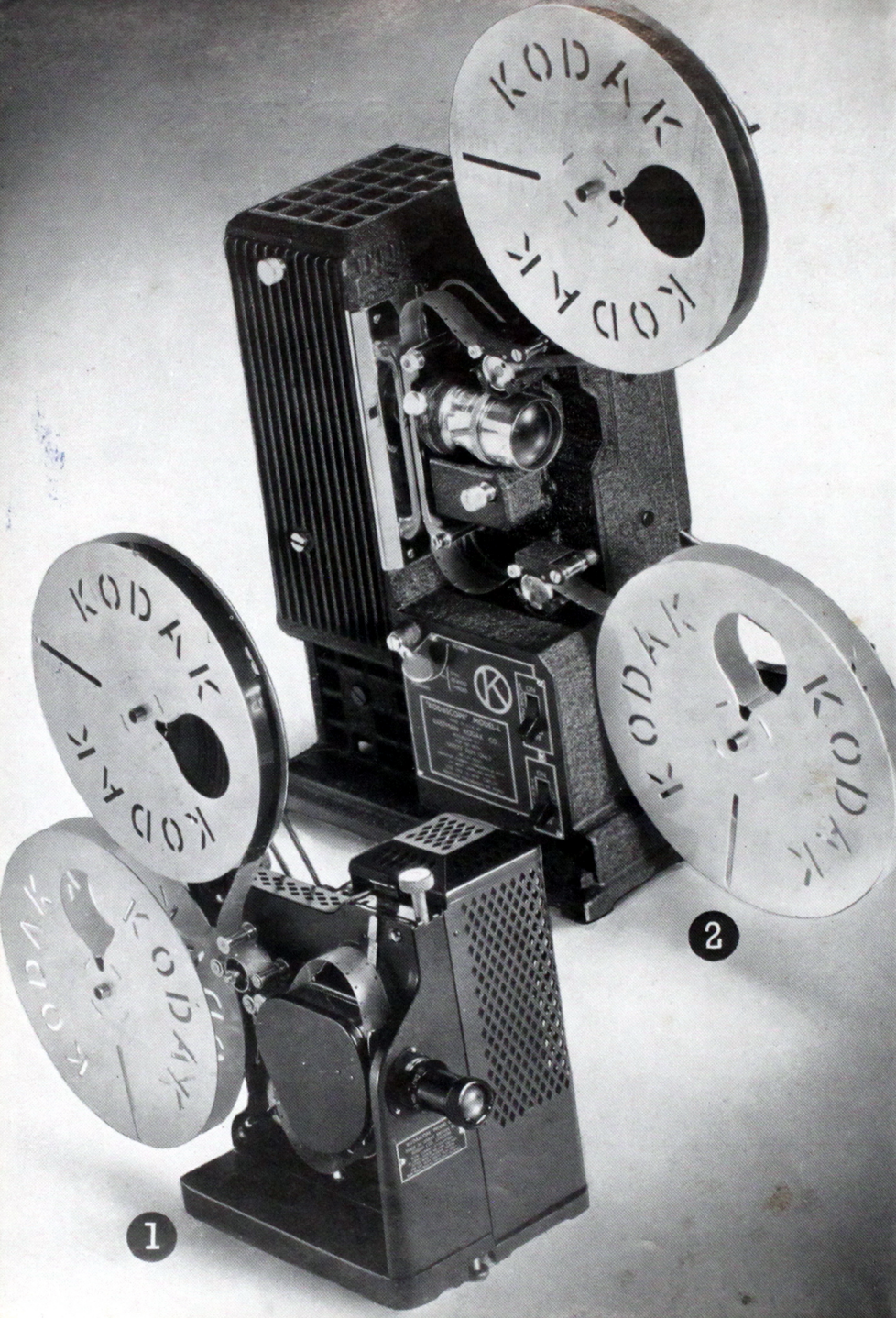
CINÉ-"KODAK" MODEL BB JUNIOR

$f3.5$ Lens	£13 13 0
$f1.9$ Lens	18 18 0

CINÉ-"KODAK" MODEL K

$f1.9$ Lens	35 0 0
-----------------------	--------

For Ciné-"Kodak" Film see page 34.



1

2

16 MM. "KODASCOPIES"

MOVIES made by the Ciné-"Kodaks" described on the previous page can be shown with either of the following "Kodascope" projectors.

"KODASCOPE" MODEL D

THE model for "family" movie shows. It projects a brilliant steady picture 40 x 30 inches at 14 feet—ample for most home ciné performances. You have only to plug it in to a wall switch to light the brilliant 300-watt lamp, start the smooth-running electric motor, and also a fan which circulates air through the lamp-house. The capacity of the "Kodascope" is 400 feet of 16-mm. film, enough for over a quarter of an hour's entertainment. At any point during projection you can "still" the picture by the simple movement of a lever.

When the film has been shown, a fast-working motor rewind runs it quickly back on to its original reel ready for projection again. (*Illustration No. 1.*)

"KODASCOPE" MODEL L

HOWEVER large or small the picture you want, whatever its brilliance and distance, the "Kodascope" Model L gives it to you—exactly. The secret of this all-purpose versatility lies in a series of four interchangeable lenses and three interchangeable lamps that can be fitted to the machine. The lenses are of 1 in., 2 in., 3 in., and 4 in. focal length; the lamps are 300 watt, 500 watt, and 750 watt. You select the combination that suits your projection conditions best, for a family show at home or a public lecture in a hall. So far as its most important features go, in fact, this "Kodascope" is built to your personal requirements.

Motor-driven cooling fan; lever focussing movement; easily removable film gate; centralised controls, including "still" picture device, forward and immediate reverse action; high-speed motor-driven rewind, and central oiling to all main bearings are among the other leading features.

A table lamp can be plugged in, and as soon as the "Kodascope" is switched off the table lamp is automatically switched on, and vice versa.

The finish is of crystalline bronze with exposed parts chromium-plated. (*Illustration No. 2.*)

"KODASCOPE" MODEL D

Including Supplementary Resistance, Splicing and Oiling Outfits . . . £25 0 0

"KODASCOPE" MODEL L

100-Volt Model (without lamp), but including 1-inch or 2-inch Lens, Splicing and Oiling Outfits, two 400-ft. Reels, one Humidor Can, Table Lamp (without bulb), and Carrying Case	67 10 0
Resistance for 200-250 volts, 300-watt Lamp	3 17 6
Resistance for 200-250 volts, 300-500-750-watt Lamps	7 10 0
Lamps from	1 6 0

CINÉ-KODAK SAFETY FILM

16 MM. CINÉ-KODAK PANCHROMATIC FILM

For all ordinary outdoor filming.

CINÉ-KODAK SUPER SENSITIVE PANCHROMATIC FILM. Tremendously fast; especially sensitive to artificial light. Makes indoor shooting at night possible.

*For all 16-mm. Ciné Cameras taking
50 ft. and 100 ft. Rolls*

	Panchromatic		Super-Sensitive Panchromatic	
	S	D	S	D
50 ft. Rolls (Daylight loading)	14	0	17	6
100 ft. Rolls (Daylight loading)	26	0	32	6

In Cassettes

For Siemens-Halske 50 ft.	14	0	17	6
„ Simplex-Pockette and 121 Filmo 50 ft.	16	0	19	6
„ Kinamo S10 (10 metres)	10	6	12	6

8 MM. CINÉ-KODAK EIGHT SAFETY FILM

Fully panchromatic (sensitive to all colours including red).

25 ft. Roll (equal in projection time to 100 ft. 16-mm. film) 10 0

“KODACHROME”

Home Movies in FULL COLOUR with any 16 mm. Camera taking 50 ft. or 100 ft. rolls! No special equipment needed for taking or projecting.

Skies that are blue, grass that is green, frocks and cheeks and hair in their living colours—colours without grain, without lines, without fringing—that is what “Kodachrome” gives you on your movie screen. It is marvellous enough. But it’s only half the story. The astonishing ease with which you can bring this miracle of living colour to your fire-side is the other and equally wonderful thing about “Kodachrome”. All you have to do is to load your 16-mm. ciné camera with a roll of “Kodachrome” Film and—shoot! Any lens can be used—no need for a specially fast one—

and you can use telephoto and wide-angle lenses as well. For all average shots no filter is necessary.

Projection is as easy. Any 16-mm. projector, regardless of lens or lamp equipment, will show “Kodachrome” movies with the full brilliance and full size of black-and-white. No filter is necessary. The colour is in the film.

It would take too long to describe here how “Kodachrome” works. The explanation is complex; the operation, for you, is wonderfully simple—and simply wonderful.

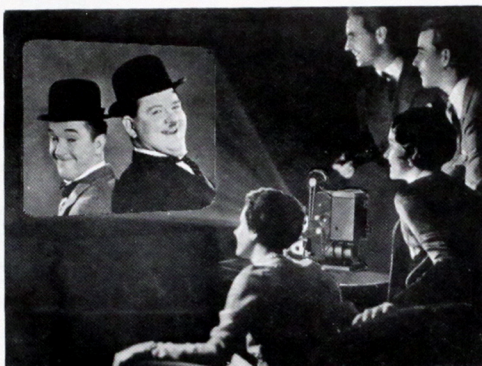
“KODACHROME” FILM, 50 ft. Roll . . . 22/6 . . . 100 ft. Roll . . . 42/-
50 ft. Cassette for Simplex-Pockette or Bell-Howell Filmo 121 . . . 24/6

All prices include processing and return postage.

HOLLYWOOD AND ELSTREE SUCCESSSES FOR YOUR HOME SCREEN

“KODASCOPE” LIBRARY

THINK of being able to invite famous British and American screen stars to your own fireside screen ! That is what the “*Kodascope*” Library enables you to do. Not only comedies and dramas, but professionally-made cartoons and travel, sports, industrial, and scientific films are all available for showing through the “*Kodascope*”, 8-mm. or 16-mm. With some of your own movies and some from the “*Kodascope*” Library you can always make up a well-balanced evening’s entertainment. Descriptive catalogue and list of hire charges on request.



See Laurel and Hardy, the famous M-G-M stars, on your own screen.

CINÉ “KODAGRAPHS”

A number of shorter films in both 8-mm. and 16-mm. sizes are available for purchase outright, so that you can build up a permanent film library of professional productions. These are the *Cine “Kodagraphs”*; they comprise all kinds of subjects ranging from a wonderful film record of last year’s historic Silver Jubilee procession to Charlie Chaplin in some of his hilarious successes. *Please ask for list.*

PRICES 16-mm. 100 ft. lengths	21/- and 27/6
200 ft. lengths	50/-
8-mm. 50 ft. lengths	12/-
100 ft. lengths	24/-

KODAK

MAKE sure of the picture by making sure of the film; Kodak Film is the film you need, *always*. It offers you a choice of four grades—Kodak REGULAR, Kodak “VERICHROME”, Kodak “PANATOMIC”, and Kodak SUPER-SENSITIVE PANCHROMATIC—that is, a grade for every need. Which to use, and when, is described below.

For snapshots in the sunshine or Time Exposures under any conditions

KODAK REGULAR FILM

THIS is the direct “descendant” of the original roll film made by Kodak over 40 years ago. It has been improved and improved again since then and has made a name as the supremely dependable film—the film you can always rely on. It is excellent for all the ordinary kinds of pictures—landscapes, outdoor groups, etc.

For bright snaps on dull days and better pictures in any weather

KODAK “VERICHROME” FILM

“VERICHROME” is superior in several important ways. It is Double Coated—has two coatings of sensitive silver emulsion, one fast, one slow. The fast one is quick to catch detail in the shadow portions of the subject; the slow one “holds on” to detail in the bright portions. Result—you get full detail all over.

“Verichrome” is sensitive to greens and yellows in addition to other colours, so that it is able to give a better, truer black-and-white reproduction of all the subjects in which these colours occur—grass, trees, cornfields, etc. It has a special Anti-halation Backing which prevents the blur of light that often occurs with ordinary films round lights and bright objects in a picture. There is a wonderful crispness about “Verichrome” pictures. Finally, “Verichrome” has enormous latitude. If you happen to give too long an exposure or use too large a lens stop, “Verichrome” “lets you off” your mistake and gets the picture just the same.

FILMS

ALL four grades of Kodak Film are made in Roll Films and Film Packs. Prices of most popular sizes are given on next page; for other sizes please ask us.

The finest all-purpose film for pictures large or small

KODAK "PANATOMIC" FILM

To discover the very best work a camera—any camera—is capable of doing, load it with "Panatomic" Film.

"Panatomic" is panchromatic—sensitive to the whole range of colours, including red—and gives brilliant tone-true renderings in black-and-white of any and every subject. It is Double Coated and Anti-halation Backed (for explanation of these features see opposite page under "Verichrome"). And it has a Superfine Grain—the tiny grains of silver salts that go to make up the sensitive coatings are so microscopically fine that you can make big enlargements from the smallest "Panatomic" negatives and still retain the clear-cut crispness and richness of the original.

When *fine quality* is your first consideration, make "Panatomic" your choice.

The film of lightning speed

KODAK SUPER SENSITIVE PANCHROMATIC FILM

KODAK S.S. Pan. offers you above all, *speed*. It is very fast to daylight; relatively to other films it is especially sensitive to the yellow light of early morning or late evening; but its superiority is most marked by artificial light. To this it is very sensitive indeed, so much so that it enables you to take pictures indoors at night by the aid of one or two "Photoflood" Lamps (see page 56) with very short exposures, even snapshots.

With its extremely high speed, Kodak "S.S. Pan" Film combines full panchromatic sensitivity (registering all colours including red). It is also Double Coated and Anti-halation Backed, so that it gets all possible detail in every picture and records bright lights without "fuzz".

KODAK FILMS—PRICES

KODAK REGULAR AND "VERICHROME" ROLL FILM

<i>For use in—</i>	<i>Picture Size</i>	<i>Exposures</i>	<i>Verichrome</i>		<i>Regular</i>	
			<i>No.</i>	<i>Price</i>	<i>No.</i>	<i>Price</i>
Vest Pocket "Kodaks" and Baby "Brownie"	1 5/8 x 2 1/2 in.	8	V127	1/2	127	1/-
Six-20 "Kodaks"*, Kodak "Regent", and Six-20 "Brownies"	2 1/4 x 3 1/4 in.	8	V620	1/2	620	1/-
No. 1 "Kodaks" and No. 2 "Brownies"	2 1/4 x 3 1/4 in.	8	V120	1/2	120	1/-
Six-16 "Kodaks" and Six-16 "Brownies"	2 1/2 x 4 1/4 in.	8	V616	1/6	616	1/3
No. 1A "Kodaks" and No. 2A "Brownies"	2 1/2 x 4 1/4 in.	8	V116	1/6	116	1/3

KODAK SUPER SENSITIVE PANCHROMATIC AND "PANATOMIC" ROLL FILM

<i>For use in—</i>	<i>Picture Size</i>	<i>Exp.</i>	<i>Super Sensitive Panchromatic</i>		<i>"Panatomic"</i>	
			<i>No.</i>	<i>Price</i>	<i>No.</i>	<i>Price</i>
Vest Pocket "Kodaks" and Baby "Brownie"	1 5/8 x 2 1/2 in.	8	SS127	F127		1/6
Six-20 "Kodaks"*, Kodak "Regent", and Six-20 "Brownies"	2 1/4 x 3 1/4 in.	8	SS620	F620		1/6
No. 1 "Kodaks" and No. 2 "Brownies"	2 1/4 x 3 1/4 in.	8	SS120	F120		1/6
Six-16 "Kodaks" and Six-16 "Brownies"	2 1/2 x 4 1/4 in.	8	SS616	F616		1/9
No. 1A "Kodaks" and No. 2A "Brownies"	2 1/2 x 4 1/4 in.	8	SS116	F116		1/9

KODAK FILM FOR 35 mm. (Miniature) CAMERAS

"Panatomic" and Super Sensitive Panchromatic Grades are available—

Daylight Loading and Unloading Cassette (36 exp.) for "Retina" and "Leica"	3/6
Daylight Loading Spools (36 exp.) for "Contax" Cameras	3/6
Unspooled Length (36 exp.) for loading into "Leica" Film Cartridges	2/-

KODAK FILM PACKS—

Kodak Regular, "Verichrome", Super Sensitive Panchromatic, and "Panatomic"

Each film pack consists of 12 films enclosed in a strong and rigid metal casing. The tabs pull out and tear off easily; each film lies flat in the focal planes. Kodak Film Packs are easy to handle in the camera and in the darkroom.

<i>Size of Picture</i>		<i>"Verichrome"</i>		<i>Super Sensitive Panchromatic</i>		<i>"Panatomic"</i>		<i>Regular</i>	
<i>Inches</i>	<i>Centimetres</i>	<i>No.</i>	<i>Price</i>	<i>No.</i>	<i>Price</i>	<i>No.</i>	<i>Price</i>	<i>No.</i>	<i>Price</i>
2 1/4 x 3 1/4	6 x 9	V520	2/11	SS520	4/-	F520	4/-	520	2/8
2 1/2 x 4 1/4	6.5 x 11	V516	3/6
3 1/4 x 4 1/4	8 x 10.5	V518	5/-	SS518	6/3	F518	6/3	518	4/6
3 x 5 1/2	7.5 x 13.5	V542	6/-
3 1/2 x 5 1/2	8 x 14	V522	6/4

* For Six-20 Duo "Kodak" read 16 exposures instead of 8.

Please ask us about prices of sizes not shown here.

FLAT FILMS

FOR USE IN "ANCA," "RECOMAR," AND OTHER CAMERAS

FOR the "Anca" and "Recomar" cameras described on page 25, and other non-roll-film models, Kodak Film is available in the form of flat cut films that can be loaded into ordinary plate-holders.

They have the twin advantages of being very much lighter than plates, and completely unbreakable. Added to these physical advantages they possess fine-quality sensitive emulsions that give beautiful negatives, as the widespread use of these films by professional photographers shows.

EASTMAN PORTRAIT FILM is made in three grades; Par Speed—suitable for average subjects; Super Speed Ortho—for use when extra speed is called for; and High Speed Ortho Anti-halo, Matt Back—for difficult subjects with contrasty lightings.

EASTMAN SUPER SENSITIVE PANCHROMATIC FILM has the same array of qualities as Kodak "S.S. Pan" Film described on page 37, chief among which are extremely high speed, especial sensitivity to artificial light, and all-round colour sensitivity.

<i>Size Inches</i>		<i>Eastman Portrait Film</i>	<i>Eastman Super Sensitive Panchromatic Film</i>
3¼ × 2¼	per dozen	1/8	1/10
3½ × 2½	„	1/8	1/10
4¼ × 3¼	„	2/6	2/9
5½ × 3½	„	4/2	4/6
5 × 4	„	4/2	4/6
6½ × 4¾	„	5/6	6/-

For prices of other sizes please ask us.

CUT FILM SHEATHS

Allow cut films to be used in ordinary plate-holders.

<i>Size</i>		<i>Size</i>	
3¼ × 2¼ in. 6d	5 × 4 in. 9d
3½ × 2½ in. 6d	5½ × 3½ in. 9d
4¼ × 3¼ in. 6d	6½ × 4¾ in. 1/-

"VELOX"

**THE NAME IS ON
THE BACK OF
EVERY PRINT**



KODAK Film and "Velox"—the Kodak Printing Paper—work together to give good pictures.

Kodak Film gets the quality in the negative; "Velox" gets it in the print. By providing no less than four grades for amateur use, "Velox" enables the best possible print to be "coaxed" out of every negative, even those which have departed from the normal in exposure or development. The four grades are—Soft, Medium, Vigorous, and Extra Contrast. A flat negative, for example, needs the Vigorous grade of "Velox", while a hard negative is best printed on the Soft grade.

In the matter of surface, too—a question of personal taste—"Velox" offers you ample choice. All grades except Extra Contrast are available in an Art (satin), Glossy (highly glazed), or Carbon (dead matt) finish. Extra Contrast is made in Art and Glossy only.

Supplied in all popular sizes in 6d. and 1/- packets.

For Kodak Bromide Papers see next page.

IF YOU DO YOUR OWN ENLARGING, USE

KODAK BROMIDE PAPERS

“THE bigger the better” is nearly always true of snapshots, and they look best of all enlarged on Kodak Bromide Paper. There is a great variety of grades to choose from, so that you can suit any particular subject with your own choice of colour and texture of paper—rough cream for landscapes, glossy black-and-white for fine detail work, etc. Most grades are made in three degrees of contrast.

Some leading grades—“Nikko” (glossy); Velvet (semi-matt); Kodak Tinted Royal (cream rough); Kodak Fine Grained Tinted Royal.

For more advanced work there is Kodak Bromoil Paper and “Transferype” Paper which enables you to transfer enlargements on to glass, tiles, metal, etc. Please ask for details.

Supplied in all popular sizes in 6d. and 1/- packets.

THE EASIEST WAY TO MAKE YOUR OWN PRINTS

KODAK PRINTING-OUT PAPERS

NEITHER darkroom nor experience is needed to make excellent prints with “Kodatone” or *Self-toning* “Solio”. All you have to do is to put the negative and a sheet of one of these papers in a printing frame and expose them to daylight. The picture then “prints out” in front of your eyes. When the print is dark enough you take it out and “fix” it in a simple solution of Hypo and water. Then it only needs drying to be all ready for the album. You can vary the tones at will by using in addition a bath of common salt and water.

“Kodatone” is made in White (Matt and Glossy), and in Cream (Matt); Self-toning “Solio” in Glossy only. Both are supplied in all popular sizes in 6d. and 1/- packets.

LENS ATTACHMENTS

THAT ENABLE YOU TO DO NEW THINGS WITH YOUR KODAK CAMERA

KODAK PORTRAIT ATTACHMENT

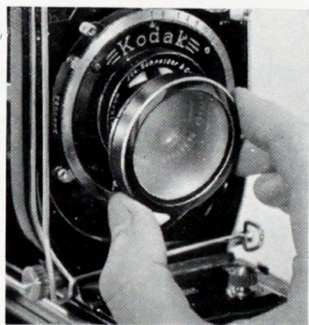
HEAD-AND-SHOULDER portraits of your friends, interesting "close-ups" of animals and flowers—pictures like these add interest and variety to your photography. And you can take them with all Kodak cameras. Those models that have a fixed focus lens or one focussing only to 5 feet simply need the addition of a Kodak Portrait Attachment. This is a little extra lens that slips over the ordinary lens and allows you to bring the camera right up close to any subject and still get sharp clear pictures of it. The Portrait Attachment makes no difference to the exposure necessary.

Kodak Portrait Attachments are made in a number of sizes to fit all types of Kodak lenses. Please let us know the name of your camera and its lens equipment when ordering; if possible bring us the camera itself.

Kodak Portrait Attachment (any size) 3/-

Some people prefer pictures that are not absolutely sharp in outline but artistically "diffused". For their benefit the **KODAK DIFFUSION PORTRAIT ATTACHMENT** (for "close-ups") and **KODAK PICTORIAL DIFFUSION DISK** (for views) are made in sizes to fit most Kodak models.

They are available from 7/6 each, according to size.



KODAK COLOUR FILTER—This is a yellow-tinted lens attachment which slips over the ordinary camera lens in the same way as the Kodak Portrait Attachment.

It gives added brilliance and truth to your pictures by ensuring that nature's colours are rendered more accurately into black-and-white and the fine shades between. The yellow "holds back" the over-active blues and allows the yellow and greens in the subject time to record themselves properly on the film. It improves landscapes, too, by making the most of cloud detail in the sky.

The Kodak Colour Filter is best used with Kodak "Verichrome", "Panatomic", or Super-Sensitive Panchromatic Film. It necessitates a rather longer exposure than normal.

Prices from 4/6, according to size.



KODAK SKY FILTER—This resembles the Colour Filter in appearance, except that the upper half only is coloured yellow. When the Sky Filter is placed on the camera lens it restrains the blue light from the sky, allowing the clouds to register themselves on the film, but does not affect the foreground. The result is it brings out full cloud detail without demanding increased exposures.

Prices from 4/6, according to size.



KODAK OPTICAL OUTFIT—A complete set of Kodak Lens Attachments—Portrait Attachment, Colour Filter and Sky Filter, in a neat velvet-lined case which can be slipped into the pocket. There is a compartment for each attachment with its name blocked in gilt above. Prices from 14/-, according to size.

Please give name of camera, and lens and shutter equipment, when ordering any of the above Kodak Lens Attachments.

SHUTTER RELEASES



KODAK CABLE SHUTTER RELEASES The advantage of using a cable release over pressing the trigger with the finger is that there is far less possibility of jarring the camera and so spoiling the picture. Kodak Cable Releases are strong and lasting, and can be used in all climates. They are made in different sizes to fit different cameras; please consult us for details.

Price each, all sizes 2/-

KODAK SELF TIMER Enables you to go in for self-photography with cameras not already fitted with a Delayed Action Device. Presses the trigger for you and so enables you to include yourself in the picture. Can be fitted to any "Kodak" with cable release. *Made in U.S.A.*

Price 6/-

PRICES OF KODAK LENS ATTACHMENTS

For descriptions see previous two pages.

	Order by this No.	Portrait Attach- ment	Diffusion Portrait Attach- ment	Pictorial Diffusion Disks	Sky and Colour Filters
FOR "BROWNIE" CAMERAS					
Six-20 "Brownie"	13	12/6	6/6
Six-20 "Brownie" Junior	1J	3/-	4/6
Six-20 "Brownie" Junior Super Model	1J	3/-	4/6
Six-20 Portrait "Brownie"	1J	4/6
Baby "Brownie"	3	3/-	7/6	12/6	6/6
Six-16 "Brownie"	7A	3/-	7/6	17/6	6/6
FOR JIFFY "KODAK" V.P.	13	3/-	7/6	12/6	6/6
FOR SIX-20 "KODAKS"					
K.S. Anastigmat, f6.3	20	6/6
K.S. Anastigmat, f4.5	7A	17/6	6/6
FOR SIX-20 "KODAKS" JUNIOR (INCLUDING DE-LUXE MODEL)					
Kodak Anastigmat, f6.3, f7.7 or Doublet lens	13	3/-	7/6	12/6	6/6
"Twindar" Lens	6A	3/-	7/6	17/6	6/6
FOR SIX-16 "KODAKS"					
K.S. Anastigmat, f6.3	20	6/6
K.S. Anastigmat, f4.5	22	6/6
FOR SIX-16 "KODAKS" JUNIOR					
"Twindar"	7A	3/-	7/6	17/6	6/6
Kodak Anastigmat, f6.3	13	3/-	7/6	12/6	6/6
FOR KODAK "REGENT"					
Zeiss "Tessar" f4.5	5	...	7/6	17/6	6/6

For attachments for other models please consult us.

CARRYING CASES

FOR "KODAKS" AND "BROWNIES"

EVERY camera is worthy of a case. Slung by a strap over the shoulder it keeps the camera out of harm's way and out of yours, saves it from accidental knocks and protects it from dust.



KODAK LEATHER CASES Made of Black or Tan Hide. The colouring is fast and will not rub off on your clothes should the case get wet. Smart cut, velvet lined.

TO TAKE		TO TAKE	
Jiffy "Kodak" V.P.	6/9	SIX-20 Duo "Kodak"	9/-
SIX-20 "Kodak"	9/-	"Retina"	12/6
SIX-20 "Kodak" Junior (all models)	9/-	"Anca", 3 slides and film pack adapter—No. 14	12/6
SIX-16 "Kodak"	10/-	No. 28	17/6
SIX-16 "Kodak" Junior	10/-	"Recomar", 3 slides and film pack adapter—No. 18 or 13	17/6

LIMP LEATHER, MOROCCO FINISH

For Jiffy "Kodak" V.P.	each	3/-
For SIX-20 "Kodak" and SIX-20 "Kodak" Junior (all models)	"	3/-
For all SIX-20 "Brownies"	"	3/6

TAN MAIL WATERPROOF CANVAS CASES These inexpensive canvas cases are strong and durable. They are bound with leather and fitted with shoulder straps.

TO TAKE		TO TAKE	
SIX-20 "Kodak" Junior	2/6	SIX-20 "Brownie" Junior Super Model	2/6
SIX-16 "Kodak" Junior	2/9	SIX-20 Portrait "Brownie"	2/6
SIX-20 "Brownie"	2/6	SIX-16 "Brownie"	2/9
SIX-20 "Brownie" Junior	2/6		

CASES FOR VEST POCKET "KODAKS" Please specify model of Camera when ordering, as there are different sizes.

Tan Mail Waterproof Canvas	2/-	Seal Grain Case	3/-	Hide Sling Case	6/9
--------------------------------------	-----	---------------------------	-----	---------------------------	-----

CASES FOR BABY "BROWNIE"

PURSE CASE Black Cloth, with wrist strap	1/-
SLING TYPE Brown Imitation Pigskin, with adjustable shoulder strap	1/6

WATERPROOF OUTDOOR CASE For Hikers and Cyclists. Green Waterproof Cloth, with loop for attaching to belt. Special clip allows case to be fastened to handle-bars of cycle 2/6

WHEN YOU GIVE "TIME" EXPOSURES

KODAK TRIPODS

AND POCKET TRIPODS

SOMETIMES you have to give "Time" exposures—for indoor pictures or shots of floodlit buildings, for instance—and a convenient resting place for the camera is not always handy. On these occasions you need a Kodak Tripod.

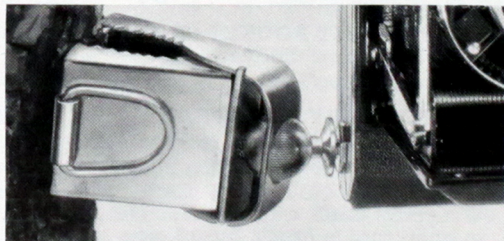
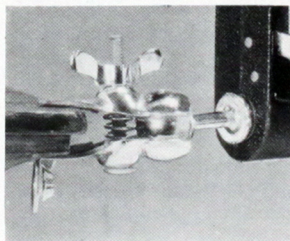
KODAK METAL TRIPODS are light, rigid and strong, and telescope up into a small space for carrying. Nos. 1 and 2 have revolving heads so that the camera can be swung round without moving the tripod; they are fitted with fastening straps. No. 0 has a fixed head and no straps.

DETAILS AND PRICES

No.	Sections	Closed	Extended	Weight	Price of Tripod	Price of Leather Case
0	3	15½ in.	39½ in.	15 oz.	13/6	9/-
1	4	15 in.	48½ in.	24¼ oz.	21/-	9/-
2	5	13½ in.	49½ in.	25 oz.	25/-	8/6
Rubber Tips for tripod feet, per set of 3					9d.	

When a Kodak Metal Tripod would be in the way, the "**KODAPOD**" provides an effective substitute. This is, in effect, a pocket tripod. It has toothed jaws at one end which will grip firmly on to tree or post; a clamping screw at the other holds the camera firmly in position during exposure. Price 8/6

THE "OPTIPOD". Another form of pocket tripod. The clamp is felt-lined so that it can be fixed on to a chair, table, etc. without risk of marking the surface. A ball and socket joint allows the camera to be adjusted to any angle. The "Optipod" can also be used on an ordinary tripod for tilting the camera in any direction to get unusual angle shots. Price 7/6.



IT'S DAYLIGHT ALL THE WAY WITH THE

KODAK FILM TANK

Do you do your own developing? If so, do it the easy Kodak way. There's no rigging up a makeshift darkroom in the cellar; it's daylight all the way with the Kodak Film Tank. The film is first wound up in a light - proof



“apron”; then the “apron”, with the film inside it, and safely shielded from light, is put into the developing solution for a standard time and afterwards fixed and washed. There's no skill required, you can't go wrong, and the whole operation can be carried out in the comfort of an ordinary room. Full instructions in every Tank.

PRICES

Kodak Film Tank No. 2 $\frac{1}{2}$, for all Kodak Films taking pictures 3 $\frac{1}{2}$ × 2 $\frac{1}{4}$ inches or less	£1 1 0
Kodak Film Tank No. 2 $\frac{3}{8}$, for all Kodak Films taking pictures 4 $\frac{1}{4}$ × 2 $\frac{1}{2}$ inches or less	1 10 0
Kodak Film Tank No. 3 $\frac{1}{2}$, for all Kodak Films taking pictures 5 $\frac{1}{2}$ × 3 $\frac{1}{4}$ inches or less	1 17 6

For Developing Powders for use with these Tanks, see page 57

DEVELOPING AND PRINTING AIDS

FOR THE MAN WHO 'DOES HIS OWN'

KODAK FILM PACK TANK Apart from the initial loading of the film into the Tank, which is done in the dark, all the convenience of daylight developing can be enjoyed by film pack users as well by means of the Kodak Film Pack Tank. It holds 12 films, so that all or part of a pack can be handled at once, and the negatives are of the high quality characteristic of the time and temperature method of development.

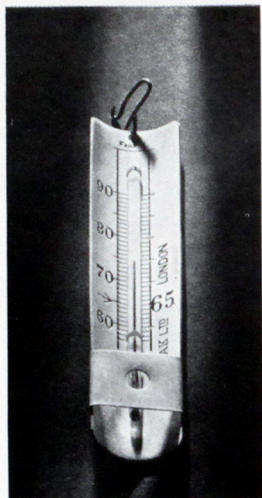
No. 1 for $3\frac{1}{2} \times 2\frac{1}{2}$ in. or $6\frac{1}{2} \times 9$ cm. films . . . 8/6
 No. 2 for all sizes of films up to $5\frac{1}{2} \times 3\frac{1}{4}$ in. . . 15/-
 Developing Powders, per packet of 6—for No. 1
 Tank 1/-; for No. 2 Tank 1/6

KODAK FILM CLIPS useful for holding the ends of the film during dish development and when it is hung up to dry.

Kodak Film Clip with 2-inch jaws 1/6

KODAK JUNIOR FILM CLIP No. 1 A narrower clip suitable for narrow films such as Vest Pocket size 9d



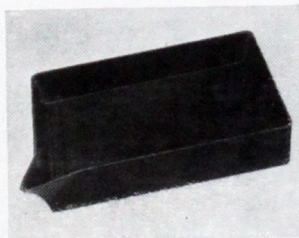


KODAK THERMOMETER Whether you develop by Tank or dish you need to know the temperature of your solutions accurately to get the best negatives. The Kodak Thermometer is made specially for photographic purposes; the degrees are boldly marked and widely spaced; they range from 60° to 90° F. Provided with a hook which allows it to be suspended inside a Tank. Price 3/-

KODAK THERMOMETER STIRRING ROD A combination of two darkroom necessities. Consists of a glass stirring rod $\frac{1}{4}$ inch in diameter and $9\frac{1}{4}$ inches long, enclosing a reliable tested thermometer. One end is flattened for the purpose of crushing chemicals. Invaluable as a time-saver; the temperature is taken while the chemicals are dissolving. Fahrenheit will be sent unless Centigrade specially ordered. In wooden box 5/6

DISHES Available in "Kodaloid" (assorted colours), Bakelite (black or mottled red) and Porcelain.

Sizes	"Kodaloid"	Bakelite	Porcelain
$3\frac{1}{2} \times 2\frac{1}{2}$ in.	5d	—	1/3
$4\frac{1}{4} \times 3\frac{1}{4}$ in.	7d	1/3	1/9
5 × 4 in.	8d	—	2/-
$5\frac{1}{2} \times 3\frac{1}{2}$ in.	8d	1/9	2/-
$6\frac{1}{2} \times 4\frac{3}{4}$ in.	1/-	2/3	2/9
$8\frac{1}{2} \times 6\frac{1}{2}$ in.	1/4	3/3	4/6



Prices of larger sizes on application

IF YOU MAKE YOUR OWN PRINTS

KODAK PRINTING AIDS

PRINTING FRAMES

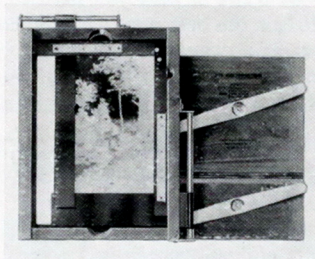
WHETHER you use daylight paper ("Kodaton" or "Solio") or gaslight paper ("Velox") you need a printing frame. We have them in all standard sizes and several varieties—

THE EASTMAN NON-SLIP PRINTING FRAME, strong, well-finished in varnished wood. Prices—1/3 in the Vest Pocket ($2\frac{1}{2}$ in. \times $1\frac{1}{8}$ in.) size; 1/4 in the $3\frac{1}{4}$ in. \times $2\frac{1}{4}$ in. size. Larger sizes also available.

THE POPULAR PRINTING FRAME, cheaper but thoroughly efficient. Complete with glass—11d in the Vest Pocket size; 1/- in the $3\frac{1}{4}$ in. \times $2\frac{1}{4}$ in. size. Larger sizes also available.

THE KODAK AUTO-MASK PRINTING FRAME takes any negative up to 5 in. \times 4 in. or $5\frac{1}{2}$ in. \times $3\frac{1}{2}$ in.

Has own set of masks which make it easy to get even, white borders on prints of any size. Price 8/6



"KODALOID" PRINTING MASKS A

"Kodaloid" Mask is a sheet of transparent orange material with an opening in the centre a little smaller than the negative from which you are printing. Although transparent the Mask is non-actinic (will not let photographically-active light through) so that by arranging a negative over the opening and placing the printing paper on the other side, you surround each picture with a neat white border. From 6d each according to size.

PRINT TRIMMERS

A print must be trimmed square and straight to look its best. And trimming often improves composition.

With a Kodak Print Trimmer you can be sure of a straight, clean cut.

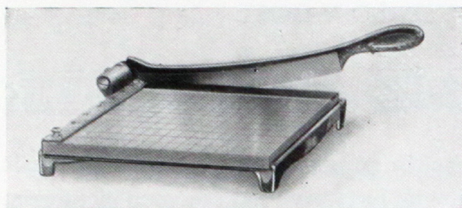
THE KODAK PRINT TRIMMING BOARD is fitted with a rule and fine quality steel blade. The blade can be detached for sharpening.

PRICES—

For prints up to 5 in. 4/6

For prints up to 7 in. 5/6



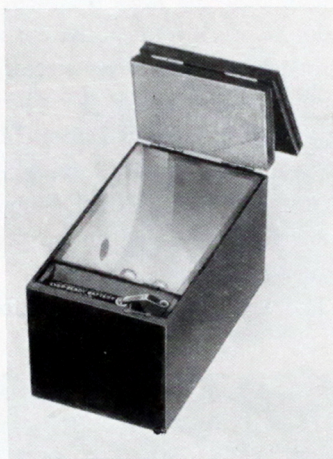


THE "EASTKO" TRIMMER
 has a wooden rule and a substantial fine-quality knife; the bed is ruled off in half-inch squares. Will trim enlargements up to 10 in. . . . £1 15 0

PRINTERS

For making numbers of prints you will find one of the Kodak Printers a great advantage over an ordinary printing frame. They are easy to handle, allow you to work speedily, and as the printing light and distance remain constant, enable you to standardise exposures.

THE "RAPID" ELECTRIC PRINTING BOX consists of wooden box with glass printing surface at the top covered by hinged lid. Inside the box are a red and a white electric light bulb. When the lid is opened the red light is switched on, giving sufficient safe light to enable you to adjust negative, mask and paper. When the lid is pressed down, the red light goes out and the printing light is automatically switched on to make the exposures. Works from an ordinary torch battery. Takes all negatives up to 6 x 4 in. Complete with bulbs and battery
 PRICE 12/6



KODAK AMATEUR PRINTER
 works on the same principle as the "Rapid" described above. Plugs into the ordinary electric light circuit and so allows a more powerful light to be used (40-watt pearl lamp advised). Masking device allows prints with white margins of any size from 2½ in. x 1¾ in. up to 5 in. x 4 in. or 5½ in. x 3¼ in. to be made.

PRICE—Complete with 5½ feet of flex and plug, but without lamps £3 3 0

EASY-TO-USE, LOW-COST

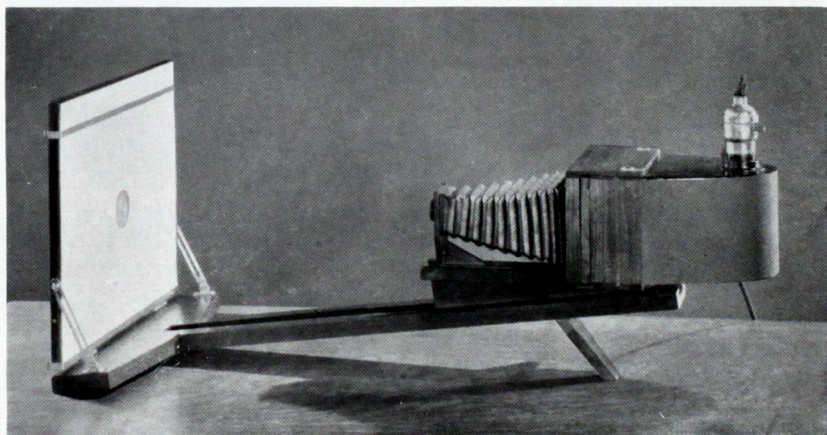
KODAK HOME ENLARGER

AN ordinary print, the same size as the negative from which it is made, is by no means the end of the photographic story. To see your pictures at their best you must see them as enlargements, and if you have a mind to do this work yourself there is no easier way than by using the Kodak Home Enlarger. It takes any size of negative from half Vest Pocket ($1\frac{5}{8} \times 1\frac{1}{4}$ in.) up to and including $4\frac{1}{4} \times 3\frac{1}{4}$ in. and 9×12 cm.—that is to say all the most popular sizes—and makes enlargements up to 14×11 in.

It consists of an easel, on which the Kodak Bromide Paper is pinned, and a camera portion, which contains the electric lamp and lens.

For focussing, the camera portion is slid to or from the screen along a grooved wooden support.

The whole Enlarger can be folded up compactly after use.



KODAK HOME ENLARGER, without lamp, but complete with "Kodak" (98-mm.) Lens, negative holder, paper holder and full instructions £5 12 6

60-Watt lamp advised—obtainable at any electrician's

AND OTHER DARKROOM EQUIPMENT

FOR enlarging work (and also for developing film if you do not use a Kodak Film Tank) you need a darkroom lamp to give you "safe" light that will not fog your sensitive material.

THE WRATTEN SAFELIGHT LAMP is made for use with electric light, gas, or oil. Any Safelight can be supplied, suitable for Kodak Bromide Papers, Kodak "Verichrome" Film, Kodak Super Sensitive Panchromatic Film, etc. Please ask for full details.

Wratten Safelight Lamps, complete with
one Safelight from £1 0 0

THE "PROGRESS" DARKROOM LAMP. An inexpensive little lamp for nightlight or oil.

Model 1, for nightlight 1/6
Model 3, for oil 2/3

FERROTYPE PLATES. Polished metal plates that enable you to give a high gloss to your pictures. The prints or enlargements are squeegeed down on to the plate while wet.

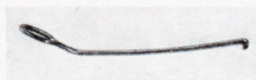
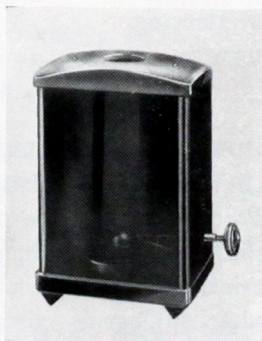
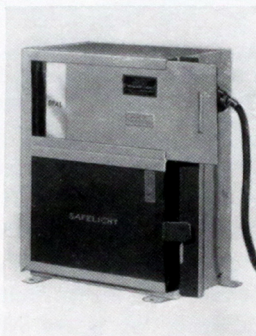
14 × 10 in. each 1/-

GLASS MEASURES. Graduated vessels for measuring out solutions, etc. accurately. In all sizes from 1 drachm to 40 ozs. (1 quart).

PRICE from 9d to 4/-

EASTMAN PRINT PADDLE. Enables you to manipulate prints in the fixing bath without getting hypo on your fingers. Made of hard rubber moulded round an aluminium core.

PRICE 2/6



SUNDRIES FOR THE

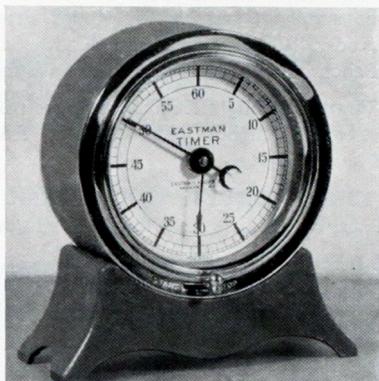
HOME DARKROOM

KODAK PUSH PINS. For pinning up films and prints to dry.

Box of 12—With composite heads	1/3
With aluminium heads	9d

EASTMAN TIMER. The Eastman Timer enables the photographer to time exposure and development with absolute accuracy. The dial is large and boldly marked. It has a second and a minute hand; both can be set quickly by the turn of a key, and the Timer can be instantly started or stopped. A heavy iron base safeguards the clock against accidental overturning.

PRICE 27/6



KODAK PRINT ROLLER. For squeegeeing prints and enlargements on to Ferrotype Plates (see page 53), and for quick, clean mounting. Two 6-inch rubber rollers suspended from nickelled handle give firm, even pressure.

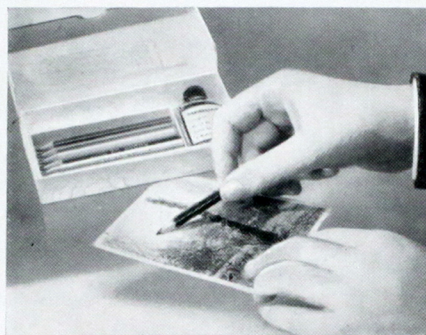
PRICE 7/6



MAKING THE MOST OF YOUR PICTURES

COLOURING - RETOUCHING

THERE'S endless fun in tinting snaps, and it is particularly easy to do with these Kodak Outfits. You haven't got to be an "artist"; the outlines of the black - and - white picture are there to guide you, and as the colours are transparent it is very easy to follow them and produce excellent coloured pictures.



"VELOX" TRANSPARENT WATER COLOUR STAMPS A "book" of 12 different coloured paper "leaves", each "leaf" being perforated into 26 small squares. These are detached and dissolved in water to make the actual tinting solutions. Also useful for tinting lantern slides. Full instructions enclosed. Price 2/6

"VELOX" WATER COLOUR OUTFIT Complete colouring outfit—Book of "Velox" Water Colour Stamps (see above) and three brushes in box, the lid of which forms a mixing palette. Price 6/- *Made in U.S.A.*

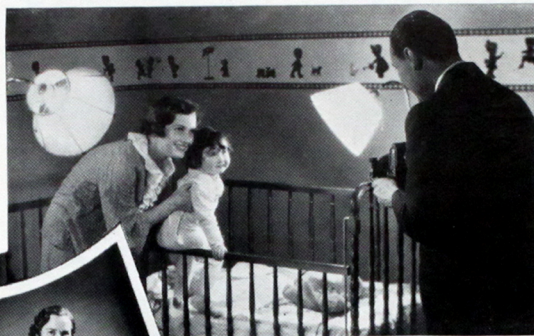
KODAK SOLUBLE CRAYON OUTFIT Another simple colouring outfit—Seven $3\frac{1}{2}$ in. coloured pencils, bottle of medium, and roll of cotton wool. Complete with instructions. Price 2/6
For retouching and "working up" negatives and prints—fascinating work for enthusiasts—there are—

KODAK RETOUCHING SET FOR NEGATIVES Pencil-holder, three refills, retouching medium, spotting medium, spotting brush . . . 3/6

KODAK BROMIDE RETOUCHING SET For bromide enlargements. Four crayons—two black, one sepia, one white—in box . . . 2/-

KODAK SPOTTING PALETTE including eight colours and brush 1/3

PICTURE-TAKING AT NIGHT



SUNSET is no longer "closing time" for your camera. Load it with Kodak Super Sensitive Panchromatic Film, which is especially sensitive to artificial light, switch on the brilliant "Photoflood" Lamps

described below, and you can take an evening party, baby in his bath, a fireside group—unusual, intimate pictures—with quite short exposures. And using the "Sashalite" you can take snapshots indoors with *any* camera.



"PHOTOFLOOD" LAMP Plugs into electric light socket just like an ordinary electric bulb; gives powerful continuous light sufficient for an immense number of pictures. Made in all standard voltages 2/6

"KODAFLECTOR" REFLECTOR Specially designed aluminium reflector for "Photoflood". Increases efficiency of illumination at least 4½ times, decreases necessary exposure times accordingly. Fits on to any standard lamp-holder 3/—

"KODAFLECTOR" OUTFIT Consists of "Kodaflector" Reflector plus handy wire stand enabling "Kodaflector" to be stood on table or chair, suspended from picture-rail or shelf. Complete with 9 feet of flex, bayonet adapter to fit any electric socket, and bayonet lamp-holder for "Photoflood" but without "Photoflood" Lamp 7/6

"KODAFLECTOR" TWO-UNIT FLOOR STAND Collapsible tubular stand, height fully extended, 6 ft. Fitted with two horizontal arms, each swivelling independently in any direction and each holding a "Kodaflector" Reflector and "Photoflood" Lamp. Complete with two "Kodaflectors" but without "Photofloods" 38/—

BABY "SASHALITE" BULB The modern successor to flashlight. No smoke, no smell, no danger. Gives one brilliant flash; fired by pocket torch battery 10½d

"SASHALITE" AMATEUR OUTFIT Consists of two Baby "Sashalite" Bulbs, battery in holder, and collapsible reflector 7/6

FOR DEVELOPING, FIXING, SEPIA TONING etc KODAK TESTED CHEMICALS

As well as being available for the photographer who does his own finishing work, many Kodak Tested Chemicals are used by Kodak Ltd themselves in the manufacture of Kodak products; a sufficient guarantee of rigorous purity and finest quality.



KODAK DEVELOPING POWDERS

KODAK SPECIAL DEVELOPER, HYDROQUINONE, *ELON QUINOL, *ELON, PYRO-*ELON, PYRO-SODA, VELOX DEVELOPER. In packet form ready for mixing. Convenient, reliable, and economical. They are sold in boxes of 6 packets at 1/6 per box.

TANK DEVELOPER POWDERS

For Kodak Film Tank No. 1	Per Pkt. of 6 Powders	-19
For Kodak Film Tank Nos. 2 and 2½		-19
For Kodak Film Tank Nos. 2½ and 3½		1/3
For Kodak Film Tank No. 5		1/6
Powders for "Brownie" Developing Box		-19

DEVELOPERS AND OTHER CHEMICALS IN SOLUTION As some amateurs prefer their developers, etc. already prepared for use on dilution, the following have been prepared—

Kodak Special Developer, 8-oz. bottle, making 16 to 32 oz. Developer	1/3	"Kodol" Highly Concentrated Single Solution Developer (3 oz. make 75 oz. and upwards)	2/-
"Velox" Concentrated Developer, 8-oz. bottle, making 16 to 32 oz. Developer	1/3	Potassium Bromide 10% Solution, per bottle	-19
Kodak *Elon Quinol Developer, 8-oz. bottle, making 32 oz. Developer	1/3		

FIXERS, TONERS, INTENSIFIER etc

Kodak Acid Fixing Salt, requires only dissolving in water to make an acid fixing bath. In tins—¼ lb., 7d; ½ lb. 10d.; 1 lb.	1/6	Kodak "Hypo" (Hyposulphite of Soda) in clear pea crystals, per lb.	-16
Chromium Intensifier Cartridges, for intensifying weak negatives. In glass tubes, each tube making 8 oz. of Intensifier. per half dozen	2/6	Kodak Sepia Toner, for toning "Velox" or Bromide prints to rich sepias, per set	2/6
		Kodak Liquid Hardener, for making Acid Fixing Bath with Hypo 8-oz. bottle	1/3

* Known also as Metol

GIVE YOUR PICTURES A GOOD HOME—IN KODAK ALBUMS

LOOSE in a packet, mislaid in a drawer—or neatly set out in an album, titled, ready to show your friends?

No question which is the better way to keep snapshots!

On this and the next two pages are some attractive albums and mounts, which will enable you to do your snapshots full justice, and some easy-to-use accessories that make mounting a clean, quick, and interesting process.

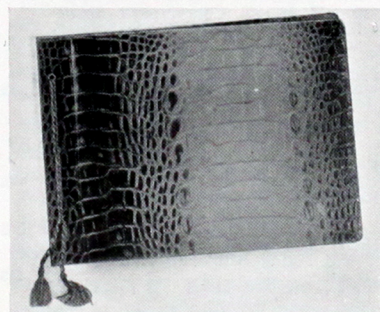
SLIP-IN ALBUMS

In these the leaves have openings the same size as the picture, under which the prints are slipped; no actual mounting is necessary.



THE "LYNTON" Brown or Grey covers of leather cloth with sheepskin grain. Leaves to match cover, secured by silk-finished tasselled cord. Holds 96 prints.

For $2\frac{1}{2} \times 1\frac{1}{8}$ in. prints	4/6
„ $3\frac{1}{4} \times 2\frac{1}{4}$ in. „	5/-
„ $4\frac{1}{4} \times 2\frac{1}{2}$ in. „	6/-



THE "OXFORD" Brown covers of polished leather cloth with crocodile finish. Tasselled cord. Holds 96 prints.

For $2\frac{1}{2} \times 1\frac{1}{8}$ in. prints	4/6
„ $3\frac{1}{4} \times 2\frac{1}{4}$ in. „	5/6
„ $4\frac{1}{4} \times 2\frac{1}{2}$ in. „	6/6

THE "ROAN" Inexpensive album bound in stout card with brown leather-grain finish. Holds 48 prints. ($2\frac{1}{2} \times 1\frac{1}{8}$ in. size, 36 prints.)

For $2\frac{1}{2} \times 1\frac{1}{8}$ in. prints	9d
„ $3\frac{1}{4} \times 2\frac{1}{4}$ in. „	1/3
„ $4\frac{1}{4} \times 2\frac{1}{2}$ in. „	1/6

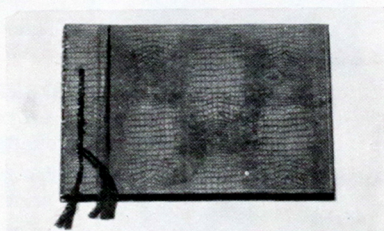


PASTE-ON ALBUMS

The paste-on type of album allows you to have more than one size of print in the same album, and you can make your own arrangement of prints on each page.

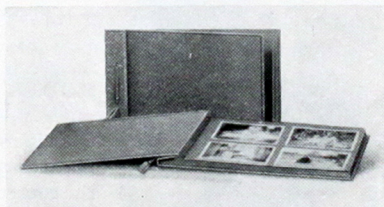
THE "ASTON" Leather-finished card covers of Antwerp blue; 12 light grey leaves held in place by silk-finished tasselled cord.

Size— $6 \times 4\frac{3}{8}$ in. 6d



THE "PURLEY" Stout light-grey grained card covers. Twelve leaves to match; silk-finished tasselled cord.

Size— $7\frac{1}{8} \times 6$ in. 1/-



THE "RHODES" Cover of embossed black book-cloth with word "Photographs" stamped in gilt. Fifty stout black paper leaves.

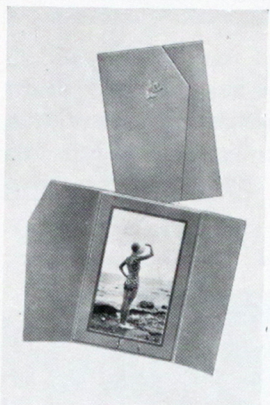
Size— 8×5 in. 3/-
 11×7 in. 4/6

This is a small selection only; we have many others to show you.



NEW WAYS OF MOUNTING YOUR PICTURES

OTHER attractive ways of mounting prints and enlargements are (1) on cards, (2) in folders, (3) in passe-partout frames. We recommend—



KODAK LINEN TEXTURE MOUNTS. Stout art papers with linen grain surface, made in 13 different tints. Supplied in packets containing one colour only or in assorted colours. In each packet Adhesive Tints for dry mounting are included.

18 Mounts, 8 × 6 in., including 9 Adhesive Tints	} 1/- per packet
14 Mounts, 10 × 8 in., including 7 Adhesive Tints	
9 Mounts, 12 × 10 in., including 4 Adhesive Tints	

“FRIENDSHIP” FOLDER. Made of good quality card, and art paper with linen grain surface. Print opening surrounded by border of darker tint. Brown or Grey.

Per doz. Per 100

For prints 2½ × 1½ in.	11d	6/3
„ „ 3¼ × 2¼ in.	1/3	9/-
„ „ 4¼ × 2½ in.	1/5	9/6

Larger sizes also available.



KODAK METAL PASSE-PARTOUT FRAME. The quickest, simplest way of framing with glass, applicable equally to mounted or unmounted prints. The glass is placed over the picture, the frame fitted round it, and the corners fixed by pushing metal tabs through the slots provided. The frame is provided with a reversible strut for standing it in upright or horizontal positions, and a metal hook for hanging it on the wall.

	5½ × 3½	6½ × 4¼	8½ × 6½	10 × 8
Black Finish	1/6	1/9	2/-	2/6
Brown Finish	1/6	1/9	2/-	2/6
Oxidise Finish	2/-	2/-	2/9	3/-
Bronze Finish	1/9	1/9	2/6	3/-

MOUNTING AIDS

FOR MOUNTING WITHOUT MESS

EASTMAN DOUBLE-COATED MOUNTING TAPE Does away with all necessity for paste-pot and brush. The tape is simply moistened on one side and placed round back of print; the other side moistened and the print pressed down on mount. Quick, clean, simple.

Per roll of 50 feet . . . 1/6 Per roll of 100 feet . . . 2/-

KODAK MOUNTING STAMPS Book of 24 sheets, each sheet perforated to make 24 stamps, gummed on both sides. Method of use similar to that of Eastman Double-coated Mounting Tape.

Per Book 3d

KODAK MOUNTING CORNERS Hold print at four corners on mount or album page. Made in Black, Grey, or Brown.

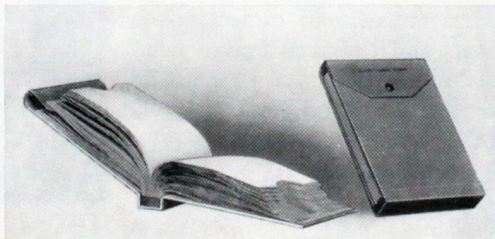
Per Packet of 100 3d

STORE YOUR NEGATIVES SAFELY, TOO, IN A KODAK NEGATIVE ALBUM

It is important to keep your negatives safe and accessible as well as your prints, and the Kodak Negative Album provides the best way of doing it. This is a "book" of 100 transparent envelopes numbered consecutively on the outside. An index at the front is similarly numbered, so that you can note down the subject of each negative as you file it away and be sure of turning any one up in an instant by a glance at your entries in the index.

The negatives can be examined without removing them from their transparent envelopes. A stout cover with press button fastener completes this most useful Album.

Prices from 3/- according to size.



MAKE YOURSELF A BETTER PHOTOGRAPHER BY READING

"HOW TO MAKE GOOD PICTURES"



How to make good pictures? Every camera-owner wants to know, and the answer is—read this wonderful shilling book.

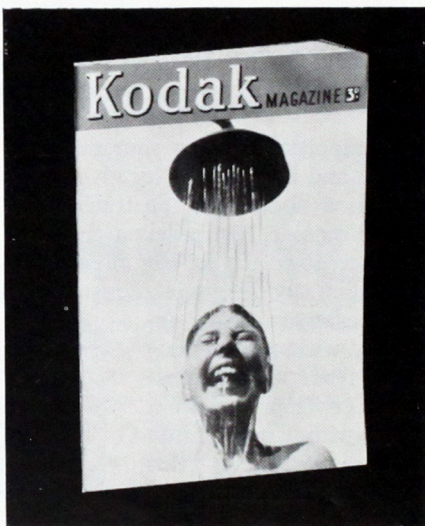
Here is good advice on exposure and composition; simple descriptions of the fundamentals of the photographic process; notes on indoor work, portraiture, colouring and many another photo topic—and there's a picture to nearly every one of the book's 176 pages. For compressed information, instruction and delight "How to Make Good Pictures" stands alone.

You must not miss it. 1/-

"THE KODAK MAGAZINE"

THE monthly journal for everyone who enjoys fine reproductions of fine photographs. In addition to its superb illustrations the Kodak Magazine tells you how to get more out of your camera, gives hints and technical tips in non-technical style, and contains articles on travel, customs, and other general topics.

3d every month. 4/6 a year post free.



INDEX

	PAGE
Albums	58-59
Album, Negative	61
Attachment, Kodak Portrait	42
Bromide Paper	41
"Brownies"	5-9, 19
Camera Cases	45
Cameras—"Brownies"	5-9, 19
Ciné—"Kodaks"	27, 31
"Kodaks"	13-25
Chemicals, Kodak Tested	57
Ciné—"Kodaks"	27, 31
Ciné "Kodagraphs"	35
Clips, Film	48
Developing Tanks	47-48
Dishes	49
Enlarger	52
Ferrotypes	53
Films, Ciné-Kodak	34
Kodak Roll	36-38
Filters, Sky and Colour	43
Frames, Printing	50
"Kodachrome"	34
"Kodaflector" Reflector	56
"Kodaks"	13-25
"Kodapod"	46
"Kodascope" Library	35
"Kodascopes"	29, 33
"Kodatone"	41
Lamps, Darkroom	53

	PAGE
Lenses	10
Library, "Kodascope"	35
Measures	53
Miniature Cameras	20
Mounts, etc.	60
"Optipod"	46
Outfits, Colouring	55
Optical	43
Paddle, Print	53
"Photoflood" Lamp	56
Pins, Push	54
Portrait Attachments	42
Printing Papers	40-41
Printers	51
Releases, Cable	44
Retouching Sundries	55
Roller, Print	54
"Sashalite"	56
Self-Timer	44
Sheaths, Cut Film	39
Shutters	11
"Solio", Self-Toning	41
Tanks, Film	47-48
Thermometer	49
Timer, Eastman	54
Trimmers, Print	50-51
Tripods	46
"Velox" Paper	40
"Velox" Colour Stamps	55



Kodak film





makes *the picture*



A Finishing Note -

The final success of your pictures depends very largely upon the skill of the photo-finisher who develops and prints them.

We offer you a finishing service by expert workers who know how to make the most of every picture on every spool. Although quality is never sacrificed to speed, the time your spools are in our hands is as short as the latest scientific methods can make it.

When your next spool is ready, remember this high-quality finishing service of ours and test it for yourself.