



PREMO  
CAMERAS

# PREMO CAMERAS



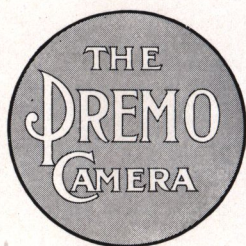
*Manufactured by*  
ROCHESTER OPTICAL DIVISION

EASTMAN KODAK COMPANY

*Rochester, N.Y.*

# P R E M O S

Have been manufactured and have given continuous good service to the public for over thirty years. They not only have these long years of keen manufacturing experience behind them, but are also backed by the policy of the Eastman Kodak Co. of allowing nothing to be placed on the market which will not do all that is claimed for it. Anyone interested in amateur photography will find listed in this catalogue a line of plate, film pack, and roll film cameras from which a most satisfactory choice can be made, no matter what the requirements may be, and each model is efficient and dependable in the fullest sense of the terms.



## P R E M O P R O G R E S S

**T**HE FIRST PREMO, marketed some thirty years ago, was a plate camera. It soon became the leading camera of its time, and in the plate camera field from that time up to the present day the Premo has set the standard. Those who prefer plate cameras for their photographic work will find in the Premo line that convenience of operating, that compact form, that carefully thought out working equipment which only years of specialized experience could produce.

With the advent of film photography, its feature of greater convenience, daylight loading and other advantages were promptly realized, and the Premo Film Pack was placed on the market. This instantly became a most pronounced success. New models of Premo cameras to take these films were introduced and they were so compact, so easy to load and operate, and so reliable that they were speedily adopted by the photographic public and from them has been developed the widely popular line of Premo Film Pack cameras, the latest models of which are shown in this catalogue.

The Premo Film Pack and film pack cameras have acquired a world-wide reputation. The pack is made upon such a simple principle, it loads and unloads so easily, and permits the manufacture of such small cameras for its use that it has an appeal, to many, stronger than that of any other photographic method. Besides, it must be remembered that this is the only film method that allows the user to remove one or more films for development before all are exposed, or to enjoy the advantage of ground glass focusing together with the conveniences of film. By use of a Premo Film Pack Adapter any suitable plate camera can be converted into a daylight loading film camera and the ground glass can be used for focusing just as easily as though plates were being used.

Those who contemplate taking up the fascinating recreation of photography should not overlook the advantages offered in

# P R E M O P R O G R E S S

Premo Film Pack cameras, and those who already have cameras will almost invariably find in the Premo line a camera which will greatly add to the completeness of their photographic equipments.

Then to round out the line, for the benefit of Premo customers who wish to use roll film cameras, this year there have been added several models of cartridge film Premos. These cameras match up with the Premo reputation in every particular. They are designed to use Eastman Cartridge film, and all excepting the No. 00 offer the advantage of daylight development by the tank method.

In a word the Premo line offers you the choice of any desirable type of camera you want—plate, film pack, or roll film. Every Premo, no matter what its style or price, is made with painstaking care. Each one is fitted with the most efficient type of shutter in its particular grade and all lenses from the meniscus to the anastigmat are carefully tested by the highest standard and promptly rejected if they fail to come up to that standard.

Every camera is accompanied by a simply worded, complete book of instructions which, if carefully followed, will enable anyone, even without previous experience, to make good pictures with a Premo from the very beginning.

And to further aid our customers in their photographic work, we send for one year, free of all expense, a monthly photographic magazine of instruction of general information and entertainment. This magazine, *Kodakery*, is sent without any obligation at all to every customer who fills out and returns the *Kodakery* blank, which will be found in every Premo instruction book.

ROCHESTER OPTICAL DIVISION

EASTMAN KODAK CO.,

ROCHESTER, N. Y.

## KODAK BALL BEARING SHUTTER

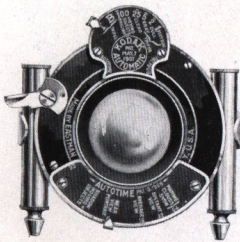
**T**HIS shutter works on ball bearings, giving it great accuracy, and is made in several models corresponding with the scope and design of the cameras to which they are fitted. The illustration shows the shutter as fitted to cameras equipped with Kodak Anastigmat lens, *f.* 7.7, but all models work upon the same general system. The No. 0 model regularly fitted to Premoette Jr. No. 1 and Folding Cartridge Premo No. 2 has time and bulb actions and indicated speeds of  $1/25$  and  $1/50$  second. It has no cable release.



The No. 1 is supplied with Folding Cartridge Premo No. 2A, Premoette Jr. No. 1A, Film Premo No. 1, Pocket Premo C, Premoette Sr., and a modified type with Premo No. 8. This has the same speeds as the No. 0 and in addition the higher speed of  $1/100$  second. It is supplied with cable release in all cases excepting as fitted to 2A Cartridge Premo, where it has finger release only.

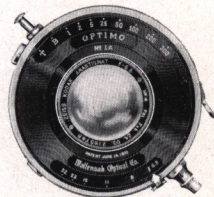
## KODAK AUTOMATIC SHUTTER

The Kodak Automatic is an unusually accurate shutter, adjusted for time, bulb and graduated speeds of 1,  $1/2$ ,  $1/5$ ,  $1/25$  and  $1/100$  second. It works with either cable or finger release, and is regularly supplied with the Filmplate Premo and Premos Nos. 9 and 10.



## OPTIMO SHUTTER

This shutter is recommended only where anastigmat lenses are to be used as it is constructed to attain the highest possible speed for a between-the-lens hand camera shutter. It is a shutter of the setting type, leaves opening in star shape, and besides time and bulb exposure actions, has variable indicated speeds of 1,  $1/2$ ,  $1/5$ ,  $1/25$ ,  $1/50$ ,  $1/100$ ,  $1/200$  and  $1/300$  seconds. It is very accurate on all speeds, is handsomely finished and works with cable or finger release.



This shutter is regularly supplied on the Filmplate Premo Special and the Premo No. 12.

# THE PREMO FILM PACK AND ADAPTER

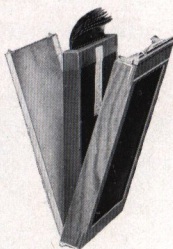
**T**HE Premo film pack may be loaded in the camera in an instant. Just open the camera back, drop in pack, close back and it is done. The changing of the film for successive exposures is just as easy. After the exposure has been made, merely draw out a black



paper tab from the top which pulls the exposed film around to the back, uncovering the next film for exposure. This operation is repeated for each exposure till the last, when the pack is automatically rendered light-proof and may be removed from the camera in any light.

With this simple operation is combined a unique feature in film photography. From the film pack one or more films may be removed at any time for development. You don't have to wait until all are exposed but the camera or adapter may be taken to the dark room and as many films as have been exposed, easily removed, leaving the remainder intact for future exposures. Premo Film Pack film is made from the same stock as Eastman N. C. Film, so the quality is the highest possible.

The Premo Adapter will convert any Premo Plate camera into a daylight loading film camera. It loads in the camera just like a plate holder, is furnished with slide so that at any time the film can be light protected and the adapter removed from the camera, thus combining the light weight and convenience of films with the important feature of ground glass focusing.



## PRICES

### PREMO FILM PACKS

Twelve exposures in each pack.

Size.	Price.	Size.	Price.	Size.	Price.
1 3/4 x 2 3/8, No. 300	\$ .25	3 1/4 x 4 1/4, No. 318	\$ .70	4 x 5, No. 323	\$ .90
2 1/4 x 3 1/4, No. 320	.40	3 x 5 1/4, No. 342	.75	5 x 7, No. 315	1.60
2 1/2 x 4 1/4, No. 316	.50	3 1/4 x 5 1/2, No. 322	.80		

### PREMO FILM PACK ADAPTERS

Size.	Price.	Size.	Price.	Size.	Price.
3 1/4 x 4 1/4	\$1.00	3 1/4 x 5 1/2	\$1.50	5 x 7	\$2.50
3 x 5 1/4	1.50	4 x 5	1.50		

# PREMO JUNIOR CAMERAS



**T**HESE are the simplest types of cameras with which pictures can be made. They require no focusing, no estimating of distances, but are always ready for action.

Premo Juniors are especially desirable for the use of the children, but the care taken in their construction, the selection of lenses and the thorough inspection which each instrument receives, make them perfectly reliable and satisfactory cameras for anyone whose work is not beyond the limits of a single lens.

## SPECIFICATIONS

Capacity: 12 exposures without reloading. Size of Camera: No. 0,  $2\frac{1}{4} \times 3\frac{5}{8} \times 5\frac{1}{4}$  in.; No. 1,  $3\frac{1}{8} \times 4\frac{1}{2} \times 5\frac{3}{4}$  in.; No. 1A,  $3\frac{1}{2} \times 5\frac{1}{2} \times 5\frac{7}{8}$  in.; No. 3,  $4 \times 5\frac{1}{2} \times 5\frac{3}{4}$  in. Weight: No. 0, 7 ozs.; No. 1, 11 ozs.; No. 1A, 14 ozs.; No. 3, 20 ozs. Shutters: Rotary Automatic, all excepting No. 0, with diaphragm stops. Lens: No. 0 and No. 1 Meniscus; No. 1A and 3, Meniscus Achromatic. Finders: two. Tripod Sockets: No. 0, none; Nos. 1, 1A and 3, two.

## PRICES

	No. 0 $1\frac{3}{4} \times 2\frac{3}{8}$	No. 1 $2\frac{1}{4} \times 3\frac{1}{4}$	No. 1A $2\frac{1}{2} \times 4\frac{1}{4}$	No. 3 $3\frac{1}{4} \times 4\frac{1}{4}$
Premo Junior, Meniscus Lens, Automatic Shutter	\$1.50	\$2.00		
Ditto, with Meniscus Achromatic Lens			\$3.00	\$4.00
Carrying Case	.60	.75	.85	1.10
Premo Film Pack (12 exposures)	.25	.40	.50	.70
Kodak Portrait Attachment (see p. 37)		.50	.50	.50



# P R E M O E T T E J U N I O R



**A**LL Premo Film Pack cameras are smaller, for corresponding size pictures, than are cameras of any other type, this compactness being made possible by size and shape of the Premo Film Packs.

Utilizing this feature, in the Premoette Jr. we have designed to offer the smallest possible camera for two of the most popular sizes of amateur pictures— $2\frac{1}{4} \times 3\frac{1}{4}$  and  $2\frac{1}{2} \times 4\frac{1}{4}$ . We have made this camera largely of aluminum, have made its operation correspond in simplicity with the simplicity of the film pack, and we have made it as efficient and reliable, within its scope, as a camera can be made.

The Premoette Jr. is just a trifle larger than the picture it makes, and it is so easy to operate, so well manufactured, so carefully equipped and tested, that the merest beginner in photography can use a Premoette Jr. and get pictures of excellent quality from the very start. Besides this, Premoette Jr. negatives are of such good quality that enlargements up to almost any size can be made from them, when desired. Thus with this little camera, which can be carried in a boy's pocket or a lady's hand-bag, it is easily possible, by the simple process of enlargement, to get pictures as large as those made with the most bulky of view cameras.

# P R E M O E T T E J U N I O R

For this reason many amateurs who have larger outfits are adding these inexpensive little cameras to their equipment. In fact, there is not an amateur photographer in the country, no matter how complete his photographic equipment, who would not find a Premoette Jr. a very convenient and valuable addition to it.

The Premoette Jr. is offered with three different lens equipments—meniscus achromatic, rapid rectilinear, and Kodak Anastigmat, *f.* 7.7. All lenses used must be of the highest quality in its grade and each one must stand a rigid test before it is allowed to go out with the camera. Thus these cameras will produce sharp, clearly defined pictures under all ordinarily favorable conditions.

The shutter used on these cameras is the smoothly working, precise Kodak Ball Bearing. With the No. 1, the No. 0 Ball Bearing shutter is supplied. This has speeds of 1/25 and 1/50 second and time and bulb exposure actions, without cable release. With the No. 1A, the No. 1 Ball Bearing shutter is used, having speeds of 1/25, 1/50 and 1/100, with the time and bulb actions and supplied with cable release. The illustration shows the No. 1A size.

Both models are covered with genuine leather and carefully finished in every detail. They are very attractive in appearance and can be instantly focused for objects at any distance. Using the Premo Film Pack, they can be loaded and unloaded and films changed for successive exposures almost in less time than it takes to tell.

## SPECIFICATIONS

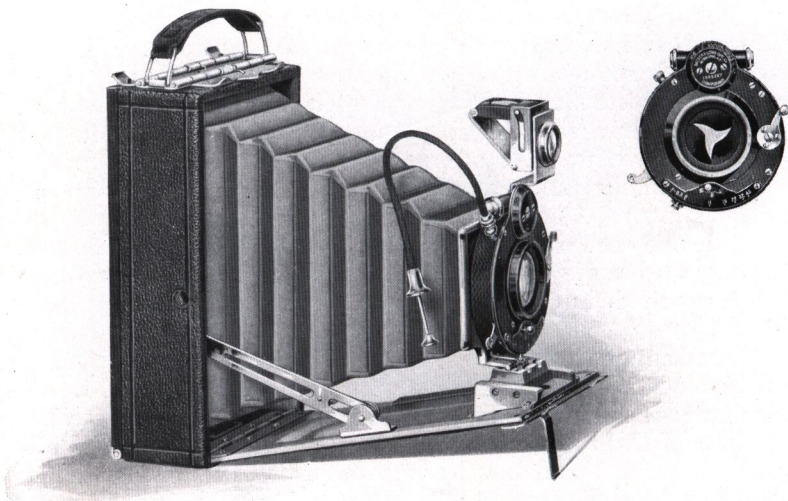
*Premoette Jr. No. 1.* Capacity: 12 film pack exposures without reloading. Dimensions: 1½ x 3 x 4¾ in. Weight: 12 ozs. Lens: Meniscus Achromatic. Shutter: Kodak Ball Bearing No. 0 (See page 5). Finder: collapsible, reversible, brilliant. Tripod Sockets: two.

*Premoette Jr. No. 1A.* Capacity: 12 film pack exposures without reloading. Dimensions: 1¾ x 3¼ x 5¾ in. Weight, 18 ozs. Lens: Meniscus Achromatic. Shutter: Kodak Ball Bearing (See page 5). Finder: brilliant, reversible, collapsible. Tripod Sockets, two.

## PRICES

	No. 1 2¼x3¼	No. 1A 2½x4¼
Premoette Jr. with Meniscus Achromatic Lens and Kodak Ball Bearing Shutter	\$ 5.00	\$ 7.00
Ditto, with Planatograph Lens	7.00	9.00
Ditto, with Kodak Anastigmat Lens, <i>f.</i> 7.7	12.00	14.00
Carrying Case	1.25	1.50
Premo Film Pack (12 exposures)	.40	.50
Kodak Portrait Attachment (See page 37)	.50	.50

# P R E M O E T T E J R . S P E C I A L



**I**N this camera is offered the light weight, the compactness and the simplicity of the regular Premoette Jr. combined with an especially rich finish and those capabilities for superior work assured by a high speed lens and shutter of the finest type.

The shutter works for time and bulb exposure actions and has graduated speeds of from 1 second to 1/300 second, with the No. 1 Special, and to 1/250 second with the No. 1A. With this shutter and the great speed of the lens, this camera will make satisfactory pictures under all conditions of amateur photography (excepting focal plane work) where pictures could possibly be made.

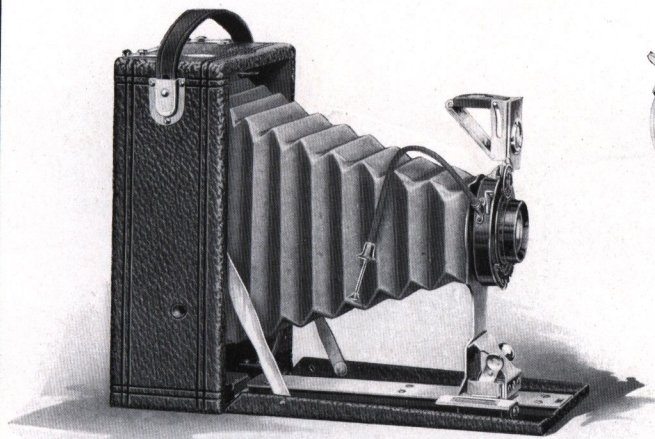
## S P E C I F I C A T I O N S

Capacity: 12  $2\frac{1}{4} \times 3\frac{1}{4}$  film pack exposures without reloading. Dimensions: No. 1,  $1\frac{1}{2} \times 3 \times 4\frac{3}{4}$  in.; No. 1A,  $1\frac{3}{4} \times 3\frac{1}{4} \times 5\frac{3}{4}$  in. Weight: No. 1, 13 ozs.; No. 1A, 19 ozs. Lens: Bausch & Lomb Kodak Anastigmat, *f.* 6.3. Shutter: Compound. Finder: brilliant, reversible, collapsible. Tripod Sockets: two.

## P R I C E S

	No. 1 $2\frac{1}{4} \times 3\frac{1}{4}$	No. 1A $2\frac{1}{2} \times 4\frac{1}{4}$
Premoette Jr. Special with Bausch & Lomb Kodak Anastigmat Lens, <i>f.</i> 6.3, and Compound Shutter (Formerly listed as Zeiss Kodak Anastigmat) . . . . .	\$36.00	\$40.00
Grain Leather Carrying Case . . . . .	1.75	2.00
Premo Film Pack (12 exposures) . . . . .	.40	.50
Kodak Portrait Attachment (See page 37) . . . . .	.50	.50

# F I L M P R E M O N o . 1



**T**HE Film Premos are convenient and easy of manipulation to the last degree. Using the Premo Film Pack, they load and unload in daylight almost instantaneously. The films are changed for successive exposures by merely pulling out successive film pack tabs, and the focusing and shutter operation of the camera are so simple as to be perfectly obvious.

Film Premos, like all film pack cameras, are moderate in price, very compact and light. They are made with careful attention to detail and covered with genuine grain leather.

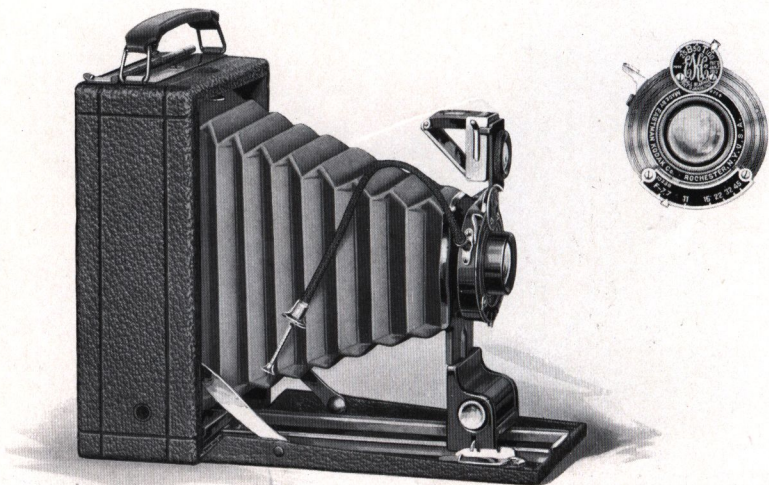
## SPECIFICATIONS

Capacity: 12 film exposures. Box: seasoned wood. Bed: aluminum. Dimensions:  $3\frac{1}{4} \times 4\frac{1}{4}$ ,  $2\frac{1}{4} \times 4 \times 5\frac{1}{2}$  in.; 3A ( $3\frac{1}{4} \times 5\frac{1}{2}$ ),  $2\frac{3}{8} \times 4\frac{5}{8} \times 7\frac{1}{8}$  in. Weight:  $3\frac{1}{4} \times 4\frac{1}{4}$ , 19 ozs.; 3A ( $3\frac{1}{4} \times 5\frac{1}{2}$ ), 29 ozs. Lens: Rapid Rectilinear. Shutter: Kodak Ball Bearing with cable release (See page 5). Tripod Sockets: two. Finder: reversible, brilliant, collapsible.

## PRICES

	$3\frac{1}{4} \times 4\frac{1}{4}$	3A $3\frac{1}{4} \times 5\frac{1}{2}$
Film Premo No. 1, with Rapid Rectilinear Lens and Kodak Ball Bearing Shutter . . . . .	\$10.00	\$12.50
Ditto, with Meniscus Achromatic Lens and Kodak Ball Bearing Shutter . . . . .	8.00	10.50
Sole Leather Carrying Case . . . . .	1.75	2.25
Premo Film Pack (12 exposures) . . . . .	.70	.80
Kodak Portrait Attachment (See page 37) . . . . .	.50	.50

# P R E M O E T T E   S E N I O R



**T**HE Premoette Sr. is designed to offer the amateur a compact, easily operated camera for the three larger standard sizes of amateur pictures at as low a price as is consistent with quality and dependable results.

It is a common sense camera without frills but with great efficiency, for the general run of amateur work. It is supplied with either R. R. lens or Kodak Anastigmat, *f.* 7.7, being especially recommended with the anastigmat. This lens, for definition and covering power, is the equal of any anastigmat made, and has a higher speed than any R. R. lens. Thus in getting this camera the amateur assures himself not only of the microscopic definition of the finest anastigmat, but also of a greater speed than is possible with the ordinarily equipped camera. And when it is considered that a perfectly reliable  $2\frac{1}{2} \times 4\frac{1}{4}$  or  $3\frac{1}{4} \times 4\frac{1}{4}$  camera with these advantages can be bought for \$15.00, and a  $3\frac{1}{4} \times 5\frac{1}{2}$  (post card) camera for \$17.50, the desirability of this model for the amateur photographer can hardly be over-estimated.

The Premoette Sr. is carefully made in every detail. The idea has been to keep the camera as simple in operation as possible,

# P R E M O E T T E S E N I O R

to avoid all special adjustments or features which were not essential to the making of first-class pictures under average conditions of amateur photography. This camera makes no pretensions to cover the field of the specialist, but it is a camera which will give the best of satisfaction to those who wish to make good, clear, sharp, every-day pictures of the persons and things they are interested in.

This idea has not only enabled us to keep the price of the camera low, but also to offer a camera which, in compactness, light weight, ease of operating and all-around simplicity, has a considerable margin over the average type of camera.

The Premoette Sr. can be loaded in an instant in any light. Just open back of camera, drop in Premo Film Pack, close back and it's done. To change films for successive exposures, just pull out successive film pack tabs.

The lens support, or standard, is exceptionally rigid, and is operated along the runways by means of an automatic clamp, making it an easy matter to draw the lens out to the focusing scale, where an automatic focusing lock provides for the instant focusing of objects at any distance.

They are covered with genuine leather of selected grain, metal parts are finished in nickel and black lacquer, and they are cameras which the merest beginner can successfully use. When fitted with Kodak Portrait Attachment this camera is excellent for home portraiture.

## SPECIFICATIONS

Capacity: 12 exposures. Box: seasoned wood. Bed and back: aluminum. Dimensions:  $2\frac{1}{2} \times 4\frac{1}{4}$ ,  $1\frac{1}{8} \times 3\frac{5}{8} \times 5\frac{5}{8}$  in.; 3A,  $3\frac{1}{4} \times 5\frac{1}{2}$ ,  $2\frac{1}{4} \times 4\frac{1}{2} \times 7\frac{1}{8}$  in. Weight:  $2\frac{1}{2} \times 4\frac{1}{4}$ , 21 ozs.; 3A,  $3\frac{1}{4} \times 5\frac{1}{2}$ , 35 ozs. Lens: Kodak Anastigmat, *f.* 7.7. Shutter, Kodak Ball Bearing, with cable release (See page 5). Tripod Sockets: two. Finder: reversible, brilliant, collapsible. Automatic standard clamp. Automatic focusing lock.

## PRICES

	$2\frac{1}{2} \times 4\frac{1}{4}$	$3\frac{1}{4} \times 4\frac{1}{4}$	3A $3\frac{1}{4} \times 5\frac{1}{2}$
Premoette Sr. with R. R. lens and Kodak Ball Bearing Shutter . . . . .	\$10.00	\$10.00	\$12.50
Ditto, with Kodak Anastigmat Lens, <i>f.</i> 7.7 . . . . .	15.00	15.00	17.50
Sole Leather Carrying Case . . . . .	1.75	1.75	2.25
Premo Film Pack (12 exposures) . . . . .	.50	.70	.80
Kodak Portrait Attachment (See page 37) . . . . .	.50	.50	.50

## CARTRIDGE PREMO No. 00



**T**HIS little camera not only introduces to the public a line of Cartridge Premo cameras, but it also introduces a new size picture— $1\frac{1}{4} \times 1\frac{3}{4}$  inches—and a new price standard for a dependable camera.

It is made primarily as a camera for the children. Photography is an excellent recreation for the little folks. There is not only the fun which every boy and girl naturally will take in making pictures of their games, companions, and the like, but it helps to develop young minds unconsciously to an appreciation of true art.

This camera is fitted with automatic shutter and first quality meniscus lens carefully tested. V shape lines on the top and sides indicate the scope of the view, and the camera is covered with a lasting quality of imitation leather. It loads with a special 6-exposure film cartridge, and while this is not N. C. film, it is of standard Eastman quality.

While designed especially for the children, and so simple that any boy or girl can operate it, this camera is in no sense a toy but will make satisfactory pictures for a person of any age.

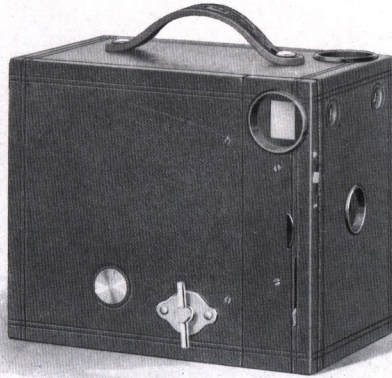
### SPECIFICATIONS

For rectangular pictures  $1\frac{1}{4} \times 1\frac{3}{4}$  inches. Capacity: 6 exposures without reloading. Size of camera:  $2 \times 2\frac{5}{8} \times 3\frac{1}{8}$  in. Lens: Meniscus,  $\frac{2}{4}$ -inch focus. Shutter: Automatic for time and snap shot exposures.

### PRICES

Cartridge Premo No. 00, Meniscus Lens and Automatic Shutter	\$0.75
Eastman Film Cartridge, 6 exposures, No. 35	.10

## CARTRIDGE PREMOS Nos. 2 AND 2A



THESE are cameras of the fixed focus type, requiring no focusing or estimating of distances. They take regular Eastman N. C. film cartridges, which may be loaded, unloaded and developed in full daylight, and will appeal especially to those who wish to make pictures on roll film in the easiest way and at the minimum of expense.

The cameras are equipped with automatic shutters, working for time or "snap shot" exposures, two finders and tested lenses. They are covered with serviceable imitation leather and will make negatives of a quality that yields good enlargements up to any reasonable size.

### SPECIFICATIONS

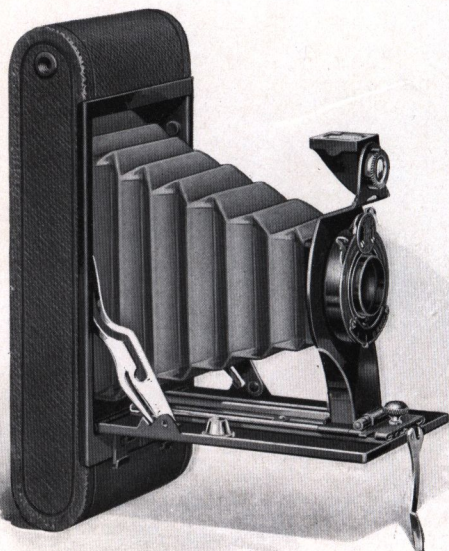
For rectangular pictures, No. 2,  $2\frac{1}{4} \times 3\frac{1}{4}$  in.; No. 2A,  $2\frac{1}{2} \times 4\frac{1}{4}$  in. Capacity: No. 2, 6 exposures without reloading; No. 2A, 12 exposures without reloading. Size of camera: No. 2,  $5\frac{3}{8} \times 4 \times 3\frac{1}{4}$  in.; No. 2A,  $3\frac{1}{8} \times 5\frac{1}{8} \times 6\frac{1}{8}$  in. Weight: No. 2, 13 ozs.; No. 2A, 21 ozs. Lens: No. 2, Meniscus; No. 2A, Meniscus Achromatic. Shutter: Eastman Rotary, with three stops. Two finders.

### PRICES

	No. 2	No. 2A
No. 2 Cartridge Premo, Meniscus Lens, Eastman Rotary Shutter	\$2.00	
No. 2A Cartridge Premo, Meniscus Achromatic Lens, Eastman Rotary Shutter		\$3.00
Carrying Case, with shoulder strap	.85	.85
N. C. Film Cartridge, 12 exposures (No. 116)		.50
Ditto, 6 exposures (No. 120 for No. 2; No. 116 for No. 2A)	.20	.25
Kodak Portrait Attachment (See page 37)	.50	.50



## FOLDING CARTRIDGE PREMOS Nos. 2 AND 2A



**T**HESE are very compact little roll film cameras with rounded ends, graceful in all their lines, and slipping readily into the pocket.

Alike in general appearance and operation, they differ in the size of the pictures they make and slightly in lens and shutter equipment. The No. 2 makes  $2\frac{1}{4} \times 3\frac{1}{4}$  pictures, the No. 2A is for the popular  $2\frac{1}{2} \times 4\frac{1}{4}$  size. The No. 2 is regularly fitted with a meniscus lens and the No. 0 Kodak Ball Bearing shutter. This shutter has time and bulb exposure actions and instantaneous speeds of  $1/25$  and  $1/50$  second. The No. 2A is regularly fitted with a meniscus achromatic lens and the No. 1 Kodak Ball Bearing shutter without cable release. This shutter has the same actions and speeds of the No. 0 and in addition, the faster speed of  $1/100$  second. Both cameras are offered also with R. R. lens.

These Premos load with regular Eastman N. C. film. They are constructed on a new and very simple principle for loading and unloading in daylight, and as the film may be developed in the

## FOLDING CARTRIDGE PREMOS NOS. 2 AND 2A

Kodak Film Tank, no dark room is necessary for any step in the photographic process.

In making these cameras the aim has been to produce as simple, easily workable roll film cameras as can be made. There is no complicated mechanism or adjustment, just a plain camera for every-day work, properly equipped for amateur picture-making under all ordinary conditions where the average amateur would care to use a camera.

Each camera has reversible finder, two tripod sockets, strap handle and automatic focusing lock. They are neatly and carefully finished and covered with a serviceable, attractive grade of imitation leather.

The proportions of the pictures made by these cameras lend themselves especially well to portraiture, and when fitted with Kodak Portrait Attachment, either camera can be operated close up to the subject for home portraits of excellent quality.

The negatives made by these cameras are of the quality to yield good enlargements. Any amateur can easily make enlargements from his favorite negatives by use of the Brownie Enlarging camera described on page 36.

### SPECIFICATIONS

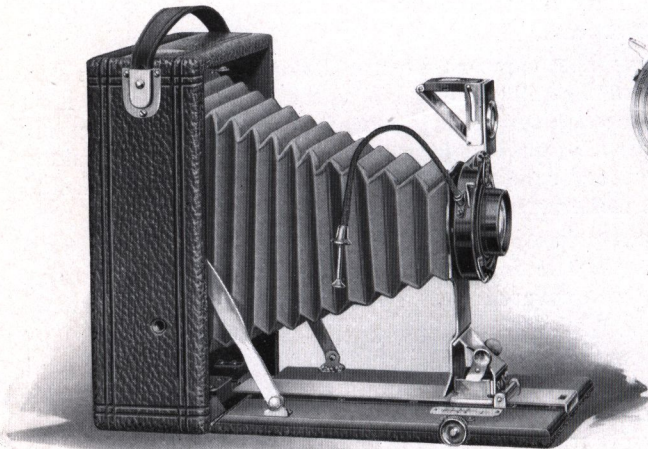
*No. 2:* For rectangular pictures,  $2\frac{1}{4} \times 3\frac{3}{4}$  in. Capacity: 6 exposures without reloading. Size of camera:  $1\frac{1}{4} \times 3\frac{1}{8} \times 6\frac{1}{2}$  in. Weight: 10 ozs. Lens: Meniscus Achromatic,  $3\frac{1}{2}$ -inch focus. Also supplied with Rapid Rectilinear Lens, if desired. Shutter: Kodak Ball Bearing. Reversible finder, two tripod sockets, automatic focusing lock, black leather bellows.

*No. 2A:* For rectangular pictures,  $2\frac{1}{2} \times 4\frac{1}{4}$  in. Capacity: 12 exposures without reloading. Size of camera:  $1\frac{1}{8} \times 3\frac{3}{8} \times 7\frac{7}{8}$  in. Weight: 25 ozs. Lens: Meniscus Achromatic,  $4\frac{1}{4}$ -inch focus. Also supplied with Rapid Rectilinear Lens if desired. Shutter: Kodak Ball Bearing (See page 5). Reversible finder, two tripod sockets, automatic focusing lock, black leather bellows.

### PRICES

	No. 2	No. 2A
Folding Cartridge Premo with single lens and Kodak Ball Bearing Shutter	\$5.00	\$7.00
Ditto, with R. R. Lens	6.50	9.00
Cartridge Premo Carrying Case	1.00	1.10
N. C. Film Cartridge, 12 exposures (No. 116)		.50
Ditto, 6 exposures (No. 120 for No. 2, No. 116 for No. 2A)	.20	.25
Kodak Portrait Attachment (See page 37)	.50	.50

# P O C K E T P R E M O C



**I**N this camera are offered the daylight loading feature and all the other conveniences of films, together with the ground glass focusing feature of the plate camera. It uses films or plates with equal facility, and the ground glass may be used for focusing before each exposure just as well *when using films* as when using plates. The camera is also equipped with an accurate focusing scale, so that it may be focused by scale if desired, and with these advantages is as light and compact as is the average camera for films only.

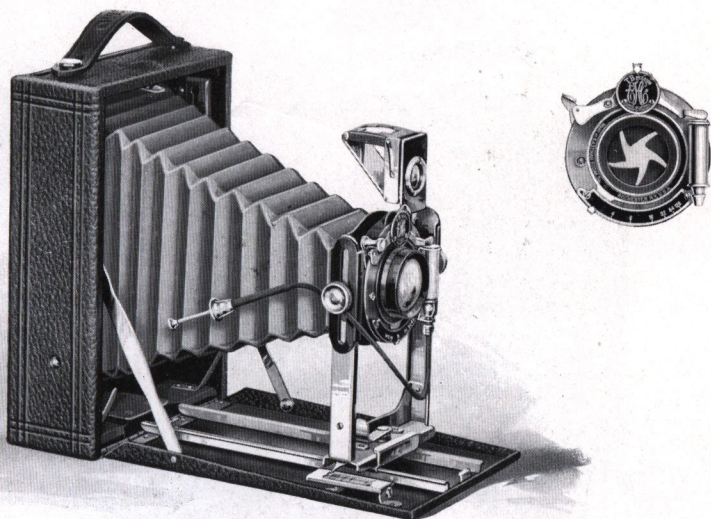
## SPECIFICATIONS

Capacity: 12 film or 2 plate exposures. Size of picture:  $3\frac{1}{4} \times 5\frac{1}{2}$ . Box: mahogany. Bed: mahogany, with rack and pinion for focusing. Finder: reversible, collapsible, brilliant. Tripod Sockets: two. Lens: Planatograph. Shutter: Kodak Ball Bearing, with cable release (See page 5). Dimensions:  $2\frac{1}{4} \times 5 \times 7\frac{1}{8}$  in. Weight: 32 ozs. Automatic Standard Clamp.

## PRICES

	3A $3\frac{1}{4} \times 5\frac{1}{2}$
Pocket Premo C with Planatograph Lens, Kodak Ball Bearing	
Shutter and Plate Holder	\$15.00
Ditto, with Kodak Anastigmat Lens, <i>f. 7.7</i>	20.00
Double Plate Holder	1.00
Sole Leather Carrying Case	2.25
Premo Film Pack Adapter	1.50
Premo Film Pack (12 exposures)	.80
Kodak Portrait Attachment (See page 37)	.50

# P R E M O N U M B E R 8



**D**ESIGNED for the amateur who wants a convenient, dependable plate camera at a moderate price, the Premo No. 8 is so carefully made and so simple to operate that it will produce remarkably good results. While made primarily as a plate camera, by use of the Premo Film Pack Adapter the camera can be at any time converted into a daylight loading film camera.

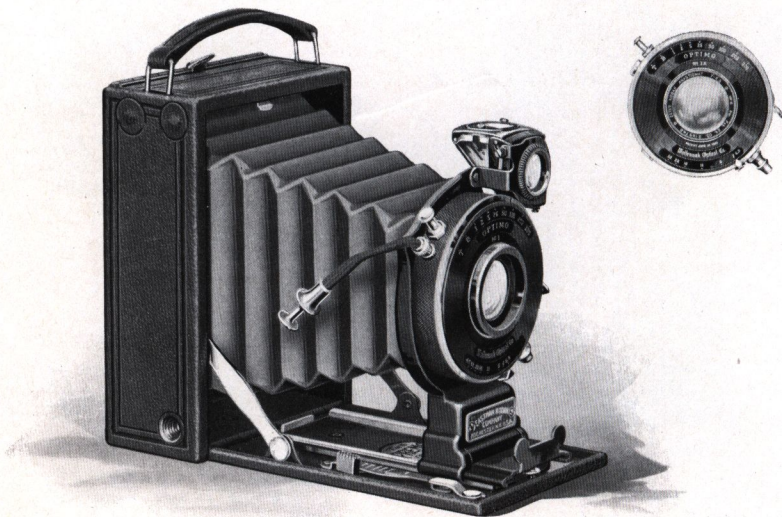
## SPECIFICATIONS

Capacity: 12 film or 2 plate exposures. Box: kiln-dried wood, covered with leather. Standard: made of metal, with rising and falling front. Carrying Case: imitation leather, with compartments for holders. Finder: reversible, brilliant, collapsible. Tripod Sockets: two. Lens: Planatograph. Shutter: Kodak Ball Bearing with cable release (See page 5). Dimensions:  $3\frac{1}{4} \times 5\frac{1}{2}$ ,  $2 \times 5 \times 7\frac{1}{4}$  in.;  $4 \times 5$ ,  $2 \times 5\frac{1}{4} \times 6\frac{1}{2}$  in.;  $5 \times 7$ ,  $2\frac{1}{4} \times 6\frac{1}{2} \times 8\frac{1}{2}$  in. Weight:  $3\frac{1}{4} \times 5\frac{1}{2}$ , 34 ozs.;  $4 \times 5$ , 30 ozs.;  $5 \times 7$ , 42 ozs.

## PRICES

	4x5	3A $3\frac{1}{4} \times 5\frac{1}{2}$	5x7
Premo No. 8, with Planatograph Lens, Kodak Ball Bearing Shutter, Carrying Case and Plate Holder . . . . .	\$12.00	\$14.00	\$18.00
Ditto, with Kodak Anastigmat Lens, <i>f.</i> 7.7 . . . . .		19.00	
Premo Film Pack Adapter . . . . .	1.50	1.50	2.50
Premo Film Pack (12 exposures) . . . . .	.90	.80	1.60
Kodak Portrait Attachment (See page 37) . . . . .	.50	.50	.50

P R E M O N U M B E R 1 2



**I**N the last few years the trend of amateur preference has been toward the very small, compact camera with anastigmat lens. This is a natural enough condition, for the smaller the camera, of course, the more convenient for carrying, and when a camera for comparatively small size pictures is suitably equipped, pictures of any size can be easily obtained from the negatives by the simple process of enlargement. The Premo No. 12 has been specially designed as a camera to meet such requirements with the highest possible degree of efficiency.

It makes  $2\frac{1}{4} \times 3\frac{1}{4}$  pictures. It takes films or plates with equal facility, it has a ground glass for accurate focusing and composition, or it may, of course, be used with focusing scale without reference to the ground glass. It has two tripod sockets, reversible brilliant finder with revolving mask, and special focusing lever, making it a very simple matter to set the lens in correct focus for objects at any distance.

The camera is regularly fitted with Optimo shutter, attaining a maximum speed of  $1/300$  second, and Bausch & Lomb Kodak Anastigmat lens, *f.* 6.3. It can also be supplied with other *f.* 6.3

# P R E M O N U M B E R 1 2

lenses as listed, and for those who want exceptional speed, with the B. & L. Tessar Ic lens working at the full aperture of *f.* 4.5.

With such anastigmat equipments and high speed shutter, there is no condition of amateur photography, aside from focal plane work, in which this camera will not make good pictures where pictures could possibly be obtained. In poor lights and under general adverse conditions, this camera will make snap shots where time exposures would be necessary with the ordinarily equipped camera, although there are of course limits beyond which *no camera* can go in such work.

Realizing that there are many who want cameras of this type but without the high speed anastigmat lenses, we also offer it equipped with Kodak Ball Bearing shutter and Kodak Anastigmat lens, *f.* 7.7, or with Rapid Rectilinear lens. With these equipments, considering the camera's all-around convenience and capabilities, the prices are extremely moderate.

And with all its advantages it is small and light. The camera can be carried in a boy's pocket or a lady's hand-bag. It is simple to operate, most attractive in appearance. It is covered with the finest quality grain leather, handsomely embossed and finished in nickel and black enamel.

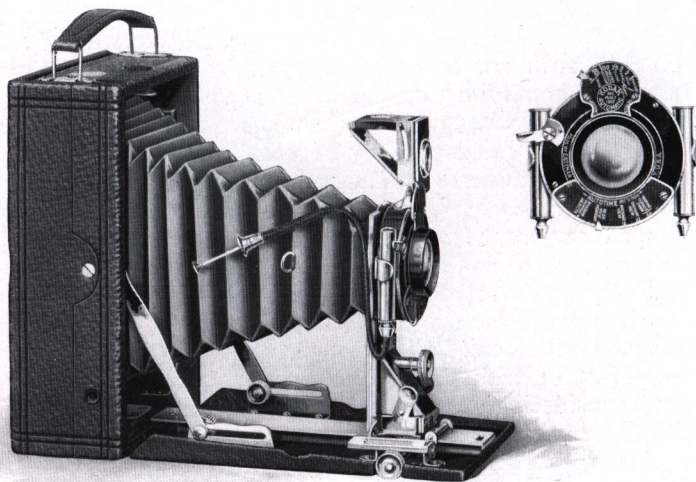
## SPECIFICATIONS

Size of picture:  $2\frac{1}{4} \times 3\frac{3}{4}$ . Capacity: 12 film or one plate exposure. Box: aluminum. Bed: aluminum, with special lever focusing device. Finder: reversible, with revolving mask. Tripod sockets: two. Lens: Bausch & Lomb Kodak Anastigmat, *f.* 6.3, or other lenses as per price list. Shutter: Optimo or Kodak Ball Bearing as per price list. Dimensions:  $1\frac{5}{8} \times 3\frac{3}{4} \times 4\frac{5}{8}$  in. Weight: 24 ozs.

## PRICES

	$2\frac{1}{4} \times 3\frac{3}{4}$
Premo No. 12 with Optimo Shutter and Bausch & Lomb Kodak Anastigmat Lens, <i>f.</i> 6.3 (Formerly listed as Zeiss Kodak Anastigmat), including Film Pack Adapter and one Plate Holder	\$45.00
Ditto, with Bausch & Lomb Special Anastigmat Lens, <i>f.</i> 6.3 (Formerly listed as B. & L. Anastigmat)	36.00
Ditto, with Kodak Anastigmat Lens, <i>f.</i> 6.3	40.00
Ditto, with Bausch & Lomb Tessar, Ser. 11b Lens, <i>f.</i> 6.3 (Formerly listed as B. & L. Zeiss Tessar)	54.00
Ditto, with Bausch & Lomb Tessar, Ser. Ic Lens, <i>f.</i> 4.5 (Formerly listed as B. & L. Zeiss Tessar)	56.00
Ditto, with Kodak Ball Bearing Shutter and R. R. Lens	15.00
Ditto, with Kodak Anastigmat Lens, <i>f.</i> 7.7	20.00
Carrying Case, grain leather, velvet lined	2.75
Single Plate Holder, each	.50
Premo Film Pack, 12 exposures	.40

# F I L M P L A T E P R E M O



**T**HE underlying idea of this model is to supply a camera equipped for the most serious work in as compact and convenient form as possible. Like the Pocket Premo C, the Filmplate Premo takes films or plates with equal facility and offers the ground glass focusing advantage with either. In addition it has rising and sliding front, swing bed and Kodak Automatic shutter.

With these advantages there is nothing bulky or cumbersome about the Filmplate Premo. It is as compact, as easily carried and operated as the average camera for films alone.

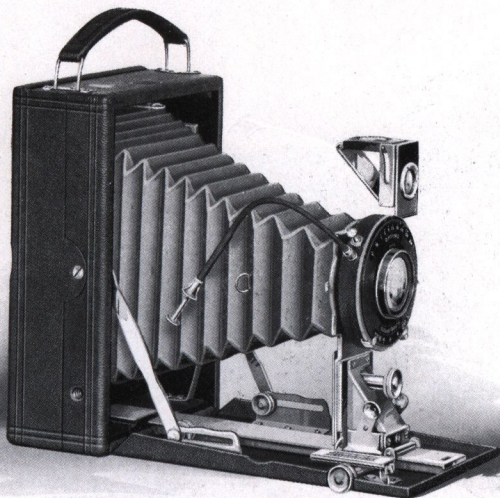
## SPECIFICATIONS

Capacity: 12 film or 2 plate exposures. Box: cherry. Bed: aluminum. Rack and pinion for fine focusing. Front: rising and sliding. Finder: reversible, brilliant, collapsible. Tripod Sockets: two. Lens, Planatograph. Shutter: Kodak Automatic (See page 5). Dimensions:  $3\frac{1}{4} \times 4\frac{1}{4}$ ,  $2\frac{1}{4} \times 4\frac{7}{8} \times 5\frac{3}{8}$  in.; 3A ( $3\frac{1}{4} \times 5\frac{1}{2}$ ),  $2\frac{7}{8} \times 4\frac{3}{4} \times 7\frac{7}{8}$  in. Weight:  $3\frac{1}{4} \times 4\frac{1}{4}$ , 30 ozs.; 3A ( $3\frac{1}{4} \times 5\frac{1}{2}$ ), 37 ozs. Automatic Standard Clamp.

## PRICES

	$3\frac{1}{4} \times 4\frac{1}{4}$	3A $3\frac{1}{4} \times 5\frac{1}{2}$
Filmplate Premo with Planatograph Lens, Kodak Auto. Shutter, Plate Holder and Film Pack Adapter . . . . .	\$22.50	\$25.00
Carrying Case . . . . .	2.00	2.50
Premo Film Pack . . . . .	.70	.80
Kodak Portrait Attachment (See page 37) . . . . .	.50	.50

# FILMPLATE PREMO SPECIAL



**F**ITTED with every desirable mechanical convenience, taking films or plates with equal facility and offering the advantage of ground glass focusing, this is, indeed, an ideal camera for those who are looking for the limit of efficiency in a compact, light weight hand camera. It will make pictures under adverse conditions which the ordinary camera could not meet. Covered with genuine Morocco it is a camera of exceptionally rich appearance.

## SPECIFICATIONS

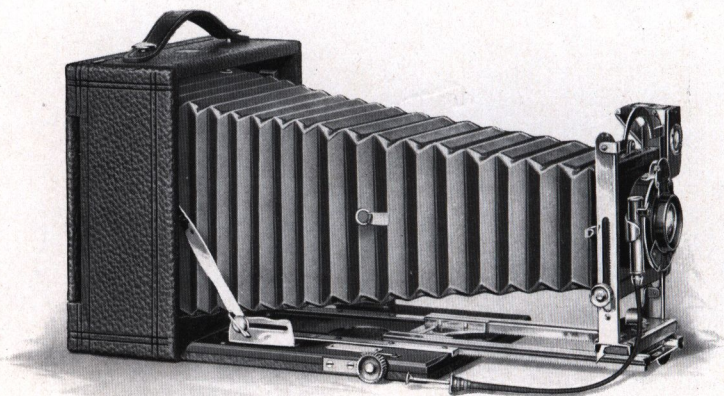
Capacity: 12 film or 2 plate exposures. Box: seasoned wood. Bed: aluminum. Rack and pinion for fine focusing. Front: rising and sliding. Finder: brilliant, reversible, collapsible. Tripod Sockets: two. Lens: Bausch & Lomb Kodak Anastigmat, *f.* 6.3. Shutter: Optimo (See page 5). Dimensions:  $3\frac{1}{4} \times \frac{1}{4}$ ,  $2\frac{1}{4} \times 4\frac{1}{8} \times 5\frac{3}{8}$  in.;  $3\frac{1}{4} \times 5\frac{1}{2}$ ,  $2\frac{1}{8} \times 4\frac{1}{8} \times 7\frac{1}{8}$  in. Weight:  $3\frac{1}{4} \times 4\frac{1}{4}$ , 26 ozs.;  $3\frac{1}{4} \times 5\frac{1}{2}$ , 36 ozs.

## PRICES

	$3\frac{1}{4} \times 4\frac{1}{4}$	$3\frac{1}{4} \times 5\frac{1}{2}$ <sup>3A</sup>
Filmplate Premo Special with Bausch & Lomb Kodak Anastigmat Lens, <i>f.</i> 6.3, and Optimo Shutter, Film Pack Adapter and Plate Holder (Lens formerly listed as Zeiss Kodak Anastigmat)	\$50.00	\$60.00
Ditto, Kodak Anastigmat Lens, <i>f.</i> 6.3	45.00	50.00
Ditto, Bausch & Lomb Tessar, Ser. IIb Lens, <i>f.</i> 6.3 (Formerly listed as B. & L. Zeiss Tessar)	60.00	71.00
Case, Velvet Lined	3.00	3.25
Premo Film Pack	.70	.80



P R E M O N U M B E R 9



**T**HIS efficient camera is designed for the amateur who wishes an instrument of very wide scope. With its complete equipment and accurate, convenient mechanical adjustments, it is a camera never before approached at the price.

The Premo No. 9 is fitted with the new Premo reversible back. This is the simplest back to reverse ever offered, for with its patented spring lug construction, it may be instantly removed and reversed without any tendency to stick or bind.

The bellows is of black leather and has sufficient draw to permit the use of the single lens combination or a telephoto attachment of several magnifications. The extension plate is actuated by rack and pinion working with exceptional smoothness and provided with a simple locking device.

The standard is constructed of metal, is very rigid, and incorporates a rising and falling front of great latitude. This in connection with the swing bed construction makes it an easy matter to take pictures of tall buildings, and the like, without tipping the camera, with its attendant distortion of the picture. The lens board is removable and the finder is the new Premo collapsible brilliant.

The instrument is of the most substantial construction, all working parts operate with mechanical precision and it is finished

# P R E M O N U M B E R 9

in the most careful manner. The covering is of black leather, specially selected for its beautiful grain, the bed is finished in black and the metal parts are heavily nicked.

The regular lens and shutter equipment comprises the Kodak Automatic shutter and the Planatograph lens—a perfectly satisfactory equipment for everyday amateur photography. The single combination of the lens will produce sharp, clear pictures of distant objects, double the size of those made with the complete lens.

In the 3A and 4 x 5 sizes the camera is offered, at a slight increase in price, fitted with the new Kodak Anastigmat lens, *f.* 7.7. For those who wish an Anastigmat of even greater speed it is supplied with the new Kodak Anastigmat lens working at *f.* 6.3 and the Optimo shutter with cable release. There is also a choice of several other high speed Anastigmat fittings.

Like all Premo plate cameras the Premo No. 9 takes films or plates with equal facility.

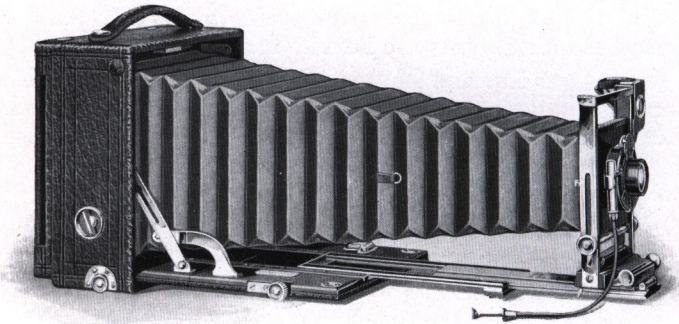
## SPECIFICATIONS

Capacity: 12 film or 2 plate exposures. Box: kiln-dried wood, covered with fine grain leather. Bed: hand polished wood, finished in black, and supplied with rack and pinion for fine focusing, and swing arrangement. Back: spring catch, reversible. Standard: made of metal, with rising and falling front. Finder: brilliant, reversible, collapsible. Tripod Socket: one. Lens: Planatograph. Shutter: Kodak Automatic (See page 5). Carrying Case: sole leather, with compartments for holders. Bellows: black leather; draw,  $3\frac{1}{4} \times 5\frac{1}{2}$ , 13 in.; 4 x 5, 13 in.; 5 x 7,  $15\frac{1}{4}$  in. Dimensions:  $3\frac{1}{4} \times 5\frac{1}{2}$ , 3 x 7 x 7 in.; 4 x 5, 3 x 7 x 7 in.; 5 x 7,  $2\frac{7}{8} \times 8\frac{1}{4} \times 8\frac{1}{4}$  in. Weight:  $3\frac{1}{4} \times 5\frac{1}{2}$ , 63 ozs.; 4 x 5, 63 ozs.; 5 x 7, 76 ozs.

## PRICES

	4x5	3A $3\frac{1}{4} \times 5\frac{1}{2}$	5x7
Premo No. 9, with Planatograph Lens, Kodak Automatic Shutter, Case and Holder . . . . .	\$28.00	\$28.00	\$33.00
Ditto, with Kodak Anastigmat Lens, <i>f.</i> 7.7 . . . . .	33.00	33.00	
Ditto, with Kodak Anastigmat Lens, <i>f.</i> 6.3, and Optimo Shutter . . . . .	56.00	56.00	
Ditto, with Bausch & Lomb Kodak Anastigmat Lens, <i>f.</i> 6.3, and Compound Shutter (Formerly listed as Zeiss Kodak Anastigmat) . . . . .	62.50	62.50	81.50
Premo Film Pack Adapter . . . . .	1.50	1.50	2.50
Premo Film Pack (12 exposures) . . . . .	.90	.80	1.60
Kodak Portrait Attachment (See page 37) . . . . .	.50	.50	.50

# P R E M O N U M B E R 1 0



**D**ESIGNED to meet the requirements of the most advanced amateur and of the specialist, the Premo No. 10 is equipped with every known adjustment desirable in a hand camera. It has triple extension, long bellows draw for telephoto work and copying, drop bed for wide angle use, rising and falling front, swing bed and reversible back.

It takes films or plates with equal facility, is simple in all its parts and is finished in exceptionally handsome style.

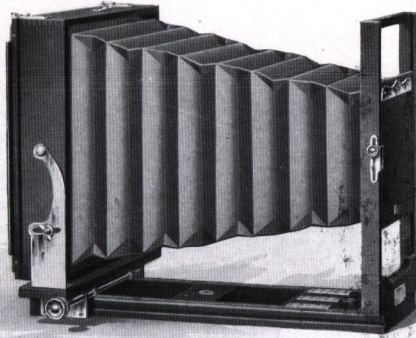
## SPECIFICATIONS

Capacity: 12 film or 2 plate exposures. Box: mahogany, leather covered. Bed: mahogany, with highly polished black finish and with triple extension runway. Back: spring catch, reversible. Swing: vertical; rack and pinion actuated, with locking device. Front: rising and falling rack and pinion actuated with locking device. Lens Board: removable; size  $3\frac{1}{2} \times 3\frac{1}{2}$  in. Finder: Brilliant, reversible. Tripod Sockets: two. Lens: Planatograph. Shutter: Kodak Automatic (See page 5). Carrying Case: sole leather, plush lined, with compartment for holders. Bellows: black leather; draw, 19 in. Dimensions:  $4 \times 8\frac{1}{2} \times 8\frac{1}{2}$  in. Weight:  $5\frac{1}{2}$  lbs. Automatic Standard Clamp.

## PRICES

Premo No. 10, with Planatograph Lens and Kodak Auto. Shutter, Carrying Case and Plate Holder	5x7 \$ 60.00
Ditto, with Bausch & Lomb Kodak Anastigmat Lens, <i>f.</i> 6.3 and Optimo Shutter (Formerly listed as Zeiss Kodak Anastigmat)	109.00
Ditto, with Bausch & Lomb Protar VIIa Lens, <i>f.</i> 7 (Formerly listed as B. & L. Zeiss Protar)	141.00
Premo Film Pack Adapter	2.50
Premo Film Pack	1.60

# T H E R . O . C . V I E W



**A**N inexpensive, reliable view camera for those who do not require extra long bellows capacity. It is especially adapted for interior work as it focuses from the rear only, and the back may be moved as close to the front as desired so that extreme wide angle lenses may be used.

The front board is so wide that stereoscopic lenses may be used, and the standard is strong and rigid, affording a safe support for the heaviest lenses. Vertical and horizontal swings, rising and falling front and reversible back are provided. The camera is strongly built for service and will last indefinitely.

The price includes case and either plate holder or film holder for Eastman Portrait films. The plate holder will be supplied unless otherwise specified.

## SPECIFICATIONS

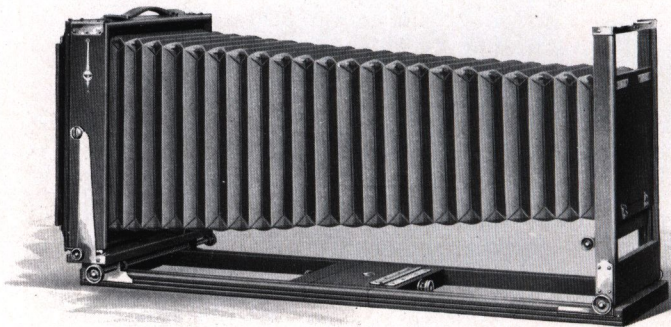
Bellows: draw, 5 x 7, 14 in.; 6½ x 8½, 15½ in.; 8 x 10, 17 in. Weight: 5 x 7, 4¾ lbs.; 6½ x 8½, 6 lbs.; 8 x 10, 6¾ lbs. Size of Lens Board: 5 x 7, 3¾ x 6¾ in.; 6½ x 8½, 4½ x 6½ in.; 8 x 10, 5 x 6 in. Carrying Case, square style canvas.

## PRICES

	5x7	6½x8½	8x10
R. O. C. View with Case and Holder . . .	\$13.00	\$14.50	\$16.00
R. O. C. View Complete Outfit* . . .	28.00	36.50	44.00
Extra Carrying Case, Regular . . .	1.75	2.00	2.25
R. O. C. Plate Holders . . .	1.00	1.10	1.25
Eastman Portrait Film Holders . . .	1.00	1.10	1.25

\*R. O. C. Complete Outfit includes: R. O. C. View Camera, Symmetrical Lens and D. V. Auto Shutter, six Plate Holders, Combination Tripod, Focusing Cloth, and Carrying Case holding complete outfit.

EASTMAN VIEW No. 1  
IMPROVED MODEL OF EMPIRE STATE



AS an inexpensive view camera, suitably equipped for all-around commercial work, the Eastman View No. 1 is without question the best value ever offered.

The camera is made of best quality cherry with mahogany finish. Metal parts are of polished brass, and corners are dove-tailed and reinforced by metal angle pieces.

It has no complications, but is built for practical service, and its various adjustments are such as to work conveniently and easily.

It has double extensions and both front and back are actuated by rack and pinion, so that the camera may be focused from either end, and the back can be racked up as close to the front as desired. This provides for the use of lenses of the widest angle. The camera has rising and falling front, actuated by rack and pinion, and this can be locked solidly at any point by merely pushing in the pinion. The front board is removable and is large enough to accommodate any lens.

Both horizontal and vertical swings are provided, and the back is reversible and furnished with a vertical cut-off board, so that two negatives may be made on one plate, if desired.

A strap handle and plumb level are supplied and an automatic bellows support which prevents sagging of the bellows at all times.

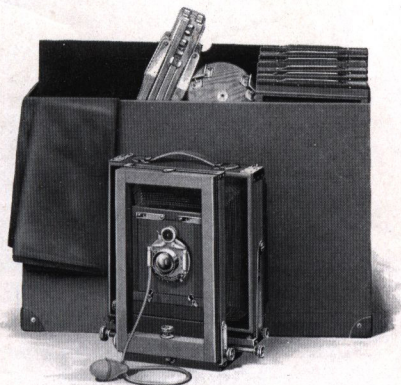
The price includes one double plate holder and canvas carrying case. This case is of the combination style, with three compartments in the bottom; one for the camera, one for plate holders

# EASTMAN VIEW No. 1 IMPROVED MODEL OF EMPIRE STATE

and the other for focusing cloth, lenses or other accessories. On top of these is an extra compartment for carrying the tripod.

The case is strongly made, with corners reinforced, and full length straps of the best leather.

The popularity of Eastman Portrait films for home portraiture commercial work leads us to list this camera with either film or plate holder. The price includes case and one holder, either film or plate. Unless specified we will furnish plate holder.



For those who want larger size view cameras we will furnish the regular Empire State model in the 11 x 14 size with carrying case and one plate holder for \$45.00.

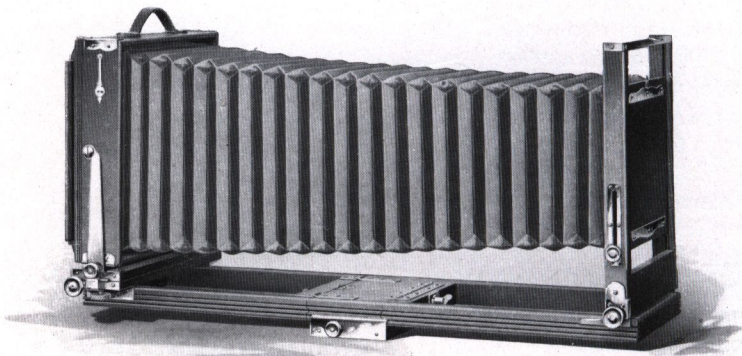
## SPECIFICATIONS

Bellows: draw, 5 x 7, 22½ in.; 6½ x 8½, 26 in.; 8 x 10, 29 in. Weight: 5 x 7, 6 lbs.; 6½ x 8½, 8 lbs.; 8 x 10, 9½ lbs. Size of Lens Board: 5 x 7, 4¼ x 4¼ in.; 6½ x 8½, 4¾ x 4¾ in.; 8 x 10, 4¾ x 4¾ in. Carrying Case, long style canvas, combination style, with compartment for camera, holders and tripod.

	5x7	6½x8½	8x10
Eastman View No. 1 (improved model of Empire State) with Case and Holder . . .	\$20.00	\$22.00	\$24.00
Eastman View No. 1 Complete Outfit* . . .	35.00	44.00	52.00
Complete Outfit as above, but with Rapid Rectigraphic instead of Symmetrical Lens . . .	46.00	56.00	66.00
Extra Carrying Case . . . . .	3.50	3.75	4.00
Extra Lens Board . . . . .	.30	.40	.50
Universal Plate Holders . . . . .	1.00	1.10	1.25
Eastman Portrait Film Holders . . . . .	1.00	1.10	1.25

\*Eastman View No. 1 Complete Outfit includes: Eastman View No. 1 Camera, Symmetrical Lens, Double Valve Auto. Shutter, six Plate Holders, Combination Tripod, Focusing Cloth, and Case to hold complete outfit.

EASTMAN VIEW No. 2  
IMPROVED MODEL OF EMPIRE STATE



**A**LL our experience in view camera making, all the information that we have been able to collect, of the needs of the view camera worker, have been put into the proposition of providing in this model a view camera as near to perfection as human ingenuity can devise.

It has all the good points of the famous old Empire State, with important additional features which leave nothing to be desired in view camera work, however exacting it may be.

The camera is constructed with the idea of providing the greatest possible solidity and strength throughout. The extensions are extra thick, the standard is very large and will furnish an absolutely rigid support for the heaviest lenses. Corners are dovetailed and reinforced by brass angle pieces, and the metal parts are all made of the best quality of brass, fully lacquered.

The front board is removable and very large. The rising and falling front is actuated by rack and pinion. The camera has both vertical and horizontal swing and can be focused from either front or rear by rack and pinion, so that the back can be racked up as close to the front as desired. Thus lenses of the widest angle can be used. A sliding tripod block is provided so that the camera can always be supported directly above the tripod or the weight distributed, as the operator may wish.

The back is reversible, a plumb level and strap handle are supplied and both horizontal and vertical cut-off boards are fur-

# EASTMAN VIEW No. 2 IMPROVED MODEL OF EMPIRE STATE

nished so that four different negatives can be made on one plate if desired. The bellows of this camera is made of genuine leather and a spring arrangement working automatically prevents it from sagging at any time.

The method of locking extensions is very convenient, not by means of the old-fashioned, long threaded screw, but by a specially constructed device which locks firmly by merely being pushed in and given a quarter turn. The back extension, which is detachable, in addition to this device is further strengthened by two clamp catches which hold it absolutely rigid.

Especial attention is called to the new 7 x 11 size—a proportion which will prove very attractive to many workers. This camera has an especially wide front board with sliding arrangement which permits the centering of the lens on either half of the 7 x 11 plate when it is desired to make two exposures on one plate. The swing of this model is of unusual latitude to obtain the fullest value, from its proportions, for architectural work.

Anticipating that most photographers will prefer to use Eastman Portrait film with this camera, we will supply the Eastman Portrait Film Holder with it unless otherwise specified.

## SPECIFICATIONS

Bellows: draw, 5 x 7, 23 in.; 6½ x 8½, 26½ in.; 8 x 10, 29½ in.; 7 x 11, 31 in. Weight: 5 x 7, 7 lbs.; 6½ x 8½, 10½ lbs.; 8 x 10, 11¼ lbs.; 7 x 11, 15½ lbs. Size of Lens Board: 5 x 7, 4½ x 4½ in.; 6½ x 8½, 6 x 6 in.; 8 x 10, 6 x 6 in.; 7 x 11, 6⅞ x 3⅞ in. Carrying Case, canvas, combination style, with compartments for camera, holders and tripod. All operating nuts on the right side, binding nuts on the left hand side.

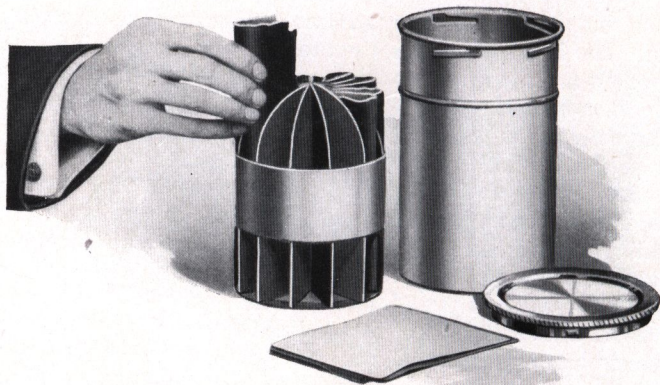
## PRICES

	5x7	6½x8½	8x10	7x11
Eastman View No. 2 (improved model of Empire State) with Case and Holder . . . . .	\$27.00	\$30.00	\$32.00	\$35.00
Eastman View No. 2 Complete Outfit* . . . . .	42.00	52.00	60.00	63.00
Complete Outfit as above, but with Rapid Rectigraphic instead of Symmetrical Lens . . . . .	53.00	64.00	74.00	77.00
Extra Carrying Case . . . . .	4.00	4.50	5.00	6.00
Extra Lens Board . . . . .	.60	.75	.75	1.00

\*Eastman View No. 2 Complete Outfit includes: Eastman View No. 2 Camera, Symmetrical Lens, Double Valve Auto. Shutter, six Plate Holders, Combination Tripod, Focusing Cloth, and Case to hold complete outfit. See illustration similar outfit, page 29.



## P R E M O F I L M P A C K T A N K



**T**HOSE who use the Premo Film Pack need never give a thought to development, for if they will use the Premo Film Pack Tank they can absolutely know that every pack they expose is certain to be perfectly developed, provided they follow the simple directions for use of the tank. This means that the merest beginner, without any need of skill or help, can get as good results in development as the most expert photographer.

For the tank is simplicity itself. It requires no experience, no lengthy manipulation in a close dark-room. And we recommend the tank system to the most careful workers as being infinitely simpler than the older method and producing results superior to those which can be obtained by the most painstaking tray development.

The Premo Film Pack Tank consists of two pieces—a metal receiver or cage for the films, and a tank with cover for the developing fluid. The entire outfit is self-contained and can be easily carried in a corner of a suitcase.

The cage is divided into twelve compartments—in the 5 x 7 size, six—each accommodating one film. As the film is taken from the pack it is held between the thumb and fingers, slightly bent from top to bottom, and slipped into its respective compartment. When all the compartments are filled, the cage is placed

# P R E M O F I L M P A C K T A N K

in tank, which has been previously filled with developer, the top replaced and the films left to develop for a certain specified time. No further attention is necessary except to turn the tank end for end several times during the progress of development.

At the expiration of the full time, open the tank, take out the cage, remove films, place them in a tray of water for a moment, then transfer to the fixing bath. Development is completed. Rinse out cage and tank and set them aside.

The operation of removing films from the pack and loading the cage is done, of course, in a darkened room by the light of a ruby lamp. During the day any darkened closet will suffice; at night any dark room in which the shades are drawn will answer. To load the films in cage will take only two or three minutes, and as soon as the top is placed on tank it may be brought out into any light and left until development is completed. And night is really an ideal time to develop films, as they can be fixed and washed in a short time and will dry over night, being all ready to print from in the morning.

If it is desired to develop less than a dozen films, one merely removes from his pack as many films as have been exposed, places them in the cage, and proceeds in the same manner as described above.

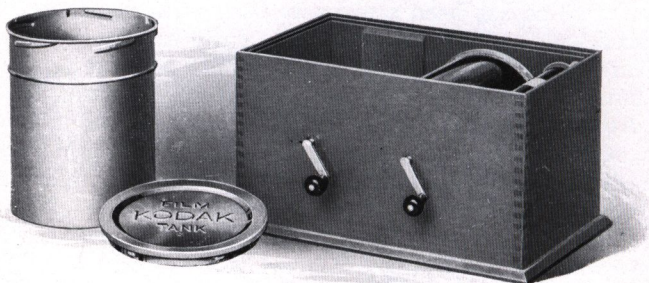
The cage of the No. 1 Tank is slightly different from that shown in the illustration, but the method of loading is the same and, of course, the results are just as dependable in every respect.

Particular attention is called to the necessity of using Premo tank developing powders for normal development in Premo Film Pack Tanks. If Kodak Tank powders are used a longer time for development must be given. Follow closely the instructions which come with every film pack.

## P R I C E S

Premo Film Pack Tank No. 1, for 12 $1\frac{3}{4} \times 2\frac{3}{8}$ or $2\frac{3}{4} \times 3\frac{3}{4}$ films . . .	\$1.50
Ditto, No. 2 for 12 $2\frac{1}{2} \times 4\frac{1}{4}$ , $3\frac{1}{4} \times 4\frac{1}{4}$ , $3 \times 5\frac{1}{4}$ , $3\frac{1}{4} \times 5\frac{1}{2}$ or $4 \times 5$ films . . .	4.00
Ditto, No. 3, for 6 $5 \times 7$ films . . .	4.50
Premo Tank Developing Powders, in packages of 6, No. 1 . . .	.20
Premo Tank Developing Powders, in packages of 6, No. 2 . . .	.25
Premo Tank Developing Powders, in packages of 6, No. 3 . . .	.35
Kodak Acid Fixing Powder, per 1 pound package . . .	.25
Ditto, per $\frac{1}{2}$ pound package . . .	.15
Ditto, per $\frac{1}{4}$ pound package . . .	.10

# K O D A K F I L M T A N K



**T**HE Kodak Film Tank not only develops roll film automatically but it does it in broad daylight, eliminating the necessity for a dark room during any part of the photographic process.

This tank consists of a winding box, a light-proof apron, and a heavily nickeled brass solution cup with cover. In the Brownie Film Tank, however, no cover is necessary as the film roll itself is turned. All articles can be packed in the box, making the entire outfit self-contained.

The film to be developed is placed upon a reel in the winding box, the cover is placed on the box and the film is wound around an axis in combination with the apron, in such fashion that, when completely wound, the apron protects the film effectually from light, and may be removed from the winding box safely at any time. It is then lowered into the cup of developer, the cover attached and the film left to develop for twenty minutes. After development the film is removed for fixing.

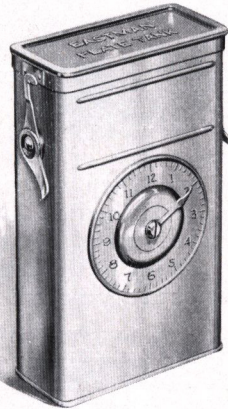
## PRICES

Brownie Kodak Film Tank, for use with No. 2 and No. 2 Folding Cartridge Premo cartridges, complete	\$2.75
Cover for same	.25
2½-inch Kodak Film Tank, for use with all cartridges having a film width of 2½ inches or less, complete	4.00
3½-inch Kodak Film Tank, for use with all Kodak and Brownie cartridges having a film width of 3½ inches or less, complete	5.50
Flexible Rubber Tray, for 3½-inch Kodak Film Tank	1.40
Kodak Tank Developer Powders for Brownie Kodak Film Tank, per package, ½ dozen	.15
Ditto, for 2½-inch tank, per package, ½ dozen	.20
Ditto, for 3½-inch tank, per package, ½ dozen	.20

# EASTMAN PLATE TANK

**I**n the Eastman Plate Tank, plates may be developed in the same manner and with the same assurance of excellent results as may films developed in the Premo Film Pack Tank. The theory of construction is precisely the same, with of course such differences as are necessary because of the physical differences between films and plates.

It consists of a metal solution cup, a cage for holding twelve (or less) plates and a loading fixture for loading plates into the cage. In the  $3\frac{1}{4} \times 4\frac{1}{4}$ ,  $3\frac{1}{4} \times 5\frac{1}{2}$  and  $4 \times 5$  sizes, the cage of plates may be developed in a Premo Film Pack Tank, so that one using a Premo that takes films or plates and having a Premo Film Pack Tank needs only to purchase the cage and loading fixture of the plate tank for the development of his plates, an advantage in economy.



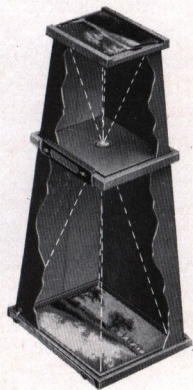
It is thus apparent that the owner of a Premo plate camera can not only use films or plates in his camera with equal facility, but he can also avail himself of the advantages of tank development with either medium.

## PRICES

Eastman Plate Tank for $4 \times 5$ , $3\frac{1}{4} \times 5\frac{1}{2}$ or smaller plates, includes Solution Cup, Plate Cage, Loading Fixture and Adjustable Kit	\$ 4.00
Ditto, $5 \times 7$ , without Kit	5.00
Ditto, $8 \times 10$ , with Adjustable Kit	12.00
Adjustable Kit for $4 \times 5$ or $3\frac{1}{4} \times 5\frac{1}{2}$ Tank, to take smaller plates	.50
Kits for $5 \times 7$ Tank, to take $3\frac{1}{4} \times 5\frac{1}{2}$ , $4\frac{1}{4} \times 6\frac{1}{2}$ or $4\frac{3}{4} \times 6\frac{1}{2}$ plates, each	.75
Extra Adjustable Kit for $8 \times 10$ Plate Tank	1.00
Plate Cage and Loading Fixture for $4 \times 5$ and $3\frac{1}{4} \times 5\frac{1}{2}$ plates (can be used in a $4 \times 5$ Premo Film Pack Tank)	1.10
Eastman Plate Tank Powders, for $4 \times 5$ Tank, per package $\frac{1}{2}$ doz.	.20
Ditto, for $5 \times 7$ Tank, per package, $\frac{1}{2}$ dozen	.35
Ditto, for $8 \times 10$ Tank, per package, $\frac{1}{2}$ dozen	.50
Kodak Acid Fixing Powder, per 1-pound package	.25
Ditto, per $\frac{1}{2}$ -pound package	.15
Ditto, per $\frac{1}{4}$ -pound package	.10

## BROWNIE ENLARGING CAMERA

WITH one of these cameras it's just as easy to make first-class enlargements as it is to print on Velox paper. In fact, the two processes are very much the same excepting that, in ordinary printing, the negative and paper are in contact, while in enlarging, the paper is at some distance from the negative, with a lens in between. The Improved Brownie Enlarging Camera consists of a light-tight cone with attachments to hold a negative at the small end, and a sheet of Bromide or Velox paper at the other. They are collapsible and made in two sections, the lens support holding them firmly together when in use. Exposures may be made to the sky or the Brownie Illuminator specially designed for electric illumination of these Enlarging Cameras.



No. 2 Brownie Post Card Enlarging Camera for post card ( $3\frac{1}{4} \times 5\frac{1}{2}$ ) enlargements from $2\frac{1}{4} \times 3\frac{1}{4}$ negatives	\$1.75
No. 2 Brownie Enlarging Camera, for $5 \times 7$ enlargements from $2\frac{1}{4} \times 3\frac{1}{4}$ negatives	2.00
No. 3 Ditto, for $6\frac{1}{2} \times 8\frac{1}{2}$ enlargements from $3\frac{1}{4} \times 4\frac{1}{4}$ negatives	3.00
No. 4 Ditto, for $8 \times 10$ enlargements from $4 \times 5$ negatives or $6\frac{1}{8} \times 9\frac{3}{4}$ enlargements from $3\frac{1}{4} \times 5\frac{1}{2}$ negatives	4.00
Brownie Illuminator	3.00

## VELOX TRANSPARENT WATER COLOR STAMPS

ANYONE can make beautifully colored prints by the use of Velox Transparent Water Color Stamps.

No special artistic skill, no knowledge of painting whatever is necessary. Just a brush or two and the book of stamps, which includes simple directions for coloring both prints and lantern slides.

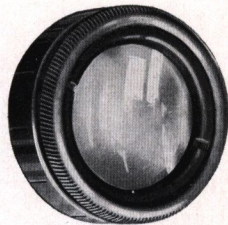
Each book includes twelve sheets of colors and each sheet is divided by perforations into twenty-two stamps. To use any color merely tear off a stamp, place in a small saucer or palette supplied with the outfit, and cover with about a teaspoonful of water.

Velox Transparent Water Color Stamps, complete booklet, 12 colors	\$.25
Separate Color Leaves, two sheets	.05
Set of 3 Special Brushes, per set	.50
Mixing Palette	.25
Velox Transparent Water Color Stamp Outfit, including book, three brushes and palette	.75

# P R E M O A C C E S S O R I E S

## KODAK PORTRAIT ATTACHMENT

This is simply an extra lens which fits on in front of the regular lens and in no way affects the operation of the camera, excepting to so change the focus as to permit working close to the subject, thereby giving good sized head and shoulder portraits. Order by number.



- |        |   |        |
|--------|---|--------|
| No. 0. | For Premo Jrs. Nos. 1 and 1A and Cartridge Premos Nos. 2 and 2A   | \$ .50 |
| No. 1. | For No. 2 Folding Cartridge Premo with Meniscus Lens  | .50    |
| No. 3. | For 3¼ x 4¼ Film Premo No. 1; 3¼ x 4¼ Pocket Premo C; Premoette Jr. No. 1A; Premoette Jrs. Nos. 1 and 1A, <i>f.</i> 7.7; 2½ x 4¼ and 3¼ x 4¼ Premoette Sr.; Premos Jrs. Nos. 3 and 4, and No. 2A Folding Cartridge Premo with either lens | .50    |
| No. 5. | For all 4 x 5, 3A and 5 x 7 Premos Nos. 8, 9 and 10; all sizes of Filmplate Premos; 3A Pocket Premo C; 3A Premoette Sr.; 3A and 4 x 5 Film Premo No. 1  | .50    |
| No. 6. | For Premoette Jr. No. 1A Special, 3¼ x 4¼ Filmplate Premo Special, 2½ x 4¼ and 3¼ x 4¼ Premoette Sr. <i>f.</i> 7.7 and Premo No. 12 <i>f.</i> 6.3   | .50    |
| No. 7. | For 3A Filmplate Premo Special, 3¼ x 5½ Pocket Premo <i>f.</i> 7.7 and 3¼ x 5½ Premoette Sr. <i>f.</i> 7.7  | .50    |
| No. 8. | For Premoette Jr. No. 1 and No. 1 Special, No. 2 Folding Cartridge Premo with R. R. Lens  | .50    |

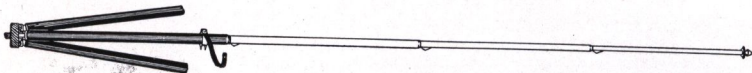
## KODAK SKY AND COLOR FILTERS

The Kodak Sky Filter is designed to equalize the great difference in light between sky and foreground in landscape photography. Therefore only the upper half of the sky filter is stained yellow, the lower half being colorless. The Kodak Color Filter is stained throughout and is for use for all subjects, such as flowers for instance, embracing colors which act weakly on the sensitive films. In ordering be sure to specify which is wanted.

- |        |  |        |
|--------|--|--------|
| No. 0. | For Premo Jrs. 1 and 1A and Cartridge Premos 2 and 2A  | \$ .50 |
| No. 1. | For No. 2 Folding Cartridge Premo with Meniscus Lens   | .50    |
| No. 3. | For 3¼ x 4¼ Film Premo No. 1; Premoette Jr. No. 1A; Premoette Jrs. Nos. 1 and 1A, <i>f.</i> 7.7; 2½ x 4¼ and 3¼ x 4¼ Premoette Sr.; Premo Jrs. Nos. 3 and 4, and No. 2A Folding Cartridge Premo with either lens | .75    |
| No. 5. | For all sizes of Premos Nos. 8, 9 and 10 and Filmplate Premos; 3A Pocket C; 3A Film Premo No. 1 and Premoette Sr.  | 1.00   |
| No. 6. | For Premoette Jr. No. 1A Special; 3¼ x 4¼ Filmplate Premo Special; 2½ x 4¼ and 3¼ x 4¼ Premoette Sr. <i>f.</i> 7.7 and Premo No. 12 <i>f.</i> 6.3  | .75    |
| No. 7. | For 3A Filmplate Premo Special; 3¼ x 5½ Pocket Premo C <i>f.</i> 7.7 and 3¼ x 5½ Premoette Sr. <i>f.</i> 7.7   | 1.00   |
| No. 8. | For Premoette Jr. No. 1 and No. 1 Special; No. 2 Folding Cartridge Premo with R. R. Lens   | .50    |

# P R E M O A C C E S S O R I E S

## KODAK METAL TRIPOD



Combining light weight and compactness with exceptional rigidity, this is an ideal tripod for cameras up to 5 x 7.

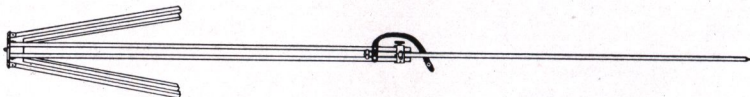
Has telescoping legs of brass tubing—lower sections nickered, the upper black enameled—and should a part become inoperative through wear or accident, any section may be removed for repairs. This is a unique feature among metal tripods.

When extended each section catches and holds firmly. To close, it is necessary to press in top catch only, the others then releasing automatically.

The Nos. 1 and 2 have revolving heads for attaching to camera. With this construction the camera may be swung, so as to take in the desired view without moving the tripod, a distinct advantage over other types of metal tripods. The Nos. 1 and 2 also have straps for holding the legs in place when closed. The No. 6 has folding head and folds into such a compact flat package that it can easily and conveniently be carried in the pocket.

	Sections.	Closed.	Length Extended.	Weight.	Price.
Kodak Metal Tripod No. 0	3	15½ in.	39½ in.	15 ozs.	\$2.00
Kodak Metal Tripod No. 1	4	15 in.	48½ in.	24½ ozs.	3.00
Kodak Metal Tripod No. 1C	4	15¼ in.	48¾ in.	25½ ozs.	2.75
Kodak Metal Tripod No. 2	5	13½ in.	49½ in.	25 ozs.	3.75
Kodak Metal Tripod No. 2C	5	13¾ in.	49¾ in.	26 ozs.	3.50
Kodak Metal Tripod No. 6	6	11⅜ in.	40 in.	24 ozs.	5.50
Leatherette Case for No. 0 or No. 1					.75
Leather Carrying Case for any style					1.75

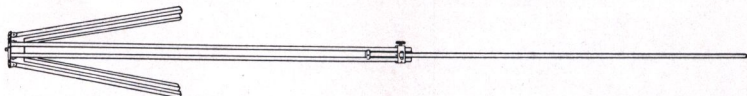
## FLEXO TRIPOD



For cameras up to and including the 5 x 7 size this is a very satisfactory tripod at small expense. Only clear, straight grained spruce is used in its construction.

Price, \$ .90

## BULL'S-EYE TRIPOD

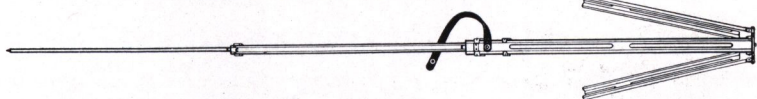


Two sections. Aluminum revolving head. Made of maple, with brass fittings. For 4 x 5 cameras, or smaller. Length, extended, 42½ inches; folded, 24 inches. The only two-section tripod that will go into a suitcase.

Price, \$1.50

# P R E M O A C C E S S O R I E S

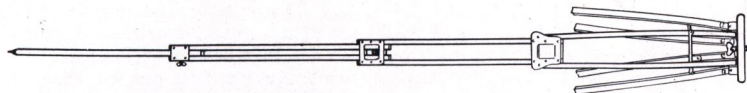
## STANDARD TRIPOD



The feature of this tripod is the automatic locking of the sections when they are extended. Light, compact and rigid. Fixed, non-detachable head. Length, folded, 21 inches; extended, 53½ inches. Weight, 18 ounces. Cherry finish, brass trimmings.

Price, \$1.75

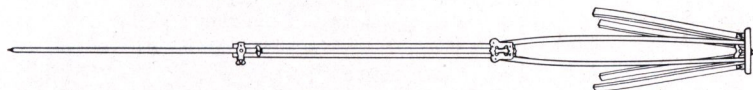
## COMBINATION TRIPOD



This tripod is made on the sliding and folding principle. The wood parts are of ash and the finish is of the very best.

Style	Size of Camera.	Weight.	Price.
No. 2½	6½ x 8½ and smaller	3 lbs.	\$3.00
No. 3	8 x 10 and 10 x 12	4 lbs.	3.50
No. 4	11 x 14 and 14 x 17	5 lbs.	4.50
No. 5	17 x 20 and 20 x 24	8 lbs.	6.00

## SLIDING TRIPOD



A perfectly rigid tripod for the heaviest cameras. The No. 1 and No. 2 are made of spruce, the No. 3 and No. 4 of ash.

Style.	Size of Camera.	Weight.	Price.
No. 1	5 x 7 and smaller	2 lbs.	\$2.00
No. 2	5 x 8 and 6½ x 8½	2 lbs. 8 ozs.	2.50
No. 3	8 x 10 and 10 x 12	4 lbs. 8 ozs.	3.00
No. 4	11 x 14 and 14 x 17	6 lbs. 8 ozs.	4.00

## EASTMAN TRIPOD BRACE

An exceedingly simple device for holding the tripod legs in position when extended. Cannot collapse.

Eastman Tripod Brace . . . Price, \$1.00

## R. O. C. TRIPOD TRUCK

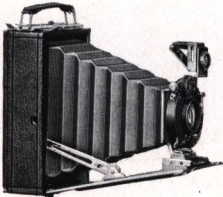
An excellent device for those who use a tripod indoors. Perfectly solid when extended, supplied with casters and folds compactly when not in use.

R. O. C. Tripod Truck	{ No. 1 for average tripods	. \$1.00
	{ No. 2 for very heavy tripods	. 1.25



# PREMO ACCESSORIES

## THE UNIVERSAL CLAMP



The Universal Clamp is a small, convenient substitute for a tripod which may be attached to any camera. It can be carried readily in the pocket, is very light, and may be attached to a chair, fence, automobile or motorcycle handle bar. The clamp jaws are padded with felt.

Price . . . . . \$ .75



## UNIVERSAL TRIPOD HEAD

This is made upon the same principle as the Universal Clamp described above, but in place of the clamp jaws, is provided with a solid head with socket which will accommodate any regular tripod screw. With this device the camera can be used on a tripod and tilted to any angle up to 90 degrees.

Price, \$ .75

## DEVELOPING TRAYS

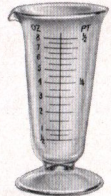
Bulls-Eye, 3¼ x 4¼ . . . . .	\$ .12	Eastman Enameled, 4¾ x 5¾ . . . . .	\$ .25
Bulls-Eye, 4 x 5 or 4 x 6 . . . . .	.15	Eastman Enameled, 4 x 6 . . . . .	.25
Bulls-Eye, 5 x 7 . . . . .	.25	Eastman Enameled, 5¼ x 7¾ . . . . .	.50

## EASTMAN VISIBLE GRADUATE

This new moulded graduate, as its name implies, may be easily read in the dark room under the rays of the ruby light.

The graduations are opaque and not translucent as is the case with most graduates.

2 ounce . . . . .	\$ .20	8 ounce . . . . .	\$ .40
4 ounce . . . . .	.25	16 ounce . . . . .	.60



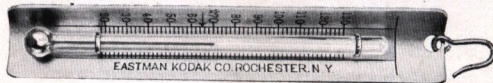
## THERMOMETER STIRRING ROD



Two articles of great use to the amateur, combined in one. The rod is ¼-inch in diameter and 9 inches long. One end is flattened for crushing purposes. The thermometer is carefully tested and is unusually accurate.

Price, \$ .75

## EASTMAN THERMOMETER



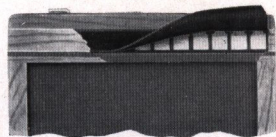
Especially suitable for determining the temperature in tank development. Made with curved back to fit inside of tank.

Price, \$ .65

# P R E M O A C C E S S O R I E S

## P R E M O P L A T E H O L D E R

Premo holders are made absolutely light tight by a fully patented light-lock. This device is shown in cut and is constructed of finely tempered, non-corrosive metal with independently operating spring fingers overlaid with a closely woven, specially prepared fabric. A slide can be inserted cornerwise without admitting light to the plate. Fitted with lacquered press-board slides that will not electrify, collect dust, crack or split.



3¼ x 4¼ .	\$1.00	4 x 5 .	\$1.00	6½ x 8½ .	\$1.75
3¼ x 5½ .	1.00	5 x 7 .	1.25		

## E A S T M A N V I E W H O L D E R

These holders are made with bottom flap, avoiding all danger of plates falling out. They are strongly constructed, have patented spring finger light-lock, and made to fit both models of the Eastman View Camera. Slides are of lacquered press-board.

5 x 7 .	\$1.00	8 x 10 .	\$1.25	7 x 11 .	\$1.25
6½ x 8½ .	1.10				

## U N I V E R S A L P L A T E H O L D E R

Made in the same style as the Eastman View Holder but to fit Empire State and Premo View Cameras.

5 x 7 .	\$1.00	8 x 10 .	\$1.25	14 x 17 .	\$5.00
6½ x 8½ .	1.10	11 x 14 .	4.00		

## E A S T M A N P O R T R A I T F I L M H O L D E R S

For use with portrait films, to fit Eastman View, Universal and Premo View Cameras.

5 x 7 .	\$1.00	8 x 10 .	\$1.25	11 x 14 .	\$4.00
6½ x 8½ .	1.10	7 x 11 .	1.25		

## R . O . C . P L A T E H O L D E R

This holder is of good construction, it has the patented light trap feature of Premo holders, and is adapted for use in the R. O. C. View Camera.

5 x 7 .	\$1.00	6½ x 8½ .	\$1.10	8 x 10 .	\$1.25
---------	--------	-----------	--------	----------	--------

## P L A T E H O L D E R A N D A D A P T E R S L I D E S

### L A C Q U E R E D P R E S S B O A R D

3¼ x 4¼ .	\$ .20	5 x 7 .	\$ .25	8 x 10 .	\$ .40
3¼ x 5½ .	.20	6½ x 8½ .	.30	11 x 14 .	.60
4 x 5 .	.20				

### H A R D R U B B E R

5 x 7 .	\$ .35	6½ x 8½ .	\$ .50	8 x 10 .	\$ .65
---------	--------	-----------	--------	----------	--------

# PREMO ACCESSORIES

## PLATE HOLDER KITS

Size Outside.	Size of Opening for Plate.		Price.
4 x 5	3¼ x 4,	3¼ x 4¼	\$ .20
5 x 7	3¼ x 4,	3¼ x 4¼, 3¼ x 5½, 4 x 5, 4¼ x 6½	.25
6½ x 8½	3¼ x 4¼,	4 x 5, 3¼ x 5½, 4¼ x 6½, 4¾ x 6½, 5 x 7	.30
8 x 10	4¼ x 6½,	4¾ x 6½, 5 x 7, 6½ x 8½	.40
11 x 14	6½ x 8½,	8 x 10, 10 x 12	.50
14 x 17	10 x 12,	11 x 14	.80

## GLASS DRY PLATES

Seed, Standard or Stanley.

Size.	Price per Dozen.	Size.	Price per Dozen.	Size.	Price per Dozen.
3¼ x 4¼	.45	4¼ x 6½	.90	6½ x 8½	\$1.65
3¼ x 5½	.65	5 x 7	1.10	8 x 10	2.40
4 x 5	.65	5 x 8	1.25		

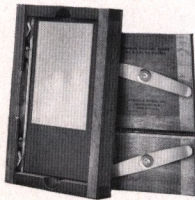
## EASTMAN PORTRAIT FILM

Including three Eastman Safety Envelopes for storing.

Size.	Price per Dozen.	Size	Price per Dozen	Size.	Price per Dozen.
5 x 7	\$1.10	8 x 10	\$2.40	11 x 14	\$6.00
6½ x 8½	1.65	7 x 11	2.40		

## PRINTING FRAMES

Especial attention is called to the new Kodak Maskit Printing Frame. It is furnished with a series of paper masks, and a patented, simple working device on the inside of the frame holds paper mask and negative firmly together, preventing all chance of slipping. All Eastman printing frames are strongly constructed of suitable material.



### PRICES

Kodak Maskit Printing Frame, 3¼ x 4¼, opens two-thirds	.40
Kodak Maskit Printing Frame, 3¼ x 5½, opens two-thirds	.45
Kodak Maskit Printing Frame, 5 x 7, opens two-thirds	.50
Eastman, for 2¼ x 3¼ plates for 1½ x 2½ or smaller films	.25
Eastman, 2½ x 4¼ or 3¼ x 3½, opens two-thirds	.25
Eastman, 3¼ x 4¼, opens two-thirds	.25
Eastman, 3¼ x 5½, for films, opens two-thirds	.25
Ditto, for plates	.25
Eastman, 4 x 5, opens two-thirds	.25
Eastman, 5 x 7, opens two-thirds	.35

## KODALOID PRINTING MASKS

Transparent orange color masks for use with Maskit Printing Frames in sets of three each with different openings.

For 3¼ x 4¼ frame, per set of three	\$ .20
For 3¼ x 5½ frame, per set of three	.25
For 5 x 7 frame, per set of three	.30

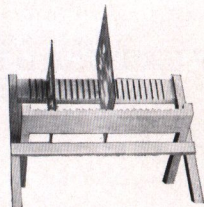
Black Paper Masks, same sizes as above.

Price per set of three, any size	\$ .10
----------------------------------	--------

## PREMO NEGATIVE RACK

This rack accommodates negatives of all sizes. It folds flat when not in use.

No. 1, for 12 negatives	\$ .20
No. 2, for 24 negatives	.25



# P R E M O A C C E S S O R I E S

## KODAK CANDLE LAMP

This lamp is collapsible, well made, of special tested ruby fabric, bound in metal frames.

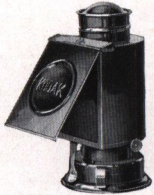
Kodak Candle Lamp . . . . . \$ .25  
Extra Candles for same, per dozen .30



## KODAK DARK ROOM LAMP

The Kodak Dark Room Lamp is oil burning and is fitted with both orange and ruby glass.

No. 2 Kodak Dark Room Lamp \$1.00

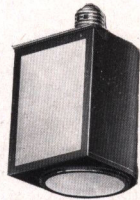


## BROWNIE SAFELIGHT LAMP

Just a trifle larger than the electric bulb which goes inside it, this is an inexpensive but reliable safelight lamp for the amateur. The complete lamp screws into any electric socket. It takes a 15 watt mazda bulb and has removable circular safelight in the bottom and square one on the side, as shown in illustration.

A very convenient, clean lamp for the average amateur and easily carried in the bag of the traveler or vacationist for use as required.

Brownie Safelight Lamp . . . \$1.00

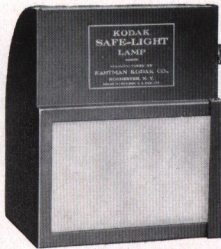


## KODAK SAFELIGHT LAMP

Those who have electricity in the house will find this lamp much superior to other types for dark room work. It is made upon the Wratten system of safelight lamps with special reference to the requirements of the amateur.

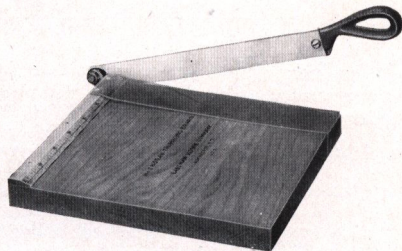
Price includes safelight and four feet of electric cord with socket.

Kodak Safelight Lamp . . . \$3.00



## KODAK TRIMMING BOARD

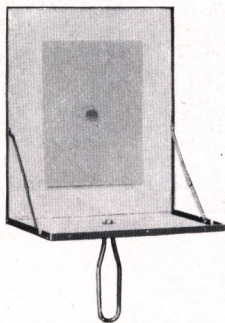
A thoroughly reliable trimming board at a moderate price, constructed of hard wood with natural finish. The blade is of the best steel and a rule is fitted to the board.



No. 1, 5 x 5 inches . . . . . \$ .40  
No. 2, 7 x 7 inches . . . . . .60  
Transparent Trimming Gauge for either (extra) . . . . .20

# P R E M O   A C C E S S O R I E S

## FLASH-LIGHT MATERIAL



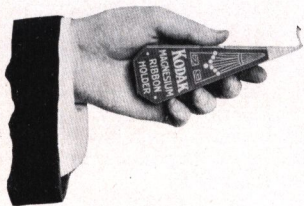
The simplest and safest method of making flash-light pictures is by means of the Eastman Flash Sheets and Kodak Flash Sheet Holder. The sheets burn slowly, giving a broad, soft light, and not so startling the subject as to give a staring effect to the eyes.

The holder is a genuine innovation. A saw tooth holds the sheet in proper position and it is lighted from the back through an aperture provided in the center for the purpose. In this manner the holder is always between the operator and the flash sheet, and it may be held in the hand or supported on a tripod, a socket being provided for the latter purpose.

*No. 1 Flash Sheets, per package of ½ dozen sheets, 3 x 4	\$ .35
*No. 2 Flash Sheets, per package of ½ dozen sheets, 4 x 5	.56
*No. 3 Flash Sheets, per package of ½ dozen sheets, 5 x 7	.84
Kodak Flash Sheet Holder	1.00

\*Prices subject to change without notice.

## KODAK MAGNESIUM RIBBON HOLDER



This extremely handy little apparatus provides a most convenient method of burning magnesium ribbon for photographic purposes. It comprises at once a compact magazine for storing the ribbon, a convenient holder for burning it, and a means of measuring definite lengths of the ribbon.

Kodak Magnesium Ribbon Holder	\$ .20
Alcohol Lamp, for use with above	.20

## FLEXO PRINT ROLLER

An inexpensive but very satisfactory roller for amateur use; has black enameled frame and a 4-inch rubber roller.

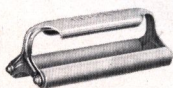
Price, \$ .20



## KODAK PRINT ROLLER

The best roller ever made for general amateur use; has double rubber rollers, 2 x 6 inches, and nickeled frame.

Price, \$ .50



# PREMO ACCESSORIES

## EASTMAN PHOTO PASTE

A solid, first quality white paste. Will not cockle nor discolor print or mount.



Jars.		Tubes.	
4 ounce	. \$ .10	2 ounce	. \$ .10
8 ounce	. .20	3 ounce	. .15
		5 ounce	. .25

## DEVELOPING AND PRINTING

Premo Film Packs	Developing and Printing Per Pack.		Developing only, Per Pack.	Printing only, Each Exposure.	
	Mounted.	Unmounted.		Mounted.	Unmounted.
1 3/4 x 2 3/4, 12 exp.	\$ .95	\$ .89	\$ .40	\$ .06	\$ .05 1/2
2 1/4 x 3 1/4, 12 exp.	1.40	1.28	.50	.08	.07
2 1/2 x 4 1/4, 12 exp.	1.50	1.38	.70	.08	.07
3 1/4 x 4 1/4, 12 exp.	1.50	1.38	.70	.08	.07
3 3/4 x 5 1/2, 12 exp.	1.80	1.68	1.00	.10	.09
4 x 5, 12 exp.	1.80	1.68	1.00	.10	.09
5 x 7, 12 exp.	2.40	2.10	1.20	.12 1/2	.10
Cartridge Films					
1 1/4 x 1 3/4, 6 exp.	\$ .45	\$ .42	\$ .12	\$ .06	\$ .05 1/2
2 1/4 x 3 1/4, 6 exp.	.70	.64	.25	.08	.07
2 1/2 x 4 1/4, 12 exp.	1.50	1.38	.70	.08	.07

Unmounted Velox prints are furnished unless otherwise specified.  
 "Double Weight" prints will be billed at mounted rates.  
 No orders executed for less than 25 cents.

## DEVELOPING AND PRINTING OUTFITS

Eastman 3A Outfit includes every requisite for developing by the dark room method, printing and finishing twenty-four 3 1/4 x 5 1/2 or smaller pictures.

1 Kodak Candle Lamp, 25c; 1 Printing Frame, 25c; 1 Glass for Frame, 5c; 1 4-ounce Graduate, 15c; 1 Stirring Rod, 5c; 4 Developing Trays, 40c; 5 Tubes Eastman's Special Developer, 25c; 1/2 pound Kodak Acid Fixing Powder, 15c; 1 package Bromide Potassium, 10c; 2 dozen 3 1/4 x 5 1/2 Velox Paper, 30c; 2 ounces Nepera Solution, for developing Velox, 10c; Instruction Book. These articles if purchased separately would cost \$2.05. Price, complete, neatly packed, \$1.50.

A B C Outfit, similar to above, but for 4 x 5 negatives, \$1.50.

## BAUSCH & LOMB PROTAR LENS—SERIES V, F. 18

(Formerly listed as Bausch & Lomb Zeiss Protar Lens)

Designed for extreme wide-angle work, this lens embraces a field of 110 degrees.

No.	Size.	Equivalent Focus.	Price.	No.	Size.	Equivalent Focus.	Price.
1	4 1/4 x 6 1/2	3 3/8 in.	\$20.00	3	6 1/2 x 8 1/2	5 9/16 in.	\$25.00
2	5 x 7	4 1/16 in.	20.00	4	8 x 10	7 1/16 in.	31.00

## SYMMETRICAL WIDE-ANGLE LENS

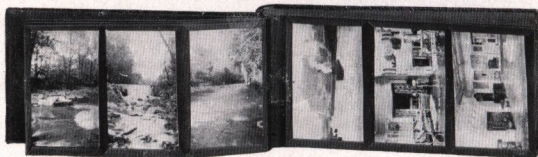
Has an angle of about 80 degrees and is furnished in cells to interchange with the various lenses supplied on Premo Cameras.

No.	Size.	Equivalent Focus.	Price in Cells Only.	No.	Size.	Equivalent Focus.	Price in Cells Only.
1	4 x 5	3 3/8 in.	\$ 5.00	3	6 1/2 x 8 1/2	6 7/8 in.	\$12.00
2	5 x 7	5 in.	7.50	4	8 x 10	8 in.	15.00

# P R E M O A C C E S S O R I E S

## THE KODAK ALBUM

(Patent Applied For)



Made on a new principle, which does away with mounting prints by paste or otherwise. They are merely slipped into pocket strips at top and bottom, and will not come out unless removed by hand. Has handsome grain leather cover and black leaves with linen finish.

A, 2¼ x 3¼, 25 leaves, 3 on	.	.	.	.	.	.	.	.	.	\$2.25
B, 2½ x 4¼, 25 leaves, 3 on	.	.	.	.	.	.	.	.	.	2.50
C, 3¼ x 4¼, 25 leaves, 3 on	.	.	.	.	.	.	.	.	.	2.50
D, 3¼ x 5½, 25 leaves, 3 on	.	.	.	.	.	.	.	.	.	2.75
E, 3¼ x 5½, 50 leaves, 3 on	.	.	.	.	.	.	.	.	.	3.50
F, 4 x 5, 25 leaves, 2 on	.	.	.	.	.	.	.	.	.	2.60
G, 4¼ x 6½, 25 leaves, 2 on	.	.	.	.	.	.	.	.	.	2.75
H, 5 x 7, 25 leaves, 2 on	.	.	.	.	.	.	.	.	.	3.00

## THE HERCULES ALBUM

A distinct innovation in a loose-leaf album. Has solid back and flexible cover of genuine leather in an unusually attractive blend of grey and black. Has pocket in back cover for extra prints and an end flap so that album can be closed with clasp, imparting a very finished look to it. An album that will decorate the finest library table.

A, 5 x 8	\$2.65	B, 7 x 11	\$3.25	C, 10x12	\$4.35	D, 9 x 14	\$5.00
Pkg. 12 extra leaves	.12		.15		.30		.35

## THE TIBER ALBUM

A very flexible loose leaf album with imitation leather covering and 50 black leaves.

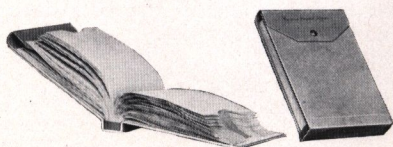
A, 5 x 8	\$ .75	B, 7 x 11	\$1.00	C, 10x12	\$1.65	D, 9 x 14	\$1.90
Pkg. 12 extra leaves	.12		.15		.25		.30

## THE FORUM ALBUM

Flexible, black leather embossed cloth cover.

A, 25 black leaves, or N, 25 Sepia leaves, 5½ x 7	.	.	.	.	.	.	.	.	.	\$ .40
B, 25 black leaves, or O, 25 Sepia leaves, 7 x 10	.	.	.	.	.	.	.	.	.	.55
C, 25 black leaves, or P, 25 Sepia leaves, 10 x 7	.	.	.	.	.	.	.	.	.	.55
D, 25 black leaves, or R, 25 Sepia leaves, 11 x 14	.	.	.	.	.	.	.	.	.	1.25
E, 50 black leaves, 5½ x 7	.	.	.	.	.	.	.	.	.	.55
F, 50 black leaves, 7 x 10	.	.	.	.	.	.	.	.	.	.85
G, 50 black leaves, 10 x 7	.	.	.	.	.	.	.	.	.	.85
H, 50 black leaves, 11 x 14	.	.	.	.	.	.	.	.	.	1.50

## EASTMAN FILM NEGATIVE ALBUMS



For 100 negatives, 2¼ x 4¼, or smaller	\$ .75
For 100 negatives, 3¼ x 4¼, or 4 x 5	1.00
For 100 negatives, 3¼ x 5½, or smaller	1.00
For 100 negatives, 5 x 7, or smaller	1.50

# PREMO ACCESSORIES

## CARD MOUNTS

### BALTIC

Buff, Brown or Grey.			
Heavy stock, beveled edge, heavy borders—a beautiful rich mount.			
For Prints.	Size Outside.	Per 50.	Per 100.
2¼ x 3¼	4¾ x 5¾	\$.60	\$1.20
2½ x 4¼	4½ x 6¼	.70	1.35
3¼ x 4¼	5½ x 6¾	.75	1.45
3¼ x 5½	5¾ x 8	.85	1.70
4 x 5	6 x 7	.90	1.80
5 x 7	8 x 10	1.50	3.00

### RIVIERA

Ash Grey and White.			
For Prints.	Size Outside.	Per 50.	Per 100.
1½ x 2	3 x 3½	\$.20	\$.35
2¼ x 3¼	3½ x 4½	.30	.55
2½ x 4¼	4¼ x 5¾	.40	.75
3¼ x 4¼	4½ x 5¾	.40	.75
4 x 5	5½ x 6¾	.50	.95
3¼ x 5½	5½ x 7¼	.55	1.05
5 x 7	7 x 9	.85	1.65

## INSLIP ENLARGEMENT MOUNT

Color, English Gray or Sepia-Buff.

For Prints.	Size Outside.	Price Per Dozen.	For Prints.*	Size Outside.	Price Per Dozen.
A 3¼ x 5½	7¾ x 9¾	\$.55	E 5 x 8½	9¾ x 13¾	\$.65
B 3¾ x 5½	8½ x 9¾	.55	F 6½ x 8½	11¾ x 13¾	.67
C 4¼ x 6½	8½ x 10¾	.55	G 6 x 10	10¾ x 14¾	.72
D 5 x 7	9¾ x 11¾	.55	H 8 x 10	12¾ x 14¾	.90

For Prints.	Size Outside.	Price Per Half Dozen.	For Prints.	Size Outside.	Price Per Half Dozen.
J 10 x 12	15¼ x 17¼	\$.90	L 8 x 14	14¼ x 20¼	\$.67
K 7 x 12	12 x 17	.67	M 11 x 14	17¼ x 20¼	1.25

## WOODMAT

A unique medium for mounting prints on the "slip in" principle, giving the effect of a rich brown wood frame.

	For Print.	Outside.	Each.
No. 1	2¼ x 3¼	4¾ x 5¾	\$.05
No. 1A	2½ x 4¼	4¾ x 6¾	.06
No. 3	3¼ x 4¼	5½ x 6½	.07
No. 3A	3¼ x 5½	6¼ x 8¾	.08
No. 4	4 x 5	6¾ x 7¾	.08
No. 4A	4¼ x 6½	7 x 9¼	.10



## SUNDRIES

Cable Release . . . . .	\$.25	Screws for Tripod Leg:	
Bulbs and Tubes, No. 2 . . . . .	.25	Nos. 1, 2 and 3 . . . . .	.10
Bulbs and Tubes, No. 3 . . . . .	.35	Nos. 4 and 5 . . . . .	.15
Film Clips, Kodak Junior . . . . .	.10	Milled Head Screws for Cameras:	
Film Clip, Eastman, 3½-inch,		½ inch and smaller . . . . .	.10
per pair . . . . .	.25	Larger than ½ inch . . . . .	.15
Focus Cloth, Rubber . . . . .	.50	Shoulder Straps, Black:	
Ground Glass:		½ x 52 inch with Snaps and	
4 x 5 . . . . .	.20	Buckles . . . . .	.40
5 x 7 . . . . .	.25	5½ x 52 inch with Snaps and	
6½ x 8½ . . . . .	.35	Buckles . . . . .	.50
8 x 10 . . . . .	.40	½ x 66 inch, with Buckle . . . . .	.40
Reversible Backs:		5½ x 74 inch, with Buckle . . . . .	.50
For View Cameras, 5 x 7 . . . . .	5.00	Tan Straps for View Cases with	
For View Cameras, 6½ x 8½ . . . . .	6.00	Buckle. Specify style and	
For View Cameras, 8 x 10 . . . . .	7.00	size of camera when order-	
Premo View Finder . . . . .	1.50	ing:	
Screws for Tripod Head:		34, 40 and 44 inches . . . . .	.40
Nos. 1, 2 and 3 . . . . .	.15	52, 60 and 66 inches . . . . .	.50
Nos. 4 and 5 . . . . .	.25	Tube, per foot . . . . .	.06



## TESTED CHEMICALS

Eastman Chemical Outfit . . . . .	\$0.30
Eastman Special Developer Powders, per package 5, in sealed glass tubes . . . . .	.25
Eastman Hydrochinon Developer Powders, per dozen . . . . .	.50
Ditto, per ½ dozen . . . . .	.25
Ditto, per package 5 powders, in sealed glass tubes . . . . .	.25
Eastman Pyro Developer Powders, per dozen . . . . .	.50
Ditto, per ½ dozen . . . . .	.25
Ditto, per package 5 powders, in sealed glass tubes . . . . .	.25
Tozol, per 1-ounce bottle . . . . .	.50
Elon, per 1 ounce . . . . .	1.00
Roylon, per 1-ounce bottle . . . . .	.88
Hydrochinon, per 1-ounce bottle . . . . .	.72
Eastman Permanent Crystal Pyro, per 1-ounce bottle . . . . .	.33
Velox Re-developer Tubes, package of 12 tubes . . . . .	.60
Hypo Sulphite of Soda, granular, per pound . . . . .	.08
Alum, powdered, per pound . . . . .	.40
Kodak Acid Fixing Powder, per pound package . . . . .	.25
Ditto, per ½-pound package . . . . .	.15
Ditto, per ¼-pound package . . . . .	.10
Eastman Intensifier, glass tube, per tube . . . . .	.15
Eastman Reducer, per box of 5 tubes . . . . .	.25
Eastman Opaque No. 1, per tube . . . . .	.15
Potassium Bromide, per ounce . . . . .	.65
Acetic Acid, 28 per cent., per 1-pound bottle . . . . .	.33
Citric Acid, 4-ounce bottle . . . . .	.40
Eastman Tested Carbonate of Soda (desiccated), per 1-pound bottle . . . . .	.22
Eastman Tested Sulphite of Soda (desiccated), per 1-pound bottle . . . . .	.33

These prices subject to change without notice.

## VELOX PAPER AND SUNDRIES

Size.	Single Weight.			Double Weight.		
	Doz.	½ Gross.	Gross.	Doz.	½ Gross.	Gross.
2¼ x 3¼ . . . . .	\$.10	\$.60	\$1.00	\$.15	\$.75	\$1.25
2½ x 4¼ . . . . .	.12	.70	1.25	.18	.90	1.55
3¼ x 4¼ . . . . .	.15	.80	1.50	.20	1.00	1.90
3¼ x 5½ . . . . .	.15	.80	1.50	.20	1.00	1.90
4 x 5 . . . . .	.20	1.10	2.00	.25	1.40	2.50
5 x 7 . . . . .	.35	2.00	3.50	.45	2.50	4.40
Velox Post Cards . . . . .				.20	1.10	2.00
N. A. (Non-abrasion) Velox Liquid Developer, 4-ounce bottle (makes 20 ozs. for Special, 12 ozs. for Regular) . . . . .						.25
Ditto, 16-ounce bottle . . . . .						.75
Nepera Solution, per 4-ounce bottle . . . . .						.20
Ditto, per 16-ounce bottle . . . . .						.60
Nepera Auxiliary Powders (for converting Nepera solution to a film or plate developer), per package 1 dozen . . . . .						.15
Velox Re-developer for Sepia Tones, per 4-ounce bottle . . . . .						.50
Ditto, 2 ounces (sufficient for 150 4 x 5 prints) . . . . .						.30
Nepera M. Q. N. A. Tubes, box of 5 tubes . . . . .						.75
Kodak N. A. M. Q. Developer, per package 3 tubes . . . . .						.25

## T e r m s

The prices in this catalogue are strictly net, except to regular dealers who carry our goods in stock. For the convenience of our customers we recommend that they make their purchases from a dealer in photographic goods, as by so doing they can save both time and express charges.

ROCHESTER OPTICAL DIVISION,

EASTMAN KODAK CO.,

ROCHESTER, N. Y.

