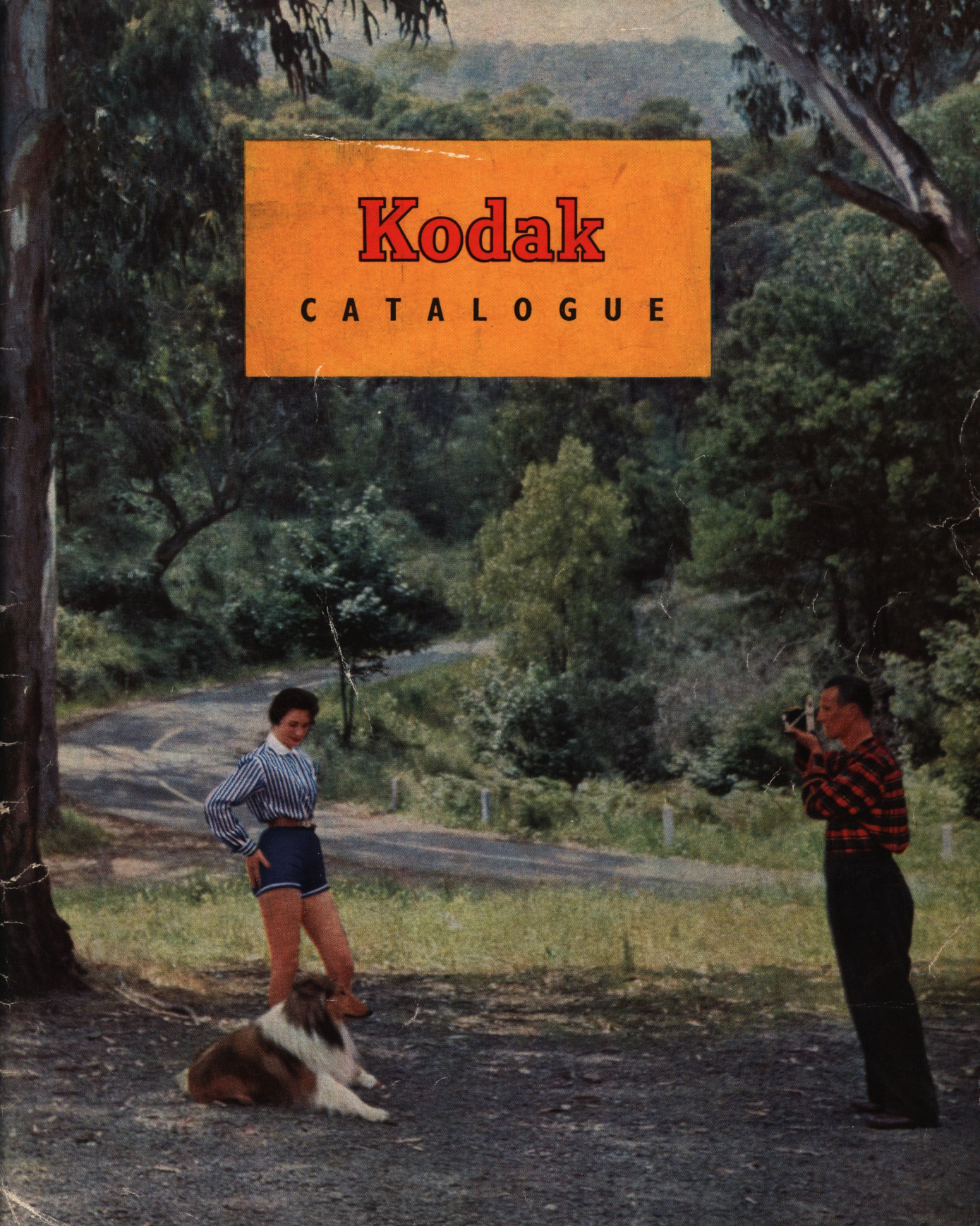


Kodak

C A T A L O G U E



Kodak

C A T A L O G U E



This catalogue features selected items from the most comprehensive range of photographic equipment and supplies ever presented in Australia. Their inclusion, however, does not necessarily imply that all are readily available at any particular time.



Kodak

CATALOGUE

INDEX

CAMERAS

Brownies	4, 5
Ensign	12, 13, 14
Flexaret	14
Hasselblad	16
Kodak Duaflex	5
Kodak Junior	6
Kodak Retina	8, 9
Kodak Sterling	7

PICTURE MAKING ACCESSORIES

Cable Releases	22
Carrying Cases	18
Exposure Meters	19
Filters	21
Flash Equipment	26
Floodlighting Equipment	24, 25
Hasselblad Accessories	17
Lens Attachments	20
Lens Cleaning Tissue	22
Photographic Lamps	57
Rangefinders	22
Retina Accessories	10, 11
Shoulder Bag	18
Tripod Heads	22
Tripods	22

PROCESSING ACCESSORIES

Chemical Mixing Plungers	30
Developing Dishes	31
Developing Tanks	28
Film Clips	31
Forceps	31
Funnels	30
Glazers	38
Graduates	31
Photo-Finishing Kits	29
Pins, Darkroom	31
Printers	38
Printing Frames	38
Printing Masks	38
Print Rollers	38
Safelight Lamps	30, 31
Stirring Paddles	30
Thermometers	31
Timers	31
Trimmers	38, 47

ENLARGERS AND ACCESSORIES

Focus Finders	37
Foot Switches	37
Gnome Enlargers	35, 36
Kodak Precision Enlarger	33
Lenses, Enlarging	36
Lusca Enlarger	34
Masking Boards	37
Rax Enlarger	35

ALBUMS, FRAMES, BOOKS

Albums	48, 49
Frames	50
Kodak Data Books	51
Photographic Books	53

PROJECTORS AND ACCESSORIES

Fantax Projector	40
Kodachrome Kodaslide Transparencies	42-46
Kodaslide File Boxes	41
Kodaslide Projector	39
Neo-Diafant Projector	40
Projection Stands	41
Screens	41
Viewers	41

COLOURING, RETOUCHING, MOUNTING

Colouring Supplies	47
Corners	47
Photo Paste	47
Liquid Glue	47
Retouching Supplies	47

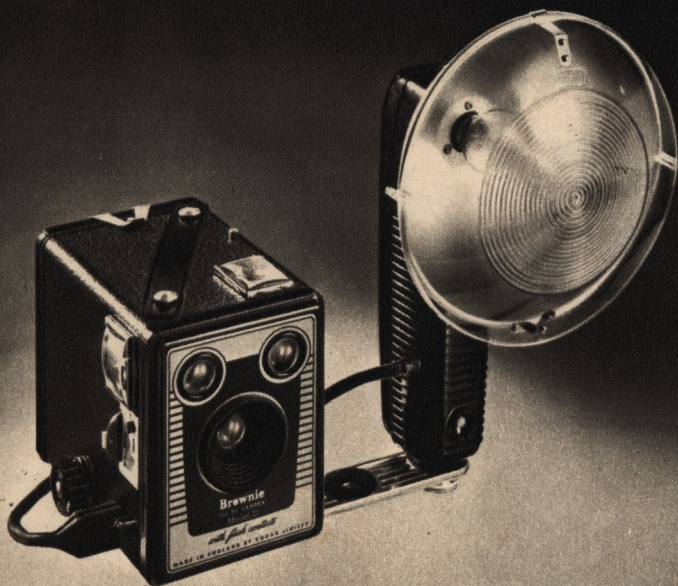
SENSITIZED MATERIALS

Film, Plates, Papers	58, 59
----------------------------	--------

MISCELLANEOUS

Chemical Preparations	60, 61
How Kodak Film is Made	54, 55
Kodak Services	62

World-Famous Brownie Cameras...

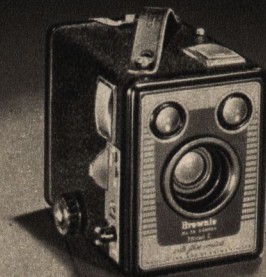


SIX-20 model D

So easy to operate — just aim and shoot. Reliable Kodak lens is recessed for protection and to minimise lens flare; it gives crisp, bright pictures and assures sharp focus for close-ups at 3 feet as well as distant views. Modern push-button shutter has “time” and “instantaneous” settings and is flash synchronised for use with the Kodak Flashholder. Loads with Kodak 620 film for eight pictures, $2\frac{1}{4}$ by $3\frac{1}{4}$ in.

SIX-20 model E

Greater picture-making scope is provided by a built-in portrait lens for close-ups, and a built-in yellow filter for producing better tonal values and striking cloud effects. This model includes all the features of the Model D plus a shutter release safety lock, and screw socket for cable release. Makes eight exposures, $2\frac{1}{4}$ by $3\frac{1}{4}$ in., on Kodak 620 film.

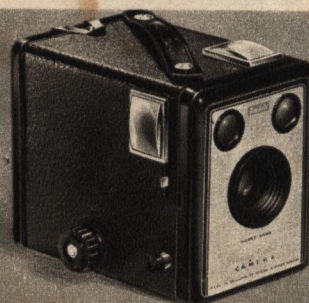


SIX-20 model F

De luxe member of the Brownie family, the Brownie “F,” retains the best features of Model “E” plus smart beige leatherette covering; ivory plastic fittings; japanned brown enamel front plate; tripod socket and handy carrying strap. Loads with Kodak 620 film for eight pictures, $2\frac{1}{4}$ by $3\frac{1}{4}$ in.

SIX-20 model I

Ideal for the beginner, the new Brownie Model I has a top quality fixed-focus Kodet lens, dependable push-button shutter for instantaneous or brief-time exposures, and two extra large viewfinders — so clear, brilliant and easy to see. Sound metal construction throughout. Makes eight $2\frac{1}{4}$ by $3\frac{1}{4}$ in. pictures on a Kodak 620 film.



Modern Popular Snapshooters...

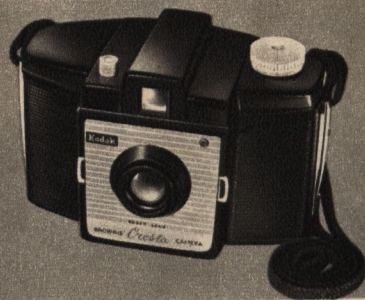


BROWNIE 127 camera

A smartly designed up-to-the-minute snapshot camera that is so simple and consistently dependable in use. It has an all-moulded body in glossy black plastic, smart etched-metal nameplate, large built-in optical eye-level viewfinder that permits quick sighting with perfect ease, dependable fixed focus Kodak lens, modern push-button shutter release, and strong neck cord. These features make the Brownie "127" ideal for the youngster just beginning photography. Loads with Kodak 127 film for eight pictures $1\frac{3}{8}$ by $2\frac{1}{2}$ in.

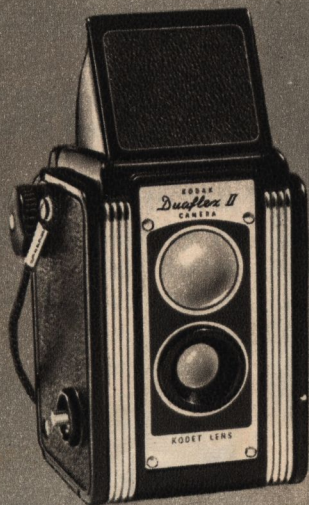
BROWNIE CRESTA camera

Modern styling and simplicity in use make the Brownie Cresta outstanding in its class. It features a shutter speed of one-fortieth of a second, flash contacts, close-up lens, yellow filter, tripod socket, sharp fixed-focus Kodet lens, and woven rayon neck strap. Loads with a Kodak 120 film to make twelve pictures, $2\frac{1}{4}$ by $2\frac{1}{4}$ in.



BROWNIE REFLEX

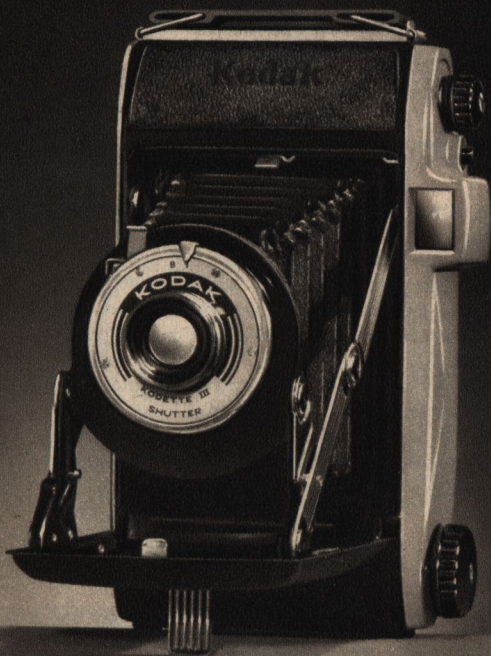
Has crystal clear hooded viewfinder almost as big as the picture itself. Modern push-button shutter is flash synchronised for use with the Kodak Flashholder. Gives twelve pictures, $1\frac{3}{8}$ by $1\frac{3}{8}$ in., on Kodak 127 film.



KODAK DUAFLEX II

A new and improved model of a great favourite. The viewfinder now has a fold-up metal hood to shield the light from the finder; it is also possible to use the camera at eye level. Metal body, crisp Kodak lens, handy neck cord. Gives twelve pictures, $2\frac{1}{4}$ by $2\frac{1}{4}$ in.

Six-20 KODAK JUNIOR cameras . . .

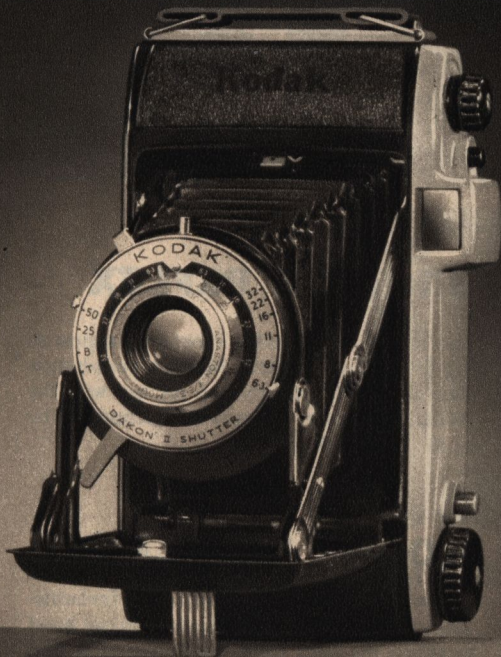


Junior I:

The lightest, smartest, most inexpensive folding camera on the market. It has a Kodak single meniscus 105mm. lens giving sharp pictures from 8 ft. to infinity; Kodette III shutter for brief-time and instantaneous exposures; plunger-type release and built-in socket for cable release; streamlined leatherette-covered metal body; optical eye-level viewfinder; rigid self-erecting struts; tripod socket; and plastic carrying strap. Weight 17 ozs. Loads with Kodak 620 film for eight pictures, $2\frac{1}{4}$ by $3\frac{1}{4}$ in.

Junior II:

An inexpensive yet elegant-looking camera that will take large crystal-clear pictures. The Kodak Junior II has all of the features of the Junior I plus: "Lumenized" 105mm. Kodak Anaston f/6.3 lens with apertures to f/32, and focusing from 4 ft. to infinity; Dakon shutter with pre-setting lever and speeds of 1/25, 1/50 sec.; flash-synchronised for use with Kodak Flashholder; depth-of-field scale built into the lens mount; spring-loaded spool chambers for easier loading. Loads with Kodak 620 film for eight pictures, $2\frac{1}{4}$ by $3\frac{1}{4}$ in.





Kodak **STERLING** camera

Sterling by name, by nature, by worth. Its trim design and elegance are matched only by its thoroughness and performance. The Kodak Anaston 105mm. f/4.5 lens with front-element focusing is capable of taking needle-sharp pictures from 3½ ft. to infinity. Its famous Pronto shutter is speeded from 1/25 sec. to 1/200 sec. plus brief-time and built-in delayed action device. Flash synchronisation is also built-in to accept the Kodak Flashholder Model 2 for use with both

class F and M flashbulbs. Body shutter release is smoothly actuated by a gentle pressure on the red button; provision has been made to accept a cable release. Optical eye-level viewfinder is built into a neat plastic housing. Self erecting front glides smoothly into position and strong struts ensure rigidity. A safety lock prevents accidental exposures. Retractable spool spindles give trouble-free loading. Loads with Kodak 620 film for eight pictures, 2¼ by 3¼ in.

KODAK

Retina

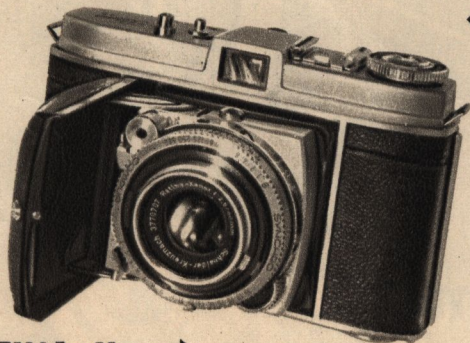
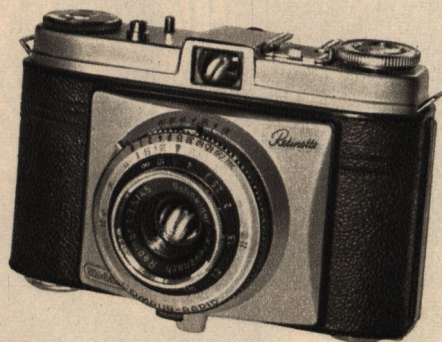
cameras...

outstanding leaders in the field of economical top-quality miniature photography . . . each providing a complete camera system at a price you can afford.

In the 20 years since its inception the RETINA camera has developed into a leading camera of its class and has thoroughly proved its robustness, reliability, and versatility all over the world. But technical development never stands still. Out of the sum of many years' development grows new knowledge which finds practical application in new designs. Thus the new RETINA has been perfected into a miniature camera with new pioneering features, increased versatility and many proven advantages.

RETINETTE ▶

"Baby" of Retina group bringing top-quality economical 35mm. photography within the reach of all. High quality Schneider-Reomar 45mm. f/3.5 coated lens gives accurate colour correction and high resolution. Newly designed flash-synchronised Compur-Rapid shutter has ten speeds from 1 to 1/500 sec. and "B." Rapid lever wind is coupled to set shutter, count exposures, and prevent double exposures.

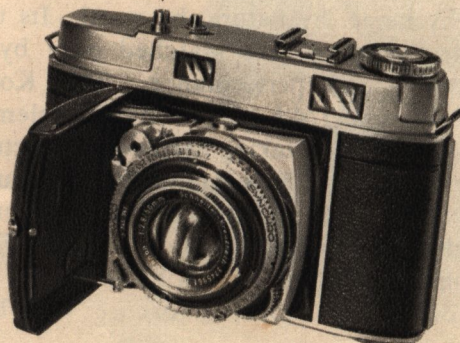


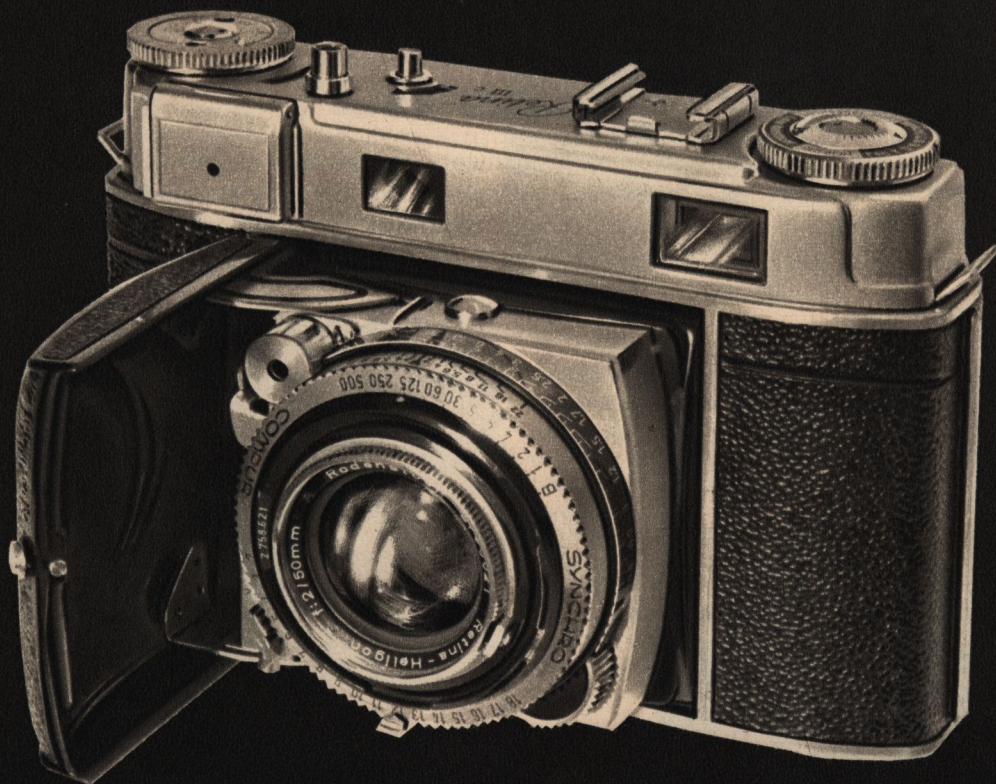
◀ **RETINA Ib**

Outstanding in performance, exquisite in design and finish the Retina Ib has: four-element Retina-Xenar 50mm. f/2.8 coated lens, 10-speed Synchrono-Compur shutter, an ingenious new "light values" system, a rigid yet collapsible lens panel, built-in self timer, and a mirror-frame viewfinder that shows the correctly outlined picture area plus extra margins for easier composing.

RETINA IIc ▶

Provides the long-awaited ideal solution to using interchangeable lenses without sacrificing the between-the-lens shutter. Fitted with a 6-element Retina-Xenon C 50m. f/2.8 coated lens the front component of which is removed to accept wide angle and telephoto lenses. Has a built-in coupled rangefinder, 10-speed Synchrono-Compur shutter, "light values" system, coupled shutter speed and aperture settings, and built-in self timer. The Retina IIc is truly a snug handful of camera craftsmanship.





the magnificent RETINA IIIc

The pinnacle of perfection in miniature camera production, offering absolute precision and unlimited versatility. The Retina IIIc possesses all the advantages of the IIC plus: a critically sharp 6-element Retina-Xenon C 50mm. f/2 lens which is specially coated (same as Retina IIC) to produce absolute colour values with Kodachrome film; a built-in shockproof photo-electric exposure meter with two light scales to cover an unusually wide measuring range. Readings are made in the new and simplified "light values" system which speeds up camera operation and eliminates the bother of individual shutter and aperture settings. In short, the Retina IIIc is an outstanding and unique advance in miniature camera precision.

the Retina System

Kodak Retina cameras as equipment are precision instruments capable of producing a lifetime of top-quality pictures. But even more appealing to the critical photographer is the well-integrated system of photography built around these fine miniatures. In addition to the long-focus and wide-angle lens components other photo aids have been designed to give the Retinas a broad photographic scope.

Some of these attachments are: The Retina Lens Hood, Retina Close-Up Lenses; Retina Frame Finders, models B and C for shooting fast-moving subjects; Retina Optical Multiple Finder which shows the exact picture area when

using telephoto or wide-angle lenses; Kodablitz Flash Gun; Retina Screw-in Filters; Retina Table Stand; Retina Document Copying Stand; Kodalux L Exposure Meter; Wide-Angle and Telephoto lenses; and the Retina Stereo Attachment which turns the Retina into a "3-D" camera by giving it two "eyes." Finally, the Retina Micro-Adapter extends the scope of the Retina to photomicrography. It can be used with any Retina with a coated standard lens — thus providing doctors, chemists, biologists, technologists, etc., with an amazing tool to widen the range of their professional and scientific work.

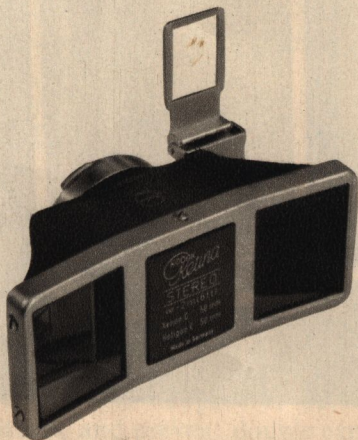
Retina accessories

Retina cameras are magnificent precision instruments on their own . . . but with the addition of one or more of these Retina accessories new fields of photography are opened up to you, the amateur photographer, as well as to the scientist, naturalist, physician or industrialist. Like the Retina cameras, all accessories are designed and finished with the utmost precision.

Retina Filters

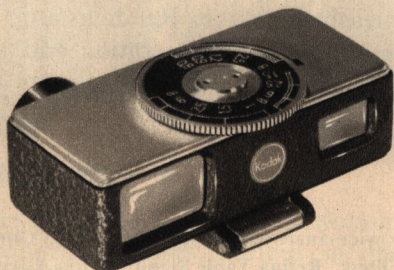
(Not illustrated.) Specially produced in a range of screw-in mounts for Retinette and Retina cameras including those to

fit wide-angle and telephoto lenses. In a range of medium yellow, red, ultra-violet, skylight, photoflood, and daylight (for Type A Kodachrome film).



Retina Stereo Attachment

Can be fitted to the standard lens of the Retina IIc or IIIc in a matter of seconds, making the camera "see" in three dimensions. It records two vertical images on a standard 35mm. frame which, when viewed, are three dimensional and amazingly life-like. Excellent for scientific and technical work.



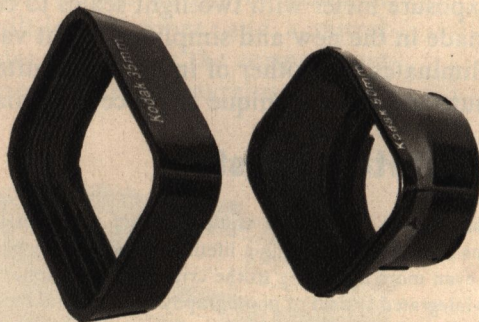
Retina Close-Up Rangefinder Kit

Extends the focusing range of the camera down to 12 inches. Kit consists of a super-imposed type of rangefinder combined with a parallax-correcting viewfinder, two supplementary lenses, and a fitted case. Once the object is sighted the finder is adjusted until the two outlines fuse into one. The focusing disc then indicates supplementary lens to be used and the distance. Fits into the accessory shoe on the camera.



Kodablitz Flash Gun

Kodablitz is powered by a 22.5 volt dry battery which will also power two to three extension units. The grained surface of the reflector is designed on the latest advances in light technique to ensure the maximum efficiency and give a powerful yet diffused flash of light. Fits accessory shoe on camera. Has press-button release for used bulbs.



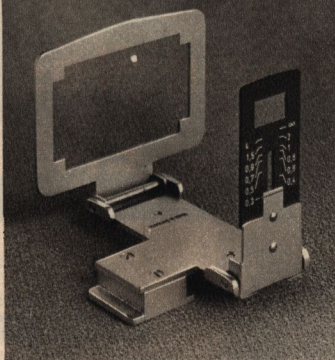
Retina Lens Hood

The rectangular shape of the lens hood for the Retina IIIc, IIc, and Ib is particularly effective in screening off disturbing reflections. It is firmly fixed in front of the standard lens of the camera by means of a bayonet mount. An accessory hood may be slipped over the front for shots made with the wide-angle lens.



Retina Micro-Adapter

Joins camera and microscope together to form an excellent unit for photomicrography. Incorporates semi-reflecting prisms, plus a monitoring eyepiece to allow visual focusing, depth-of-field control, as well as inspection during exposure. The scale of reproduction is one fifth of the visual image.



Retina Frame Finder

Specially designed for shooting moving subjects and quick-changing scenes such as sports pictures. In two models to suit standard and telephoto lenses — both have parallax compensation down to a taking distance of 12 inches and thus can be used for close-ups with supplementary lenses.

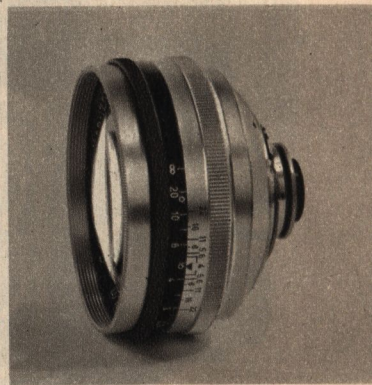
Retina Copying Stand

Is a lightweight collapsible stand for copying books, documents, etc., up to $11\frac{1}{4} \times 8\frac{1}{2}$ in. Must be used in conjunction with the N2 supplementary lens. Provision has been made for the fitting of supplementary lighting in the form of two reflectors on movable arms.



Telephoto and Wide-Angle Lenses

In use, each replaces the front component of the lens on the camera. The telephoto lens (illustrated) is the Retina Longar-Xenon C 80mm. ($3\frac{1}{8}$ inch) f/4 lens — excellent for close-ups of distant subjects. The wide-angle lens is the Retina Curtar-Xenon C 35mm. ($1\frac{3}{8}$ inch) f/5.6 lens — for subjects embracing a wide angle of view.



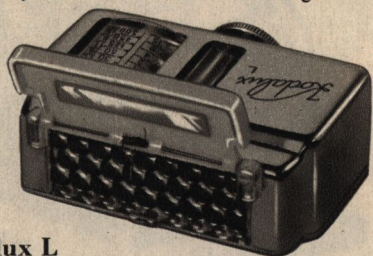
Retina Optical Multiple Finder

An enclosed-type optical viewfinder which shows the exact picture area when using telephoto or wide-angle lenses. Has parallax adjustment for accurate framing. Fits into clip on camera.



Retina Close-Up Attachment

Together with its supplementary R lenses this attachment employs the focal-frame method of close-up photography of tiny subjects at distances of 6 to 11 inches — no measuring of distance is necessary as the adjustable 4-position frame does it for you. Four different sizes of subject areas covered by R lenses are: 4×6 in.; 3×4 in.; 2×3 in.; and $1\frac{1}{2} \times 2$ in.

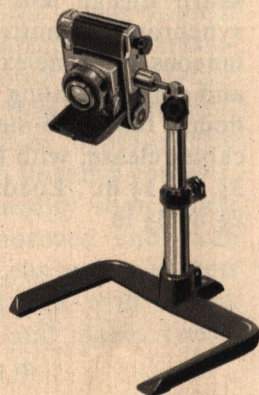


Kodalux L Photo-Electric Exposure Meter

Gives readings in the new "light values" system as well as the corresponding shutter speed and aperture. Hinged diffusing screen permits accurate reading in both incident and reflected light. Also fits into clip on camera. With leather case.

Retina Table Stand

Designed especially for accurate close-up work — excellent for use with the Close-Up Rangefinder (and N lenses) or the Close-Up Attachment (and R lenses). Has rigid base, telescopic column, ball-and-socket head, and a right-angle head.



Popular favourites from the range of world-famous ENSIGN cameras...

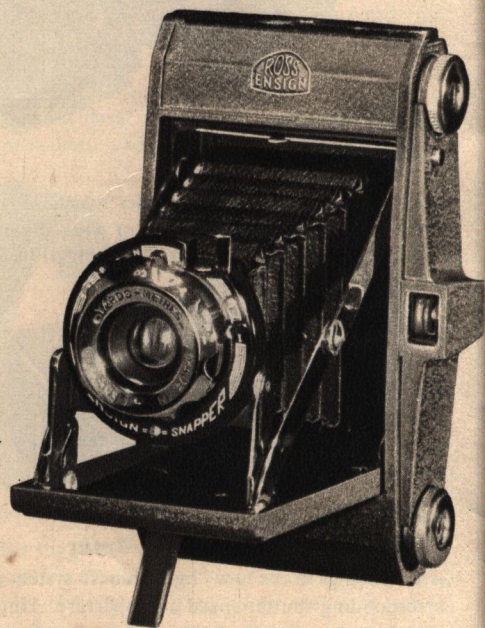


Ensign Ful-Vue Super

Everybody can make good pictures with this super model of the famous Ful-Vue camera. It is cleverly designed to simplify picture-making and yield crisp, clear satisfying snapshots — thanks to the fold-in hood and giant size viewfinder which shows your picture in almost finished-print size. Its quality Ensign lens can be adjusted to take close-ups as well as distant views. The shutter sets itself and is synchronised for flash photography. The body is precision die-cast in metal and weighs only 16 ozs. Other features are: easy-to-load film chambers; safety cover over ruby window; tripod socket; plaited neck cord. Takes twelve pictures, $2\frac{1}{4}$ by $2\frac{1}{4}$ in., on Kodak 620 film.

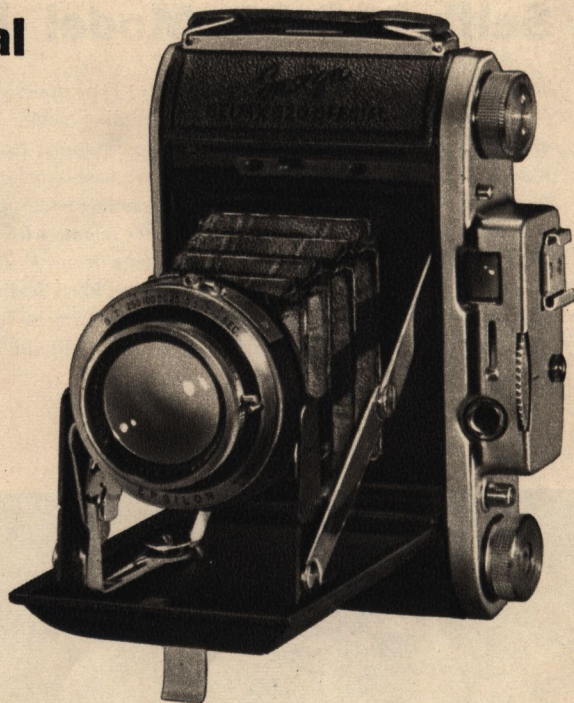
Ensign Snapper

Popular beginner's choice — easy to use, dependable in action, sturdy in make, handsome in appearance. Features are: Needle-sharp Ensign lens focusing from 2 yards to infinity; flash-synchronised shutter for indoor photography as well as instantaneous and time exposures; exposure control settings for bright and normal lighting conditions; handy optical direct-vision viewfinder; robust all-metal body with grey crystalline finish; accepts cable release; with built-in tripod socket; dimensions are $6\frac{1}{4}$ by $3\frac{3}{4}$ by $1\frac{1}{2}$ in. Loads with Kodak 620 film for eight pictures, $2\frac{1}{4}$ by $3\frac{1}{4}$ in.

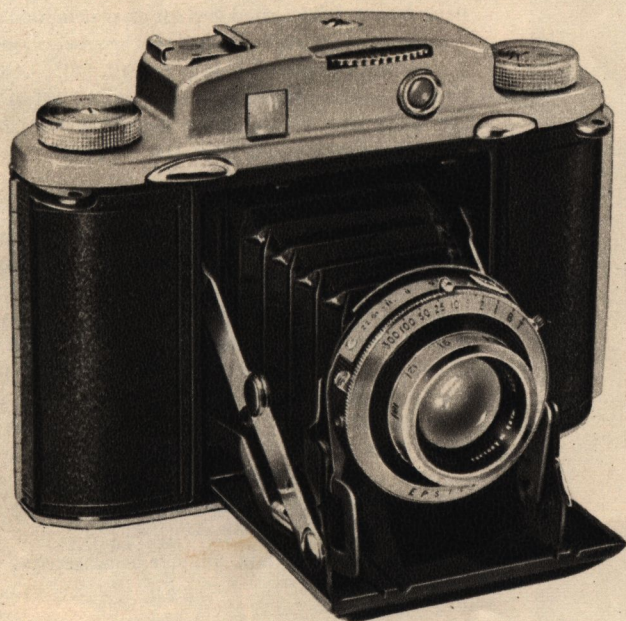


Ensign Selfix 820 Special

Tops for really serious picture making, the Selfix 820 Special features a 105mm. Ross Xpres f/3.8 colour corrected and coated lens fitted into an Epsilon shutter with speeds from one to 1/250 sec. with Bulb and Time. Also incorporated are: built-in synchronisation for electronic or expendable flash; uncoupled rangefinder and viewfinder combined (latter is adjustable for $2\frac{1}{4} \times 2\frac{1}{4}$ in. pictures); double exposure prevention device; accessory shoe; built-in depth-of-field calculator. It has a pressure die-cast aluminium body and a lens mount to take 42mm. filters. Loads with Kodak 620 or 120 film and makes twelve pictures, $2\frac{1}{4}$ by $2\frac{1}{4}$ in., or eight pictures, $2\frac{1}{4}$ by $3\frac{1}{4}$ in.



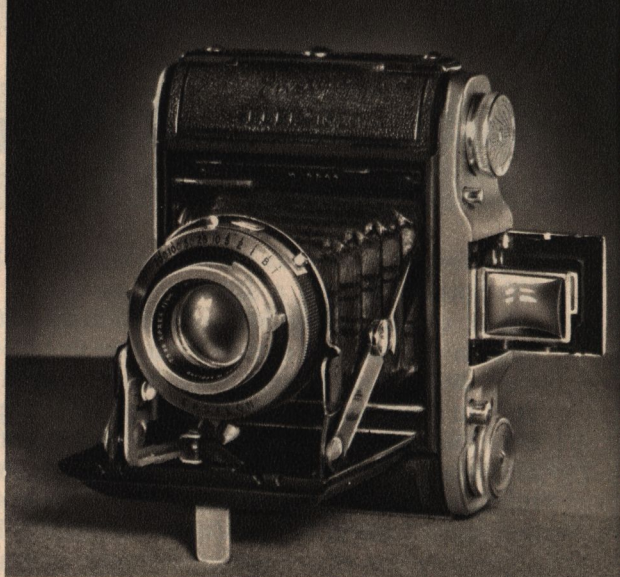
Ensign Selfix 12-20 Special



Streamlined to fit snugly into the hands. Its 75mm. Ross Xpres f/3.5 colour-corrected and coated lens is a favourite with exhibition minded fans. Built-in rangefinder and viewfinder combined permit easy composing and needle sharp focusing. Its reliable eight-speed Epsilon shutter has speeds from one to 1/300 sec. with Bulb and Time — has internal synchro-flash contacts for expendable and electronic flash. Other features are: double exposure prevention device, built-in depth-of-field scale; streamlined fingertip controls; safety cord, accessory shoe, finest quality black morocco and satin chrome finish. Lens mount accepts 32mm. filters. Loads with Kodak 120 or 620 film and makes twelve pictures, $2\frac{1}{4}$ by $2\frac{1}{4}$ in.

Selfix 16-20 Model II

There's quality-plus packed into this model. Tops in design and performance the Selfix 16-20 assures sparkling negatives for crisply detailed "big ones." Just check these popular features: Ross Xpres 75mm. f/3.5 coated lens; 8-speed flash-synchronised Epsilon (1 to 1/300) shutter; built-in streamlined self-opening Albada-type viewfinder; interlocking shutter release with warning indicator; depth-of-focus scale; focusing from 4½ feet to infinity; a strong metal body with fine grained black leatherette covering. Truly the Selfix 16-20 is the ideal camera for the advanced enthusiast. Loads with Kodak 620 or 120 film for 16 pictures, 1½ by 2¼ in.



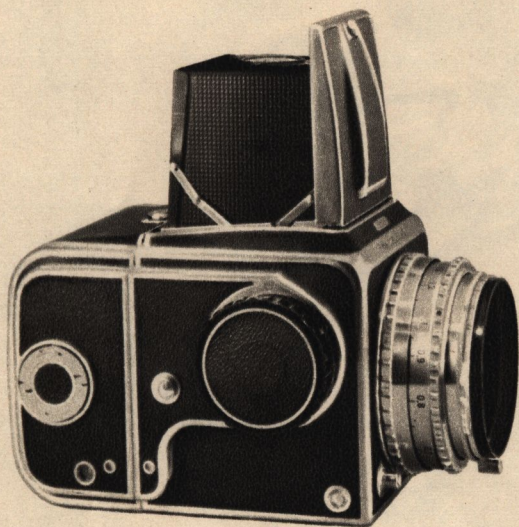
Flexaret Model IV

The reflex with "expert" capabilities — will get the pictures you want easily and quickly, without doubts and without guesswork. It is a popular choice in the miniature reflex field particularly amongst advanced workers — that speaks for itself. It is fitted with a sharp-cutting Meopta Belar 80mm. f/3.5 coated lens for clear definition and fine tonal separation, while its flash-synchronised Prontor-SVS shutter has speeds of 1, ½, 1/5, 1/10, 1/25, 1/50, 1/100 and 1/300 sec., plus "brief-time" and a built-in delayed action device. A magnifying lens built into the hood ensures critical focusing from 3½ ft. to infinity.

Additional features to the previous model are: New device to prevent double exposures; no film window — only automatic counter; more efficient focusing hood which folds up in one movement — can also be adapted for eye-level viewing; new depth-of-focus scale attached to focusing lever; new shutter release lever attached to body of camera; cable release socket; improved film loading; film pressure plates in back and bottom of camera; strengthened closing and opening device; lens cap to cover both lenses. With strong leather always-ready carrying case for comfort and protection. Takes twelve pictures, 2¼ by 2¼ in. on Kodak 120 film.

Model IVa, with 35 mm. adapter back, arriving shortly.



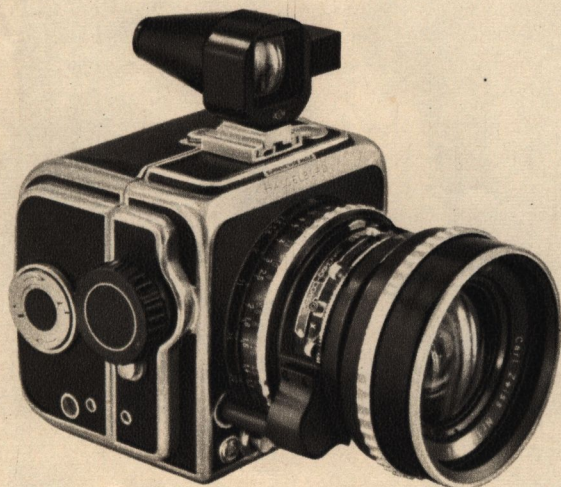
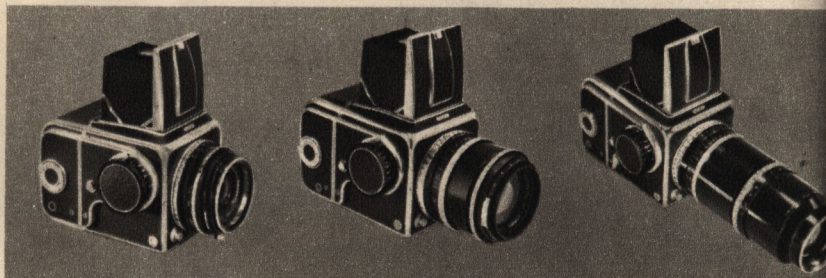


1000F

The Hasselblad's unique design, technical excellence, and great versatility which are truly unmatched make it ideal for both advanced amateur and professional use. The 1000F has single-lens reflex viewing and is fitted with a Zeiss Tessar 80 mm. f/2.8 lens. Roll film magazines can be changed in the middle of a film with perfect safety — an exposure counter controls the number of exposures. A single knob dials the desired shutter speed, sets the shutter, and advances the film in one operation. Stainless steel focal-plane shutter ranges from 1 to 1/1000 sec. with B. Loads with Kodak 120 film for 12 pictures, 2¼ by 2¼ in.

Interchangeable Lenses

(Left to right.) Zeiss Distagon Wide-Angle 60mm. f/5.6 lens — for interiors, narrow streets, etc.; Zeiss Sonnar 135mm. f/3.5 lens — for telephoto shots of sports, news, etc.; Zeiss Sonnar 250mm. f/5.6 lens — super long-focus lens for extra close-ups of nature, wild-life, distant objects, etc.

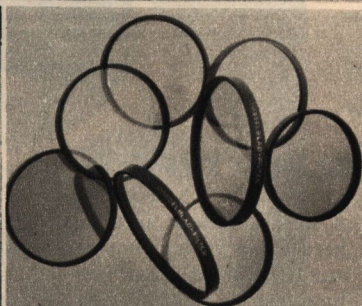
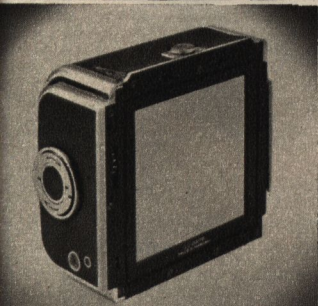
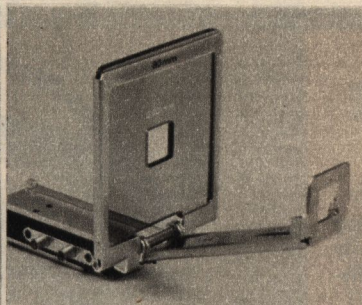
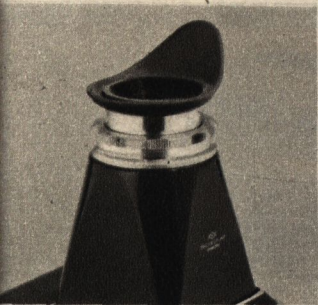


Superwide

A sensation in modern camera manufacture to delight technically-minded photo enthusiasts. It is the only 2¼ by 2¼ in. camera that provides high-speed picture-making covering an angle of 90 degrees. It is equipped with a Zeiss Biogon 38mm. f/4.5 lens, and a Synchro-Compur shutter with speeds ranging from 1 to 1/500 sec. with B and automatic release. Lens is corrected for every possible distortion even at full aperture. Camera is supplied with a prism-type viewfinder which has a built-in spirit level to assure perfectly accurate verticals and perspectives without the aid of a tripod. Permits the interchanging of roll-film magazines at any time. Takes 12 pictures on Kodak 120 film.

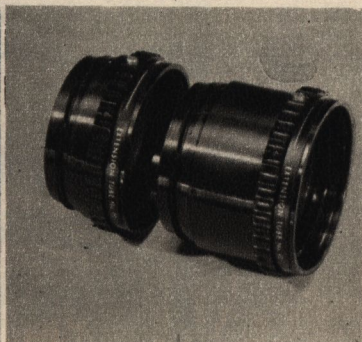
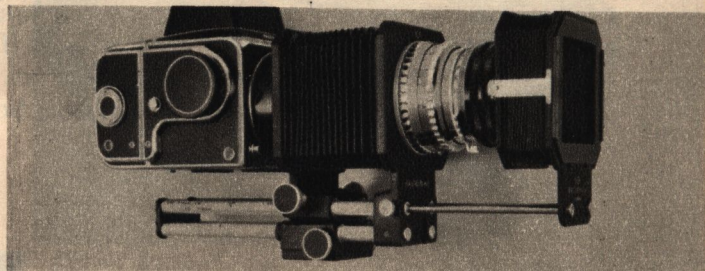
HASSELBLAD

accessories



(Right) Extension Bellows

The body of the camera and the bellows extension together form a close-up unit permitting the lens to be extended from 75mm. to 250mm. (scale is graduated in centimetres). Special scale indicates change in exposure occasioned by the extension. Invaluable for scientific work.

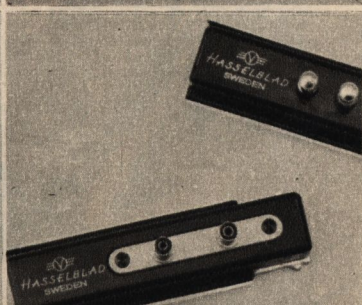
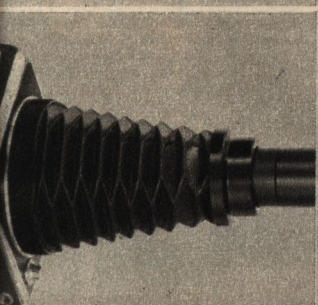


(Top left) Remote Control Shutter

Especially designed for the wild-life photographer — once the camera is set in position this ingenious device activates the shutter by remote control. This can be done at any distance up to 50 yards by a simple pulling action.

(Top right) Extension Tubes

In two sizes. The No. 20 used with the standard 80mm. lens permits close-ups from 14 to 20 inches from the film plane; the No. 40, from 13 to 14 inches; used together, from 12.6 to 12.9 inches or same size. Includes tables for 80mm. and 135mm. lenses.



(Lower left) Microscope Adapter

Permits photographic recording of scientific observations in microscopic work. Forms the link between the camera and the microscope and consists of bellows fitted with connecting rings. Light-proof bellows assure easy connection.

(Lower right) Contact Shoe

In two types. Both fit the accessory bracket on the side of the camera to provide perfect synchronisation for either "strobe" or flash photography.

Your valuable camera deserves the protection of an AUSTRAL LEATHER CARRYING CASE

Check these . . .

BOX TYPE:

Add years to the life of your box Brownie camera by protecting it from dust, moisture, shocks, etc., with one of these sturdy carrying cases. Made of quality grained leather to last a lifetime. With carrying strap and metal catch.



SLING TYPE:

A slippery rock or an unexpected protruding stump and you're headed for trouble. But your camera is safe . . . thanks to its sturdy Austral Leather Carrying Case which keeps it snug and protected. Moreover, a case adds years to a camera's life . . . for it is designed and constructed to take the hardest knocks. This model fits Kodak Junior I and II, Kodak Sterling and similar cameras. Also available is a selected range of always-ready type cases for such cameras as the Brownie Reflex, Ensign Ful-Vue Super, Ensign Selfix 12-20, Ensign Autorange 16-20, and Kodak Retinette and Retina cameras.



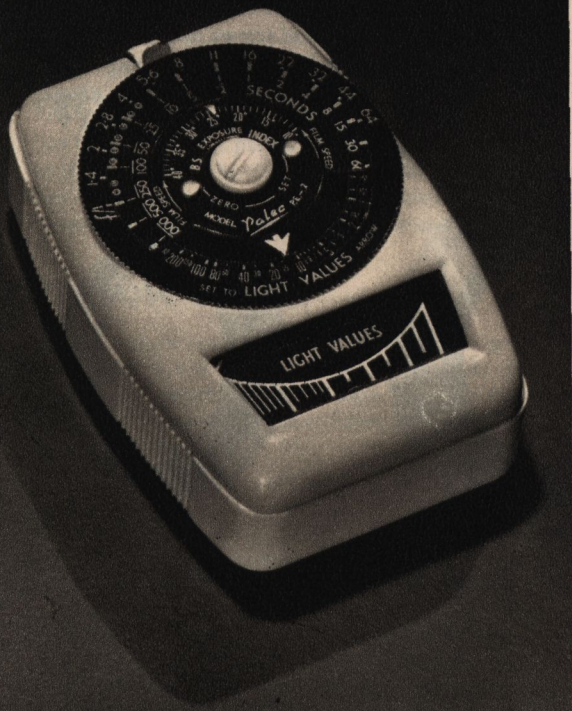
KODAK DE LUXE SHOULDER BAG

No finger-smear filters, no dust-covered lens hood, plenty of film and flash bulbs, everything clean and safe — that's the story told by owners of these famous little gadget bags. It's made throughout from the finest durable leather hide, and is finished in soft natural tan. Contains movable compartments for camera, meter, etc., while inside the lid is a zippered pouch for filters, etc., as well as a buttoned-in soft chamois for last minute cleaning. Has roomy exterior pouch, adjustable strap, protective studs underneath to avoid scratching or dampness. Also available in a larger senior model.



PHOTO-ELECTRIC AND VISUAL Exposure Meters

PALEC PE2 (Photo-Electric)

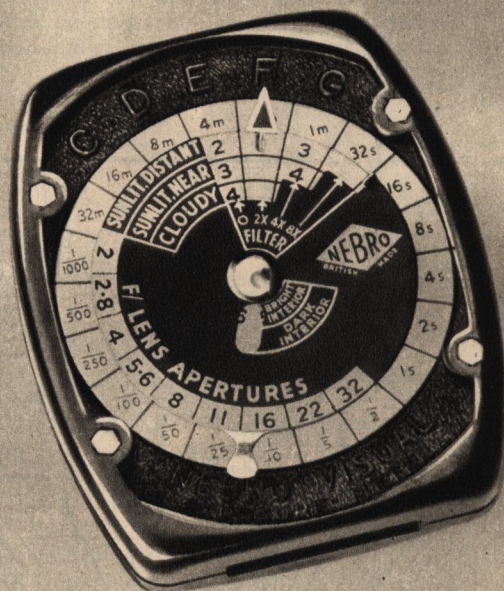


Whether it be day or night... indoors or outdoors... you are assured of exposure accuracy when using a P Alec meter — thanks to its dual range sensitivity, its modern Megatron Selenium photo-electric cell of unlimited life, and its P Alec sapphire-jewelled meter movement.

The sensitivity of the photo-electric cell permits the P Alec to cover shutter speed exposures from 1/1000 of a second to 60 seconds and f. stop numbers from f/1 to f/64 (f/3.5, f/4 and f/4.5 ranges), whilst all film speeds are expressed in A.S.A. Exposure Index ratings from 1 to 650 (Scheiner 14/42). Equally efficient is the P Alec's adaptation for use with movie cameras, in that it registers speeds from 8 to 96 frames per second. All moulded in a strong durable plastic, the P Alec is supplied complete with a cord, carrying case, and instruction booklet.

NEBRO (Visual)

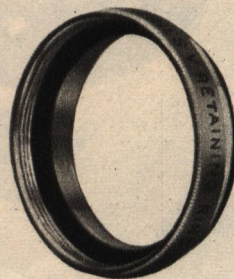
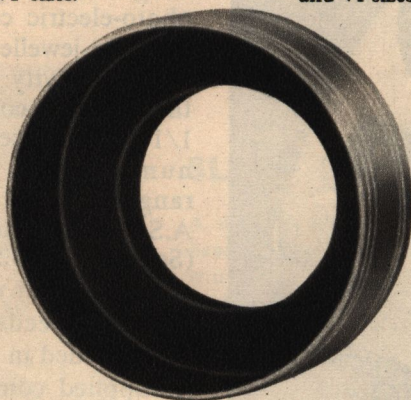
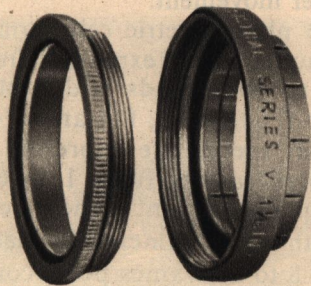
Once you've used it you'll never be without it... because it's so reliable and comprehensive. Attractively shaped and finished in black plastic and nickel, the Nebro is a standard extinction type meter fitted with a graduated step wedge for taking the light readings. On the back of the meter is a table showing the comparative film speeds in five popular ratings. Also provides for exposure adjustment when using filters. Complete with sturdy tan leather case with strong press-stud catch.



Kodak Lens Attachments make your camera a better camera

Kodak Adapter Ring

The basic unit to widen the scope and efficiency of your camera — permits the ready exchange of numerous unmounted filters and auxiliary lenses. Comprises two parts: an adjustable Adapter Ring and a Retaining Ring — each accurately made in strong lightweight metal alloy. Has slip-on mount with adjustable prongs. Available in Series V and VI sizes.



Kodak Lens Hood

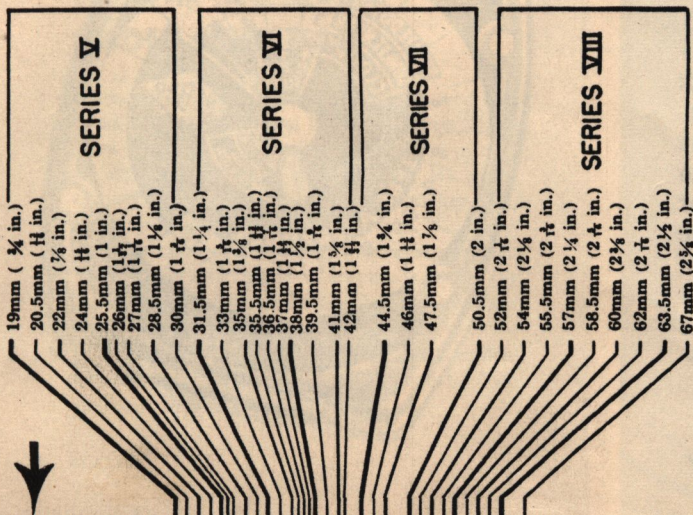
Just as you would shade your own eyes from sun glare and reflections, so does the Kodak Lens Hood protect your camera lens. In use, the Kodak Lens Hood screws into the Kodak Adapter Ring, and replaces the Retaining Ring of that unit. Strongly made of lightweight alloy — dull-blacked inside. Available in Series V and VI sizes.

Kodak Retaining Ring

Should you wish to use more than one lens attachment for one exposure — say a filter, a close-up lens and a lens hood — the Kodak Retaining Ring becomes the “connecting link” to bind all these units into one complete assembly. Inside and outside threads ensure a safe snug-fitting assembly. Available in Series V, VI, VII and VIII sizes.

Austral Close-Up Lenses

(Not illustrated.) Slip one of these handy lenses into a Kodak Adapter Ring and you'll have a new field of picture-making just waiting for your camera — this includes portraits of people and close-up photography of animals, flowers, etc. Austral Close-Up Lenses are made from fine quality glass in three degrees of magnification (+1, +2, and +3). Sizes available are 32 mm. (to fit Series V Adapter Ring) and 42mm. (to fit Series VI Adapter Ring).



HOW TO ORDER KODAK LENS ATTACHMENTS

To obtain the diameter of a lens mount, lay the scale at left across the centre of the lens, with the arrow touching the outside edge of the lens mount. The line which touches the outside edge of the mount directly opposite then indicates the Kodak Adapter Ring size in inches and the series number of all Kodak Lens Attachments for that lens. If no listed size offers an exact fit, select the next largest size. The clamp prongs can be bent slightly to grip the mount.

Add punch to your pictures with Austral Filters

Whatever your picture-making interests there is sure to be an Austral filter to help you . . . for filters dramatise pictures, give them a fresh sparkle and a new emphasis. As the name implies, the action of a filter is to retard light of certain colours—hence the tonal contrast is increased and the resulting picture greatly improved. Available in 31, 32, 38, 42 and 53 mm sizes.



YELLOW

Just the filters to put punch into your pictures . . . they snap up the cloud effects by darkening the blue tone of the sky . . . they give certain degree of haze penetration in distant and mountain scenes. Available in light yellow and medium yellow.

YELLOW-GREEN

An ideal compromise between a yellow and a green filter. Here's what it will do for you: darken the sky for better cloud effects, penetrate distant haze, improve foliage and grass by rendering them lighter. Especially suitable for beach or garden photography.

GREEN

You will like the Austral Green Filter for what it will do for you in landscape, garden, and flower scenes where large masses of green foliage tend to dominate the picture—it lightens the greens and improves their detail; it will also darken the tone of blue sky and emphasise your cloud effects. Should be used only with panchromatic emulsions.

ORANGE

For striking vigour and contrast particularly with panchromatic emulsions. Gives slight over-correction resulting in really beautiful seascapes, where it darkens both sky and water. Excellent for light architectural subjects against blue skies and gives greater penetration of haze than yellow filters.

RED

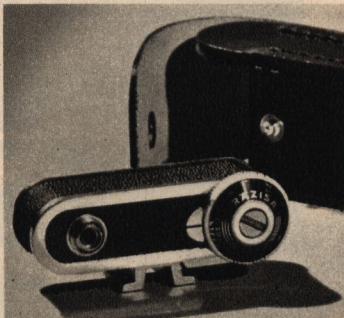
For the most dramatic and startling effects of all, the Austral Red Filter is tops. Its exaggerated renditions of darkened skies are truly spectacular, particularly when the elements are blue sky, white clouds, and strongly lit foreground. Slight under-exposure and over-printing will produce moonlight effects.

BLUE

The Austral Blue Filter (actually very pale blue) helps to produce improved tonal rendition and modelling by offsetting the excess yellow light normally associated with artificial lighting conditions. In this sense it is preferable for it to be used in association with panchromatic emulsions.



Aids to Better Picture Making...



Prazisa Rangefinder

Critically measures distance simply by sighting through the window and turning the circular scale until the two images of the subject are perfectly superimposed. Covers a range of distances from 2 feet to infinity. With sturdy case.

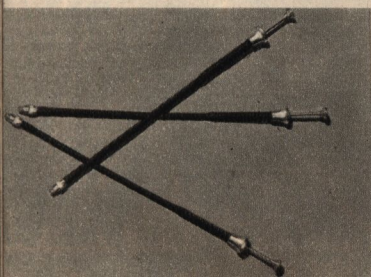
Braided Cable Releases

A 'must' for time exposures — their use minimises camera shake, and makes for better pictures. Strong and reliable. In a wide range of various lengths and threads.



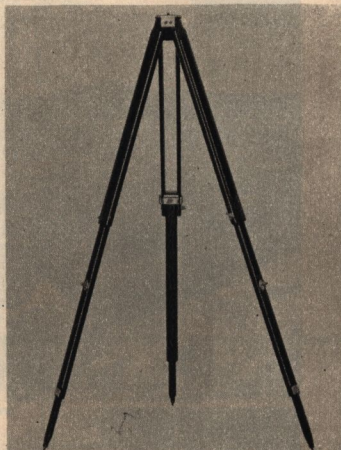
Austral Lens Cleaning Tissue

Ideal for cleaning that dirty lens, viewfinder, filter, etc. Finest quality white velvety-soft tissue that will not damage the surface. In books of 10 sheets.



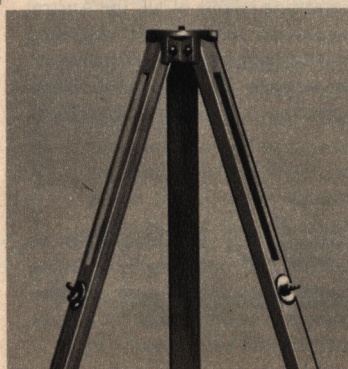
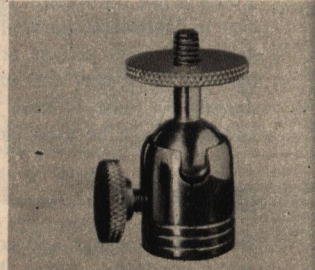
Zenith 3-Section Tripod

Zenith's screw collar-lock system enables the extension legs to be tightly gripped so that the tripod height covers an extension range of 19 to 44 inches from floor level; folds up into 21 inches. Attractively finished in glossy black varnish. Has solid aluminium head, spiked tips, standard thread, plastic strap. Weight 1½ pounds.



Barton Ball-and-Socket Tripod Head

May be attached to any tripod; the ball-and-socket head enables the camera to be tilted to almost any angle, thus facilitating subject selection and avoiding camera shake. Sturdily made in solid metal.



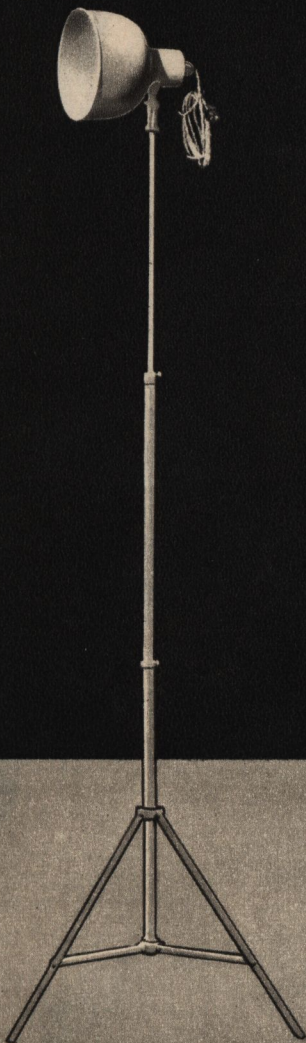
Zenith 2-Section Tripod

(Illustration shows top only.) Can be adjusted so that the tripod head can be used at any height between 26½ and 47½ inches from floor level. Folds up into 27¾in. In smart natural wood finish. Weight 1½ pounds. Otherwise, similar to 3-section model.



Floodlighting Equipment

to help you make fascinating indoor night snapshots at home



Barton Single Unit Reflector

An ideal all-purpose lighting aid for around-the-clock picture-making; is designed to bring the utmost simplicity to indoor photography. Of sturdy, light-metal construction throughout, with triple extension stand and folding tripod legs. The reflector is complete with screw socket fittings, six feet of flex and 3-pin plug. Additional reflectors on extension arms may be attached.

(A) Barton Spring Clamp Reflector

Will clamp on to anything thus permitting a full concentration of light in any direction, this by means of a ball-and-socket fitting. Fitted with B.C. lamp holder and built-in switch. Clamps are rubber-covered to prevent scratches.

(B) Barton Floor Light

Consists of a single reflector equipped with a standard E.S. socket, mounted on an adjustable upright; has rigid tripod base with rubber tips. Supplied with 6 ft. of flex and a 3-pin plug.

(C) Barton Junior Floodlight

Its adjustable stand and arm permit it to be directed wherever desired. It is compact, light in weight, and readily portable, with a highly-efficient all-metal reflector fitted with a B.C. lampholder, flex and plug.

(D) Barton 500-Watt Spotlight

Because of its light weight and narrow beam angle, this spotlight is suitable for close-ups and special effects. Has well-ventilated lamphouse; uses 240-volt 500-watt E.S. Floodlight Lamp on an adjustable base. Sold with or without stand.



(A) Barton Spring Clamp Reflector

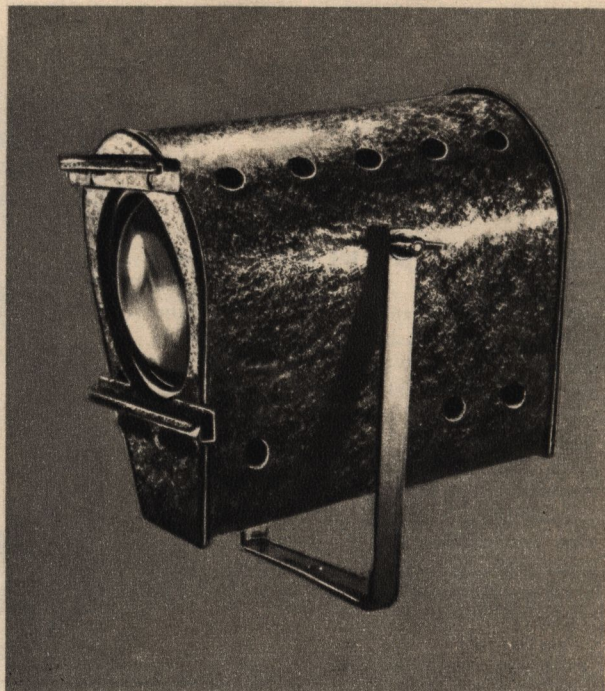


(B) Barton Floor Light

(C) Barton Junior Floodlight



(D) Barton 500-Watt Spotlight





is easy ...

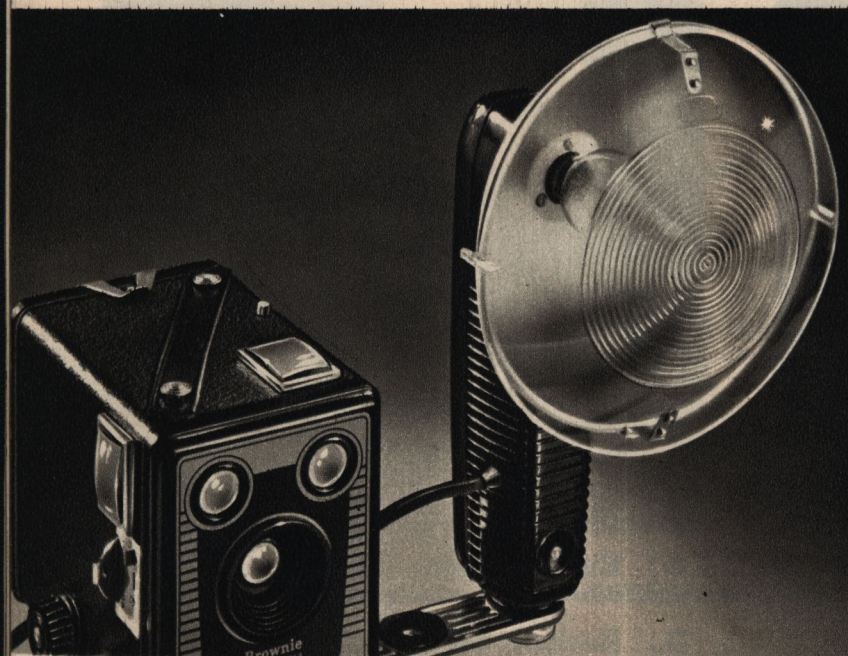


is fun ...

KODAK FLASHHOLDER

Model 2

Now you can follow the popular overseas trend of "flashsnapping" — the fun and pleasure of taking flash pictures anywhere, at any time. It's all so easy with a Kodak Flashholder which is designed to fit practically every camera with built-in flash contacts. The Kodak Flashholder comprises a smart glossy black plastic body with a lightweight aluminium reflector and a clip-on plastic diffusing screen. It accepts two Eveready 935 torch batteries and all flash bulbs with miniature bayonet caps, such as the G.E.C. No. 1 (with adapter) and the PF.14. It connects to the camera by means of a Kodak Flashholder Camera Bracket which screws into Flashholder and into the tripod socket on the camera. A Kodak Flashholder Cable (type to fit) then connects the holder to the flash contacts in the camera and provides perfect synchronisation.



PALEC G100 FLASH UNIT

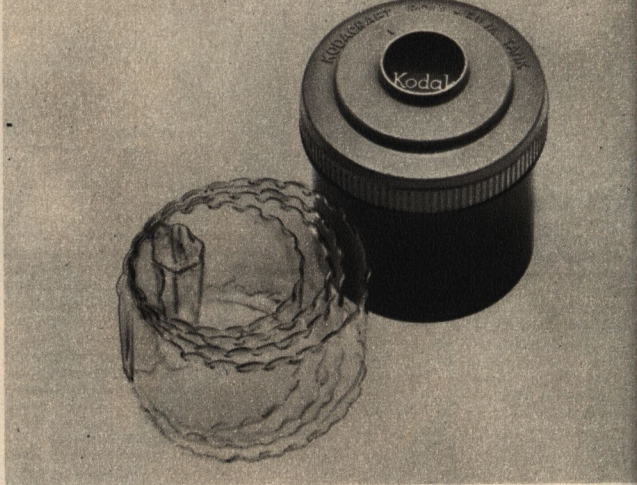
An extremely dependable low-voltage lightweight electronic flash unit giving the amazing performance of 1000 to 2000 flashes from each set of batteries. Extremely compact in size (8½ in. x 6 in. x 2½ in. with 6 in. reflector) and light in weight (5lb. 2oz. complete with batteries), the Palec G100 is amazingly portable. Attractively finished in iridescent hammergeglow lacquer and satin aluminium with solid leather case and padded shoulder strap. Available separately as accessories are: universal camera bracket; synchronising leads for various shutters.



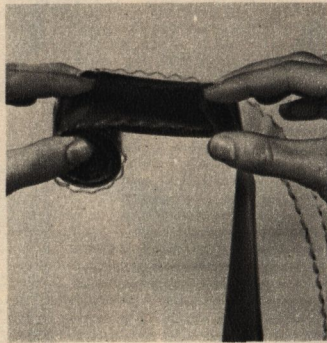


Kodacraft Roll-Film Tank with 620-120 apron

Provides the modern easy way to develop 620 and 120 roll films at home. Each film is simply rolled up in the apron in just a few seconds and placed in the tank which holds 16oz. of solution. All moulded in tough plastic. Both tank and apron are resistant to all normal photographic processing solutions. Here's how the tank is used:



1. Unroll the protective paper backing as far as the end of the film. With the film apron unrolled place the end of the film next to the looped end of the apron and carefully begin to roll the film into the apron.



2. Keeping a slight tension and holding both the apron and the film by the edges, roll the rest of the film into the apron. Be sure the edges of the film are flush with the edges of the film apron.

3. Lower the film and the apron into the developing tank and raise and lower them several times. Place the weight on the apron and put the cover on the tank. The lights can now be turned on.

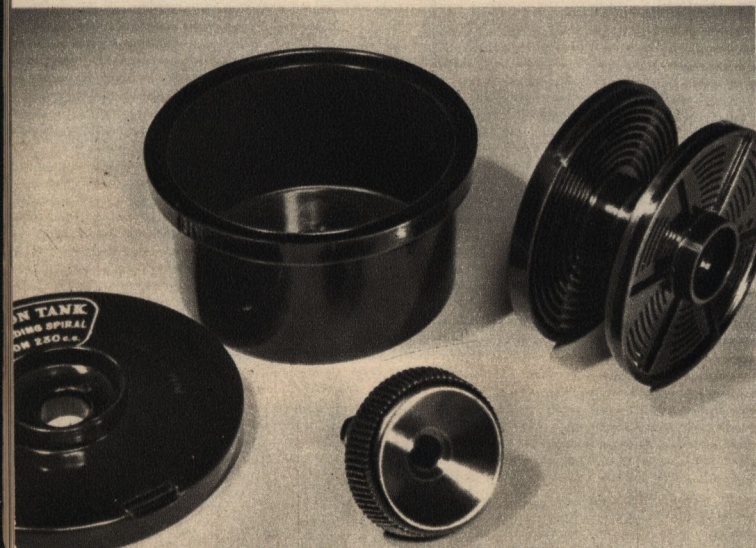


4. Agitate the film for about 10 seconds during every minute of the development time by moving the tank with a circular motion. After development, simply upturn the tank and pour out the developer — then complete processing in the normal manner.



Paterson "35" Developing Tank

British-made with a world-wide reputation for outstanding service and ease of operation — thanks to the unique self-loading spiral which enables 35mm. films to be loaded in a matter of seconds and with complete safety. Merely attach the end of the film and turn the spiral until the film is fully wound on — no pushing, no jamming, no finger-marks, no scratches. Loads wet film just as easily and quickly — ideal for colour processing. Moulded in sturdy black plastic — requires only 8½oz. of solution.





Kodak Photo-Finishing Kit

for developing and printing your own films

The fun you get out of taking pictures is doubled when you develop and print them yourself for developing and printing is so easy with the unique and money-saving Kodak Photo-Finishing Kit . . . and fascinating too. It contains all the materials required for the successful tray development of your Kodak films. This kit is unique in that the strong, all-moulded plastic base and lid actually become the processing trays — the base is divided into two compartments to contain developer and water respectively, whilst the lid holds the fixer. An electric ruby globe is available separately if you prefer to use it instead of the battery-type darkroom lamp.

The kit contains:

Processing trays, Kodak Universal M-Q Developer, graduated measure, stirring rod, thermometer, two film clips, Kodak Acid Fixer, Kodak Photo-Flo, Velox paper, printing frame, Kodak Printing Masks, darkroom lamp, and safelights.

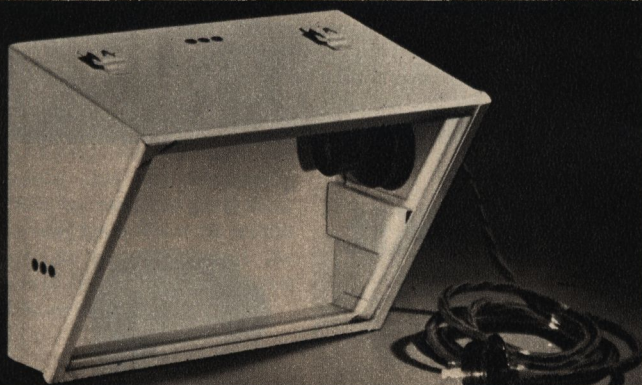
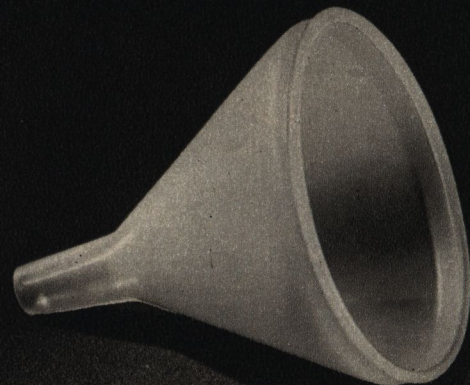
Kodak Photo-Print Outfit (for printing only) available soon.



PROCESSING ACCESSORIES

Alka Funnel (Type MW/81)

A handy time-and-trouble saver to add to your darkroom accessories . . . which means, no more spilt chemicals, no more frayed nerves when bottling solutions. It is all moulded in pliable plastic and available in various colours. The funnel mouthpiece is 3in. in diameter and terminates in a spout 1in. long by $\frac{3}{8}$ in. wide.



Austral Safelight Lamp

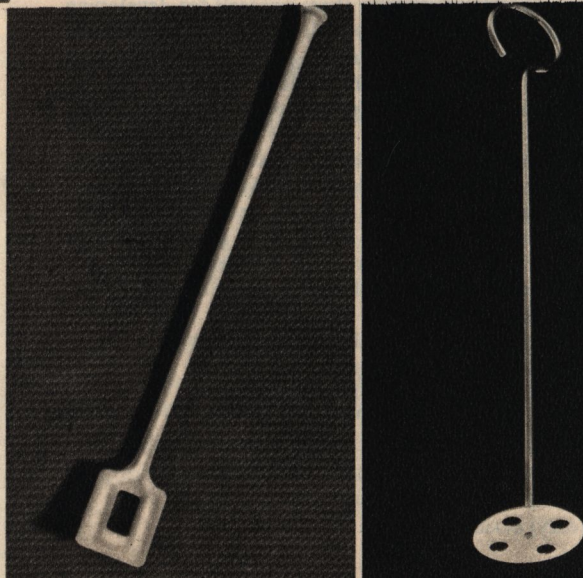
Correct darkroom illumination is vital to processing success — hence the Austral Safelight Lamp is a “must” for your darkroom. Designed mainly as a wall light, but provision has also been made for it to be hung from the ceiling or cupboards. Of all metal construction with spray finish, has light-proof ventilation to minimise overheating. Supplied with B.C. socket, flex, and 3-pin plug but without safelight filter or globe. Made in two sizes to accommodate 5 x 7in. or 8 x 10in. Wratten safelight filters.

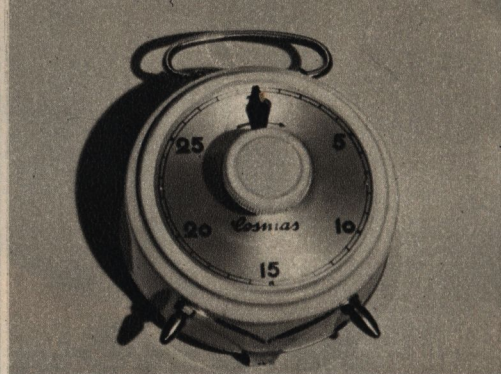
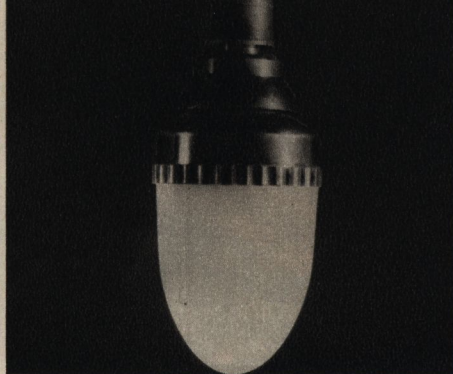
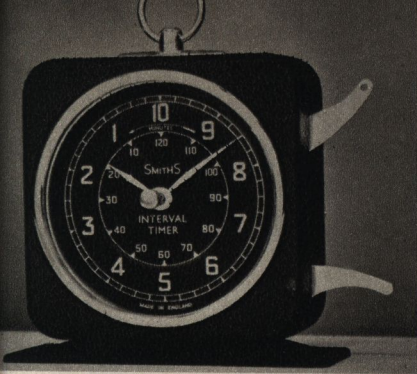
Kodak Stirring Paddle (Close right)

A handy 3-purpose processing aid — for crushing chemicals, stirring solutions, and agitating prints. Eliminates the necessity of touching solutions and prints with hands. Length, 10in. Moulded in strong plastic.

Kodak Chemical Mixing Plunger (Far right)

The perforated plunger head mixes as it plunges thus giving a more efficient mix than stirring. Length is 10 inches. Plunger head is 1½in. in diameter. In stainless steel buffed to a high polish.





Smith's Interval Timer
 Provides for accurate timing of processes from fractions of minutes up to two hours. The completion of selected periods is signalled by a loud alarm bell which rings for 10 seconds.

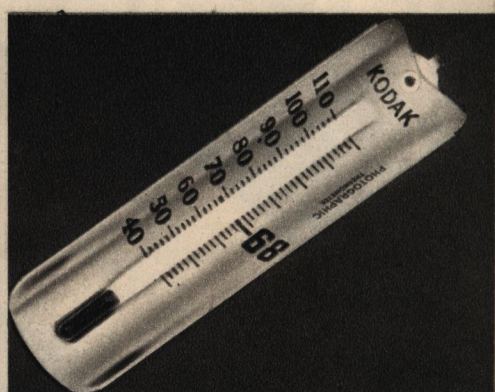
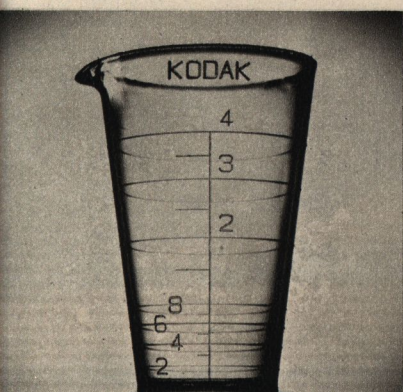
Brownie Safelight Lamp
 Comprises lamp-holder and plastic orange safelight cone which screws on over 15w globe. Plugs into household light fitting. For printing and enlarging only.

Cosmas Darkroom Timer
 Smart, all-metal timer with large figures for easy reading. Three models — for timing up to 15, 30 and 60 minutes. Large knurled knob winds both clock mechanism and alarm.

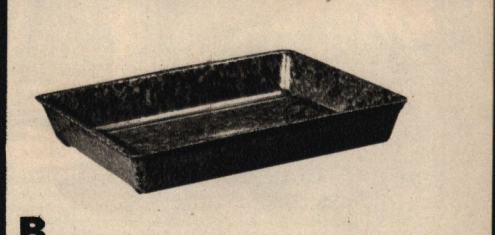
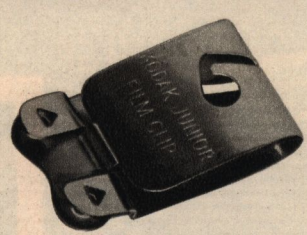
Graduates
 A necessary aid in every darkroom for accurately measuring solutions. All-moulded in plastic and marked in 1/2oz. measurements — in 4oz. size only. Available in glass in 8oz. and 16oz. sizes.

Kodak Plastic Dishes
 Ideal for enlargements. In two types — opaque and transparent. Moulded in tough, top quality plastic, impervious to acid solutions. 2 1/4 in. deep with ridged bottom. Sizes: 11 in. x 13 in., 13 in. x 16 in.

Kodak Thermometer
 Designed and made specifically for photographic use. Degree readings, which range from 40-110 deg. F., are boldly marked and widely spaced. Metal casing is non-corrosive.

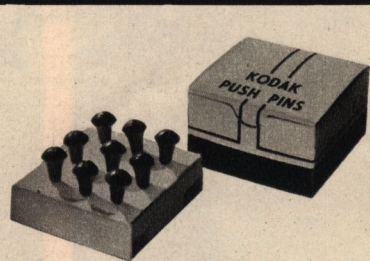


(A) Kodak Junior Film Clip
 For safer and easier processing of roll films. Notch in top for quick, easy hanging on drying line. In stainless steel.

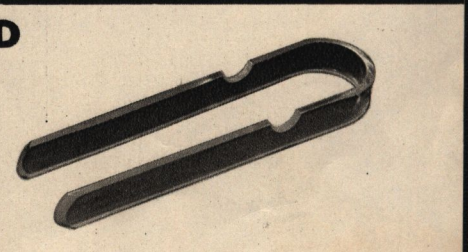


(B) Marquis Developing Dish
 Strong durable plastic dish. Has bevelled bottom and pouring lip. Available in 4 x 5 in., 5 x 7 in. and 9 x 11 in. sizes.

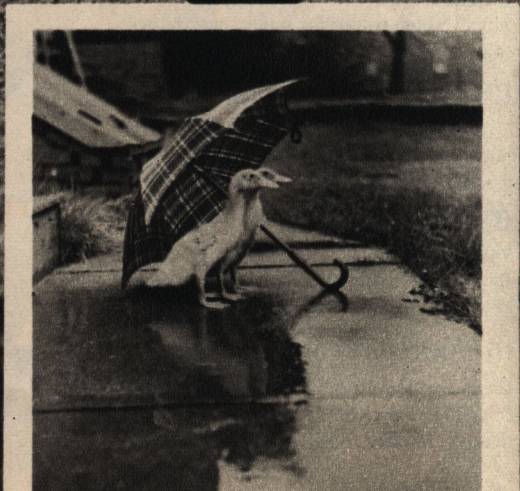
(C) Kodak Darkroom Pins
 Specially designed for photographic use. Each pin is 1 in. long with tempered point and plastic head. 12 pins per box.



(D) Austral Print Forceps
 Ideal for handling prints in chemical solutions — no finger stains, no wet hands. Notched to rest on dish.



A B C D



Supplement to the Kodak Catalogue

PRICE LIST

All prices subject to alteration without notice. The inclusion of goods in this list does not necessarily imply they are available at any particular time.

For quick reference to descriptive product details please consult Index on Page 3 of Catalogue.

Effective: 1st. September, 1956.

	£	s.	d.
CAMERAS			
Brownie Model D	2	18	9
Brownie Model E	3	7	6
Brownie Model F	3	15	0
Brownie Model I	2	4	9
Brownie 127	1	11	8
Brownie Cresta	2	18	9
Brownie Reflex	3	14	7
Kodak Duaflex	5	10	3
Kodak Junior I	7	3	4
Kodak Junior II	10	5	0
Kodak Sterling	13	18	4
Kodak Retinette	19	5	0
Kodak Retina Ib	30	2	11
Kodak Retina IIc	45	18	9
Kodak Retina IIIc	63	1	8
Ensign Ful-Vue Super	4	5	7
Ensign Snapper	7	5	10
Ensign Selfix 820 Special	33	18	9
Ensign Selfix 12-20 Special	33	18	9
Ensign Selfix 16-20 Model II	23	17	6
Flexaret IV	-	-	-
Hasselblad 1000F	184	5	0
Hasselblad Superwide	224	3	4

CAMERA ACCESSORIES

Kodak Retina:			
Lens Hood (for Standard lens)	17	6	
Lens Hood (for Wide-Angle lens)	11	3	
Lens Hood (for Telephoto lens)	1	3	6
Auxiliary Lenses (N.1, N.2) each	2	1	0
Kodablitz Flash Gun	3	14	3
Filters	1	10	9
Table Stand	17	10	0
Frame Finder	2	18	0
Frame Finder (for Retina IIc and IIIc)	3	8	6
Close-up Rangefinder Kit	14	3	0
Kodalux L Meter	12	11	0
Retina-Longar-Xenon C Lens	33	6	9
Retina-Curtar-Xenon C Lens	24	11	0
Close-Up Attachment	7	19	2
Copying Stand	13	1	3
Micro-Adapter	21	17	3
Stereo Attachment	23	0	3
Optical Multiple Finder	6	11	0
Hasselblad:			
Zeiss Sonnar Lens, 135mm., f/3.5	132	18	6

	£	s.	d.
Zeiss Sonnar Lens, 250mm., f/4	225	8	6
Zeiss Sonnar Lens, 250mm., f/5.6	153	2	6
Zeiss Distagon Wide-Angle Lens, 60mm., f/5.6	95	17	0
Magnifying Hood	18	15	0
Sports Finder	9	7	6
Roll-Film Magazine	43	2	6
Filters, 80mm., Series VII	3	12	6
Filters, 80mm., Series VIII	5	15	0
Extension Bellows	51	13	6
Remote Control Shutter	31	15	0
Extension Tube No. 20	9	7	6
Extension Tube No. 40	10	10	0
Microscope Adapter	10	14	3
Contact Shoe	1	13	6

Camera Cases:

(Sling Type)

Kodak Juniors and Sterling	1	5	9
Ensign Snapper	1	5	9

(Always-Ready-Type)

Brownie Reflex	18	6	
Brownie Cresta	1	5	9
Kodak Duaflex	1	3	6
Ensign Ful-Vue Super	1	2	3
Ensign Selfix 820 Special	4	4	6
Ensign Selfix 16-20	4	4	6
Ensign Selfix 12-20 Special	4	4	9
Flexaret	4	1	9
Kodak Retinette	3	4	3
Kodak Retina Ib, IIc, IIIc	3	7	6

(Box Type)

Six-20 Brownie (All Models)	1	3	0
Brownie 127	10	7	
Brownie Cresta	1	5	9
Kodak De Luxe Shoulder Bag	6	3	9
Kodak Senior De Luxe Shoulder Bag	9	1	0
Palec Exposure Meter	13	16	0
Nebro Visual Exposure Meter	2	3	0
Kodak Adapter Ring—Series V	1	3	6
Series VI	1	4	3
Kodak Retaining Ring	7	6	
Kodak Lens Hood—Series V	16	0	
Series VI	16	5	
Austral Close-up Lenses—32mm.	9	3	
38mm.	10	0	
42mm.	10	0	
Austral Filters 32mm.—Red	14	0	
Other colours	11	9	

	£	s.	d.
38mm.—Red	15	3	
Other colours	12	9	
42mm.—Red	15	9	
Other colours	13	6	
53mm.—Red	2	0	9
Other colours	1	17	3
Prazisa Rangefinder	1	18	0
Barton Ball-and-Socket Tripod Head	15	0	
Austral Lens Cleaning Tissue		6	
Zenith 2-section Tripod	2	9	0
Zenith 3-section Tripod	4	5	0
Rowi Tripods:			
Flat (Brass, 7-Sect.)	6	15	9
Turn (Brass, 4-Sect.)	5	7	9
Turn (Nickelled Iron, 3-Sect.)	2	16	3
Turn (Nickelled Iron, 4-Sect.)	3	0	3
Roundax (Brass, 5-Sect.)	7	3	0
Braided Cable Release — 3½"	4	4	
6"	5	3	
9½"	6	1	

LIGHTING EQUIPMENT AND ACCESSORIES

Barton Floor Light	4	13	9
Barton Junior Floodlight	2	12	6
Barton Single Unit Reflector	8	1	3
Barton Arm and Reflector for above	3	15	9
Barton Spring-Clamp Reflector	5	3	0
Barton 500-watt Spotlight	10	15	9
Barton Stand for Spotlight	6	9	3
Flood Lighting Lamps:			
Argaphoto—500W, Type B	1	4	5
500W, Type BM	1	16	11
Photoflood—No. 1 250W, 2-3 hour	4	11	
No. 2 500W, 6 hour	12	1	
500W, 100 hour	1	4	5
Photolita—250W, 2-3 hour	4	11	
250W, mirror back	12	6	
500W, 6 hour	12	1	
500W, mirror back	1	1	4
Kodak Flashholder Model II	2	13	9
Camera bracket for above	9	9	
Lead for above	11	0	
Palec G100 Flash Unit	41	3	0

£ s. d.

Flash Lamps:			
G.E.C. 1, Capless	1	6	
5, A.S.C.C.	2	11	
22, E.S.	3	8	
Photoflux PF.1, Capless	1	3	
PF.14, A.S.C.C.	1	7	
PF.25, A.S.C.C.	1	9	
PF.60, E.S.	2	11	

PROCESSING ACCESSORIES

Kodacraft Roll-Film Tank	1	15	0
Paterson 35mm. Tank	2	14	0
Kodak Photo-Finishing Kit	3	10	0
Kodak Photo-Print Outfit	2	18	6
Kodak Photo-Hobby Outfit	5	10	0
Plastic Apron	16	4	
Kodak Junior Film Clip	2	10	
Cosmas Darkroom Timer	3	15	6
Cosmas Darkroom Timer (Luminous Dial)	3	16	1
Smith's Interval Timer	5	15	0
Marquis Dishes—4" x 5"	3	0	
5" x 7"	4	3	
7" x 9"	11	6	
9" x 11"	16	9	
Alka Plastic Funnel	1	3	
Marquis Funnel	1	11	
Graduated Plastic Tumbler	2	9	
Graduated Glass Tumbler 8 oz.	6	0	
16 oz.	9	0	
Kodak Plastic Dishes—11" x 13"	3	3	0
13" x 16"	4	0	0
Nutex Gloves	4	6	
Kodak Film and Plate Hangers:			
3¼" x 4¼"	13	2	
4" x 5"	15	6	
4¾" x 6½"	16	6	
6½" x 8½"	17	6	
Kodak Chemical Mixing Plunger	3	1	
Kodak Darkroom Pins	2	9	
Austral Print Forceps	4	4	
Brownie Safelight Lamp	1	6	0
Austral Safelight Lamp—5" x 7"	5	3	9
8" x 10"	5	7	6
Kodak Pyramid Lamp, Ventilated,			
5" x 7"	4	0	6
Unventilated, 5" x 7"	2	15	0
Kodak Safelight Filters, 5" x 7"	8	4	
8" x 10"	9	10	
Kodak Thermometer	7	0	
Kodak Balance Scales (with weights)	8	5	9
Spontex Sponge — Small	4	5	
Large	7	9	

	£	s.	d.
Kodak Stirring Paddle	2	7	
Plastron Stirring Rod—9"	1	9	
12"	2	5	
18"	3	1	
Darkroom Globes:			
Osram—15W (sprayed red)	2	10	
15W (sprayed orange)	4	0	
Philips—B.C., Dark Red (Colour Glass)	8	1	
B.C., Green (Colour Glass)	8	1	
B.C., Green (Neon Filament)	9	4	
B.C., Light Red (Col- our Glass)	8	1	
B.C., Yellow (Colour Glass)	5	11	
B.C., Yellow-Green (Sprayed)	5	5	

ENLARGERS AND ENLARGING ACCESSORIES

Kodak Precision Enlarger (with Kodak Ektar 100mm. f/4.5 lens)	104	2	6
Lusca Enlarger, with f/4.5 lens	27	10	0
Lusca Enlarger, without lens	16	10	0
Lusca Enlarger Accessories:			
Glass for negative carrier	10	6	
Diffusion disc	8	6	
Metal focusing cone—2"	1	11	9
3"	1	13	0
4"	1	15	0
Plastic focusing cone—2"	19	0	
4"	1	0	9
Lens panel	10	6	
Kodaloid Masks	1	3	
Gnome Gamma Enlarger 35mm.	-	-	-
Gnome Minor 2½" x 3½" Enlarger	22	5	6
Gnome Delta De Luxe Enlarger	63	12	6
Rax 35mm. Enlarger	28	18	6
Barton Foot Switch	3	8	0
El-an-De Masking Board—			
6½" x 8½"	2	10	0
8" x 10"	2	19	6
10" x 12"	3	5	9
12" x 15"	4	8	6
Kodak Enlarging Focus Finder	1	14	9
Masters Masking Board—			
8" x 10"	7	5	0
10" x 12"	8	6	0
12" x 15"	10	5	6
Plastic Dust Cover—Small	16	1	
Large	19	7	

Enlarging Lenses:

	£	s.	d.
Cooke Ental—50mm., f/3.5	22	5	0
80mm., f/4.5	27	18	6
5 inch, f/4.5	36	15	0
Kodak Ektanon—2 inch, f/6.3	6	0	6
2 inch, f/4.5	14	1	4
3 inch, f/4.5	19	2	3
4 inch, f/4.5	24	6	3
Ross Resolux — 5cm., f/3.5	15	18	6
9cm., f/4	19	6	0
11cm., f/4	21	17	6
Enlarger Lamps:			
Photocrescenta—40W	5	0	
75W	5	2	
150W	8	0	
250W	8	10	
A.E.I.—150W	9	5	
B.G.E.—300W	12	4	

PRINTING ACCESSORIES

Paterson Printer	3	9	6
Printing Frames:			
V.P.K. and Baby Brownie	5	6	
2½" x 2½"	5	7	
2½" x 3½"	5	10	
2¾" x 4½"	6	9	
3¼" x 4½"	7	0	
2¾" x 4½"	6	9	
3½" x 5½"	7	4	
4¾" x 6½"	8	3	
Kodak Printing Masks (all sizes)	2	3	
Austral Double-Sided Glazer	8	17	6
Kodak Glazing Plates—8" x 10"	1	2	0
10" x 14"	1	11	0
12" x 18"	2	4	0
Austral Print Roller	7	0	
Ross Heavy-Type Roller—4"	10	8	
6"	13	0	
8"	15	6	
Austral Print Trimmer—7"	3	3	0
12"	8	12	3
15"	10	10	0
Barton Print Washing Tanks	5	12	6
Barton Hose Assembly (syphon)	2	7	0

PROJECTORS AND PROJECTION ACCESSORIES

Kodaslide Model 5 Projector	46	5	11
Neo-Diafant Model V Projector	49	1	0
Fantax V-150 Projector	32	6	9
Fantax V-300 Projector	37	15	0
Kodaslide Compartment File	2	3	9

	£	s.	d.
Kodaslide File Box	1	1	0
Kodaslide Flexo File	13	0	
Kodaslide Pocket Viewer	1	2	6
Paterson Viewer	14	6	
Regal Projection Stand—			
Collapsible	11	10	0
Adjustable height	12	8	0
Regal Screenmaster Tripod Screen			
30" x 40"	21	4	0
39" x 52"	24	10	0
45" x 60"	28	0	0
48" x 48"	29	11	6
Regal Cadet Screen—30" x 40"	6	6	0
Regal Monarch Screen—			
White Matte 39" x 52"	8	18	6
White Matte 48" x 48"	9	4	9
Glass Beaded 30" x 40"	9	18	6
Glass Beaded 39" x 52"	12	6	9
Glass Beaded 48" x 48"	12	19	6
Austral Adjustable Screen Stand	10	12	9
Arnos Metal Transparency Frames	1	1	0
Kodak Ready-Mounts, un gummed			
(pkt. of 50)	5	0	
Kodak Ready-Mounts, gummed			
(pkt. of 50)	8	6	
Kodachrome Kodaslide Transpar-			
encies	4	6	
Projection Lamps:			
Phillips—			
100W, 32V, A.S.C.C.	19	6	
100W, 240V, E.S. & P28	19	6	
150W, 100V, E.S. & P28	18	6	
200W, 240V, P.28	1	7	0
250W, 100V, E.S.	1	7	0
250W, 240V, P28	1	8	0
300W, 240V, P28	1	11	6
300W, 100V, A.S.C.C.	1	10	6
500W, 240V, ES & P28	2	2	9
Osram—			
100W, 100V, E.S.	19	6	
150W, 240V, A.S.C.C.	18	6	
250W, 240V, Prefocus	1	8	0
300W, 240V, Prefocus	1	16	0
500W, 100V, B. & H.	2	9	0
Mazda—			
75W, 240V, A.S.C.C.	19	0	
100W, 100V, E.S.	19	6	
150W, 240V, A.S.C.C.	18	6	
250W, 240V, Prefocus	1	8	0
400W, 100V, B. & H.	2	7	0
500W, 240V, Prefocus	2	5	0
750W, 240V, Prefocus	2	13	9

	£	s.	d.
COLOURING, RETOUCHING, MOUNTING			
Austral Transparent Water Colours	2	10	
Kodak Oil Colour Set	1	4	0
Stabilo Coloured Pencils (Set of			
12)	13	9	
W. & N. Photo Tints — No. 1	12	8	
No. 2	1	10	1
Kodak Oil Medium (½-oz. bottle)	1	3	
Morgan Photo Oil Colour Outfit	1	16	9
Morgan Photo Oil Colours, singles	2	2	
W. & N. Spotting and Retouching			
Sets	13	9	
W. & N. Spotting Brushes—			
No. 00	2	11	
No. 0	2	11	
No. 1	3	2	
No. 2	3	6	
No. 3	4	4	
No. 4	6	2	
No. 5	7	6	
No. 6	8	11	
Kodak Retouching Medium, ½-oz.	1	6	
Kodak Spotting Medium, 1-oz.	2	9	
Kodak Opaque, ½-oz.	2	0	
Johnson Pen-Nib Print Trimmer	8	6	
Tradition Retouching Pencils (ea.)	6		
Ideal Photo-Corners	1	1	
Kodak Photo Paste—2-oz.	2	3	
4-oz.	3	0	
16-oz.	5	0	
Kodak Liquid Glue	2	0	
ALBUMS			
Rhodes	7	6	
Glen	14	9	
Victor No. 1	16	10	
Victor No. 2	18	6	
Ormond Series	17	6	
Camera Studies	1	2	0
Regal—No. 1	18	3	
Spare Leaves (doz.)	5	10	
No. 3	1	6	6
Spare Leaves (doz.)	6	3	
No. 5	1	14	3
Spare Leaves (doz.)	7	4	
New Strand—No. 1	1	12	6
Spare Leaves (doz.)	5	9	
No. 2	1	18	0
Spare Leaves (doz.)	6	6	
No. 3	2	2	0
Spare Leaves (doz.)	7	0	
No. 4	2	7	9
Spare Leaves (doz.)	7	6	
No. 5	2	10	0
Spare Leaves (doz.)	8	0	

	£	s.	d.
Strand Special	3	11	3
Spare Leaves (doz.)		8	0
Royal	1	15	3
Spare Leaves (doz.)		5	3
Renown—No. 1	1	10	0
Spare Leaves (24)		6	2
No. 2	1	18	0
Spare Leaves (24)		7	9
No. 3	2	5	0
Spare Leaves (12)		4	6
Austral Negative Album—			
2½" x 3½"		16	3
24mm. x 36mm.	1	1	6

FRAMES

Hogarth—			
3½" x 5½"		15	4
4½" x 6½"		16	1
6" x 8"		18	4
8" x 10"	1	4	0
10" x 12"	1	8	10
Reynolds—			
2½" x 3½"		9	9
4½" x 6½"		15	0
6" x 8"		16	1
8" x 10"		18	9
10" x 12"	1	4	0
Slydin No. 9—Postcard		4	11
4" x 6"		4	11
6" x 8"		6	4
7½" x 9½"		7	11
8" x 10"		8	5
9" x 12"		9	10
10" x 12"		10	6
Slydin No. 73/42 —			
6" x 8"		8	5
7½" x 9½"		8	9
8" x 10"		10	6
9" x 12"		11	0
10" x 12"		12	7
Todd—Oblong,			
2" x 2¾"		5	8
2½" x 3½"		6	0
2½" x 4¾"		7	9
Oval,			
1¾" x 2¼"		11	6
2¼" x 3¼"		13	6
3¼" x 4¼"		16	6
4" x 6"		18	6
6" x 8"	1	9	6
Round,			
3" x 3"		14	6
Da Vinci 8" x 10"	1	8	6

£ s. d.

BOOKS

Kodak Data Books:			
Kodak Papers		2	0
Kodak Films		3	6
Kodak Processing and For-			
mulae		3	6
Flash Technique		3	6
Kodachrome Film and Its Use		5	6
Kodak Information Book		5	0
All-in-One Camera Book		14	3
All the Photo Tricks	1	3	3
Amateurs Just Like You	1	3	3
Bigger, Better Enlarging	1	12	3
Brighter Photography for Begin-			
ners		10	0
British Journal Almanac—Paper		11	3
Cloth		16	0
Build Your Own Enlarger	1	1	0
Colour Photography:			
How It Works		8	3
Colour Photography in Practice	4	2	0
Developing, The Negative Tech-			
nique		1	3
Enlarging	1	3	3
Exposure	1	11	6
Focal Charts, each		5	3
Focal Photo Guides		3	0
Graphic Graflex Photography	3	9	3
Group Photography		11	0
How to Make Good Pictures		11	6
Kodachrome and Ektachrome			
From All Angles	4	16	6
Lighting for Photography	1	6	3
Making an Enlarger		5	3
My Way with a Miniature	1	3	3
Nature and My Camera	1	1	3
Photo Amateurs Pocket-Book		7	6
Photoflash in Practice	1	6	3
Straightforward Developing		7	6
Straightforward Printing		7	6

KODAK SENSITIZED MATERIALS

Film (In Rolls):			
V127		2	9
TX127		3	6
V620, V120		3	1
TX620, TX120		3	11
V116, V616		3	7
XX116, XX616		4	7
TX135		10	3

£ s. d.

FX135	10	3
K135 (Incl. Processing)	1	18 3
TX828	4	0
K828 (Incl. Processing)	1	1 6
V122	5	5
Film (in sheets)—Prices on request.		
Plates—Prices on request.		
Velox Paper:		
1½" x 2¾", 25 sheets	1	8
100 "	6	0
2½" x 2½", 25 sheets	1	11
100 "	7	3
2½" x 3½", 25 sheets	2	9
100 "	10	2
2¾" x 4½", 25 sheets	3	11
100 "	14	4
3¼" x 4¼", 25 sheets	4	4
100 "	16	0
Bromide and Bromesko:		
2½" x 3½", 25 sheets, SW	2	9
DW	3	4
2¾" x 4½", 25 sheets, SW	3	11
DW	4	9
3¼" x 4¼", 25 sheets, SW	4	4
DW	5	3
3½" x 5½", 25 sheets, SW	6	0
DW	7	4
4¾" x 6½", 10 sheets, SW	3	11
DW	4	9
6½" x 8½", 10 sheets, SW	6	11
DW	8	6
8" x 10", 10 sheets, SW	10	0
DW	12	4
10" x 12", 10 sheets, SW	15	0
DW	18	6
12" x 15", 10 sheets, SW	1	2 8
DW	1	7 9
16" x 20", 10 sheets, SW	2	0 2
DW	2	9 5

KODAK CHEMICAL PREPARATIONS

Kodak Bromesko Developer—		
½ gallon	6	0
Kodak Dektol Developer—		
20 ounces	3	0
½ gallon	5	9
1 gallon	9	6
Kodak Liquid Developer—		
8 ounces	2	9
Kodak Microdol Developer—		
20 ounces	3	3
½ gallon	6	9
1 gallon	10	9

£ s. d.

Kodak Tropical Developer—		
½ gallon	6	9
Kodak Universal M-Q Developer		
(to make 12 ounces)	9	
Kodak Versatol Developer—		
8 ounces	3	6
Kodak Developer D-19—		
½ gallon	6	0
1 gallon	10	3
Kodak Developer DK-50—		
½ gallon	3	9
1 gallon	5	9
Kodak Developer DK-60a—		
½ gallon	4	6
1 gallon	6	0
Kodak DK-60a TR Replenisher—		
1 gallon	10	6
Kodak Developer D-72—		
20 ounces	3	0
½ gallon	5	9
1 gallon	9	6
Kodak Developer D-76—		
20 ounces	2	9
½ gallon	5	0
1 gallon	8	0
Kodak Acid Fixer—		
20 ounces	2	6
½ gallon	6	6
1 gallon	11	6
Kodak Liquid Hardener—8 ounces	2	3
Hypo—1 lb.	2	0
7 lb.	12	9
Tropical Hardener—½ gallon	3	6
Kodak Chromium Intensifier —		
(Set of 2 tubes)	3	9
Kodak Odourless Sepia Toner—		
(In two 3-ounce bottles)	4	3
Kodak Dead Black—		
2 ounces	3	0
10 ounces	9	0
20 ounces	15	0
Kodak Anti Calcium—4 ounce	3	0
Kodak Anti-Fog No. 1 —		
(To make 40 ozs.)	2	3
Kodak Glazing Solution—		
4 ounces	2	9
Kodak Hypo Eliminator—		
16 ounces	3	9
Kodak Lens Cleaner—		
1 ounce	2	0
4 ounces	3	6
Kodak Photo-Flo—4 ounces	2	9
Kodak White Ink—per bottle	2	0

Kodak White Ink—per bottle
 Kodak Photo Fix—4 ounces
 Kodak Liquid Developer—
 18 ounces
 Kodak Universal M-O Developer
 (18 make 12 ounces)
 Kodak Vistal Developer—
 28 ounces
 Kodak Developer D-19—
 6 1/2 gallon
 Kodak Developer DK-50—
 1/2 gallon
 Kodak Developer DK-60—
 1/2 gallon
 Kodak DK-60a TR Rapidizer—
 1 gallon
 Kodak Developer D-15—
 1/2 gallon
 Kodak Developer D-18—
 1/2 gallon
 Kodak Liquid Hardener—8 ounces
 Kodak Liquid Hardener—4 ounces
 Kodak Chromium Intensifier—
 (set of 2 tubes)
 Kodak Obsolete Sepia Toner—
 (in two 5-ounce bottles)
 Kodak Dead Black—
 2 ounces
 10 ounces
 20 ounces
 Kodak Anti Calcium—1 ounce
 Kodak Anti-Fog No. 1—
 (1% make 40 oz.)
 Kodak Gazing Solution—
 4 ounces
 Kodak Hydro Eliminator—
 2 1/2 ounces
 Kodak Lens Cleaner—
 21 ounce
 4 ounces
 Kodak Photo Fix—4 ounces
 Kodak White Ink—per bottle



Kodak White Ink—per bottle
 Kodak Photo Fix—4 ounces
 Kodak Liquid Developer—
 18 ounces
 Kodak Universal M-O Developer
 (18 make 12 ounces)
 Kodak Vistal Developer—
 28 ounces
 Kodak Developer D-19—
 6 1/2 gallon
 Kodak Developer DK-50—
 1/2 gallon
 Kodak Developer DK-60—
 1/2 gallon
 Kodak DK-60a TR Rapidizer—
 1 gallon
 Kodak Developer D-15—
 1/2 gallon
 Kodak Developer D-18—
 1/2 gallon
 Kodak Liquid Hardener—8 ounces
 Kodak Liquid Hardener—4 ounces
 Kodak Chromium Intensifier—
 (set of 2 tubes)
 Kodak Obsolete Sepia Toner—
 (in two 5-ounce bottles)
 Kodak Dead Black—
 2 ounces
 10 ounces
 20 ounces
 Kodak Anti Calcium—1 ounce
 Kodak Anti-Fog No. 1—
 (1% make 40 oz.)
 Kodak Gazing Solution—
 4 ounces
 Kodak Hydro Eliminator—
 2 1/2 ounces
 Kodak Lens Cleaner—
 21 ounce
 4 ounces
 Kodak Photo Fix—4 ounces
 Kodak White Ink—per bottle

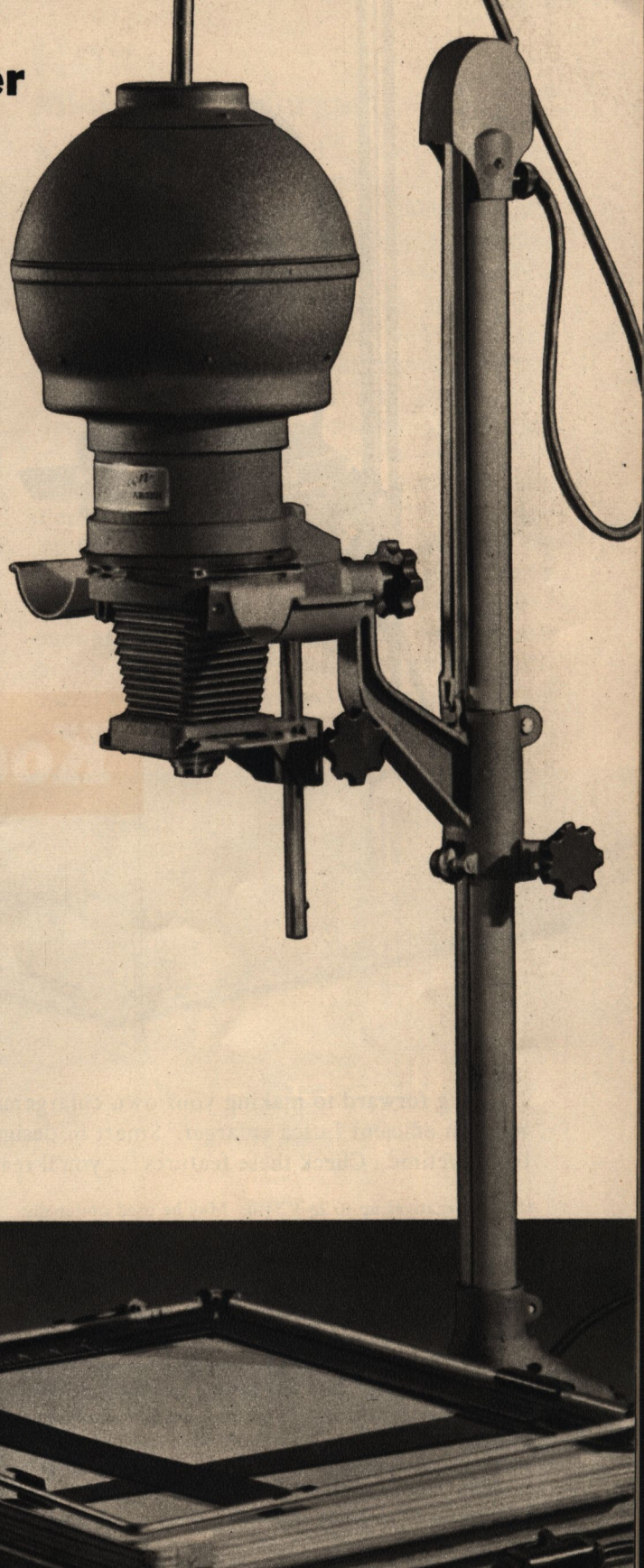
Kodak Precision Enlarger

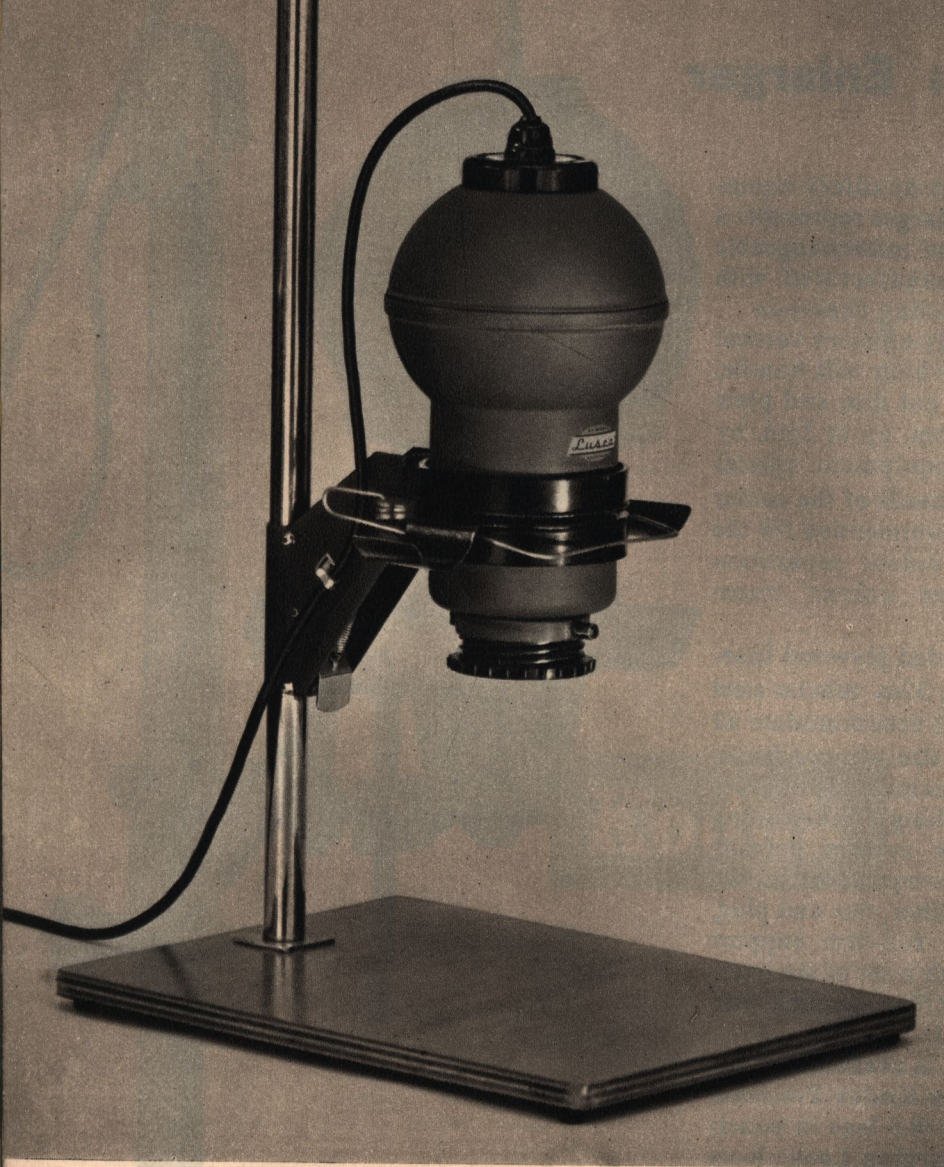
TOGETHER with its auxiliary equipment, the Kodak Precision Enlarger represents a carefully-planned programme of interchangeable components, designed and manufactured with precision to meet the most exacting demands.

The basic equipment is a highly-efficient vertical enlarger for visual focusing, which will handle, with equal efficiency roll film, cut film and plate negatives in all sizes from 35mm. up to 2½ in. by 3½ in. In the design of this equipment special attention has been paid to the needs of the colour worker, and the enlarger is recommended for the exacting work of preparing colour separation negatives from Kodachrome colour transparencies.

Its features include: Resin-bonded plywood base-board measuring 22 in. x 17½ in.; 32 in. tubular steel column of 1½ in. diameter; will accommodate all negatives up to 2½ in. x 3½ in. in size; the condenser head incorporates two 4½ in. diameter condenser lenses and a disc of heat-absorbing, heat-resisting glass; a friction-wheel drive system permits extremely accurate focusing; complete with 240/250-volt 150-watt lamp, safety filter, flex and plug, toggle ON-OFF switch, two roll-film support cups, and a negative carrier with a set of six interchangeable Kodaloid masks. (Not supplied with masking board, lens, or lamp.)

The following range of lenses is available and is recommended for use with the Kodak Precision Enlarger: Ektar 100mm. 4 in. f/4.5 lens in panel; Ross Resolux 5cm. f/3.5 Enlarging Lens; Ross Resolux 9cm. f/4 Enlarging Lens; Ross Resolux 11cm. f/4 Enlarging Lens.





Enjoy the thrill of
making your own
enlargements at home
with the popular

LUSCA ENLARGER

2½ in. x 3½ in.

Looking forward to making your own enlargements? . . . then you'll be best equipped with this modern efficient Lusca enlarger. Smart in design, modest in cost, smooth in operation, reliable for a lifetime. Check these features . . . you'll really enjoy this new thrill in photography.

Accepts negatives up to 2½ x 3½ in. May be used optionally with diffusion or condenser type of illumination. Supplied with a Som-Berthiot 105mm. (4 inch) f/4.5 lens, or is available to order without lens. Head assembly raised or lowered by quick release thumb-operated control plate. Chromium plated 26-inch steel support column. Well-ventilated lightweight lamphouse incorporates B.C. holder (to accept 75w or 100w opal enlarging lamp) and flashed opal diffusing disc. All-metal negative carrier with quality glass plates extension cups, and spring lever to open plates while advancing film. Fitted with focusing cone to suit 4-inch lens; alternatively, equipment may be ordered with cones to suit 2-inch and 3-inch lenses, or available separately. Large knurled knob

locks focusing mechanism. Fitted with removable lens panel (additional panels available separately including screw-threaded panels for Leica lenses). With 105mm. lens the maximum enlargement on the baseboard is 4.7 diameters, minimum is 1.5 diameters. Enlarger head rotates 180 degrees for projection to floor level. Laminated ¾-inch baseboard with rubber pads on the underside. Weight 6 lb. Overall height with enlarger head fully raised, 40 inches. Total area of baseboard, 18 in. x 14 in. Finished in grey brocade lacquer with nickel plating on parts frequently handled. (When ordering, state negative size for which it is required: 24 by 36mm., 1½ by 2½ in., 2½ by 2½ in., or 2½ by 3½ in.; also state focusing cone required.)

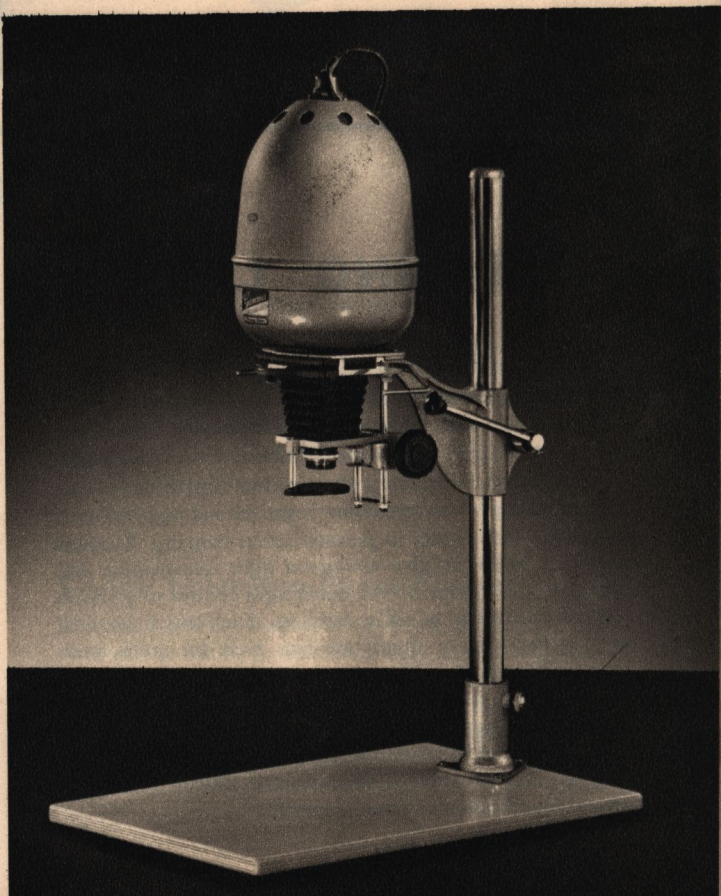


Rax Miniature Enlarger

A cleverly designed and expertly produced enlarger that brings the standard of top-quality miniature enlarging within the scope of all. Check these features: Strong column ensures perfect rigidity. Lamphouse movement is by a large knurled knob and a smooth, firm friction drive. The lamphouse is well ventilated and keeps reasonably cool even after prolonged use. It accepts a 75-watt E.S. opal bulb. Well designed glassless negative carrier — a projecting lever releases pressure to allow free movement of film without scratching. Top quality 60mm. Peplostar f/4.5 lens. Fitted with optically-perfected 70mm. single condenser lens for uniform illumination. Focusing is by a smoothly-operating helical groove in the lens mount which incorporates two Waterhouse stops. 12in. x 14½in. wooden baseboard. All-metal construction with crackle enamel finish.

Gnome Gamma 35mm. Enlarger

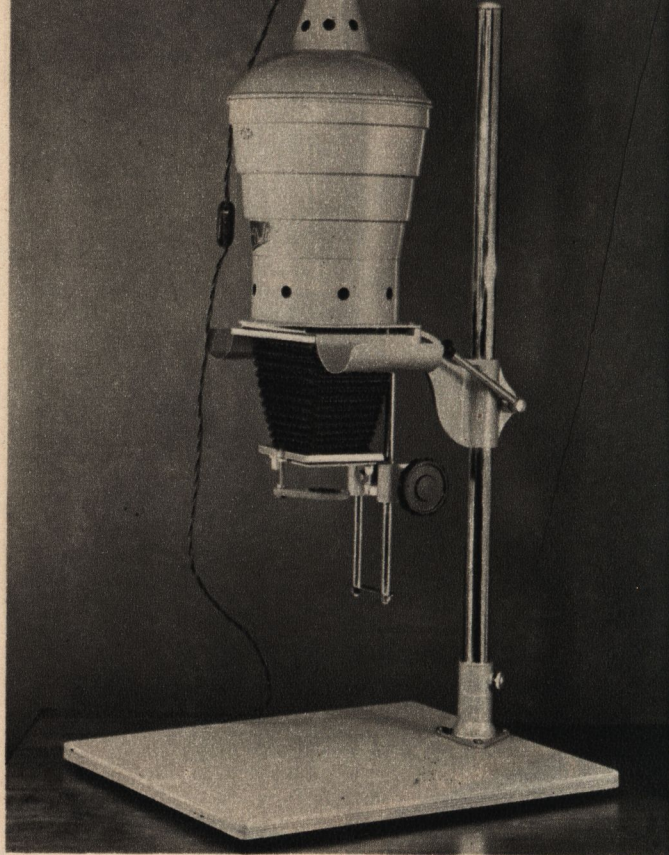
A new and improved version of the popular Gamma de Luxe 35mm. enlarger, the Gamma II has a large re-designed lamphouse to accommodate any enlarging lamp up to 100w. The negative carrier is hinged and has a bevelled top plate to obviate film buckle. Built-in chromium arms hold the unused ends of the film; spring pressure holds the film firmly in place and is quickly released for film transportation. Fitted with a 2in. Wray f/4.5 enlarging lens. Twin parallel focusing bars ensure lens panel rigidity, give a smooth accurate movement and eliminate backlash. Other standard features are: cam-operated release which simplifies raising and lowering; adjustable lamp position; superbly finished in silver grey hammer stove enamel and chromium plating.



Gnome Delta

De Luxe No. 143D Enlarger

Sturdily built and incorporating the latest improvements, the Delta De Luxe opens up an entirely new vista of photographic experience and enables you to retain complete control of the final enlargement from every aspect. Fitted with a 5.3in. Dallmeyer f/4.5 enlarger lens, a spring-pressure negative carrier that will accept negatives up to 3½ x 4½in. (9 x 12cm.), and a laminated multi-ply baseboard. Lamphouse is of modern design and will accommodate lamps up to 150 watts. Other features are: adjustable lamp position; die cast aluminium alloy main arm; twin parallel focusing bars; condenser lenses which are held in an easily removable mount and separated by a circular metal spacer; filter unit; finished in silver grey hammer stove enamel and chromium plating.



ENLARGING LENSES

Kodak Ektanon:

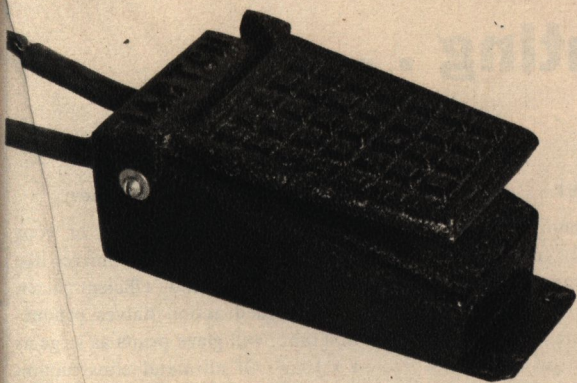
Exceptional amongst enlarging lenses in the exactness of their correction for colour and excellence of resolving power. Not only do they give needle-sharp definition with black-and-white negatives, but they facilitate correct registration during colour printing where separation negatives and matrices must match exactly in order to prevent colour fringing. Surfaces are "Lumenized" to give maximum light transmission and contrast. Click stops on the diaphragm control ring enable the lens aperture to be set in darkness. Each lens is mounted in a 2½-inch square aluminium lens plate for quick interchangeability on the bellows assembly, where a sliding lock-bar holds the plate in position. Available in f/4.5 only in these focal lengths: 50mm. (2-inch) to give a maximum magnification at baseboard of 16 diameters; 75mm. (3-inch) to give a magnification of 10 diameters; 100mm. (4-inch) to give a magnification of seven diameters.

Ross Resolux:

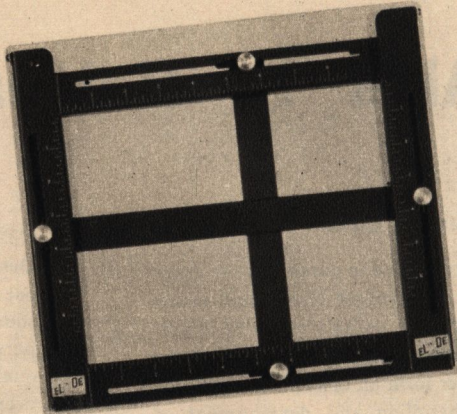
These lenses are specially designed for projection printing and computed to work at the shorter distance normally necessary when making enlargements. The results obtained when using a lens of this type are far superior to those which are possible when a camera lens is used for the purpose. All the internal surfaces are "coated" to give improved light transmission and better contrast. The click stops are particularly useful in the darkroom. Available in a range: 5cm. (2-inch) f/3.5 to cover a negative area of 1 x 1½in.; 9cm. (3½-inch) f/4 to cover 2½ x 2½in.; 11cm. (4½-inch) f/4 to cover 2½ x 3½in.

Cooke Ental:

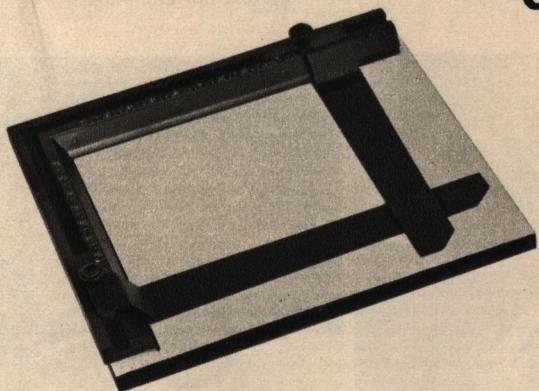
The optical design of Ental lenses is such as to ensure retaining all the detail, brilliance and gradation of the negative, covering the enlargements to the corners of the picture even when used at full aperture. In satin chrome mounting, with positive audible click stops, with iris diaphragm, with R.P.S. flange screws which permit more universal fittings to enlargers. Available in: 50mm. f/3.5 to cover a negative size of 1 x 1½in.; 80mm. f/4.5 to cover 2½ x 2½in.; 5-inch f/4.5 to cover 3½ x 4½in.



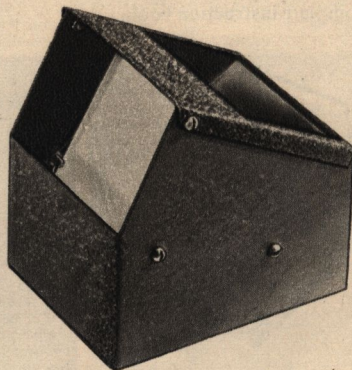
A



B



C



D

ENLARGING ACCESSORIES

Barton Foot Switch

A. An all-metal spring-type foot switch for use with enlargers, printing boxes, inspection lights, and all other types of lighting and other equipment employed for intermittent periods. Its use enables the hands to be left free for other uses. Well designed and sturdily made.

Masters Masking Board

C. Ideal for high quality enlargements requiring accuracy and sharply-detailed white borders. Adjustable arms and special bracket in the base provide for a variety of margin widths on all sides of the print. Bold and clearly-marked figures on two sides for quick accurate masking. Finished in matte black to minimise reflection. In sizes: 8 x 10in., 10 x 12in., 12 x 15in., 16 x 20in., 20 x 24in.

El-an-De Masking Board

B. In a range of four sizes with heavy white enamelled base and all-metal black hinged frame. Adjustable light-gauge rules are easily moved or locked in any position by two large milled knobs. A movable bracket in the base permits margins of $\frac{1}{4}$, $\frac{1}{2}$ and $\frac{3}{4}$ inch. Sizes are: 6 $\frac{1}{2}$ x 8 $\frac{1}{2}$ in., 8 x 10in., 10 x 12in., 12 x 15in.

Kodak Enlarging Focus Finder

D. With this handy darkroom aid on the job, even the smallest negatives can be focused accurately and speedily without straining the eyes. When placed on the masking board and the enlarger switched on (with negative in carrier) it shows a brilliantly illuminated image on the ground glass screen. Sturdily constructed in all metal.

Aids to Better Printing . . .

Paterson Contact Printer

Smartly styled in durable heavy-grade black and yellow plastic and incorporating an entirely new idea in that the yellow plastic side walls of the printer form an efficient safelight for the handling and development of prints. Supplied with masks in three sizes — $1\frac{1}{8} \times 2\frac{1}{2}$ in., $2\frac{1}{4} \times 2\frac{1}{4}$ in., $2\frac{1}{4} \times 3\frac{1}{2}$ in.; with complete instruction book.



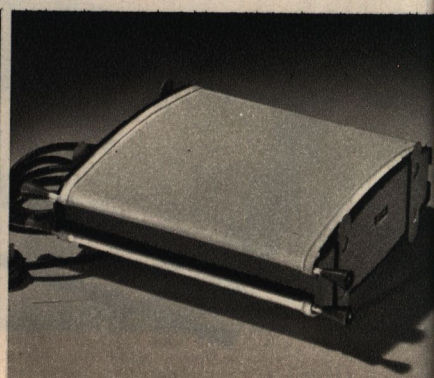
Austral Print Roller

Designed especially for photographic use — a “must” for really successful squeegeeing and mounting of prints, particularly enlargements. Its high-quality rubber roller ensures a perfect even contact between print and mount. Has a strong metal frame and wooden handle to ensure long life. Available in 4in. size only.



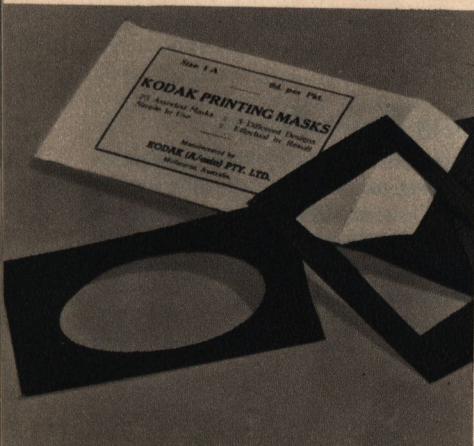
Austral Amateur Glazer

Add to the attractiveness of your prints by giving them a mirror-like finish with this handy efficient glazer. Double-sided action halves production time; will glaze prints as large as 8×10 in. Of all-metal construction and complete with two large chromium plates, two strong white canvas aprons, flex and plug.



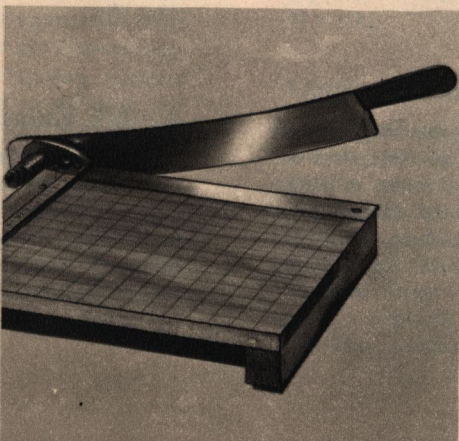
Kodak Printing Masks

Give that professional finish to your prints by using Kodak Printing Masks. So simple to use: just place mask between the glass of the printing frame and the negative — the result is a smart even white border around the picture. Sizes available are: $2\frac{1}{4} \times 3\frac{1}{2}$ in., $2\frac{1}{2} \times 4\frac{1}{2}$ in., $3\frac{1}{4} \times 4\frac{1}{2}$ in., $3\frac{1}{2} \times 5\frac{1}{2}$ in.



Austral Print Trimmer

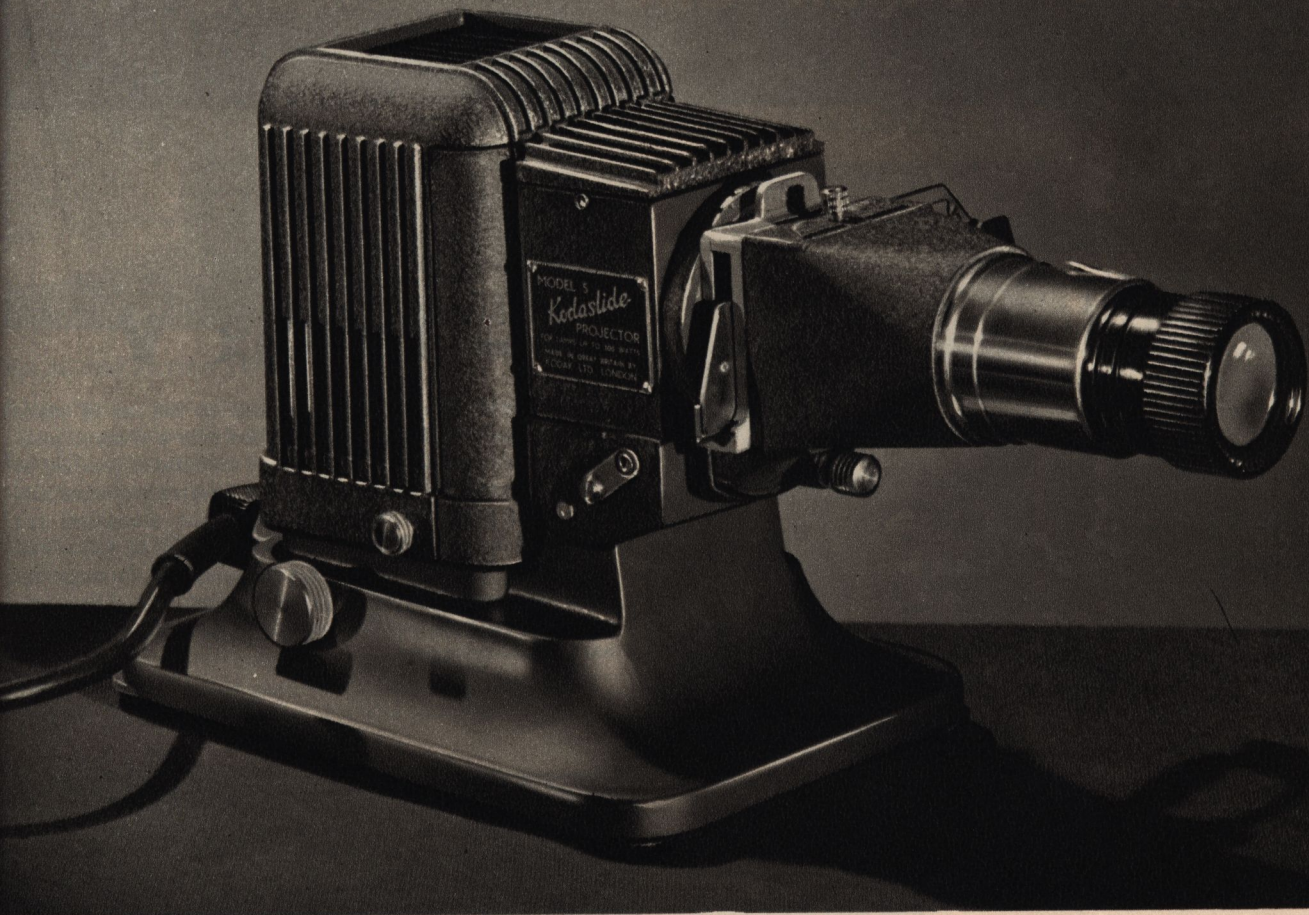
A sturdy accurate all-purpose trimmer. The board is marked in lin. squares, and is squared to a fine steel cutting edge to ensure perfect accuracy. Special spring tension take-up holds blade in alignment and prevents it from falling when in use. Available in 7in., 12in. and 15in. sizes.



Kodak Printing Frame

A “must” for efficient printing — it provides a firm contact between negative and printing paper to ensure an even sharpness of the overall image. Made of strong white wood with cloth-covered hinged back, and strong metal clamps. Sizes available: $2\frac{1}{2} \times 3\frac{1}{2}$ in., $2\frac{1}{2} \times 4\frac{1}{2}$ in., $3\frac{1}{2} \times 5\frac{1}{2}$ in., $4\frac{3}{4} \times 6\frac{1}{2}$ in.





Kodaslide Projector Model 5

An excellent 35mm. film slide projector to give clarity and brilliance to the screening of miniature camera "stills." The 5in. Kodak Projection Lens and the three condenser lenses are "Lumenised" (hard coated) to provide maximum light transmission, whilst the extremely cool-working mechanism ensures the utmost safety and involves no risk of damage to precious film slides. To give maximum screen illumination the filament of the 250-watt class A1 projection lamp, which is assisted by a 40mm. polished metal reflector, is focused on to the projection lens by the condenser system. An automatic shutter, situated immediately behind the lens, cuts

off all light from the screen as soon as the slide carrier commences to move across, and opens as soon as the movement has been completed. By revolving a milled disc the height of the rear feet may be adjusted to prevent the projector rocking on an uneven surface. A knurled knob on the side of the projector, when rotated, elevates the front of the projector to any angle from 0 to 8 degrees. The whole lens and slide-carrier assembly may be rotated through 360 degrees. The body is finished in antique-silver wrinkled enamel, and the base in antique silver semi-gloss enamel. Black plastic and duralumin fittings. Film Strip attachment available separately.

2 by 2-inch Slide Projectors . . .

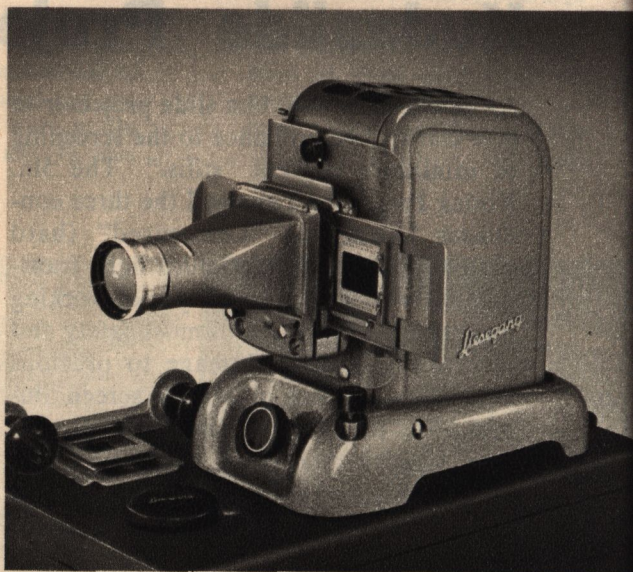


Liesegang Fantax V

Brilliant screen illumination is assured by the use of coated aspheric condenser lenses in conjunction with a concave precision glass mirror; needle-sharp screen definition is provided by the four-component 85mm. Sankar $f/2.5$ coated projection lens. The smart pastel green hammergeglow finish aluminium cast housing is double walled to provide ventilation as well as heat insulation. The new easy-to-use vertical slide frame allows continual movement of slides. Supplied with 150w 240v medium pre-focus grid-filament lamp but without film strip holder or carrying case.

Neo-Diafant Model V

Popular high-quality projector for use with either 2 by 2 in. slides or 35mm. film strips. Note these outstanding features: A highly perfected mirror-condenser system ensures the maximum light output; Patrinst 100mm. $f/2.5$ coated lens gives brighter screen image; Heating during use is minimised by an ingenious triple-walled housing; Light source is a 250-watt lamp connected directly to mains supply; Incorporates optical condenser system, heat absorbing filter, lamp centring device, vertical and horizontal tilting knobs, and built-in switch; Sturdy all-metal construction finished in satin grey enamel; Complete with slide attachment, film strip holder, 250-watt lamp, lens cap, and 9ft. of flex.



KODAK AIDS FOR COLOUR ENTHUSIASTS

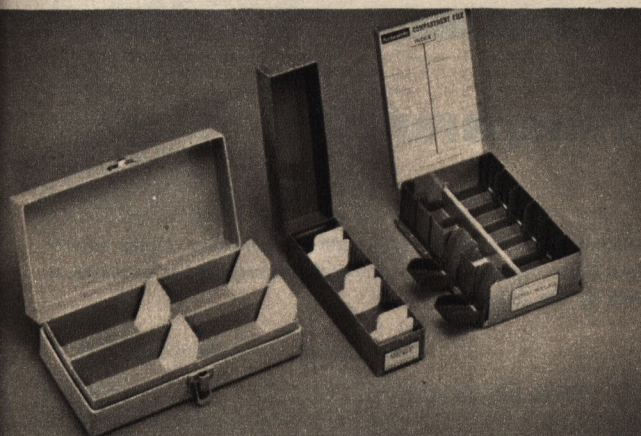


REGAL PROJECTION STAND

(Close right.) Has a collapsible tubular steel frame with 18 x 12in. steel platform; all finished in light-grey crackle enamel. Strong chromium support braces provide rigidity; rubber feet prevent movement. Also in adjustable-height model.

REGAL SCREENMASTER TRIPOD SCREEN

(Far right.) Gives new life to your home movies and Kodachrome slides — thanks to brilliant glass-beaded surface which is kept flat and drum-tight by a special spring-roller tension. Has its own built-in tripod stand; folds up for easy transport and storage. In sizes — 30 x 40in., 39 x 52in., and 45 x 60in. Matte white "Cadet" 30 x 40in. also available.



KODASLIDE FLEXO FILE

(Left.) Gives low-cost storage for valuable Kodachrome slides. Holds up to 340 cardboard or 224 glass 2 x 2in. slides. In reinforced light-grey cardboard with sturdy metal catch.

KODASLIDE FILE BOX

(Centre.) Robust all-metal construction keeps precious slides safe from knocks and dust. Accommodates up to 140 cardboard, or 55 glass slides. With five movable separators and press-spring catch.

KODASLIDE COMPARTMENT FILE

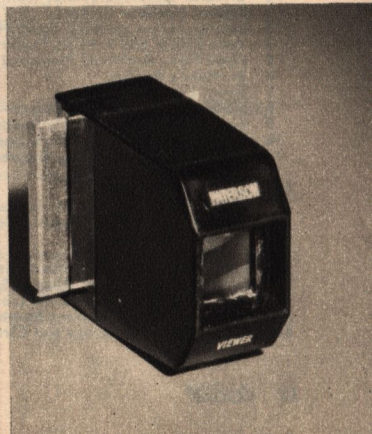
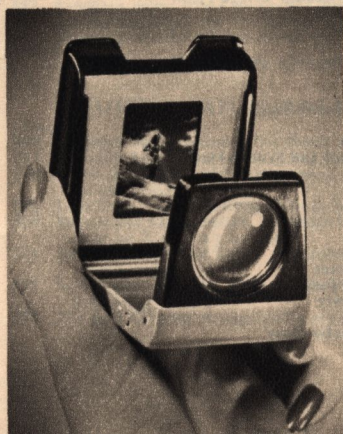
(Right.) Features twelve handy swing-out compartments for convenient access to groups of slides. Each compartment holds 20 cardboard or eight glass (or metal) slides. In attractive hamerglow finish. Index inside lid.

KODASLIDE POCKET VIEWER

(Close right.) Sturdy, compact viewer for 2 x 2in. slides — four times magnification. Has ground and polished optical glass lens. Size when folded — 2½in. x 2¼in. x ¾in. Accepts cardboard, metal, and glass mounts. Moulded in sturdy plastic.

PATERSON SLIDE VIEWER

(Far right.) Fine quality lens gives excellent magnified picture with stereoscopic effect. Attractively moulded in black plastic. Twenty 2 x 2in. cardboard slides can be carried inside the body of the viewer.





Kodachrome Kodalide Transparencies

- ★ *Australian Scenic Interest*
- ★ *Historical and Topical Events*
- ★ *Miscellaneous Overseas Views*

Kodachrome Kodalide Transparencies are full colour 35mm. natural colour slides mounted in 2" x 2" cardboard mounts and available as shown on the following list.

"SYDNEY"

- No.
- 1 Circular Quay and Sydney from Harbour Bridge Pylon
 - 2 Sydney Harbour Bridge
 - 3 George Street showing Town Hall
 - 4 York Street and A.W.A. Tower
 - 5 Hyde Park, Archibald Memorial Fountain and Anzac Memorial
 - 6 St. Mary's Basilica
 - 7 Bondi Beach
 - 8 Surfers Shooting the Breakers—Bondi Beach
 - 9 Surf Board Riding—Manly Beach
 - 10 Floral Clock—Taronga Park Zoo
 - 11 The Spit Bridge showing Showboat and Sydney Heads
 - 12 Central Railway Station
 - 518 St. James' Church
 - 519 Martin Place
 - 520 Government House
 - 521 Sydney University
 - 522 National Art Gallery
 - 523 Old Mint Building, Macquarie Street
 - 524 Commercial Buildings, City of Sydney
 - 525 Macquarie Street and Public Library
 - 526 Macquarie Street, looking South
 - 527 Sydney Harbour Bridge and Circular Quay

"MELBOURNE"

- 13 Collins Street—Melbourne's Famed Thoroughfare
- 14 Parliament House
- 15 The Public Library and National Gallery
- 16 Flinders Street Railway Station
- 17 The Shrine of Remembrance
- 18 River Yarra and Government House
- 19 City Skyline across River Yarra
- 20 Government House
- 21 Bourke Street showing Post Office
- 22 Pioneer Women's Garden in Alexandra Gardens
- 23 Captain Cook's Cottage—Fitzroy Gardens
- 24 Collins Street looking West
- 528 Shrine of Remembrance and Centenary Memorial Fountain
- 529 St. Kilda Road and City Skyline
- 530 Exhibition Building
- 531 Carpentaria Square Fountain, Spring Street
- 532 St. Kilda Road
- 533 St. Kilda Beach
- 534 St. Paul's Cathedral, across River Yarra
- 535 Autumn tints, Healesville, Victoria

"BRISBANE"

- No. 25 View of Brisbane City
- 26 City Hall from Albert Street
- 27 King George Square
- 28 Brisbane River—Victoria and Grey Street Bridges
- 29 Storey Bridge from Botanical Gardens
- 30 St. Stephen's Cathedral
- 31 University, St. Lucia
- 32 Eagle Farm Aerodrome
- 33 The Oasis—Sunnybank
- 34 Peerie Bight and Customs House
- 35 Anzac Square and War Memorial
- 36 General Hospital
- 536 Looking across City to South Brisbane
- 537 Methodist Church Dental College
- 538 Poinciana Tree—Brisbane River

"ADELAIDE"

- 37 Adelaide from Colonel Light's Statue, Montefiore Hill
- 38 St. Peter's Cathedral
- 39 University Bridge and Torrens Banks
- 40 War Memorial, North Terrace
- 41 North Terrace West from top of Shell Building
- 42 Government House and Gardens from top of Shell Building
- 43 King William Street looking South from Grenfell Street Corner
- 44 Parliament House
- 45 Railway Station from North Side of River Torrens through trees near Memorial Courts
- 46 City Bridge, King William Street
- 47 The Botanical Gardens
- 48 View of Adelaide

"PERTH"

- 49 Perth from King's Park, showing Swan River
- 50 King's Park—Tea Kiosk overlooking Swan River
- 51 St. George's Terrace—Perth's Business Centre
- 52 St. George's Terrace from Treasury Corner
- 53 Hay Street—Perth's Main Shopping Centre
- 54 Perth Town Hall featuring Historic Clock Tower
- 55 Well known London Court—St. George's Terrace
- 56 Inner View of London Court
- 57 Unique Chiming Clock—London Court, Perth
- 58 Famous Perth University—Winthrop Hall and Tower
- 59 Perth University—The Garden and Ornamental Pond
- 60 Perth's Modern Post Office and Commonwealth Bank

"PICTURESQUE TASMANIA"

- 61 Constitution Dock, Mt. Wellington in the background
- 62 Hobart Bridge, Floating Road across the Derwent River
- 63 Convict-built Buildings in Picturesque Hobart
- 64 Government House. A bit of Old England
- 65 Hobart looking across the Derwent from Bellerive
- 66 Franklin Square. One of Hobart's colourful parks
- 67 Launceston from Trevallyn. King's Bridge in foreground
- 68 The Cataract Gorge from King's Bridge
- 69 Launceston General Post Office and Tourist Bureau
- 70 The First Basin, the Swimming Pool and Gorge Bridge
- 71 The Hart Conservatory
- 72 Entally House
- 343 River Derwent, New Norfolk
- 344 Autumn, New Norfolk
- 345 St. Mark's Church, Campbelltown
- 346 Table Cape, Wynyard
- 347 Lake St. Clair, Cynthia Bay
- 348 Nymph's Bath Chamber, Mole Creek Caves
- 349 The unconsecrated church, Port Arthur
- 350 Richmond Bridge, Coal River. The oldest stone bridge in Australia, 1824
- 542 Powder Mill, Port Arthur, Tasmania
- 543 Mt. Wellington from Bellerive
- 544 The Hazards, Coles Bay, Tasmania
- 545 Mt. Wellington from Hobart Docks

"CANBERRA—AUSTRALIA'S CAPITAL CITY"

- No. 182 Parliament House and King George V Monument
- 183 Canberra Civic Shopping Centre
- 184 Historic St. John's Church
- 185 Hotel Canberra
- 186 American Embassy
- 187 War Memorial and Pool of Remembrance
- 188 Commonwealth Observatory, Mt. Stromlo
- 189 Colourful Street Scene, Canberra
- 539 Prime Minister's Lodge
- 540 Parliament House
- 541 St. Andrew's Presbyterian Church

"BALLARAT/GEELONG"

- Ballarat**
- 449 Panoramic View of Ballarat from Brown Hill
- 450 Sturt Street Gardens
- 451 Eureka Stockade
- 452 Begonia House, Ballarat Gardens
- Geelong**
- 453 Eastern Beach Gardens and Waterfront
- 454 Eastern Beach
- 455 Moorabool Street
- 456 Art Gallery, Johnston Park

"BLUE MOUNTAINS—JENOLAN CAVES"

- 73 Echo Point, Katoomba
- 74 Mt. Solitary and Jamieson Valley
- 75 The Three Sisters from Echo Point
- 76 Katoomba Falls
- 77 The Orphan Rock and Ruined Castle
- 78 The Bridal Veil Falls, Leura
- 79 The Caves Express on Mt. Boyce, near Mt. Victoria
- 80 The Grand Arch, Carlotta Arch, Blue Lake and Pinnacle Rock, Jenolan Caves
- 81 The Caves House, Jenolan
- 82 The River Styx
- 83 The Minaret, River Cave
- 84 The Grand Shawl, River Cave

"POPULAR SYDNEY BEACHES"

- 174 Bondi Beach
- 175 Balmoral Beach
- 176 Manly Pool
- 177 Manly Beach
- 178 Newport Beach
- 179 Whale Beach
- 180 Palm Beach
- 181 Palm Beach and Barrenjoey, Broken Bay

"SOUTHERN QUEENSLAND BEACHES"

- 222 Tweed Heads—Queensland New South Wales Border Fence
- 223 Burleigh Heads and the Beach from Miami
- 224 Burleigh Heads. A view of the township and beach from the Koala National Park
- 225 Surfers Paradise. A typical southern Queensland beach scene
- 226 Kirra Beach, Coolangatta. Holiday mecca of the south
- 227 Pandanus palms fringe southern Queensland's Golden Coast
- 228 Currumbin Beach and the famous Elephant Rocks
- 229 Queensland's Gold Coast stretches south to the N.S.W. border

"AUSTRALIAN SURF LIFE-SAVING CARNIVAL"

- No. 270 National Surf Carnival—The March Past
- 271 Bronzed Australians representing Surf Clubs from all States of Australia
- 272 Alarm Reel Race. Straining sinews as teams assist beltman in their race to the buoy.
- 273 Line Drill. Competitions assist in maintaining life-saving standards
- 274 Rescue and Resuscitation. Modern technique has saved more than 70,000 lives on Australia's Beaches
- 275 Surf Ski Race—The Start. Australian invention has proved itself in surf rescue work
- 276 Surf Boats. World's most thrilling surf sport is a training for serious life-saving
- 277 The Surf Carnival Arena—half a mile of golden beach

"VICTORIAN BEACHES"

- 430 Frankston Beach
- 431 Mornington
- 432 London Bridge, Portsea
- 433 Stone Jetty and Beach, Sorrento
- 434 Point Lonsdale
- 435 Lorne
- 436 Great Ocean Road
- 437 Point Road, Knight—Anglesea

"THE GREAT BARRIER REEF"

- 230 Whitsunday Passage—one of the many groups of islets within the Barrier Reef
- 231 The beach at Brampton Island
- 232 Brampton Island—View from the beach
- 233 Lindeman Island—the settlement nestles beneath the palms
- 234 Seaforth Island
- 235 South Mollie Island—rounding Spion Kop, settlement in distance
- 236 Holiday settlement on the crescent beach of South Mollie Island
- 237 The Tropic Outlook—the beach at South Mollie Island
- 246 The Launch arriving at Magnetic Island, Townsville in the distance
- 247 Magnetic Island. The Jetty at Picnic Bay
- 248 The Hotel Magnetic faces the Coral Strand of Picnic Bay
- 249 Arcadia (Magnetic Island) tourist mecca beneath swaying coconut palms
- 250 Cabins set beneath tropic foliage at Arcadia
- 251 Reefing at low tide on Jeffrey's Bay, Magnetic Island
- 252 Alma Bay. The settlement fringes this popular swimming resort
- 253 The rugged coastline and turquoise sea at Magnetic Island
- 262 Green Island—a tropical coral atoll 18 miles from Cairns
- 263 Green Island—a palm fringed view of the jetty and coral strand
- 264 On the Coral Reef at low tide
- 265 A group of coral formations on the reef at Green Island
- 266 Soft coral surrounds the glorious mantle of the Giant Clam
- 267 The stone fish—ugly terror of the Barrier Reef waters
- 268 Brilliant tropic fish flash among the corals of Green Island
- 269 Sunset at Green Island
- 546 Left: Butterfly Fish (Chaetodon). right: Surgeon Fish (Zebrasoma)—Green Island
- 547 Demoiselle, (Pomacentrus)—Green Island
- 548 Angler Fish (Pterophrinoides)—Green Island
- 549 Butterfly Cod (Brachirus Zebra)—Green Island

"TOWNSVILLE, GATEWAY TO TROPIC AUSTRALIA"

- 238 Townsville on Cleveland Bay—View from Castle Hill
- 239 Townsville from the sea—Castle Hill rises 933ft. behind the town
- 240 Shipping at Townsville jetty from Pilot Hill, Magnetic Island in the distance
- 241 North Queensland Railway's Principal Station at Townsville
- 242 Luggers moored alongside wharves on Townsville River Front
- 243 The Queen's Hotel with its 300ft. frontage facing the Strand
- 244 Townsville's Tropic Hospital—Most modern in Queensland
- 245 Flinders Street, Townsville, a typical tropical thoroughfare

"CAIRNS"

- 254 A street scene in tropical Cairns—The Traveller's Palm
- 255 Cairns. A view of the waterfront from Trinity Bay
- 256 Freshwater Valley—A view toward Cairns from Red Bluff
- 257 Abbot Street, Cairns, a busy thoroughfare in a tropic city
- 258 Barron Falls. The river crashes 800ft. to the gorge below
- 259 A modern rail motor entering Kuranda Station
- 260 Barron Falls. The lower falls and Cathedral Rock
- 261 The famous Stoney Creek Falls on the rail ascent to Barron Gorge

"AUSTRALIAN FLORA AND FAUNA"

- 134 Flannel Flower (*Actinotus flianthi*)
- 135 Waratah (*Telopea speciosissima*)
- 136 Christmas Bush (*Ceratopetalum gummiferum*)
- 137 Wattle (*acacia decurrens*)
- 138 False Sarsparilla (*Hardenbergia violacea*)
- 139 Christmas Bell (*Blandfordia nobilis*)
- 140 The Koala or Native Bear (*Phascolarctos Cinerus*)
- 141 Great Grey or Forester Kangaroo (*Macropus Major*)
- 142 Spiny Anteater or Native Porcupine (*Tachyglossus Aculeatus*)
- 143 Duckbill Platypus (*Ornithorhynchus Anatinus*)
- 144 Emu (*Dromaius Novae Hollandiae*)
- 145 Kookaburra or Laughing Jackass (*Dacelo Gigas*)
- 422 Kangaroo Paw (*Anigozanthos bicolor* Endl.) and Blackboy (*Xanthorrhoea*) in background
- 423 Christmas Tree (*Nuytsia floribunda* (Labill) R. Br.)
- 424 Swan River Myrtle (*Hypocalymma robustum* Endl.)
- 425 Drosera in foreground and Coral Vine (*Kennedya coccinea* Vent.) in background
- 426 *Hakea undulata* R. Br.
- 427 *Dryandra nivea* R. Br.
- 428 Wattle (*Acacia pulchella* R. Br.)
- 429 Flowers (*Grevillea bipinnatifida* R. Br.)
- 438 Koala Bear
- 439 Koala Bear
- 440 Koala Bear

"CENTRAL AUSTRALIA"

- 286 Ayers Rock—view from three miles distant
- 287 Ayers Rock—watercourses on S.W. side
- 288 Ayers Rock—Mala's Cave of Aboriginal legend
- 289 Ayers Rock—view from summit, showing waterholes
- 290 Ayers Rock—kangaroo tail rock slab on north side, caused by wind erosion
- 291 Mt. Olga—1500ft. above plain. View of domes from north
- 292 Mt. Olga—west domes from three miles distant
- 293 Mt. Connor—800ft. above plain. World's largest residual mountain
- 294 Alice Springs township from Anzac Hill
- 295 Emily Gap—Alice Springs
- 296 Aboriginal wall paintings at Emily Gap
- 297 Finke River at Glen Helen Gorge
- 298 Vertical rock formation, Glen Helen Gorge
- 299 The road down the Finke River bed in the "dry"
- 300 The salt crust on a clay pan near Alice Springs
- 301 River Red Gums—Finke River
- 302 View of Macdonnell Ranges from main road
- 303 Stanley Chasm, a cleft in the mountain, 16ft. wide and several hundred feet deep
- 304 Calitris (Native Pine) and Ghost Gum in Palm Valley
- 305 Beautiful Mt. Hermannsburg
- 306 The Sphinx Rock—Amphitheatre, Palm Valley
- 307 Aboriginal Family, Palm Valley
- 308 Waterhole scene in Palm Valley
- 309 Finke River Bed at Palm Valley
- 310 Typical ant hill of Central Australia
- 311 Central Mt. Stuart—Turkeys Nest Bore Dam
- 312 Barrow Creek—flat tops (residual mountains)
- 313 The Devil's Marbles. These cover an area of several square miles
- 314 Devil's Marbles—another formation
- 315 The Flying Doctor Plane
- 316 Mt. Isa Mine
- 317 Georgina River Bed in the "dry"

"AUSTRALIAN ABORIGINES"

- 359 The Walbri Tribe—a group of "song men"
- 360 A Guardian of Snake Rock—sacred tribal meeting place
- 361 An Aboriginal girl picking bush flowers and seeds
- 362 Aboriginal girl sifting winnock seeds in her pitchi dish
- 363 Natives hunting
- 364 Native dancers smearing themselves with blood, prior to initiation ceremony for manhood status
- 365 Native hunters at Snake Rock
- 366 The Head Guardian of Snake Rock and Aboriginal painting of mythical Snake

"LORD HOWE ISLAND AND NORFOLK ISLAND"

- 407 Lord Howe Island—Mts. Lidgbird and Gower in distance
- 408 Ned's Beach and view across the Bay, Lord Howe Island
- 409 Lord Howe Island—The Lagoon and rugged shoreline
- 410 Holiday-makers' picnic on Beach in view of Mts. Lidgbird and Gower. Lord Howe Island
- 411 Kingston, Norfolk Island—Government House in distance. Convict buildings still serve the community
- 412 Kingston, Norfolk Island—Unloading Passengers and Cargo from Landing Barge
- 413 Bloody Bridge, Norfolk Island—Scene of Tragic History
- 414 Philip and Nepean Islands, off Norfolk Island

"NEW GUINEA HIGHLANDS"

- No.
- 399 Goroka—Chief Town of the Central Highlands
- 400 Goroka Valley—Native Compound on the Hillside
- 401 Goroka Valley—a Native Village
- 402 Wahgi Valley—Native with Cassowary Head-dress
- 403 Moroma, Wahgi Valley—Natives wearing valuable Bird of Paradise Head-dresses
- 404 Wabag—Wigwam from the nearby Mountain country
- 405 Native Highland Village—a typical setting
- 406 Bulolo—A Gold Dredge flown into the Highlands

"PORT MORESBY AND PAPUAN NATIVES"

- 121 Port Moresby Waterfront
- 122 War Memorial, Port Moresby
- 123 Native Market Place
- 124 Canoes are used as House Boats
- 125 A Native Canoe
- 126 Papuan in Ceremonial Dress
- 127 Girls from Hanua Bada
- 128 Men in Festive Dress
- 129 Dancers from Rigo
- 130 Final Touches to a Dancer's Costume
- 131 Roku—a Papuan Village
- 132 Canoe Anchorage at Koki

"NEW ZEALAND"

North Island

- NZ1 Panorama of Auckland City from Mt. Eden
NZ2 Queen Street. Auckland, main business thoroughfare
NZ3 Railway Station, Auckland, with Rangitoti in the distance
NZ4 Auckland University and Albert Park
NZ5 Wellington, New Zealand's Capital, and Oriental Bay
NZ6 Oriental Bay, Wellington, and the Marine Drive
NZ7 Cable Car and Harbour background from Kelburn, Wellington
NZ8 Wellington Parliament House
NZ9 Rotorua. Whakarewarewa, bridge from village to thermal area
NZ10 Rotorua. Pohutu, New Zealand's most famous Geyser
NZ11 Rotorua. Maori meeting-house and guides in colourful native costume
NZ12 Rotorua. Frying Pan Lake, site of world's largest Geyser
NZ13 Wairakei. Devil's Cauldron
NZ14 Wairakei. Boiling Mud Pool
NZ15 Mt. Egmont in Winter, a perfect mountain cone, 8,260 feet
NZ16 Chateau Tongariro, the North Island's alpine playground

South Island

- NZ106 Lake Wanaka and Mt. Aspiring (9,975ft.)
NZ107 A Beach on Lake Wanaka
NZ108 Countrysides between Queenstown and Coronet Peak
NZ109 The Remarkables and the Kawarau River flowing from Lake Wakatipu
NZ110 Queenstown, looking towards Walters Peak (5,956ft.) and Cecil Peak (6,477ft.)
NZ111 Queenstown, the beach and tourist lake steamer
NZ112 Lake Te Anau, largest in the South Island
NZ113 Milford Sound. Luxurious hotel on fjord, mountains rise sheer to 6,000ft.
NZ114 The Hermitage at Mt. Cook, year-round alpine resort
NZ115 The Hooker River and Swing Bridge near Mt. Cook
NZ116 The Hermitage under winter snow
NZ117 Mt. Cook (12,349ft.) and the Hooker Glacier in Winter
NZ118 The Ball Hut and the 17-mile Tasman Glacier
NZ119 Lake Mapourika, a west coast gem
NZ120 The famous Franz Josef Glacier descends nearly 9 miles from 10,000ft.
NZ121 Looking down the Franz Josef Glacier to lowest level, 700ft.

"MISCELLANEOUS"

- 133 Her Majesty Queen Elizabeth II
318 Her Majesty Queen Elizabeth II and the Duke of Edinburgh
415 CARTOON TITLE: "Let's Get Started"
416 CARTOON TITLE: "Interval"
417 CARTOON TITLE: "That's All, Folks"
418 Interval
419 The End
420 Interval
421 The End
513 Australian Atlas—The Continent
514 Australian Atlas—New South Wales and Victoria
515 Australian Atlas—South Australia and Northern Territory
516 Australian Atlas—Western Australia
517 Australian Atlas—Queensland
550 TITLE: Shots from Overseas
551 TITLE: Holiday Memories
552 TITLE: An Important Occasion

"ROYAL TOUR 1954:

H.M. QUEEN ELIZABETH II VISITS AUSTRALIA"

- 146 Royal Yacht "Gothic" at sea approaching Australian shores
147 Sydney Harbour Welcome to the Royal Yacht "Gothic"
148 Her Majesty Steps Ashore from the Royal Barge, Farm Cove, Sydney
149 The Royal Progress through Sydney Streets
150 The Queen Reviews the Guard of Honour—Government House, Sydney
151 Her Majesty Arrives at the State Banquet, Sydney
152 The Queen attends Divine Service, St. Andrew's Cathedral, Sydney
153 Fireworks Display on Sydney Harbour celebrating Her Majesty's Visit
154 Her Majesty in Canberra—Review of Commonwealth Services in Front of Parliament House
155 The Queen arriving at the Australian War Memorial, Canberra
156 Her Majesty and the Duke of Edinburgh at the United States War Memorial, Canberra
157 Magnificent Illuminations of Houses of Parliament, Canberra, in honour of Her Majesty's Visit

"CORONATION OF

H.M. QUEEN ELIZABETH II"

- 85 Colonial Troops at Admiralty Arch
86 Guards in Trafalgar Square
87 Household Cavalry, Northumberland Avenue
88 State Procession, Embankment
89 Colonial Mounted Escort
90 Troops Marching through Piccadilly
91 The State Coach
92 The State Coach passing through Trafalgar Square
93 The Irish Coach
94 The Queen is Crowned—St. Edward's Chair
95 The Queen is Crowned—The Throne
96 The Queen is Crowned—The Homage

"THE ENGLISH SCENE"

- 190 Oxford—All Souls' College
191 Cambridge—King's College Quadrangle
192 Cambridge—Trinity College
193 Windsor Castle—Henry III Tower
194 Stratford-upon-Avon—Shakespeare's Birthplace
195 Stratford-upon-Avon—Anne Hathaway's Cottage
196 Hampton Court—Wren Facade from Grounds
197 Changing of the Guard—Mounted Life Guard
489 Famous Stonehenge on Salisbury Plain
490 Shakespeare's Memorial Theatre, Stratford-upon-Avon
491 H.M.S. "Victory", Nelson's Famous Flagship
492 York—The Roman Wall leading to York Minster
493 Glastonbury Abbey, Home of Christianity in England (A.D. 601)
494 Clovelly from the Harbour Wall
495 Buckland in the Moor. Pretty Devon cottages
496 Land's End

"LONDON"

- 198 Whitehall
199 National Gallery
200 Trafalgar Square Fountains and St. Martins in the Fields
201 Constitution Arch
202 Tower Bridge
203 Changing Sentries at Buckingham Palace
204 St. Paul's Cathedral (from blitz ruins)
205 Houses of Parliament
206 Admiralty Arch
207 Nelson's Column—Trafalgar Square
208 Big Ben and Parliament Square
209 Trafalgar Square (top View)
210 Sentry at Buckingham Palace
211 Piccadilly Circus (Top View)
212 Tower of London (from Thames)
213 Buckingham Palace and Queen Victoria Memorial
481 Australia House and St. Mary Le Strand Church
482 No. 10 Downing Street
483 All Souls' Church in Langham Place, and B.B.C. House
484 Law Courts, The Strand
485 Thames Embankment, Cleopatra's Needle
486 County Hall, Westminster
487 Panoramic view of Piccadilly and Constitution Arch
488 Old Curiosity Shop

"SCOTLAND"—The Road to the Isles

- 375 Greta Green Blacksmith's shop—famous for romantic marriages
376 Blackfaced sheep grazing near Loch Ness
377 The Cullins—Isle of Skye
378 Loch Tummell—Queen's View
379 Highland cattle on the Isle of Skye
380 The Crofter's Cottage, Isle of Skye
381 Pitlochry Dam and Salmon Ladders
382 Loch Katrine in the Trossachs

"EDINBURGH"

- 351 Edinburgh Castle built 11th century. View from Castle Esplanade. The commencement of the Royal Mile
352 Princes Street. Acclaimed as the finest street in the world. Showing gardens and Waverley Station
353 St. Giles Cathedral (Gothic), showing crown steeple and eight flying buttresses. History dates back to 9th century
354 The Scott Monument. 200ft. high, erected in 1840 in memory of Sir Walter Scott
355 Floral Clock in Prince's Gardens
356 Holyrood Palace. Erected by James IV in 1503, now used as an occasional residence of the Royal Family. The end of the Royal Mile
357 John Knox's House. A striking survival of street architecture of the 16th Century Reformation Period
358 Forth Bridge. Built 1883/1890. One and a half miles long—height 152ft. above water, 360ft. to top of span

"ROME"

- 214 The Fountain Delle Terme by Rutelli. Noted for its powerful jet
215 The Piazza Novona
216 The Roman Forum—with Palatine Hill in background
217 The Scala Di Spagna (Spanish Steps) leading to the Church of St. Trinita de Monti
218 The Castel Sant'Angelo erected in A.D. 136 by Hadrian, as a tomb for himself and succeeding Caesars of his family. Shows River Tiber in foreground and part of Bridge of Sant'Angelo
219 View of the Via Della Conciliazione leading to St. Peter's
220 View from entrance to St. Peter's
221 The Roman Forum—showing Colosseum in background

"ROME"—continued

- No.
327 The Piazza Colonnade—carriage entrance. Erected by Bernini in 1667
328 The Pantheon, erected in 27 B.C. by Marcus Agrippa to commemorate his victory at Actium over Anthony and Cleopatra
329 The Fontana Di Trevi. Erected by order of Pope Clement XII in 1735. The largest and most celebrated public fountain in Rome.
330 The Arch of Titus, A.D. 81. Erected to commemorate the victories of Titus and Vespasian over Jerusalem at the conquest in A.D. 70. The Arch is entirely faced with Pentelic marble
331 Rome—panoramic view from the Janiculum
332 The Forum Italico, showing some of the modern sculpture work
333 Vatican Swiss Guard
334 The Colosseum

"VENICE"

- 319 The Danieli—former Palace
320 The Rialto Bridge
321 St. Mark's Church
322 Entrance Mosaic, St. Mark's Church
323 The Bridge of Sighs
324 Cathedral Santa Maria Della Salute
325 Canal Scene
326 The Campanile and Doge's Palace

"SCENES OF ITALY"

- 457 Amalfi—Along the beautiful Corniche Road
458 Pompeii—Buried by volcanic lava A.D. 79. Corner of City Square
459 Pompeii—Main Street, showing raised boulders to control speed of chariots
460 Rome—The Colosseum, completed A.D. 80
461 Rome—The Forum from Palatine Hill
462 Rome—The Monument to Victor Emanuel II
463 Rome—The Temple of Vesta Church of S. Maria in Cosmedin, 6th Century
464 Tivoli—Fountains of the Villa D'Este, built in 1549
465 Assisi—Church of St. Francis
466 Florence—Uffizi Art Gallery
467 Florence—Church of Santa Maria Novella, begun 1278
468 Florence—Ponte Vecchio
469 Pisa—The Leaning Tower
470 Venice—Clock Tower. Renaissance style, 1496
471 Venice—Palazzo Ducale and Columns of St. Mark and St. Theodore (12th Century)
472 Venice—Scene on Grand Canal

"SCENES OF HOLLAND"

- 335 Amsterdam. Open-air restaurant, Hotel Lido. Looking across to the Leide Bosje (Gardens)
336 Amsterdam. Reflections in the Singel Gracht (canal)
337 Alkmaar. Cheese porters at the cheese market.
338 Leiden. Left bank, fruit and vegetable market. Right bank, flower market. Covered bridge, butter market
339 Leiden. City coat of arms made of tulip petals. Markets in distance
340 Leiden. An old Dutch mill
341 Keukenhof Gardens. Near Lisse, in the heart of the tulip-growing area
342 Keukenhof Gardens attract thousands of visitors from March to May each year

"PARIS"

- 158 Notre Dame
159 Rue Royale and Church de La Madeleine
160 La Place Du Carrousel
161 Place Montmartre and Sacre Coeur
162 Eiffel Tower and Gardens
163 Arc de Triomphe
164 Le Grand Opera
165 Place de la Concorde, Fountains
166 The Left Bank
167 View from Tower of Notre Dame
168 Luxembourg Gardens
169 Palais de Chaillot
170 Church de La Madeleine—Near View
171 Les Invalides
172 Sacre Coeur—Near View
173 Eiffel Tower—Near View
473 The Gardens, Palace of Versailles
474 Pleasure Boats on the Seine
475 A view in Montmartre
476 Cathedral of Notre Dame from South Bank
477 Palais de Chaillot from the Eiffel Tower
478 The Moulin Rouge
479 The Pantheon
480 Artists' Corner at La Mere Catherine

"UNITED STATES OF AMERICA"

- 367 New York. Skyline from the Hudson River ferry
368 New York. Manhattan Skyline at night
369 New York. Central Park scene in winter time
370 Nevada. Reno City
371 Los Angeles. Oil wells near main road
372 San Francisco. View of the city from the hill looking towards Golden Gate Bridge
373 San Francisco. Shopping centre, showing modern car parking bays
374 San Francisco. China Town and its famous restaurants
383 Washington, D.C.—The Capitol
384 Salt Lake City, Utah— Entrance Hall of State Capitol
385 A Redwood Tree, 3800 years old—Yosemite Grove
386 View of Mirror Lake—Yosemite Valley
387 Yosemite Falls
388 Arizona—Bryce Canyon Fairland
389 Arizona—The Painted Desert
390 Arizona—Golden Canyon—Colorado River

"SOUTH AMERICA"—Rio de Janeiro, Brazil

- 391 Rio de Janeiro—Corcovado from Scarvo
392 Rio de Janeiro—Copacabana Beach
393 Rio de Janeiro—View from Corcovado to Sugar Loaf
394 Rio de Janeiro—From the Govea Road
395 San Salvador—Elevator from Citate Em Baika to Citate Em Cima
396 Bahia—San Francisco Church
397 Belem—Potteryware Market
398 Quitandania—Hotel Petropolis

"SCENES FROM SCANDINAVIA"

- Copenhagen, Denmark**
441 "The Little Mermaid"
442 The Stock Exchange, Old Copenhagen
443 Nyhavn from New King's Square, Naval War Memorial in foreground
444 Main Shopping Street—Nicolay Tower in background
Stockholm, Sweden
445 Stockholm from the Town Hall Steps
446 Looking towards the "Slussen", fishing nets in foreground
Norway
447 Bergen—Mediaeval Buildings on far side of Quay, markets in foreground
448 Neroy Valley—looking towards Gudvangen on the Sogne Fjord

"SCENES OF EGYPT"

- 497 Suez—An Arab Felucca on the Canal
498 Cairo—Mosque El Rifay and Panorama of Cairo
499 Cairo—Pottery Shop, Old Markets
500 Cairo—Arab sailing barge on the Nile, and Bulaq Bridge
501 Cairo—Camel carriers going to market
502 Giza—The Pyramid of Cheops
503 Giza—The Sphinx and Great Pyramid
504 Giza—Arab Cemetery and Great Pyramid

"SINGAPORE"

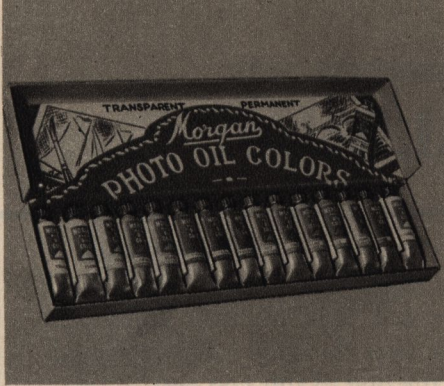
- 505 High Court and Municipal Buildings from the Padang
506 Raffles Hotel
507 Chinese broom peddler and street scene
508 Modern office buildings, with barges passing under Anderson Bridge
509 Dhows and barges on the Singapore River
510 Statue of Buddha in Hawpah Villa
511 Panoramic view of City and Elizabeth Walk
512 Loading rubber on to a river barge

"SANTA CLAUS IN AUSTRALIA"

- 278 Wendy's dream of Santa Claus' visit
279 Santa's arrival—Land ho! Australia ahead
280 Santa Claus makes a happy start to a busy day
281 Santa in his toy house selecting gifts for girls and boys—"Now let me see, who's been good?"
282 It's Christmas Eve—Santa's off on a busy night's work in his magic jeep train
283 Santa Claus goes down the chimney in a country town—Shhh! Not a sound
284 Wendy awakes on Christmas morning—"Look at all my lovely toys—Santa remembered me after all"
285 Santa takes a nap before Christmas dinner, after a job well done



A



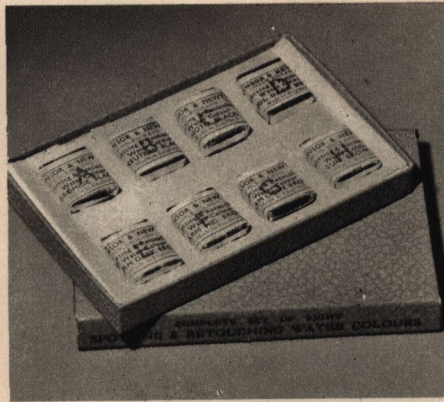
B



C



D



E



F

Colouring, Retouching, and Mounting

(A) **Kodak Oil Colour Set** — Consists of 12 oil colours, thinning medium, cleaning fluid, sizing fluid, palette, cotton wool swabs, and applicator sticks. With instruction book on how to colour.

(B) **Morgan Photo Oil Colour Outfit** — Has 14 different colours capable of producing almost any shade or tint. Also has reducing medium and an instruction leaflet.

(C) **Austral Transparent Water Colours** — Excellent for all colouring purposes. In sheets of stamps of 10 different colours — each stamp dissolves in water to make dye. With instructions.

(D) **Stabilo Coloured Pencils** — Ideal for colouring photographs, maps, drawings, etc. They're easily erased; will dissolve in water. Available in 24 different colours, singly or in sets.

(E) **W. & N. Spotting and Retouching Water Colours** — For the removal of scratches or dust marks on prints, or the reduction of flesh shadows, etc. Available in sets of eight cakes of various blacks and browns.

(F) **Ideal Photo-Corners** — For mounting prints in albums. Are strongly made and sure to stick quite fast. Available in a wide range of colours. In boxes of 100.

W. & N. Spotting Brushes — Accurately made from selected sable hair firmly set in a nickle mount; wooden handle. In a range of sizes from No. 00 to No. 6.

Staedtler Tradition Pencils — Specially suited to delicate retouching work on either negatives or prints. Recommended for use with Kodak Retouching Medium. Available in 3H, 2H, H, HB, B, 2B, 3B and F grades.

Johnson Pen-Nib Print Trimmer — An invaluable yet economical outfit comprising twenty nibs and one holder. The nibs have a razor sharp cutting edge for trimming prints, etc.

Kodak Oil Medium — A very light application over the print prepares the surface for colouring with pencils, such as Stabilo Pencils. Excellent as an aid to blending colours.

W. & N. Photo Tints — Are perfectly pigmented, highly concentrated, easily controlled and applied. Outfit No. 1 — a water colour set containing eight colours. Outfit No. 2 — an oil colour set containing eleven colours and other necessary accessories for successful hand colouring.

Kodak Photo Paste — Excellent for mounting snapshots in albums — no bulges, no curled corners. Prints lie flat and will not cockle or stain. In 2oz. tube, 4oz. and 16oz. jars.

Kodak Liquid Glue — Strong all-purpose glue; ideal for mounting prints, gluing leatherette to cameras and all such minor darkroom jobs. In 2oz. tube.

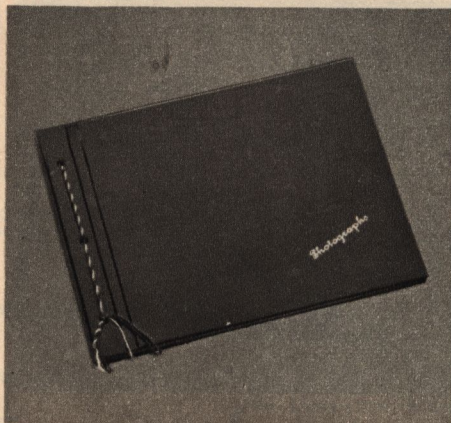
Protect Your Snapshots with KODAK ALBUMS

... for Kodak Albums help you to preserve for tomorrow the fun of the snapshots that you make today. They provide you with an easy-to-keep yet permanent picture record that you will enjoy and treasure in the years ahead. Check over the wide range of Kodak Albums shown here ... then select the one to suit you best.



GLEN

Neat and attractive in a range of rich-looking leatherette covers in various colours. Of loose-leaf construction and firmly secured with a tasselled silk cord. The cover is gold stamped "Photographs". 20 grey leaves. Size 10½ x 8½ inches.



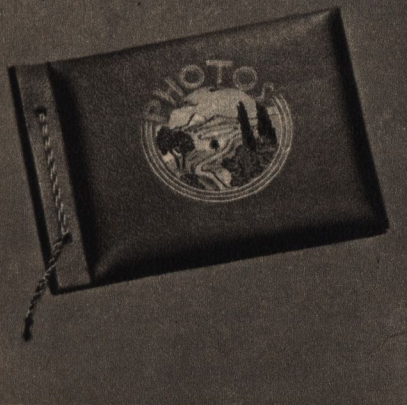
RHODES

A serviceable low-priced Album — just the type for the beginner in photography. The stiff covers give added protection, whilst the loose-leaf style permits the addition of extra leaves. Available in assorted colours and firmly bound with a tasselled cord. 20 grey leaves. Size 10 x 7 inches.



ORMOND SERIES

Features a beautifully-embossed landscape motif set within its gold stamped circular design. Its stiff padded cover is available in an assorted range of colours, each being firmly eyeletted and bound with a strong cord to match. 20 blue-grey leaves. Size IIIA: 7½ x 9½ inches.



VICTOR

An attractive all-purpose Album specially interleaved to protect your snapshots. The stiff board cover is surfaced with grained art paper and gold stamped "Photo Album," whilst the binding and corners are covered with leatherette. Loose-leaf style, with strong screw-post binding. No. 1, 25 grey leaves, size 10 x 8½ inches. No. 2, 40 grey leaves, size 10 x 8½ inches.



CAMERA STUDIES

Its attractive coat-of-arms cover design adds a touch of distinction, thus making it ideal for gift purposes. This theme is further enhanced by the gold lettered "Camera Studies." It is available in a range of assorted coloured covers which are eyeletted and corded to match. 20 blue-grey leaves. Size 4: 9½ x 10½ inches.



REGAL

A smart and attractive range with padded leather-type cloth covers — various colours in single and two-tone effects. Each is gold stamped “Photographs,” eyeletted and secured with a colourful tasselled cord. 22 blue-grey leaves. No. 1 Size $8\frac{1}{2} \times 10\frac{1}{4}$ ins. No. 3 Size $10\frac{1}{4} \times 12\frac{1}{4}$ ins. No. 5 Size $12 \times 14\frac{1}{2}$ ins. Spare leaves for each size available separately.



ROYAL

Royal in name, appearance and quality. Has attractively-patterned padded leather cover embossed with the word “Photographs.” Its efficiency and permanence are enhanced by the use of modern metal sockets and screws for binding. 48 leaves. Size 11×9 inches. Set of 24 spare leaves, available separately.



RENOWN

High quality and distinctive — with stout padded cover of polished patterned leather and embossed with modern silver diagonal lines. Covers available in a range of colours. Firmly eyeletted and secured with a strong adjustable plastic strap to match. A worthy Album to protect your treasured snapshots. 24 grey leaves. No. 1 Size 10×9 inches. No. 2 Size $13\frac{1}{2} \times 9\frac{3}{4}$ inches. No. 3 Size $13\frac{1}{2} \times 12$ inches. Sets of 24 spare leaves available separately.



STRAND

A rich-looking and sturdy album in which to treasure your favourite snapshots. It features two-toned leather covers which are eyeletted and strongly corded. Gold-stamped “Photographs.” 22 blue-grey leaves. No. 1 Size $8\frac{1}{2} \times 10\frac{1}{4}$ inches. No. 2 Size 8×13 inches. No. 3 Size $10\frac{1}{4} \times 12\frac{1}{4}$ inches. No. 4 Size $10\frac{1}{4} \times 14\frac{1}{2}$ inches. No. 5 Size $12 \times 14\frac{1}{2}$ inches. Spare leaves for each size available separately.

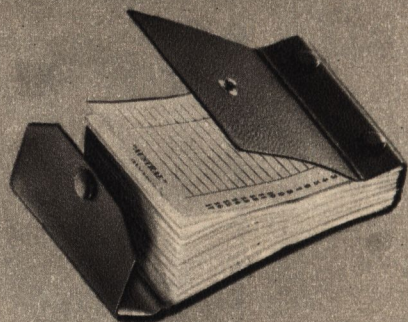


AUSTRAL NEGATIVE ALBUM

Contains 100 transparent envelopes consecutively numbered to correspond with built-in index. Negatives can be examined without removing them from their transparent covers. Finished in attractive black leatherette with a push-button fastener. Available in $2\frac{1}{4}$ by $3\frac{1}{4}$ in. size to accommodate 100 negatives, and 35 mm. size to accommodate 100 negative strips (each of six frames).

STRAND SPECIAL

Special it is, too, both in construction and efficiency. Its attractive leather covers are available in an assorted range of colours, while its 4-post binding system provides for loose-leaf binding as well as absolute firmness and alignment of the leaves. Black leaves. A “special” album for that “special” job. 50 leaves. Size 12×14 inches.





**TURN YOUR SNAPSHOTS
INTO MASTERPIECES
WITH A
FRAME
FROM KODAK**

A. SLYDIN No. 9. Economical all-wood frame with slide-in back, $\frac{1}{4}$ in. embossed pattern in cream or gold finish. Reversible strut. 7 sizes. Also available with fancy corners (No. 73/42).

B. DA VINCI. Smart and elegant looking; with floral corners and attractive filigree pattern at top. In silver and antique gold. Convex glass. Reversible strut. Size 8 by 10 in.

C. REYNOLDS. Neat metal frame with floral corner pattern — in antique gold and nickel. With convex glass, mount, and reversible strut. 5 sizes.

D. HOGARTH. Smart brass frame in gilt or chrome. With convex glass, cut-out mount, reversible strut. 5 sizes.

E. TODD. Miniature Metal. For miniature portraits with gold figured frame, convex glass, and reversible strut. In oblong, oval, and round sizes.

A



B



C



D

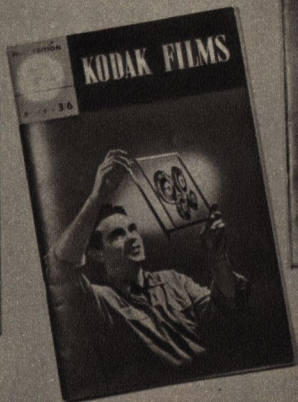
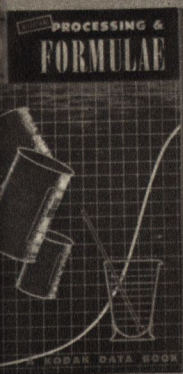


E



KODAK DATA BOOKS

... best-selling technical handbooks written by Kodak experts



Kodak Processing and Formulae

Completely up-to-the-minute with all the latest on processing principles. It tells: How a developer works; factors affecting time, temperature, agitation, activity; replenishers; stop baths; fixers; tank processing; paper development; faults in negatives. 28 pages of formulae.

Kodak Films

Prepared for the convenience of photographic craftsmen who desire more than a superficial knowledge of the Kodak range of negative materials. Fifty-two pages packed with valuable information on film properties, handling, etc., plus tables on exposure, development, and sensitometric data.

Kodak Papers

Thirty-six attractively illustrated pages crammed full with up-to-date authoritative, technical and general information on

using Kodak Sensitized Papers. It covers characteristics, selection and use of Kodak papers, plus darkroom illumination, print faults, stains, mounting, etc. Attractively illustrated.

Flash Technique

Packed with detailed information on the modern fascinating technique of making pictures by flash. Covers all types of methods such as: Flash away from the camera, indirect flash, multiple flash, flash with colour, exposures for flash.

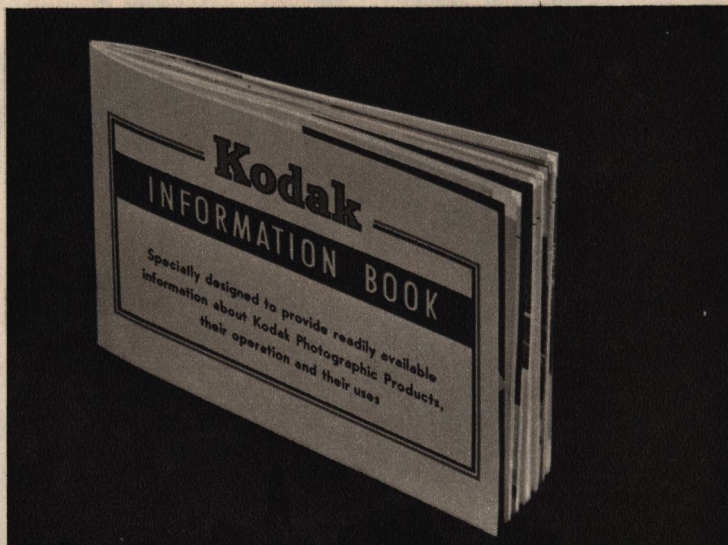
Kodachrome Film and Its Use

Here is the "inside story" on Kodachrome film — what it is, how it is made, and how to use it. Special chapters cover storage, types, filters, outdoor and indoor lighting and exposure, flash, screening, filing, cleaning, making colour prints, and technical information. Illustrated in full colour.

KODAK Information Book

Ever asked yourself the question, "How can I improve my pictures?" Then here's your answer — the new, easy-to-follow Kodak Information Book. It has been specially designed to provide readily available information about Kodak Photographic Products, their operation and their uses. It contains 48 pages packed with illustrations, text, charts and diagrams. Here are a few of the chapter titles: What Film Terms Mean; Camera Settings; f/Numbers; Picture Hints; Making the Exposure; Photoflood — Exposure and Equipment; Photoflash; Moving Subjects; Filters; Colour; Cine-Kodak Movies; Picture Clinic. An ideal book for anyone interested in, or actually practising, the hobby of photography.

KODAK 51





PHOTOGRAPHIC BOOKS . . .

to help you learn more about the fascinating hobby of photography. Here are just a few selections from the wide range:

All In One Camera Book (W. D. Emanuel)

Puts the whole of photography in a nutshell. Covers lens, filters, colour films and dozens of other features that will set you on the path to good photography.

All The Photo Tricks (E. Smith)

Gives invaluable hints on how you can get startling pictorial effects, fantastic variation of reality and amusing deceptions of the human eye, through trick photography.

Bigger And Better Enlarging (D. Nibbelink)

All techniques necessary to make a good enlargement are covered, results are analysed from both the artistic and technical viewpoints, and step-by-step instructions are given on how to make good pictures even better.

British Journal Almanac

World-famous annual containing illustrations of the works of leading exhibitors, a glossary of chemical and photographic terms, many pages of formulae for various processes, and special articles on current topics, processes and researches. Available with paper or cloth cover.

Colour Photography — How It Works And How To Work It (Kodak Ltd.)

A popular guide to the beginner in colour photography. Explains in concise simple terms the fundamentals and practices of colour. A book every aspiring amateur colour photographer should own.

Colour Photography In Practice (D. A. Spencer)

Is literally "The Bible" of colour photography — covers every aspect from explaining the colour spectrum, exposure, processing to making colour prints. Contains a wealth of knowledge to suit the most advanced colour photographers.

Developing (C. I. Jacobson)

Contains two hundred formulae and tables, with genuine advice on their practical use and basic data of their theoretical background.

Enlarging (C. I. Jacobson)

Helps professionals and amateurs alike to judge negatives and to choose apparatus, paper and chemicals all of which are essential for successful enlarging.

Exposure (W. F. Berg)

Helps you to pick the right tools and materials, suit your filters to your film and your subject, and how to determine the correct exposure.

Focal Photo Guides

This "All About" Series is illustrated with the world's best photographs and written by the world's best photographic authors. Just a few of the 72 books in the series are: All About Filters, Exposure, Composition, Processing, Colouring, Photographing Animals, People, etc. (See opposite.)

"How To Make Good Pictures" (Kodak Ltd.)

Tells everything about amateur picture making from pressing the button to mounting the finished print. It is clearly and simply written and profusely illustrated with first class pictures and diagrams. A "must" for every photographer's library.

Lighting For Photography (W. Nurnburg)

Tells of the technical roots of artificial lighting, reveals the advantages and limitations of different light sources, sketches the principles of their practical use, and gives countless suggestions as to their individual application.

Making An Enlarger (Hugo van Wadenoyen)

Gives efficient designs for eight enlargers, with numerous adaptations and refinements, based on materials available and suitable for easy construction.

My Way With The Miniature (L. Vining)

Advises the 35mm. enthusiast all about: focusing, exposure, filters, choice of equipment, processing methods, plus many other interesting and important subjects.

Photo-Amateur's Pocketbook

Is a pocket sized manual full of facts and figures. It contains a brilliant pictorial survey, a condensed technical reference library plus a diary section and a register for data entries.

Photo-Flash In Practice (G. Gilbert)

Tells how the flash works, how to work it and with what ends in view. Contains 304 fully-illustrated interest-packed pages.

The Twin Lens Reflex Camera Companion

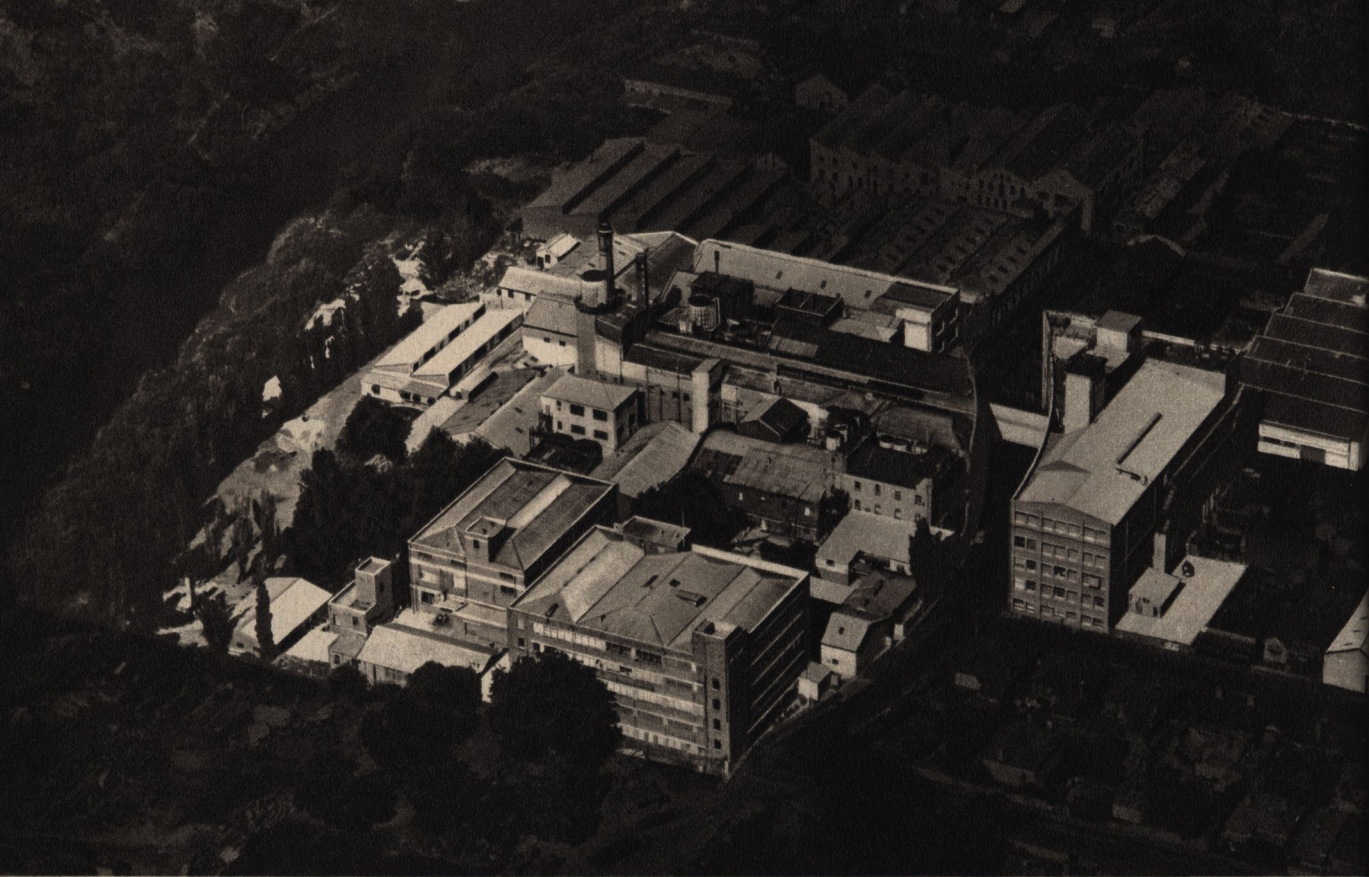
Fully explains twin lens technique both to those who have little photographic experience and to those who look for advice.

Straightforward Developing (L. A. Mannheim)

Is written in a clear and simple style to teach the beginner the fundamentals of the process. Clever illustrations lead the reader right from equipment to retouching the negative.

Straightforward Print Making (L. A. Mannheim)

It is a simple job; this book tells you equally simply in down-to-earth words and many illustrations how to go about it.



An aerial view of the 7½-acre Kodak factory at Abbotsford, Victoria.

“From Silver to Snapshots”

**— the fascinating story of how
Kodak Sensitized Materials are made**

In a fascinating air-conditioned world, free from dust yet devoid of daylight, are created the famous Kodak products so well known to all photographers. In these vast Kodak Laboratories at Abbotsford, Victoria, science holds sway... and although this mass of machines, great and small — controlled by men skilled in the manufacture of now familiar products, such as Kodak film, Kodak papers and Kodak plates — is ever at work, the process of search and research still goes on to maintain, and if possible, improve the quality and standard of the products which bear the name — KODAK.

One of the most interesting departments of the Kodak organisation is that devoted to the manufacture of silver nitrate, the first step in the making of photographic emulsion. Pure silver is placed in chemically clean porcelain jars containing nitric acid which dissolves it into a pale greenish

solution. This solution is allowed to stand, and, upon cooling, large crystals of silver nitrate form in the jars, which, when viewed by indirect light, provide a very beautiful sight. After washing — in pure distilled water provided in quantity from the engine room — the crystals are thoroughly dried. They are then stored in a vault awaiting their turn to become the truly basic ingredient in the making of sensitive emulsions.

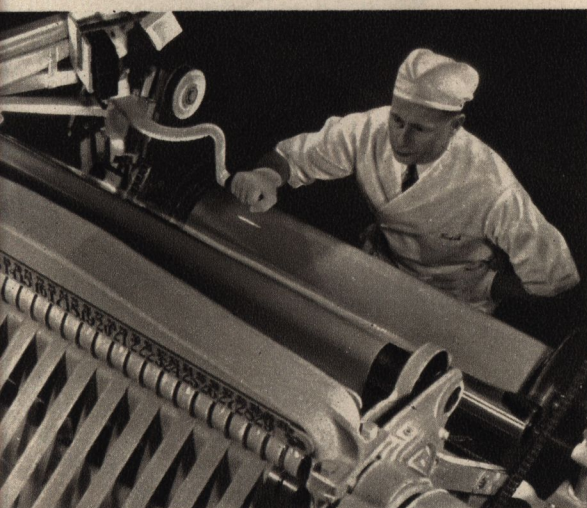
The making of light-sensitive emulsion is a diversified, extremely delicate, and highly secret process, evolved after years of patient research and experiment. The giant kettles, in which the silver nitrate solution and other ingredients of the secret formulae are mixed, seem far from scientific instruments, and yet the time controls governing these great steam-jacketed vats are gauged to split-second accuracy, to ensure a uniform efficiency and a high standard of quality in the emulsion output. This step of the process is, of course,



completed under dimly-lit safelight conditions (almost total darkness with high-speed panchromatic emulsions). Once "the brew" is ready and sample tests have been carried out to prove its quality, it is then piped direct to the coating room where it is applied to the safety film base by a very delicate process of semi-immersion.

The coating room, whilst work is in progress, is a sight worth seeing. In the dim red or green light, figures pass to and fro . . . queer sounds from slow-moving chains and the clank of machinery can be heard. Festoons of the coated material, dimly distinguished as it hangs from the lofty ceiling, travel slowly up and down the long drying and conditioning galleys and finally are wound on to a large roll, ready for cutting.

The cutting of light-sensitive film is another operation performed in almost total darkness. There, by means of giant machines — unwieldy in appearance but deadly accurate in their efficiency — Kodak film is slit to the various necessary



widths from the tiny miniature to the wide rolls for aerial cameras. The next step is the fascinating process of cutting and winding this film (together with its appropriate cover paper) on to the familiar spools that fit all makes of cameras. In addition to this of course is the task of accurately cutting the large sheets of X-ray and professional-type film for medical, scientific, industrial and commercial use.

Hand in hand with every step of emulsion manufacture and coating of the base (film, paper or glass), there goes an elaborate series of checking operations. Many of these are of the mechanical type and involve advanced stages of sensitometry, i.e., the accurate measurement of emulsion sensitivity.

The storage of photographic material — both before and after coating — is a most important function. In the large vault-like storage room of the Kodak Factory, literally hun-



dreds of miles of uncoated base are stored — and, after coating, an equal amount of highly light-sensitive material.

Inside the coating and processing departments not only is it necessary to keep the air moving — in order to dry sensitive emulsions and regulate temperatures — but the atmosphere must be systematically and completely changed at regular intervals, and, most important, it must be kept dust free. It is therefore not surprising to find a power plant devoted entirely to ventilation, to the supply of filtered, washed and conditioned air to the various departments.

In addition to the manufacture of finished products bearing the famous "Kodak" name, many teams of technologists — chemical, physical and colour — are constantly engaged in research to discover new methods to aid the many highly scientific and specialised branches of photography.

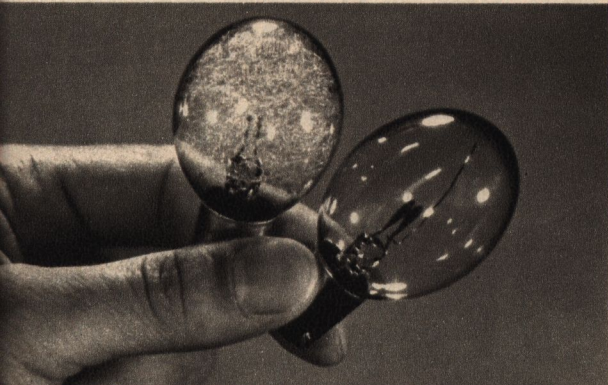


Photographic Lamps . . .

to provide you with "artificial sunlight"
when you want it and how you want it

Floodlighting Lamps

Probably the best and easiest lighting source for home picture making — they're so easily fitted to normal household units such as reading lamps, and yet give that ever-necessary brilliance. Specially designed and made by B.G.E. and Philips for photographic use, these lamps give an intense light of high actinic value. Available in a range of 250 (with a life of 2-3 hours continuous burning) and 500 (6-hour or 100-hour) wattages, with B.C. or E.S. bases. Also available are mirror-backed lamps of 250 (2-hour) and 500 (6-hour and 100-hour) wattages, that effectively combine both reflector and light source in one easy-to-use lamp.

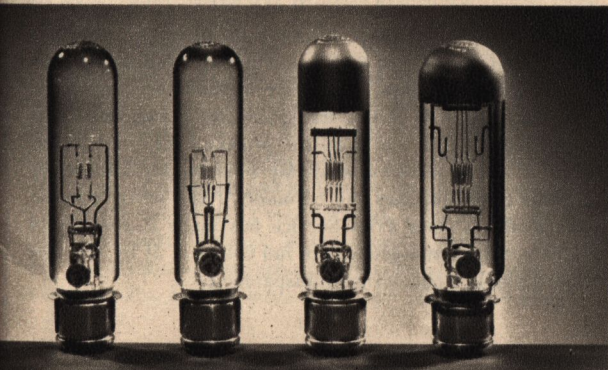
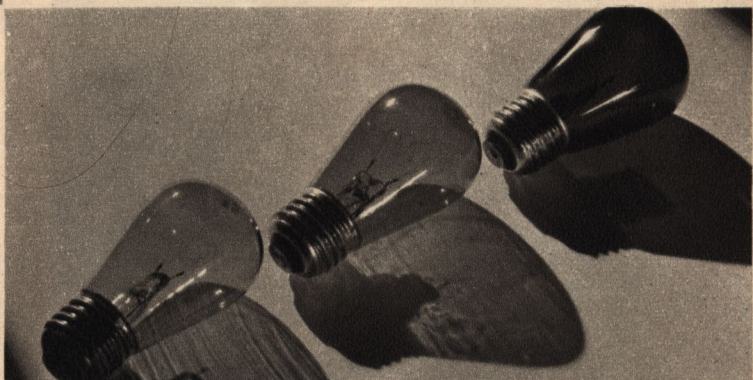


Flash Bulbs

When neither daylight nor flood light is available or suitable, the flash bulb is the obvious choice — it gives a brilliant flash of light when and where you want it without consequence of weather conditions. Alternatively, the flash bulb can be used to supplement both flood and daylight where necessary. A wide range of bulbs is available from the tiny capless G.E.C.1 and PF.1 to the powerful G.E.C. 22B and PF.100. Blue and yellow coatings are available for use with Kodachrome film, of the daylight and tungsten types respectively. Fitted with A.S.C.C., E.S., and capless-type bases in a wide variety of light intensities.

Darkroom Lamps

Top quality lamps designed to give maximum illumination with perfect safety — made by the reliable houses of B.G.E. and Philips. Each has its special purpose in darkroom procedure — red for developing orthochromatic films (e.g., Verichrome film); green for brief inspection only during development of panchromatic films (e.g., Tri-X); yellow for developing Velox paper; yellow-amber or orange for Bromesko and Bromide paper. Available in a range of colours in sprayed or natural colour glass and fitted with B.C. or E.S. bases. Also available is a wide range of all makes of general purpose lamps in clear or pearl glass, B.C. or E.S. bases.



Projection Lamps

Just as your eyes appreciate a good light for reading, so do your slides and movies project better with the correct lamp in your projector — moreover, you have the added assurance that your shots will look "their very best." All lamps are of high quality and are dependable — produced by the famous electrical houses of B.G.E., Philips and A.E.I. Available in a very wide range of wattages and voltages in the standard bases to fit all projectors.

Kodak Sensitized Materials

... are always fresh and dependable because they're made in Australia especially to suit all Australian conditions



Verichrome Film

A fast orthochromatic film designed for day-in, day-out picture making with the average camera. It is specially suitable for all box-type Brownies and the simpler folding-type cameras. Its specially prepared emulsion gives it a latitude that extends its picture-making time right through the daylight hours, at the same time taking care of reasonable exposure errors. It is also recommended for flash photography. Verichrome offers fine atmospheric quality in landscape work and crisp sparkle in marine and snow scenes, excellent tonal scale in shadows, and exceptional quality in contrasty outdoor subjects. A special backing assures freedom from halation. It is suitable for use with a yellow or light green filter, but not orange or red filters. Available in a range of standard rolls except 35mm. This film is admirably suited to home development by tray or tank process. Exposure: Average subject in sunlight: $f/11$, $1/50$ second.

Panatomic-X Film

A name familiar to all advanced photographers — now produced in an entirely new version and featuring a new kind of sharpness. Panatomic-X is a microscopically fine-grain film possessing extremely high "resolving power," superior acutance (less "light scatter" between the silver crystals), and an ultra-thin emulsion — all these features add up to assure you the utmost in image sharpness, fine detail, and crisp tonal separation. In addition, it has an ideally balanced panchromatic sensitivity which means a better exposure latitude, a wider tonal range with no blocked highlights or blank shadows, and an improved operating speed. It has an A.S.A. exposure index of 25 daylight and 20 tungsten. These however include the usual safety factor to ensure full normal exposure. The ultra-thin emulsion drastically cuts development and drying times — negatives can be printed or enlarged about half an hour from commencement of developing process. Available in 35mm. size in 36-exposure cassettes. Exposure: Average subjects in sunlight: $f/11$, $1/50$ second.

Tri-X Film

Combines exceptional speed with complete colour sensitivity — thus making it the obvious choice of advanced enthusiasts seeking "the best." Its A.S.A. daylight-exposure index is a conservative 200. This means that the film can readily be used, without supplementary flash or flood illumination, for indoor snapshots by available light, night sporting events without flash, and fast-action pictures on very dull days outdoors. The exposure and development latitude of Tri-X is exceptional — considerable over- or under-exposure can be tolerated and excellent prints still obtained. An improved new type of backing paper has been introduced with Tri-X — numbers are printed black on the yellow backing paper and therefore have greater visibility in the ruby window; moreover, the film name is printed preceding the number for easier identification. Tri-X is available in 135, 127, 620, 120 and 828 roll film sizes and 520, 518, 523 and 541 in film pack. Exposure: Average subject in sunlight: $f/16$, $1/200$ second.

Kodak Film (in sheets)

Especially suited to advanced amateur, professional and commercial photographers requiring a large negative size to produce the highest quality enlargements possible. Moreover, large negative sizes permit easier retouching. Made in a wide range of orthochromatic and panchromatic emulsions in sizes from $2\frac{1}{4} \times 3\frac{1}{4}$ in. to $6\frac{1}{2} \times 8\frac{1}{2}$ in.

Kodachrome Film

Available in sizes K135 and K828, Kodachrome yields colour transparencies which may be viewed directly or projected in large size on the home screen. It requires no extra equipment for taking. Regular Kodachrome is for pictures outdoors in sunlit hours, and Type "A" is for use with ordinary photo-flood and flash lamps. The price includes processing and mounting the 24 by 36mm. transparencies as standard Kodaslide ready to fit any 2 by 2in. projector for home projection. A special service is available whereby duplicate Kodachrome transparencies can be made, if and when required. The Kodak Colour Print Service has made it possible for users to obtain enlargements in full colour in $2\frac{1}{4}$ by $3\frac{1}{4}$ in. size from suitable Kodachrome transparencies.

Kodak Plates

Produced to serve similar purposes to sheet film except that the base is glass and not gelatin. Excellent for the more critical demands of accurate photographic reproduction. Available in a large range of panchromatic and orthochromatic emulsions in sizes from $2\frac{1}{2} \times 3\frac{1}{2}$ to $6\frac{1}{2} \times 8\frac{1}{2}$ in.

Velox Paper

Velox is the ideal contact printing paper for printing your own snapshots at home. Four degrees of contrast make it ideal as a medium for making prints from a variety of negatives of different degrees of contrast. The tone of Velox is blue-black which is uniform through all degrees of contrast, and equally uniform for a range of development times. Available in glossy in a wide range of contrasts to suit all negatives; also available in a velvet finish in normal contrast. Marketed in 25 and 100-sheet packets in sizes from $1\frac{1}{8} \times 2\frac{3}{4}$ to $3\frac{1}{2} \times 5\frac{1}{2}$ in.; and 10 and 100-sheet packets in $4\frac{1}{4} \times 6\frac{1}{2}$ in. and $6\frac{1}{2} \times 8\frac{1}{2}$ in.

Bromesko Paper

Kodak Bromesko Paper has been designed as a specialist paper for truly distinctive pictorial, exhibition, or studio work. It gives fine quality prints with a characteristic charm — a charm produced by full rich gradation in sparkling highlights and translucent shadows. It is not an ordinary bromide emulsion; it has been devised to possess its special qualities and only personal experience can inspire due appreciation of these. Some of its best characteristics are: its exceptionally long scale of gradation which enables it to render perfectly all the delicate tonal modelling of a good portrait negative; its rich deep-blacks and clear highlights; and its great development latitude with attendant gain in print uniformity and reduction in the number of reject prints. Produced in two degrees of contrast and in an extensive range of textures and surfaces. Available, double weight only, in packets of 25 and 100 sheets in sizes from $2\frac{1}{2} \times 3\frac{1}{2}$ to 16×20 in.

Bromide Paper

The Kodak Bromide Paper range gives the photographer a wide choice of paper surfaces and base tints enabling him to choose the combination and physical appearance which best suits his subject material. These characteristics, together with the wide contrast range, mean that he can select a paper precisely suited to the negative contrast with which he works. Uniformity of image tone throughout all grades of contrast is a fact attractive to the photographer who finds himself using various Bromide papers to cover the variety of his work. Uniformity of handling and maximum versatility in processing and general handling make Kodak Bromide Papers the natural choice for the bulk of photographic printing. Available in a wide range of surfaces and contrasts in single and double weight, and in sizes from $2\frac{1}{2} \times 3\frac{1}{2}$ to 16×20 in.



KODAK CHEMICAL PREPARATIONS



... are accurately and scientifically compounded to produce the best possible results when used in conjunction with Kodak Film, Plates, and Papers. Most preparations are single powders sealed in airtight moisture-proof containers — once the can is punched the powder pours freely and dissolves easily. Kodak Chemical Preparations are machine-mixed to ensure that every can maintains its efficiency and consistency year in year out.

Kodak
DEVELOPER
DK-60A

Net Weight 5 GALLONS

KODAK (A/estd) PTY. L.
MELBOURNE - AUSTRALIA

KODAK PREPARED DEVELOPERS FOR FILMS AND PLATES

Kodak Developer D-19—Ideal for the needs of the technical photographer. It is a rapid, long-life, clean-working developer designed to give negatives of high contrast in 4 to 5 minutes.

Kodak Developer DK-50—A favourite with both amateur and professional workers, it is recommended for processing sheet films and plates in trays or open tanks.

Kodak Developer DK-60a—For general use in developing roll films, sheet films and plates. It holds well the original emulsion speed and produces high quality results in 5 to 7 minutes development.

Kodak Developer D-76—An excellent developer for all types of roll-film — it gives finest grain with the maximum emulsion speed for normal contrast; and the maximum shadow detail in fine grain films.

Kodak Microdol Developer—A microscopically fine-grain developer, ideal for films necessitating extreme enlargement. It works quite fast, forms no scum, holds sludge to a minimum and gives uniform performance.

Kodak Tropical Developer—Allows the efficient processing of films to be carried out at temperatures up to 101 deg. F. It keeps well and has a good capacity when stored at 75 deg. F. or lower.

KODAK PREPARED DEVELOPERS FOR PAPERS; ALSO TRAY DEVELOPMENT OF NEGATIVE MATERIALS

Kodak Universal M-Q Developer—Conveniently packed for that quick job of developing or printing just a few films. Makes 12 ozs. of solution for tray development.

Kodak Versatol Developer—Highly successful concentrated liquid developer for universal use with films, plates and papers. Versatol is convenient, clean and economical to use.

Kodak Dektol Developer—Ideal for large-scale development of all types of contact and enlarging papers; also suitable for negative materials. Dektol has a high print capacity, keeps well and minimises sludge.

Kodak Developer D-72—Is an all-purpose rapid elon-hydroquinone developer suitable for use with all papers, films and plates.

Kodak Liquid Developer—A concentrated all-purpose developing solution.

Kodak Bromesko Developer—For use with Bromesko Paper—yields rich warm-black tones by direct development and gives maximum warmth of image.

KODAK PREPARED HARDENERS AND FIXERS

Kodak Acid Fixer—An improved, long-lasting, high-capacity fixer which includes the hardener in the one powder. When dissolved in water makes a first-class fixer for use with films, plates, bromide and contact printing papers.

Kodak Liquid Hardener—When added to 25% hypo solution to make acid-hardening fixing baths it provides the necessary acidity and hardening qualities.

Kodak Tropical Hardener—A chrome alum bath recommended as a rinse between development and fixation during hot-weather processing of films and plates. Should be used in conjunction with Kodak Tropical Developer and Kodak Acid Fixer.

KODAK SPECIAL PROCESSING AIDS

Kodak Anti-Calcium—Prevents or minimises the formation of precipitates resulting from the presence of calcium in most tap water.

Kodak Anti-Fog—Added to a film or paper developer it helps to suppress fog and increase contrast in materials which tend to fog from age. Of great value in high-temperature processing.

Kodak Chromium Intensifier—An efficient preparation for intensifying weak, flat negatives.

Kodak Dead Black—A thoroughly black solution for painting metal parts, both inside and outside, of cameras. Suitable for general use.

Kodak Lens Cleaner—Keeps lenses clean; prevents growth of fungus.

Kodak Oil Medium—Prepares the print surface for use with coloured pencils—helps colours to blend better.

Kodak Opaque—A quick-drying, perfectly opaque liquid medium for spotting or blocking out negatives or lantern slides.

Kodak Photo-Flo—Prevents water marks and streaks by decreasing the surface tension of water so that it runs off evenly from film surfaces.

Kodak Retouching Medium—This holdfast transparent retouching medium is prepared from a highly approved formula for use with either varnished or unvarnished negatives.

Kodak Odourless Sepia Toner—Gives pleasant and permanent sepia tones, is rapid in action and extremely simple to use. It is a bleach and re-develop process.

Kodak Spotting Medium—A quick-drying perfectly opaque solution for use on negatives and plates to block out areas or spot out pinholes.

Kodak White Ink—Flows freely from an ordinary pen, giving solid white permanent inscriptions on slides, mounts, etc.

KODAK SERVICES FOR THE PHOTOGRAPHER

Kodak Photo-Finishing Service

This is a world-wide facility extended to the users of Kodak film. This service embraces the processing of all amateur films, the making of contact prints and enlargements, the toning, colouring and mounting of enlargements, producing copy-photographs from existing amateur prints, and the making of negatives and black-and-white prints from colour transparencies.

Kodachrome Processing

Users of Kodachrome colour film are assured the facility of uniform processing at Kodachrome Processing Laboratories throughout the world. Also, Kodak Colour Prints (2¼ x 3¼ in.) can be made from selected Kodachrome slides.

Kodak Technical Service

A complete photographic service is available through every Kodak Store in the Commonwealth. This service acts essentially in an advisory capacity to help both amateur and professional photographers.

Kodak Camera Repair Service

Available through all Kodak Stores this service includes the maintenance, repair or reconditioning of still and cine cameras and projectors, exposure meters, etc., marketed by the Kodak company. Free quotations available on request.

Kodak Lecture Service

Designed to advance the cause of amateur photography throughout Australia, this Service is extended to schools, photographic societies, clubs, groups, etc., as circumstances permit.

Kodak Data Books and Leaflets

Those requiring further information upon the technical side of subjects photographic are referred to the wide range of Kodak Data Books and free leaflets which refer in great detail to many aspects only briefly covered in this book.

KODAK STORE ADDRESSES THROUGHOUT AUSTRALIA

ADELAIDE 37 Rundle Street
BALLARAT 406 Sturt Street
BRISBANE 250 Queen Street
CAIRNS 103 Abbott Street
GEELONG 89 Ryrie Street
HOBART 45 Elizabeth Street
KATOOMBA Katoomba Street
LAUNCESTON 93 Brisbane Street

MELBOURNE 252 Collins Street
NEWCASTLE 9 Wolfe Street
PERTH 662 Hay Street
ROCKHAMPTON 105 East Street
SYDNEY 379-381 George Street
TOOWOOMBA 424 Ruthven Street
TOWNSVILLE 166 Flinders Street



NOTES

7

Kodak

