

*You can take*  
**Snapshots at night**  
**Indoor Pictures**  
**at night**

**Stage Pictures**  
during performance

*without flashlight*

by using an

**ERNEMANN**

**ERMANOX**

**WITH ERNOSTAR 1:2,0**

# Ernemann „ERMANOX“

the most efficient camera in existence!  
with Ernostar 1:2,0  
for  $2\frac{5}{16} \times 1\frac{3}{4}$ “ size only

*Everybody who has anything to do with photography knows the difficulties and imperfections connected with taking indoor pictures in the evening or at night when the room is normally lighted, and he also knows that it is impossible to photograph stage scenes in a theatre or vaudeville during the performance and by the usual light. The rapidity of existing lenses is still too slow to permit this kind of work with short time or instantaneous exposure and to catch the peculiar atmosphere of those scenes.*

*There was nothing left till now but to forego the pleasure of taking pictures, because an attempt meant certain failure. Or exposures of several minutes' duration were required which, of course, did not catch the performers. If artificial light, flashlight for instance, was used, the results were correspondingly poor, and many a serious amateur shivers when he remembers the unavoidable by-products of artificial light such as distorted faces, closed eyes, sudden involuntary movements at the moment of the flash etc.*

But conditions have changed, and every lover of photography can do better today. The apparatus needed for this class of work is the small „ERMANOX“-camera, picture size  $2\frac{5}{16} \times 1\frac{3}{4}$ “ =  $4\frac{1}{2} \times 6$  cm, equipped with a rapid „Erno-

*star*“ 1:2,0 lens. „Ermanox“ is remarkable and amazing, in external appearance as well as in effect. „A lens with a bit of a camera!“ No wonder, as the extremely high rapidity of 1:2,0 presupposes a surprisingly large diameter of the lenses. *This lens having the five-fold rapidity of the 1:4,5 lenses hitherto in use enables the photographer to take pictures that could not be taken till now.* The specimen pictures reproduced here were taken at night or in the evening by the usual light or by normal stage light during the performance and *without flashlight.*

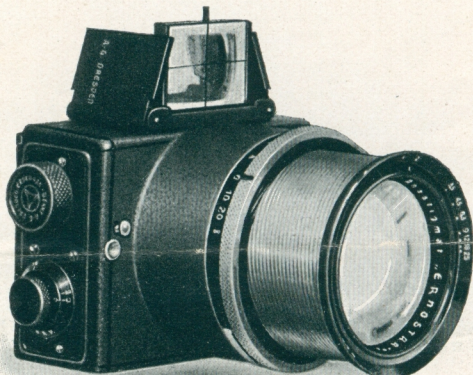
But the range of usefulness of the „Ermanox“ camera is still greater; it can be used in cases where good pictures depended almost entirely on mere accidents or favorable light like the *baby* playing in the twilight, *genre* and *sport pictures* or *animals on preserves* while the light is bad. One



Enlargement of a  $2\frac{2}{16} \times 1\frac{3}{4}$ “ negative

**Taken at 12 o'clock at night without flashlight**

may photograph one's guests assembled under the chandelier and thus preserve a particular scene, or take the picture of a congenial gathering in a *café* or *restaurant*. The new camera is further and important auxiliary of the *scientist*, particularly for *medical work*, during complicated operations or observations of the movement of living organs. The *criminologist* and *detective* will find it helpful in collecting evidence in an



EREMANN-WERKE, A.G. DRESDEN.

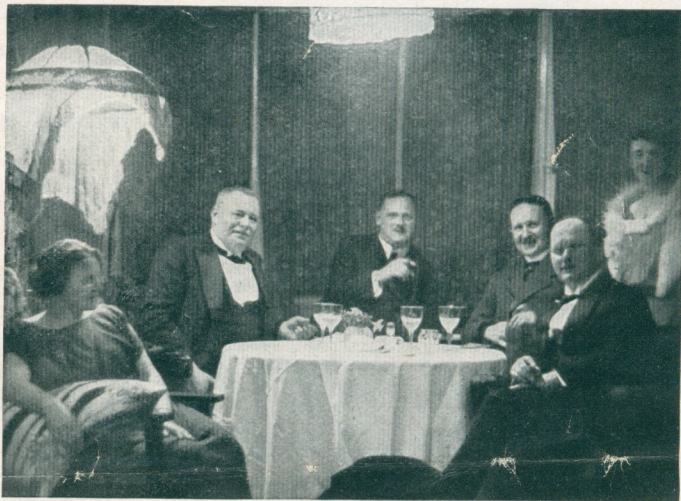
inconspicuous manner. The *efficiency expert* will use it for examining the working method of a machine while the amateur will obtain the most beautiful pictures in natural colors at short exposures.

The lens has the greatest possible correction and produces pictures of highest brilliancy, plastic effect and uniform definition down to the edge, even if fully opened. Owing to the complete elimination of orthochromatic aberration and on account of its extreme rapidity the „Ermanox“ camera is excellently suited for taking pictures in natural colors. The depth, which naturally decreases as rapidity increases, is nevertheless wonderful, but all of these features are topped off by the remarkable rapidity of 1:2,0.

In spite of the extraordinary conditions the designer had to meet the camera is really pleasing to look at. Construction and focal plane shutter are similar to that of the Ernemann Miniature Folding Camera which, when put on the market and still today, is regarded as the acme of perfection in small cameras having focal plane shutters and which combines precision with handiness and dependability. The focal plane shutter with covered winding device permits a total of 20 graduated speeds up to  $\frac{1}{1000}$ th of a second through the medium of 5 different widths of slit in connection with 4 adjustable spring tensions which can be adjusted and read from the outside. As the shutter is provided with a braking device it works perfectly free from vibrations and almost noiselessly even in case of time and bulb exposures, so that *no trouble is experienced even while taking pictures in a theatre.*



Enlargement of a  $2\frac{3}{16} \times 1\frac{3}{4}$ " negative  
**Taken with a 100-watt incandescent lamp**  
Exposure approx.  $\frac{1}{20}$ th second



Enlargement of a  $2\frac{5}{16} \times 1\frac{3}{4}$ " negative

**Interior Picture without Flashlight at 11 o'clock in the evening**  
**Exposure approx. 1 second**

An „Ermanox“ picture is so extraordinarily clear and sharply defined that it can be enlarged later on without affecting its quality.

The wide range of usefulness of the „Ermanox“ camera naturally requires excellent plates. To obtain shortest exposure, maximum speed and a fine grain are needed. These demands are met by the *Ernemann Ermanox Plate* (21° Scheiner = 640° H & D), which is perfectly free from halation. Orthochromatically it has been adapted to the lens correction of the „Ernostar“ by means of a special emulsion and on a scientific basis. This plate ensures perfect „Ermanox“ pictures.

The Ernemann-Werke have created a lens that has no equal in the wide World. The „Ermanox“ camera does pioneer work and opens up new vistas. It's a masterpiece of German

optics in general and the Ernemann optical institute in particular.

„Ermanox“ enables every *press photographer* and *photo reporter* to take life-like pictures of *theatre* or *vaudeville scenes* without special preparation. Adverse conditions of light, which formerly prevented him from obtaining pictures,



Stage Picture from „Im weißen Rössl“  
Dresden State Theatre

**Taken during the performance  
without flashlight**

**Exposure approx.  $\frac{1}{20}$ th second**

*pleasant gatherings around the table, stage and nocturnal scenes* or other events and happenings with a peculiar atmosphere for his own private enjoyment and as permanent souvenirs.

have been eliminated. The *amateur*, however, is now independent of flashlight and its attendant unpleasant phenomena and free to keep a pictorial record of *social life*,

## **ERNEMANN-„ERMANOX“-CAMERA**

*Size:  $2\frac{5}{16} \times 1\frac{3}{4}$ “, Dimension:  $3\frac{1}{4} \times 3\frac{3}{4} \times 4\frac{3}{4}$  ins. Weight:  $3\frac{1}{2}$  lbs*

Order Nr.	Ernemann „Ermanox“ with Ernemann Ernstar 1:2,0 4“ = 10 cm foc. length,	Price
254	<b>including</b> 3 German silver normal slides, inside black varnish, in bag, and black leather bag, carrying and extension strap and shoulder strap for the camera . . . .	
37	<b>yellow screen</b> , detachable, light, medium and dark . . . . . each	
55	<b>tripod plates</b> with support for vertical and horizontal pictures . . . . .	



Stage Picture from the Revue „Die Welt im Spiegel“

**Taken during the performance without flashlight**

**Exp. approx.  $\frac{1}{20}$ th sec.**

Enlargement of a  $2\frac{3}{16} \times 1\frac{3}{4}$ “ negative

**ERNEMANN-WERKE A.-G.**  
OPTICAL INSTITUTE · PHOTO-CINEMA WORKS  
**DRESDEN**