

Winter
Kodaking

CHAS. W. WHITTLESEY & CO.
281 State St., 331 Wooster St.,
NEW HAVEN, CONN.

Winter Kodaking.

The up-to-date Kodaker is not alone a taker of summer pictures. He has learned the pleasure of winter Kodaking. The film cartridge system enables him to load his instrument for a dozen exposures at an outlay of a few cents only, and instead of his confining his photographic pleasures to exposing a few rolls of film of 50 or 100 exposures each, while on his summer holiday, he amuses himself and friends in winter by making indoor portraits by daylight or by flash-light, and now and then he finds a most picturesque outdoor winter scene when a heavy snow has covered the trees with a soft mantle of snowy white as if to protect them from the cruel winds. Or, perhaps he sees the picturesque in a group of trees, barren of leaves, their naked branches bowing unwillingly to the North Wind. A few such pictures add much to his collection of summer scenes and the long winter evenings give him ample time to indulge in the delights of developing, when by

the orange glow of his dark room lamp he watches the photographic image appear, faintly at first and then stronger, under the action of the chemicals, each high light and detail appearing more plainly until he has secured the perfect, completed negative. Then are added the pleasures of making and toning the print or perchance the making of enlargements on bromide paper, the pure whites, deep blacks and delicately graded half tones giving the effect of the most beautiful steel engravings but with that fidelity to detail which only the camera can give.

So simple and complete are the instructions given in the manuals furnished with every kodak that the novice quickly grasps the first essentials of picture taking and picture making and, with a little persistence, becomes an expert.

Christmas time, when gatherings of friends worth remembering are frequent, is an especially happy season for the taking of flash-lights. Many a Kodak that has been given as a Christmas remembrance has begun its career of usefulness by recording upon the sensitive

film a life like impression of the merry faces gathered about the very tree from which it had just been taken down, to delight the heart of some boy or girl—grown up boy or girl perchance but nevertheless young under the witching influence of Christmas tide.

The new Kodaks are all so made as to use light proof film cartridges and while simple in construction and action are so mechanically perfect and are equipped with lenses and shutters of such superb quality as to adapt them to the highest grades of Photographic work. While it is easy for the possessor of one of the new Kodaks to do his own developing and printing they are especially convenient for those who do not care to enter into this branch of the work, the light-proof film cartridges being readily sent by mail and our old offer still holding good :

*You press the button,
We do the rest.*

EASTMAN KODAK CO.

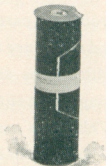
Rochester, N. Y.

The Cartridge System.

In the cartridge system of film photography the film is put up in light-tight rolls that may be inserted in the Kodak in broad daylight. Extending the length of the strip of film and several inches beyond each end is a strip of black paper, which in connection with the flanges on the spool, forms a light-proof cartridge.

After inserting the spool in the Kodak and threading up the black paper the Kodak is closed and the key turned until the black paper has been reeled off and the sensitive film brought into place in the focal plane.

The black paper runs with and behind **FILM CARTRIDGE.** the film, and at proper intervals is marked in white with the number of the section of film, 1, 2, 3, etc. In the back of the Kodak is a small red window through which the figures appear as the key is turned. These figures show just how far to turn the key and how many exposures have been made. After all the exposures have been made, a few extra turns of the key entirely covers the film with black paper and the camera may be unloaded in daylight.



The black paper running the full length of and beyond the ends of the film, the pull of the roll holder is all upon the paper, a great improvement over other types, where, owing to a piece of black paper being attached to each end of the film, there are three sections and therefore a liability to pull apart.

The late models of Kodaks have improved shutters, sets of stops; all loose spindles and loose ratchet wheels have been done away with and the film instead of passing over felt pads which sometimes injured the face of the film, now passes to and from the focal plane on rollers, thus securing the surface of the film against abrasion.

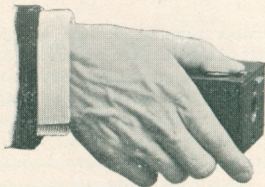
They are fitted with carefully tested lenses of fine quality, and are well made in every particular.

Instruction Books.

Accompanying each instrument is a carefully written and elaborately illustrated instruction book which tells all about loading and unloading, making snap shots, time exposures and flash lights, and how to develop and print the pictures.

It makes easy the road to photography.

EASTMAN KODAK CO.,
Rochester, N. Y.



The Pocket Kodak.

Measures $2\frac{1}{4}$ x $2\frac{7}{8}$ x $3\frac{7}{8}$ inches, makes a picture $1\frac{1}{2}$ x 2 inches, and weighs only 6 ounces. Length of focus of lens, $2\frac{1}{2}$ inches.

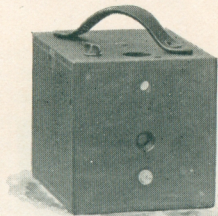
Built on the "Cartridge" system and can be loaded in daylight. Has improved rotary shutter and set of three stops for lens.

A Plate-holder for glass plates can be provided with each Pocket Kodak, no extra attachment being required. A rectangular Finder is provided for locating the image with accuracy. The construction is simple and accurate.

In the *quality* of the work they will do, Pocket Kodaks equal the best cameras on the market. They make negatives of such perfect quality that enlargements of any size can be made from them.

Covered with fine leather, handsomely finished.

Pocket Kodak, loaded, 12 exposures, - - - - -	\$5 00
Leather Hand Carrying Case (for Pocket Kodak and three extra spools of film); price of case only, - - - -	75
Leather Bicycle Carrying Case (for Pocket Kodak and three extra spools of film); price of case only, - - - -	1 00
Film Cartridge, 12 exposures, - - - - -	25



No. 2 Falcon.

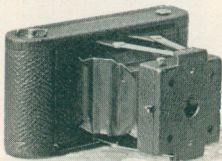
For square pictures $3\frac{1}{2} \times 3\frac{1}{2}$ inches; capacity 12 exposures without reloading; size of camera, $4\frac{1}{2} \times 4\frac{1}{2} \times 5\frac{3}{4}$ inches; weight 19 ounces; length of focus of lens, $4\frac{1}{4}$ inches.

This Kodak is built on the "Cartridge System" and can be loaded in daylight. Fitted with carefully tested achromatic lens, set of three stops, view finder, socket for tripod screw, and safety shutter.

Well made, covered with grain leather and handsomely finished.

NOTE.—The prospective purchaser should bear in mind that the price of the Falcon camera includes every requisite for taking pictures except the film, whereas the price of most of the so-called five dollar plate cameras on the market includes only one plate holder, and a further expenditure of \$2 or \$3 is necessary if it is desired to make more than two exposures between each trip to the dark room.

No. 2 Falcon Kodak, with achromatic lens, not loaded,	-	\$5 00
Light-proof Film Cartridge, 12 exposures, $3\frac{1}{2} \times 3\frac{1}{2}$,	-	60
Black Sole Leather Carrying Case,	-	1 25
Complete Bulls-Eye Developing and Printing Outfit,	-	1 00



Folding Pocket Kodak.

For rectangular pictures $2\frac{1}{4} \times 3\frac{1}{4}$ inches; capacity, 12 exposures without reloading; size of Kodak, $1\frac{1}{2} \times 3\frac{1}{2} \times 6\frac{3}{4}$ inches; weight, 10 ounces; length of focus of lens, 4 inches.

In this Kodak we have adapted the Film Cartridge System to an instrument that has been appropriately called a "Photographic Pocket Piece." Though but one and one-half inches in thickness and so light as hardly to be noticed when carried in the pocket it is in every way a complete camera.

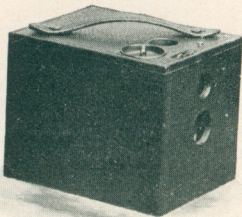
The lenses used in these instruments are specially ground, are strictly achromatic and carefully tested by an experienced inspector and have a fixed focus of 4 inches, a sufficient length to avoid that violent per-

spective which is so disagreeable in many amateur photographs. They are in short the finest achromatic lenses that can be made, covering the plate clear and sharp to the very corners.

The shutter is entirely new and is simplicity itself. It is always set. A single downward pressure on one exposure lever makes a snap shot. The instant the pressure is removed the shutter sets itself ready for the next exposure. A pressure on another lever opens the shutter for time exposure while a second pressure closes it.

It has a set of three stops and is equipped with two view finders, one for vertical and one for horizontal exposures. There are no loose parts to become lost or mislaid, and to load the instrument is simplicity itself. Made of aluminum covered with the finest black morocco, with handsomely buffed brass fittings, it is at once strong, dainty and durable. In short the Folding Pocket Kodak is an instrument of the finest quality and workmanship, but of the smallest compass; and though a practical pocket camera makes pictures of good size and of artistic shape, and so sharp that they can be enlarged to any size.

Folding Pocket Kodak, with achromatic lens, not loaded	- \$10 00
Light-proof Film Cartridge, 12 exposures, $2\frac{1}{4} \times 3\frac{1}{4}$,	- 40
Black Sole Leather Carrying Case,	- 1 25
Complete A B C Developing and Printing outfit,	- 1 50



No. 2 Bulls-Eye.

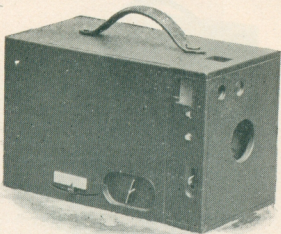
For square pictures, $3\frac{1}{2}$ x $3\frac{1}{2}$ inches; capacity, 18 exposures without reloading; size of camera, $4\frac{1}{2}$ x $4\frac{1}{2}$ x $5\frac{3}{4}$ inches; weight, 18 ounces; length of focus of lens, $4\frac{1}{4}$ inches.

This Kodak is built on the "Cartridge" system, and can be loaded in daylight. Fitted with achromatic lens, set of three stops, view finder, socket for tripod screw, and improved rotary shutter for snap-shots or time exposures.

The slides for changing stops and for time exposures are alongside of the exposure lever and always show by their position what stop is before the lens, and whether the shutter is set for time or instantaneous exposures.

Handsomely finished and covered with leather.

No. 2 Bulls-Eye Kodak, not loaded,	-	-	-	-	\$8 00
Light-proof Film Cartridge, 12 exposures, $3\frac{1}{2}$ x $3\frac{1}{2}$,	-	-	-	-	60
Black Sole Leather Carrying Case,	-	-	-	-	1 25
Complete Bulls-Eye Developing and Printing Outfit,	-	-	-	-	1 00



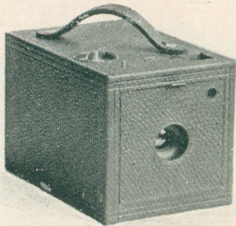
No. 4 Bulls-Eye.

For rectangular pictures, 4 x 5 inches; capacity, 12 exposures without reloading; size of Kodak, $4\frac{7}{8} \times 5\frac{7}{8} \times 9\frac{1}{4}$ inches; weight, 2 pounds, 2 ounces; length of focus of lens, $6\frac{1}{4}$ inches.

As manufactured by us, the No. 4 (4 x 5) Bulls-Eye is vastly improved over the original instrument. It is fitted with achromatic lens of superior quality, having a set of three stops; has two finders, one for vertical and one for horizontal exposures; and is also provided with two sockets for tripod screws, one for vertical and one for horizontal exposures. Improved rotary shutter, for snap-shots or time exposures.

It has a carefully adjusted focusing scale, and, being built on the "Cartridge" system, can be loaded in daylight. Handsomely finished and covered with leather.

No. 4 Bulls-Eye Kodak, not loaded,	-	-	-	-	-	\$12 00
Light-proof Film Cartridge, 12 exposures, 4 x 5,	-	-	-	-	-	90
Black Sole Leather Carrying Case,	-	-	-	-	-	2 00
Complete A B C Developing and Printing Outfit,	-	-	-	-	-	1 50

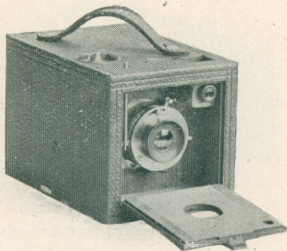


No. 2 Bulls-Eye Special.

For square pictures, $3\frac{1}{2} \times 3\frac{1}{2}$ inches; capacity, 12 exposures without reloading; size of camera, $4\frac{3}{4} \times 4\frac{3}{4} \times 6\frac{3}{4}$ inches; weight, 22 ounces; length of focus of lens, 5 inches.

This instrument combines the extreme simplicity of the cartridge system as exemplified in the No. 2 Bulls-Eye with a shutter and lens of the finest quality.

The shutter is, in fact, the Eastman pneumatic shutter which is furnished with the No. 4 Cartridge Kodak but arranged to work with a finger release instead of with a bulb. It has three speeds for instantaneous exposures and by the moving of a single lever can be instantly changed from instantaneous to time or to "Lever" exposures, the latter being used for very short "time exposures," the shutter remaining open as long as the exposure lever is kept under pressure, and closing the instant it is released. This shutter is fitted with iris diaphragm stops graduated for Nos. 8, 16, 32 and 64. The shutter is set and operated without open-



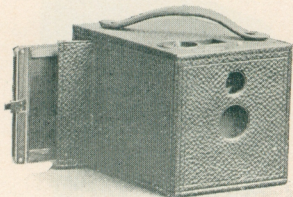
NO. 2 BULLS-EYE SPECIAL, SHOWING SHUTTER.

ing the front except to change stops or change action from time to instantaneous or vice versa.

No expense has been spared in fitting this instrument with a lens of the finest quality. It is of the fixed focus type and has a length of $4\frac{7}{8}$ inches, it is strictly rectilinear and very rapid with wonderful depth, speed and definition. Every lens being carefully tested by our own expert the highest quality will be maintained. In short, every lens must be perfect.

This Kodak has square finder, socket for tripod screw, is covered with fine black Morocco and beautifully finished.

No. 2 Bulls-Eye Special with rapid rectilinear lens and Eastman shutter with iris diaphragm stops, not loaded,	\$15 00
Light-proof film cartridge, 12 exposures, $3\frac{1}{2} \times 3\frac{1}{2}$,	60
Black Sole Leather Carrying Case,	1 25
Complete Bulls-Eye Developing and Printing Outfit,	1 00



SHOWING NO. 2 BULLET ADAPTED TO PLATES.

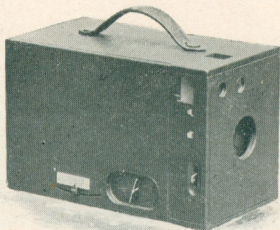
No. 2 Bullet.

For square pictures, $3\frac{1}{2} \times 3\frac{1}{2}$ inches; capacity, 18 exposures without reloading; size of camera, $4\frac{1}{2} \times 4\frac{1}{2} \times 6$ inches; weight, 20 ounces; length of focus of lens, $4\frac{1}{4}$ inches.

The Improved Bullet uses either roll films or glass plates (with plates the picture is $3\frac{1}{4} \times 3\frac{1}{2}$ inches), and being built on the "Cartridge" system, can be loaded in daylight. It is fitted with an achromatic lens, set of three stops, square finder, socket for tripod screw, and has our improved rotary shutter for snap-shots or time exposures.

Handsomely finished and covered with leather.

No. 2 Bullet Kodak, not loaded,	-	-	-	-	-	\$10 00
Light-proof Film Cartridge, 12 exposures, $3\frac{1}{2} \times 3\frac{1}{2}$,	-	-	-	-	-	60
Single Plate Holders, $3\frac{1}{4} \times 3\frac{1}{2}$ inches, each,	-	-	-	-	-	60
Glass Plates, $3\frac{1}{4} \times 3\frac{1}{2}$ inches, per dozen,	-	-	-	-	-	45
Black Sole Leather Carrying Case,	-	-	-	-	-	1 25
Complete Bulls-Eye Developing and Printing Outfit,	-	-	-	-	-	1 00



No. 4 Bullet.

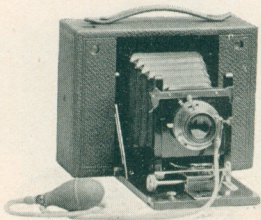
(FOR FILM AND PLATES.)

For rectangular pictures, 4 x 5 inches; capacity, 12 exposures without reloading; size of camera, $4\frac{7}{8} \times 5\frac{7}{8} \times 9\frac{1}{4}$ inches; weight, 2 pounds, 2 ounces; length of focus of lens, $6\frac{1}{4}$ inches.

The No. 4 Bullet uses either roll films or glass plates, and being built on the "Cartridge" system, can be loaded in daylight. It is fitted with an achromatic lens, set of three stops, two finders (one for vertical and one for horizontal exposures), two sockets for tripod screw, and has our improved rotary shutter for snap-shots or time exposures.

Handsomely finished and covered with leather.

No. 4 Bullet Kodak, not loaded, - - - - -	\$15 00
Light-proof Film Cartridge, 12 exposures, 4 x 5, - - - - -	90
Single Plate Holders, 4 x 5 inches, each, - - - - -	75
Glass Plates, 4 x 5, per dozen, - - - - -	65
Black Sole Leather Carrying Case, - - - - -	2 00
Complete A B C Developing and Printing Outfit, - - - - -	1 50



CARTRIDGE KODAK OPEN.

The No. 4 Cartridge Kodak.

FOR FILM AND PLATES.

For rectangular pictures 4 x 5 inches; capacity, 12 exposures without reloading; size of camera, $3\frac{1}{8} \times 6\frac{3}{8} \times 8\frac{1}{4}$ = 167 cubic inches; weight, loaded, 2 lbs., 12 oz.; length of focus of lens, $6\frac{1}{2}$ inches.

In the Cartridge Kodak we have adapted the "Film Cartridge System" to a Folding Kodak of the finest quality and greatest capabilities. It is hardly more than half the thickness of other cameras which are adapted to both films and plates and is the only folding camera having the daylight loading feature.

The Cartridge Kodak uses either our daylight loading Film Cartridges or glass plates, is fitted with carefully tested rapid rectilinear lenses and our own pneumatic release shutter fitted with iris diaphragm stops.

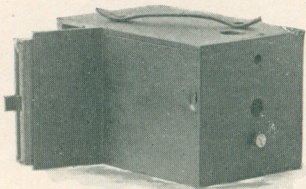
This shutter has three speeds for instantaneous exposures; it makes short time exposures by one pressure of the bulb, the shutter closing when the bulb is released; and makes longer time exposures by pressing the bulb once to open the shutter and again to close it. It may be operated by the finger trigger instead of the bulb when so desired.

The Cartridge Kodak is provided with a rising, sliding and falling front, two view finders, one for vertical and one for horizontal exposures, two sockets for tripod screws, and is equally perfect as a hand or as a tripod camera. It has an index for focusing and when used with plates may be focused on the ground glass if desired.

When used with film there are no projecting parts, no attachments to become lost, no extras to be mislaid. The plate adapter is simple and compact and can be put in place or removed in five seconds.

The finish is rich and beautiful, the wood parts being of highly polished mahogany with brass fittings, and the covering fine morocco. In short, it has in a superlative degree, that rich and dainty finish which characterizes all our goods.

No. 4 Cartridge Kodak with Rapid Rectilinear lens and pneumatic shutter,	\$25	00
Light-proof Film Cartridge, 12 exposures, 5 x 4 inches,		90
Complete A B C Developing and Printing Outfit,		1 50



No. 2 Eureka Camera.

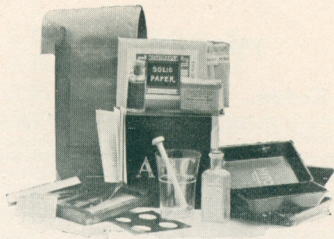
FOR GLASS PLATES ONLY.

For square pictures, $3\frac{1}{2} \times 3\frac{1}{2}$ inches; size of camera, $4\frac{5}{8} \times 4\frac{3}{4} \times 7\frac{1}{2}$ inches; length of focus of lens, $4\frac{1}{4}$ inches.

In our new Eureka camera we offer the amateur a glass plate instrument that can be depended upon, and at a price that is only made possible by the magnificent facilities at our command. It contains no uncertain or untried devices for cheapening cost and no clumsy attempts at making it a "magazine" camera.

Fitted with fine achromatic lens, safety shutter for time exposures or snap shots, set of three stops, view finder and socket for tripod screw. Perfectly adapted to hand or tripod use and has space in back for three double plate holders. Covered with fine grain leather and fitted with leather handle for carrying.

No. 2 Eureka Camera, with one double plate holder, . . .	\$4 00
Double Plate Holders $3\frac{1}{2} \times 3\frac{1}{2}$, each, . . .	75
Eastman's Extra Rapid Dry Plates, $3\frac{1}{2} \times 3\frac{1}{2}$, per doz., . . .	35
Eastman's Bulls-Eye Developing and Printing Outfit complete for developing and printing 12 pictures, . . .	1 00
Black Sole Leather Carrying Case,	1 25



EASTMAN'S A B C DEVELOPING AND PRINTING OUTFIT includes every requisite for Developing, Printing and Finishing 24 Pictures 4x5, or 96 Pocket Kodak Pictures. Can be used with any of the foregoing cameras.

IT CONTAINS:

1 Eastman Candle Lamp,	\$ 25	1/2 lb. Hypo. - -	\$ 07
1 4 x 5 Printing Frame, -	25	1/2 oz. Bromide Potassium, -	10
1 4 x 5 Glass for same, -	05	2 doz. 4 x 5 Solio Paper, -	30
1 Glass Beaker, - -	12	2 oz. Toning Solution, -	15
1 Stirring Rod, - -	05	1 oz. Glycerine, - -	05
4 4 1/4 x 5 1/2 Trays, - -	40	Mask for Medallions, - -	-
1/2 doz. Developing Powders, - - - -	25	Instruction Book, - -	-

\$2 04

Price Complete, Neatly Packed, \$1.50.

Eastman's Bulls-Eye Developing and Printing Outfit complete for Developing and Printing 12 pictures 3 1/2 x 3 1/2. Similar to above outfit, but including 1 doz. 3 1/2 x 3 1/2 Solio Paper, instead of 2 doz. 4 x 5, and containing less chemicals.

Price complete, neatly packed, \$1.00.

NOTE—These outfits cannot be shipped by mail.

PRICE LIST.

Pocket Kodaks.

Pocket Kodak for pictures $1\frac{1}{2} \times 2$ inches, with roll of film for 12 exposures,	\$ 5 00
Leather Hand Carrying Case (to hold Pocket Kodak and three extra spools of film), Price, case only,	75
Do., do., russet leather,	1 00
Leather Bicycle Carrying Case (to hold Pocket Kodak and three extra spools of film). Price, case only,	1 00
Box of film, 4 cartridges, 12 exposures each,	1 00
Film Cartridge of 12 exposures,	25
Single glass plate holders,	25
Thin crystal glass dry plates $1\frac{1}{2} \times 2$ inches, per doz.,	20
Developing one roll of film (12 exposures) and furnishing one Solio Print from each negative, mounted and burnished (12 finished photographs),	50
Postage,	05
Developing only, roll 12 exposures,	25
Postage,	02
Printing only, per dozen,	25
Postage,	05

NOTE—When there are any failures we furnish enough duplicates from the good negatives to make up the full number.

Staff Tripod, fitted for Pocket Kodak,	1 50
Wire Easels for Pocket Kodak pictures, per box of 15,	25
Pocket Case, to hold 50 unmounted P. K. Prints,	25
Pocket Case, to hold 100 unmounted P. K. Prints,	50

No. 2 Bullet, No. 2 Bulls-Eye, No. 2 Bulls-Eye Special and No. 2 Falcon Kodaks.

No. 2 Bullet, for $3\frac{1}{2} \times 3\frac{1}{2}$ pictures for film or plates (not loaded),	\$10 00
No. 2 Bulls-Eye, for $3\frac{1}{2} \times 3\frac{1}{2}$ pictures (not loaded),	8 00
No. 2 Bulls-Eye Special, for $3\frac{1}{2} \times 3\frac{1}{2}$ pictures, rapid recti- linear lens, Eastman Shutter with iris diaphragm stops (not loaded),	15 00
No. 2 Falcon, for $3\frac{1}{2} \times 3\frac{1}{2}$ pictures (not loaded),	5 00
Film Cartridges, 12 exposures $3\frac{1}{2} \times 3\frac{1}{2}$,	60
Developing, P't'g and M't'g, 12 ex., $3\frac{1}{2} \times 3\frac{1}{2}$,	1 50
Developing only, each $3\frac{1}{2} \times 3\frac{1}{2}$,	06
Printing and Mounting only, each $3\frac{1}{2} \times 3\frac{1}{2}$,	08
On orders for less than one dozen prints 25c. extra will be charged.	
*Bicycle Carrying Case for No. 2 Bullet, Bulls-Eye, Bulls- Eye Special or Falcon, style A,	2 00
Washers for holding case in front of brake rod,	50
Detachable Lamp Bracket,	25
*Bicycle Carrying Case for the No. 2 Bullet, Bulls-Eye, Bulls-Eye Special or Falcon, Style B,	1 50
*Black Sole Leather Hand Carrying Case for No. 2 Bullet, Bulls-Eye, Bulls-Eye Special or Falcon,	1 25
*Ladies' Buff Leather Hand Carrying Case, with name plate, for No. 2 Bullet, Bulls-Eye, Bulls-Eye Special or Falcon,	2 00
Single Glass Plate Holders, $3\frac{1}{4} \times 3\frac{1}{2}$ inches, for No. 2 Bullet,	60
Glass Dry Plates, $3\frac{1}{4} \times 3\frac{1}{2}$, per dozen,	35
Leather Carrying Case for 6 plate holders for No. 2 Bullet,	1 00
Leather Carrying Case for 12 plate holders for No. 2 Bullet,	1 50
Complete Bulls-Eye Developing and Printing Outfit, specially adapted to use with above cameras,	1 00
*In ordering give exact designation of instrument.	

Folding Pocket Kodaks.

Folding Pocket Kodak, for pictures $2\frac{1}{4} \times 3\frac{1}{4}$ inches (not loaded),	\$10 00
Black Sole Leather Carrying Case, with shoulder strap,	1 25
Clamp for attaching above to Bicycle Head,	50
Box of film, 4 cartridges, 12 exposures $2\frac{1}{4} \times 3\frac{1}{4}$,	1 60
Film Cartridges, 12 exposures, $2\frac{1}{4} \times 3\frac{1}{4}$ each,	40
Developing one roll of film (12 exposures) and furnishing one Solio Print from each negative, mounted and bur-nished (12 finished photographs),	1 00
Developing only, each,	04
Printing and mounting, only, each,	05

On orders for less than one dozen, 25 cents extra will be charged.

No. 4 Bullet and No. 4 Bulls-Eye Kodaks.

No. 4 Bulls-Eye (not loaded),	\$12 00
No. 4 Bullet (not loaded),	15 00
Film Cartridge, 12 exposures, 4 x 5,	90
Developing, printing and mounting 12 exposures, 4 x 5,	1 80
Developing only, each,	08
Printing and mounting only, each,	10

On orders for less than one dozen prints, 25 cents extra will be charged.

Black Sole Leather Carrying Case,	2 00
Single Glass Plate Holders, for No. 4 Bullet,	75
Eastman's Extra Rapid Dry Plates, 4 x 5, per doz.,	65
Leather Carrying Case for 6 Plate Holders and Focusing Glass, for Bullet,	1 50
Leather Carrying Case for 12 Plate Holders and Focusing Glass for Bullet	2 00
Focusing Glass, for Bullet,	50
Black Leather Case with 6 single plate holders, and focus-ing glass,	6 50
Black Leather Case with 12 single plate holders, and focus-ing glass,	11 50
Complete A B C Developing and Printing Outfit,	1 50

No. 4 Cartridge Kodak.

No. 4 Cartridge Kodak for 5 x 4 pictures with rapid rectilinear lens and pneumatic shutter (not loaded) . . .	\$25 00
Film Cartridge, 12 exposures, 5 x 4,	90
Black Sole Leather Carrying Case with shoulder strap, . . .	2 00
Developing, printing and mounting, 12 exposures, . . .	1 80
Developing only, each,	08
Printing and mounting only, each,	10
Bicycle Carrying Case for No. 4 Cartridge Kodak, . . .	2 50
Washers to hold case in front of brake rod, per set, . . .	50
Adjustable lamp bracket,	25
Glass Plate Outfit, including adapter, ground glass, three double plate holders and black sole leather carrying case for three double plate holders,	6 50
Glass Plate Adapter with ground glass,	2 50
Double Glass Plate Holders, 4 x 5, each,	1 00
Black Sole Leather Carrying Case to hold three double plate holders and focusing glass,	1 00
Do., to hold six double plate holders and focusing glass, . . .	1 50
Eastman's Extra Rapid Dry Plates, per dozen, 4 x 5, . . .	65
Complete A B C Developing and Printing Outfit,	1 50
Lens Cap,	25